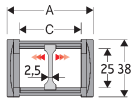


Serie Light

325L Nylon Cable Chain

Inner height (D) 25 mm

Single link construction with central large anti-friction pivot, for high torsion and tensile resistance. Vertical separators available. Used with guide channels, this chain is particularly suitable for long distance travel.



Separator	
- Unassembled	Part.no S325L
- Assembled	Part.no S325LMC

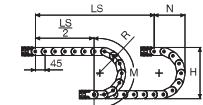
Technical characteristics when self-supported

Speed	10 m/s
Acceleration	50 m/s ²

For higher requirements please consult our technical dept.

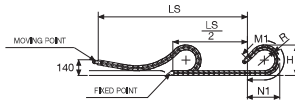
A	B	C	D	R	Weight/m	Chain
mm	mm	mm	mm	mm	kg	Part Number
57	38	40	25	050-060-075-100-125-150	0,90	325L040 □□□ *
77	38	60	25	050-060-075-100-125-150	0,95	325L060 □□□ *
93	38	76	25	050-060-075-100-125-150	1,05	325L076 □□□ *
120	38	103	25	050-060-075-100-125-150	1,15	325L103 □□□ *

*Complete the code by inserting the value of the radius (R): Ex. 325L040 □□□ □□



R	H	N	M	N1	M1
mm	mm	mm	mm	mm	mm
050	138	115	250	145	300
060	158	125	280	155	335
075	188	140	325	185	420
100	238	165	405	275	635
125	288	190	485	360	855
150	338	215	565	445	1075

For sliding applications, technical data can slightly change according to frequency, added weight and environment.



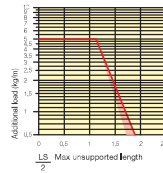
Length of chain (L)
Half travel distance ($\frac{LS}{2}$)
plus length of curve (M) or (M1)
 $L = \frac{LS}{2} + M$ or $M1$

SLIDING VERSION
to be ordered with pivoting end brackets set



Self-Supporting Capacity Diagram

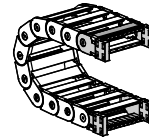
The maximum length of the self-supporting capacity ($\frac{LS}{2}$) in relationship to the weight of the cables and hoses contained per linear metre.



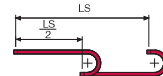
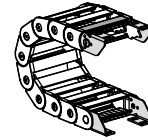
End Brackets

The end brackets set allows the two ends of the chain to be attached to the equipment. EBS tiewrap clamps and/or centre-distance reducers fully available under request.

Nylon Type



Bright Zinc Plated Steel Type***

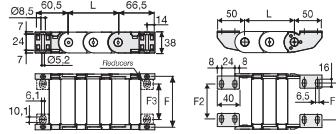


The red marking in the diagram area considers the difference of weight between various widths of chain.

For applications with $\frac{LS}{2}$ and weights not included in the area of the diagram showing self-supporting capacity, verify the possible use of support rollers (see page 30).

Fig. A Chain fixed outside/inside the radius. (Fig A)

Fig. B Chain fixed outside or inside the radius. (Fig B)



Chain type	F	F3
mm	mm	mm
325L040	51	22
325L060	71	42
325L076	87	58
325L103	114	85

Chain type	F2	F1
mm	mm	mm
325L040	22	25,5
325L060	42	45,5
325L076	58	61,5
325L103	85	88,5

Nylon Type Part Numbers

Complete Set Assembled Chain Type	End Brackets Set
325L... AN325L □□□ *KM	

Complete Set Unassembled Chain Type	End Brackets Set
325L... AN325L □□□ *K	

Tiewrap Clamp	Part Number
Assembled	CFC325L □□□ *KM
Unassembled	CFC325L □□□ *K

Centre-distance Reducers Set	Part Number
Assembled	AGF325K

Bright Zinc Plated Steel Type Part Numbers

Complete Set Unassembled Chain Type	End Brackets Set
325L... A325LK	

Tiewrap Clamp	Part Number
Assembled	CFC325L □□□ *KM
Unassembled	CFC325L □□□ *K

*Inner width (C)
*** Available on request in stainless steel

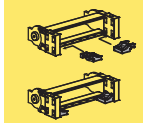


Serie Light

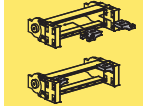
325L Nylon Cable Chain

Nylon end brackets centre-distance reducers

Reducers mounted on the inner radius



Reducers mounted on the outer radius



Suitable to long travel distance. To choose the guide channel see page 54

For further information please consult Brevetti Stendallo's Technical Office