

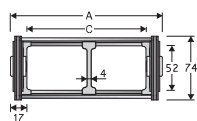
## Serie Steel

# 30LC

## Bright zinc plated steel cable chain with aluminium covers

### Inner height (D) 52 mm

Bright Zinc Plated Steel Cable Chain with aluminium cover and the quote C can be in special size. Available it can be done in Stainless steel.



### Separator

- Unassembled Part_no	S308CO
- Assembled Part_no	S308COMC

### Aluminium frames with nylon separators

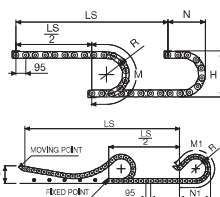
A	B	C	D	R	Weight/m	Chain
mm	mm	mm	mm	mm	kg	Part Number
140	74	106	52	150-220-250-305-400-535	7.96	30LC106□□□*
190	74	156	52	150-220-250-305-400-535	8.87	30LC156□□□*
240	74	206	52	150-220-250-305-400-535	9.79	30LC206□□□*
290	74	256	52	150-220-250-305-400-535	10.70	30LC256□□□*
340	74	306	52	150-220-250-305-400-535	11.61	30LC306□□□*
390	74	356	52	150-220-250-305-400-535	12.53	30LC356□□□*
440	74	406	52	150-220-250-305-400-535	13.44	30LC406□□□*
490	74	456	52	150-220-250-305-400-535	14.36	30LC456□□□*
540	74	506	52	150-220-250-305-400-535	15.27	30LC506□□□*
C+34	74	...	52	150-220-250-305-400-535		30LC□□□□□□*

### Technical characteristics

Speed	0.5 m/s
Acceleration	2 m/s <sup>2</sup>

For higher requirements please consult our technical dept.

For sliding applications, characteristics techniques may vary depending on the frequency, added weight and work environment.

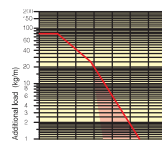


R	H*	N	M	N1	M1
mm	mm	mm	mm	mm	mm
150	388	290	670	830	1770
220	528	360	890	1145	2515
250	588	385	980	1255	2800
305	698	440	1150	1450	3285
400	888	540	1450	1740	4085
535	1158	675	1880	2110	5105

\*The height H should be increased by 10 mm/m approx. because of preload. In case of limitation to the available space, refer to the Technical Dept.

### Self-Supporting Capacity Diagram

The maximum length of the self-supporting capacity ( $\frac{LS}{2}$ ) in relationship to the weight of the cables and hoses contained per linear metre.



### Bright Zinc Plated Steel End Brackets

The end brackets set, containing four steel plates screwed to the links allows the two ends of the chain to be attached to the equipment.

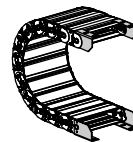
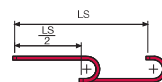
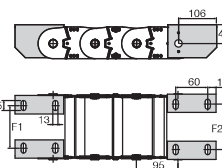


Fig. A Chain fixed outer radius. (Fig A)



The red marking in the diagram area considers the difference of weight between various widths of chain.

For applications with  $\frac{LS}{2}$  and weights not included in the area of the diagram showing self-supporting capacity, verify the possible use of support rollers (see page 30).

Chain Type	F1 mm	F2 mm
30LC106	77	83
30LC156	127	133
30LC206	177	183
30LC256	227	233
30LC306	277	283
30LC356	327	333
30LC406	377	383
30LC456	427	433
30LC506	477	483

Special widths  
F1=A-63 F2=A-57

### Bright Zinc Plated Steel Type Part Numbers

Complete Set Assembled	
Chain	End Brackets
Type	Set
30LC...	A30LCK□□*
Complete Set Unassembled	
Chain	End Brackets
Type	Set
30LC...	A30LCK

\* 1=Pos.1; 2=Pos.2; 3=Pos.3

## Serie Steel

# 30LC

Bright zinc plated steel cable chain with aluminium covers



Suitable to long travel distance. See page 221