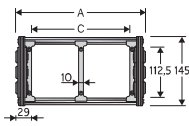


Serie Steel

40LT

Bright zinc plated steel cable chain with Alu-frames

Inner height (D) 112,5 mm
Bright Zinc Plated Steel Cable Chain.¹
Aluminium Hotted cross pieces designed or Alu-Frame are mounted each every link. Quote C can be in special quote.
¹ available in Stainless Steel.



| Separator | |
|---------------|-------------------|
| - Unassembled | Partno S310TCF9 |
| - Assembled | Partno S310TCF9MC |

Technical characteristics when self-supported

| | |
|--------------|--------------------|
| Speed | 0,5 m/s |
| Acceleration | 2 m/s ² |

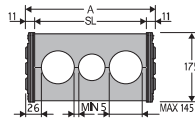
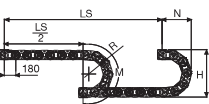
For higher requirements please consult our technical dept.

For sliding applications, characteristics techniques may vary depending on the frequency, added weight and work environment.

Aluminium frames with nylon separators

| A | B | C | D | R | Weight/m | Chain |
|------|-----|-----|-------|--|----------|-----------------|
| mm | mm | mm | mm | mm | kg | Part Number |
| 208 | 145 | 150 | 112,5 | 28x300x35x400-45x200x65x200-70x750-850 | 19,30 | 40LT150 □□□ * |
| 258 | 145 | 200 | 112,5 | 28x300x35x400-45x200x65x200-70x750-850 | 19,76 | 40LT200 □□□ * |
| 308 | 145 | 250 | 112,5 | 28x300x35x400-45x200x65x200-70x750-850 | 20,22 | 40LT250 □□□ * |
| 358 | 145 | 300 | 112,5 | 28x300x35x400-45x200x65x200-70x750-850 | 20,68 | 40LT300 □□□ * |
| 458 | 145 | 400 | 112,5 | 28x300x35x400-45x200x65x200-70x750-850 | 21,61 | 40LT400 □□□ * |
| 558 | 145 | 500 | 112,5 | 28x300x35x400-45x200x65x200-70x750-850 | 22,53 | 40LT500 □□□ * |
| C+58 | 145 | ... | 112,5 | 28x300x35x400-45x200x65x200-70x750-850 | | 40LT □□□ □□□ ** |

*Complete the code by inserting the value of the radius (R): Ex. 40LT150 □□□ □□
**Complete the code by inserting the value of the quote C and the radius (R): Ex. 40LT □□□ □□□ □□□



| R | H* | N | M | N1 | M1 |
|------|------|------|------|------|------|
| mm | mm | mm | mm | mm | mm |
| 250 | 664 | 510 | 1150 | 1545 | 3285 |
| 300 | 764 | 555 | 1305 | 1755 | 3790 |
| 350 | 864 | 605 | 1460 | 1950 | 4295 |
| 400 | 964 | 655 | 1620 | 2125 | 4715 |
| 450 | 1064 | 710 | 1780 | 2295 | 5150 |
| 500 | 1164 | 755 | 1930 | 2455 | 5570 |
| 550 | 1264 | 805 | 2090 | 2605 | 5975 |
| 600 | 1364 | 855 | 2245 | 2755 | 6375 |
| 700 | 1564 | 955 | 2560 | 3035 | 7155 |
| 750 | 1664 | 1010 | 2720 | 3170 | 7535 |
| 850 | 1864 | 1105 | 3030 | 3430 | 8280 |
| 1000 | 2164 | 1255 | 3500 | - | - |

Machined Cross Frame

Machined cross frames 40LA available on request for bending radius listed below.
Custom solutions for machined cross frames realization, based on customer's and/or specific requirements.

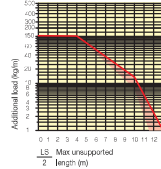
Please contact Brevetti Stendatto's Technical Department for further information.

* The height H should be increased by 10 mm approx. because of preload. In case of limitation to available space, refer to the Technical Deptm.

Length of chain (L)
Half travel distance ($\frac{LS}{2}$)
plus length of curve (M) or (M1)
 $L = \frac{LS}{2} + M$ or $M1$

Self-Supporting Capacity Diagram

The maximum length of the self-supporting capacity ($\frac{LS}{2}$) in relationship to the weight of the cables and hoses contained per linear metre.

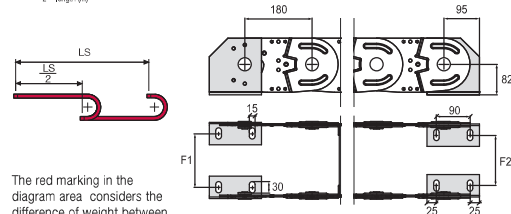


Bright Zinc Plated Steel End Brackets

The end brackets set, containing four steel plates screwed to the links allows the two ends of the chain to be attached to the equipment.



Fig. A Chain fixed outer radius (Fig. A) See mounting variations page 31



The red marking in the diagram area considers the difference of weight between various widths of chain.

For applications with LS and weights not included in the area of the diagram showing self-supporting capacity, verify the possible use of support rollers (see page 30).

| Chain type | F1 mm | Chain type | F2 mm |
|----------------|--------|----------------|--------|
| 40LT150 | 135 | 40LT150 | 144 |
| 40LT200 | 185 | 40LT200 | 194 |
| 40LT250 | 235 | 40LT250 | 244 |
| 40LT300 | 285 | 40LT300 | 294 |
| 40LT400 | 385 | 40LT400 | 394 |
| 40LT500 | 485 | 40LT500 | 494 |
| Special Widths | F=A-73 | Special Widths | F=A-64 |

Bright Zinc Plated Steel Type Part Numbers

| Complete Set Assembled | Chain | End Brackets type |
|--------------------------|-------------|-------------------|
| 40... | A40LKM □ ** | |
| Complete Set Unassembled | Chain | End Brackets type |
| 40... | A40LK | |

** 1=Pos. 1; 2=Pos. 2; 3=Pos. 3 See mounting variations page 31

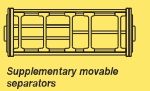
Serie Steel

40LT

Bright zinc plated steel cable chain with Alu-frame



Suitable to long travel distance See page 223



Supplementary movable separators

For further information please consult Brevetti Stendatto's Technical Office