



**BOTECO®**

**YOUR MECHANICAL COMPONENT**

## GROUP - A

### FIXED AND INDEXED CLAMPING LEVERS





At last you have discovered  
the right supplies for your **NEEDS!**



**BOTECO®**

# A200



## ALUMINIUM CAM LEVER WITH THREADED INSERT AND STEEL THRUST WASHER

### Materials:

(1) Aluminium alloy lever body (EN-AC-46200).

### Surface finish:

Fine sandblasted satin finish.

### Colour:

Epoxy powder coated, black (RAL 9011).

### Inserts:

(2) Turned stainless steel (Aisi 303) rotating pin, with threaded through hole for fastening the pin (thread tolerance 6H).

(4) Thrust washer, black reinforced PA66 (RAL 9011).

(3) A200:

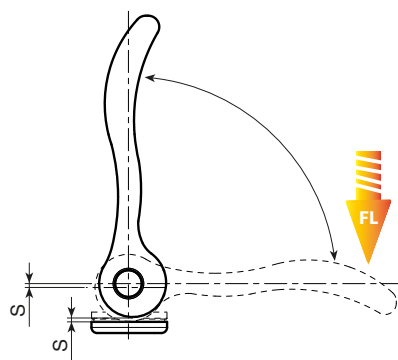
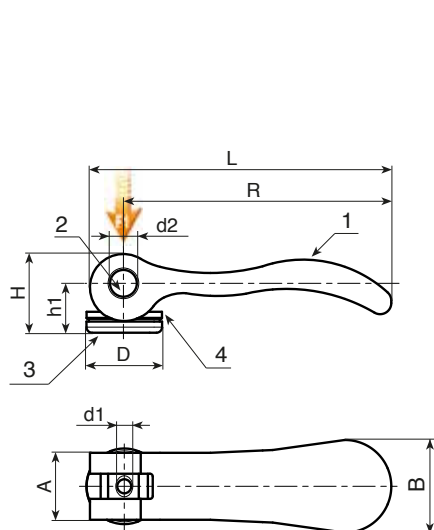
Galvanised steel washer with strength class 5.8.

(3) A200CIN:

Stainless steel washer (Aisi 303).

### Special requests:

- The levers are available, upon request, in red; order code ending with the number 16, (Example: A200096.AM0816).



### Version with galvanised steel inserts

Art.	L	R	H	D	A	B	h1	S	d2	d1 <sub>6H</sub>	g	F1 (kN)	FL (N)
A200036.AM0301	42	36	13	12	11,5	14,5	9	1	6	M3	10	1,5	90
A200036.AM0401	42	36	13	12	11,5	14,5	9	1	6	M4	10	1,5	90
A200052.AM0401	59	52	17	15,5	13	18	11	1	8	M4	18	2,5	100
A200052.AM0501	59	52	17	15,5	13	18	11	1	8	M5	18	2,5	100
A200070.AM0501	79	70,5	22	18	15	21,5	14,5	1,2	9	M5	32	4	120
A200070.AM0601	79	70,5	22	18	15	21,5	14,5	1,2	9	M6	32	4	120
A200096.AM0801	108	96	28.5	27	33	24	18	1.5	11	M8	98	8	350

### Version with Aisi 303 stainless steel inserts

Art.	L	R	H	D	A	B	h1	S	d2	d1 <sub>6H</sub>	g	F1 (kN)	FL (N)
A200036.AM0301CIN	42	36	13	12	11,5	14,5	9	1	6	M3	10	1,5	90
A200036.AM0401CIN	42	36	13	12	11,5	14,5	9	1	6	M4	10	1,5	90
A200052.AM0401CIN	59	52	17	15,5	13	18	11	1	8	M4	18	2,5	100
A200052.AM0501CIN	59	52	17	15,5	13	18	11	1	8	M5	18	2,5	100
A200070.AM0501CIN	79	70,5	22	18	15	21,5	14,5	1,2	9	M5	32	4	120
A200070.AM0601CIN	79	70,5	22	18	15	21,5	14,5	1,2	9	M6	32	4	120
A200096.AM0801CIN	108	96	28.5	27	33	24	18	1.5	11	M8	98	8	350



# A201



## ALUMINIUM CAM LEVER WITH THREADED STUD AND STEEL THRUST WASHER

### Materials:

(1) Aluminium alloy lever body (EN-AC-46200).

### Surface finish:

Fine sandblasted satin finish.

### Colour:

Epoxy powder coated, black (RAL 9011).

### Inserts:

(2) Turned stainless steel (Aisi 303) rotating pin, with threaded through hole for fastening the pin (thread tolerance 6H).

(4) Thrust washer, black reinforced PA66 (RAL 9011).

Stainless steel threaded stud (Aisi303) (thread tolerance 6g).

### (3) A201:

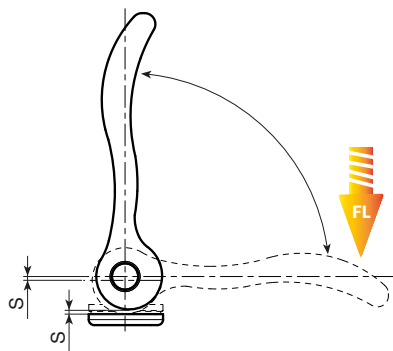
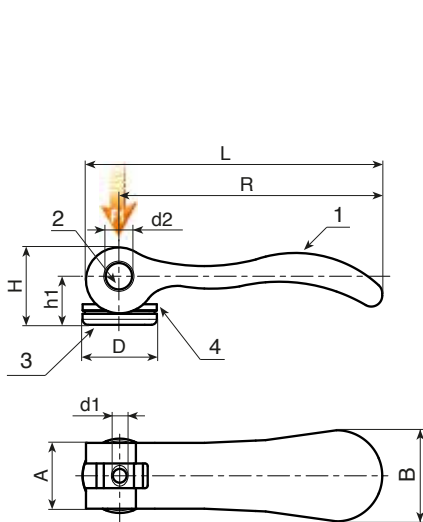
Galvanised steel washer with strength class 5.8.

### (3) A201CIN:

Stainless steel washer (Aisi 303).

### Special requests:

- The levers are available, upon request, in red; order code ending with the number 16, (Example: A200096.AM0816).



### Version with galvanised steel inserts

Art.	L	R	H	D	A	B	h1	S	d2	d1 <sub>6g</sub>	Q	g	F1 (kN)	FL (N)
A201036.AM03X..01	42	36	13	12	11,5	14,5	9	1	6	M3	10-15-30	8-9-11	1,5	90
A201036.AM04X..01	42	36	13	12	11,5	14,5	9	1	6	M4	10-15-30	9-10-12	1,5	90
A201052.AM04X..01	59	52	17	15,5	13	18	11	1	8	M4	15-20-30	18-19-20	2,5	100
A201052.AM05X..01	59	52	17	15,5	13	18	11	1	8	M5	20-30-40-50	22-23-24-26	2,5	100
A201070.AM05X..01	79	70,5	22	18	15	21,5	14,5	1,2	9	M5	20-30-40-50	38-40-42-44	4	120
A201070.AM06X..01	79	70,5	22	18	15	21,5	14,5	1,2	9	M6	20-30-40-50	40-42-44-46	4	120
A201096.AM08X..01	108	96	28,5	27	33	24	18	1,5	11	M8	25-30-40-50	114-116-119-121	8	350
A201096.AM10X..01	108	96	28,5	27	33	24	18	1,5	11	M10	25-30-40-50	121-123-127-132	8	350

Enter the selected stud length in place of the two dots . . in the item code.

### Version with Aisi 303 stainless steel inserts

Art.	L	R	H	D	A	B	h1	S	d2	d1 <sub>6g</sub>	Q	g	F1 (kN)	FL (N)
A201036.AM03X..01CIN	42	36	13	12	11,5	14,5	9	1	6	M3	10-15-30	8-9-11	1,5	90
A201036.AM04X..01CIN	42	36	13	12	11,5	14,5	9	1	6	M4	10-15-30	9-10-12	1,5	90
A201052.AM04X..01CIN	59	52	17	15,5	13	18	11	1	8	M4	15-20-30	18-19-20	2,5	100
A201052.AM05X..01CIN	59	52	17	15,5	13	18	11	1	8	M5	20-30-40-50	22-23-24-26	2,5	100
A201070.AM05X..01CIN	79	70,5	22	18	15	21,5	14,5	1,2	9	M5	20-30-40-50	38-40-42-44	4	120
A201070.AM06X..01CIN	79	70,5	22	18	15	21,5	14,5	1,2	9	M6	20-30-40-50	40-42-44-46	4	120
A201096.AM08X..01CIN	108	96	28,5	27	33	24	18	1,5	11	M8	25-30-40-50	114-116-119-121	8	350
A201096.AM10X..01CIN	108	96	28,5	27	33	24	18	1,5	11	M10	25-30-40-50	121-123-127-132	8	350

Enter the selected stud length in place of the two dots . . in the item code.



Stock availability as % (🛒)  
90% (●) - 40% (●) - 5% (●)



# MAKE LEVER ON BENEFITS

---

[www.boteco.com](http://www.boteco.com)



**BOTECO**<sup>®</sup>  
YOUR MECHANICAL COMPONENT

# A580



## "EUROMODEL" INDEXED CLAMPING LEVER WITH THREADED INSERT

### Materials:

Special technopolymer reinforced with high-strength glass fiber.  
Resistant to oils and greases.

### Surface finish:

Satin.

### Lever body and insert colour:

Black (RAL 9011).

### Inserts:

Galvanised steel insert with female threaded hole (thread tolerance 6H).

### Fixing screw:

Black oxide treated steel screw with hexagon socket head.  
(\* ) Black oxide treated steel screw with slotted head.

### Spring:

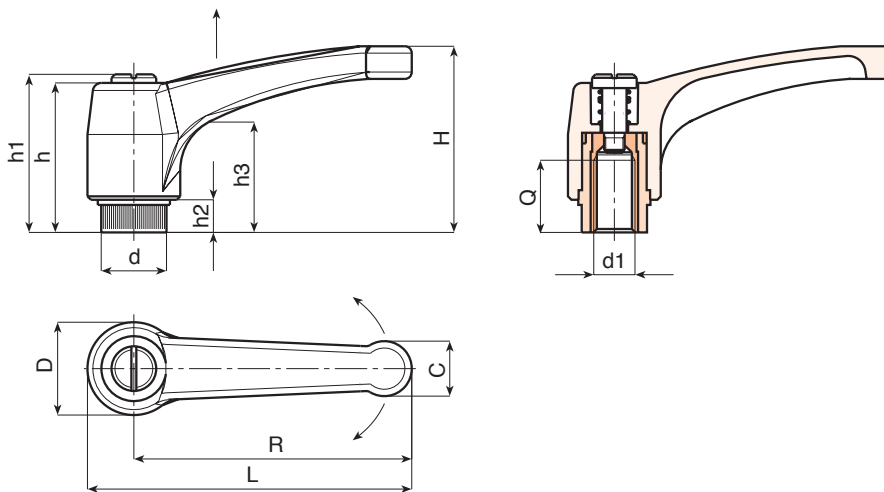
Stainless steel spring (Aisi 302).

### Alternative lever body colours:

Orange (RAL 2004 cod. 02).  
Blue (RAL 5015 cod. 07).  
Yellow (RAL 1021 cod. 10).  
Red (RAL 3000 cod. 16).  
Green (RAL 6024 cod. 17).  
Grey (RAL 7035 cod. 13).

### Special requests:

- Upon request and for special quantities inserts can be supplied in different materials.
- Upon request and for special quantities available in the colours indicated in the chart (attention: reduced range) [page 807].



Art.	L	R	H	D	d	c	h	h1	h2	h3	d16H	Q	g
A580043.TM0401	51	43	33	17	11.5	9	29	32	6	18	M4	8	15
A580043.TM0501	51	43	33	17	11.5	9	29	32	6	18	M5	10	15
A580043.TM0601	51	43	33	17	11.5	9	29	32	6	18	M6	10	14
*A580052.TM0601	63	52	41	22	15	12	36	40	8	23	M6	14	31
*A580052.TM0801	63	52	41	22	15	12	36	40	8	23	M8	14	30
*A580052.TM1001	63	52	41	22	15	12	36	40	8	23	M10	14	30
A580065.TM0601	76	65	43	23	15	13	36	40	8	24	M6	14	36
A580065.TM0801	76	65	43	23	15	13	36	40	8	24	M8	14	35
A580065.TM1001	76	65	43	23	15	13	36	40	8	24	M10	14	35
A580080.TM0801	93	80	54	27	19	15.5	44	48	8.5	29	M8	19	55
A580080.TM1001	93	80	54	27	19	15.5	44	48	8.5	29	M10	19	54
A580080.TM1201	93	80	54	27	19	15.5	44	48	8.5	29	M12	19	54
*A580094.TM0801	109	94	56	30	19	18	45	49	9	30	M8	19	80
*A580094.TM1001	109	94	56	30	19	18	45	49	9	30	M10	19	81
*A580094.TM1201	109	94	56	30	19	18	45	49	9	30	M12	19	83
A580108.TM1201	125	108	64	34	24	21	51	55	10	35	M12	22	144
A580108.TM1401	125	108	64	34	24	21	51	55	10	35	M14	21	146
A580108.TM1601	125	108	64	34	24	21	51	55	10	35	M16	23	149

# A582



## “EUROMODEL” INDEXED CLAMPING LEVER WITH PLASTIC BUTTON AND THREADED INSERT

### Materials:

Special technopolymer reinforced with high-strength glass fiber.  
Resistant to oils and greases.

### Surface finish:

Satin.

### Lever body and insert colour:

Black (RAL 9011).

### Inserts:

Brass insert with female threaded hole (thread tolerance 6H).

### Button:

Black polyamide button (RAL 9011).

### Spring:

Stainless steel spring (Aisi 302).

### Alternative lever body and button colours:

Orange (RAL 2004 cod. 02).

Blue (RAL 5015 cod. 07).

Yellow (RAL 1021 cod. 10).

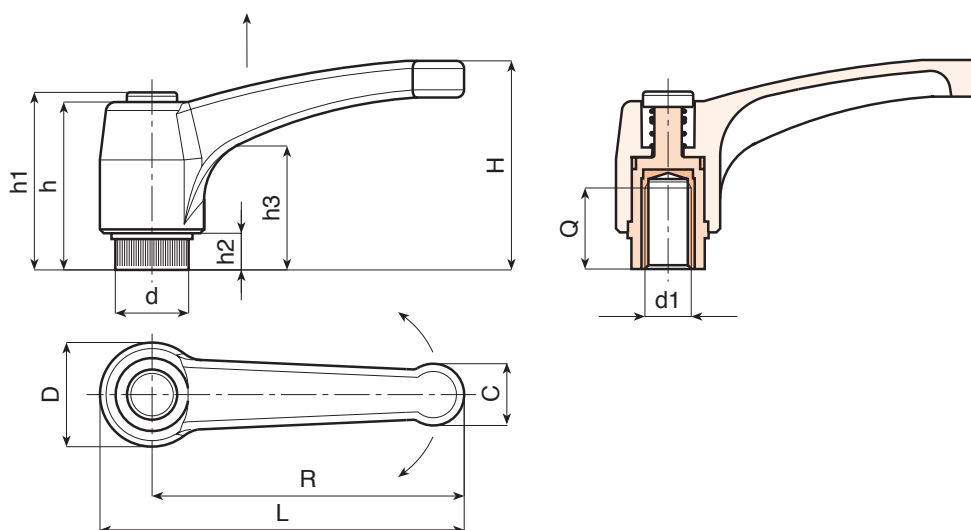
Red (RAL 3000 cod. 16).

Green (RAL 6024 cod. 17).

Grey (RAL 7035 cod. 13).

### Special requests:

- Upon request and for special quantities inserts can be supplied in different materials.
- Upon request and for special quantities available in the colours indicated in the chart (attention: reduced range) [page 807].



🛒	Art.	L	R	H	D	d	c	h	h1	h2	h3	d16H	Q	🔒
●	A582043.TM0401	51	43	33	17	11.5	9	29	32	6	18	M4	8	15
●	A582043.TM0501	51	43	33	17	11.5	9	29	32	6	18	M5	10	15
●	A582043.TM0601	51	43	33	17	11.5	9	29	32	6	18	M6	10	14
●	A582052.TM0601	63	52	41	22	15	12	36	40	8	23	M6	14	31
●	A582052.TM0801	63	52	41	22	15	12	36	40	8	23	M8	14	30
●	A582052.TM1001	63	52	41	22	15	12	36	40	8	23	M10	14	30
●	A582065.TM0601	76	65	43	23	15	13	36	40	8	24	M6	14	36
●	A582065.TM0801	76	65	43	23	15	13	36	40	8	24	M8	14	35
●	A582065.TM1001	76	65	43	23	15	13	36	40	8	24	M10	14	35
●	A582080.TM0801	93	80	54	27	19	15.5	44	48	8.5	29	M8	19	55
●	A582080.TM1001	93	80	54	27	19	15.5	44	48	8.5	29	M10	19	54
●	A582080.TM1201	93	80	54	27	19	15.5	44	48	8.5	29	M12	19	54
●	A582094.TM0801	109	94	56	30	19	18	45	49	9	30	M8	19	80
●	A582094.TM1001	109	94	56	30	19	18	45	49	9	30	M10	19	81
●	A582094.TM1201	109	94	56	30	19	18	45	49	9	30	M12	19	83
●	A582108.TM1201	125	108	64	34	24	21	51	55	10	35	M12	22	144
●	A582108.TM1401	125	108	64	34	24	21	51	55	10	35	M14	21	146
●	A582108.TM1601	125	108	64	34	24	21	51	55	10	35	M16	23	149

# A581



## “EUROMODEL” INDEXED CLAMPING LEVER WITH THREADED STUD

### Materials:

Special technopolymer reinforced with high-strength glass fiber.  
Resistant to oils and greases.

### Surface finish:

Satin.

### Lever body and insert colour:

Black (RAL 9011).

### Inserts:

Galvanised steel threaded stud (thread tolerance 6g).

### Fixing screw:

Black oxide treated steel screw with hexagon socket head.  
(R52-R94) Black oxide treated steel screw with slotted head.

### Spring:

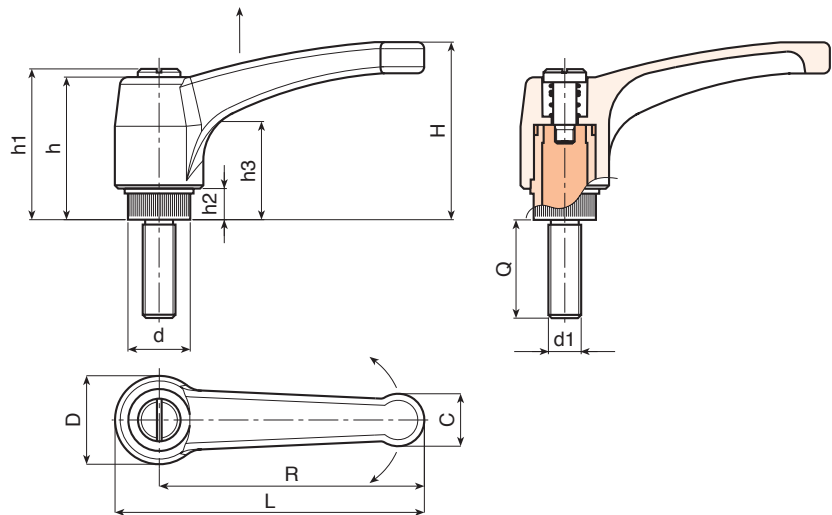
Stainless steel spring (Aisi 302).

### Alternative lever body colours:

Orange (RAL 2004 cod. 02).  
Blue (RAL 5015 cod. 07).  
Yellow (RAL 1021 cod. 10).  
Red (RAL 3000 cod. 16).  
Green (RAL 6024 cod. 17).  
Grey (RAL 7035 cod. 13).

### Special requests:

- Upon request and for special quantities inserts can be supplied with customised lengths.
- Upon request and for special quantities inserts can be supplied in different materials.
- Upon request and for special quantities available in the colours indicated in the chart (attention: reduced range) [page 807].



Art.	L	R	H	D	d	c	h	h1	h2	h3	LM	d1 <sub>6g</sub>	Q	g
A581043.TM04X..01	51	43	33	17	11.5	9	29	32	6	18	60	M4	10-16-20-25-30-40	18-19-19-20-21-21,5
A581043.TM05X..01	51	43	33	17	11.5	9	29	32	6	18	60	M5	10-16-20-25-30-40	20-20-21-22-22-23
A581043.TM06X..01	51	43	33	17	11.5	9	29	32	6	18	60	M6	10-16-20-25-30-40-50	19-21-22-23-24-25-26
A581052.TM06X..01	63	52	41	22	15	12	36	40	8	23	60	M6	16-20-25-30-35-40-50	38-38-39-40-41-42-43
A581052.TM08X..01	63	52	41	22	15	12	36	40	8	23	60	M8	16-20-25-30-35-40-45-50	38-40-42-43-45-46-47-49
A581065.TM06X..01	76	65	43	23	15	13	36	40	8	24	60	M6	16-20-25-30-35-40-45-50	40-40-41-42-43-44-44-46
A581065.TM08X..01	76	65	43	23	15	13	36	40	8	24	60	M8	16-20-25-30-35-40-45-50	42-44-46-47-49-50-52-54
A581080.TM08X..01	93	80	54	27	19	15.5	44	48	8.5	29	90	M8	20-25-30-35-40-45-50	66-67-69-70,5-72-74-76
A581080.TM10X..01	93	80	54	27	19	15.5	44	48	8.5	29	90	M10	20-25-30-35-40-45-50	74-76,5-79-81,5-84-87
A581080.TM12X..01	93	80	54	27	19	15.5	44	48	8.5	29	90	M12	20-25-30-35-40-50	89-92-95-99-101-108
A581094.TM08X..01	109	94	56	30	19	18	45	49	9	30	90	M8	20-25-30-35-40-50	73-74-76-78-79-81
A581094.TM10X..01	109	94	56	30	19	18	45	49	9	30	90	M10	20-25-30-35-40-50	79-80-81-84-86-88
A581094.TM12X..01	109	94	56	30	19	18	45	49	9	30	90	M12	20-25-30-35-40-50-60-70	96-97-99-102-106-108-115-123-130
A581108.TM12X..01	125	108	64	34	24	21	51	55	10	35	90	M12	20-30-40-50-60-70	137-144-151-158-165-172
A581108.TM14X..01	125	108	64	34	24	21	51	55	10	35	90	M14	30-40-50-60	150-157-164-171
A581108.TM16X..01	125	108	64	34	24	21	51	55	10	35	90	M16	40-50-60	175-187-199

Enter the selected stud length in place of the two dots . . in the item code. Customised stud length available for a minimum of 100 pieces.



Stock availability as % (🛒)  
90% (●) - 40% (●) - 5% (●)



# A583



## “EUROMODEL” INDEXED CLAMPING LEVER WITH BUTTON AND THREADED STUD

### Materials:

Special technopolymer reinforced with high-strength glass fiber.  
Resistant to oils and greases.

### Surface finish:

Satin.

### Lever body and insert colour:

Black (RAL 9011).

### Inserts:

Galvanised steel threaded stud (tolerance 6g).

### Button:

Black polyamide button (RAL 9011).

### Spring:

Stainless steel spring (Aisi 302).

### Alternative lever body and button colours:

Orange (RAL 2004 cod. 02).

Blue (RAL 5015 cod. 07).

Yellow (RAL 1021 cod. 10).

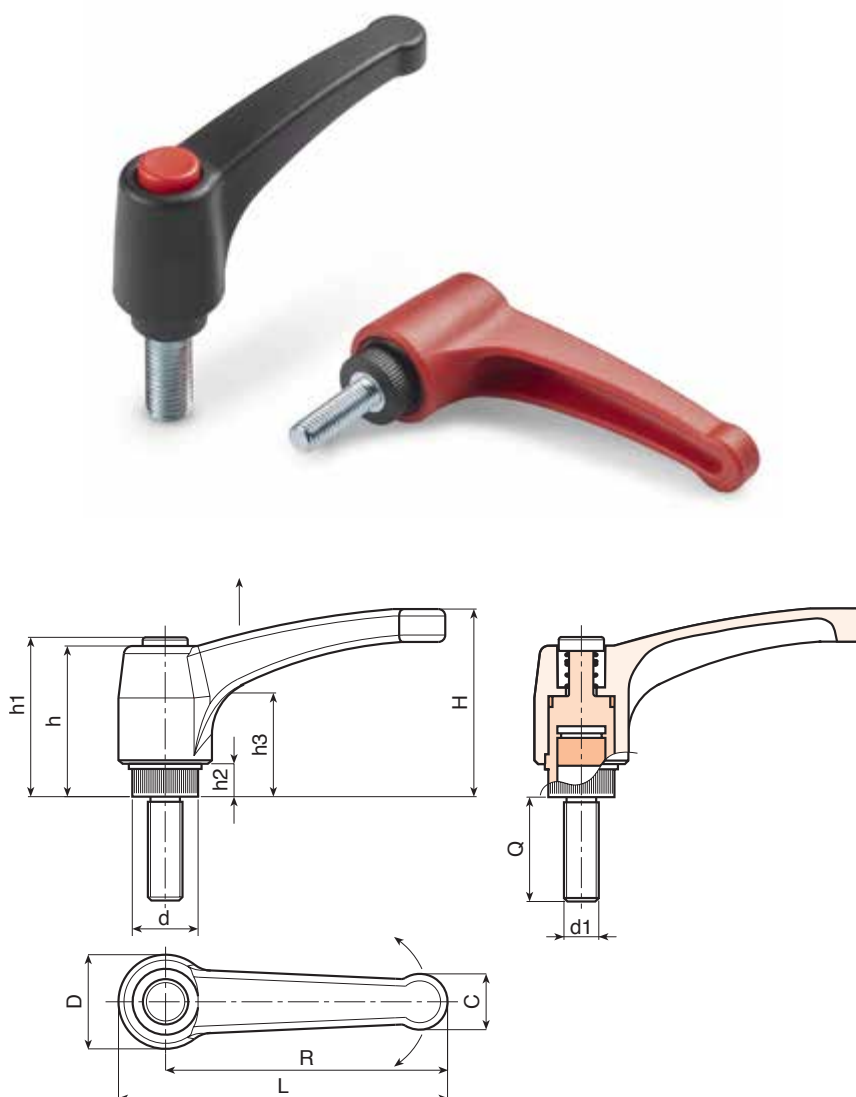
Red (RAL 3000 cod. 16).

Green (RAL 6024 cod. 17).

Grey (RAL 7035 cod. 13).

### Special requests:

- Upon request and for special quantities inserts can be supplied with customised lengths.
- Upon request and for special quantities inserts can be supplied in different materials.
- Upon request and for special quantities available in the colours indicated in the chart (attention: reduced range) [page 807].



Art.	L	R	H	D	d	c	h	h1	h2	h3	LM	d1 <sub>6g</sub>	Q	g
A583043.TM04X..01	51	43	33	17	11.5	9	29	32	6	18	75	M4	10-16-20-25-30-40	9-10-10-11-11-12
A583043.TM05X..01	51	43	33	17	11.5	9	29	32	6	18	75	M5	10-16-20-25-30-40	12-13-13-14-15-16
A583043.TM06X..01	51	43	33	17	11.5	9	29	32	6	18	75	M6	10-16-20-25-30-40-50	14-15-15,5-16-16,5-18-19,5
A583052.TM06X..01	63	52	41	22	15	12	36	40	8	23	90	M6	16-20-25-30-35-40-50	22-23-24-25-26-27-28
A583052.TM08X..01	63	52	41	22	15	12	36	40	8	23	90	M8	16-20-25-30-35-40-45-50	24-25-27-28,5-30-31,5-33-34,5
A583052.TM10X..01	63	52	41	22	15	12	36	40	8	23	90	M10	20-25-30-35-40-50	31-33,5-36-38,5-41-46
A583065.TM06X..01	76	65	43	23	15	13	36	40	8	24	90	M6	16-20-25-30-35-40-45-50	26-27-27-28-28-29-30
A583065.TM08X..01	76	65	43	23	15	13	36	40	8	24	90	M8	16-20-25-30-35-40-45-50	31,5-33-34,5-36-37,5-39-41-42,5-44
A583065.TM10X..01	76	65	43	23	15	13	36	40	8	24	90	M10	20-25-30-35-40-45-50	37-39,5-42-44,5-47-49,5-52
A583080.TM08X..01	93	80	54	27	19	15,5	44	48	8,5	29	90	M8	20-25-30-35-40-50	47-49-50,5-52-54-57
A583080.TM10X..01	93	80	54	27	19	15,5	44	48	8,5	29	90	M10	20-25-30-35-40-45-50	54-56,5-59-61,5-64-66,5-69-74-79
A583080.TM12X..01	93	80	54	27	19	15,5	44	48	8,5	29	90	M12	20-25-30-35-40-50-60-70	65-69-72-75-79-83-86-93-100-107
A583094.TM08X..01	109	94	56	30	19	18	45	49	9	30	90	M8	20-25-30-35-40-50	55-57-58-60-62-65
A583094.TM10X..01	109	94	56	30	19	18	45	49	9	30	90	M10	20-25-30-35	62-67-69-72
A583094.TM12X..01	109	94	56	30	19	18	45	49	9	30	90	M12	20-25-30-35-40-50-60-70	73-80-83-87-91-94-101-108-115
A583108.TM12X..01	125	108	64	34	24	21	51	55	10	35	100	M12	20-30-40-50-60-70	101-108-115-122-129-136
A583108.TM14X..01	125	108	64	34	24	21	51	55	10	35	100	M14	30-40-50-60	114-121-128-134
A583108.TM16X..01	125	108	64	34	24	21	51	55	10	35	100	M16	40-50-60	139-151-163

Enter the stud length in place of the two dots . . in the item code. Customised stud length available for a minimum of 50 pieces.

LM = Maximum mouldable length.



# A582CIN



## “EUROMODEL” INDEXED CLAMPING LEVER WITH BUTTON AND STAINLESS STEEL THREADED INSERT

INOX

### Materials:

Special technopolymer reinforced with high-strength glass fiber.  
Resistant to oils and greases.

### Surface finish:

Satin.

### Lever body and insert colour:

Black (RAL 9011).

### Inserts:

Stainless steel insert with female threaded hole (Aisi 303) (thread tolerance 6H).

### Button:

Black polyamide button (RAL 9011).

### Spring:

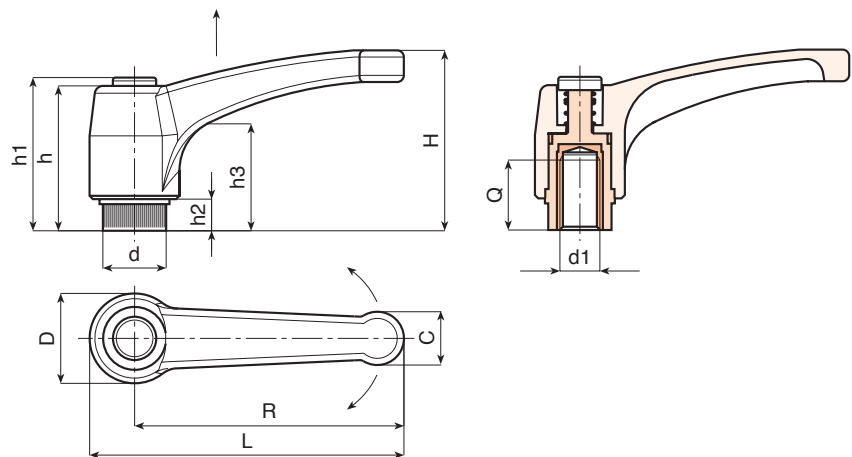
Stainless steel spring (Aisi 302).

### Alternative lever body and button colours:

Orange (RAL 2004 cod. 02).  
Blue (RAL 5015 cod. 07).  
Yellow (RAL 1021 cod. 10).  
Red (RAL 3000 cod. 16).  
Green (RAL 6024 cod. 17).  
Grey (RAL 7035 cod. 13).

### Special requests:

- Upon request and for special quantities available in the colours indicated in the chart (attention: reduced range) [page 807].



INOX

Art.	L	R	H	D	d	c	h	h1	h2	h3	d16H	Q	g
- A582043.TM0401CIN	51	43	33	17	11.5	9	29	32	6	18	M4	8	15
- A582043.TM0501CIN	51	43	33	17	11.5	9	29	32	6	18	M5	10	15
- A582043.TM0601CIN	51	43	33	17	11.5	9	29	32	6	18	M6	10	14
- A582052.TM0601CIN	63	52	41	22	15	12	36	40	8	23	M6	14	31
- A582052.TM0801CIN	63	52	41	22	15	12	36	40	8	23	M8	14	30
- A582065.TM0601CIN	76	65	43	23	15	13	36	40	8	24	M6	14	36
- A582065.TM0801CIN	76	65	43	23	15	13	36	40	8	24	M8	14	35
- A582080.TM0801CIN	93	80	54	27	19	15.5	44	48	8.5	29	M8	19	55
- A582080.TM1001CIN	93	80	54	27	19	15.5	44	48	8.5	29	M10	19	54
- A582080.TM1201CIN	93	80	54	27	19	15.5	44	48	8.5	29	M12	19	54
- A582094.TM0801CIN	109	94	56	30	19	18	45	49	9	30	M8	19	80
- A582094.TM1001CIN	109	94	56	30	19	18	45	49	9	30	M10	19	81
- A582094.TM1201CIN	109	94	56	30	19	18	45	49	9	30	M12	19	83
- A582108.TM1201CIN	125	108	64	34	24	21	51	55	10	35	M12	22	144
- A582108.TM1401CIN	125	108	64	34	24	21	51	55	10	35	M14	21	146
- A582108.TM1601CIN	125	108	64	34	24	21	51	55	10	35	M16	23	149

# A583CIN



## “EUROMODEL” INDEXED CLAMPING LEVER WITH BUTTON AND STAINLESS STEEL THREADED STUD

INOX

### Materials:

Special technopolymer reinforced with high-strength glass fiber.  
Resistant to oils and greases.

### Surface finish:

Satin.

### Lever body and insert colour:

Black (RAL 9011).

### Inserts:

Stainless steel threaded stud (Aisi 303) (thread tolerance 6g).

### Button:

Black polyamide button (RAL 9011).

### Spring:

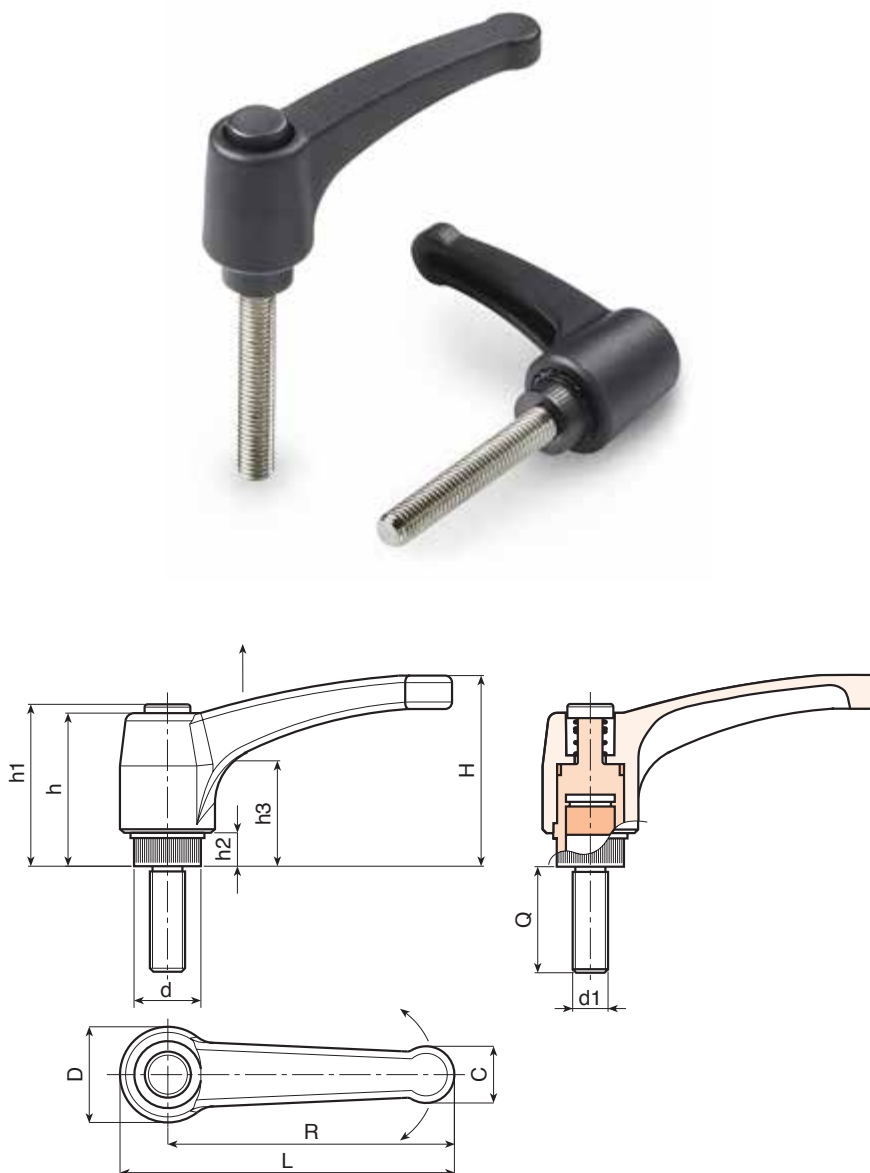
Stainless steel spring (Aisi 302).

### Alternative lever body and button colours:

Orange (RAL 2004 cod. 02).  
Blue (RAL 5015 cod. 07).  
Yellow (RAL 1021 cod. 10).  
Red (RAL 3000 cod. 16).  
Green (RAL 6024 cod. 17).  
Grey (RAL 7035 cod. 13).

### Special requests:

- Upon request and for special quantities inserts can be supplied with customised lengths.
- Upon request and for special quantities available in the colours indicated in the chart (attention: reduced range) [page 807].



INOX

Art.	L	R	H	D	d	c	h	h1	h2	h3	LM	d1 <sub>6g</sub>	Q	g
A583043.TM04X..01CIN	51	43	33	17	11.5	9	29	32	6	18	75	M4	16-20-30	12-13-14
A583043.TM05X..01CIN	51	43	33	17	11.5	9	29	32	6	18	75	M5	16-20-30	12-14-15
A583043.TM06X..01CIN	51	43	33	17	11.5	9	29	32	6	18	75	M6	16-20-30-40	17-18-20-22
A583052.TM06X..01CIN	63	52	41	22	15	12	36	40	8	23	90	M6	16-20-30-40	25-26-28-30
A583052.TM08X..01CIN	63	52	41	22	15	12	36	40	8	23	90	M8	16-20-30-40	27-28-31-33
A583052.TM10X..01CIN	63	52	41	22	15	12	36	40	8	23	90	M10	16-20-30-40	33-35-40-45
A583065.TM06X..01CIN	76	65	43	23	15	13	36	40	8	24	90	M6	16-20-30-40	28-29-31-32,5
A583065.TM08X..01CIN	76	65	43	23	15	13	36	40	8	24	90	M8	16-20-30-40	33-35-38-41
A583065.TM10X..01CIN	76	65	43	23	15	13	36	40	8	24	90	M10	16-20-30-40	39-41-46-51
A583080.TM08X..01CIN	93	80	54	27	19	15.5	44	48	8.5	29	90	M8	16-20-30-40-50	46-49-51-54-57
A583080.TM10X..01CIN	93	80	54	27	19	15.5	44	48	8.5	29	90	M10	20-30-40-50	56-61-66-71
A583080.TM12X..01CIN	93	80	54	27	19	15.5	44	48	8.5	29	90	M12	20-30-40-50	68-75-82-89
A583094.TM08X..01CIN	109	94	56	30	19	18	45	49	9	30	90	M8	20-30-40-50	52-55-58-61
A583094.TM10X..01CIN	109	94	56	30	19	18	45	49	9	30	90	M10	20-30-40-50	63-68-73-78
A583094.TM12X..01CIN	109	94	56	30	19	18	45	49	9	30	90	M12	20-30-40-50	75-82-89-96
A583108.TM12X..01CIN	125	108	64	34	24	21	51	55	10	35	100	M12	20-30-40-50	103-110-117-124
A583108.TM14X..01CIN	125	108	64	34	24	21	51	55	10	35	100	M14	20-30-40-50	109-116-123-136
A583108.TM16X..01CIN	125	108	64	34	24	21	51	55	10	35	100	M16	20-30-40-50	127-139-151-163

Enter the selected stud length in place of the two dots . . in the item code. Customised stud length available for a minimum of 50 pieces.

LM = Maximum mouldable length.



# A522

## INDEXED CLAMPING LEVER WITH THREADED INSERT



### Materials:

Special technopolymer reinforced with high-strength glass fiber.  
Resistant to oils and greases.

### Surface finish:

Satin.

### Lever body and insert colour:

Black (RAL 9011).

### Inserts:

Galvanised steel insert with female threaded hole (thread tolerance 6H).

### Fixing screw:

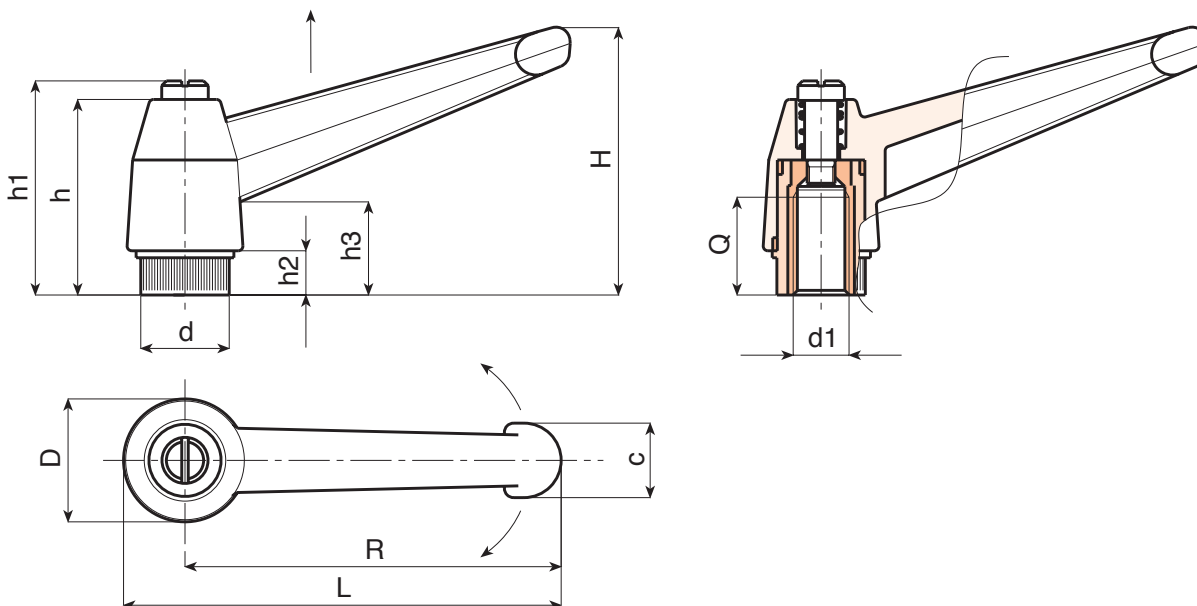
Black oxide treated steel screw with slotted head.

### Spring:

Stainless steel spring (Aisi 302).

### Special requests:

- Upon request and for special quantities inserts can be supplied in different materials.
- Upon request and for special quantities available in the colours indicated in the chart (attention: reduced range) [page 807].



Art.	L	R	H	D	d	c	h	h1	h2	h3	d1 <sub>6H</sub>	Q	g
A522043.TM0401	52	43	33	17	11.5	11	27	30	6	14	M4	10	14
A522043.TM0501	52	43	33	17	11.5	11	27	30	6	14	M5	9	14
A522043.TM0601	52	43	33	17	11.5	11	27	30	6	14	M6	9	14
A522065.TM0601	77	65	45	23	15	13	34	38	8	17	M6	15	28
A522065.TM0801	77	65	45	23	15	13	34	38	8	17	M8	15	26
A522065.TM1001	77	65	45	23	15	13	34	38	8	17	M10	13	28
A522083.TM0801	97	83	57	27	19	16	43	47	10	23	M8	17	52
A522083.TM1001	97	83	57	27	19	16	43	47	10	23	M10	17	48
A522083.TM1201	97	83	57	27	19	16	43	47	10	23	M12	16	48
A522104.TM1001	121	104	70	33	24	19	50	53	11	26	M10	20	114
A522104.TM1201	121	104	70	33	24	19	50	53	11	26	M12	22	106
A522104.TM1401	121	104	70	33	24	19	50	53	11	26	M14	21	100
A522104.TM1601	121	104	70	33	24	19	50	53	11	26	M16	23	100



Stock availability as % (🛒)  
90% (●) - 40% (●) - 5% (●)

# A562



## INDEXED CLAMPING LEVER WITH BUTTON AND THREADED INSERT

### Materials:

Special technopolymer reinforced with high-strength glass fiber.  
Resistant to oils and greases.

### Surface finish:

Satin.

### Lever body and insert colour:

Black (RAL 9011).

### Inserts:

Brass insert with female threaded hole (thread tolerance 6H).

### Button:

Black polyamide button (RAL 9011).

### Spring:

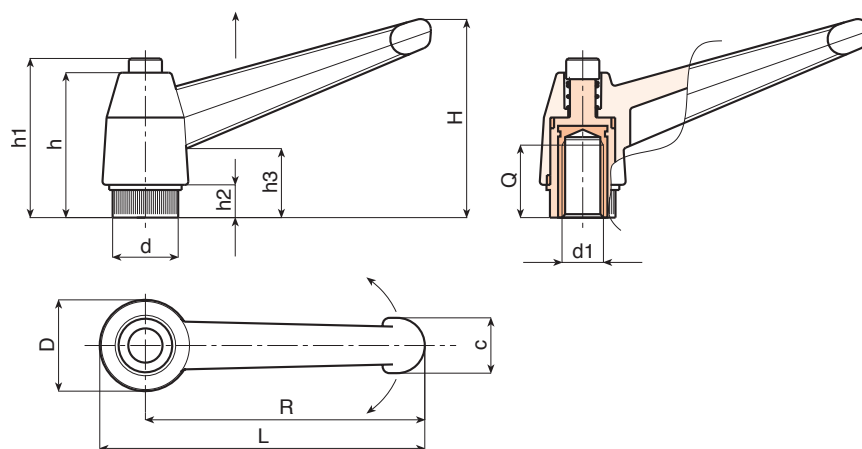
Stainless steel spring (Aisi 302).

### Alternative lever body and button colours:

Orange (RAL 2004 cod. 02).  
Blue (RAL 5015 cod. 07).  
Yellow (RAL 1021 cod. 10).  
Red (RAL 3000 cod. 16).  
Green (RAL 6024 cod. 17).  
Grey (RAL 7035 cod. 13).

### Special requests:

- Upon request and for special quantities inserts can be supplied in different materials.
- Upon request and for special quantities lever body and button available in the colours indicated in the chart [on page 807].



🛒	Art.	L	R	H	D	d	c	h	h1	h2	h3	d16H	Q	🔒
●	A562043.TM0401	52	43	33	17	11.5	11	27	30	6	14	M4	10	14
●	A562043.TM0501	52	43	33	17	11.5	11	27	30	6	14	M5	9	14
●	A562043.TM0601	52	43	33	17	11.5	11	27	30	6	14	M6	9	14
●	A562065.TM0601	77	65	45	23	15	13	34	38	8	17	M6	15	28
●	A562065.TM0801	77	65	45	23	15	13	34	38	8	17	M8	15	26
●	A562065.TM1001	77	65	45	23	15	13	34	38	8	17	M10	13	28
●	A562083.TM0801	97	83	57	27	19	16	43	47	10	23	M8	17	52
●	A562083.TM1001	97	83	57	27	19	16	43	47	10	23	M10	17	48
●	A562083.TM1201	97	83	57	27	19	16	43	47	10	23	M12	16	48
●	A562104.TM1001	121	104	70	33	24	19	50	53	11	26	M10	20	114
●	A562104.TM1201	121	104	70	33	24	19	50	53	11	26	M12	22	106
●	A562104.TM1401	121	104	70	33	24	19	50	53	11	26	M14	21	100
●	A562104.TM1601	121	104	70	33	24	19	50	53	11	26	M16	23	100

# A523

## INDEXED CLAMPING LEVER WITH THREADED STUD



### Materials:

Special technopolymer reinforced with high-strength glass fiber.  
Resistant to oils and greases.

### Surface finish:

Satin.

### Lever body and insert colour:

Black (RAL 9011).

### Inserts:

Galvanised steel threaded stud (tolerance 6g).

### Fixing screw:

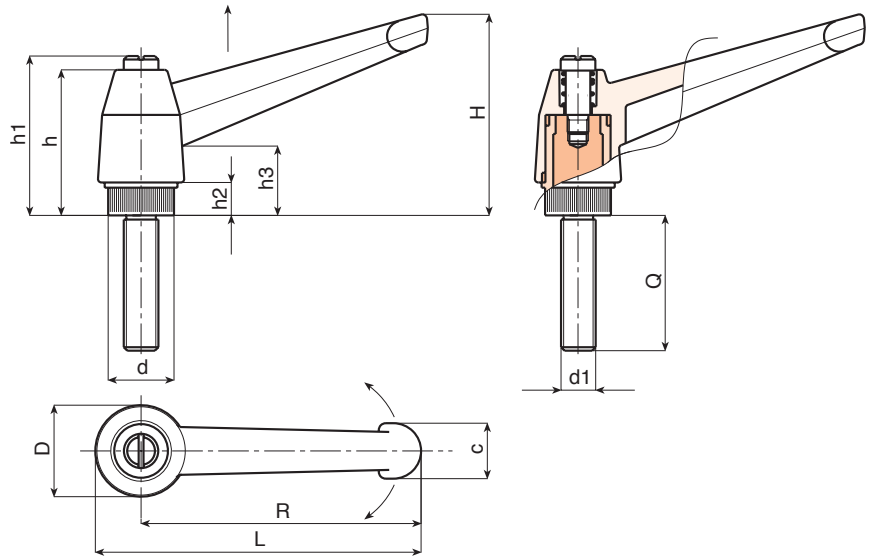
Black oxide treated steel screw with slotted head.

### Spring:

Stainless steel spring (Aisi 302).

### Special requests:

- Upon request and for special quantities inserts can be supplied with customised lengths.
- Upon request and for special quantities inserts can be supplied in different materials.
- Upon request and for special quantities available in the colours indicated in the chart (attention: reduced range) [page 807].



Art.	L	R	H	D	d	c	h	h1	h2	h3	LM	d1 <sub>6g</sub>	Q	g
A523043.TM04X..01	52	43	33	17	11.5	11	27	30	6	14	60	M4	10-16-20-25-30-40	16-16-17-18-18-19
A523043.TM05X..01	52	43	33	17	11.5	11	27	30	6	14	60	M5	10-16-20-25-30-40	16-17-17-17-18-19
A523043.TM06X..01	52	43	33	17	11.5	11	27	30	6	14	60	M6	10-16-20-25-30-40	18-18-19-20-20-21
A523065.TM06X..01	77	65	45	23	15	13	34	38	8	17	60	M6	16-20-25-30-40	33-34-35-37
A523065.TM08X..01	77	65	45	23	15	13	34	38	8	17	60	M8	16-20-25-30-35-40-45-50	35-37-38-40-42-43-44-46
A523083.TM08X..01	97	83	57	27	19	16	43	47	10	23	90	M8	20-25-30-35-40-50-60	58-59-61-62-64-67-70
A523083.TM10X..01	97	83	57	27	19	16	43	47	10	23	90	M10	20-25-30-35-40-50-60	67-70-72-74-77-82-87
A523083.TM12X..01	97	83	57	27	19	16	43	47	10	23	90	M12	20-25-30-35-40-50-60	79-82-86-89-93-100-107
A523104.TM10X..01	121	104	70	33	24	19	50	53	11	26	90	M10	20-30-40-50-60	109-114-119-124-129
A523104.TM12X..01	121	104	70	33	24	19	50	53	11	26	90	M12	20-30-40-50-60	115-122-129-136-143
A523104.TM14X..01	121	104	70	33	24	19	50	53	11	26	90	M14	30-40-50-60-70	140-150-160-170-180
A523104.TM16X..01	121	104	70	33	24	19	50	53	11	26	90	M16	30-40-50-60-70	156-170-184-198-212

Enter the selected stud length in place of the two dots . . in the item code. Customised stud length available for a minimum of 100 pieces.

LM = Maximum mouldable length.



Stock availability as % (🛒)  
90% (●) - 40% (●) - 5% (●)

# A563



## INDEXED CLAMPING LEVER WITH BUTTON AND THREADED STUD

### Materials:

Special technopolymer reinforced with high-strength glass fiber.  
Resistant to oils and greases.

### Surface finish:

Satin.

### Lever body and insert colour:

Black (RAL 9011).

### Inserts:

Galvanised steel threaded stud (thread tolerance 6g).

### Button:

Black polyamide button (RAL 9011).

### Spring:

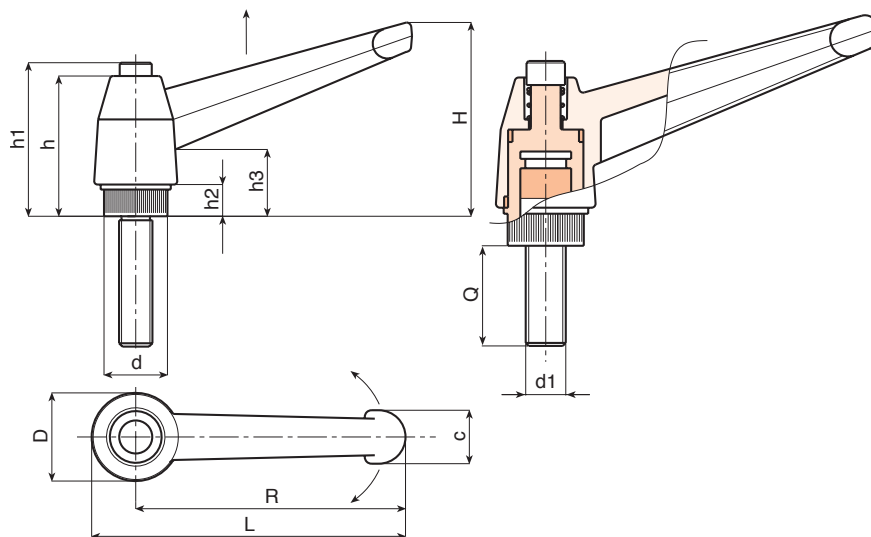
Stainless steel spring (Aisi 302).

### Alternative lever body and button colours:

Orange (RAL 2004 cod. 02).  
Blue (RAL 5015 cod. 07).  
Yellow (RAL 1021 cod. 10).  
Red (RAL 3000 cod. 16).  
Green (RAL 6024 cod. 17).  
Grey (RAL 7035 cod. 13).

### Special requests:

- Upon request and for special quantities inserts can be supplied with customised lengths.
- Upon request and for special quantities inserts can be supplied in different materials.
- Upon request and for special quantities available in the colours indicated in the chart (attention: reduced range) [page 807].



Art.	L	R	H	D	d	c	h	h1	h2	h3	LM	d1 <sub>6g</sub>	Q	g
A563043.TM04X..01	52	43	33	17	11.5	11	27	30	6	14	75	M4	10-16-20-25-30-40	8-8-9-9-10-11
A563043.TM05X..01	52	43	33	17	11.5	11	27	30	6	14	75	M5	10-16-20-25-30-40	11-12-13-13-14-14
A563043.TM06X..01	52	43	33	17	11.5	11	27	30	6	14	75	M6	10-16-20-25-30-35-40-50	11-12-14-15-16-17-18-20
A563065.TM06X..01	77	65	45	23	15	13	34	38	8	17	90	M6	16-20-25-30-35-40-45-50	22-23-24-25-26-27-28-29
A563065.TM08X..01	77	65	45	23	15	13	34	38	8	17	90	M8	16-20-25-30-35-40-45-50	25-26-27-29-30-32-33-35
A563065.TM10X..01	77	65	45	23	15	13	34	38	8	17	90	M10	20-25-30-35-40-50	31-33-36-39-41-46
A563083.TM08X..01	97	83	57	27	19	16	43	47	10	23	90	M8	20-25-30-35-40-50-60-70	42-44-45-47-48-51-54-57
A563083.TM10X..01	97	83	57	27	19	16	43	47	10	23	90	M10	20-25-30-35-40-45-50-60-70	50-53-55-57-60-63-65-70-75
A563083.TM12X..01	97	83	57	27	19	16	43	47	10	23	90	M12	20-25-30-35-40-50-60-70	62-65-69-72-76-83-90-97
A563104.TM12X..01	121	104	70	33	24	19	50	53	11	26	100	M12	20-25-30-35-40-50-60-70	84-87-91-96-98-105-112-119
A563104.TM14X..01	121	104	70	33	24	19	50	53	11	26	100	M14	20-25-30-35-40-50-60-70	90-95-100-105-110-120-130-140
A563104.TM16X..01	121	104	70	33	24	19	50	53	11	26	100	M16	20-30-40-50-60	108-120-132-146-158

Enter the selected stud length in place of the two dots . . in the item code. Customised stud length available for a minimum of 50 pieces.

LM = Maximum mouldable length.



# A562CIN

## INDEXED CLAMPING LEVER WITH BUTTON AND THREADED STAINLESS STEEL INSERT



INOX

### Materials:

Special technopolymer reinforced with high-strength glass fiber.  
Resistant to oils and greases.

### Surface finish:

Satin.

### Lever body and insert colour:

Black (RAL 9011).

### Inserts:

Stainless steel insert with female threaded hole (Aisi 303) (thread tolerance 6H).

### Button:

Black polyamide button (RAL 9011).

### Alternative lever body and button colours:

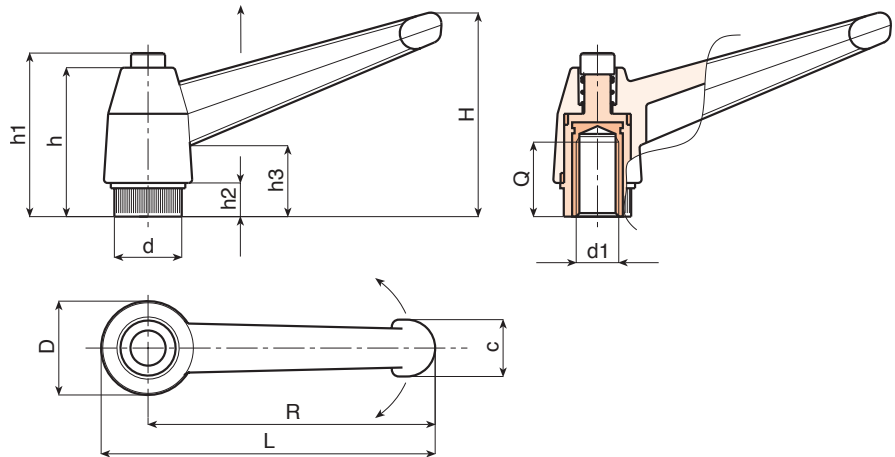
Orange (RAL 2004 cod. 02).  
Blue (RAL 5015 cod. 07).  
Yellow (RAL 1021 cod. 10).  
Red (RAL 3000 cod. 16).  
Green (RAL 6024 cod. 17).  
Grey (RAL 7035 cod. 13).

### Spring:

Stainless steel spring (Aisi 302).

### Special requests:

- Upon request and for special quantities available in the colours indicated in the chart (attention: reduced range) [page 807].



INOX

	Art.	L	R	H	D	d	c	h	h1	h2	h3	d16H	Q	
●	A562043.TM0401CIN	52	43	33	17	11.5	11	27	30	6	14	M4	10	14
●	A562043.TM0501CIN	52	43	33	17	11.5	11	27	30	6	14	M5	9	14
●	A562043.TM0601CIN	52	43	33	17	11.5	11	27	30	6	14	M6	9	14
●	A562065.TM0601CIN	77	65	45	23	15	13	34	38	8	17	M6	15	28
●	A562065.TM0801CIN	77	65	45	23	15	13	34	38	8	17	M8	15	26
●	A562083.TM0801CIN	97	83	57	27	19	16	43	47	10	23	M8	17	52
●	A562083.TM1001CIN	97	83	57	27	19	16	43	47	10	23	M10	17	48
●	A562083.TM1201CIN	97	83	57	27	19	16	43	47	10	23	M12	16	48
●	A562104.TM1001CIN	121	104	70	33	24	19	50	53	11	26	M10	20	114
●	A562104.TM1201CIN	121	104	70	33	24	19	50	53	11	26	M12	22	106
●	A562104.TM1401CIN	121	104	70	33	24	19	50	53	11	26	M14	21	100
●	A562104.TM1601CIN	121	104	70	33	24	19	50	53	11	26	M16	23	100





# A563CIN



## INDEXED CLAMPING LEVER WITH BUTTON AND THREADED STAINLESS STEEL STUD

INOX

### Materials:

Special technopolymer reinforced with high-strength glass fiber.  
Resistant to oils and greases.

### Surface finish:

Satin.

### Lever body and insert colour:

Black (RAL 9011).

### Inserts:

Stainless steel threaded stud (Aisi 303) (thread tolerance 6g).

### Button:

Black polyamide button (RAL 9011).

### Alternative lever body and button colours:

Orange (RAL 2004 cod. 02).

Blue (RAL 5015 cod. 07).

Yellow (RAL 1021 cod. 10).

Red (RAL 3000 cod. 16).

Green (RAL 6024 cod. 17).

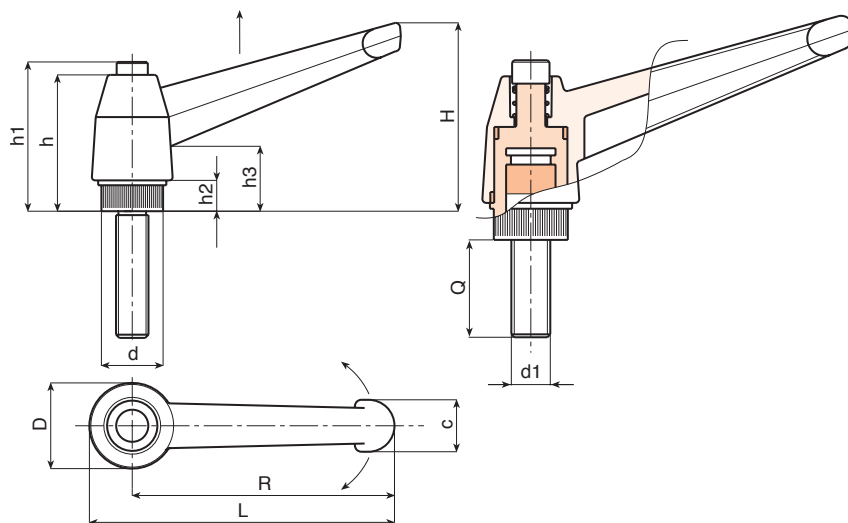
Grey (RAL 7035 cod. 13).

### Spring:

Stainless steel spring (Aisi 302).

### Special requests:

- Upon request and for special quantities inserts can be supplied with customised lengths.
- Upon request and for special quantities available in the colours indicated in the chart (attention: reduced range) [page 807].



INOX

Art.	L	R	H	D	d	c	h	h1	h2	h3	LM	d1 <sub>6g</sub>	Q	g
A563043.TM04X..01CIN	52	43	33	17	11.5	11	27	30	6	14	75	M4	16-20-30	10-11-12
A563043.TM05X..01CIN	52	43	33	17	11.5	11	27	30	6	14	75	M5	16-20-30	14-15-16
A563043.TM06X..01CIN	52	43	33	17	11.5	11	27	30	6	14	75	M6	16-20-30	15-16-18
A563065.TM06X..01CIN	77	65	45	23	15	13	34	38	8	17	90	M6	16-20-30-40	24-25-27-29
A563065.TM08X..01CIN	77	65	45	23	15	13	34	38	8	17	90	M8	16-20-30-40	27-28-31-34
A563065.TM10X..01CIN	77	65	45	23	15	13	34	38	8	17	90	M10	16-20-30-40	30-33-38-43
A563083.TM08X..01CIN	97	83	57	27	19	16	43	47	10	23	90	M8	20-30-40-50	44-47-50-53
A563083.TM10X..01CIN	97	83	57	27	19	16	43	47	10	23	90	M10	20-30-40-50	52-57-62-67
A563083.TM12X..01CIN	97	83	57	27	19	16	43	47	10	23	90	M12	20-30-40-50	61-64-71-78
A563104.TM12X..01CIN	121	104	70	33	24	19	50	53	11	26	100	M12	20-30-40-50	86-93-101-108
A563104.TM14X..01CIN	121	104	70	33	24	19	50	53	11	26	100	M14	20-30-40-50	92-102-112-122
A563104.TM16X..01CIN	121	104	70	33	24	19	50	53	11	26	100	M16	20-30-40-50	111-122-134-146

Enter the selected stud length in place of the two dots . . in the item code. Customised stud length available for a minimum of 50 pieces.

LM = Maximum mouldable length.



# A592



## INDEXED ZAMAK CLAMPING LEVER WITH THREADED INSERT

### Materials:

Lever body in die-cast zamak (zinc, aluminium and copper alloy).

### Surface finish:

Smooth. Epoxy powder coating.

### Lever body colour:

Glossy black (RAL 9005 cod. 01).  
 Matt black (RAL 9005 cod. 20).  
 Orange (RAL 2004 cod. 02).  
 Red (RAL 3000 cod. 16).  
 Silver (RAL 9006 cod. 83).  
 Grey (RAL 7031 cod. 80).  
 Blue (RAL 5015 cod. 07).  
 Untreated lever (code GRE).

### Inserts:

Black-oxide treated steel insert with female threaded hole (thread tolerance 6H).

### Fixing screw:

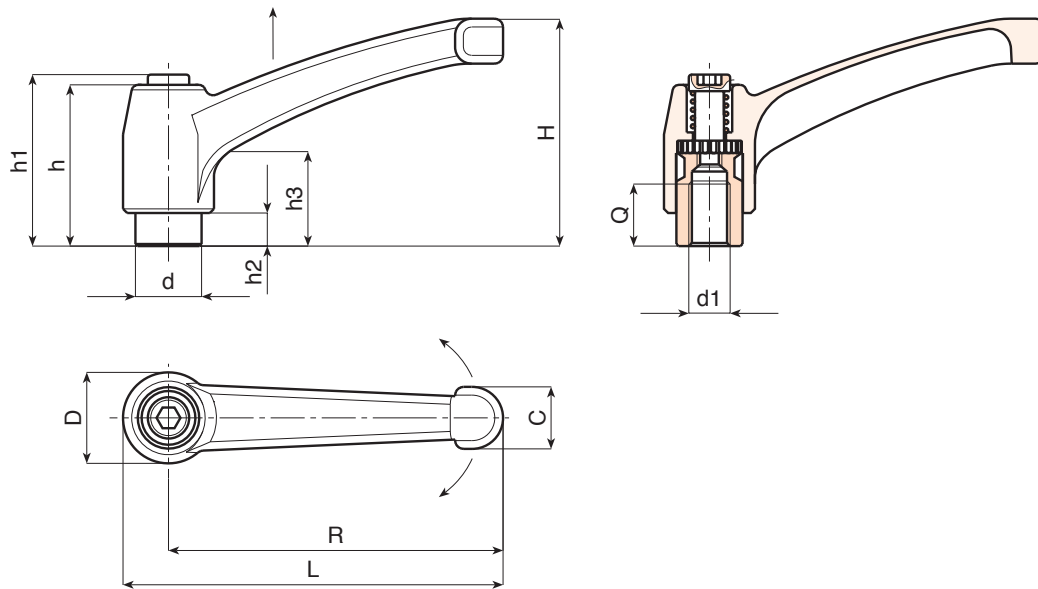
Black oxide treated steel screw with hexagon socket head.

### Spring:

Stainless steel spring (Aisi 302).

### Special requests:

- None.



🛒	Art.	L	R	H	D	d	c	h	h1	h2	h3	d16H	Q	📦
●	A592043.ZM04..	50	43	30	14	10	9	26	30	5	14	M4	7	30
●	A592043.ZM05..	50	43	30	14	10	9	26	30	5	14	M5	9	30
●	A592043.ZM06..	50	43	30	14	10	9	26	30	5	14	M6	9	28
●	A592065.ZM06..	75	65	45	19	14	13	32	34	7	14	M6	10	76
●	A592065.ZM08..	75	65	45	19	14	13	32	34	7	14	M8	10	76
●	A592065.ZM10..	75	65	45	19	14	13	32	34	7	14	M10	9	73
●	A592080.ZM08..	91	80	57	22	16	16	40	42	8	16	M8	14	134
●	A592080.ZM10..	91	80	57	22	16	16	40	42	8	16	M10	13	130
●	A592080.ZM12..	91	80	57	22	16	16	40	42	8	16	M12	12	128
●	A592094.ZM12..	107	94	65	26	20	18	47	50	10.5	19	M12	17	195
●	A592094.ZM14..	107	94	65	26	20	18	47	50	10.5	19	M14	17	190
●	A592094.ZM16..	107	94	65	26	20	18	47	50	10.5	19	M16	17	188
●	A592108.ZM14..	123	108	75	30	23	20	54	56	12	23	M14	26	298
●	A592108.ZM16..	123	108	75	30	23	20	54	56	12	23	M16	26	284
●	A592108.ZM18..	123	108	75	30	23	20	54	56	12	23	M18	25	270

In place of the two dots .. enter the selected colour code. Example: Lever R80 M10 Red - A592080.ZM1016



# A593

## INDEXED ZAMAK CLAMPING LEVER WITH THREADED STUD



### Materials:

Lever body in die-cast zamak (zinc, aluminium and copper alloy).

### Surface finish:

Smooth. Epoxy powder coating.

### Lever body colour:

Glossy black (RAL 9005 cod. 01).  
 Matt black (RAL 9005 cod. 20).  
 Orange (RAL 2004 cod. 02).  
 Red (RAL 3000 cod. 16).  
 Silver (RAL 9006 cod. 83).  
 Grey (RAL 7031 cod. 80).  
 Blue (RAL 5015 cod. 07).  
 Untreated lever (code GRE).

### Inserts:

Black-oxide treated steel insert with threaded stud (thread tolerance 6g).

### Fixing screw:

Black oxide treated steel screw with hexagon socket head.

### Spring:

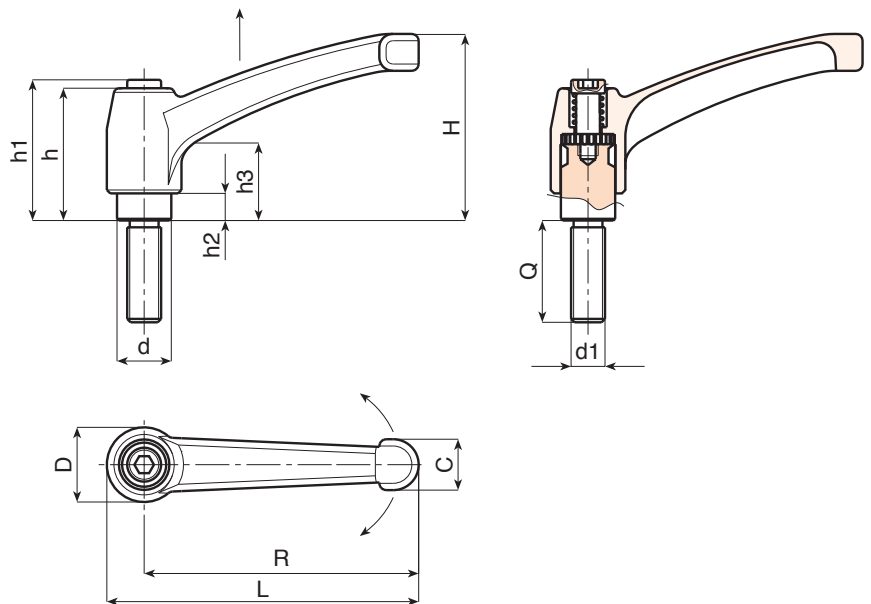
Stainless steel spring (Aisi 302).

### Special requests:

- Upon request and for a minimum of 50 pieces inserts can be supplied with customised lengths.

### Attention:

For lengths exceeding LM, the threaded stud is supplied galvanised and assembled.



Art.	L	R	H	D	d	c	h	h1	h2	h3	LM	d1 <sub>6g</sub>	Q	g
A593043.ZM04X...	50	43	30	14	10	9	26	30	5	14	50	M4	16-20-25-30	30-30-31-31
A593043.ZM05X....	50	43	30	14	10	9	26	30	5	14	50	M5	16-20-30-40	31-32-34-35
A593043.ZM06X....	50	43	30	14	10	9	26	30	5	14	60	M6	16-20-25-30-40-50	31-32-33-34-35-36
A593043.ZM08X....	50	43	30	14	10	9	26	30	5	14	60	M8	16-25-30-40-50	35-38-40-43-46
A593065.ZM06X....	75	65	45	19	14	13	32	34	7	14	60	M6	20-30-40-50	82-84-86-88
A593065.ZM08X....	75	65	45	19	14	13	32	34	7	14	60	M8	16-20-25-30-35-40-45-50	82-83-84-86-88-89-90-92
A593065.ZM10X....	75	65	45	19	14	13	32	34	7	14	60	M10	20-25-30-40-50	89-91-94-99-104
A593080.ZM08X....	91	80	57	22	16	16	40	42	8	16	60	M8	20-25-30-35-40-50	142-144-145-147-148-151
A593080.ZM10X....	91	80	57	22	16	16	40	42	8	16	60	M10	20-25-30-35-40-50-60	146-148-151-153-156-161-166
A593080.ZM12X....	91	80	57	22	16	16	40	42	8	16	70	M12	20-30-40-50-60	150-157-164-171-178
A593094.ZM12X....	107	94	65	26	20	17.5	47	50	10.5	19	70	M12	20-30-40-50	229-236-243-250
A593094.ZM14X....	107	94	65	26	20	17.5	47	50	10.5	19	70	M14	30-35-40-50-60	240-245-250-260-270
A593094.ZM16X....	107	94	65	26	20	17.5	47	50	10.5	19	80	M16	30-40-50	254-266-278
A593108.ZM12X....	123	108	75	30	23	20	54	56	12	23	80	M12	25-50	330-347
A593108.ZM14X....	123	108	75	30	23	20	54	56	12	23	80	M14	30-40-60	340-360-380
A593108.ZM16X....	123	108	75	30	23	20	54	56	12	23	80	M16	30-40-50-60	342-356-370-384
A593108.ZM18X....	123	108	75	30	23	20	54	56	12	23	80	M18	A.R.	-

In place of the four dots . . . enter the selected stud length and colour code. Example: Lever R80 M10x30 Red - A593080.ZM10x3016.

A.R. = Upon request, for a minimum of 300/600 pieces.

LM = maximum turning length.



# A592CIN



Zamak

UL94 HB



## INDEXED ZAMAK CLAMPING LEVER WITH THREADED STAINLESS STEEL INSERT

INOX

### Materials:

Lever body in die-cast zamak (zinc, aluminium and copper alloy).

### Surface finish:

Smooth. Epoxy powder coating.

### Lever body colour:

Glossy black (RAL 9005 cod. 01).  
 Matt black (RAL 9005 cod. 20).  
 Orange (RAL 2004 cod. 02).  
 Red (RAL 3000 cod. 16).  
 Silver (RAL 9006 cod. 83).  
 Grey (RAL 7031 cod. 80).  
 Blue (RAL 5015 cod. 07).  
 Untreated lever (code GRE).

### Inserts:

Stainless steel insert with female threaded hole (Aisi 303) (thread tolerance 6H).

### Fixing screw:

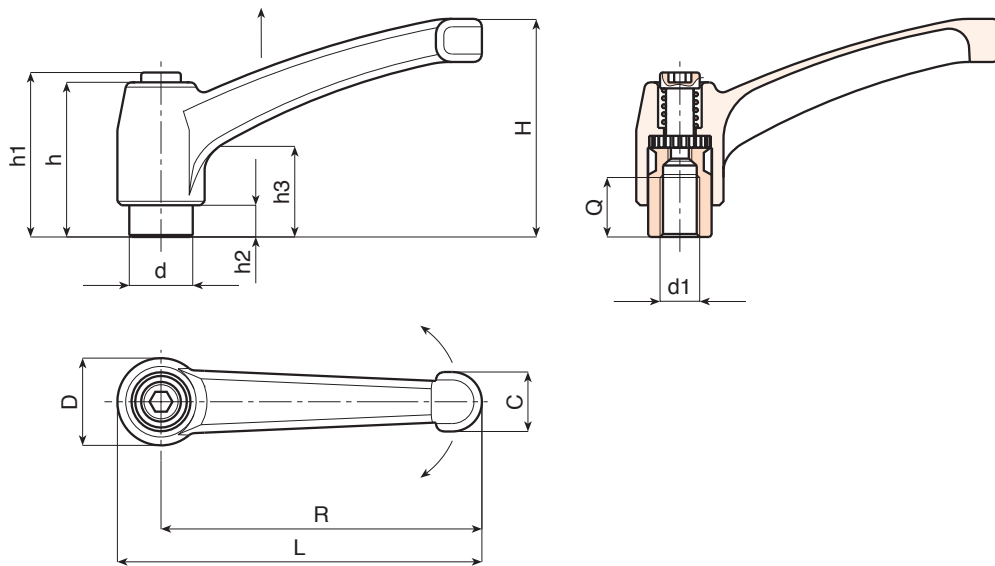
Stainless steel screw (AISI 303) with hexagon socket head.

### Spring:

Stainless steel spring (Aisi 302).

### Special requests:

- None.



INOX

Art.	L	R	H	D	d	c	h	h1	h2	h3	d16H	Q	g
A592043.ZM05..CIN	50	43	30	14	10	9	26	30	5	14	M5	9	30
A592043.ZM06..CIN	50	43	30	14	10	9	26	30	5	14	M6	9	28
A592065.ZM06..CIN	75	65	45	19	14	13	32	34	7	14	M6	10	78
A592065.ZM08..CIN	75	65	45	19	14	13	32	34	7	14	M8	10	76
A592065.ZM10..CIN	75	65	45	19	14	13	32	34	7	14	M10	10	74
A592080.ZM08..CIN	91	80	57	22	16	16	40	42	8	16	M8	14	134
A592080.ZM10..CIN	91	80	57	22	16	16	40	42	8	16	M10	13	130
A592080.ZM12..CIN	91	80	57	22	16	16	40	42	8	16	M12	12	128
A592094.ZM10..CIN	107	94	65	26	20	18	47	50	10.5	19	M10	17	191
A592094.ZM12..CIN	107	94	65	26	20	18	47	50	10.5	19	M12	17	195
A592094.ZM14..CIN	107	94	65	26	20	18	47	50	10.5	19	M14	17	190
A592108.ZM14..CIN	123	108	75	30	23	20	54	56	12	23	M14	26	298
A592108.ZM16..CIN	123	108	75	30	23	20	54	56	12	23	M16	26	284

In place of the two dots . . enter the selected colour code. Example: Lever R80 M10 Red - A592080.ZM1016CIN



Stock availability as % (🛒)  
 90% (●) - 40% (●) - 5% (●)

# A593CIN



## INDEXED ZAMAK CLAMPING LEVER WITH THREADED STAINLESS STEEL STUD

INOX

### Materials:

Lever body in die-cast zamak (zinc, aluminium and copper alloy).

### Surface finish:

Smooth. Epoxy powder coating.

### Lever body colour:

Glossy black (RAL 9005 cod. 01).  
 Matt black (RAL 9005 cod. 20).  
 Orange (RAL 2004 cod. 02).  
 Red (RAL 3000 cod. 16).  
 Silver (RAL 9006 cod. 83).  
 Grey (RAL 7031 cod. 80).  
 Blue (RAL 5015 cod. 07).  
 Untreated lever (code GRE).

### Inserts:

Stainless steel insert with threaded stud (Aisi 303) (thread tolerance 6g).

### Fixing screw:

Stainless steel screw (Aisi 304) with hexagon socket head.

### Spring:

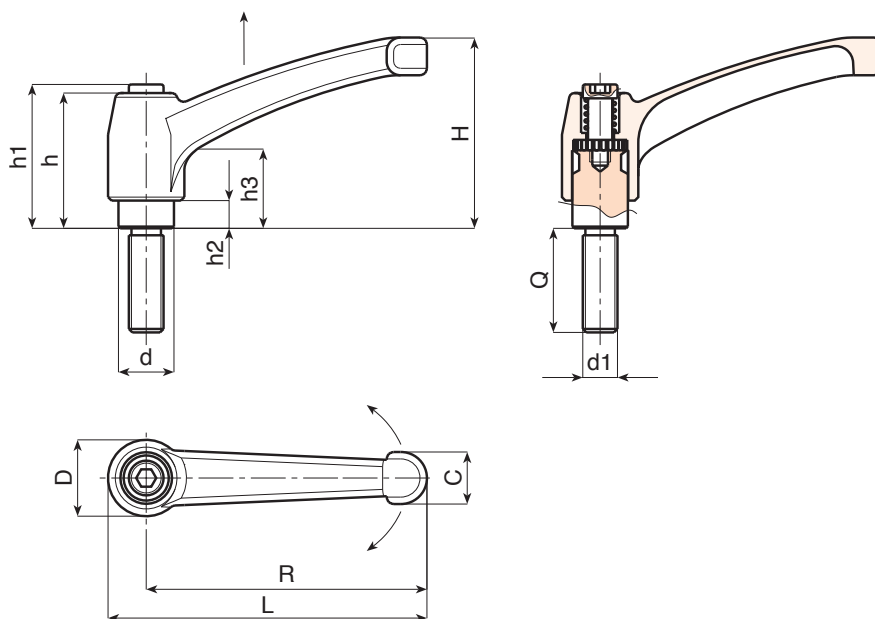
Stainless steel spring (Aisi 302).

### Special requests:

- Upon request and for a minimum of 50 pieces inserts can be supplied with customised lengths.

### Attention:

For lengths exceeding LM, the threaded stud is supplied assembled.



INOX

Art.	L	R	H	D	d	c	h	h1	h2	h3	LM	d1 <sub>6g</sub>	Q	g
A593043.ZM05X....CIN	50	43	30	14	10	9	26	30	5	14	50	M5	16-20-30	31-32-34
A593043.ZM06X....CIN	50	43	30	14	10	9	26	30	5	14	50	M6	16-20-30	31-32-34
A593043.ZM08X....CIN	50	43	30	14	10	9	26	30	5	14	60	M8	25	39
A593065.ZM08X....CIN	75	65	45	19	14	13	32	34	7	14	60	M8	16-20-30-40	82-83-86-89
A593065.ZM10X....CIN	75	65	45	19	14	13	32	34	7	14	60	M10	30-40	94-99
A593080.ZM10X....CIN	91	80	57	22	16	16	40	42	8	16	60	M10	20-30-40	146-151-156
A593080.ZM12X....CIN	91	80	57	22	16	16	40	42	8	16	60	M12	20-30-50	150-157-171
A593094.ZM12X....CIN	107	94	65	26	20	17.5	47	50	10.5	19	60	M12	20-30	229-236
A593094.ZM14X....CIN	107	94	65	26	20	17.5	47	50	10.5	19	60	M14	30-50	240-260
A593094.ZM16X....CIN	107	94	65	26	20	17.5	47	50	10.5	19	70	M16	50	278
A593108.ZM14X....CIN	123	108	75	30	23	20	54	56	12	23	70	M14	A.R.	-
A593108.ZM16X....CIN	123	108	75	30	23	20	54	56	12	23	70	M16	A.R.	-

Enter the selected stud length and colour code in place of the four dots . . . Example: Lever R80 M10x30 Red - A593080.ZM10x3016CIN.

A.R. = Upon request, for a minimum of 300/600 pieces.

LM = maximum turning length.

# A572

+135°  
-30°

PA6  
+G.F.

UL94  
HB

RoHS  
COMPLIANT

## INDEXED CLAMPING LEVER WITH 90° ARM AND THREADED INSERT

### Materials:

Special technopolymer reinforced with high-strength glass fiber.  
Resistant to oils and greases.

### Surface finish:

Satin.

### Lever body and insert colour:

Black (RAL 9011).

### Inserts:

Galvanised steel insert with female threaded hole (thread tolerance 6H).

### Fixing screw:

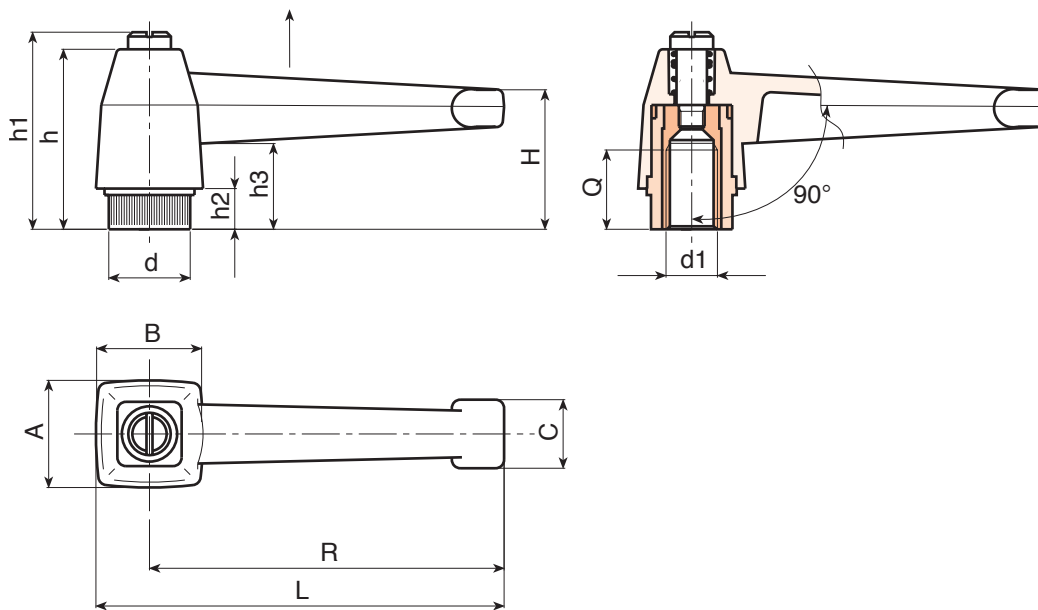
Black oxide treated steel screw with slotted head.

### Spring:

Stainless steel spring (Aisi 302).

### Special requests:

- Upon request and for special quantities inserts can be supplied in different materials.
- Upon request and for special quantities available in the colours indicated in the chart (attention: reduced range) [page 807].



Art.	L	R	H	A	B	c	h	h1	h2	h3	d16H	Q	g
A572083.TM0801	94	83	33.5	25	25	16	42	47	10	21	M8	17	52
A572083.TM1001	94	83	33.5	25	25	16	42	47	10	21	M10	17	48
A572083.TM1201	94	83	33.5	25	25	16	42	47	10	21	M12	16	48

# A573



PA6  
+G.F.

UL94  
HB



## INDEXED CLAMPING LEVER WITH 90° ARM AND THREADED STUD

### Materials:

Special technopolymer reinforced with high-strength glass fiber.  
Resistant to oils and greases.

### Surface finish:

Satin.

### Lever body and insert colour:

Black (RAL 9011).

### Inserts:

Galvanised steel threaded stud (thread tolerance 6g).

### Fixing screw:

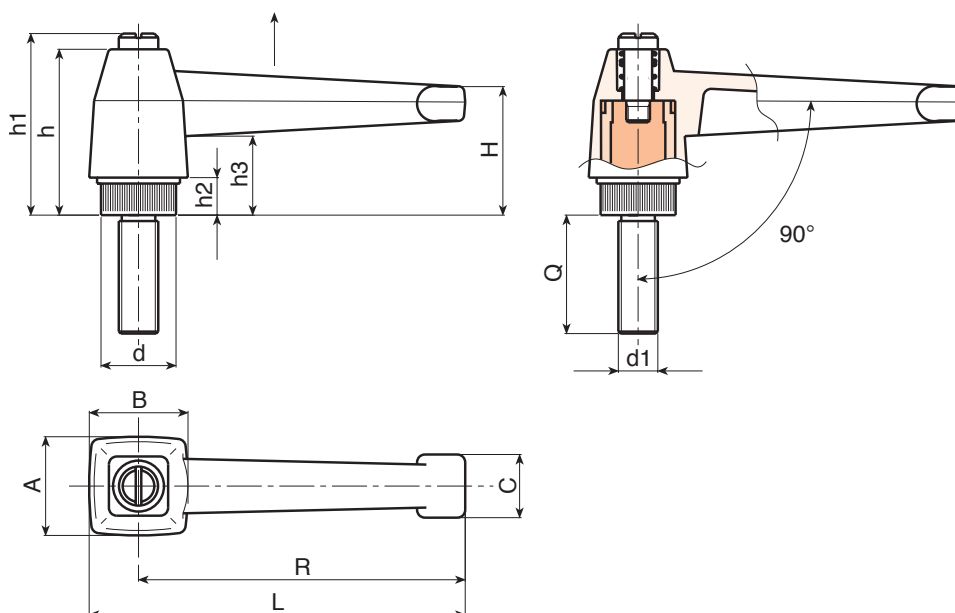
Black oxide treated steel screw with slotted head.

### Spring:

Stainless steel spring (Aisi 302).

### Special requests:

- Upon request and for special quantities inserts can be supplied with customised lengths.
- Upon request and for special quantities inserts can be supplied in different materials.
- Upon request and for special quantities available in the colours indicated in the chart (attention: reduced range) [page 807].



🛒	Art.	L	R	H	A	B	c	h	h1	h2	h3	LM	d1 <sub>6g</sub>	Q	📦
●	A573083.TM08X..01	94	83	33.5	25	25	16	42	47	10	21	90	M8	20-40	58-64
●	A573083.TM10X..01	94	83	33.5	25	25	16	42	47	10	21	90	M10	20-40	68-76
●	A573083.TM12X4001	94	83	33.5	25	25	16	42	47	10	21	90	M12	40	82

Enter the selected stud length in place of the two dots . . in the item code. Customised stud length available for a minimum of 150 pieces.

LM = Maximum mouldable length.

# A530

## "EUROMODEL" FIXED LEVER WITH THREADED INSERT



### Materials:

Special technopolymer reinforced with high-strength glass fiber.  
Resistant to oils and greases.

### Surface finish:

Satin.

### Colour:

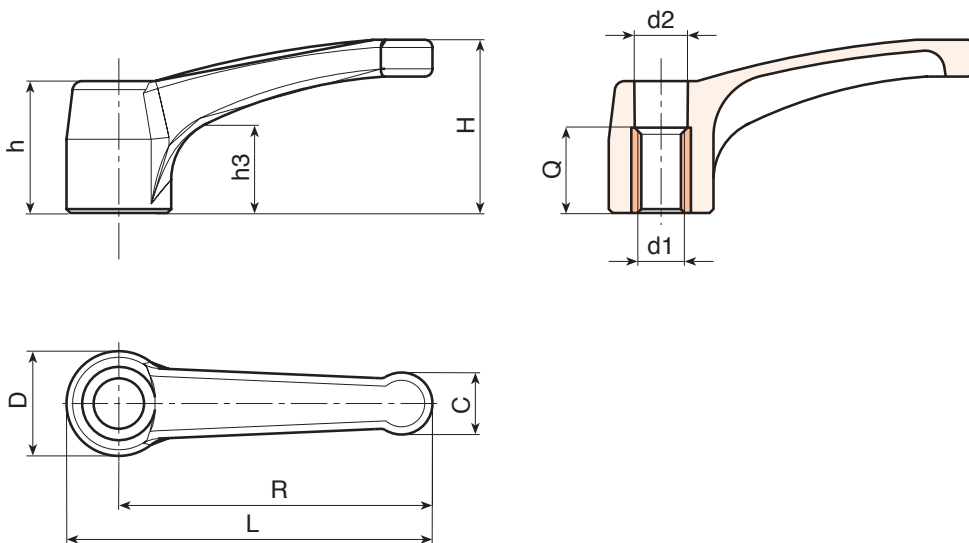
Black (RAL 9011).

### Inserts:

Brass insert with female threaded hole (thread tolerance 6H).

### Special requests:

- Upon request and for special quantities inserts can be supplied in different materials.
- Upon request and for special quantities available in the colours indicated in the chart [page 807].



Art.	L	R	H	D	c	h	h1	d2	d16H	Q	g
A530094.TM1201	109	94	48.5	30	18	35.5	49	16	M12	22	81



# A150

## "EUROMODEL" FIXED LEVER WITH THREADED INSERT



### Materials:

Special technopolymer reinforced with high-strength glass fiber.  
Resistant to oils and greases.

### Surface finish:

Satin.

### Colour:

Black (RAL 9011).

### Central cap:

Central cap in grey polyamide (RAL 7035).

### Inserts:

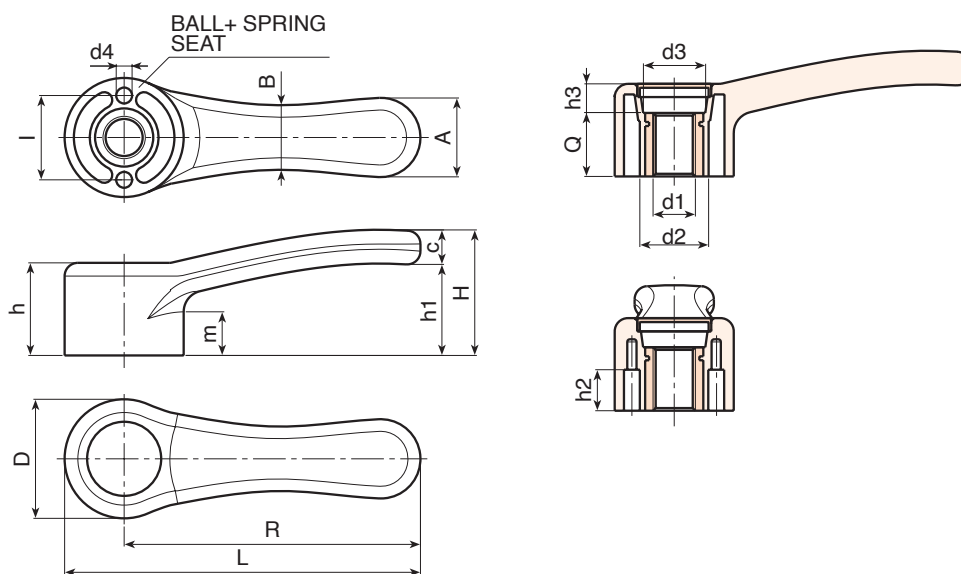
Galvanised steel insert with threaded through hole (thread tolerance 6H).

### Alternative cap colours:

Orange (RAL 2004 cod. 02).  
Blue (RAL 5015 cod. 07).  
Yellow (RAL 1021 cod. 10).  
Red (RAL 3000 cod. 16).  
Green (RAL 6024 cod. 17).  
Black (RAL 9011 cod. 01).

### Special requests:

- Upon request balls and fixing springs (galvanised steel).
- Upon request and for special quantities inserts can be supplied in different materials.
- Upon request and for special quantities inserts can be supplied with a different treatment.
- Upon request and for special quantities available in the colours indicated in the chart [page 807].



Art.	L	R	D	H	h	h1	h2	h3	m	l	A	B	c	d2	d3	d4	d16H	Q	g
A150068.TM0601	84.5	68	33	37	25	27	11.5	9	12	24	20	17	10	20	16	4	M6	16	42
A150068.TM0801	84.5	68	33	37	25	27	11.5	9	12	24	20	17	10	20	16	4	M8	16	40
A150068.TM1001	84.5	68	33	37	25	27	11.5	9	12	24	20	17	10	20	16	4	M10	16	40
A150086.TM0801	104	86	36	40	28	29	14	12	13	26	24	19	11	22	18	5	M8	16	72
A150086.TM1001	104	86	36	40	28	29	14	12	13	26	24	19	11	22	18	5	M10	16	71
A150086.TM1201	104	86	36	40	28	29	14	12	13	26	24	19	11	22	18	5	M12	16	70
A150112.TM1201	134.5	112	45	47	36	35	14.5	12	16	32	30	24	13	26	23.5	6	M12	24	99
A150112.TM1401	134.5	112	45	47	36	35	14.5	12	16	32	30	24	13	26	23.5	6	M14	24	98
A150112.TM1601	134.5	112	45	47	36	35	14.5	12	16	32	30	24	13	26	23.5	6	M16	24	95
A150142.TM1401	169.5	142	55	52	40	36	18	13	17.5	40	37	30	16	32	28	8	M14	27	240
A150142.TM1601	169.5	142	55	52	40	36	18	13	17.5	40	37	30	16	32	28	8	M16	27	235
A150142.TM1801	169.5	142	55	52	40	36	18	13	17.5	40	37	30	16	32	28	8	M18	27	230

# A151

## "EUROMODEL" FIXED LEVER WITH SMOOTH INSERT



### Materials:

Special technopolymer reinforced with high-strength glass fiber.  
Resistant to oils and greases.

### Surface finish:

Satin.

### Colour:

Black (RAL 9011).

### Central cap:

Central cap in grey polyamide (RAL 7035).

### Inserts:

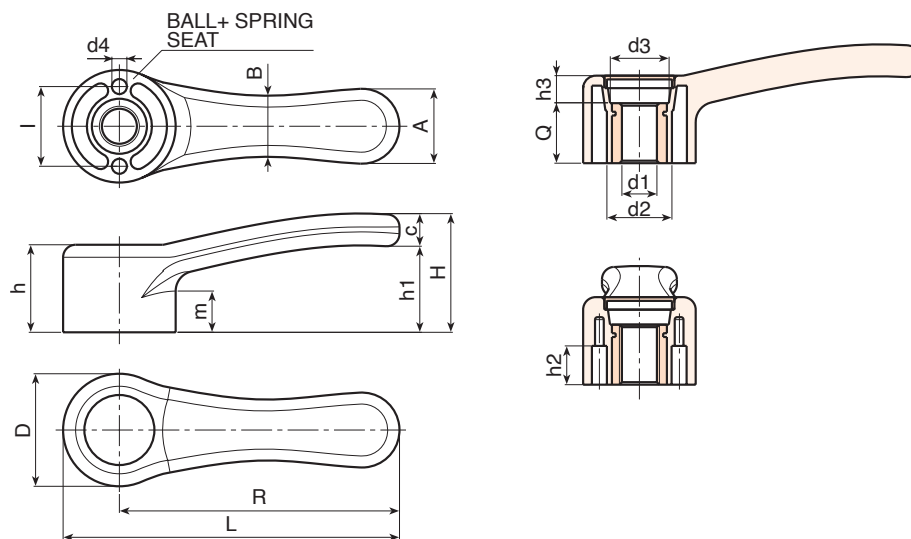
Galvanised steel insert with smooth through bore (tolerance H10).

### Alternative cap colours:

Orange (RAL 2004 cod. 02).  
Blue (RAL 5015 cod. 07).  
Yellow (RAL 1021 cod. 10).  
Red (RAL 3000 cod. 16).  
Green (RAL 6024 cod. 17).  
Black (RAL 9011 cod. 01).

### Special requests:

- Upon request balls and fixing springs (galvanised steel).
- Upon request and for special quantities inserts can be supplied with custom diameter d1.
- Upon request and for special quantities inserts can be supplied in different materials.
- Upon request and for special quantities inserts can be supplied with a different treatment.
- Upon request and for special quantities available in the colours indicated in the chart [page 807].



	Art.	L	R	D	H	h	h1	h2	h3	m	l	A	B	c	d2	d3	d4	dm	d1H10	Q	g
●	A151068.TD0501	84.5	68	33	37	25	27	11.5	9	12	24	20	17	10	20	16	4	10	5	16	45
●	A151068.TD1001	84.5	68	33	37	25	27	11.5	9	12	24	20	17	10	20	16	4	10	10	16	44
●	A151086.TD0501	104	86	36	40	28	29	14	12	13	26	24	19	11	22	18	5	12	5	16	65
●	A151086.TD0801	104	86	36	40	28	29	14	12	13	26	24	19	11	22	18	5	12	8	16	63
●	A151086.TD1001	104	86	36	40	28	29	14	12	13	26	24	19	11	22	18	5	12	10	16	61
●	A151086.TD1201	104	86	36	40	28	29	14	12	13	26	24	19	11	22	18	5	12	12	16	59
●	A151112.TD0501	134.5	112	45	47	36	35	14.5	12	16	32	30	24	13	26	23.5	6	16	5	24	128
●	A151112.TD1201	134.5	112	45	47	36	35	14.5	12	16	32	30	24	13	26	23.5	6	16	12	24	124
●	A151142.TD0501	169.5	142	55	52	40	36	18	13	17.5	40	37	30	16	32	28	8	20	5	27	250

Attention: for a minimum of 100 pieces the size d1 can be produced with the requested diameter with H10 tolerance.  
Dm = Maximum obtainable diameter for subsequent machining (widening).



# A148

## LOCKING HANDLE WITH THREADED INSERT



### Materials:

Reinforced polyamide.  
Resistant to oils and greases.

### Surface finish:

Satin.

### Colour:

Black (RAL 9011).

### Central cap:

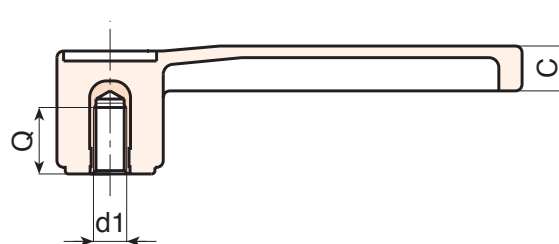
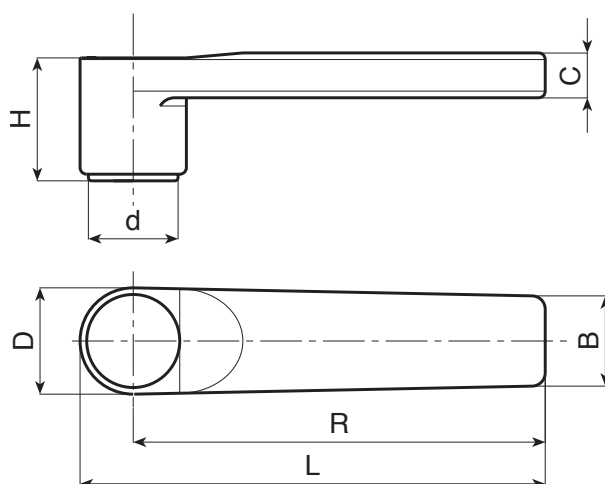
Central cap in grey polyamide (RAL 7035).

### Inserts:

Brass insert with female threaded hole (thread tolerance 6H).

### Special requests:

- Upon request and for special quantities inserts can be supplied in different materials.



🛒	Art.	L	R	H	D	c	B	h1	d	d16H	Q	📦
●	A148125.TM1001	139	125	37	31	13	26	35	27.5	M10	20	78
●	A148125.TM1201	139	125	37	31	13	26	35	27.5	M12	18	84
●	A148125.TM1401	139	125	37	31	13	26	35	27.5	M14	19	90

# A149

## LOCKING HANDLE WITH THREADED STUD



### Materials:

Reinforced polyamide.  
Resistant to oils and greases.

### Surface finish:

Satin.

### Colour:

Black (RAL 9011).

### Central cap:

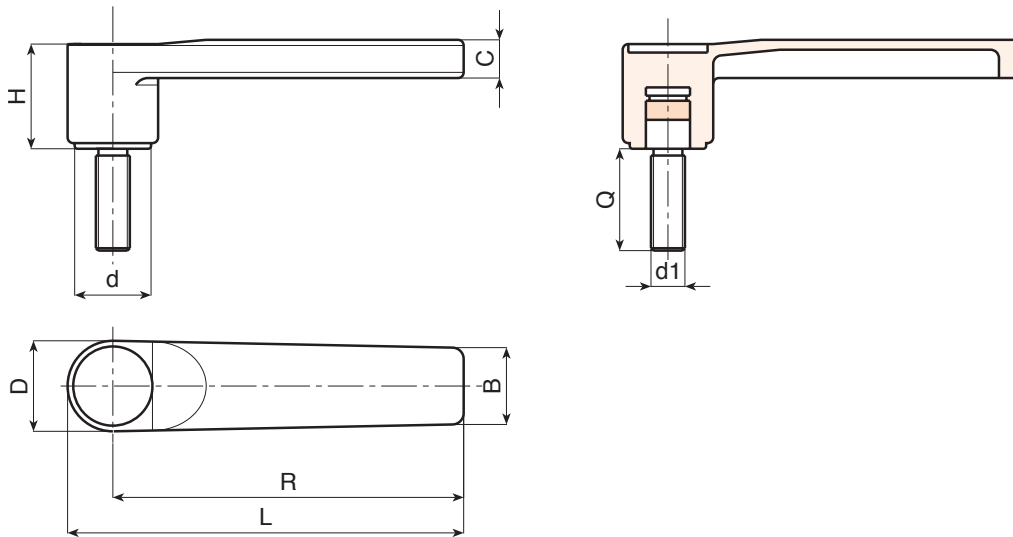
Central cap in grey polyamide (RAL 7035).

### Inserts:

Galvanised steel threaded stud (thread tolerance 6g).

### Special requests:

- Upon request and for special quantities inserts can be supplied with customised lengths.
- Upon request and for special quantities inserts can be supplied in different materials.



🛒	Art.	L	R	H	D	c	B	h1	d	LM	d1 <sub>6g</sub>	Q	📦
●	A149125.TM10X..01	139	125	37	31	13	26	35	27.5	50	M10	A.R.	-
●	A149125.TM12X3001	139	125	37	31	13	26	35	27.5	50	M12	30	113
●	A149125.TM14X..01	139	125	37	31	13	26	35	27.5	50	M14	A.R.	-

Enter the selected stud length in place of the two dots . . in the item code. Customised stud length available for a minimum of 100 pieces.

A.R. = Upon request, for a minimum of 100 pieces.

LM = Maximum mouldable length.



# A528

## FIXED LEVER WITH THREADED INSERT



### Materials:

Reinforced polyamide.  
Resistant to oils and greases.

### Surface finish:

Satin.

### Colour:

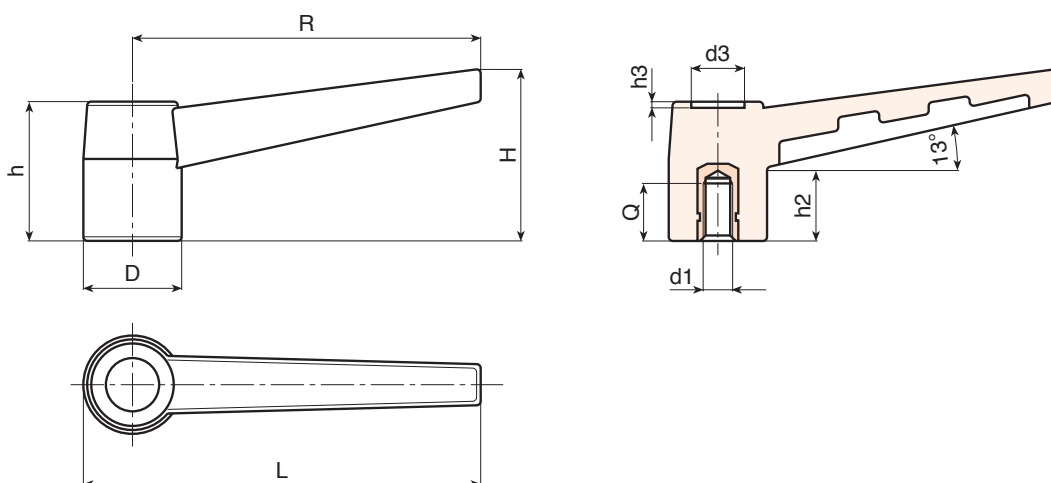
Black (RAL 9011).

### Inserts:

Brass insert with female threaded hole (thread tolerance 6H).

### Special requests:

- Upon request and for special quantities inserts can be supplied in different materials.
- Upon request and for special quantities available in the colours indicated in the chart [page 807].



🛒	Art.	L	R	H	D	h	h2	h3	d3	d16H	Q	📦
●	A52843.TM0501	50	43	21.5	15	19	9	1	7	M5	10	8
●	A52843.TM0601	50	43	21.5	15	19	9	1	7	M6	10	8
●	A52868.TM0601	78	68	36	21	28.5	11	2	10	M6	10	24
●	A52868.TM0801	78	68	36	21	28.5	11	2	10	M8	15	22
●	A52883.TM0601	93	83	40	24	34	18	2	13	M6	10	30
●	A52883.TM0801	93	83	40	24	34	18	2	13	M8	15	32
●	A52883.TM1001	93	83	40	24	34	18	2	13	M10	14	32

# A529

## FIXED LEVER WITH THREADED STUD



### Materials:

Reinforced polyamide.  
Resistant to oils and greases.

### Surface finish:

Satin.

### Colour:

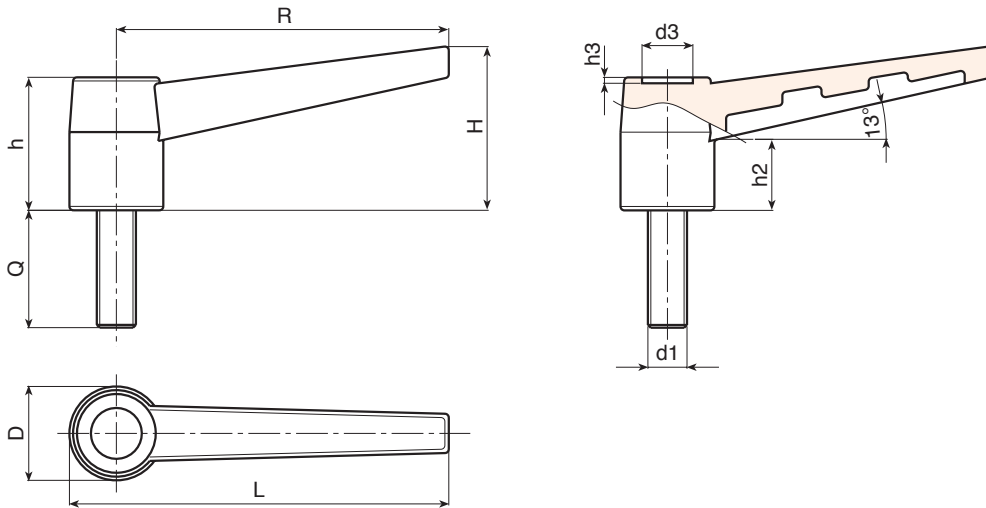
Black (RAL 9011).

### Inserts:

Galvanised steel threaded stud (thread tolerance 6g).

### Special requests:

- Upon request and for special quantities inserts can be supplied with customised lengths.
- Upon request and for special quantities inserts can be supplied in different materials.
- Upon request and for special quantities available in the colours indicated in the chart [page 807].



Art.	L	R	H	D	h	h2	h3	d3	LM	d1 <sub>6g</sub>	Q	g
A52943.TM05X..01	50	43	21.5	15	19	9	1	7	30	M5	10-20-30	9-10-11
A52943.TM06X..01	50	43	21.5	15	19	9	1	7	30	M6	10-20-30-40	10-12-14-16
A52968.TM06X..01	78	68	36	21	28.5	11	2	10	50	M6	10-20	25-27
A52968.TM08X..01	78	68	36	21	28.5	11	2	10	50	M8	16-20-30-40	30-32-36-39
A52983.TM06X..01	93	83	40	24	34	18	2	13	60	M6	A.R.	-
A52983.TM08X..01	93	83	40	24	34	18	2	13	60	M8	20-30-40-60	44-47-50-56
A52983.TM10X..01	93	83	40	24	34	18	2	13	60	M10	20-30-40	48-53-58

Enter the selected stud length in place of the two dots . in the item code. Customised stud length available for a minimum of 150 pieces.

A.R. = Upon request, for a minimum of 150 pieces.

LM = Maximum mouldable length.



Stock availability as % (🛒)  
90% (●) - 40% (●) - 5% (●)

# A524

## FIXED LEVER WITH THREADED INSERT



### Materials:

Reinforced polyamide.  
Resistant to oils and greases.

### Surface finish:

Satin.

### Colour:

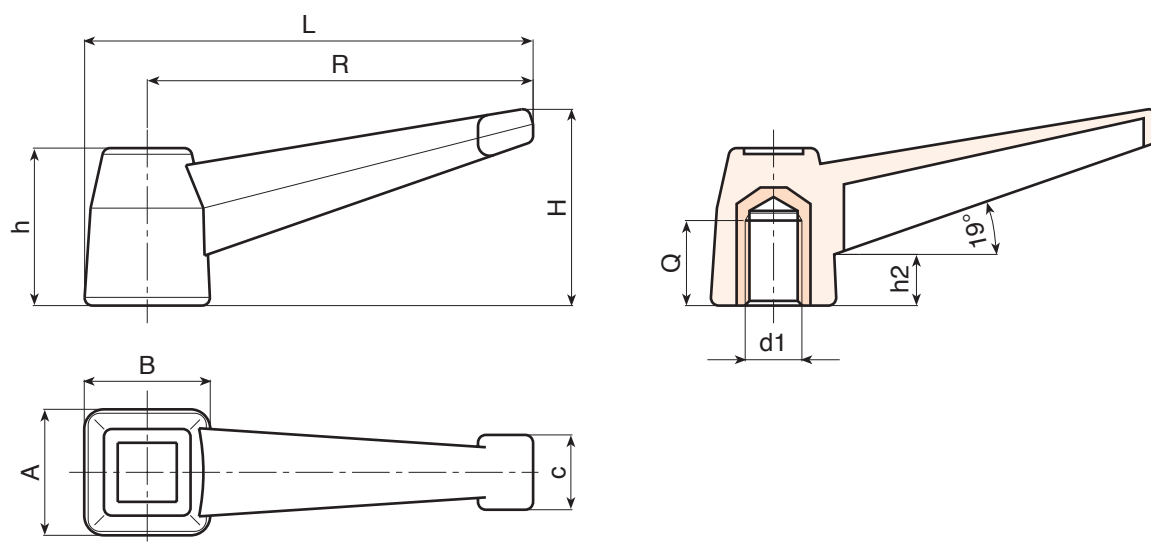
Black (RAL 9011).

### Inserts:

Brass insert with female threaded hole (thread tolerance 6H).  
(\* Galvanised steel insert with female threaded hole (thread tolerance 6H).

### Special requests:

- Upon request and for special quantities inserts can be supplied in different materials.



🛒	Art.	L	R	H	A	B	c	h	h2	d16H	Q	g
●	A52498.TM1001	112	96	51	32	32	19	40	12	M12	19	64
●	A52498.TM1201	112	96	51	32	32	19	40	12	M14	19	68
●	A52498.TM1401	112	96	51	32	32	19	40	12	(*M16	16	80

# A525

## FIXED LEVER WITH THREADED STUD



### Materials:

Reinforced polyamide.  
Resistant to oils and greases.

### Surface finish:

Satin.

### Colour:

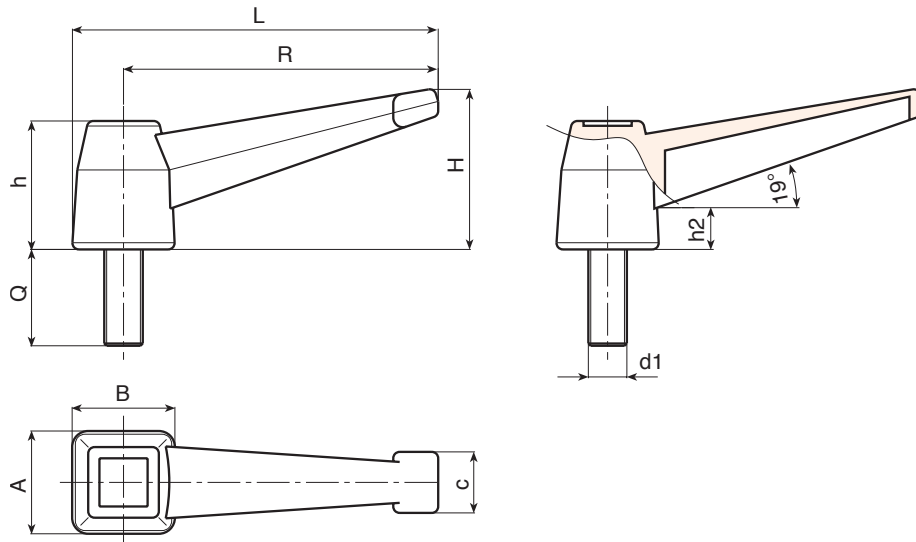
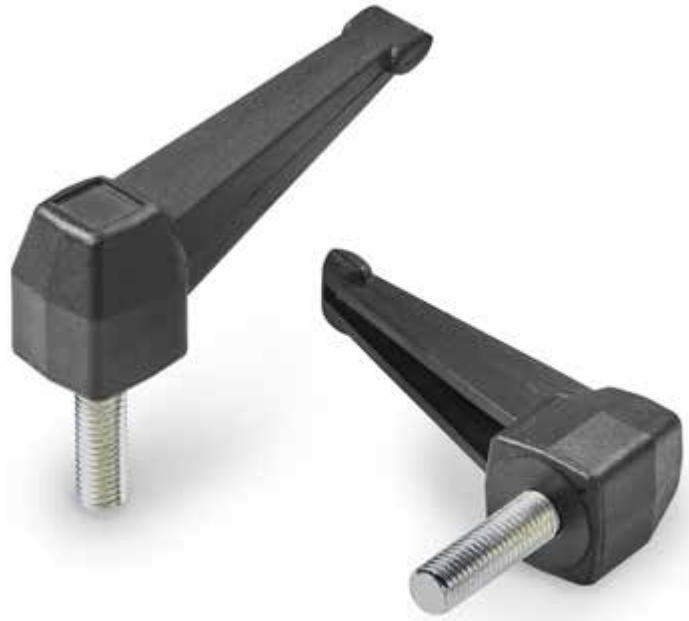
Black (RAL 9011).

### Inserts:

Galvanised steel threaded stud (thread tolerance 6g).

### Special requests:

- Upon request and for special quantities inserts can be supplied with customised lengths.
- Upon request and for special quantities inserts can be supplied in different materials.



Art.	L	R	H	A	B	c	h	h2	LM	d1 <sub>6g</sub>	Q	g
● A52598.TM10X4001	112	96	51	32	32	19	40	12	100	M10	40	90
● A52598.TM12X4001	112	96	51	32	32	19	40	12	100	M12	40	104
● A52598.TM14X..01	112	96	51	32	32	19	40	12	100	M14	A.R.	-
● A52598.TM16X4001	112	96	51	32	32	19	40	12	100	M16	40	164

Enter the selected stud length in place of the two dots . . in the item code. Customised stud length available for a minimum of 150 pieces.

A.R. = Upon request, for a minimum of 150 pieces.

LM = Maximum mouldable length.



Stock availability as % (🛒)  
90% (●) - 40% (●) - 5% (●)