



BOTECO®

YOUR MECHANICAL COMPONENT

GROUP - C

SOLID CONTROL HANDWHEELS





THE RIGHT
RHYTHM?
THE RHYTHM
SUCCESS.



BOTECO[®]

C196

SOLID CONTROL HANDWHEEL



Materials:

Reinforced and stabilized polyamide.
Resistant to oils and greases.

Surface finish:

Satin.

Colour:

Black (RAL 9011).

Central cap:

Grey polyamide (RAL 7035 code 13).

Alternative cap colours:

Orange (RAL 2004 cod. 02).
Blue (RAL 5015 cod. 07).
Yellow (RAL 1021 cod. 10).
Red (RAL 3000 cod. 16).
Green (RAL 6024 cod. 17).
Black (RAL 9011 cod. 01).

Main insert:

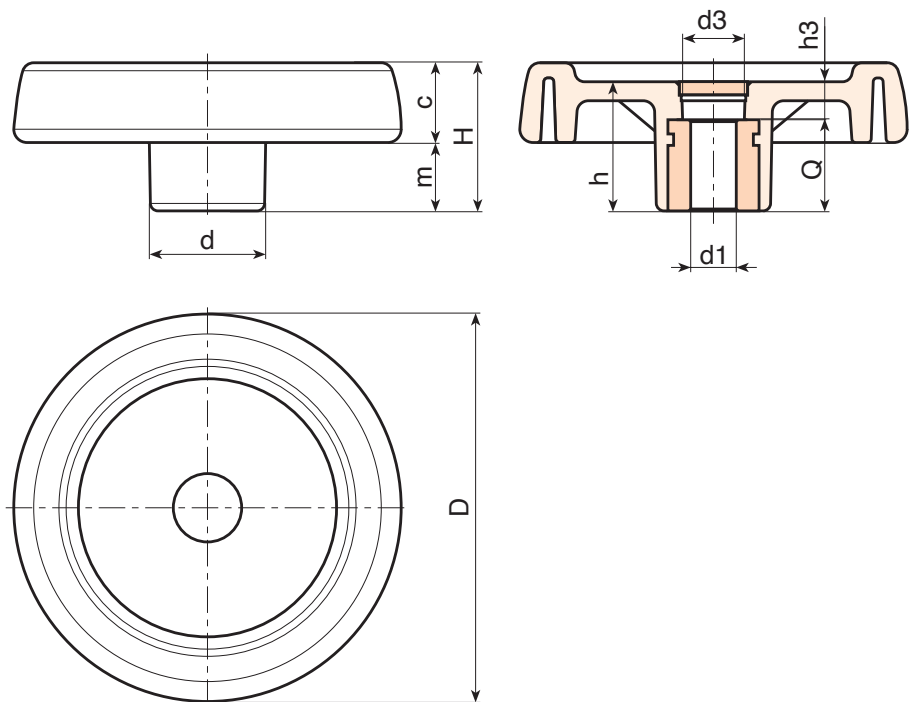
Galvanised steel insert with smooth through bore (tolerance H10).

Fixing method:

For fixing systems, or execution of keyways or square holes, please refer to the technical notes attached to the catalogue [page 814].

Special requests:

- On request and with a minimum of 50 pieces, the inserts can be supplied with the hole d1 with H7 tolerance and black-oxide finish. Add the letters ZB to the standard code. Example: C196100.TD1001PZB.
- Upon request and for special quantities inserts can be supplied with custom hole diameter d1.
- Upon request and for special quantities inserts can be supplied in different materials/with different coatings.
- Upon request and for special quantities handwheels and caps are available in the colours indicated in the chart (attention: reduced range) [page 807].



🛒	Art.	D	H	h	d	m	c	d3	h3	Dm	d1 _{H10}	Q	g
●	C196080.TP0501P	81	33	29	25	16	17	16	9	12	5	20	100
●	C196080.TD0801P	81	33	29	25	16	17	16	9	12	8	20	99
●	C196080.TD1001P	81	33	29	25	16	17	16	9	12	10	20	99
●	C196080.TD1201P	81	33	29	25	16	17	16	9	12	12	20	98
●	C196100.TP0501P	100	39	34	30	18.5	20.5	16	10	16	5	24	192
●	C196125.TP0501P	125	44	37	36	20	24	26	13	18	5	24	295
●	C196125.TD1201P	125	44	37	36	20	24	26	13	18	12	24	290
●	C196150.TD0801P	150	54	44	38	25	29	26	12	22	8	32	520
●	C196150.TD1401P	150	54	44	38	25	29	26	12	22	14	32	515
●	C196175.TD0801P	173	57	47	40	25.5	31.5	26	15	22	8	32	660
●	C196200.TD0801P	202	59	49	44	24	35	27	13	28	8	36	870
●	C196250.TD0801P	249	68	58	59	29	39	36	22	28	8	36	1420

Attention: For a minimum of 50 pieces the diameter d1 can be customised (hole tolerance H10 galvanised and H7 black-oxide treated).
Dm = Maximum obtainable diameter for subsequent machining (widening).



Stock availability as % (🛒)
90% (●) - 40% (●) - 5% (●)

C197

SOLID CONTROL HANDWHEEL WITH REVOLVING HANDLE



Materials:

Reinforced and stabilized polyamide.
Resistant to oils and greases.

Surface finish:

Satin.

Colour:

Black (RAL 9011).

Central cap:

Grey polyamide (RAL 7035 code 13).

Alternative cap colours:

Orange (RAL 2004 cod. 02).
Blue (RAL 5015 cod. 07).
Yellow (RAL 1021 cod. 10).
Red (RAL 3000 cod. 16).
Green (RAL 6024 cod. 17).
Black (RAL 9011 cod. 01).

Main insert:

Galvanised steel insert with smooth through bore (tolerance H10).

Lateral insert:

Brass insert with threaded through hole.

Lateral handle:

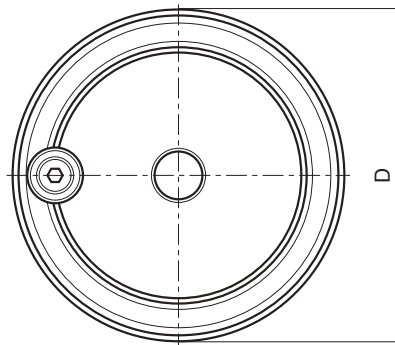
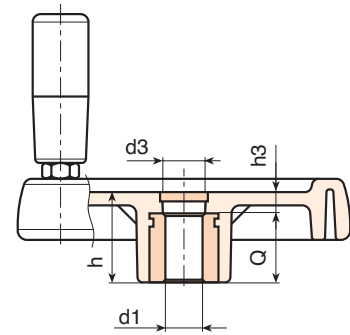
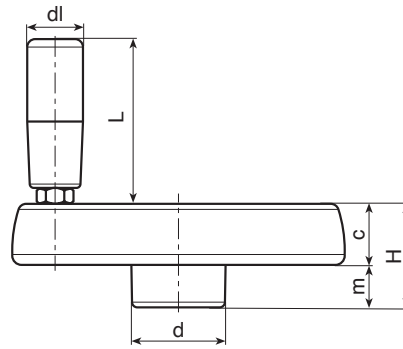
C197: Revolving handle art. M144 (page 400).
C193: Revolving handle art. M145 (page 404).
C194: Revolving handle art. M129 (page 401).
C195: Revolving handle art. M202 (page 408).

Fixing method:

For fixing systems, or execution of keyways or square holes, please refer to the technical notes attached to the catalogue [page 814].

Special requests:

- On request and with a minimum of 50 pieces, the inserts can be supplied with the hole $d1$ with H7 tolerance and black-oxide finish. Add the letters ZB to the standard code. Example: C197100.TD1001PZB.
- Upon request and for special quantities inserts can be supplied with custom hole diameter $d1$.
- Upon request and for special quantities inserts can be supplied in different materials/with different coatings.
- Upon request and for special quantities handwheels, handles and caps are available in the colours indicated in the chart (reduced range) [page 807].



Art.	D	H	h	d	m	c	d3	h3	Dm	d1 _{H10}	Q	g
C197080.TP0501P	81	33	29	25	16	17	16	9	12	5	20	130
C197080.TD0801P	81	33	29	25	16	17	16	9	12	8	20	129
C197100.TP0501P	100	39	34	30	18.5	20.5	16	10	16	5	24	192
C197100.TD1001P	100	39	34	30	18.5	20.5	16	10	16	10	24	190
C197125.TP0501P	125	44	37	36	20	24	26	13	18	5	24	351
C197125.TD1201P	125	44	37	36	20	24	26	13	18	12	24	340
C197150.TD0801P	150	54	44	38	25	29	26	12	22	8	32	588
C197150.TD1201P	150	54	44	38	25	29	26	12	22	12	32	580
C197150.TD1401P	150	54	44	38	25	29	26	12	22	14	32	577
C197175.TD0801P	173	57	47	40	25.5	31.5	26	15	22	8	32	770
C197175.TD1601P	173	57	47	40	25.5	31.5	26	15	22	16	32	755
C197175.TD2001P	173	57	47	40	25.5	31.5	26	15	22	20	32	751
C197200.TD0801P	202	59	49	44	24	35	27	13	28	8	36	980
C197200.TD2001P	202	59	49	44	24	35	27	13	28	20	36	960
C197250.TD0801P	249	68	58	59	29	39	36	22	28	8	36	1530

Attention: For a minimum of 50 pieces the diameter $d1$ can be customised (hole tolerance H10 galvanised and H7 black-oxide treated).
Dm = Maximum obtainable diameter for subsequent machining (widening).



Stock availability as % (🛒)
90% (●) - 40% (●) - 5% (●)

C193



SOLID CONTROL HANDWHEEL WITH REVOLVING HANDLE M145

Art.	D	H	h	dl	L	Dm	d1 _{H10}	Q	g
C193080.TP0501P	81	33	29	20	55	12	5	20	135
C193100.TP0501P	100	39	34	20	55	16	5	24	220
C193125.TP0501P	125	44	37	23	66	18	5	24	370
C193150.TD0801P	150	54	44	25	76	22	8	32	594
C193175.TD0801P	173	57	47	25	87	22	8	32	750
C193200.TD0801P	202	59	49	27	96	28	8	36	965
C193250.TD0801P	249	68	58	27	96	28	8	36	1500

Attention: For a minimum of 50 pieces the diameter d1 can be customised (hole tolerance H10 galvanised and H7 black-oxide treated).
Dm = Maximum obtainable diameter for subsequent machining (widening).

Lateral handle:

C193: Revolving handle art. M145 (page 404).

C194



SOLID CONTROL HANDWHEEL WITH REVOLVING HANDLE M129

Art.	D	H	h	dl	L	Dm	d1 _{H10}	Q	g
C194080.TP0501P	81	33	29	20	52	12	5	20	145
C194100.TP0501P	100	39	34	20	52	16	5	24	235
C194125.TP0501P	125	44	37	23	62	18	5	24	350
C194150.TD0801P	150	54	44	25	72	22	8	32	610
C194175.TD0801P	173	57	47	25	81	22	8	32	755
C194200.TD0801P	202	59	49	27	93	28	8	36	975
C194250.TD0801P	249	68	58	27	93	28	8	36	1520

Attention: For a minimum of 50 pieces the diameter d1 can be customised (hole tolerance H10 galvanised and H7 black-oxide treated).
Dm = Maximum obtainable diameter for subsequent machining (widening).

Lateral handle:

C194: Revolving handle art. M129 (page 401).

C195



SOLID CONTROL HANDWHEEL WITH REVOLVING HANDLE M202

Art.	D	H	h	dl	L	Dm	d1 _{H10}	Q	g
C195150.TD0801P	150	54	44	40	64	22	8	32	610
C195175.TD0801P	173	57	47	40	64	22	8	32	750
C195200.TD0801P	202	59	49	40	64	28	8	36	960
C195250.TD0801P	249	68	58	40	64	28	8	36	1490

Attention: For a minimum of 50 pieces the diameter d1 can be customised (hole tolerance H10 galvanised and H7 black-oxide treated).
Dm = Maximum obtainable diameter for subsequent machining (widening).

Lateral handle:

C195: Revolving handle art. M202 (page 408).

CBASE



BASE FOR SOLID CONTROL HANDWHEEL WITH PROVISION FOR SIDE HANDLE

Art.	D	H	h	d	m	c	d3	h3	d1 _{H10}	g	Hole
C080.TP0501PZ1	81	33	29	25	16	17	16	9	5	100	M6
C100.TP0501PZ1	100	39	34	30	18.5	20.5	16	10	5	190	M6
C125.TP0501PZ1	125	44	37	36	20	24	26	13	5	290	M8
C150.TD0801PZ1	150	54	44	38	25	29	26	12	8	520	M10
C175.TD0801PZ1	173	57	47	40	25.5	31.5	26	15	8	660	M10
C200.TD0801PZ1	202	59	49	44	24	35	27	13	8	870	M10
C250.TD0801PZ1	249	68	58	59	29	39	36	22	8	1400	M10

C199C



SOLID CONTROL HANDWHEEL WITH CENTRAL FOLDAWAY REVOLVING HANDLE

Materials:

Reinforced and stabilized polyamide. Resistant to oils and greases.

Surface finish:

Satin.

Colour:

Black (RAL 9011).

Central cap:

Grey polyamide (RAL 7035 code 13).

Alternative cap colours:

Orange (RAL 2004 cod. 02).

Blue (RAL 5015 cod. 07).

Yellow (RAL 1021 cod. 10).

Red (RAL 3000 cod. 16).

Green (RAL 6024 cod. 17).

Black (RAL 9011 cod. 01).

Main insert:

Galvanised steel insert with smooth through bore (tolerance H10).

Lateral handle:

Revolving handle that folds into the handwheel, with hexagonal connection.

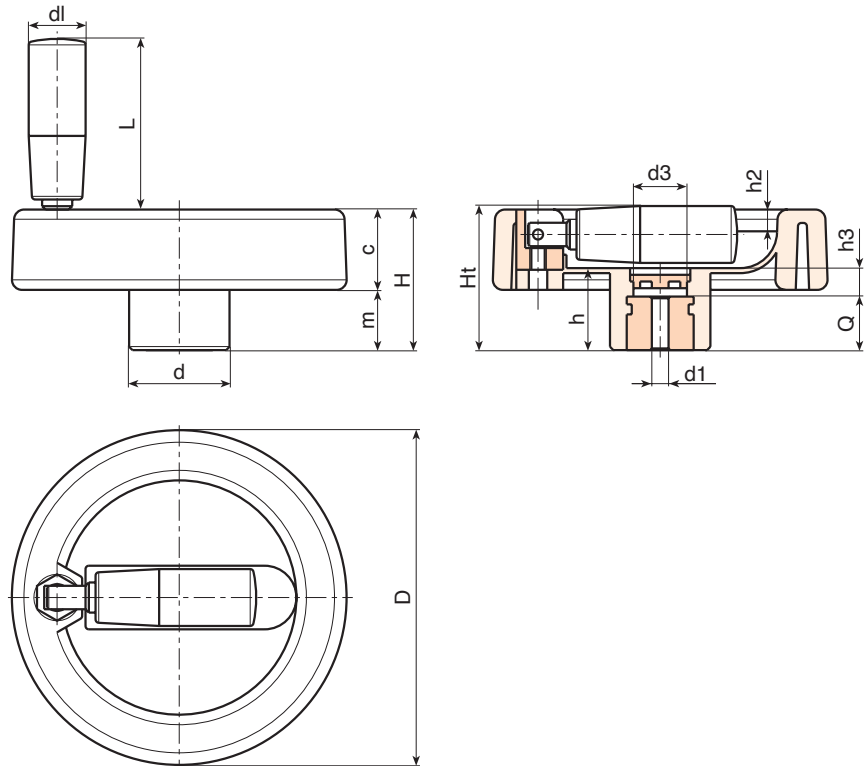
Reinforced polyamide handle. Black-oxide treated internal mechanism. Fixed with black-oxide treated hexagon socket button head screw ISO 7838.

Fixing method:

For fixing systems, or execution of keyways or square holes, please refer to the technical notes attached to the catalogue [page 814].

Special requests:

- On request and with a minimum of 50 pieces, the inserts can be supplied with the hole d1 with H7 tolerance and black-oxide finish. Add the letters ZB to the standard code. Example: C199100.ZB.TD1001PZB.
- Upon request and for special quantities inserts can be supplied with custom hole diameter d1.
- Upon request and for special quantities inserts can be supplied in different materials/with different coatings.
- Upon request and for special quantities handwheels, handles and caps are available in the colours indicated in the chart (attention: reduced range) [page 807].



Art.	D	H	Ht	h	d	m	c	d3	h3	h2	d1	L	Dm	d1 _{H10}	Q	g
C199080.TP0501P	80	33	35	19	25	15	18	15	6	4	16	38	12	5	13	113
C199080.TD1001P	80	33	35	19	25	15	18	15	6	4	16	38	12	10	13	110
C199100.TP0501P	100	42	43.5	24	30	18	24	17	8	6.5	17	48	16	5	16	240
C199100.TD1001P	100	42	43.5	24	30	18	24	17	8	6.5	17	48	16	10	16	237

Attention: For a minimum of 50 pieces the diameter d1 can be customised (hole tolerance H10 galvanised and H7 black-oxide treated). Dm = Maximum obtainable diameter for subsequent machining (widening).



Stock availability as % (🛒)
90% (●) - 40% (●) - 5% (●)

C199



SOLID CONTROL HANDWHEEL WITH FOLDAWAY REVOLVING HANDLE

Materials:

Reinforced and stabilized polyamide. Resistant to oils and greases.

Surface finish:

Satin.

Colour:

Black (RAL 9011).

Central cap:

Grey polyamide (RAL 7035 code 13).

Alternative cap colours:

Orange (RAL 2004 cod. 02).
 Blue (RAL 5015 cod. 07).
 Yellow (RAL 1021 cod. 10).
 Red (RAL 3000 cod. 16).
 Green (RAL 6024 cod. 17).
 Black (RAL 9011 cod. 01).

Main insert:

Galvanised steel insert with smooth through bore (tolerance H10).

Lateral handle:

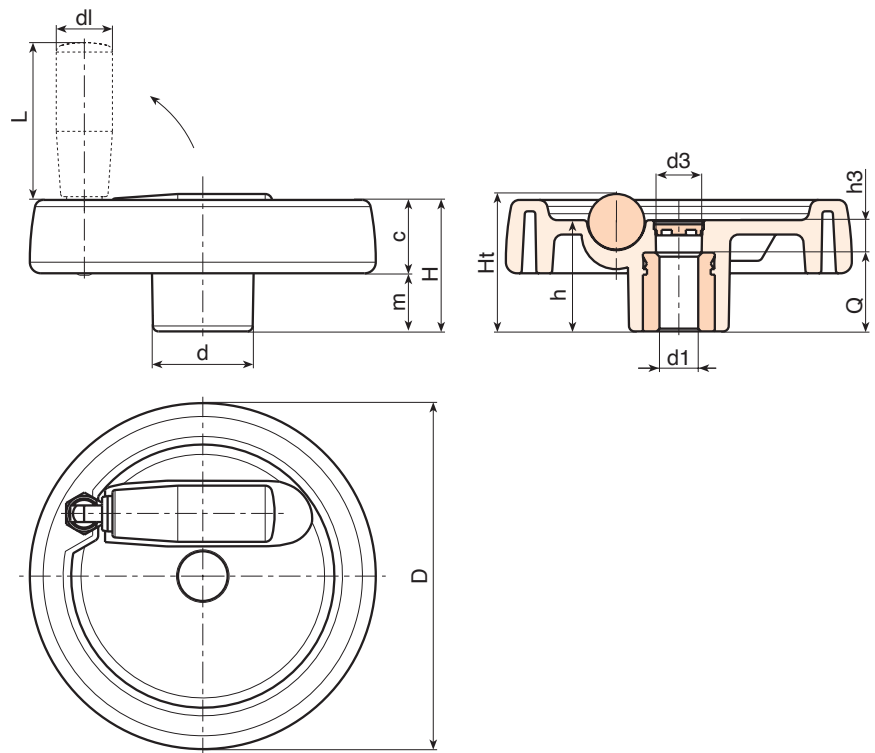
Revolving handle that folds into the handwheel, with hexagonal connection.
 Reinforced polyamide handle. Black-oxide treated internal mechanism. Fixed with black-oxide treated hexagon socket button head screw ISO 7838.

Fixing method:

For fixing systems, or execution of keyways or square holes, please refer to the technical notes attached to the catalogue [page 814].

Special requests:

- On request and with a minimum of 50 pieces, the inserts can be supplied with the hole $d1$ with H7 tolerance and black-oxide finish. Add the letters ZB to the standard code. Example: C199125.TD1001PZB.
- Upon request and for special quantities inserts can be supplied with custom hole diameter $d1$.
- Upon request and for special quantities inserts can be supplied in different materials/with different coatings.
- Upon request and for special quantities handwheels, handles and caps are available in the colours indicated in the chart (attention: reduced range) [page 807].



Art.	D	H	Ht	h	d	m	c	d3	h3	d1	L	Dm	d1 _{H10}	Q	g
C199125.TP0501P	124	48	49.5	40	36	21.5	26.5	15	16	20	38	18	5	24	349
C199125.TD1201P	124	48	49.5	40	36	21.5	26.5	15	16	20	38	18	12	24	343
C199150.TD0801P	149	53	-	44	38	24.5	28.5	26	12	20	58	22	8	32	500
C199150.TD1401P	149	53	-	44	38	24.5	28.5	26	12	20	58	22	14	32	493
C199150.TD2001P	149	53	-	44	38	24.5	28.5	26	12	20	58	22	20	32	488
C199175.TD0801P	174	58	-	48	40	24.5	33.5	26	16	26	80	28	8	32	715
C199175.TD1601P	174	58	-	48	40	24.5	33.5	26	16	26	80	28	16	32	707
C199200.TD0801P	198	63	-	53	44	24.5	38.5	26	17	27	90	28	8	36	1015
C199250.TD0801P	250	67	-	58	60	29	38	36	22	27	90	28	8	36	1500

Attention: For a minimum of 50 pieces the diameter $d1$ can be customised (hole tolerance H10 galvanised and H7 black-oxide treated).
 Dm = Maximum obtainable diameter for subsequent machining (widening).



Stock availability as % (🛒)
 90% (●) - 40% (●) - 5% (●)

C198



SOLID CONTROL HANDWHEEL WITH REVOLVING FOLDING HANDLE

Materials:

Reinforced and stabilized polyamide.
Resistant to oils and greases.

Surface finish: Satin.

Colour: Black (RAL 9011).

Central cap:

Grey polyamide (RAL 7035 code 13).

Alternative cap colours:

Orange (RAL 2004 cod. 02).
Blue (RAL 5015 cod. 07).
Yellow (RAL 1021 cod. 10).
Red (RAL 3000 cod. 16).
Green (RAL 6024 cod. 17).
Black (RAL 9011 cod. 01).

Main insert:

Galvanised steel insert with smooth through bore (tolerance H10).

Lateral insert:

Brass insert with threaded through hole.

Lateral handle:

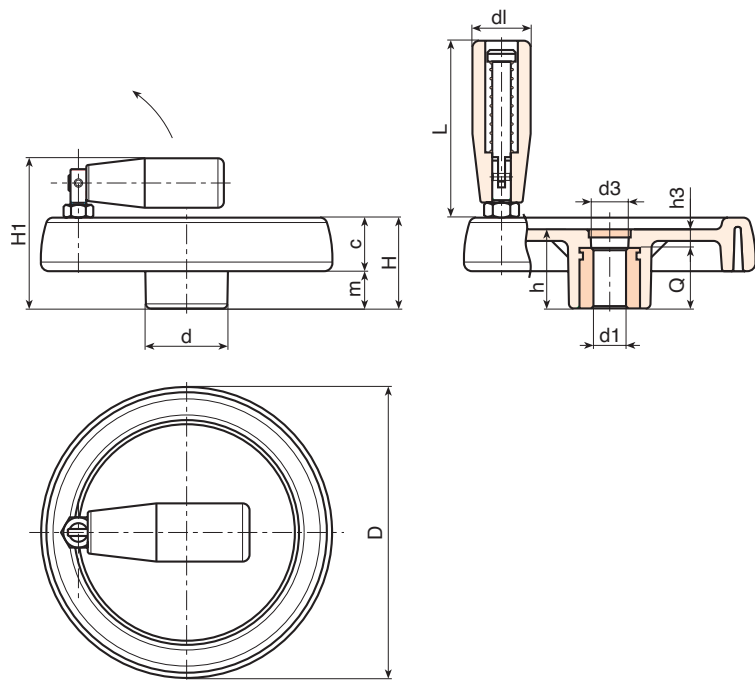
Revolving, folding handle art. M136 [page 405].

Fixing method:

For fixing systems, or execution of keyways or square holes, please refer to the technical notes attached to the catalogue [page 814].

Special requests:

- On request and with a minimum of 50 pieces, the inserts can be supplied with the hole d1 with H7 tolerance and black-oxide finish. Add the letters ZB to the standard code. Example: C198100.TD1001PZB.
- Upon request and for special quantities inserts can be supplied with custom hole diameter d1.
- Upon request and for special quantities inserts can be supplied in different materials/with different coatings.
- Upon request and for special quantities handwheels, handles and caps are available in the colours indicated in the chart (attention: reduced range) [page 807].



Art.	D	H	H1	h	d	m	c	d3	h3	d1	L	Dm	d1 H10	Q	g
C198080.TP0501P	81	33	57	29	25	16	17	16	9	20	56	12	5	20	145
C198080.TD0801P	81	33	57	29	25	16	17	16	9	20	56	12	8	20	144
C198080.TD1001P	81	33	57	29	25	16	17	16	9	20	56	12	10	20	143
C198080.TD1201P	81	33	57	29	25	16	17	16	9	20	56	12	12	20	143
C198100.TP0501P	100	39	63	34	30	18.5	20.5	16	10	20	56	16	5	24	235
C198100.TD1001P	100	39	63	34	30	18.5	20.5	16	10	20	56	16	10	24	233
C198100.TD1201P	100	39	63	34	30	18.5	20.5	16	10	20	56	16	12	24	232
C198125.TP0501P	125	44	74	37	36	20	24	26	13	25	76	18	5	24	360
C198125.TD0801P	125	44	74	37	36	20	24	26	13	25	76	18	8	24	358
C198125.TD1201P	125	44	74	37	36	20	24	26	13	25	76	18	12	24	355
C198125.TD1401P	125	44	74	37	36	20	24	26	13	25	76	18	14	24	353
C198125.TD1501P	125	44	74	37	36	20	24	26	13	25	76	18	15	24	352
C198150.TD0801P	150	54	89	44	38	25	29	26	12	26	89	22	8	32	670
C198150.TD1201P	150	54	89	44	38	25	29	26	12	26	89	22	12	32	665
C198150.TD1401P	150	54	89	44	38	25	29	26	12	26	89	22	14	32	663
C198150.TD1801P	150	54	89	44	38	25	29	26	12	26	89	22	18	32	655
C198175.TD0801P	173	57	92	47	40	25.5	31.5	26	15	26	97	22	8	32	810
C198175.TD1601P	173	57	92	47	40	25.5	31.5	26	15	26	97	22	16	32	800
C198175.TD2001P	173	57	92	47	40	25.5	31.5	26	15	26	97	22	20	32	797
C198200.TD0801P	202	59	94	49	44	24	35	27	13	26	97	28	8	36	1030
C198200.TD1401P	202	59	94	49	44	24	35	27	13	26	97	28	14	36	1020
C198200.TD1801P	202	59	94	49	44	24	35	27	13	26	97	28	18	36	1018
C198200.TD2001P	202	59	94	49	44	24	35	27	13	26	97	28	20	36	1015
C198250.TD0801P	249	68	100	58	59	29	39	36	22	26	97	28	8	36	1580

Attention: For a minimum of 50 pieces the diameter d1 can be customised (hole tolerance H10 galvanised and H7 black-oxide treated).
Dm = Maximum obtainable diameter for subsequent machining (widening).



C970



SOLID CONTROL HANDWHEEL WITH REVOLVING HANDLE AND LOCKING KNOB

Materials:

Reinforced and stabilized polyamide. Resistant to oils and greases.

Surface finish:

Satin.

Handwheel and handle colour:

Black (RAL 9011).

Central cap:

Grey polyamide (RAL 7035 code 13).

Main insert:

Galvanised steel insert with smooth through bore (tolerance H10).

Lateral insert:

Brass insert with threaded through hole.

Lateral handle:

Revolving handle art. M144 [page 400].

Locking knob:

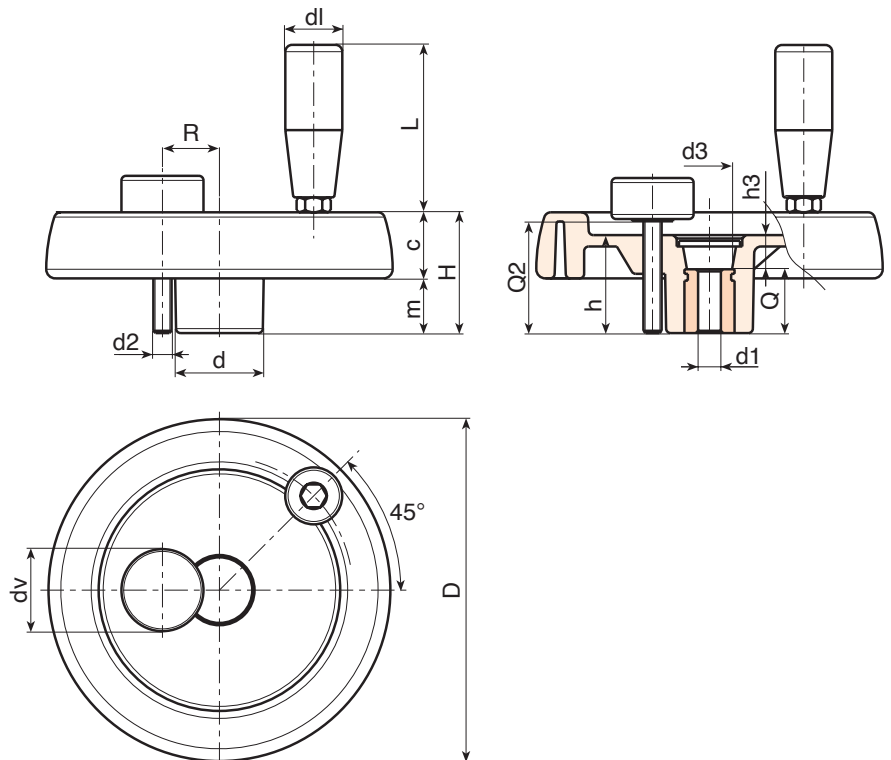
Black cylindrical knob Ral 9011 art. G793-36 with threaded stud [page 249]. Caution: the R and Q2 dimensions of the locking knob must be chosen by the customer according to the dimensions of the machinery on which the solid handwheel will be installed.

Fixing method:

For fixing systems, or execution of keyways or square holes, please refer to the technical notes attached to the catalogue [page 814].

Special requests:

- On request and with a minimum of 50 pieces, the inserts can be supplied with the hole d1 with H7 tolerance and black-oxide finish. Add the letters ZB to the standard code. Example: C970125.TD1001PZB.
- Upon request and for special quantities inserts can be supplied with custom hole diameter d1.
- Upon request and for special quantities inserts can be supplied in different materials/ with different coatings.



Art.	D	H	h	d	m	c	d3	h3	R	d2	Q2	d1	L	Dm	d1 _{H10}	Q	g
C970100.TP0501P	100	39	34	30	18.5	20.5	16	10	20	M6	A.R.	20	56	16	5	24	252
C970125.TP0501P	125	44	37	36	20	24	26	13	22÷25	M6	A.R.	21	65	18	5	24	410
C970150.TD0801P	150	54	44	38	25	29	26	12	25÷28	M8	A.R.	21	65	22	8	32	636
C970175.TD0801P	173	57	47	40	25.5	31.5	26	15	26÷36	M8	A.R.	23	76	22	8	32	812
C970200.TD0801P	202	59	49	44	24	35	27	13	28÷42	M8	A.R.	25	86	28	8	36	1040
C970250.TD0801P	249	68	58	59	29	39	36	22	36÷50	M8	A.R.	25	86	28	8	36	1590

Attention: For a minimum of 50 pieces the diameter d1 can be customised (hole tolerance H10 galvanised and H7 black-oxide treated).
 Dm = Maximum obtainable diameter for subsequent machining (widening).
 dv = 36 mm. A.R. = On request.



Stock availability as % (🛒)
 90% (●) - 40% (●) - 5% (●)

C980



SOLID CONTROL HANDWHEEL WITH REVOLVING/FOLDING HANDLE AND LOCKING KNOB

Materials:

Reinforced and stabilized polyamide.
Resistant to oils and greases.

Surface finish:

Satin.

Handwheel and handle colour:

Black (RAL 9011).

Central cap:

Grey polyamide (RAL 7035 code 13).

Main insert:

Galvanised steel insert with smooth through bore (tolerance H10).

Lateral insert:

Brass insert with threaded through hole.

Lateral handle:

Revolving, folding handle art. M136 [page 405].

Locking knob:

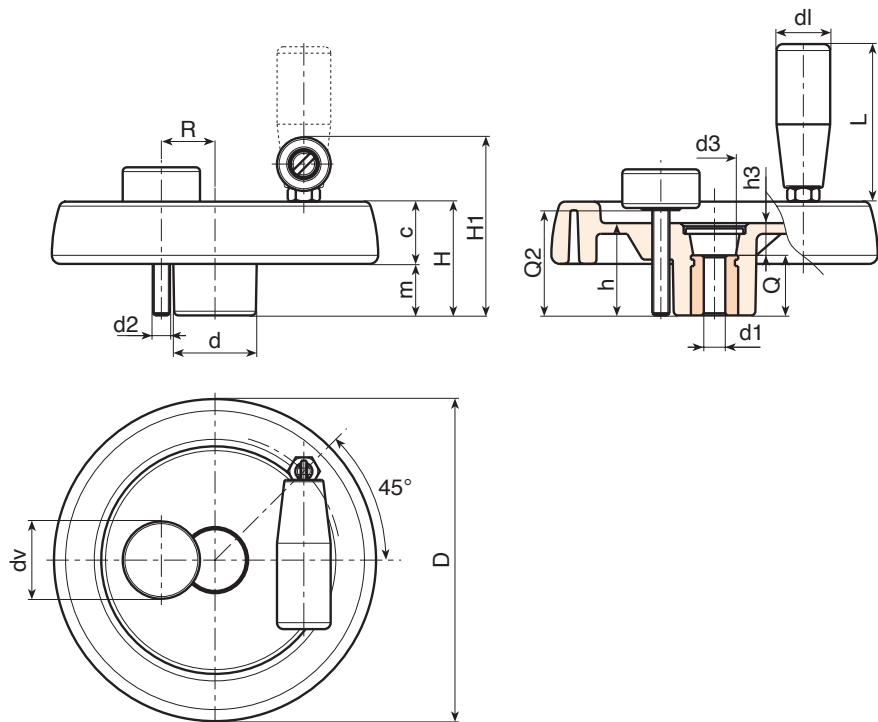
Black cylindrical knob Ral 9011 art. G793-36 with threaded stud [page 249]. Caution: the R and Q2 dimensions of the locking knob must be chosen by the customer according to the dimensions of the machinery on which the solid handwheel will be installed.

Fixing method:

For fixing systems, or execution of keyways or square holes, please refer to the technical notes attached to the catalogue [page 814].

Special requests:

- On request and with a minimum of 50 pieces, the inserts can be supplied with the hole d1 with H7 tolerance and black-oxide finish. Add the letters ZB to the standard code. Example: C980125.TD1001PZB.
- Upon request and for special quantities inserts can be supplied with custom hole diameter d1.
- Upon request and for special quantities inserts can be supplied in different materials/with different coatings.



Art.	D	H	H1	h	d	m	c	d3	h3	R	d2	Q2	dl	L	Dm	d1H10	Q	g
C980100.TP0501P	100	39	63	34	30	18.5	20.5	16	10	20	M6	A.R.	20	56	16	5	24	295
C980125.TP0501P	125	44	74	37	36	20	24	26	13	22±25	M6	A.R.	25	76	18	5	24	420
C980150.TD0801P	150	54	89	44	38	25	29	26	12	25±28	M8	A.R.	26	89	22	8	32	730
C980175.TD0801P	173	57	92	47	40	25.5	31.5	26	15	26±36	M8	A.R.	26	89	22	8	32	885
C980200.TD0801P	202	59	94	49	44	24	35	27	13	28±42	M8	A.R.	26	97	28	8	36	1100
C980250.TD0801P	249	68	100	58	59	29	39	36	22	36±50	M8	A.R.	26	97	28	8	36	1640

Attention: For a minimum of 50 pieces the diameter d1 can be customised (hole tolerance H10 galvanised and H7 black-oxide treated).
Dm = Maximum obtainable diameter for subsequent machining (widening).
dv = 36 mm. A.R. = On request.



Stock availability as % (🛒)
90% (●) - 40% (●) - 5% (●)

C990



PA6
+G.F.

UL94
HB



SOLID CONTROL HANDWHEEL WITH FOLDAWAY HANDLE AND LOCKING KNOB

Materials:

Reinforced and stabilized polyamide.
Resistant to oils and greases.

Surface finish:

Satin.

Handwheel and handle colour:

Black (RAL 9011).

Central cap:

Grey polyamide (RAL 7035 code 13).

Main insert:

Galvanised steel insert with smooth through bore (tolerance H10).

Lateral insert:

Brass insert with threaded through hole.

Lateral handle:

Revolving handle that folds into the handwheel, with hexagonal connection.
Reinforced polyamide handle. Black-oxide treated internal mechanism. Fixed with black-oxide treated hexagon socket button head screw ISO 7838.

Locking knob:

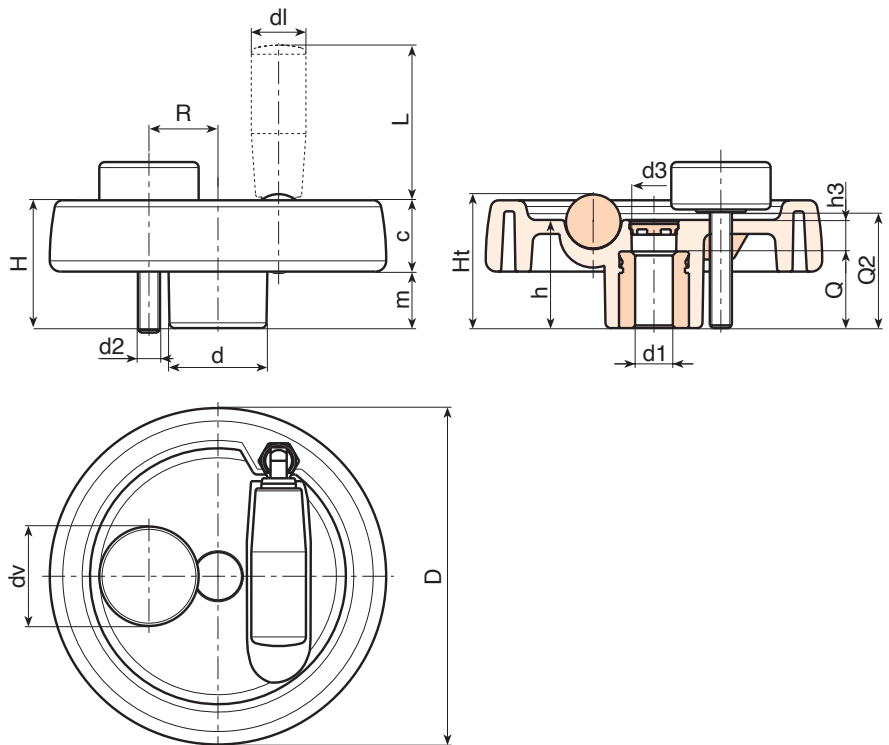
Black cylindrical knob Ral 9011 art. G793-36 with threaded stud [page 249]. Caution: the R and Q2 dimensions of the locking knob must be chosen by the customer according to the dimensions of the machinery on which the solid handwheel will be installed.

Fixing method:

For fixing systems, or execution of keyways or square holes, please refer to the technical notes attached to the catalogue [page 814].

Special requests:

- On request and with a minimum of 50 pieces, the inserts can be supplied with the hole d1 with H7 tolerance and black-oxide finish. Add the letters ZB to the standard code. Example: C989125.TD1001PZB.
- Upon request and for special quantities inserts can be supplied with custom hole diameter d1.
- Upon request and for special quantities inserts can be supplied in different materials/ with different coatings.



Art.	D	H	Ht	h	d	m	c	d3	h3	R	d2	Q2	dl	L	Dm	d1H10	Q	g
● C990125.TP0501P	124	48	49.5	40	36	21.5	26.5	16	15	22÷25	M6	A.R.	20	38	18	5	24	410
● C990150.TD0801P	149	53	-	44	38	24.5	28.5	12	26	25÷28	M8	A.R.	20	58	22	8	32	560
● C990175.TD0801P	174	58	-	48	40	24.5	33.5	16	26	26÷36	M8	A.R.	26	80	28	8	32	775
● C990200.TD0801P	198	63	-	53	44	24.5	38.5	17	26	28÷42	M8	A.R.	27	90	28	8	36	1075
● C990250.TD0801P	250	67	-	58	60	29	38	22	36	36÷50	M8	A.R.	27	90	28	8	36	1560

Attention: For a minimum of 50 pieces the diameter d1 can be customised (hole tolerance H10 galvanised and H7 black-oxide treated).
Dm = Maximum obtainable diameter for subsequent machining (widening).
dv = 36 mm. A.R. = On request.



Stock availability as % (🛒)
90% (●) - 40% (●) - 5% (●)



RESISTANT,
SUITABLE FOR
ANY USE.

