



**BOTECO<sup>®</sup>**

**YOUR MECHANICAL COMPONENT**

## **GROUP - D**

### **CONTROL HANDWHEELS**





IT IS NOT FOR EVERYONE TO  
HAVE THE **KEY** OF BUSINESS

---

[www.boteco.com](http://www.boteco.com)



**BOTECO**<sup>®</sup>  
YOUR MECHANICAL COMPONENT

# D205



## TWO-SPOKE CONTROL HANDWHEEL

### Materials:

Reinforced and stabilized polyamide.  
Resistant to oils and greases.

### Surface finish:

Satin.

### Colour:

Black (RAL 9011).

### Central cap:

Grey polyamide (RAL 7035 code 13).

### Alternative cap colours:

Orange (RAL 2004 cod. 02).  
Blue (RAL 5015 cod. 07).  
Yellow (RAL 1021 cod. 10).  
Red (RAL 3000 cod. 16).  
Green (RAL 6024 cod. 17).  
Black (RAL 9011 cod. 01).

### Main insert:

Galvanised steel insert with smooth through bore (tolerance H10).

### Hub:

Solid Hub.

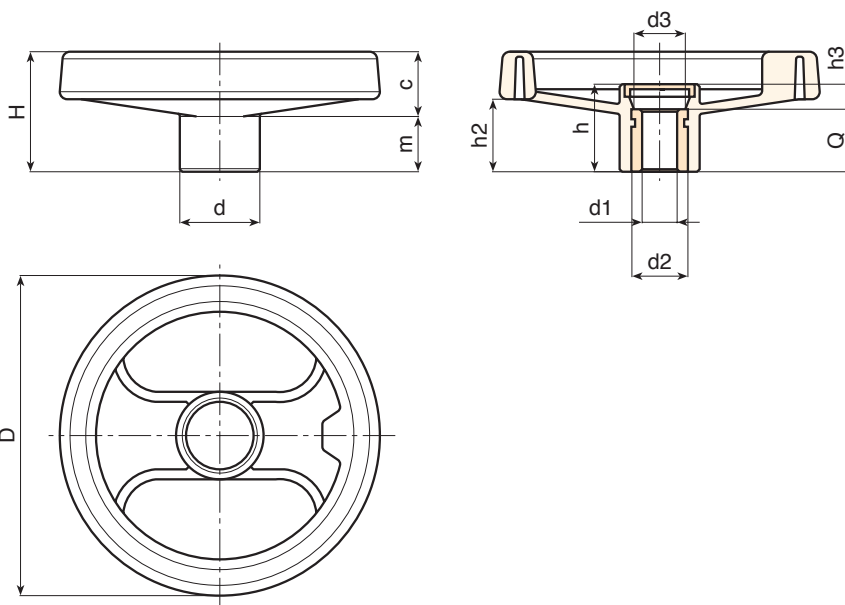
(\*) Lightweight hub.

### Fixing method:

For fixing systems, or execution of keyways or square holes, please refer to the technical notes attached to the catalogue [page 814].

### Special requests:

- Upon request and for a minimum of 50 pieces inserts can be supplied with hole d1 with tolerance H7 and black oxide treated finish. Add letters ZB to the standard code. Example: D205130.TD1001PZB.
- Upon request and for special quantities inserts can be supplied with custom hole diameter d1.
- Upon request and for special quantities inserts can be supplied in different materials/with different coatings.
- Upon request and for special quantities the spoke handwheels are available in the colours indicated in the chart (reduced range) [page 807].



🛒	Art.	D	H	h	d	m	c	h2	h3	d3	Dm	d1 <sub>H10</sub>	Q	📦
●	D205080.TP0501P	80	34	26	24.5	16	18	20	6	16	12	5	20	94
●	D205100.TP0501P	99	43	33	28	20	23	26.5	9	16	16	5	24	152
●	D205130.TP0501P	129	50	36	32	21	29	32	12	26	18	5	24	240
●	D205130.TD1201P	129	50	36	32	21	29	32	12	26	18	12	24	235
●	D205160.TD0801P	159	57	40.5	40	22	35	34	8.5	26	22	8	32	390
●	D205160.TD1401P	159	57	40.5	40	22	35	34	8.5	26	22	14	32	380
●	D205160.TD1601P	159	57	40.5	40	22	35	34	8.5	26	22	16	32	377
●	D205200.TD0801P	198	61.5	39.5	51	17.5	44	33	7.5	26	22	(*)8	32	630
●	D205200.TD1001P	198	61.5	39.5	51	17.5	44	33	7.5	26	22	(*)10	32	628
●	D205200.TD1201P	198	61.5	39.5	51	17.5	44	33	7.5	26	22	(*)12	32	626
●	D205200.TD2001P	198	61.5	39.5	51	17.5	44	33	7.5	26	22	(*)20	32	615
●	D205250.TD0801P	252	70	47	55.5	24	46	39	11	24	28	(*)8	36	920
●	D205250.TD1201P	252	70	47	55.5	24	46	39	11	24	28	(*)12	36	917
●	D205350.TD0801P	346	80	49.5	67.5	24	56	43.5	17.5	35	30	(*)8	32	1530

Attention: For a minimum of 50 pieces the diameter d1 can be customised (hole tolerance H10 galvanised and H7 black-oxide treated).  
Dm = Maximum obtainable diameter for subsequent machining (widening).



# D206



## TWO-SPOKE CONTROL HANDWHEEL WITH REVOLVING HANDLE

### Materials:

Reinforced and stabilized polyamide. Resistant to oils and greases.

Surface finish: **Satin.**

Colour: **Black (RAL 9011).**

### Central cap:

Grey polyamide (RAL 7035 code 13).

### Alternative cap colours:

Orange (RAL 2004 cod. 02).  
 Blue (RAL 5015 cod. 07).  
 Yellow (RAL 1021 cod. 10).  
 Red (RAL 3000 cod. 16).  
 Green (RAL 6024 cod. 17).  
 Black (RAL 9011 cod. 01).

### Main insert:

Galvanised steel insert with smooth through bore (tolerance H10).

### Lateral insert:

Brass insert with threaded through hole.

### Lateral handle:

D206: Revolving handle art. M144 (page 400).

D209: Revolving handle art. M145 (page 404).

D210: Revolving handle art. M129 (page 401).

D211: Revolving handle art. M202 (page 408).

### Hub:

Solid Hub.

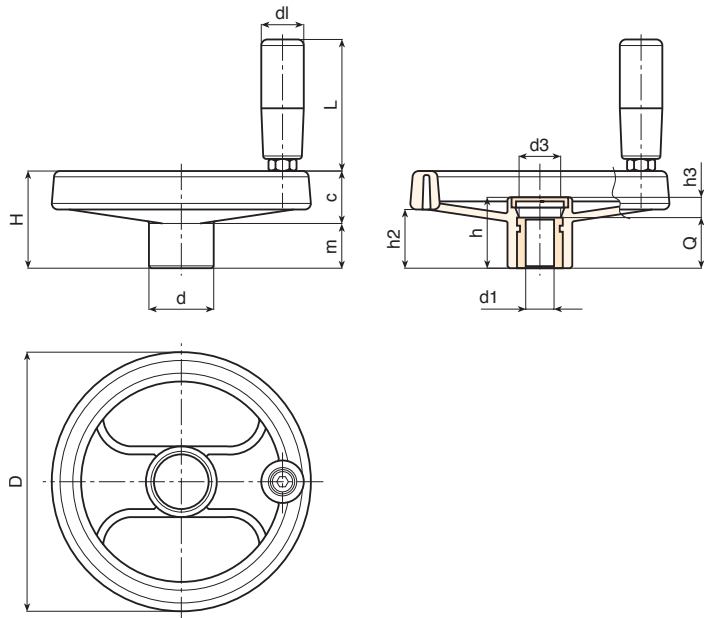
(\*) Lightweight hub.

### Fixing method:

For fixing systems, or execution of keyways or square holes, please refer to the technical notes attached to the catalogue [page 814].

### Special requests:

- Upon request and for a minimum of 50 pieces inserts can be supplied with hole d1 with tolerance H7 and black oxide treated finish. Add letters ZB to the standard code. Example: D206130.TD1001PZB.
- Upon request and for special quantities inserts can be supplied with custom hole diameter d1.
- Upon request and for special quantities inserts can be supplied in different materials/with different coatings.
- Upon request and for special quantities spoke handwheels, handles and caps are available in the colours indicated in the chart (reduced range) [page 807].



Art.	D	H	h	d	m	c	h2	h3	d3	dl	L	Dm	d1H10	Q	g
D206080.TP0501P	80	34	26	24.5	16	18	20	6	16	20	56	12	5	20	125
D206080.TD0801P	80	34	26	24.5	16	18	20	6	16	20	56	12	8	20	122
D206080.TD1001P	80	34	26	24.5	16	18	20	6	16	20	56	12	10	20	119
D206100.TP0501P	99	43	33	28	20	23	26.5	9	16	20	56	16	5	24	182
D206100.TD0801P	99	43	33	28	20	23	26.5	9	16	20	56	16	8	24	182
D206100.TD1001P	99	43	33	28	20	23	26.5	9	16	20	56	16	10	24	179
D206100.TD1201P	99	43	33	28	20	23	26.5	9	16	20	56	16	12	24	177
D206130.TD0501P	129	50	36	32	21	29	32	12	26	21	65	18	5	24	296
D206130.TD0801P	129	50	36	32	21	29	32	12	26	21	65	18	8	24	293
D206130.TD1001P	129	50	36	32	21	29	32	12	26	21	65	18	10	24	291
D206130.TD1201P	129	50	36	32	21	29	32	12	26	21	65	18	12	24	289
D206160.TD0801P	159	57	40.5	40	22	35	34	8.5	26	23	76	22	8	32	458
D206160.TD1401P	159	57	40.5	40	22	35	34	8.5	26	23	76	22	14	32	450
D206160.TD2001P	159	57	40.5	40	22	35	34	8.5	26	23	76	22	20	32	446
D206200.TD0801P	198	61.5	39.5	51	17.5	44	33	7.5	26	23	76	22	(*)8	32	700
D206200.TD1601P	198	61.5	39.5	51	17.5	44	33	7.5	26	23	76	22	(*)16	32	690
D206200.TD2001P	198	61.5	39.5	51	17.5	44	33	7.5	26	23	76	22	(*)20	32	685
D206250.TD0801P	252	70	47	55.5	24	46	39	11	24	25	86	28	(*)8	36	1030
D206250.TD2001P	252	70	47	55.5	24	46	39	11	24	25	86	28	(*)20	36	1015
D206350.TD0801P	346	80	49.5	67.5	24	56	43.5	17.5	35	25	86	30	(*)(+8	32	1640

Attention: For a minimum of 50 pieces the diameter d1 can be customised (hole tolerance H10 galvanised and H7 black-oxide treated).  
 Dm = Maximum obtainable diameter for subsequent machining (widening).



Stock availability as % (🛒)  
 90% (●) - 40% (●) - 5% (●)

# D209



## TWO-SPOKE CONTROL HANDWHEEL WITH REVOLVING HANDLE M145

Art.	D	H	h	d	m	c	h2	h3	d3	dl	L	Dm	d1 <sub>H10</sub>	Q		
D209080.TP0501P	80	34	26	24.5	16	18	20	6	16	20	55	12	5	20	126	
D209100.TP0501P	99	43	33	28	20	23	26.5	9	16	20	55	16	5	24	185	
D209130.TD0501P	129	50	36	32	21	29	32	12	26	23	66	18	5	24	314	
D209160.TD0801P	159	57	40.5	40	22	35	34	8.5	26	25	76	22	8	32	467	
D209200.TD0801P	198	61.5	39.5	51	17.5	44	33	7.5	26	25	87	22	(*)8	32	712	
D209250.TD0801P	252	70	47	55.5	24	46	39	11	24	25	87	28	(*)8	36	1010	
D209350.TD0801P	346	80	49.5	67.5	24	56	43.5	17.5	35	25	87	30	(*)(+)8	32	1620	

Attention: For a minimum of 50 pieces the diameter d1 can be customised (hole tolerance H10 galvanised and H7 black-oxide treated).  
Dm = Maximum obtainable diameter for subsequent machining (widening).

### Lateral handle:

Revolving handle art. M145 (page 404).

# D210



## TWO-SPOKE CONTROL HANDWHEEL WITH REVOLVING HANDLE M129

Art.	D	H	h	d	m	c	h2	h3	d3	dl	L	Dm	d1 <sub>H10</sub>	Q		
D210080.TP0501P	80	34	26	24.5	16	18	20	6	16	20	56	12	5	20	145	
D210100.TP0501P	99	43	33	28	20	23	26.5	9	16	20	56	16	5	24	235	
D210130.TD0501P	129	50	36	32	21	29	32	12	26	21	65	18	5	24	350	
D210160.TD0801P	159	57	40.5	40	22	35	34	8.5	26	21	76	22	8	32	610	
D210200.TD0801P	198	61.5	39.5	51	17.5	44	33	7.5	26	25	76	22	(*)8	32	755	
D210250.TD0801P	252	70	47	55.5	24	46	39	11	24	25	87	28	(*)8	36	975	
D210350.TD0801P	346	80	49.5	67.5	24	56	43.5	17.5	35	25	87	30	(*)(+)8	32	1630	

Attention: For a minimum of 50 pieces the diameter d1 can be customised (hole tolerance H10 galvanised and H7 black-oxide treated).  
Dm = Maximum obtainable diameter for subsequent machining (widening).

### Lateral handle:

Revolving handle art. M129 (page 401).

# D211



## TWO-SPOKE CONTROL HANDWHEEL WITH REVOLVING HANDLE M202

Art.	D	H	h	d	m	c	h2	h3	d3	dl	L	Dm	d1 <sub>H10</sub>	Q		
D211250.TD0801P	252	70	47	55.5	24	46	39	11	24	40	67	28	(*)8	36	975	
D211350.TD0801P	346	80	49.5	67.5	24	56	43.5	17.5	35	40	67	30	(*)(+)8	32	1630	

Attention: For a minimum of 50 pieces the diameter d1 can be customised (hole tolerance H10 galvanised and H7 black-oxide treated).  
Dm = Maximum obtainable diameter for subsequent machining (widening).

### Lateral handle:

Revolving handle art. M202 (page 408).

# DBASE



## TWO-SPOKE CONTROL HANDWHEEL BASE WITH PROVISION FOR HANDLE

### Materials:

Reinforced and stabilized polyamide. Resistant to oils and greases.

### Surface finish:

Satin.

### Colour:

Black (RAL 9011).

### Central cap:

Grey polyamide (RAL 7035 code 13).

### Alternative cap colours:

Orange (RAL 2004 cod. 02).  
 Blue (RAL 5015 cod. 07).  
 Yellow (RAL 1021 cod. 10).  
 Red (RAL 3000 cod. 16).  
 Green (RAL 6024 cod. 17).  
 Black (RAL 9011 cod. 01).

### Main insert:

Galvanised steel insert with smooth through bore (tolerance H10).

### Lateral insert:

Brass insert with threaded through hole.

### Hub:

Solid Hub.

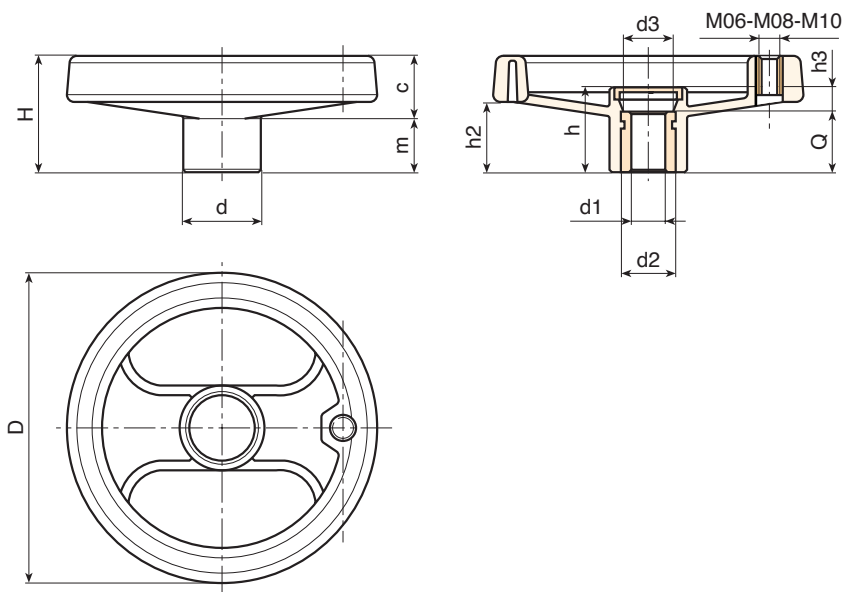
(\*) Lightweight hub.

### Fixing method:

For fixing systems, or execution of keyways or square holes, please refer to the technical notes attached to the catalogue [page 814].

### Special requests:

- On request and with a minimum of 50 pieces, the inserts can be supplied with the hole d1 with H7 tolerance and black-oxide finish. Add the letters ZB to the standard code. Example: D130.ZB1001PZB.
- Upon request and for special quantities inserts can be supplied with custom hole diameter d1.
- Upon request and for special quantities inserts can be supplied in different materials/with different coatings.
- Upon request and for special quantities available in the colours indicated in the chart [page 807].



Art.	D	H	h	d	m	c	h2	h3	d3	d1 <sub>H10</sub>	g	Handle hole
D80.TP0501PZ1	80	34	26	24.5	16	18	20	6	16	5	95	M6
D100.TP0501PZ1	99	43	33	28	20	23	26.5	9	16	5	150	M6
D130.TP0501PZ1	129	50	36	32	21	29	32	12	26	5	240	M8
D160.TD0801PZ1	159	57	40.5	40	22	35	34	8.5	26	8	390	M8
D200.TD0801PZ1	198	61.5	39.5	51	17.5	44	33	7.5	26	(*)8	640	M8
D250.TD0801PZ1	252	70	47	55.5	24	46	39	11	24	(*)8	910	M10
D350.TD0801PZ1	346	80	49.5	67.5	24	56	43.5	17.5	35	(*)(+8)	1530	M10

Attention: For a minimum of 50 pieces the diameter d1 can be customised (hole tolerance H10 galvanised and H7 black-oxide treated).



Stock availability as % (🛒)  
 90% (●) - 40% (●) - 5% (●)

# D207



## TWO-SPOKE CONTROL HANDWHEEL WITH REVOLVING FOLDAWAY HANDLE

### Materials:

Reinforced and stabilized polyamide. Resistant to oils and greases.

### Surface finish:

Satin.

### Colour:

Black (RAL 9011).

### Central cap:

Grey polyamide (RAL 7035 code 13).

### Alternative cap colours:

Orange (RAL 2004 cod. 02).  
 Blue (RAL 5015 cod. 07).  
 Yellow (RAL 1021 cod. 10).  
 Red (RAL 3000 cod. 16).  
 Green (RAL 6024 cod. 17).  
 Black (RAL 9011 cod. 01).

### Main insert:

Galvanised steel insert with smooth through bore (tolerance H10).

### Lateral handle:

Flush, foldaway revolving handle, with hexagonal connection. Reinforced polyamide handle. Black-oxide treated internal mechanism. Fixed with black-oxide treated hexagon socket button head screw ISO 7838.

### Hub:

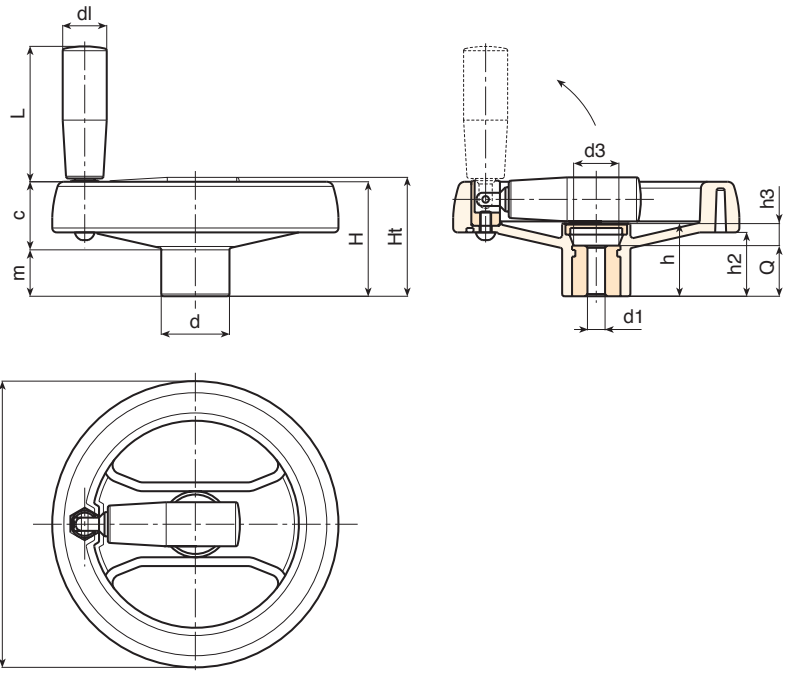
Solid Hub.

### Fixing method:

For fixing systems, or execution of keyways or square holes, please refer to the technical notes attached to the catalogue [page 814].

### Special requests:

- Upon request and for a minimum of 50 pieces inserts can be supplied with hole d1 with tolerance H7 and black oxide treated finish. Add letters ZB to the standard code. Example: D207130.TD1001PZB.
- Upon request and for special quantities inserts can be supplied with custom hole diameter d1.
- Upon request and for special quantities inserts can be supplied in different materials/with different coatings.
- Upon request and for special quantities spoke handwheels, handles and caps are available in the colours indicated in the chart (reduced range) [page 807].



Art.	D	H	Ht	h	d	m	c	h2	h3	d3	d1	L	Dm	d1H10	Q	g
D207130.TD0501P	129	53	55	32	32	22	31	30	12	26	20	58	18	5	20	300
D207130.TD0801P	129	53	55	32	32	22	31	30	12	26	20	58	18	8	20	297
D207130.TD1201P	129	53	55	32	32	22	31	30	12	26	20	58	18	12	20	294
D207160.TD0501P	159	55	59	33.5	40	20.5	34.5	31	9.5	26	25	71	22	5	24	450
D207160.TD0801P	159	55	59	33.5	40	20.5	34.5	31	9.5	26	25	71	22	8	24	447
D207160.TD1201P	159	55	59	33.5	40	20.5	34.5	31	9.5	26	25	71	22	12	24	443
D207160.TD1401P	159	55	59	33.5	40	20.5	34.5	31	9.5	26	25	71	22	14	24	440
D207160.TD1601P	159	55	59	33.5	40	20.5	34.5	31	9.5	26	25	71	22	16	24	436
D207350.TD0801P	346	80	86	49.5	67.5	24	56	43.5	17.5	35	40	64	30	8	32	1650

Attention: For a minimum of 50 pieces the diameter d1 can be customised (hole tolerance H10 galvanised and H7 black-oxide treated). Dm = Maximum obtainable diameter for subsequent machining (widening).



# D207200



MODELLO DEPOSITATO

## "EUROMODEL" TWO-SPOKE CONTROL HANDWHEEL WITH REVOLVING FOLDAWAY HANDLE

### Materials:

Reinforced and stabilized polyamide.  
Resistant to oils and greases.

### Surface finish:

Satin.

### Colour:

Black (RAL 9011).

### Central cap:

Grey polyamide (RAL 7035 code 13).

### Alternative cap colours:

Orange (RAL 2004 cod. 02).  
Blue (RAL 5015 cod. 07).  
Yellow (RAL 1021 cod. 10).  
Red (RAL 3000 cod. 16).  
Green (RAL 6024 cod. 17).  
Black (RAL 9011 cod. 01).

### Main insert:

Galvanised steel insert with smooth through bore (tolerance H10).

### Lateral handle:

Flush, foldaway revolving handle, with hexagonal connection. Reinforced polyamide handle.  
Black-oxide treated internal mechanism. Fixed with black-oxide treated hexagon socket button head screw ISO 7838.

### Hub:

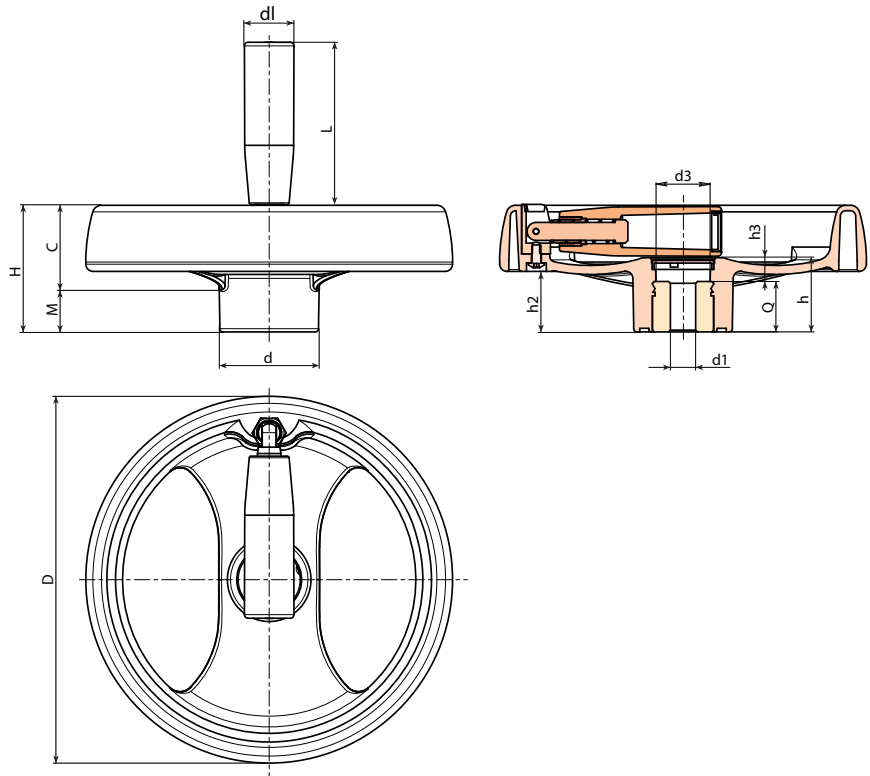
Solid Hub.

### Fixing method:

For fixing systems, or execution of keyways or square holes, please refer to the technical notes attached to the catalogue [page 814].

### Special requests:

- Upon request and for a minimum of 50 pieces inserts can be supplied with hole d1 with tolerance H7 and black oxide treated finish. Add letters ZB to the standard code. Example: D207200.TD1801PZB.
- Upon request and for special quantities inserts can be supplied with custom hole diameter d1.
- Upon request and for special quantities inserts can be supplied in different materials/with different coatings.
- Upon request and for special quantities spoke handwheels, handles and caps are available in the colours indicated in the chart (reduced range) [page 807].



Art.	D	H	h	d	m	c	h3	d3	d1	L	Dm	d1H10	Q	g
D207200.TD0801P	200	69	41	54	23	46	13	30	27	91	24	8	28	660

Attention: For a minimum of 50 pieces the diameter d1 can be customised (hole tolerance H10 galvanised and H7 black-oxide treated).  
Dm = Maximum obtainable diameter for subsequent machining (widening).



Stock availability as % (🛒)  
90% (●) - 40% (●) - 5% (●)



# D208



## TWO-SPOKE CONTROL HANDWHEEL WITH REVOLVING FOLDING HANDLE

### Materials:

Reinforced and stabilized polyamide. Resistant to oils and greases.

Surface finish: Satin.

Colour: Black (RAL 9011).

### Central cap:

Grey polyamide (RAL 7035 code 13).

### Alternative cap colours:

Orange (RAL 2004 cod. 02).  
 Blue (RAL 5015 cod. 07).  
 Yellow (RAL 1021 cod. 10).  
 Red (RAL 3000 cod. 16).  
 Green (RAL 6024 cod. 17).  
 Black (RAL 9011 cod. 01).



### Main insert:

Galvanised steel insert with smooth through bore (tolerance H10).

### Lateral insert:

Brass insert with threaded through hole.

(+) Hexagonal black-oxide treated steel insert with threaded through hole. Fixed with black-oxide treated hexagon socket button head screw ISO 7838.

### Lateral handle:

Revolving, folding handle art. M136 [page 405].

### Hub:

Solid Hub.

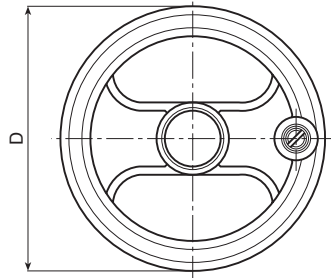
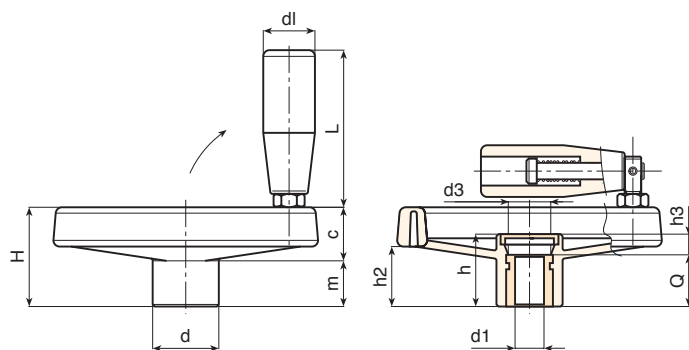
(\*) Lightweight hub.

### Fixing method:

For fixing systems, or execution of keyways or square holes, please refer to the technical notes attached to the catalogue [page 814].

### Special requests:

- Upon request and for a minimum of 50 pieces inserts can be supplied with hole d1 with tolerance H7 and black oxide treated finish. Add letters ZB to the standard code. Example: D208160.TD1501PZB.
- Upon request and for special quantities inserts can be supplied with custom hole diameter d1.
- Upon request and for special quantities inserts can be supplied in different materials/with different coatings.
- Upon request and for special quantities spoke handwheels, handles and caps are available in the colours indicated in the chart (reduced range) [page 807].



Art.	D	H	h	d	m	c	h2	h3	d3	dl	L	Dm	d1 <sub>H10</sub>	Q	g
D208080.TP0501P	80	34	26	24.5	16	18	20	6	16	20	56	12	5	20	135
D208080.TD0801P	80	34	26	24.5	16	18	20	6	16	20	56	12	8	20	132
D208080.TD1001P	80	34	26	24.5	16	18	20	6	16	20	56	12	10	20	129
D208100.TP0501P	99	43	33	28	20	23	26.5	9	16	20	56	16	5	24	192
D208100.TD0801P	99	43	33	28	20	23	26.5	9	16	20	56	16	8	24	189
D208100.TD1001P	99	43	33	28	20	23	26.5	9	16	20	56	16	10	24	186
D208100.TD1201P	99	43	33	28	20	23	26.5	9	16	20	56	16	12	24	183
D208130.TD0501P	129	50	36	32	21	29	32	12	26	25	76	18	5	24	311
D208130.TD0801P	129	50	36	32	21	29	32	12	26	25	76	18	8	24	308
D208130.TD1001P	129	50	36	32	21	29	32	12	26	25	76	18	10	24	305
D208130.TD1201P	129	50	36	32	21	29	32	12	26	25	76	18	12	24	302
D208160.TD0801P	159	57	40.5	40	22	35	34	8.5	26	25	76	22	8	32	460
D208160.TD1401P	159	57	40.5	40	22	35	34	8.5	26	25	76	22	14	32	452
D208160.TD2001P	159	57	40.5	40	22	35	34	8.5	26	25	76	22	20	32	448
D208200.TD0801P	198	61.5	39.5	51	17.5	44	33	7.5	26	25	76	22	(*)8	32	704
D208200.TD1601P	198	61.5	39.5	51	17.5	44	33	7.5	26	25	76	22	(*)16	32	694
D208200.TD2001P	198	61.5	39.5	51	17.5	44	33	7.5	26	25	76	22	(*)20	32	689
D208250.TD0801P	252	70	47	55.5	24	46	39	11	24	26	97	28	(*)8	36	1080
D208250.TD2001P	252	70	47	55.5	24	46	39	11	24	26	97	28	(*)20	36	1065
D208350.TD0801P	346	80	49.5	67.5	24	56	43.5	17.5	35	26	97	30	(*)(+)*8	32	1690

Attention: For a minimum of 50 pieces the diameter d1 can be customised (hole tolerance H10 galvanised and H7 black-oxide treated).  
 Dm = Maximum obtainable diameter for subsequent machining (widening).



Stock availability as % (🛒)  
 90% (●) - 40% (●) - 5% (●)

# DFLAN



## LOCKING FLANGE FOR POSITIONING (ACCESSORY FOR ART. D601-D602-D603-D604)

**Materials:**  
Impact resistant polystyrene.

**Surface finish:**  
Smooth.

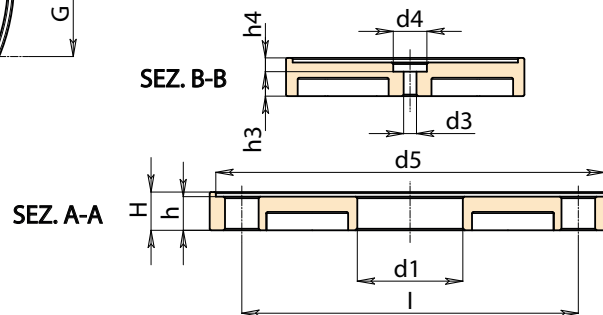
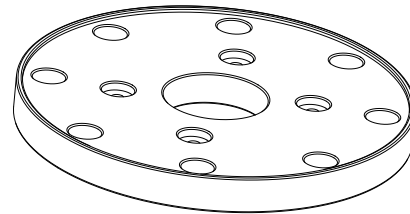
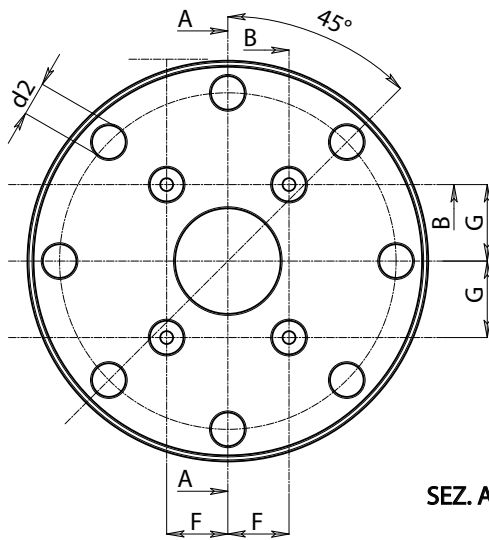
**Colour:**  
Black (RAL 9011).

**Holes:**  
Holes obtained by moulding the plastic. Holes marked d2 cannot be modified. It is possible to change both the diameter and the positioning of holes marked d1, d3, d4.

**Fixing method:**  
Use the 4 central holes d3. Screws not supplied.

**Special requests:**

- Upon request and for special quantities, customised position and diameter of holes d1, d3, d4.



Art.	D	H	h	h3	h4	I	F	G	d2	d3	d4	d5	d1	
● DFLAN.T131X34,5X4,2	131	12.5	11	8	3	110	20	25	11	4.5	11	127	34.5	80
● DFLAN.T131X.....	131	12.5	11	A.R.	A.R.	110	A.R.	A.R.	11	A.R.	A.R.	127	A.R.	-

A.R. = Upon request.



Stock availability as % (🛒)  
90% (●) - 40% (●) - 5% (●)

# D161



## TAPERED HANDWHEEL WITH INSERT AND SMOOTH BORE OR THREADED HOLE

### Materials:

Reinforced polyamide. Resistant to oils and greases.

### Surface finish:

Satin.

### Colour:

Black (RAL 9011).

### Main insert:

#### Version TD:

Galvanised steel insert with blind smooth bore (tolerance H10).

#### Version TM:

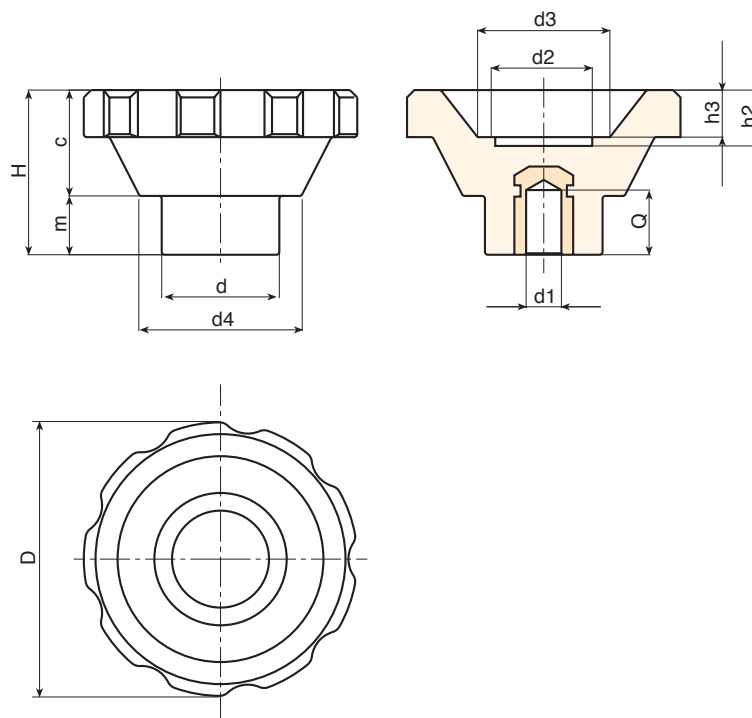
Galvanised steel insert with female threaded hole (tolerance 6H).

### Special requests:

- Upon request and for special quantities inserts can be supplied with custom hole diameter  $d_1$ .
- Upon request and for special quantities inserts can be supplied in different materials or finishes.

### Fixing method:

For fixing systems, or execution of keyways or square holes, please refer to the technical notes attached to the catalogue [page 814].



### Version TM with female threaded hole.

Art.	D	H	d	c	m	d2	d3	d4	h2	h3	d1 6H	Q	g
D16195.TM1201	93	56.5	40	36.5	20	32	45	55.5	20	17	M12	25	338

Attention: for a minimum of 50 pieces the diameter  $d_1$  can be produced with the requested dimensions (tolerance 6H).

### Version TD with blind smooth bore.

Art.	D	H	d	c	m	d2	d3	d4	h2	h3	Dm	d1H10	Q	g
D16195.TD0801	93	56.5	40	36.5	20	32	45	55.5	20	17	22	8	27	340

Attention: For a minimum of 50 pieces the diameter  $d_1$  can be customised (hole tolerance H10 galvanised and H7 black-oxide treated).  
Dm = Maximum obtainable diameter for subsequent machining (widening).

# D601

+135°  
-30°

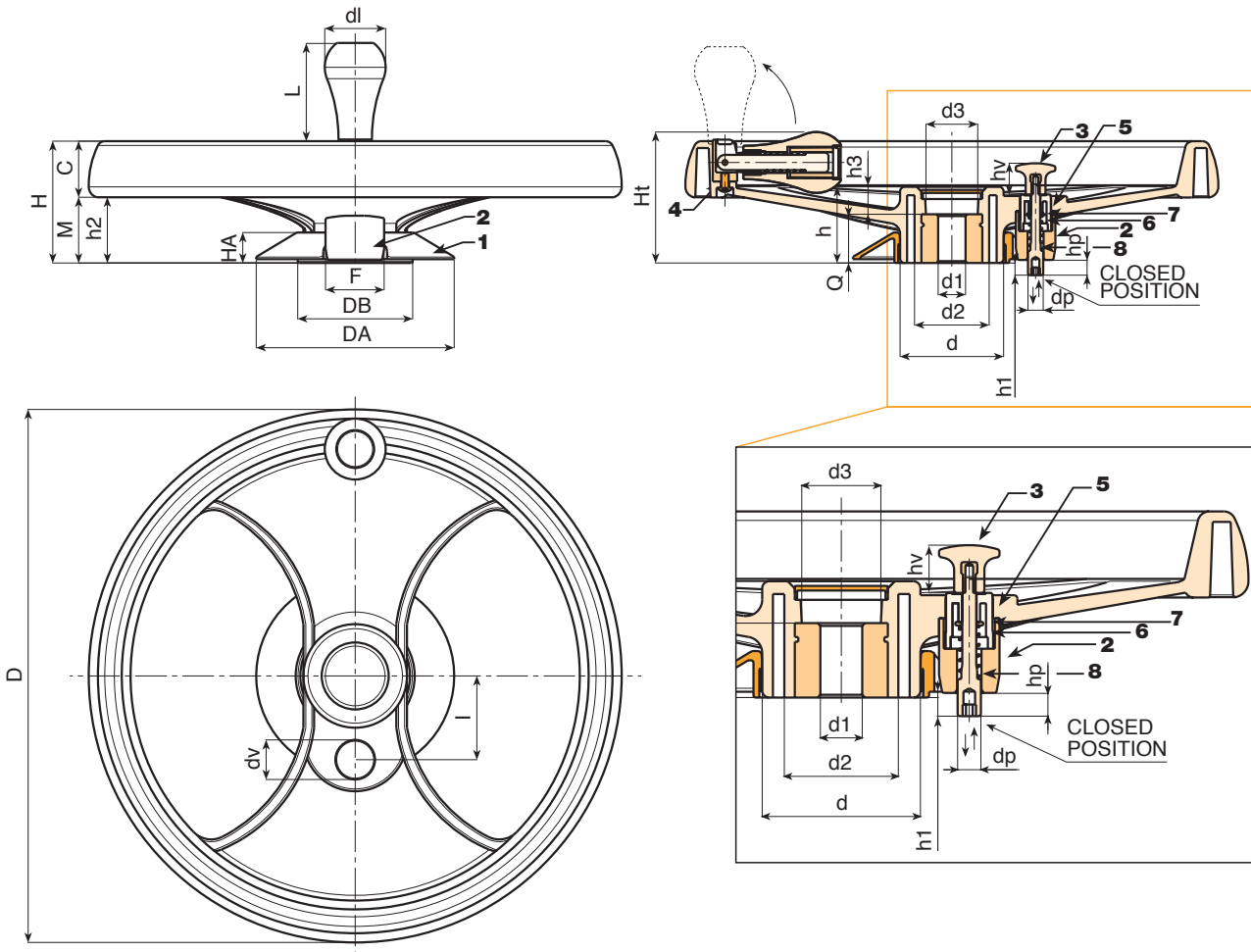
PA6  
+G.F.

UL94  
HB

RoHS  
COMPLIANT

## TWO-SPOKE HANDWHEEL WITH FOLDAWAY HANDLE AND LOCKING PISTON

This product type is a variation of our traditional handwheel D207-350. By simply adding a special assembly kit this product adapts to the requirements of a particular market: the mobile shelving market (mobile storage cabinets mounted on a trackway). This handwheel is used to move the shelving along the trackway. A fitted lock or locking piston serves to lock, stop, position the shelving units in certain positions.



Art.	D	H	Ht	h	d	M	C	h2	h3	d2	d3	Dm
D601350.TD2001H	346	80	86	49.5	67.5	24	56	43.5	17.5	49	35	28

Dm = Maximum obtainable diameter for subsequent machining. (widening)  
A.R. = Upon request, for a minimum of 50 pieces.



Stock availability as % (🛒)  
90% (●) - 40% (●) - 5% (●)

# D601



## TWO-SPOKE HANDWHEEL WITH FOLDAWAY HANDLE AND LOCKING PISTON

### Materials:

Reinforced and stabilized polyamide. Resistant to oils and greases.

### Surface finish:

Satin.

### Colour:

Black (RAL 9011).

### Central cap:

Grey polyamide (RAL 7035 code 13).

### Alternative cap colours:

Orange (RAL 2004 cod. 02).

Blue (RAL 5015 cod. 07).

Yellow (RAL 1021 cod. 10).

Red (RAL 3000 cod. 16).

Green (RAL 6024 cod. 17).

Black (RAL 9011 cod. 01).

### Locking piston kit:

(1) PA6+GF hole cover ring. Colour Black (RAL 9011). Push-fit assembly. Removable.

(2) PA6+GF piston holder. Colour Black (RAL 9011). Assembly with two self-tapping, galvanised steel screws, screwdriver head (TC) 3.5x30.

(3) PA6+GF gear stick d. 26 with positioning brackets. Colour Black (RAL 9011). With M04 brass female threaded insert.

(5) PA6+GF gear stick support with positioner. Colour Black (RAL 9011).

(6) Galvanised steel return spring.

(7) Galvanised steel washer.

(8) Galvanised steel locking piston. Seat for Allen wrench no. 5 for fastening. Piston stroke 10 mm. Useful projection from handwheel 8 mm.

### Inserts:

Galvanised steel insert with smooth through bore (tolerance H10).

(4) Black-oxide treated hexagon socket button head screw ISO 7838 for fastening handle.

### Lateral handle:

Flush, foldaway revolving handle in handwheel M202 "Euromodel", with hexagonal connection. PA6+GF handle, black RAL 9011.

Black-oxide treated internal mechanism. Fixed with black-oxide treated hexagon socket button head screw ISO 7838. Handle cap in grey polyamide (RAL 7035 code 13).

### Fixing method:

For fixing systems, or execution of keyways or square holes, please refer to the technical notes attached to the catalogue [page 814].

### Special requests:

- Upon request and for a minimum of 50 pieces inserts can be supplied with hole d1 with tolerance H7 and black oxide treated finish. Add letters ZB to the standard code. Example: D601350.TD1001PZB.
- Upon request and for special quantities inserts can be supplied with custom hole diameter d1.
- Upon request and for special quantities inserts can be supplied in different materials/with different coatings.
- Upon request and for special quantities available in the colours indicated in the chart [page 807].



Art.	Dm	d1 <sub>H10</sub>	Q	l	dv	hv	h1	dp	hp	DA	HA	DB	F	
D601350.TD2001H	28	20	32	55	20	21	8	10	10	131	20	76	38	1800

Dm = Maximum obtainable diameter for subsequent machining. (widening)

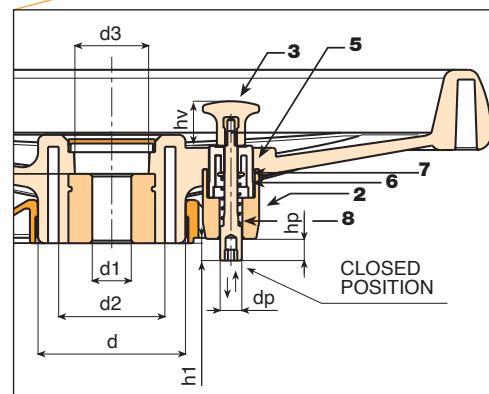
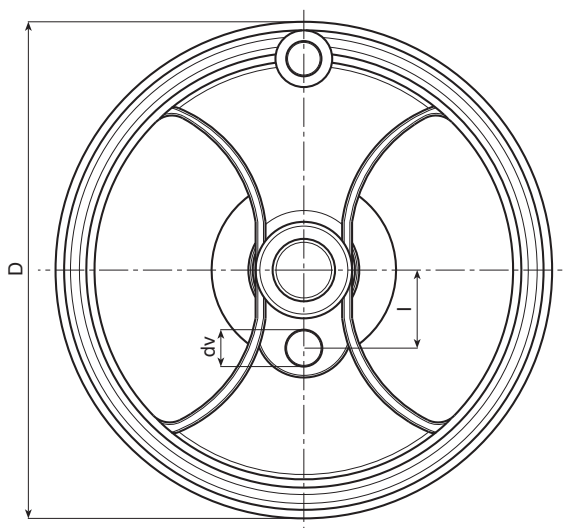
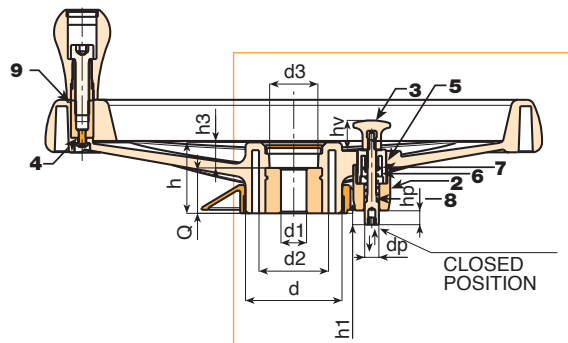
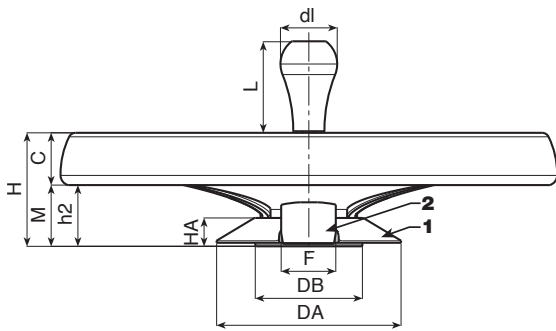
A.R. = Upon request, for a minimum of 50 pieces.

# D602



## TWO-SPOKE HANDWHEEL WITH REVOLVING HANDLE AND LOCKING PISTON

This product type is a variation of our traditional handwheel D207-350. By simply adding a special assembly kit this product adapts to the requirements of a particular market: the mobile shelving market (mobile storage cabinets mounted on a trackway). This handwheel is used to move the shelving along the trackway. A fitted lock or locking piston serves to lock, stop, position the shelving units in certain positions.



Art.	D	H	Ht	h	d	M	C	h2	h3	d2	d3	Dm
D602350.TD2001H	346	80	86	49.5	67.5	24	56	43.5	17.5	49	35	28

Dm = Maximum obtainable diameter for subsequent machining. (widening)  
A.R. = Upon request, for a minimum of 50 pieces.



# D602



## TWO-SPOKE HANDWHEEL WITH REVOLVING HANDLE AND LOCKING PISTON

### Materials:

Reinforced and stabilized polyamide. Resistant to oils and greases.

### Surface finish:

Satin.

### Colour:

Black (RAL 9011).

### Central cap:

Grey polyamide (RAL 7035 code 13).

### Alternative cap colours:

Orange (RAL 2004 cod. 02).

Blue (RAL 5015 cod. 07).

Yellow (RAL 1021 cod. 10).

Red (RAL 3000 cod. 16).

Green (RAL 6024 cod. 17).

Black (RAL 9011 cod. 01).

### Locking piston kit:

(1) PA6+GF hole cover ring. Colour Black (RAL 9011). Push-fit assembly. Removable.

(2) PA6+GF piston holder. Colour Black (RAL 9011). Assembly with two self-tapping, galvanised steel screws, screwdriver head (TC) 3.5x30.

(3) PA6+GF gear stick d. 26 with positioning brackets. Colour Black (RAL 9011). With M04 brass female threaded insert.

(5) PA6+GF gear stick support with positioner. Colour Black (RAL 9011).

(6) Galvanised steel return spring.

(7) Galvanised steel washer.

(8) Galvanised steel locking piston. Seat for Allen wrench no. 5 for fastening. Piston stroke 10 mm. Useful projection from handwheel 8 mm.

### Inserts:

Galvanised steel insert with smooth through bore (tolerance H10).

(4) Black-oxide treated hexagon socket button head screw ISO 7838 for fastening handle.

(9) Hexagonal black-oxide treated steel insert with threaded through hole.

### Lateral handle:

Revolving handle M202 "Euromodel", black RAL 9011. Handle cap in grey polyamide (RAL 7035 code 13).

### Fixing method:

For fixing systems, or execution of keyways or square holes, please refer to the technical notes attached to the catalogue [page 814].

### Special requests:

- Upon request and for a minimum of 50 pieces inserts can be supplied with hole d1 with tolerance H7 and black oxide treated finish. Add letters ZB to the standard code. Example: D602350.TD1001PZB.
- Upon request and for special quantities inserts can be supplied with custom hole diameter d1.
- Upon request and for special quantities inserts can be supplied in different materials/with different coatings.
- Upon request and for special quantities available in the colours indicated in the chart [page 807].



Art.	d1 <sub>H10</sub>	Q	l	dv	hv	h1	dp	hp	DA	HA	DB	F	g
D602350.TD2001H	20	32	55	20	21	8	10	10	131	20	76	38	1800

Dm = Maximum obtainable diameter for subsequent machining. (widening)  
A.R. = Upon request, for a minimum of 50 pieces.

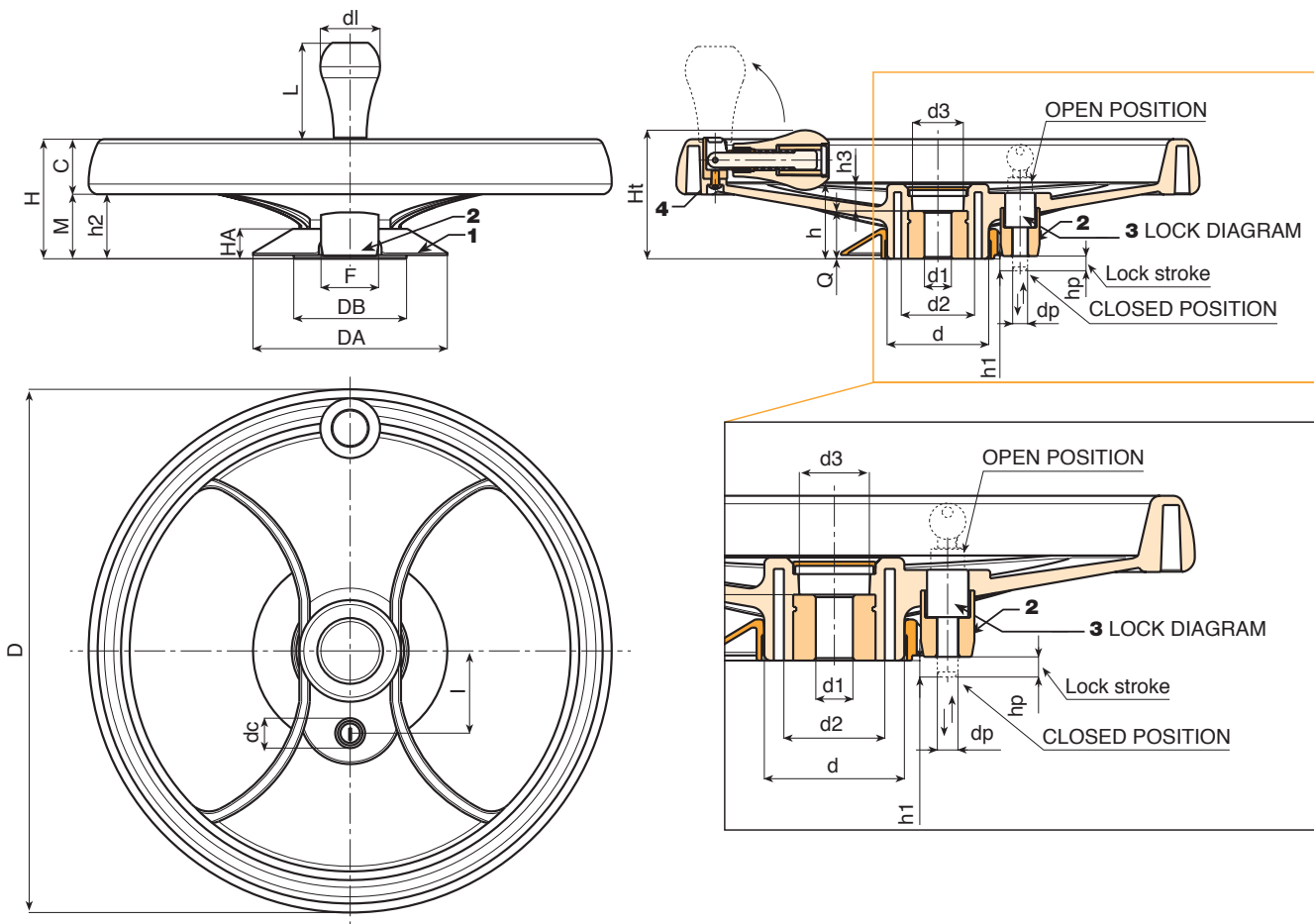


# D603



## TWO-SPOKE HANDWHEEL WITH FOLDAWAY HANDLE AND KEY LOCK

This product type is a variation of our traditional handwheel D207-350. By simply adding a special assembly kit this product adapts to the requirements of a particular market: the mobile shelving market (mobile storage cabinets mounted on a trackway). This handwheel is used to move the shelving along the trackway. A fitted lock or locking piston serves to lock, stop, position the shelving units in certain positions.



Art.	D	H	Ht	h	d	M	C	h2	h3	d2	d3
D603350.TD2001H	346	80	86	49.5	67.5	24	56	43.5	17.5	49	35

Dm = Maximum obtainable diameter for subsequent machining. (widening)  
A.R. = Upon request, for a minimum of 50 pieces.



Stock availability as % (🛒)  
90% (●) - 40% (●) - 5% (●)



# D603



## TWO-SPOKE HANDWHEEL WITH FOLDAWAY HANDLE AND KEY LOCK

### Materials:

Reinforced and stabilized polyamide. Resistant to oils and greases.

### Surface finish:

Satin.

### Colour:

Black (RAL 9011).

### Central cap:

Grey polyamide (RAL 7035 code 13).

### Alternative cap colours:

Orange (RAL 2004 cod. 02).

Blue (RAL 5015 cod. 07).

Yellow (RAL 1021 cod. 10).

Red (RAL 3000 cod. 16).

Green (RAL 6024 cod. 17).

Black (RAL 9011 cod. 01).

### Clamping lock kit:

(1) PA6+GF hole cover ring. Colour Black (RAL 9011). Push-fit assembly. Removable.

(2) PA6+GF piston holder. Colour Black (RAL 9011). Assembly with two self-tapping, galvanised steel screws, screwdriver head (TC) 3.5x30.

(3) Nickel plated lock. Two numbered keys provided. Key can be removed from either position. To close the handwheel push and turn the key by 90°. Lock stroke 10 mm. Useful projection of pin from handwheel 8 mm. Keys supplied secured to the handwheel rim.

### Inserts:

Galvanised steel insert with smooth through bore (tolerance H10).

(4) Black-oxide treated hexagon socket button head screw ISO 7838 for fastening handle.

### Lateral handle:

Flush, foldaway revolving handle in handwheel M202 "Euromodel", with hexagonal connection. PA6+GF handle, black RAL 9011.

Black-oxide treated internal mechanism. Fixed with black-oxide treated hexagon socket button head screw ISO 7838. Handle cap in grey polyamide (RAL 7035 code 13).

### Fixing method:

For fixing systems, or execution of keyways or square holes, please refer to the technical notes attached to the catalogue [page 814].

### Special requests:

- Upon request and for a minimum of 50 pieces inserts can be supplied with hole d1 with tolerance H7 and black oxide treated finish. Add letters ZB to the standard code. Example: D603350.TD1001PZB.
- Upon request and for special quantities inserts can be supplied with custom hole diameter d1.
- Upon request and for special quantities inserts can be supplied in different materials/with different coatings.
- Upon request and for special quantities available in the colours indicated in the chart [page 807].



Art.	Dm	d1 <sub>H10</sub>	Q	l	dc	h1	dp	hp	DA	HA	DB	F	g
D603350.TD2001H	28	20	32	55	20	8	10	10	131	20	76	38	1800

Dm = Maximum obtainable diameter for subsequent machining. (widening)

A.R. = Upon request, for a minimum of 50 pieces.

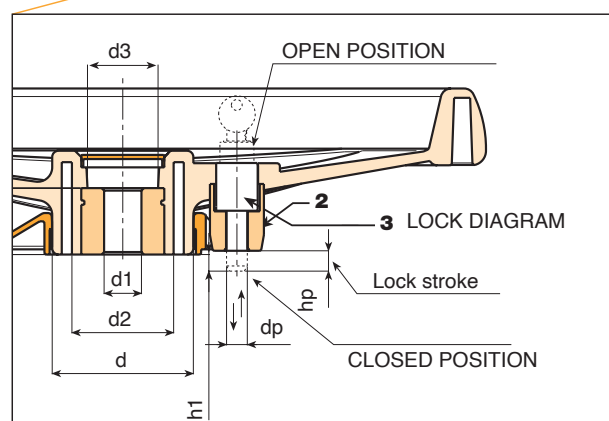
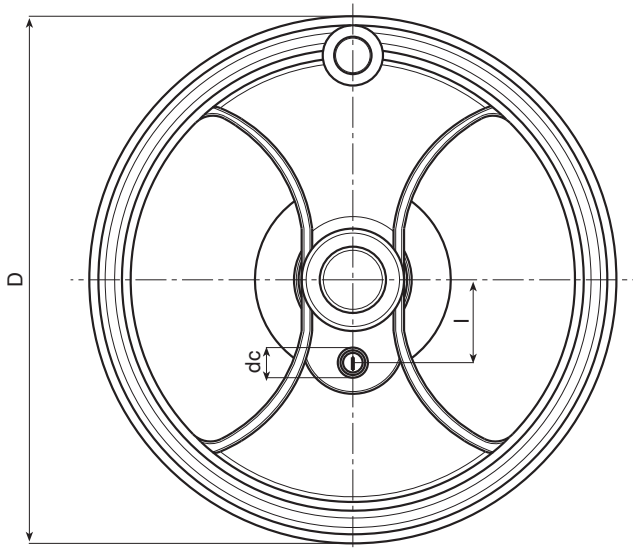
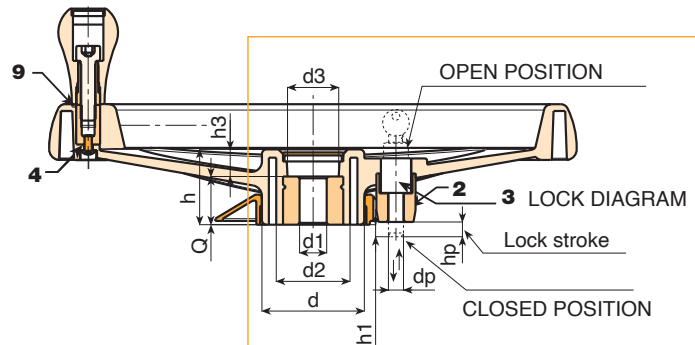
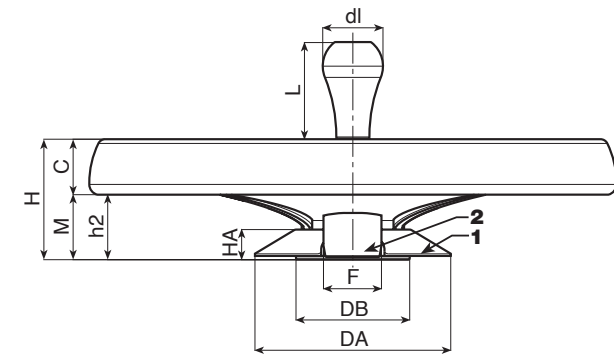


# D604



## TWO-SPOKE HANDWHEEL WITH REVOLVING HANDLE AND KEY LOCK

This product type is a variation of our traditional handwheel D207-350. By simply adding a special assembly kit this product adapts to the requirements of a particular market: the mobile shelving market (mobile storage cabinets mounted on a trackway). This handwheel is used to move the shelving along the trackway. A fitted lock or locking piston serves to lock, stop, position the shelving units in certain positions.



Art.	D	H	Ht	h	d	M	C	h2	h3	d2	d3	Dm
D604350.TD2001H	346	80	86	49.5	67.5	24	56	43.5	17.5	49	35	28

Dm = Maximum obtainable diameter for subsequent machining. (widening)  
A.R. = Upon request, for a minimum of 50 pieces.



Stock availability as % (🛒)  
90% (●) - 40% (●) - 5% (●)

# D604



## TWO-SPOKE HANDWHEEL WITH REVOLVING HANDLE AND KEY LOCK

### Materials:

Reinforced and stabilized polyamide. Resistant to oils and greases.

### Surface finish:

Satin.

### Colour:

Black (RAL 9011).

### Central cap:

Grey polyamide (RAL 7035 code 13).

### Alternative cap colours:

Orange (RAL 2004 cod. 02).

Blue (RAL 5015 cod. 07).

Yellow (RAL 1021 cod. 10).

Red (RAL 3000 cod. 16).

Green (RAL 6024 cod. 17).

Black (RAL 9011 cod. 01).



### Clamping lock kit:

(1) PA6+GF hole cover ring. Colour Black (RAL 9011). Push-fit assembly. Removable.

(2) PA6+GF piston holder. Colour Black (RAL 9011). Assembly with two self-tapping, galvanised steel screws, screwdriver head (TC) 3.5x30.

(3) Nickel plated lock. Two numbered keys provided. Key can be removed from either position. To close the handwheel push and turn the key by 90°. Lock stroke 10 mm. Useful projection of pin from handwheel 8 mm. Keys supplied secured to the handwheel rim.

### Inserts:

Galvanised steel insert with smooth through bore (tolerance H10).

(4) Black-oxide treated hexagon socket button head screw ISO 7838 for fastening handle.

(9) Hexagonal black-oxide treated steel insert with threaded through hole.



### Lateral handle:

Revolving handle M202 "Euromodel", black RAL 9011.

Handle cap in grey polyamide (RAL 7035 code 13).

### Fixing method:

For fixing systems, or execution of keyways or square holes, please refer to the technical notes attached to the catalogue [page 814].



### Special requests:

- Upon request and for a minimum of 50 pieces inserts can be supplied with hole d1 with tolerance H7 and black oxide treated finish. Add letters ZB to the standard code. Example: D604350.TD1001PZB.
- Upon request and for special quantities inserts can be supplied with custom hole diameter d1.
- Upon request and for special quantities inserts can be supplied in different materials/with different coatings.
- Upon request and for special quantities available in the colours indicated in the chart [page 807].



Art.	d1 <sub>H10</sub>	Q	l	dc	h1	dp	hp	DA	HA	DB	F	g
D604350.TD2001H	20	32	55	20	8	10	10	131	20	76	38	1800

Dm = Maximum obtainable diameter for subsequent machining. (widening)

A.R. = Upon request, for a minimum of 50 pieces.



Stock availability as % (🛒)  
90% (●) - 40% (●) - 5% (●)

# D454

## "EUROMODEL" FOUR-ARMS CONTROL HANDWHEEL



MODELLO DEPOSITATO

### Materials:

Special technopolymer reinforced with high-strength glass fiber.  
Resistant to oils and greases.

### Surface finish:

Satin.

### Colour:

Black (RAL 9011).

### Central cap:

Grey polyamide (RAL 7035 code 13).

### Alternative cap colours:

Orange (RAL 2004 cod. 02).

Blue (RAL 5015 cod. 07).

Yellow (RAL 1021 cod. 10).

Red (RAL 3000 cod. 16).

Green (RAL 6024 cod. 17).

Black (RAL 9011 cod. 01).

### Main insert:

Galvanised steel insert with smooth through bore (tolerance H10).

### Hub:

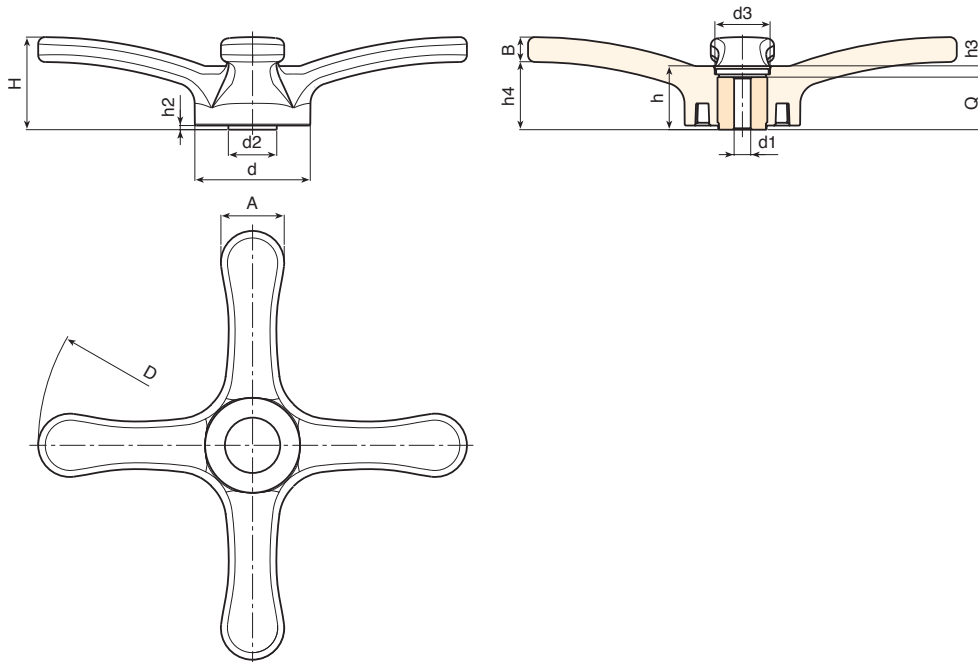
Lightweight hub.

### Fixing method:

For fixing systems, or execution of keyways or square holes, please refer to the technical notes attached to the catalogue [page 814].

### Special requests:

- Upon request and for a minimum of 50 pieces inserts can be supplied with hole d1 with tolerance H7 and black oxide treated finish. Add letters ZB to the standard code. Example: D454310.TD1701PZB.
- Upon request and for special quantities inserts can be supplied with custom hole diameter d1.
- Upon request and for special quantities inserts can be supplied with custom threaded hole d1.
- Upon request and for special quantities inserts can be supplied in different materials/with different coatings.



Art.	D	H	h	d	d2	A	B	h2	h3	h4	d3	Dm	d1H10	Q	g
D454310.TD0801P	308	66	45.5	83	35.5	45.5	20	3	7.5	46	34	26	08	38	900

Attention: For a minimum of 50 pieces the diameter d1 can be customised (hole tolerance H10 galvanised and H7 black-oxide treated).  
Dm = Maximum obtainable diameter for subsequent machining (widening).



Stock availability as % (🛒)  
90% (●) - 40% (●) - 5% (●)

# D214



## THREE-ARM CONTROL HANDWHEEL WITH SMOOTH OR THREADED HOLE

### Materials:

Reinforced and stabilized polyamide.  
Resistant to oils and greases.

### Surface finish:

Satin.

### Colour:

Black (RAL 9011).

### Central cap:

Grey polyamide (RAL 7035 code 13).

### Alternative cap colours:

Orange (RAL 2004 cod. 02).  
Blue (RAL 5015 cod. 07).  
Yellow (RAL 1021 cod. 10).  
Red (RAL 3000 cod. 16).  
Green (RAL 6024 cod. 17).  
Black (RAL 9011 cod. 01).

### Main insert:

#### Version TD:

Galvanised steel insert with smooth through bore (tolerance H10).

#### Version TM:

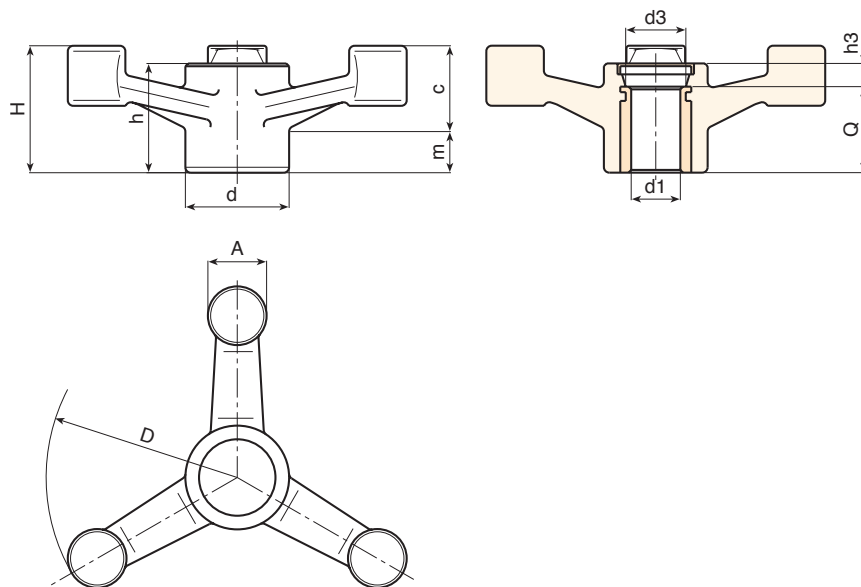
Galvanised steel insert with threaded through hole (thread tolerance 6H).

### Fixing method:

For fixing systems, or execution of keyways or square holes, please refer to the technical notes attached to the catalogue [page 814].

### Special requests:

- Upon request and for a minimum of 50 pieces inserts can be supplied with hole d1 with tolerance H7 and black oxide treated finish. Add letters ZB to the standard code. Example: D214140.TD1301PZB.
- Upon request and for special quantities inserts can be supplied with custom hole diameter d1.
- Upon request and for special quantities the handwheel can be supplied in Orange (RAL 2004 Code 02).
- Upon request and for special quantities inserts can be supplied in different materials/with different coatings.



### Version TD with insert and smooth through bore (tolerance H10).

🛒	Art.	D	H	h	d	m	c	A	h3	d3	Dm	d1 <sub>H10</sub>	Q	📦
●	D214140.TD0801P	137	45	39.5	38	19	26	22	7.5	26	22	8	32	200
●	D214140.TD1201P	137	45	39.5	38	19	26	22	7.5	26	22	12	32	196
●	D214180.TD0801P	177	56	42.5	38	20	35	23	10.5	26	22	8	32	280
●	D214220.TD0801P	221	61	46	38	22	39	25	14	26	22	8	32	340
●	D214220.TD1801P	221	61	46	38	22	39	25	14	26	22	18	32	325

Attention: For a minimum of 50 pieces the diameter d1 can be customised (hole tolerance H10 galvanised and H7 black-oxide treated).  
Dm = Maximum obtainable diameter for subsequent machining (widening).

### Version TM with insert and threaded through hole.

🛒	Art.	D	H	h	d	m	c	A	h3	d3	d1 <sub>6H</sub>	Q	📦
●	D214140.TM1201P	137	45	39.5	38	19	26	22	7.5	26	M12	32	197
●	D214140.TM1601P	137	45	39.5	38	19	26	22	7.5	26	M16	32	193
●	D214180.TM1601P	177	56	42.5	38	20	35	23	10.5	26	M16	32	275
●	D214180.TM1801P	177	56	42.5	38	20	35	23	10.5	26	M18	32	270
●	D214220.TM1401P	221	61	46	38	22	39	25	14	26	M14	32	335
●	D214220.TM1601P	221	61	46	38	22	39	25	14	26	M16	32	333
●	D214220.TM1801P	221	61	46	38	22	39	25	14	26	M18	32	330

Attention: for a minimum of 50 pieces the diameter d1 can be produced with the requested dimensions.



Stock availability as % (🛒)  
90% (●) - 40% (●) - 5% (●)

# D779



## LIGHTWEIGHT CONTROL HANDWHEEL WITH REVOLVING HANDLE

### Materials:

Reinforced polyamide.  
Resistant to oils and greases.

### Surface finish:

Satin.

### Colour:

Black (RAL 9011).

### Main insert:

Galvanised steel insert with smooth through bore (tolerance H10).

### Lateral insert:

Brass insert with threaded through hole.

### Lateral handle:

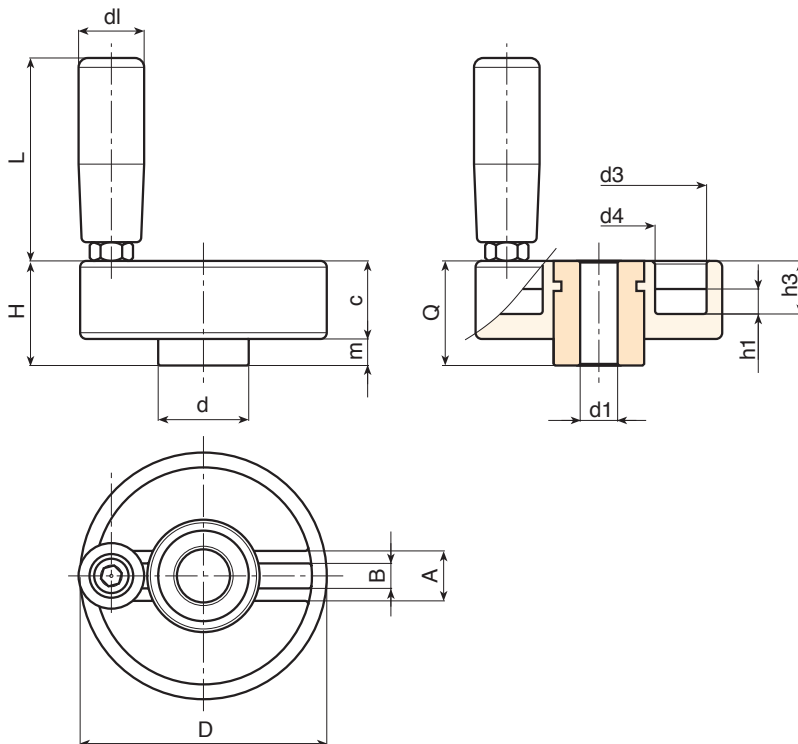
Revolving handle art. M144 [page 400].

### Fixing method:

For fixing systems, or execution of keyways or square holes, please refer to the technical notes attached to the catalogue [page 814].

### Special requests:

- Upon request and for a minimum of 50 pieces inserts can be supplied with hole  $d1$  with tolerance H7 and black oxide treated finish. Add letters ZB to the standard code. Example: D77980.TD1101PZB.
- Upon request and for special quantities inserts can be supplied with custom hole diameter  $d1$ .
- Upon request and for special quantities inserts can be supplied in different materials/with different coatings.
- Upon request and for special quantities available in the colours indicated in the chart [page 807].



Art.	D	H	d	c	m	h1	h3	A	B	d3	d4	d1	L	Dm	d1H10	Q	g
● D77980.TP0501P	80	34	29	25	9	8	17	16	7.5	69	36	21	65	20	8	34	285
● D77980.TD1201P	80	34	29	25	9	8	17	16	7.5	69	36	21	65	20	12	34	279

Attention: For a minimum of 50 pieces the diameter  $d1$  can be customised (hole tolerance H10 galvanised and H7 black-oxide treated).  
Dm = Maximum obtainable diameter for subsequent machining (widening).



Stock availability as % (🛒)  
90% (●) - 40% (●) - 5% (●)

# D782

## LIGHTWEIGHT CONTROL HANDWHEEL



### Materials:

Reinforced polyamide.  
Resistant to oils and greases.

### Surface finish:

Satin.

### Colour:

Black (RAL 9011).

### Main insert:

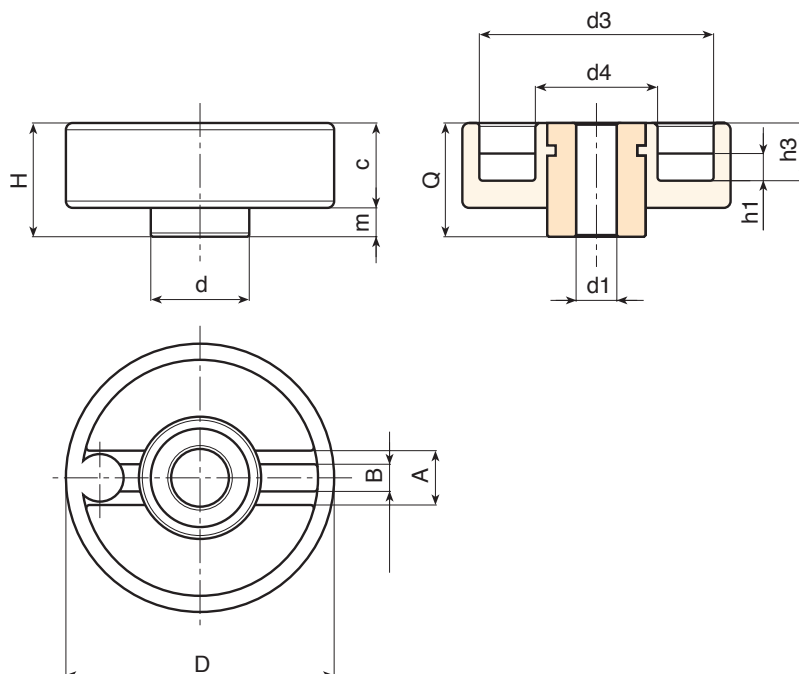
Galvanised steel insert with smooth through bore (tolerance H10).

### Fixing method:

For fixing systems, or execution of keyways or square holes, please refer to the technical notes attached to the catalogue [page 814].

### Special requests:

- Upon request and for a minimum of 50 pieces inserts can be supplied with hole  $d_1$  with tolerance H7 and black oxide treated finish. Add letters ZB to the standard code. Example: D78280.TD1101PZB.
- Upon request and for special quantities inserts can be supplied with custom hole diameter  $d_1$ .
- Upon request and for special quantities inserts can be supplied in different materials/with different coatings.
- Upon request and for special quantities available in the colours indicated in the chart [page 807].



Art.	D	H	d	c	m	h1	h3	A	B	d3	d4	Dm	d1 <sub>H10</sub>	Q	g
D78280.TD0801P	80	34	29	25	9	8	17	16	7.5	69	36	20	8	34	230

Attention: For a minimum of 50 pieces the diameter  $d_1$  can be customised (hole tolerance H10 galvanised and H7 black-oxide treated).  
Dm = Maximum obtainable diameter for subsequent machining (widening).



THE WINDS HAVE  
CHANGED:  
**VALUE** IS MUCH MORE  
ACHIEVABLE NOW



**BOTECO**<sup>®</sup>