



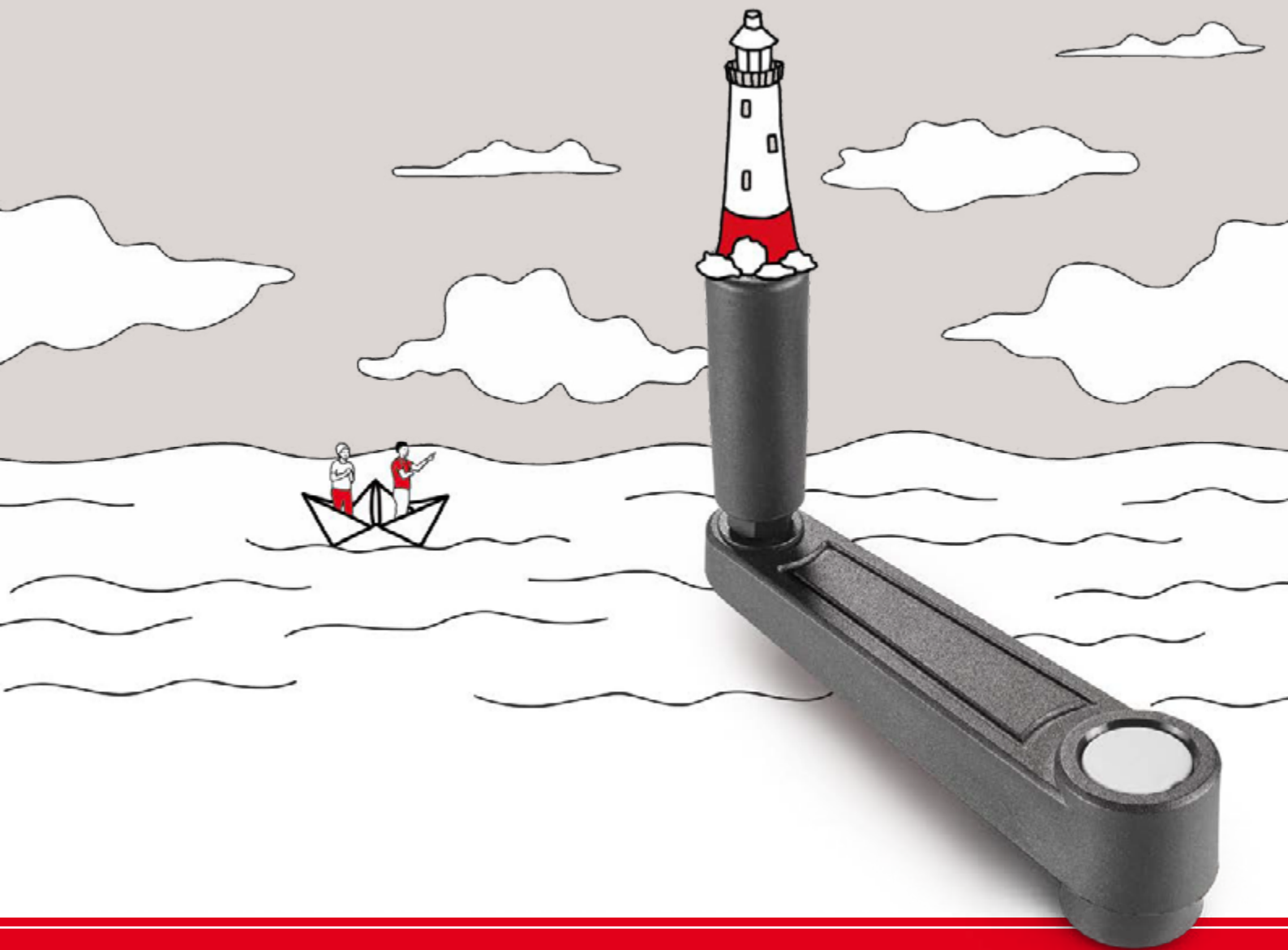
BOTECO®

YOUR MECHANICAL COMPONENT

GROUP - E

FIXED AND INDEXED CRANK HANDLES





*It's easy to set a course for **QUALITY** when
you have a reliable reference point.*



BOTECO®

E218



PA6
+G.F.

UL94
HB



CRANK HANDLE WITH THREADED INSERT AND FOLDING HANDLE

Material:

Reinforced polyamide.
Resistant to oils and greases.

Surface finish:

Satin.

Colour:

Black (RAL 9011).

Central cap:

Grey polyamide (RAL 7035 code 13).

Alternative Cap colours:

Orange (RAL 2004 cod. 02).
Red (RAL 3000 cod. 16).
Blue (RAL 5015 cod. 07).
Green (RAL 6024 cod. 17).
Yellow (RAL 1021 cod. 10).
Black (RAL 9011 cod. 01).

Inserts:

Brass insert with female threaded hole (thread tolerance 6H).
(*) Galvanised steel insert with female threaded hole (thread tolerance 6H).

Lateral insert:

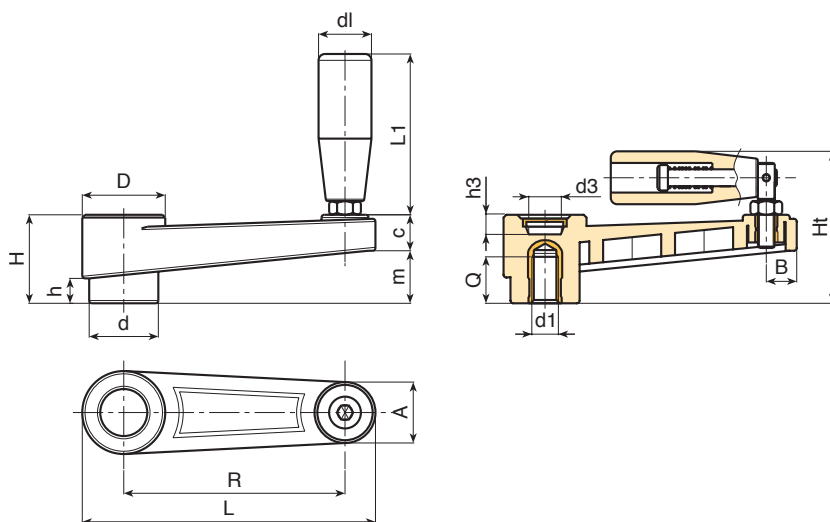
Brass insert with threaded through hole.

Lateral handle:

Revolving, folding handle art. M136 [page 405].

Special requests:

- Upon request and for special quantities inserts can be supplied in different materials.
- Upon request and for special quantities available in the colours indicated in the chart [page 807].



| 🛒 | Art. | L | R | H | Ht | D | d | m | c | A | B | h | d3 | h3 | d1 _{6H} | Q | dl | L1 | 📦 |
|---|----------------|-----|-----|----|------|----|----|----|------|------|------|------|----|----|------------------|----|----|----|-----|
| ● | E218065.TM0801 | 88 | 65 | 30 | 54 | 27 | 22 | 17 | 13 | 18 | 9.5 | 8 | 14 | 10 | M8 | 15 | 20 | 54 | 78 |
| ● | E218065.TM1001 | 88 | 65 | 30 | 54 | 27 | 22 | 17 | 13 | 18 | 9.5 | 8 | 14 | 10 | M10 | 15 | 20 | 54 | 78 |
| ● | E218065.TM1201 | 88 | 65 | 30 | 54 | 27 | 22 | 17 | 13 | 18 | 9.5 | 8 | 14 | 10 | M12 | 18 | 20 | 54 | 83 |
| ● | E218080.TM0801 | 106 | 80 | 33 | 57 | 30 | 26 | 19 | 13 | 21.5 | 11 | 9 | 18 | 9 | M8 | 18 | 20 | 54 | 94 |
| ● | E218080.TM1001 | 106 | 80 | 33 | 57 | 30 | 26 | 19 | 13 | 21.5 | 11 | 9 | 18 | 9 | M10 | 18 | 20 | 54 | 95 |
| ● | E218080.TM1201 | 106 | 80 | 33 | 57 | 30 | 26 | 19 | 13 | 21.5 | 11 | 9 | 18 | 9 | M12 | 18 | 20 | 54 | 100 |
| ● | E218110.TM1001 | 138 | 110 | 39 | 67.5 | 33 | 29 | 25 | 14 | 22 | 12 | 11 | 18 | 11 | M10 | 16 | 25 | 75 | 156 |
| ● | E218110.TM1201 | 138 | 110 | 39 | 67.5 | 33 | 29 | 25 | 14 | 22 | 12 | 11 | 18 | 11 | M12 | 18 | 25 | 75 | 156 |
| ● | E218110.TM1401 | 138 | 110 | 39 | 67.5 | 33 | 29 | 25 | 14 | 22 | 12 | 11 | 18 | 11 | M14 | 18 | 25 | 75 | 156 |
| ● | E218140.TM1001 | 174 | 140 | 49 | 82 | 41 | 35 | 33 | 16 | 25.5 | 13.5 | 15 | 22 | 19 | M12 | 19 | 26 | 89 | 274 |
| ● | E218140.TM1401 | 174 | 140 | 49 | 82 | 41 | 35 | 33 | 16 | 25.5 | 13.5 | 15 | 22 | 19 | M14 | 18 | 26 | 89 | 283 |
| ● | E218140.TM1601 | 174 | 140 | 49 | 82 | 41 | 35 | 33 | 16 | 25.5 | 13.5 | 15 | 22 | 19 | M16(*) | 18 | 26 | 89 | 290 |
| ● | E218185.TM1201 | 220 | 185 | 55 | 88 | 45 | 40 | 40 | 16.5 | 26.5 | 14 | 16.5 | 28 | 21 | M12 | 17 | 26 | 97 | 340 |
| ● | E218185.TM1401 | 220 | 185 | 55 | 88 | 45 | 40 | 40 | 16.5 | 26.5 | 14 | 16.5 | 28 | 21 | M14 | 19 | 26 | 97 | 345 |
| ● | E218185.TM1601 | 220 | 185 | 55 | 88 | 45 | 40 | 40 | 16.5 | 26.5 | 14 | 16.5 | 28 | 21 | M16(*) | 18 | 26 | 97 | 360 |



E215



CRANK HANDLE WITH THREADED INSERT AND REVOLVING HANDLE

Material:

Reinforced polyamide.
Resistant to oils and greases.

Surface finish:

Satin.

Colour:

Black (RAL 9011).

Central cap:

Grey polyamide (RAL 7035 code 13).

Alternative Cap colours:

Orange (RAL 2004 cod. 02).
Red (RAL 3000 cod. 16).
Blue (RAL 5015 cod. 07).
Green (RAL 6024 cod. 17).
Yellow (RAL 1021 cod. 10).
Black (RAL 9011 cod. 01).

Inserts:

Brass insert with female threaded hole
(thread tolerance 6H).

(*) Galvanised steel insert with female
threaded hole (thread tolerance 6H).

Lateral insert:

Brass insert with threaded through hole.

Lateral handle:

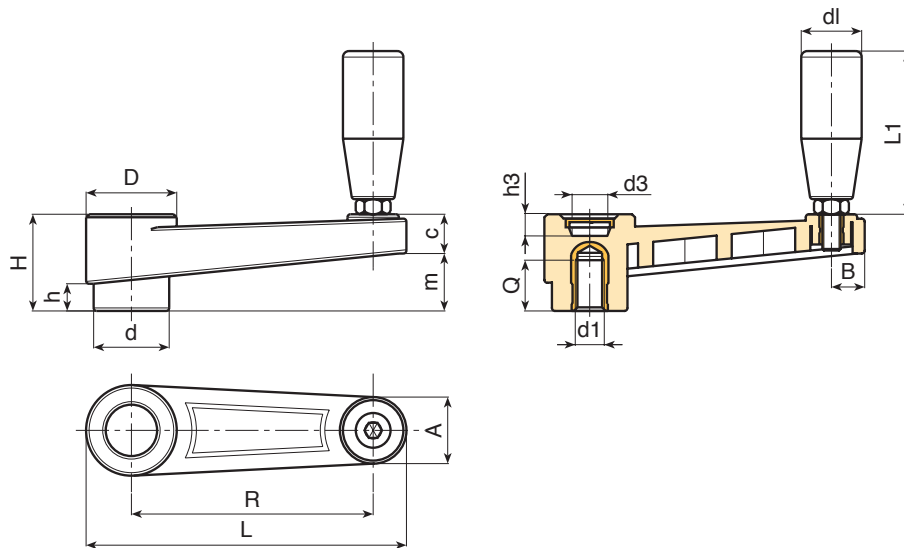
E215: Revolving handle art. M144 page (400).

E219: Revolving handle art. M129 page (401).

E220: Revolving handle art. M145 page (404).

Special requests:

- Upon request and for special quantities inserts can be supplied in different materials.
- Upon request and for special quantities available in the colours indicated in the chart [page 807].



| Art. | L | R | H | D | d | m | c | A | B | h | d3 | h3 | d1 _{6H} | Q | d1 | L1 | g |
|----------------|-----|-----|----|----|----|----|------|------|------|------|----|----|------------------|----|----|----|-----|
| E215065.TM0801 | 88 | 65 | 30 | 27 | 22 | 17 | 13 | 18 | 9.5 | 8 | 14 | 10 | M8 | 15 | 20 | 56 | 67 |
| E215065.TM1001 | 88 | 65 | 30 | 27 | 22 | 17 | 13 | 18 | 9.5 | 8 | 14 | 10 | M10 | 15 | 20 | 56 | 70 |
| E215065.TM1201 | 88 | 65 | 30 | 27 | 22 | 17 | 13 | 18 | 9.5 | 8 | 14 | 10 | M12 | 18 | 20 | 56 | 73 |
| E215080.TM0801 | 106 | 80 | 33 | 30 | 26 | 19 | 13 | 21.5 | 11 | 9 | 18 | 9 | M8 | 18 | 20 | 56 | 83 |
| E215080.TM1001 | 106 | 80 | 33 | 30 | 26 | 19 | 13 | 21.5 | 11 | 9 | 18 | 9 | M10 | 18 | 20 | 56 | 87 |
| E215080.TM1201 | 106 | 80 | 33 | 30 | 26 | 19 | 13 | 21.5 | 11 | 9 | 18 | 9 | M12 | 18 | 20 | 56 | 90 |
| E215110.TM1001 | 138 | 110 | 39 | 33 | 29 | 25 | 14 | 22 | 12 | 11 | 18 | 11 | M10 | 14 | 21 | 65 | 135 |
| E215110.TM1201 | 138 | 110 | 39 | 33 | 29 | 25 | 14 | 22 | 12 | 11 | 18 | 11 | M12 | 18 | 21 | 65 | 137 |
| E215110.TM1401 | 138 | 110 | 39 | 33 | 29 | 25 | 14 | 22 | 12 | 11 | 18 | 11 | M14 | 18 | 21 | 65 | 140 |
| E215140.TM1201 | 174 | 140 | 49 | 41 | 35 | 33 | 16 | 25.5 | 13.5 | 15 | 22 | 19 | M12 | 19 | 23 | 76 | 238 |
| E215140.TM1401 | 174 | 140 | 49 | 41 | 35 | 33 | 16 | 25.5 | 13.5 | 15 | 22 | 19 | M14 | 18 | 23 | 76 | 223 |
| E215140.TM1601 | 174 | 140 | 49 | 41 | 35 | 33 | 16 | 25.5 | 13.5 | 15 | 22 | 19 | (*)M16 | 18 | 23 | 76 | 251 |
| E215185.TM1201 | 220 | 185 | 55 | 45 | 40 | 40 | 16.5 | 26.5 | 14 | 16.5 | 28 | 21 | M12 | 17 | 25 | 86 | 312 |
| E215185.TM1401 | 220 | 185 | 55 | 45 | 40 | 40 | 16.5 | 26.5 | 14 | 16.5 | 28 | 21 | M14 | 19 | 25 | 86 | 320 |
| E215185.TM1601 | 220 | 185 | 55 | 45 | 40 | 40 | 16.5 | 26.5 | 14 | 16.5 | 28 | 21 | (*)M16 | 18 | 25 | 86 | 331 |



Stock availability as % (🛒)
90% (●) - 40% (●) - 5% (●)

E219



PA6
+G.F.

UL94
HB



CRANK HANDLE WITH THREADED INSERT AND REVOLVING HANDLE

M129

General features:

All unspecified features are identical to basic item E215.

Inserts:

Brass insert with female threaded hole (thread tolerance 6H).

(*) Galvanised steel insert with female threaded hole (thread tolerance 6H).

Lateral handle:

Revolving handle art. M129 page (401).



| 🛒 | Art. | L | R | H | D | d | m | c | A | B | h | d3 | h3 | d16H | Q | dl | L1 | g |
|---|----------------|-----|-----|----|----|----|----|------|------|------|------|----|----|--------|----|----|----|-----|
| ● | E219065.TM0801 | 88 | 65 | 30 | 27 | 22 | 17 | 13 | 18 | 9.5 | 8 | 14 | 10 | M8 | 15 | 20 | 52 | 79 |
| ● | E219065.TM1001 | 88 | 65 | 30 | 27 | 22 | 17 | 13 | 18 | 9.5 | 8 | 14 | 10 | M10 | 15 | 20 | 52 | 82 |
| ● | E219065.TM1201 | 88 | 65 | 30 | 27 | 22 | 17 | 13 | 18 | 9.5 | 8 | 14 | 10 | M12 | 18 | 20 | 52 | 85 |
| ● | E219080.TM0801 | 106 | 80 | 33 | 30 | 26 | 19 | 13 | 21.5 | 11 | 9 | 18 | 9 | M8 | 18 | 20 | 52 | 95 |
| ● | E219080.TM1001 | 106 | 80 | 33 | 30 | 26 | 19 | 13 | 21.5 | 11 | 9 | 18 | 9 | M10 | 18 | 20 | 52 | 99 |
| ● | E219080.TM1201 | 106 | 80 | 33 | 30 | 26 | 19 | 13 | 21.5 | 11 | 9 | 18 | 9 | M12 | 18 | 20 | 52 | 102 |
| ● | E219110.TM1001 | 138 | 110 | 39 | 33 | 29 | 25 | 14 | 22 | 12 | 11 | 18 | 11 | M10 | 14 | 23 | 62 | 150 |
| ● | E219110.TM1201 | 138 | 110 | 39 | 33 | 29 | 25 | 14 | 22 | 12 | 11 | 18 | 11 | M12 | 18 | 23 | 62 | 160 |
| ● | E219110.TM1401 | 138 | 110 | 39 | 33 | 29 | 25 | 14 | 22 | 12 | 11 | 18 | 11 | M14 | 18 | 23 | 62 | 165 |
| ● | E219140.TM1201 | 174 | 140 | 49 | 41 | 35 | 33 | 16 | 25.5 | 13.5 | 15 | 22 | 19 | M12 | 19 | 25 | 72 | 262 |
| ● | E219140.TM1401 | 174 | 140 | 49 | 41 | 35 | 33 | 16 | 25.5 | 13.5 | 15 | 22 | 19 | M14 | 18 | 25 | 72 | 249 |
| ● | E219140.TM1601 | 174 | 140 | 49 | 41 | 35 | 33 | 16 | 25.5 | 13.5 | 15 | 22 | 19 | (*)M16 | 18 | 25 | 72 | 275 |
| ● | E219185.TM1201 | 220 | 185 | 55 | 45 | 40 | 40 | 16.5 | 26.5 | 14 | 16.5 | 28 | 21 | M12 | 17 | 25 | 82 | 312 |
| ● | E219185.TM1401 | 220 | 185 | 55 | 45 | 40 | 40 | 16.5 | 26.5 | 14 | 16.5 | 28 | 21 | M14 | 19 | 25 | 82 | 320 |
| ● | E219185.TM1601 | 220 | 185 | 55 | 45 | 40 | 40 | 16.5 | 26.5 | 14 | 16.5 | 28 | 21 | (*)M16 | 18 | 25 | 82 | 331 |

E220



PA6
+G.F.

UL94
HB



CRANK HANDLE WITH THREADED INSERT AND REVOLVING HANDLE

M145

General features:

All unspecified features are identical to basic item E215.

Inserts:

Brass insert with female threaded hole (thread tolerance 6H).

(*) Galvanised steel insert with female threaded hole (thread tolerance 6H).

Lateral handle:

Revolving handle art. M145 page page (404).



| 🛒 | Art. | L | R | H | D | d | m | c | A | B | h | d3 | h3 | d16H | Q | dl | L1 | g |
|---|----------------|-----|-----|----|----|----|----|------|------|------|------|----|----|--------|----|----|----|-----|
| ● | E220065.TM0801 | 88 | 65 | 30 | 27 | 22 | 17 | 13 | 18 | 9.5 | 8 | 14 | 10 | M8 | 15 | 20 | 56 | 69 |
| ● | E220065.TM1001 | 88 | 65 | 30 | 27 | 22 | 17 | 13 | 18 | 9.5 | 8 | 14 | 10 | M10 | 15 | 20 | 56 | 72 |
| ● | E220065.TM1201 | 88 | 65 | 30 | 27 | 22 | 17 | 13 | 18 | 9.5 | 8 | 14 | 10 | M12 | 18 | 20 | 56 | 75 |
| ● | E220080.TM0801 | 106 | 80 | 33 | 30 | 26 | 19 | 13 | 21.5 | 11 | 9 | 18 | 9 | M8 | 18 | 20 | 56 | 85 |
| ● | E220080.TM1001 | 106 | 80 | 33 | 30 | 26 | 19 | 13 | 21.5 | 11 | 9 | 18 | 9 | M10 | 18 | 20 | 56 | 89 |
| ● | E220080.TM1201 | 106 | 80 | 33 | 30 | 26 | 19 | 13 | 21.5 | 11 | 9 | 18 | 9 | M12 | 18 | 20 | 56 | 92 |
| ● | E220110.TM1001 | 138 | 110 | 39 | 33 | 29 | 25 | 14 | 22 | 12 | 11 | 18 | 11 | M10 | 14 | 23 | 66 | 149 |
| ● | E220110.TM1201 | 138 | 110 | 39 | 33 | 29 | 25 | 14 | 22 | 12 | 11 | 18 | 11 | M12 | 18 | 23 | 66 | 151 |
| ● | E220110.TM1401 | 138 | 110 | 39 | 33 | 29 | 25 | 14 | 22 | 12 | 11 | 18 | 11 | M14 | 18 | 23 | 66 | 154 |
| ● | E220140.TM1201 | 174 | 140 | 49 | 41 | 35 | 33 | 16 | 25.5 | 13.5 | 15 | 22 | 19 | M12 | 19 | 25 | 77 | 228 |
| ● | E220140.TM1401 | 174 | 140 | 49 | 41 | 35 | 33 | 16 | 25.5 | 13.5 | 15 | 22 | 19 | M14 | 18 | 25 | 77 | 213 |
| ● | E220140.TM1601 | 174 | 140 | 49 | 41 | 35 | 33 | 16 | 25.5 | 13.5 | 15 | 22 | 19 | (*)M16 | 18 | 25 | 77 | 241 |
| ● | E220185.TM1201 | 220 | 185 | 55 | 45 | 40 | 40 | 16.5 | 26.5 | 14 | 16.5 | 28 | 21 | M12 | 17 | 25 | 87 | 304 |
| ● | E220185.TM1401 | 220 | 185 | 55 | 45 | 40 | 40 | 16.5 | 26.5 | 14 | 16.5 | 28 | 21 | M14 | 19 | 25 | 87 | 310 |
| ● | E220185.TM1601 | 220 | 185 | 55 | 45 | 40 | 40 | 16.5 | 26.5 | 14 | 16.5 | 28 | 21 | (*)M16 | 18 | 25 | 87 | 321 |

E216



CRANK HANDLE WITH SMOOTH BORE INSERT AND REVOLVING HANDLE

Material:

Reinforced polyamide.
Resistant to oils and greases.

Surface finish:

Satin.

Colour:

Black (RAL 9011).

Central cap:

Grey polyamide (RAL 7035 code 13).

Alternative Cap colours:

Orange (RAL 2004 cod. 02).
Red (RAL 3000 cod. 16).
Blue (RAL 5015 cod. 07).
Green (RAL 6024 cod. 17).
Yellow (RAL 1021 cod. 10).
Black (RAL 9011 cod. 01).

Inserts:

Galvanised steel insert with smooth through bore (tolerance H10).

Lateral insert:

Brass insert with threaded through hole.

Lateral handle:

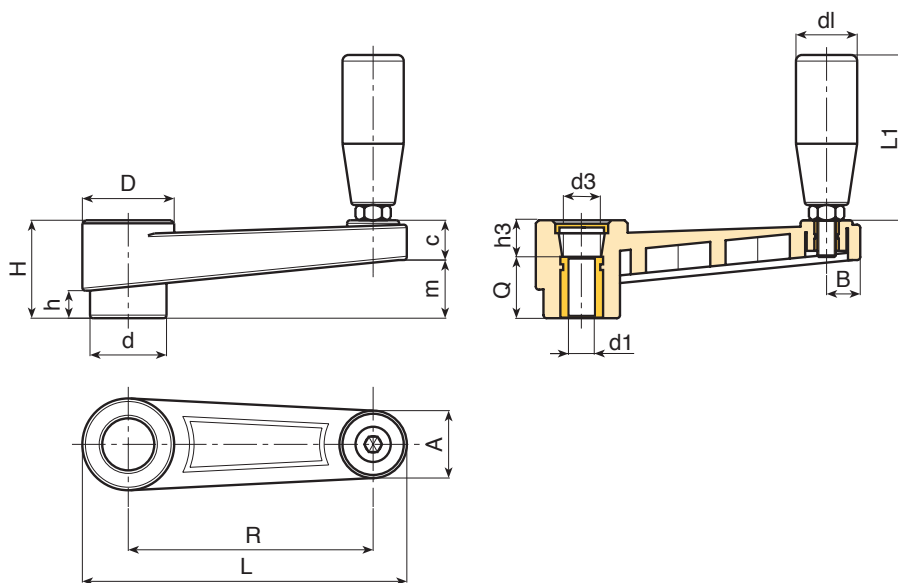
E216: Revolving handle art. M144 page (400).

E221: Revolving handle art. M145 page (404).

E222: Revolving handle art. M129 page (401).

Special requests:

- Upon request and for special quantities inserts can be supplied with custom hole diameter d1.
- Upon request and for special quantities inserts can be supplied in different materials/with different coatings.
- Upon request and for special quantities available in the colours indicated in the chart [page 807].



| Art. | L | R | H | D | d | m | c | A | B | h | d3 | h3 | dm | d1H10 | Q | d1 | L1 | g |
|----------------|-----|-----|----|----|----|----|------|------|------|------|----|----|----|-------|----|----|----|-----|
| E216065.TP0501 | 88 | 65 | 30 | 27 | 22 | 17 | 13 | 18 | 9.5 | 8 | 14 | 10 | 12 | 05 | 20 | 20 | 56 | 96 |
| E216065.TD1001 | 88 | 65 | 30 | 27 | 22 | 17 | 13 | 18 | 9.5 | 8 | 14 | 10 | 12 | 10 | 20 | 20 | 56 | 92 |
| E216065.TD1201 | 88 | 65 | 30 | 27 | 22 | 17 | 13 | 18 | 9.5 | 8 | 14 | 10 | 12 | 12 | 20 | 20 | 56 | 89 |
| E216080.TP0501 | 106 | 80 | 33 | 30 | 26 | 19 | 13 | 21.5 | 11 | 9 | 18 | 9 | 14 | 05 | 24 | 20 | 56 | 110 |
| E216080.TD1001 | 106 | 80 | 33 | 30 | 26 | 19 | 13 | 21.5 | 11 | 9 | 18 | 9 | 14 | 10 | 24 | 20 | 56 | 105 |
| E216080.TD1201 | 106 | 80 | 33 | 30 | 26 | 19 | 13 | 21.5 | 11 | 9 | 18 | 9 | 14 | 12 | 24 | 20 | 56 | 102 |
| E216110.TD0801 | 138 | 110 | 39 | 33 | 29 | 22 | 14 | 22 | 12 | 11 | 18 | 11 | 14 | 05 | 28 | 21 | 66 | 160 |
| E216110.TD1001 | 138 | 110 | 39 | 33 | 29 | 22 | 14 | 22 | 12 | 11 | 18 | 11 | 14 | 10 | 28 | 21 | 66 | 152 |
| E216110.TD1201 | 138 | 110 | 39 | 33 | 29 | 22 | 14 | 22 | 12 | 11 | 18 | 11 | 14 | 12 | 28 | 21 | 66 | 148 |
| E216140.TD0801 | 174 | 140 | 49 | 41 | 35 | 34 | 16 | 25.5 | 13.5 | 15 | 22 | 19 | 20 | 08 | 30 | 23 | 76 | 250 |
| E216140.TD1201 | 174 | 140 | 49 | 41 | 35 | 34 | 16 | 25.5 | 13.5 | 15 | 22 | 19 | 20 | 12 | 30 | 23 | 76 | 242 |
| E216140.TD1401 | 174 | 140 | 49 | 41 | 35 | 34 | 16 | 25.5 | 13.5 | 15 | 22 | 19 | 20 | 14 | 30 | 23 | 76 | 238 |
| E216140.TD1601 | 174 | 140 | 49 | 41 | 35 | 34 | 16 | 25.5 | 13.5 | 15 | 22 | 19 | 20 | 16 | 30 | 23 | 76 | 232 |
| E216185.TD0801 | 220 | 185 | 55 | 45 | 40 | 40 | 16.5 | 26.5 | 14 | 16.5 | 28 | 21 | 22 | 08 | 34 | 25 | 86 | 430 |
| E216185.TD1201 | 220 | 185 | 55 | 45 | 40 | 40 | 16.5 | 26.5 | 14 | 16.5 | 28 | 21 | 22 | 12 | 34 | 25 | 86 | 400 |

Attention: For a minimum of 50 pieces the diameter d1 can be customised (hole tolerance H10 galvanised and H7 black-oxide treated).
Dm = Maximum obtainable diameter for subsequent machining (widening).



Stock availability as % (🛒)
90% (●) - 40% (●) - 5% (●)

E221



CRANK HANDLE WITH SMOOTH BORE INSERT AND REVOLVING HANDLE M145

General features:

All unspecified features are identical to basic item E216.

Inserts:

Galvanised steel insert with smooth through bore (tolerance H10).

Lateral handle:

Revolving handle art. M145 [page 404].



| Art. | L | R | H | D | d | m | c | A | B | h | d3 | h3 | dm | d1 _{H10} | Q | dl | L1 | g |
|----------------|-----|-----|----|----|----|----|------|------|------|------|----|----|----|-------------------|----|----|----|-----|
| E221065.TP0501 | 88 | 65 | 30 | 27 | 22 | 17 | 13 | 18 | 9.5 | 8 | 14 | 10 | 12 | 05 | 20 | 20 | 56 | 101 |
| E221065.TD1001 | 88 | 65 | 30 | 27 | 22 | 17 | 13 | 18 | 9.5 | 8 | 14 | 10 | 12 | 10 | 20 | 20 | 56 | 107 |
| E221065.TD1201 | 88 | 65 | 30 | 27 | 22 | 17 | 13 | 18 | 9.5 | 8 | 14 | 10 | 12 | 12 | 20 | 20 | 56 | 104 |
| E221080.TP0501 | 106 | 80 | 33 | 30 | 26 | 19 | 13 | 21.5 | 11 | 9 | 18 | 9 | 14 | 5 | 24 | 20 | 56 | 125 |
| E221080.TD1001 | 106 | 80 | 33 | 30 | 26 | 19 | 13 | 21.5 | 11 | 9 | 18 | 9 | 14 | 10 | 24 | 20 | 56 | 130 |
| E221080.TD1201 | 106 | 80 | 33 | 30 | 26 | 19 | 13 | 21.5 | 11 | 9 | 18 | 9 | 14 | 12 | 24 | 20 | 56 | 127 |
| E221110.TD0801 | 138 | 110 | 39 | 33 | 29 | 22 | 14 | 22 | 12 | 11 | 18 | 11 | 14 | 05 | 28 | 23 | 66 | 175 |
| E221110.TD1001 | 138 | 110 | 39 | 33 | 29 | 22 | 14 | 22 | 12 | 11 | 18 | 11 | 14 | 10 | 28 | 23 | 66 | 172 |
| E221110.TD1201 | 138 | 110 | 39 | 33 | 29 | 22 | 14 | 22 | 12 | 11 | 18 | 11 | 14 | 12 | 28 | 23 | 66 | 169 |
| E221140.TD0801 | 174 | 140 | 49 | 41 | 35 | 34 | 16 | 25.5 | 13.5 | 15 | 22 | 19 | 20 | 8 | 30 | 25 | 77 | 263 |
| E221140.TD1201 | 174 | 140 | 49 | 41 | 35 | 34 | 16 | 25.5 | 13.5 | 15 | 22 | 19 | 20 | 12 | 30 | 25 | 77 | 257 |
| E221140.TD1401 | 174 | 140 | 49 | 41 | 35 | 34 | 16 | 25.5 | 13.5 | 15 | 22 | 19 | 20 | 14 | 30 | 25 | 77 | 253 |
| E221140.TD1601 | 174 | 140 | 49 | 41 | 35 | 34 | 16 | 25.5 | 13.5 | 15 | 22 | 19 | 20 | 16 | 30 | 25 | 77 | 249 |
| E221185.TD0801 | 220 | 185 | 55 | 45 | 40 | 40 | 16.5 | 26.5 | 14 | 16.5 | 28 | 21 | 22 | 8 | 34 | 25 | 87 | 440 |
| E221185.TD1201 | 220 | 185 | 55 | 45 | 40 | 40 | 16.5 | 26.5 | 14 | 16.5 | 28 | 21 | 22 | 12 | 34 | 25 | 87 | 433 |

Attention: For a minimum of 50 pieces the diameter d1 can be customised (hole tolerance H10 galvanised and H7 black-oxide treated).
Dm = Maximum obtainable diameter for subsequent machining (widening).

E222



CRANK HANDLE WITH SMOOTH BORE INSERT AND REVOLVING HANDLE M129

General features:

All unspecified features are identical to basic item E216.

Inserts:

Galvanised steel insert with smooth through bore (tolerance H10).

Lateral handle:

Revolving handle art. M129 [page 401].



| Art. | L | R | H | D | d | m | c | A | B | h | d3 | h3 | dm | d1 _{H10} | Q | dl | L1 | g |
|----------------|-----|-----|----|----|----|----|------|------|------|------|----|----|----|-------------------|----|----|----|-----|
| E222065.TP0501 | 88 | 65 | 30 | 27 | 22 | 17 | 13 | 18 | 9.5 | 8 | 14 | 10 | 12 | 05 | 20 | 20 | 52 | 111 |
| E222065.TD1001 | 88 | 65 | 30 | 27 | 22 | 17 | 13 | 18 | 9.5 | 8 | 14 | 10 | 12 | 10 | 20 | 20 | 52 | 117 |
| E222065.TD1201 | 88 | 65 | 30 | 27 | 22 | 17 | 13 | 18 | 9.5 | 8 | 14 | 10 | 12 | 12 | 20 | 20 | 52 | 114 |
| E222080.TP0501 | 106 | 80 | 33 | 30 | 26 | 19 | 13 | 21.5 | 11 | 9 | 18 | 9 | 14 | 05 | 24 | 20 | 52 | 135 |
| E222080.TD1001 | 106 | 80 | 33 | 30 | 26 | 19 | 13 | 21.5 | 11 | 9 | 18 | 9 | 14 | 10 | 24 | 20 | 52 | 140 |
| E222080.TD1201 | 106 | 80 | 33 | 30 | 26 | 19 | 13 | 21.5 | 11 | 9 | 18 | 9 | 14 | 12 | 24 | 20 | 52 | 136 |
| E222110.TD0801 | 138 | 110 | 39 | 33 | 29 | 22 | 14 | 22 | 12 | 11 | 18 | 11 | 14 | 08 | 28 | 23 | 62 | 182 |
| E222110.TD1001 | 138 | 110 | 39 | 33 | 29 | 22 | 14 | 22 | 12 | 11 | 18 | 11 | 14 | 10 | 28 | 23 | 62 | 179 |
| E222110.TD1201 | 138 | 110 | 39 | 33 | 29 | 22 | 14 | 22 | 12 | 11 | 18 | 11 | 14 | 12 | 28 | 23 | 62 | 175 |
| E222140.TD0801 | 174 | 140 | 49 | 41 | 35 | 34 | 16 | 25.5 | 13.5 | 15 | 22 | 19 | 20 | 08 | 30 | 25 | 72 | 271 |
| E222140.TD1201 | 174 | 140 | 49 | 41 | 35 | 34 | 16 | 25.5 | 13.5 | 15 | 22 | 19 | 20 | 12 | 30 | 25 | 72 | 265 |
| E222140.TD1401 | 174 | 140 | 49 | 41 | 35 | 34 | 16 | 25.5 | 13.5 | 15 | 22 | 19 | 20 | 14 | 30 | 25 | 72 | 261 |
| E222140.TD1601 | 174 | 140 | 49 | 41 | 35 | 34 | 16 | 25.5 | 13.5 | 15 | 22 | 19 | 20 | 16 | 30 | 25 | 72 | 255 |
| E222185.TD0801 | 220 | 185 | 55 | 45 | 40 | 40 | 16.5 | 26.5 | 14 | 16.5 | 28 | 21 | 22 | 08 | 34 | 25 | 82 | 450 |
| E222185.TD1201 | 220 | 185 | 55 | 45 | 40 | 40 | 16.5 | 26.5 | 14 | 16.5 | 28 | 21 | 22 | 12 | 34 | 25 | 82 | 442 |

Attention: For a minimum of 50 pieces the diameter d1 can be customised (hole tolerance H10 galvanised and H7 black-oxide treated).
Dm = Maximum obtainable diameter for subsequent machining (widening).

E217



CRANK HANDLE WITH SMOOTH BORE INSERT AND FOLDING HANDLE

Material:

Reinforced polyamide.
Resistant to oils and greases.

Surface finish:

Satin.

Colour:

Black (RAL 9011).

Central cap:

Grey polyamide (RAL 7035 code 13).

Alternative Cap colours:

Orange (RAL 2004 cod. 02).
Red (RAL 3000 cod. 16).
Blue (RAL 5015 cod. 07).
Green (RAL 6024 cod. 17).
Yellow (RAL 1021 cod. 10).
Black (RAL 9011 cod. 01).

Inserts:

Galvanised steel insert with smooth through bore (tolerance H10).

Lateral insert:

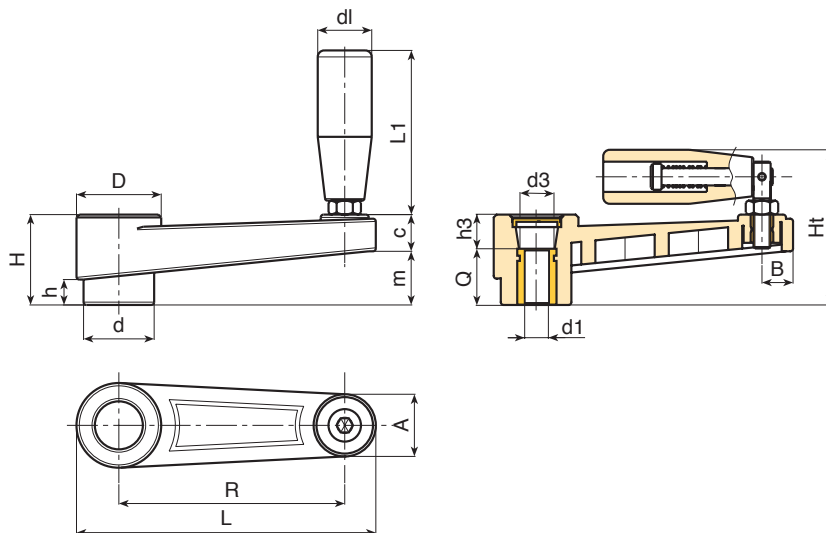
Brass insert with threaded through hole.

Lateral handle:

Revolving, folding handle art. M136 [page 405].

Special requests:

- Upon request and for special quantities inserts can be supplied with custom hole diameter d1.
- Upon request and for special quantities inserts can be supplied in different materials/with different coatings.
- Upon request and for special quantities available in the colours indicated in the chart [page 807].



| Art. | L | R | H | Ht | D | d | m | c | A | B | h | d3 | h3 | dm | d1H10 | Q | d1 | L1 | g |
|----------------|-----|-----|----|------|----|----|----|------|------|------|------|----|----|----|-------|----|----|----|-----|
| E217065.TP0501 | 88 | 65 | 30 | 54 | 27 | 22 | 17 | 13 | 18 | 9.5 | 8 | 14 | 10 | 12 | 05 | 20 | 20 | 54 | 105 |
| E217065.TD1001 | 88 | 65 | 30 | 54 | 27 | 22 | 17 | 13 | 18 | 9.5 | 8 | 14 | 10 | 12 | 10 | 20 | 20 | 54 | 100 |
| E217065.TD1201 | 88 | 65 | 30 | 54 | 27 | 22 | 17 | 13 | 18 | 9.5 | 8 | 14 | 10 | 12 | 12 | 20 | 20 | 54 | 97 |
| E217080.TP0501 | 106 | 80 | 33 | 57 | 30 | 26 | 19 | 13 | 21.5 | 11 | 9 | 18 | 9 | 14 | 05 | 24 | 20 | 54 | 115 |
| E217080.TD1001 | 106 | 80 | 33 | 57 | 30 | 26 | 19 | 13 | 21.5 | 11 | 9 | 18 | 9 | 14 | 10 | 24 | 20 | 54 | 110 |
| E217080.TD1201 | 106 | 80 | 33 | 57 | 30 | 26 | 19 | 13 | 21.5 | 11 | 9 | 18 | 9 | 14 | 12 | 24 | 20 | 54 | 107 |
| E217110.TD0801 | 138 | 110 | 39 | 67.5 | 33 | 29 | 25 | 14 | 22 | 12 | 11 | 18 | 11 | 14 | 08 | 28 | 25 | 75 | 156 |
| E217110.TD1001 | 138 | 110 | 39 | 67.5 | 33 | 29 | 25 | 14 | 22 | 12 | 11 | 18 | 11 | 14 | 10 | 28 | 25 | 75 | 153 |
| E217110.TD1201 | 138 | 110 | 39 | 67.5 | 33 | 29 | 25 | 14 | 22 | 12 | 11 | 18 | 11 | 14 | 12 | 28 | 25 | 75 | 150 |
| E217140.TD0801 | 174 | 140 | 49 | 82 | 41 | 35 | 33 | 16 | 25.5 | 13.5 | 15 | 22 | 19 | 20 | 05 | 30 | 26 | 89 | 300 |
| E217140.TD1201 | 174 | 140 | 49 | 82 | 41 | 35 | 33 | 16 | 25.5 | 13.5 | 15 | 22 | 19 | 20 | 12 | 30 | 26 | 89 | 245 |
| E217140.TD1401 | 174 | 140 | 49 | 82 | 41 | 35 | 33 | 16 | 25.5 | 13.5 | 15 | 22 | 19 | 20 | 14 | 30 | 26 | 89 | 242 |
| E217140.TD1601 | 174 | 140 | 49 | 82 | 41 | 35 | 33 | 16 | 25.5 | 13.5 | 15 | 22 | 19 | 20 | 16 | 30 | 26 | 89 | 238 |
| E217185.TD0801 | 220 | 185 | 55 | 88 | 45 | 40 | 40 | 16.5 | 26.5 | 14 | 16.5 | 28 | 21 | 22 | 08 | 34 | 26 | 97 | 450 |
| E217185.TD1201 | 220 | 185 | 55 | 88 | 45 | 40 | 40 | 16.5 | 26.5 | 14 | 16.5 | 28 | 21 | 22 | 12 | 34 | 26 | 97 | 445 |

Attention: For a minimum of 50 pieces the diameter d1 can be customised (hole tolerance H10 galvanised and H7 black-oxide treated).
Dm = Maximum obtainable diameter for subsequent machining (widening).



Stock availability as % (🛒)
90% (●) - 40% (●) - 5% (●)



STRENGTH
IS A VIRTUE OF
THE SOLIDLY BUILT



BOTELO®

E224



PA6
+G.F.

UL94
HB



CRANK HANDLE WITH HEXAGONAL STUD AND REVOLVING HANDLE

Material:

Reinforced polyamide.
Resistant to oils and greases.

Surface finish:

Satin.

Colour:

Black (RAL 9011).

Central cap:

Grey polyamide (RAL 7035 code 13).

Alternative Cap colours:

Orange (RAL 2004 cod. 02).
Red (RAL 3000 cod. 16).
Blue (RAL 5015 cod. 07).
Green (RAL 6024 cod. 17).
Yellow (RAL 1021 cod. 10).
Black (RAL 9011 cod. 01).

Inserts:

Hexagonal stud in galvanised steel (hexagon tolerance H9).

Lateral insert:

Brass insert with threaded through hole.

Lateral handle:

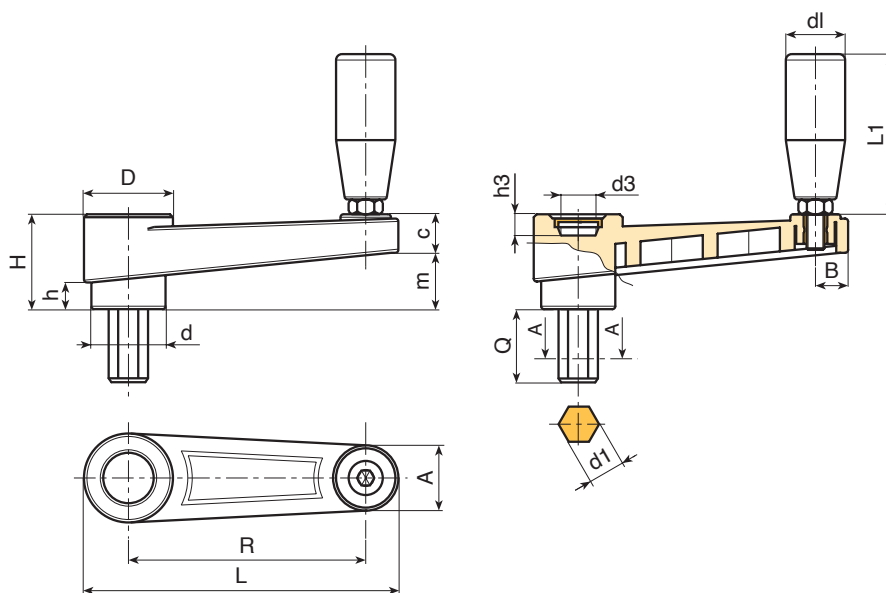
E224: Revolving handle art. M144 page (400).

E226: Revolving handle art. M145 page (404).

E227: Revolving handle art. M129 page (401).

Special requests:

- Upon request and for special quantities inserts can be supplied with customised lengths.
- Upon request and for special quantities inserts can be supplied in different materials.
- Upon request and for special quantities available in the colours indicated in the chart [page 807].



| 🛒 | Art. | L | R | H | D | d | m | c | A | B | h | d3 | h3 | d1 _{H10} | Q | LM | dl | L1 | 📦 |
|---|-------------------|-----|-----|----|----|----|----|----|------|------|----|----|----|-------------------|------|-----|----|----|---|
| ● | E224065.TE06X..01 | 88 | 65 | 30 | 27 | 22 | 17 | 13 | 18 | 9.5 | 8 | 14 | 10 | 6 | A.R. | 60 | 20 | 56 | - |
| ● | E224065.TE07X..01 | 88 | 65 | 30 | 27 | 22 | 17 | 13 | 18 | 9.5 | 8 | 14 | 10 | 7 | A.R. | 60 | 20 | 56 | - |
| ● | E224080.TE07X..01 | 106 | 80 | 33 | 30 | 26 | 19 | 13 | 21.5 | 11 | 9 | 18 | 9 | 7 | A.R. | 100 | 20 | 56 | - |
| ● | E224080.TE08X..01 | 106 | 80 | 33 | 30 | 26 | 19 | 13 | 21.5 | 11 | 9 | 18 | 9 | 8 | A.R. | 100 | 20 | 56 | - |
| ● | E224110.TE08X..01 | 138 | 110 | 39 | 33 | 29 | 22 | 14 | 22 | 12 | 11 | 18 | 11 | 8 | A.R. | 90 | 21 | 66 | - |
| ● | E224110.TE09X..01 | 138 | 110 | 39 | 33 | 29 | 22 | 14 | 22 | 12 | 11 | 18 | 11 | 9 | A.R. | 90 | 21 | 66 | - |
| ● | E224140.TE09X..01 | 174 | 140 | 49 | 41 | 35 | 34 | 16 | 25.5 | 13.5 | 15 | 22 | 19 | 9 | A.R. | 110 | 23 | 76 | - |
| ● | E224140.TE10X..01 | 174 | 140 | 49 | 41 | 35 | 34 | 16 | 25.5 | 13.5 | 15 | 22 | 19 | 10 | A.R. | 110 | 23 | 76 | - |

Enter the selected stud length in place of the two dots .. in the item code.

A.R. = Upon request, for a minimum of 100 pieces.

LM = Maximum mouldable length.



Stock availability as % (🛒)
90% (●) - 40% (●) - 5% (●)

E226



CRANK HANDLE WITH HEXAGONAL STUD AND REVOLVING HANDLE

M145

General features:

All unspecified features are identical to basic item E224.

Inserts:

Hexagonal stud in galvanised steel (hexagon tolerance H9).

Lateral handle:

Revolving handle art. M145 [page 404].



| Art. | L | R | H | D | d | m | c | A | B | h | d3 | h3 | d1H10 | Q | LM | dl | L1 | g |
|---------------------|-----|-----|----|----|----|----|----|------|------|----|----|----|-------|------|-----|----|----|---|
| ● E226065.TE06X..01 | 88 | 65 | 30 | 27 | 22 | 17 | 13 | 18 | 9.5 | 8 | 14 | 10 | 6 | A.R. | 60 | 20 | 56 | - |
| ● E226065.TE07X..01 | 88 | 65 | 30 | 27 | 22 | 17 | 13 | 18 | 9.5 | 8 | 14 | 10 | 7 | A.R. | 60 | 20 | 56 | - |
| ● E226080.TE07X..01 | 106 | 80 | 33 | 30 | 26 | 19 | 13 | 21.5 | 11 | 9 | 18 | 9 | 7 | A.R. | 100 | 20 | 56 | - |
| ● E226080.TE08X..01 | 106 | 80 | 33 | 30 | 26 | 19 | 13 | 21.5 | 11 | 9 | 18 | 9 | 8 | A.R. | 100 | 20 | 56 | - |
| ● E226110.TE08X..01 | 138 | 110 | 39 | 33 | 29 | 22 | 14 | 22 | 12 | 11 | 18 | 11 | 8 | A.R. | 90 | 21 | 66 | - |
| ● E226110.TE09X..01 | 138 | 110 | 39 | 33 | 29 | 22 | 14 | 22 | 12 | 11 | 18 | 11 | 9 | A.R. | 90 | 21 | 66 | - |
| ● E226140.TE09X..01 | 174 | 140 | 49 | 41 | 35 | 34 | 16 | 25.5 | 13.5 | 15 | 22 | 19 | 9 | A.R. | 110 | 23 | 76 | - |
| ● E226140.TE10X..01 | 174 | 140 | 49 | 41 | 35 | 34 | 16 | 25.5 | 13.5 | 15 | 22 | 19 | 10 | A.R. | 110 | 23 | 76 | - |

Enter the selected stud length in place of the two dots .. in the item code.

A.R. = Upon request, for a minimum of 100 pieces.

E227



CRANK HANDLE WITH HEXAGONAL STUD AND REVOLVING HANDLE

M129

General features:

All unspecified features are identical to basic item E224.

Inserts:

Hexagonal stud in galvanised steel (hexagon tolerance H9).

Lateral handle:

Revolving handle art. M129 [page 401].



| Art. | L | R | H | D | d | m | c | A | B | h | d3 | h3 | d1H10 | Q | LM | dl | L1 | g |
|---------------------|-----|-----|----|----|----|----|----|------|------|----|----|----|-------|------|-----|----|----|---|
| ● E227065.TE06X..01 | 88 | 65 | 30 | 27 | 22 | 17 | 13 | 18 | 9.5 | 8 | 14 | 10 | 6 | A.R. | 60 | 20 | 56 | - |
| ● E227065.TE07X..01 | 88 | 65 | 30 | 27 | 22 | 17 | 13 | 18 | 9.5 | 8 | 14 | 10 | 7 | A.R. | 60 | 20 | 56 | - |
| ● E227080.TE07X..01 | 106 | 80 | 33 | 30 | 26 | 19 | 13 | 21.5 | 11 | 9 | 18 | 9 | 7 | A.R. | 100 | 20 | 56 | - |
| ● E227080.TE08X..01 | 106 | 80 | 33 | 30 | 26 | 19 | 13 | 21.5 | 11 | 9 | 18 | 9 | 8 | A.R. | 100 | 20 | 56 | - |
| ● E227110.TE08X..01 | 138 | 110 | 39 | 33 | 29 | 22 | 14 | 22 | 12 | 11 | 18 | 11 | 8 | A.R. | 90 | 21 | 66 | - |
| ● E227110.TE09X..01 | 138 | 110 | 39 | 33 | 29 | 22 | 14 | 22 | 12 | 11 | 18 | 11 | 9 | A.R. | 90 | 21 | 66 | - |
| ● E227140.TE09X..01 | 174 | 140 | 49 | 41 | 35 | 34 | 16 | 25.5 | 13.5 | 15 | 22 | 19 | 9 | A.R. | 110 | 23 | 76 | - |
| ● E227140.TE10X..01 | 174 | 140 | 49 | 41 | 35 | 34 | 16 | 25.5 | 13.5 | 15 | 22 | 19 | 10 | A.R. | 110 | 23 | 76 | - |

Enter the selected stud length in place of the two dots .. in the item code.

A.R. = Upon request, for a minimum of 100 pieces.

LM = Maximum mouldable length.



Stock availability as % (🛒)
90% (●) - 40% (●) - 5% (●)

E230



CRANK HANDLE WITH HEXAGONAL HOLE AND REVOLVING HANDLE

Material:

Reinforced polyamide.
Resistant to oils and greases.

Surface finish:

Satin.

Colour:

Black (RAL 9011).

Central cap:

Grey polyamide (RAL 7035 code 13).

Alternative Cap colours:

Orange (RAL 2004 cod. 02).
Red (RAL 3000 cod. 16).
Blue (RAL 5015 cod. 07).
Green (RAL 6024 cod. 17).
Yellow (RAL 1021 cod. 10).
Black (RAL 9011 cod. 01).

Inserts:

Bush with hexagonal through hole in black oxide treated steel (hole tolerance H10).

Lateral insert:

Brass insert with threaded through hole.

Lateral handle:

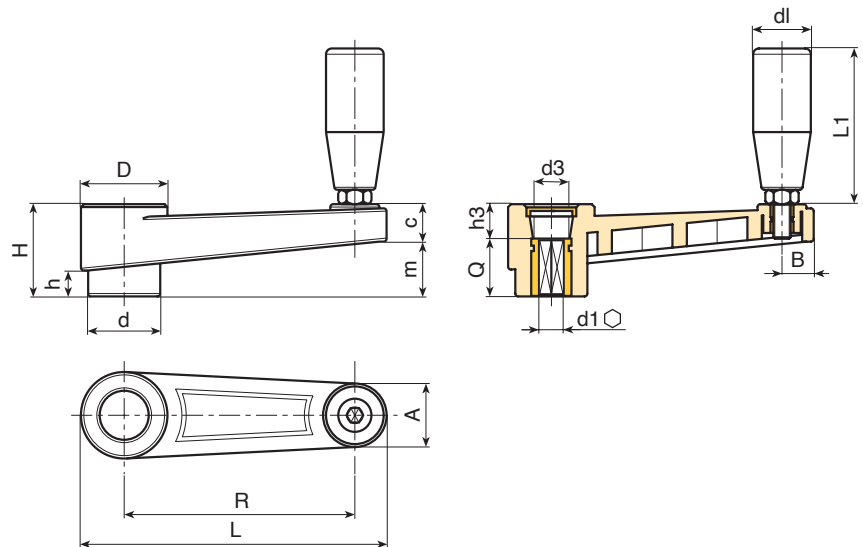
E230: Revolving handle art. M144 page (400).

E231: Revolving handle art. M145 page (404).

E232: Revolving handle art. M129 page (401).

Special requests:

- Upon request and for special quantities inserts can be supplied in different materials/with different coatings.
- Upon request and for special quantities available in the colours indicated in the chart [page 807].



| Art. | L | R | H | D | d | m | c | A | B | h | d3 | h3 | d1 _{H10} | Q | d1 | L1 | g |
|-------------------|-----|-----|----|----|----|----|------|------|------|------|----|----|-------------------|----|----|----|-----|
| ● E230065.TE0601P | 88 | 65 | 30 | 27 | 22 | 17 | 13 | 18 | 9.5 | 8 | 14 | 10 | 6 | 20 | 20 | 56 | 96 |
| ● E230065.TE0801P | 88 | 65 | 30 | 27 | 22 | 17 | 13 | 18 | 9.5 | 8 | 14 | 10 | 8 | 20 | 20 | 56 | 93 |
| ● E230080.TE1001P | 106 | 80 | 33 | 30 | 26 | 19 | 13 | 21.5 | 11 | 9 | 18 | 9 | 10 | 24 | 20 | 56 | 105 |
| ● E230080.TE1201P | 106 | 80 | 33 | 30 | 26 | 19 | 13 | 21.5 | 11 | 9 | 18 | 9 | 12 | 24 | 20 | 56 | 103 |
| ● E230110.TE1201P | 138 | 110 | 39 | 33 | 29 | 22 | 14 | 22 | 12 | 11 | 18 | 11 | 12 | 28 | 21 | 66 | 152 |
| ● E230110.TE1401P | 138 | 110 | 39 | 33 | 29 | 22 | 14 | 22 | 12 | 11 | 18 | 11 | 14 | 28 | 21 | 66 | 149 |
| ● E230140.TE1401P | 174 | 140 | 49 | 41 | 35 | 34 | 16 | 25.5 | 13.5 | 15 | 22 | 19 | 14 | 30 | 23 | 76 | 242 |
| ● E230140.TE1601P | 174 | 140 | 49 | 41 | 35 | 34 | 16 | 25.5 | 13.5 | 15 | 22 | 19 | 16 | 30 | 23 | 76 | 238 |
| ● E230185.TE1601P | 220 | 185 | 55 | 45 | 40 | 40 | 16.5 | 26.5 | 14 | 16.5 | 22 | 19 | 16 | 34 | 25 | 86 | 385 |
| ● E230185.TE1701P | 220 | 185 | 55 | 45 | 40 | 40 | 16.5 | 26.5 | 14 | 16.5 | 22 | 19 | 17 | 34 | 25 | 86 | 385 |

E231



PA6
+G.F.

UL94
HB

RoHS
COMPLIANT

CRANK HANDLE WITH HEXAGONAL HOLE AND REVOLVING HANDLE

M145

General features:

All unspecified features are identical to basic item E230.

Inserts:

Bush with hexagonal through hole in black oxide treated steel (hole tolerance H10).

Lateral handle:

Revolving handle art. M145 [page 404].



| 🛒 | Art. | L | R | H | D | d | m | c | A | B | h | d3 | h3 | d1 _{H10} | Q | dl | L1 | g |
|---|-----------------|-----|-----|----|----|----|----|------|------|------|------|----|----|-------------------|----|----|----|-----|
| ● | E231065.TE0601P | 88 | 65 | 30 | 27 | 22 | 17 | 13 | 18 | 9.5 | 8 | 14 | 10 | 6 | 20 | 20 | 56 | 111 |
| ● | E231065.TE0801P | 88 | 65 | 30 | 27 | 22 | 17 | 13 | 18 | 9.5 | 8 | 14 | 10 | 8 | 20 | 20 | 56 | 108 |
| ● | E231080.TE1001P | 106 | 80 | 33 | 30 | 26 | 19 | 13 | 21.5 | 11 | 9 | 18 | 9 | 10 | 24 | 20 | 56 | 130 |
| ● | E231080.TE1201P | 106 | 80 | 33 | 30 | 26 | 19 | 13 | 21.5 | 11 | 9 | 18 | 9 | 12 | 24 | 20 | 56 | 128 |
| ● | E231110.TE1201P | 138 | 110 | 39 | 33 | 29 | 22 | 14 | 22 | 12 | 11 | 18 | 11 | 12 | 28 | 21 | 66 | 177 |
| ● | E231110.TE1401P | 138 | 110 | 39 | 33 | 29 | 22 | 14 | 22 | 12 | 11 | 18 | 11 | 14 | 28 | 21 | 66 | 173 |
| ● | E231140.TE1401P | 174 | 140 | 49 | 41 | 35 | 34 | 16 | 25.5 | 13.5 | 15 | 22 | 19 | 14 | 30 | 23 | 76 | 267 |
| ● | E231140.TE1601P | 174 | 140 | 49 | 41 | 35 | 34 | 16 | 25.5 | 13.5 | 15 | 22 | 19 | 16 | 30 | 23 | 76 | 262 |
| ● | E231185.TE1601P | 220 | 185 | 55 | 45 | 40 | 40 | 16.5 | 26.5 | 14 | 16.5 | 22 | 19 | 16 | 34 | 25 | 86 | 400 |
| ● | E231185.TE1701P | 220 | 185 | 55 | 45 | 40 | 40 | 16.5 | 26.5 | 14 | 16.5 | 22 | 19 | 17 | 34 | 25 | 86 | 398 |

E232



PA6
+G.F.

UL94
HB

RoHS
COMPLIANT

CRANK HANDLE WITH HEXAGONAL HOLE AND REVOLVING HANDLE

M129

General features:

All unspecified features are identical to basic item E230.

Inserts:

Bush with hexagonal through hole in black oxide treated steel (hole tolerance H10).

Lateral handle:

Revolving handle art. M129 [page 401].



| 🛒 | Art. | L | R | H | D | d | m | c | A | B | h | d3 | h3 | d1 _{H10} | Q | dl | L1 | g |
|---|-----------------|-----|-----|----|----|----|----|------|------|------|------|----|----|-------------------|----|----|----|-----|
| ● | E232065.TE0601P | 88 | 65 | 30 | 27 | 22 | 17 | 13 | 18 | 9.5 | 8 | 14 | 10 | 6 | 20 | 20 | 56 | 101 |
| ● | E232065.TE0801P | 88 | 65 | 30 | 27 | 22 | 17 | 13 | 18 | 9.5 | 8 | 14 | 10 | 8 | 20 | 20 | 56 | 98 |
| ● | E232080.TE1001P | 106 | 80 | 33 | 30 | 26 | 19 | 13 | 21.5 | 11 | 9 | 18 | 9 | 10 | 24 | 20 | 56 | 120 |
| ● | E232080.TE1201P | 106 | 80 | 33 | 30 | 26 | 19 | 13 | 21.5 | 11 | 9 | 18 | 9 | 12 | 24 | 20 | 56 | 118 |
| ● | E232110.TE1201P | 138 | 110 | 39 | 33 | 29 | 22 | 14 | 22 | 12 | 11 | 18 | 11 | 12 | 28 | 21 | 66 | 167 |
| ● | E232110.TE1401P | 138 | 110 | 39 | 33 | 29 | 22 | 14 | 22 | 12 | 11 | 18 | 11 | 14 | 28 | 21 | 66 | 163 |
| ● | E232140.TE1401P | 174 | 140 | 49 | 41 | 35 | 34 | 16 | 25.5 | 13.5 | 15 | 22 | 19 | 14 | 30 | 23 | 76 | 257 |
| ● | E232140.TE1601P | 174 | 140 | 49 | 41 | 35 | 34 | 16 | 25.5 | 13.5 | 15 | 22 | 19 | 16 | 30 | 23 | 76 | 252 |
| ● | E232185.TE1601P | 220 | 185 | 55 | 45 | 40 | 40 | 16.5 | 26.5 | 14 | 16.5 | 22 | 19 | 16 | 34 | 25 | 86 | 390 |
| ● | E232185.TE1701P | 220 | 185 | 55 | 45 | 40 | 40 | 16.5 | 26.5 | 14 | 16.5 | 22 | 19 | 17 | 34 | 25 | 86 | 390 |

E330



CRANK HANDLE WITH SQUARE HOLE AND REVOLVING HANDLE

Material:

Reinforced polyamide.
Resistant to oils and greases.

Surface finish:

Satin.

Colour:

Black (RAL 9011).

Central cap:

Grey polyamide (RAL 7035 code 13).

Alternative Cap colours:

Orange (RAL 2004 cod. 02).
Red (RAL 3000 cod. 16).
Blue (RAL 5015 cod. 07).
Green (RAL 6024 cod. 17).
Yellow (RAL 1021 cod. 10).
Black (RAL 9011 cod. 01).

Inserts:

Bush with square through hole in black oxide treated steel (hole tolerance H10).

Lateral insert:

Brass insert with threaded through hole.

Lateral handle:

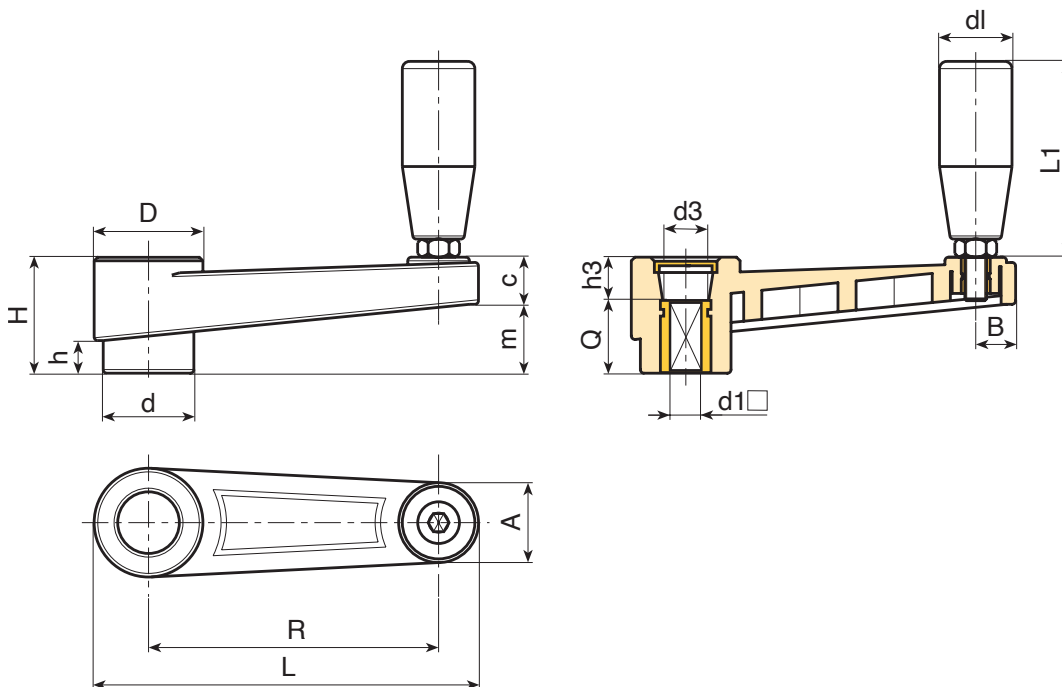
E330: Revolving handle art. M144 page (400).

E331: Revolving handle art. M145 page (404).

E332: Revolving handle art. M129 page (401).

Special requests:

- Upon request and for special quantities inserts can be supplied in different materials/with different coatings.
- Upon request and for special quantities available in the colours indicated in the chart [page 807].



| Art. | L | R | H | D | d | m | c | A | B | h | d3 | h3 | d1 _{H10} | Q | dl | L1 | g |
|-----------------|-----|-----|----|----|----|----|------|------|------|------|----|----|-------------------|----|----|----|-----|
| E330065.TQ0601P | 88 | 65 | 30 | 27 | 22 | 17 | 13 | 18 | 9.5 | 8 | 14 | 10 | 6 | 20 | 20 | 56 | 96 |
| E330065.TQ0801P | 88 | 65 | 30 | 27 | 22 | 17 | 13 | 18 | 9.5 | 8 | 14 | 10 | 8 | 20 | 20 | 56 | 92 |
| E330080.TQ1001P | 106 | 80 | 33 | 30 | 26 | 19 | 13 | 21.5 | 11 | 9 | 18 | 9 | 10 | 24 | 20 | 56 | 105 |
| E330110.TQ1201P | 138 | 110 | 39 | 33 | 29 | 22 | 14 | 22 | 12 | 11 | 18 | 11 | 12 | 28 | 21 | 66 | 152 |
| E330140.TQ1401P | 174 | 140 | 49 | 41 | 35 | 34 | 16 | 25.5 | 13.5 | 15 | 22 | 19 | 14 | 30 | 23 | 76 | 242 |
| E330185.TQ1701P | 220 | 185 | 55 | 45 | 40 | 40 | 16.5 | 26.5 | 14 | 16.5 | 28 | 21 | 17 | 34 | 25 | 86 | 385 |

E331



PA6
+G.F.

UL94
HB



CRANK HANDLE WITH SQUARE HOLE AND REVOLVING HANDLE M145

General features:

All unspecified features are identical to basic item E330.

Inserts:

Bush with square through hole in black oxide treated steel (hole tolerance H10).

Lateral handle:

Revolving handle art. M145 [page 404].



| 🛒 | Art. | L | R | H | D | d | m | c | A | B | h | d3 | h3 | d1 _{H10} | Q | dl | L1 | g |
|---|-----------------|-----|-----|----|----|----|----|------|------|------|------|----|----|-------------------|----|----|----|-----|
| ● | E331065.TQ0601P | 88 | 65 | 30 | 27 | 22 | 17 | 13 | 18 | 9.5 | 8 | 14 | 10 | 6 | 20 | 20 | 56 | 111 |
| ● | E331065.TQ0801P | 88 | 65 | 30 | 27 | 22 | 17 | 13 | 18 | 9.5 | 8 | 14 | 10 | 8 | 20 | 20 | 56 | 117 |
| ● | E331080.TQ1001P | 106 | 80 | 33 | 30 | 26 | 19 | 13 | 21.5 | 11 | 9 | 18 | 9 | 10 | 24 | 20 | 56 | 140 |
| ● | E331110.TQ1201P | 138 | 110 | 39 | 33 | 29 | 22 | 14 | 22 | 12 | 11 | 18 | 11 | 12 | 28 | 21 | 66 | 177 |
| ● | E331140.TQ1401P | 174 | 140 | 49 | 41 | 35 | 34 | 16 | 25.5 | 13.5 | 15 | 22 | 19 | 14 | 30 | 23 | 76 | 267 |
| ● | E331185.TQ1701P | 220 | 185 | 55 | 45 | 40 | 40 | 16.5 | 26.5 | 14 | 16.5 | 28 | 21 | 17 | 34 | 25 | 86 | 400 |

E332



PA6
+G.F.

UL94
HB



CRANK HANDLE WITH SQUARE HOLE AND REVOLVING HANDLE M129

General features:

All unspecified features are identical to basic item E330.

Inserts:

Bush with square through hole in black oxide treated steel (hole tolerance H10).

Lateral handle:

Revolving handle art. M129 [page 401].



| 🛒 | Art. | L | R | H | D | d | m | c | A | B | h | d3 | h3 | d1 _{H10} | Q | dl | L1 | g |
|---|-----------------|-----|-----|----|----|----|----|------|------|------|------|----|----|-------------------|----|----|----|-----|
| ● | E332065.TQ0601P | 88 | 65 | 30 | 27 | 22 | 17 | 13 | 18 | 9.5 | 8 | 14 | 10 | 6 | 20 | 20 | 56 | 101 |
| ● | E332065.TQ0801P | 88 | 65 | 30 | 27 | 22 | 17 | 13 | 18 | 9.5 | 8 | 14 | 10 | 8 | 20 | 20 | 56 | 107 |
| ● | E332080.TQ1001P | 106 | 80 | 33 | 30 | 26 | 19 | 13 | 21.5 | 11 | 9 | 18 | 9 | 10 | 24 | 20 | 56 | 130 |
| ● | E332110.TQ1201P | 138 | 110 | 39 | 33 | 29 | 22 | 14 | 22 | 12 | 11 | 18 | 11 | 12 | 28 | 21 | 66 | 167 |
| ● | E332140.TQ1401P | 174 | 140 | 49 | 41 | 35 | 34 | 16 | 25.5 | 13.5 | 15 | 22 | 19 | 14 | 30 | 23 | 76 | 257 |
| ● | E332185.TQ1701P | 220 | 185 | 55 | 45 | 40 | 40 | 16.5 | 26.5 | 14 | 16.5 | 28 | 21 | 17 | 34 | 25 | 86 | 390 |

E240



CRANK HANDLE WITH HEXAGONAL HOLE INSERT AND FOLDING HANDLE

Material:

Reinforced polyamide.
Resistant to oils and greases.

Surface finish:

Satin.

Colour:

Black (RAL 9011).

Central cap:

Grey polyamide (RAL 7035 code 13).

Alternative Cap colours:

Orange (RAL 2004 cod. 02).
Red (RAL 3000 cod. 16).
Blue (RAL 5015 cod. 07).
Green (RAL 6024 cod. 17).
Yellow (RAL 1021 cod. 10).
Black (RAL 9011 cod. 01).

Inserts:

Bush with hexagonal through hole in black oxide treated steel (hole tolerance H10).

Lateral insert:

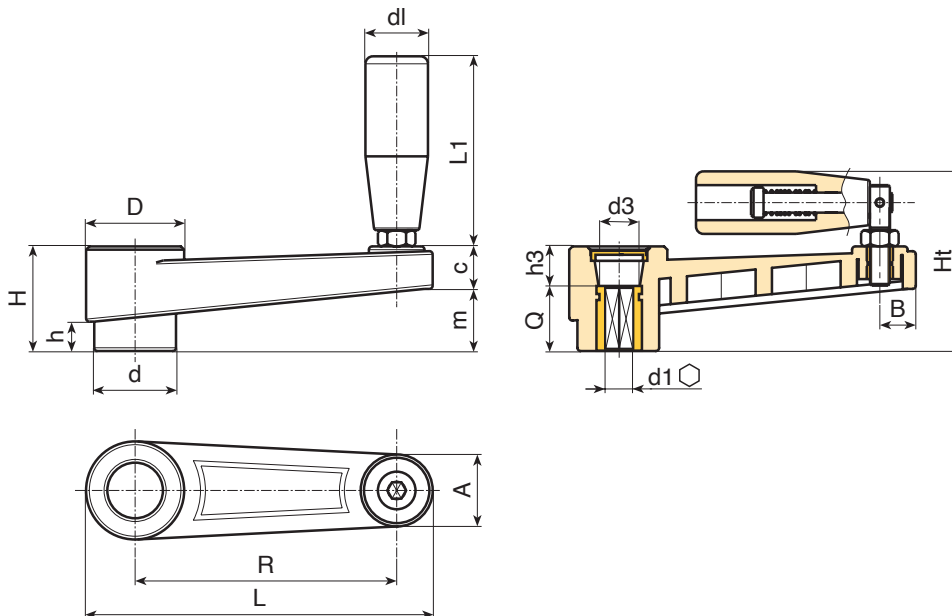
Brass insert with threaded through hole.

Lateral handle:

Revolving, folding handle art. M136 [page 405].

Special requests:

- Upon request and for special quantities inserts can be supplied in different materials/with different coatings.
- Upon request and for special quantities available in the colours indicated in the chart [page 807].



| Art. | L | R | H | Ht | D | d | m | c | A | B | h | d3 | h3 | d1 _{H10} | Q | dl | L1 | g |
|-------------------|-----|-----|----|------|----|----|----|------|------|------|------|----|----|-------------------|----|----|----|-----|
| ● E240065.TE0601P | 88 | 65 | 30 | 54 | 27 | 22 | 17 | 13 | 18 | 9.5 | 8 | 14 | 10 | 6 | 20 | 20 | 54 | 78 |
| ● E240065.TE0801P | 88 | 65 | 30 | 54 | 27 | 22 | 17 | 13 | 18 | 9.5 | 8 | 14 | 10 | 8 | 20 | 20 | 54 | 78 |
| ● E240080.TE1001P | 106 | 80 | 33 | 57 | 30 | 26 | 19 | 13 | 21.5 | 11 | 9 | 18 | 9 | 10 | 24 | 20 | 54 | 94 |
| ● E240080.TE1201P | 106 | 80 | 33 | 57 | 30 | 26 | 19 | 13 | 21.5 | 11 | 9 | 18 | 9 | 12 | 24 | 20 | 54 | 95 |
| ● E240110.TE1201P | 138 | 110 | 39 | 67.5 | 33 | 29 | 25 | 14 | 22 | 12 | 11 | 18 | 11 | 12 | 28 | 25 | 75 | 156 |
| ● E240110.TE1401P | 138 | 110 | 39 | 67.5 | 33 | 29 | 25 | 14 | 22 | 12 | 11 | 18 | 11 | 14 | 28 | 25 | 75 | 156 |
| ● E240140.TE1401P | 174 | 140 | 49 | 82 | 41 | 35 | 33 | 16 | 25.5 | 13.5 | 15 | 22 | 19 | 14 | 30 | 26 | 89 | 274 |
| ● E240140.TE1601P | 174 | 140 | 49 | 82 | 41 | 35 | 33 | 16 | 25.5 | 13.5 | 15 | 22 | 19 | 16 | 30 | 26 | 89 | 283 |
| ● E240185.TE1601P | 220 | 185 | 55 | 88 | 45 | 40 | 40 | 16.5 | 26.5 | 14 | 16.5 | 28 | 21 | 16 | 34 | 26 | 97 | 340 |
| ● E240185.TE1701P | 220 | 185 | 55 | 88 | 45 | 40 | 40 | 16.5 | 26.5 | 14 | 16.5 | 28 | 21 | 17 | 34 | 26 | 97 | 345 |

E242



PA6
+G.F.

UL94
HB



CRANK HANDLE WITH SQUARE HOLE INSERT AND FOLDING HANDLE

Material:

Reinforced polyamide.
Resistant to oils and greases.

Surface finish:

Satin.

Colour:

Black (RAL 9011).

Central cap:

Grey polyamide (RAL 7035 code 13).

Alternative Cap colours:

Orange (RAL 2004 cod. 02).
Red (RAL 3000 cod. 16).
Blue (RAL 5015 cod. 07).
Green (RAL 6024 cod. 17).
Yellow (RAL 1021 cod. 10).
Black (RAL 9011 cod. 01).

Inserts:

Bush with square through hole in black oxide treated steel
(hole tolerance H10).

Lateral insert:

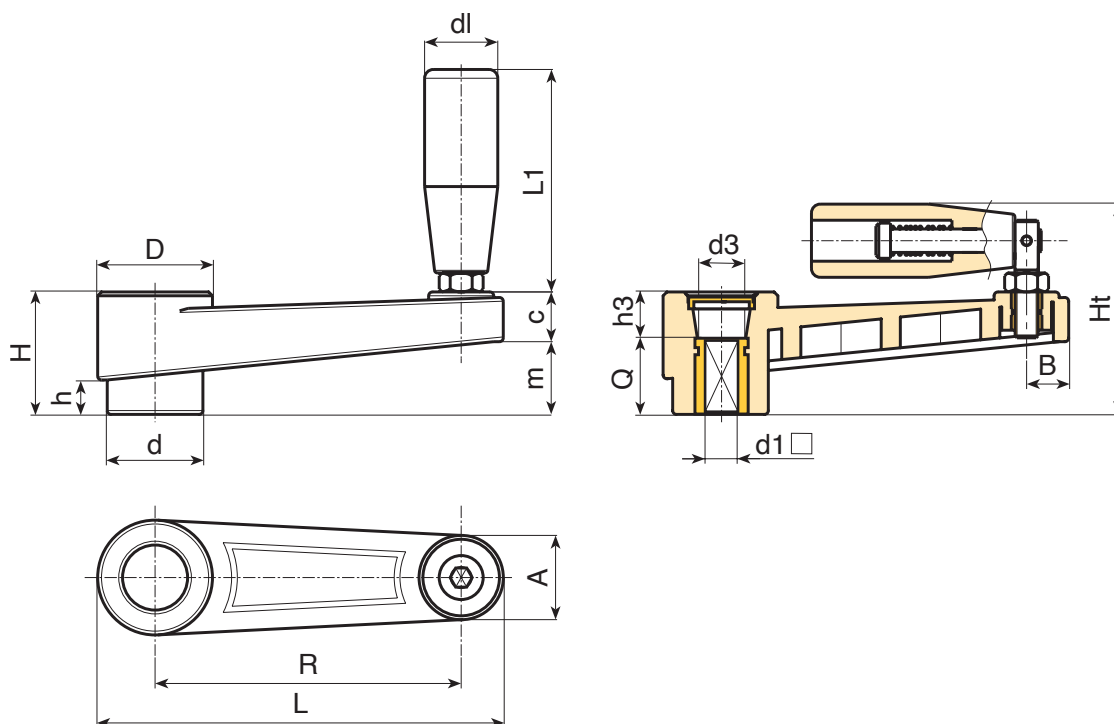
Brass insert with threaded through hole.

Lateral handle:

Revolving, folding handle art. M136 [page 405].

Special requests:

- Upon request and for special quantities inserts can be supplied in different materials/with different coatings.
- Upon request and for special quantities available in the colours indicated in the chart [page 807].



| Art. | L | R | H | Ht | D | d | m | c | A | B | h | d3 | h3 | d1 _{H10} | Q | dl | L1 | g |
|-------------------|-----|-----|----|------|----|----|----|------|------|------|------|----|----|-------------------|----|----|----|-----|
| ● E242065.TQ0801P | 88 | 65 | 30 | 54 | 27 | 22 | 17 | 13 | 18 | 9.5 | 8 | 14 | 10 | 8 | 20 | 20 | 54 | 100 |
| ● E242080.TQ1001P | 106 | 80 | 33 | 57 | 30 | 26 | 19 | 13 | 21.5 | 11 | 9 | 18 | 9 | 10 | 24 | 20 | 54 | 110 |
| ● E242110.TQ1201P | 138 | 110 | 39 | 67.5 | 33 | 29 | 25 | 14 | 22 | 12 | 11 | 18 | 11 | 12 | 28 | 25 | 75 | 156 |
| ● E242140.TQ1401P | 174 | 140 | 49 | 82 | 41 | 35 | 33 | 16 | 25.5 | 13.5 | 15 | 22 | 19 | 14 | 30 | 26 | 89 | 240 |
| ● E242185.TQ1701P | 220 | 185 | 55 | 88 | 45 | 40 | 40 | 16.5 | 26.5 | 14 | 16.5 | 28 | 21 | 17 | 34 | 26 | 97 | 430 |

E518



INDEXED CRANK HANDLE WITH THREADED INSERT AND REVOLVING HANDLE

Material:

Reinforced polyamide. Resistant to oils and greases.

Surface finish:

Satin.

Colour:

Black (RAL 9011).

Inserts:

Galvanised steel insert with female threaded hole (thread tolerance 6H).

Lateral insert:

Brass insert with threaded through hole.

Lateral handle:

E518: Revolving handle art. M144 page (400).

E513: Revolving handle art. M145 page (404).

E517: Revolving handle art. M129 page (401).

Spring:

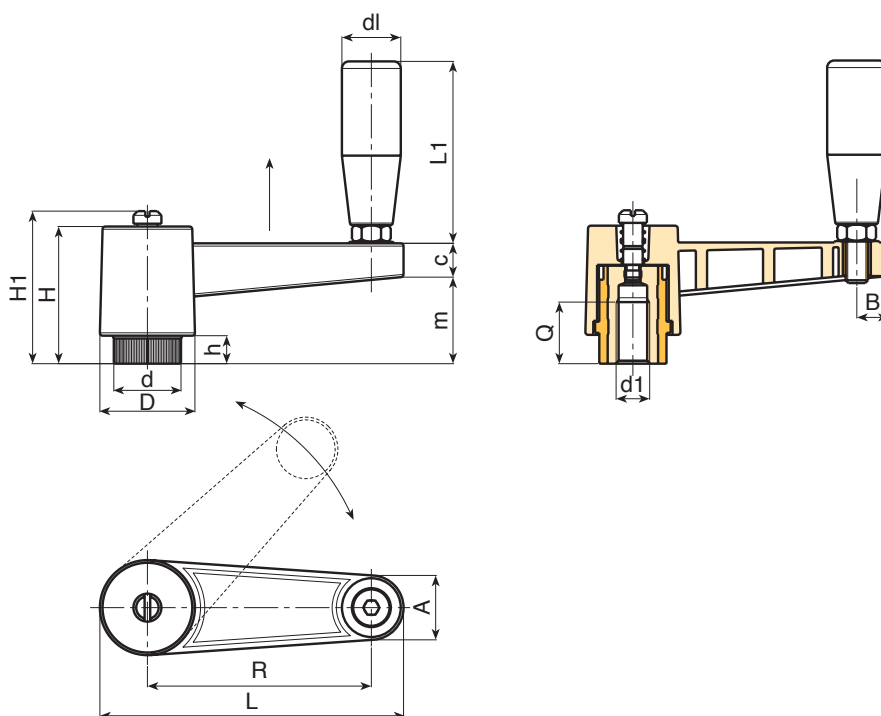
Stainless steel spring (Aisi 302).

Fixing screw:

Black oxide treated steel screw with slotted head.

Special requests:

- Upon request and for special quantities inserts can be supplied in different materials.
- Upon request and for special quantities crank handle body available in the colours indicated in the chart [page 807].



| Art. | L | R | H | D | d | m | c | A | B | h | H1 | d1 _{6H} | Q | dl | L1 | 📦 |
|------------------|-----|-----|----|----|------|----|----|----|------|------|----|------------------|----|----|----|-----|
| ● E518065.TM0801 | 86 | 65 | 46 | 27 | 19 | 29 | 13 | 17 | 9 | 10 | - | M8 | 18 | 20 | 56 | 94 |
| ● E518065.TM1001 | 86 | 65 | 46 | 27 | 19 | 29 | 13 | 17 | 9 | 10 | - | M10 | 17 | 20 | 56 | 90 |
| ● E518065.TM1201 | 86 | 65 | 46 | 27 | 19 | 29 | 13 | 17 | 9 | 10 | - | M12 | 17 | 20 | 56 | 90 |
| ● E518080.TM1201 | 108 | 80 | 50 | 34 | 24 | 32 | 13 | 22 | 11.5 | 10.5 | 53 | M12 | 22 | 21 | 66 | 172 |
| ● E518080.TM1401 | 108 | 80 | 50 | 34 | 24 | 32 | 13 | 22 | 11.5 | 10.5 | 53 | M14 | 23 | 21 | 66 | 164 |
| ● E518080.TM1601 | 108 | 80 | 50 | 34 | 24 | 32 | 13 | 22 | 11.5 | 10.5 | 53 | M16 | 20 | 21 | 66 | 154 |
| ● E518110.TM1201 | 138 | 110 | 50 | 34 | 24.5 | 33 | 13 | 22 | 11.5 | 11 | 54 | M12 | 20 | 21 | 66 | 181 |
| ● E518110.TM1401 | 138 | 110 | 50 | 34 | 24.5 | 33 | 13 | 22 | 11.5 | 11 | 54 | M14 | 20 | 21 | 66 | 195 |
| ● E518110.TM1601 | 138 | 110 | 50 | 34 | 24.5 | 33 | 13 | 22 | 11.5 | 11 | 54 | M16 | 20 | 21 | 66 | 198 |



Stock availability as % (🛒)
90% (●) - 40% (●) - 5% (●)

E513



INDEXED CRANK HANDLE WITH THREADED INSERT AND REVOLVING HANDLE M145

General features:

All unspecified features are identical to basic item E518.

Inserts:

Galvanised steel insert with female threaded hole (thread tolerance 6H).

Lateral handle:

Revolving handle art. M145 page (404).



| 🛒 | Art. | L | R | H | D | d | m | c | A | B | h | H1 | d16H | Q | dl | L1 | 📦 |
|---|----------------|-----|-----|----|----|------|----|----|----|------|------|----|------|----|----|----|-----|
| ● | E513065.TM0801 | 86 | 65 | 46 | 27 | 19 | 29 | 13 | 17 | 9 | 10 | - | M8 | 18 | 20 | 56 | 96 |
| ● | E513065.TM1001 | 86 | 65 | 46 | 27 | 19 | 29 | 13 | 17 | 9 | 10 | - | M10 | 17 | 20 | 56 | 92 |
| ● | E513065.TM1201 | 86 | 65 | 46 | 27 | 19 | 29 | 13 | 17 | 9 | 10 | - | M12 | 17 | 20 | 56 | 91 |
| ● | E513080.TM1201 | 108 | 80 | 50 | 34 | 24.5 | 32 | 13 | 22 | 11.5 | 10.5 | 53 | M12 | 22 | 23 | 66 | 177 |
| ● | E513080.TM1401 | 108 | 80 | 50 | 34 | 24.5 | 32 | 13 | 22 | 11.5 | 10.5 | 53 | M14 | 23 | 23 | 66 | 179 |
| ● | E513080.TM1601 | 108 | 80 | 50 | 34 | 24.5 | 32 | 13 | 22 | 11.5 | 10.5 | 53 | M16 | 20 | 23 | 66 | 169 |
| ● | E513110.TM1201 | 138 | 110 | 50 | 34 | 24.5 | 33 | 13 | 22 | 11.5 | 11 | 54 | M12 | 20 | 23 | 66 | 196 |
| ● | E513110.TM1401 | 138 | 110 | 50 | 34 | 24.5 | 33 | 13 | 22 | 11.5 | 11 | 54 | M14 | 20 | 23 | 66 | 200 |
| ● | E513110.TM1601 | 138 | 110 | 50 | 34 | 24.5 | 33 | 13 | 22 | 11.5 | 11 | 54 | M16 | 20 | 23 | 66 | 205 |

E517



INDEXED CRANK HANDLE WITH THREADED INSERT AND REVOLVING HANDLE M129

General features:

All unspecified features are identical to basic item E518.

Inserts:

Galvanised steel insert with female threaded hole (thread tolerance 6H).

Lateral handle:

Revolving handle art. M129 page (401).



| 🛒 | Art. | L | R | H | D | d | m | c | A | B | h | H1 | d16H | Q | dl | L1 | 📦 |
|---|----------------|-----|-----|----|----|------|----|----|----|------|------|----|------|----|----|----|-----|
| ● | E517065.TM0801 | 86 | 65 | 46 | 27 | 19 | 29 | 13 | 17 | 9 | 9.5 | - | M8 | 18 | 20 | 52 | 106 |
| ● | E517065.TM1001 | 86 | 65 | 46 | 27 | 19 | 29 | 13 | 17 | 9 | 9.5 | - | M10 | 17 | 20 | 52 | 102 |
| ● | E517065.TM1201 | 86 | 65 | 46 | 27 | 19 | 29 | 13 | 17 | 9 | 9.5 | - | M12 | 17 | 20 | 52 | 102 |
| ● | E517080.TM1201 | 108 | 80 | 50 | 34 | 24.5 | 32 | 13 | 22 | 11.5 | 10.5 | 53 | M12 | 22 | 23 | 62 | 187 |
| ● | E517080.TM1401 | 108 | 80 | 50 | 34 | 24.5 | 32 | 13 | 22 | 11.5 | 10.5 | 53 | M14 | 23 | 23 | 62 | 189 |
| ● | E517080.TM1601 | 108 | 80 | 50 | 34 | 24.5 | 32 | 13 | 22 | 11.5 | 10.5 | 53 | M16 | 20 | 23 | 62 | 179 |
| ● | E517110.TM1201 | 138 | 110 | 50 | 34 | 24.5 | 33 | 13 | 22 | 11.5 | 11 | 54 | M12 | 20 | 23 | 62 | 206 |
| ● | E517110.TM1401 | 138 | 110 | 50 | 34 | 24.5 | 33 | 13 | 22 | 11.5 | 11 | 54 | M14 | 20 | 23 | 62 | 198 |
| ● | E517110.TM1601 | 138 | 110 | 50 | 34 | 24.5 | 33 | 13 | 22 | 11.5 | 11 | 54 | M16 | 20 | 23 | 62 | 196 |

E519



INDEXED CRANK HANDLE WITH THREADED INSERT AND FOLDING HANDLE

Material:

Reinforced polyamide. Resistant to oils and greases.

Surface finish:

Satin.

Colour:

Black (RAL 9011).

Inserts:

Galvanised steel insert with female threaded hole (thread tolerance 6H).

Lateral insert:

Brass insert with threaded through hole.

Spring:

Stainless steel spring (Aisi 302).

Fixing screw:

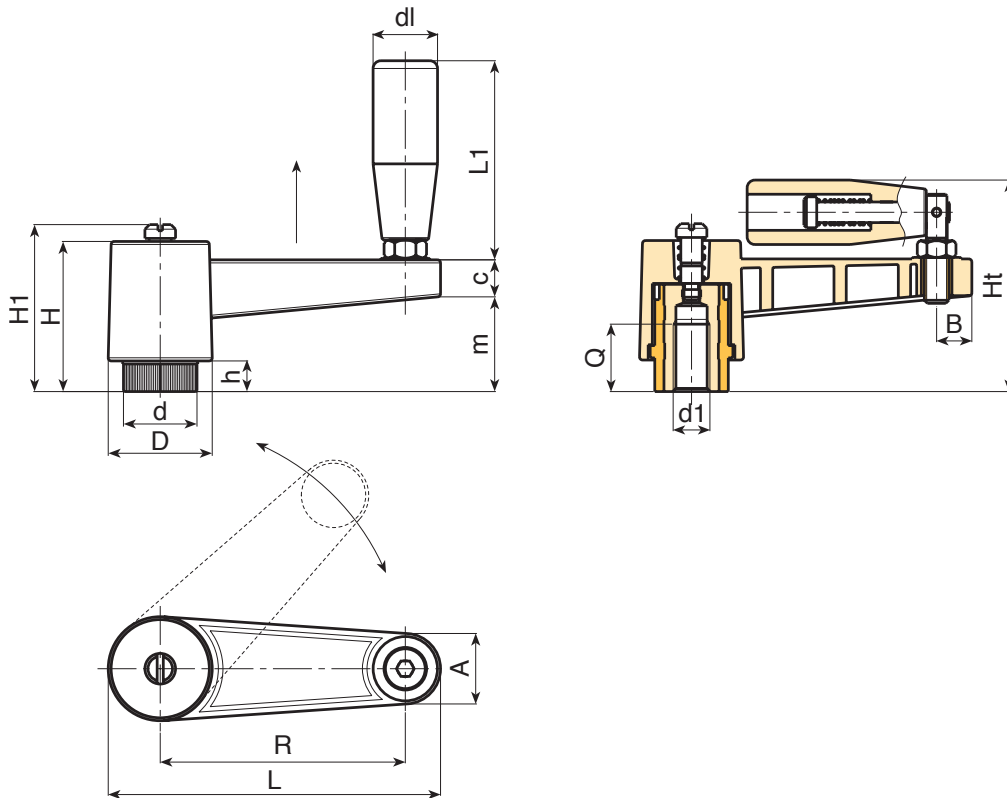
Black oxide treated steel screw with slotted head.

Lateral handle:

Revolving, folding handle art. M136 [page ()].

Special requests:

- Upon request and for special quantities inserts can be supplied in different materials.
- Upon request and for special quantities crank handle body available in the colours indicated in the chart [page 807].



| Art. | L | R | H | D | d | m | c | A | B | h | H1 | Ht | d1 _{6H} | Q | dl | L1 | 🛒 |
|------------------|-----|-----|----|----|------|----|----|----|------|------|----|------|------------------|----|----|----|-----|
| ● E519065.TM0801 | 86 | 65 | 46 | 27 | 19 | 29 | 13 | 17 | 9 | 10 | - | 66.5 | M8 | 18 | 20 | 54 | 104 |
| ● E519065.TM1001 | 86 | 65 | 46 | 27 | 19 | 29 | 13 | 17 | 9 | 10 | - | 66.5 | M10 | 17 | 20 | 54 | 102 |
| ● E519065.TM1201 | 86 | 65 | 46 | 27 | 19 | 29 | 13 | 17 | 9 | 10 | - | 66.5 | M12 | 17 | 20 | 54 | 100 |
| ● E519080.TM1201 | 108 | 80 | 50 | 34 | 24.5 | 32 | 13 | 22 | 11.5 | 10.5 | 53 | 75 | M12 | 22 | 25 | 75 | 185 |
| ● E519080.TM1401 | 108 | 80 | 50 | 34 | 24.5 | 32 | 13 | 22 | 11.5 | 10.5 | 53 | 75 | M14 | 23 | 25 | 75 | 180 |
| ● E519080.TM1601 | 108 | 80 | 50 | 34 | 24.5 | 32 | 13 | 22 | 11.5 | 10.5 | 53 | 75 | M16 | 20 | 25 | 75 | 174 |
| ● E519110.TM1201 | 138 | 110 | 50 | 34 | 24.5 | 33 | 13 | 22 | 11.5 | 11 | 53 | 75 | M12 | 20 | 25 | 75 | 199 |
| ● E519110.TM1401 | 138 | 110 | 50 | 34 | 24.5 | 33 | 13 | 22 | 11.5 | 11 | 53 | 75 | M14 | 20 | 25 | 75 | 220 |
| ● E519110.TM1601 | 138 | 110 | 50 | 34 | 24.5 | 33 | 13 | 22 | 11.5 | 11 | 53 | 75 | M16 | 20 | 25 | 75 | 225 |



E521



INDEXED CRANK HANDLE WITH SMOOTH BORE INSERT AND FOLDING HANDLE

Material:

Reinforced polyamide. Resistant to oils and greases.

Surface finish:

Satin.

Colour:

Black (RAL 9011).

Inserts:

Galvanised steel insert with blind smooth bore (bore tolerance H10).

Lateral insert:

Brass insert with threaded through hole.

Spring:

Stainless steel spring (Aisi 302).

Fixing screw:

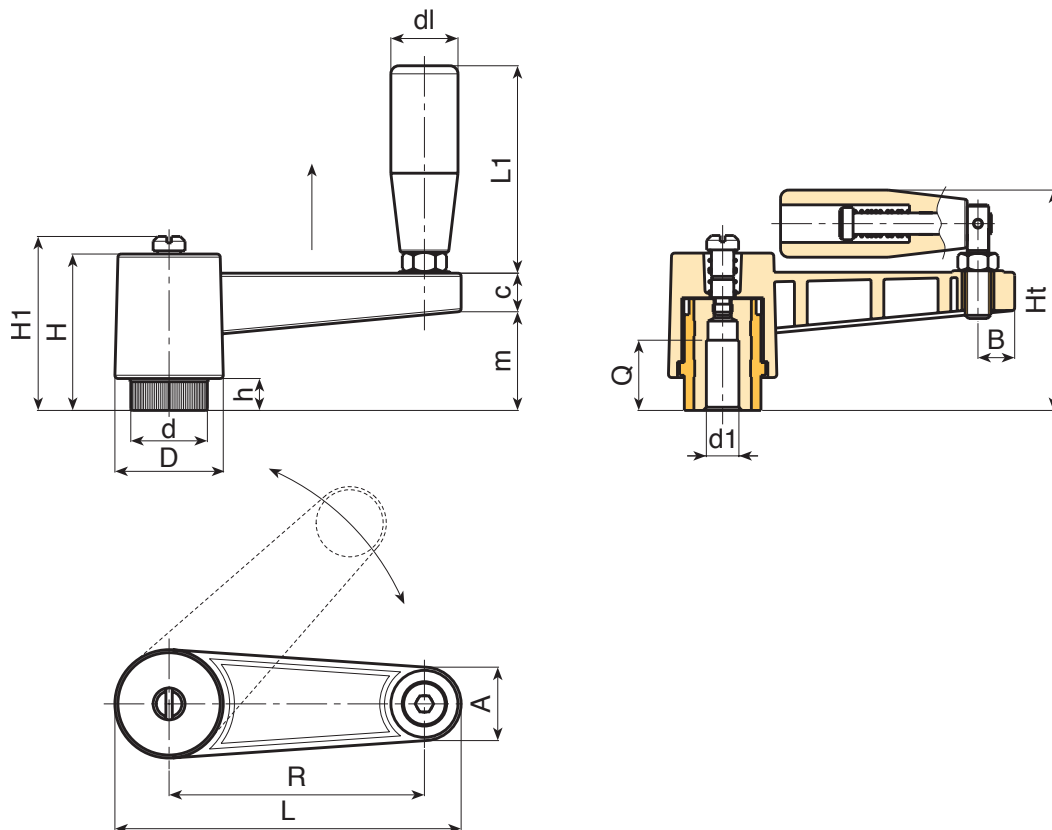
Black oxide treated steel screw with slotted head.

Lateral handle:

Revolving, folding handle art. M136 [page ()].

Special requests:

- Upon request and for special quantities inserts can be supplied in different materials.
- Upon request and for special quantities crank handle body available in the colours indicated in the chart [page 807].



| Art. | L | R | H | D | d | m | c | A | B | h | H1 | Ht | d1 _{H10} | Q | dl | L1 | g |
|----------------|-----|-----|----|----|------|----|----|----|------|------|----|------|-------------------|----|----|----|-----|
| E521065.TP0501 | 86 | 65 | 46 | 27 | 19 | 29 | 13 | 17 | 9 | 10 | - | 66.5 | 05 | 22 | 20 | 54 | 105 |
| E521080.TP0501 | 108 | 80 | 50 | 34 | 24.5 | 32 | 13 | 22 | 11.5 | 10.5 | 53 | 75 | 05 | 24 | 25 | 75 | 190 |
| E521110.TP0501 | 138 | 110 | 50 | 34 | 24.5 | 33 | 13 | 22 | 11.5 | 11 | 54 | 75 | 05 | 28 | 25 | 75 | 220 |

E520



INDEXED CRANK HANDLE WITH SMOOTH BORE INSERT AND REVOLVING HANDLE

Material:

Reinforced polyamide. Resistant to oils and greases.

Surface finish:

Satin.

Colour:

Black (RAL 9011).

Inserts:

Galvanised steel insert with blind smooth bore (bore tolerance H10).

Lateral insert:

Brass insert with threaded through hole.

Spring:

Stainless steel spring (Aisi 302).

Lateral handle:

E520: Revolving handle art. M144 page (400).

E511: Revolving handle art. M145 page (404).

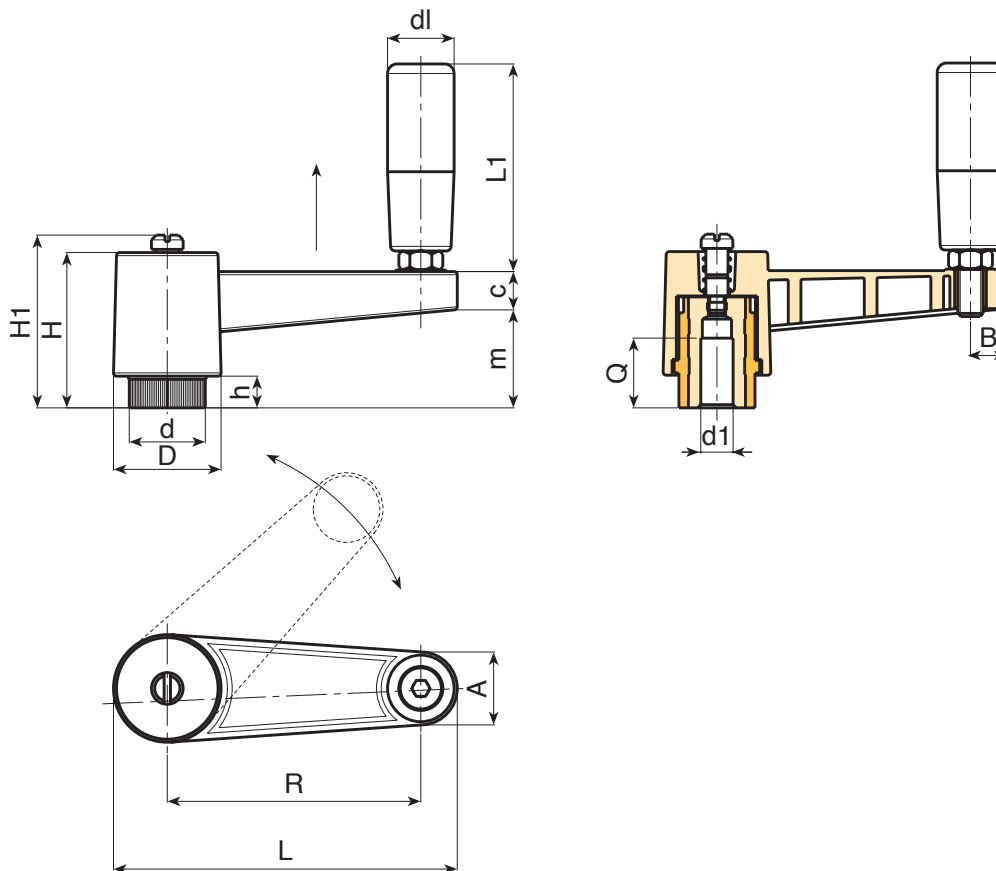
E516: Revolving handle art. M129 page (401).

Fixing screw:

Black oxide treated steel screw with slotted head.

Special requests:

- Upon request and for special quantities inserts can be supplied in different materials.
- Upon request and for special quantities lever body available in the colours indicated in the chart [page 807].



| Art. | L | R | H | D | d | m | c | A | B | h | H1 | d1 _{H10} | Q | dl | L1 | **non |
|----------------|-----|-----|----|----|------|----|----|----|------|------|----|-------------------|----|------|----|-------|
| E520065.TP0501 | 86 | 65 | 46 | 27 | 19 | 29 | 13 | 17 | 9 | 10 | - | 05 | 22 | 20 | 56 | 83 |
| E520080.TP0501 | 108 | 80 | 50 | 34 | 24.5 | 32 | 13 | 22 | 11.5 | 10.5 | 53 | 05 | 24 | 21.5 | 66 | 177 |
| E520110.TP0501 | 138 | 110 | 50 | 34 | 24.5 | 33 | 13 | 22 | 11.5 | 11 | 54 | 05 | 28 | 21.5 | 66 | 200 |

E511



INDEXED CRANK HANDLE WITH SMOOTH BORE INSERT AND REVOLVING HANDLE M145

General features:

All unspecified features are identical to basic item E520.

Inserts:

Galvanised steel insert with blind smooth bore (bore tolerance H10).

Lateral handle:

Revolving handle art. M145 page (404).



| 🛒 | Art. | L | R | H | D | d | m | c | A | B | h | H1 | d1 _{H10} | Q | dl | L1 | 📦 |
|---|----------------|-----|-----|----|----|------|----|----|----|------|------|----|-------------------|----|----|----|-----|
| ● | E511065.TP0501 | 86 | 65 | 46 | 27 | 19 | 29 | 13 | 17 | 9 | 10 | - | 05 | 22 | 20 | 56 | 92 |
| ● | E511080.TP0501 | 108 | 80 | 50 | 34 | 24.5 | 32 | 13 | 22 | 11.5 | 10.5 | 53 | 05 | 24 | 23 | 66 | 187 |
| ● | E511110.TP0501 | 138 | 110 | 50 | 34 | 24.5 | 33 | 13 | 22 | 11.5 | 11 | 54 | 05 | 28 | 23 | 66 | 205 |

E516



INDEXED CRANK HANDLE WITH SMOOTH BORE INSERT AND REVOLVING HANDLE M129

General features:

All unspecified features are identical to basic item E520.

Inserts:

Galvanised steel insert with blind smooth bore (bore tolerance H10).

Lateral handle:

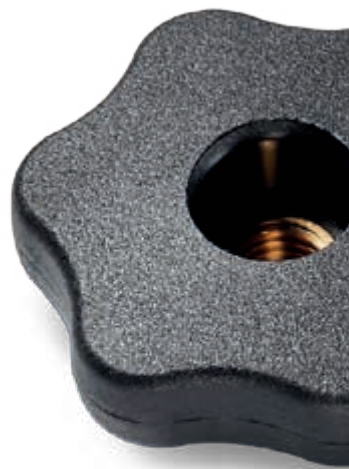
Revolving handle art. M129 page (401).



| 🛒 | Art. | L | R | H | D | d | m | c | A | B | h | H1 | d1 _{H10} | Q | dl | L1 | 📦 |
|---|----------------|-----|-----|----|----|------|----|----|----|------|------|----|-------------------|----|----|----|-----|
| ● | E516065.TP0501 | 86 | 65 | 46 | 27 | 19 | 29 | 13 | 17 | 9 | 10 | - | 05 | 22 | 20 | 52 | 95 |
| ● | E516080.TP0501 | 108 | 80 | 50 | 34 | 24.5 | 32 | 13 | 22 | 11.5 | 10.5 | 53 | 05 | 24 | 23 | 62 | 197 |
| ● | E516110.TP0501 | 138 | 110 | 50 | 34 | 24.5 | 33 | 13 | 22 | 11.5 | 11 | 54 | 05 | 28 | 23 | 62 | 207 |



THE SWEET
OF THINGS
WELL: **SIM**
AND **PLEA**



BOTECO[®]