



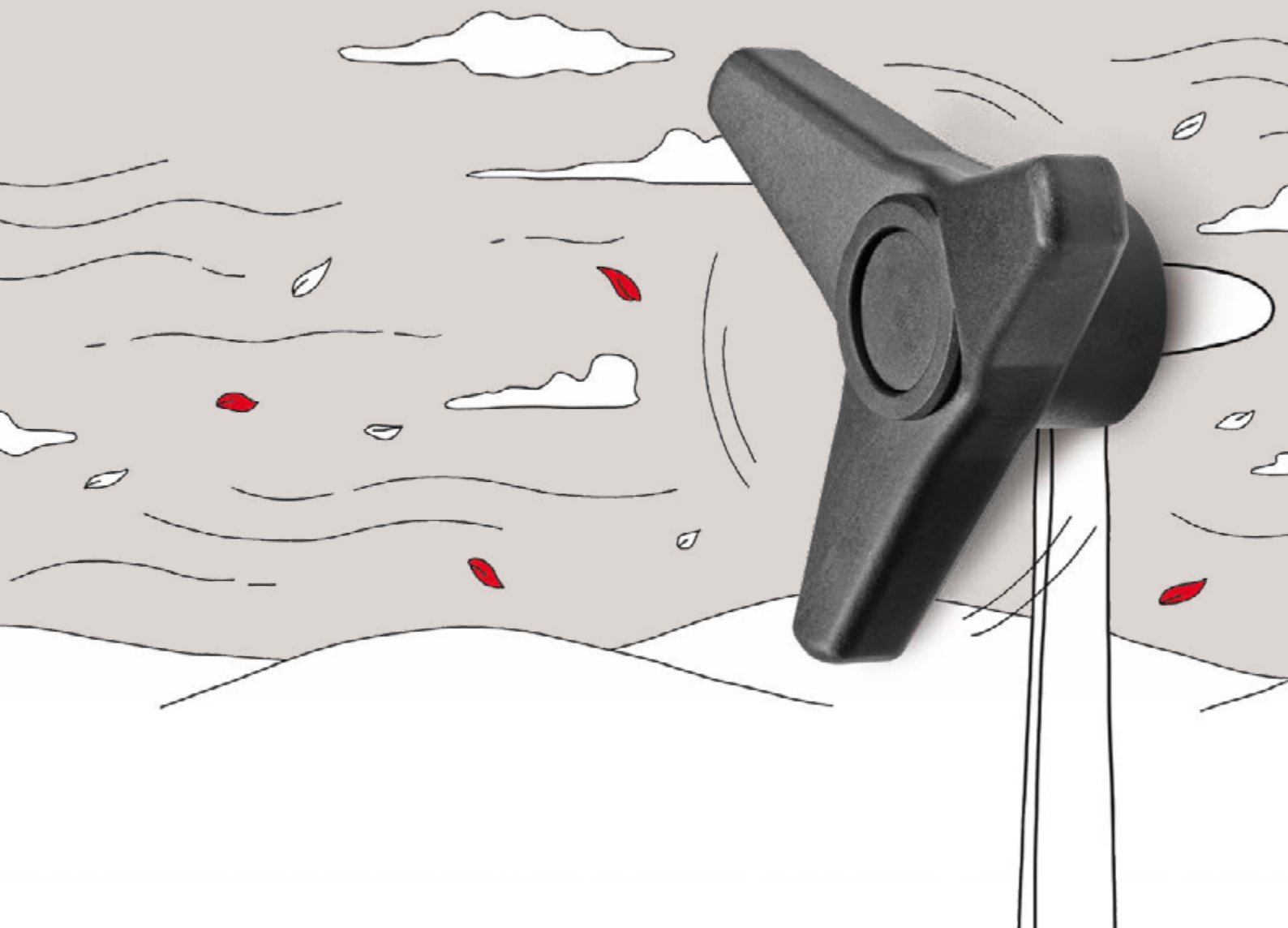
**BOTECO®**

**YOUR MECHANICAL COMPONENT**

## **GROUP - F**

### **SOLID LOCKING HANDWHEELS**





Give your **PROJECTS** a boost of energy!



**BOTECO**<sup>®</sup>

# F210



PF

UL94  
HB

RoHS  
COMPLIANT

## SOLID BAKELITE CROSS KNOB WITH FEMALE THREADED INSERT

### Materials:

Phenolic resin.  
Resistant to oils and greases.  
Resistant to high temperatures.

### Surface finish:

Glossy.

### Colour:

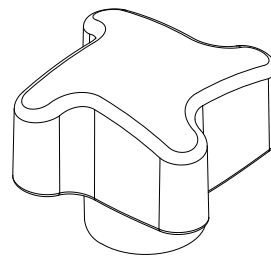
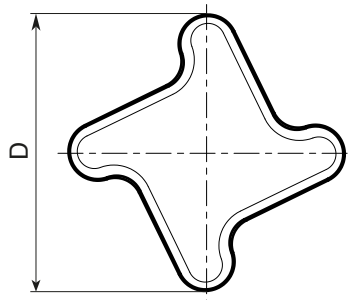
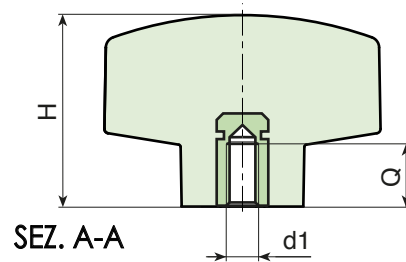
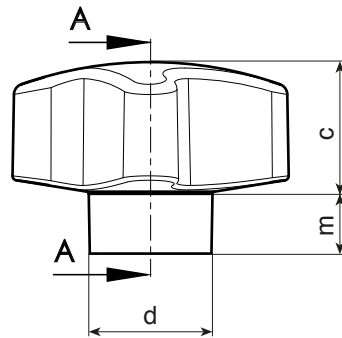
Black (RAL 9011).

### Inserts:

Brass insert with female threaded hole (thread tolerance 6H).

### Special requests:

- None.



	art.	D	d	H	m	c	d1 <sub>6H</sub>	Q	g
●	F21030.BM0601	30	16	22	5,5	16,5	M6	10	0
●	F21040.BM0601	40	21	26	5	21	M6	10	0
●	F21040.BM0801	40	21	26	5	21	M8	13.5	28
●	F21040.BM1001	40	21	26	5	21	M10	15	-
●	F21050.BM0801	50	23	31	7	24	M8	15	-
●	F21050.BM1001	50	23	31	7	24	M10	15	-
●	F21050.BM1201	50	23	31	7	24	M12	18	-

# F200

## SOLID BAKELITE LOBED KNOB WITH FEMALE THREADED INSERT



### Materials:

Phenolic resin.  
Resistant to oils and greases.  
Resistant to high temperatures.

### Surface finish:

Glossy.

### Colour:

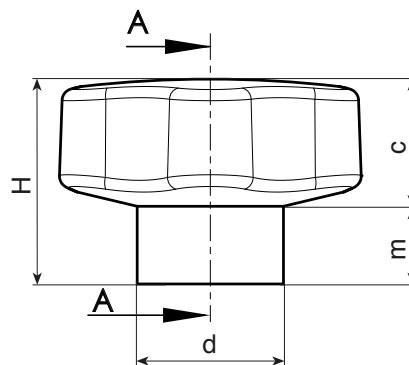
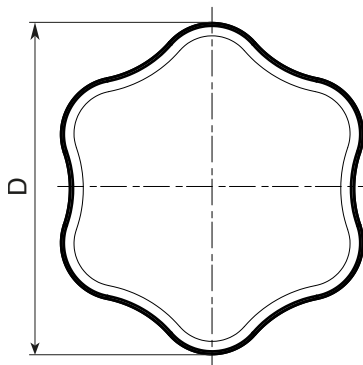
Black (RAL 9011).

### Inserts:

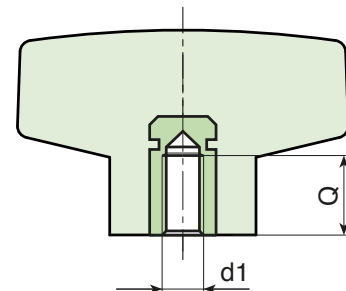
Brass insert with female threaded hole (thread tolerance 6H).

### Special requests:

- None.



SEZ. A-A



art.	D	d	H	m	c	d1 <sub>6H</sub>	Q	g
F20025.BM0401	25	15	20	9	11	M4	7,5	0
F20025.BM0501	25	15	20	9	11	M5	8	0
F20025.BM0601	25	15	20	9	11	M6	10	0
F20030.BM0401	30	17	25	11	14	M4	7,5	0
F20030.BM0501	30	17	25	11	14	M5	10	0
F20030.BM0401	30	17	25	11	14	M4	7,5	0
F20040.BM0501	40	21	30	13	17	M5	10	0
F20040.BM0601	40	21	30	13	17	M6	10	0
F20040.BM0801	40	21	30	13	17	M8	13,5	0
F20040.BM1001	40	21	30	13	17	M10	15	0
F20050.BM0801	50	23	33	13	20	M8	15	0
F20050.BM1001	50	23	33	13	20	M10	15	0
F20050.BM1201	50	23	33	13	20	M12	18	0
F20060.BM0801	60	28	37	15	22	M8	15	0
F20060.BM1001	60	28	37	15	22	M10	15	0
F20060.BM1201	60	28	37	15	22	M12	18	0
F20060.BM1401	60	28	37	15	22	M14	18	0
F20070.BM1001	70	30	41	17	24	M10	15	0
F20070.BM1201	70	30	41	17	24	M12	18	0
F20070.BM1401	70	30	41	17	24	M14	20	0
F20070.BM1601	70	30	41	17	24	M16	20	0
F20080.BM1201	80	32	47	19	28	M12	18	0
F20080.BM1401	80	32	47	19	28	M14	20	0
F20080.BM1601	80	32	47	19	28	M16	20	0

# F202



## SOLID BAKELITE LOBED KNOB WITH THREADED STUD

### Materials:

Phenolic resin.  
Resistant to oils and greases.  
Resistant to high temperatures.

### Surface finish:

Glossy.

### Colour:

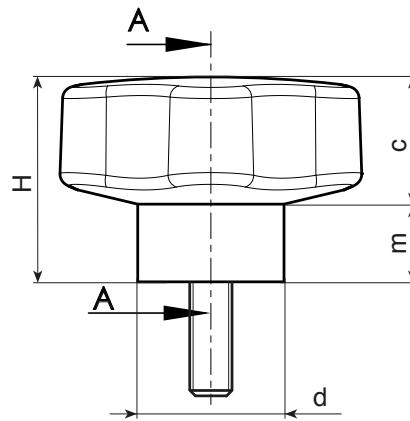
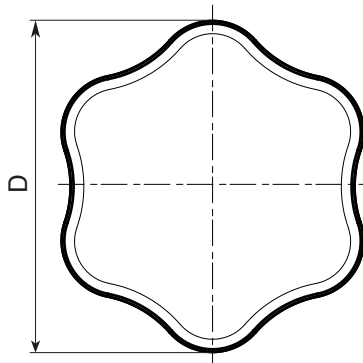
Black (RAL 9011).

### Inserts:

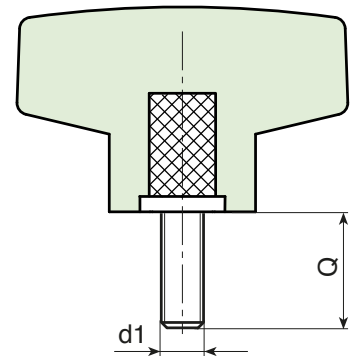
Galvanised steel threaded stud (thread tolerance 6g)

### Special requests:

- None.



SEZ. A-A



art.	D	d	H	m	c	LM	d1 <sub>6g</sub>	Q	g
F20225.BM04X..01	25	25	20	9	11	60	M4	10-20-30-40-50-60	0
F20225.BM05X..01	25	25	20	9	11	60	M5	10-20-30-40-50-60	-
F20225.BM06X..01	25	25	20	9	11	60	M6	10-20-30-40-50-60	0
F20230.BM04X..01	30	30	25	11	14	60	M4	10-20-30-40-50-60	0
F20230.BM05X..01	30	30	25	11	14	60	M5	10-20-30-40-50-60	0
F20230.BM06X..01	30	30	25	11	14	60	M6	10-20-30-40-50-60	0
F20240.BM05X..01	40	40	30	13	17	60	M5	10-20-30-40-50-60	0
F20240.BM06X..01	40	40	30	13	17	60	M6	10-20-30-40-50-60	0
F20240.BM08X..01	40	40	30	13	17	60	M8	10-20-30-40-50-60	0
F20240.BM10X..01	40	40	30	13	17	60	M10	10-20-30-40-50-60	0
F20250.BM06X..01	50	50	33	13	20	60	M6	10-20-30-40-50-60	0
F20250.BM08X..01	50	50	33	13	20	60	M8	10-20-30-40-50-60	0
F20250.BM10X..01	50	50	33	13	20	60	M10	10-20-30-40-50-60	0
F20250.BM12X..01	50	50	33	13	20	60	M12	10-20-30-40-50-60	0
F20260.BM08X..01	60	60	37	15	22	60	M8	10-20-30-40-50-60	0
F20260.BM10X..01	60	60	37	15	22	60	M10	10-20-30-40-50-60	0
F20260.BM12X..01	60	60	37	15	22	60	M12	10-20-30-40-50-60	0
F20260.BM14X..01	60	60	37	15	22	60	M14	10-20-30-40-50-60	0
F20270.BM10X..01	70	70	41	17	24	60	M10	10-20-30-40-50-60	0
F20270.BM12X..01	70	70	41	17	24	60	M12	10-20-30-40-50-60	0
F20270.BM14X..01	70	70	41	17	24	60	M14	10-20-30-40-50-60	0
F20270.BM16X..01	70	70	41	17	24	60	M16	10-20-30-40-50-60	0
F20280.BM12X..01	80	80	47	19	28	60	M12	10-20-30-40-50-60	0
F20280.BM14X..01	80	80	47	19	28	60	M14	10-20-30-40-50-60	0
F20280.BM16X..01	80	80	47	19	28	60	M16	10-20-30-40-50-60	0

Enter the selected stud length in place of the two dots . . in the item code.

A.R. = Upon request, for a minimum of 150 pieces.

LM = Maximum mouldable length.



Stock availability as % (🛒)  
90% (●) - 40% (●) - 5% (●)

# F204



## SOLID BAKELITE LOBED KNOB WITH INSERT AND THREADED THROUGH HOLE

### Materials:

Phenolic resin.  
Resistant to oils and greases.  
Resistant to high temperatures.

### Surface finish:

Glossy.

### Colour:

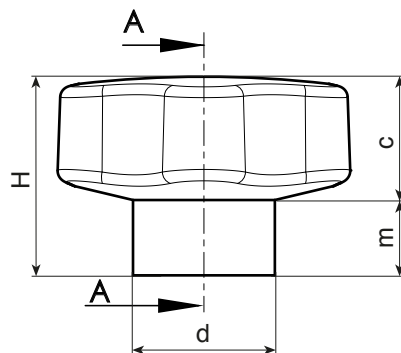
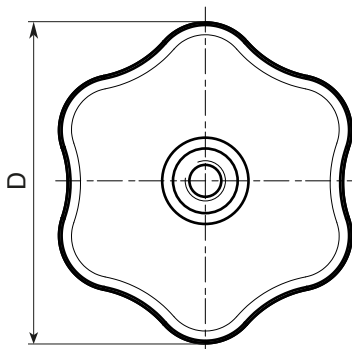
Black (RAL 9011).

### Inserts:

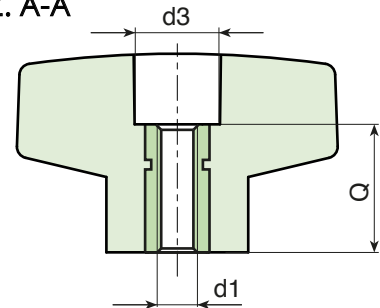
Brass insert with threaded through hole (thread tolerance 6H).

### Special requests:

- None.



SEZ. A-A



🛒	art.	D	d	H	m	c	d3	d1 <sub>6H</sub>	Q	📦
●	F20440.BM0601	40	21	30	13	17	13	M6	17	27
●	F20440.BM0801	40	21	30	13	17	13	M8	17	26
●	F20440.BM1001	40	21	30	13	17	13	M10	17	24
●	F20460.BM1001	60	28	37	15	22	15	M10	26	88
●	F20460.BM1201	60	28	37	15	22	15	M12	26	85

# F110

## 6-LOBE SOLID KNOB WITH THREADED INSERT



### Materials:

Reinforced polyamide.  
Resistant to oils and greases.

### Surface finish:

Satin.

### Colour:

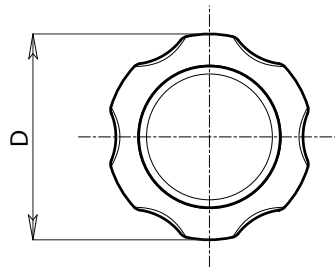
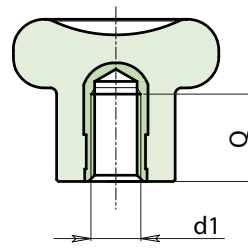
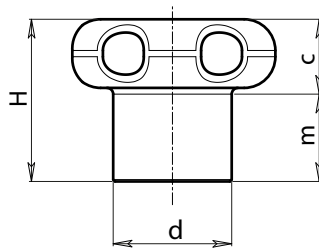
Black (RAL 9011).

### Inserts:

Brass insert with female threaded hole (thread tolerance 6H).

### Special Requests:

- Upon request and for special quantities inserts can be supplied in different materials.
- Upon request and for special quantities available in the colours indicated in the chart (attention: reduced range) [page 807].



🛒	Art.	D	d	H	m	c	d1 <sub>6H</sub>	Q	g
●	F110022.TM0401	22	12	17.5	11	6.5	M4	8	5.5
●	F110022.TM0501	22	12	17.5	11	6.5	M5	8	6.5
●	F110027.TM0501	27	14	22	13	9	M5	10	9
●	F110027.TM0601	27	14	22	13	9	M6	10	9.5
●	F110033.TM0801	33	19	26	15	11	M8	13	16
●	F110033.TM1001	33	19	26	15	11	M10	13	17

# F111

## 6-LOBE SOLID KNOB WITH THREADED STUD



### Materials:

Reinforced polyamide.  
Resistant to oils and greases.

### Surface finish:

Satin.

### Colour:

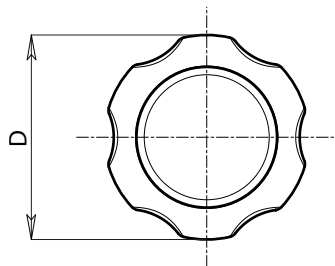
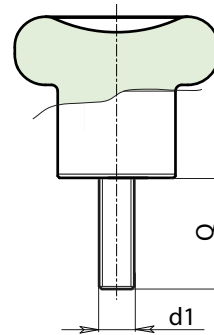
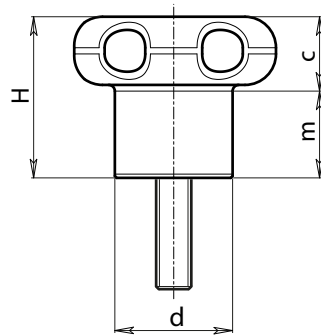
Black (RAL 9011).

### Inserts:

Galvanised steel threaded stud (thread tolerance 6g).

### Special Requests:

- Upon request and for special quantities inserts can be supplied with customised lengths.
- Upon request and for special quantities inserts can be supplied in different materials.
- Upon request and for special quantities available in the colours indicated in the chart (attention: reduced range) [page 807].



🛒	Art.	D	d	H	m	c	LM	d <sub>16g</sub>	Q	📦
●	F111022.TM04X..01	22	12	17.5	11	6.5	50	M4	16-30	6-7
●	F111022.TM05X..01	22	12	17.5	11	6.5	50	M5	16-30	7-8
●	F111027.TM05X..01	27	14	22	13	9	60	M5	20-40	10-11
●	F111027.TM06X..01	27	14	22	13	9	60	M6	20-40	12-13
●	F111033.TM08X..01	33	19	26	15	11	70	M8	20-40	18-22
●	F111033.TM10X..01	33	19	26	15	11	70	M10	20-50	24-27

Enter the selected stud length in place of the two dots . . in the item code.

LM = maximum mouldable length.



Stock availability as % (🛒)  
90% (●) - 40% (●) - 5% (●)



# F175



## 6-LOBE SOLID HANDWHEEL WITH FEMALE THREADED INSERT

### Materials:

Reinforced polyamide.  
Resistant to oils and greases.

### Surface finish:

Satin.

### Colour:

Black (RAL 9011).

### Inserts:

#### Version F175:

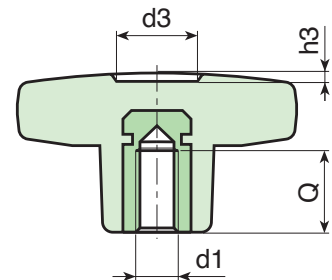
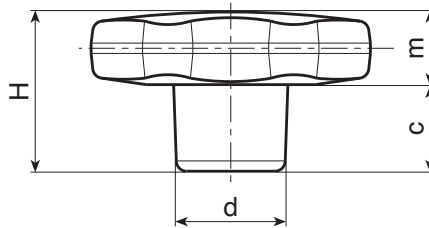
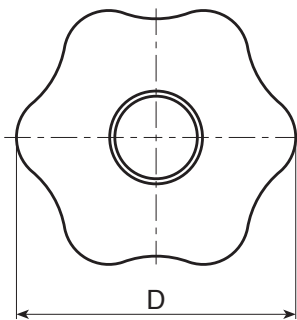
Brass insert with female threaded hole (thread tolerance 6H).

#### Version F175CIN:

Stainless steel insert with female threaded hole (Aisi 303) (thread tolerance 6H).

### Special Requests:

- Upon request and for special quantities inserts can be supplied in different materials.
- Upon request and for special quantities available in the colours indicated in the chart (attention: reduced range) [page 807].



### Version F175: with brass insert.

Art.	D	H	d	c	m	d3	h3	d1 <sub>6H</sub>	Q	g
F17530.TM0401	30	22	15	11	11	9	1.5	M4	15	11.5
F17530.TM0501	30	22	15	11	11	9	1.5	M5	14	11.5
F17530.TM0601	30	22	15	11	11	9	1.5	M6	10	12
F17530.TM0801	30	22	15	11	11	9	1.5	M8	14	13.5
F17530.TM1001	30	22	15	11	11	9	1.5	M10	14	14
F17540.TM0501	40	24.5	17	12	12.5	12	1	M5	14	22
F17540.TM0601	40	24.5	17	12	12.5	12	1	M6	18	22
F17540.TM0801	40	24.5	17	12	12.5	12	1	M8	14	21.5
F17540.TM1001	40	24.5	17	12	12.5	12	1	M10	14	21
F17550.TM0601	50	29	20	15.5	13.5	14.5	1.5	M6	16	36
F17550.TM0801	50	29	20	15.5	14	14.5	1.5	M8	14	36
F17550.TM1001	50	29	20	15.5	13.5	14.5	1.5	M10	20	37
F17550.TM1201	50	29	20	15.5	13.5	14.5	1.5	M12	18	39
F17560.TM0801	60	34	24	16	18	18	1.5	M8	19	59
F17560.TM1001	60	34	24	16	18	18	1.5	M10	21	59
F17560.TM1201	60	34	24	16	18	18	1.5	M12	18	62
F17560.TM1401	60	34	24	16	18	18	1.5	M14	19	63

### Version F175CIN: with stainless steel insert (Aisi 303).

Art.	D	H	d	c	m	d3	h3	d1 <sub>6H</sub>	Q	g
F17530.TM0501CIN	30	22	15	11	11	9	1.5	M5	14	11.5
F17530.TM0601CIN	30	22	15	11	11	9	1.5	M6	10	12
F17530.TM0801CIN	30	22	15	11	11	9	1.5	M8	14	13.5
F17540.TM0601CIN	40	24.5	17	12	12.5	12	1	M6	16	22
F17540.TM0801CIN	40	24.5	17	12	12.5	12	1	M8	14	21.5
F17540.TM1001CIN	40	24.5	17	12	12.5	12	1	M10	14	21
F17550.TM0801CIN	50	29	20	14	15	14.5	1.5	M8	14	36
F17550.TM1001CIN	50	29	20	14	15	14.5	1.5	M10	14	37
F17550.TM1201CIN	50	29	20	14	15	14.5	1.5	M12	13	39
F17560.TM0801CIN	60	34	24	16	18	18	1.5	M8	19	59
F17560.TM1001CIN	60	34	24	16	18	18	1.5	M10	21	59
F17560.TM1201CIN	60	34	24	16	18	18	1.5	M12	18	62



Stock availability as % (🛒)  
90% (●) - 40% (●) - 5% (●)

# F176

## 6-LOBE SOLID HANDWHEEL WITH INSERT AND BORE



### Materials:

Reinforced polyamide.  
Resistant to oils and greases.

### Surface finish:

Satin.

### Colour:

Black (RAL 9011).

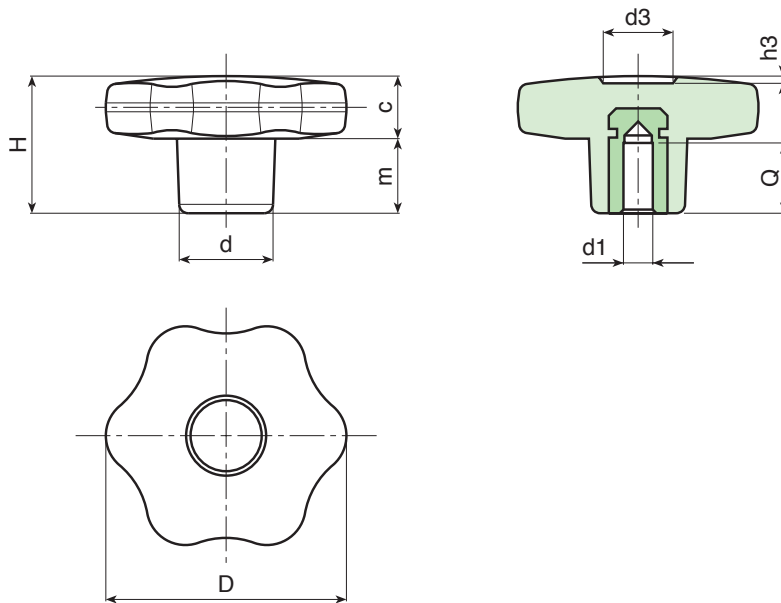
### Inserts:

Brass insert with blind smooth bore (bore tolerance H7).  
(\* Galvanised steel insert with blind smooth bore (bore tolerance H10).

**ATTENTION: bore cannot be widened.**

### Special Requests:

- Upon request and for special quantities inserts can be supplied in different materials.
- Upon request and for special quantities available in the colours indicated in the chart (attention: reduced range) [page 807].



Art.	D	H	d	c	m	d3	h3	d1 <sub>H7</sub>	Q	g
● F17630.TD0601	30	22	15	11	11	9	1.5	6	15	17
● F17630.TD0801	30	22	15	11	11	9	1.5	8	15	19
● F17640.TD0601	40	24.5	17	12	12.5	12	1	6	15	24
● F17640.TD0801	40	24.5	17	12	12.5	12	1	8	15	26
● F17640.TD1001	40	24.5	17	12	12.5	12	1	10	17	28
● F17650.TD0601	50	29	20	14	15	14.5	1.5	6	15	39
● F17650.TD0801	50	29	20	14	15	14.5	1.5	8	15	41
● F17650.TD1001	50	29	20	14	15	14.5	1.5	10	17	42
● F17660.TD0801	60	34	24	16	18	18	1.5	(* )08	18	78
● F17660.TD1001	60	34	24	16	18	18	1.5	(* )10	25	73
● F17660.TD1201	60	34	24	16	18	18	1.5	(* )12	22	75

# F177



## 6-LOBE SOLID HANDWHEEL WITH THREADED THROUGH-HOLE INSERT

### Materials:

Reinforced polyamide.  
Resistant to oils and greases.

### Surface finish:

Satin.

### Colour:

Black (RAL 9011).

### Inserts:

#### Version F177:

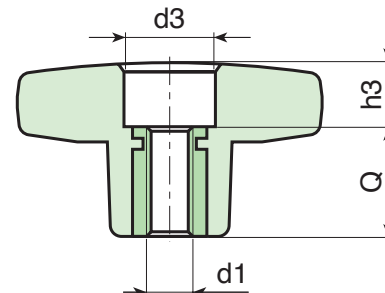
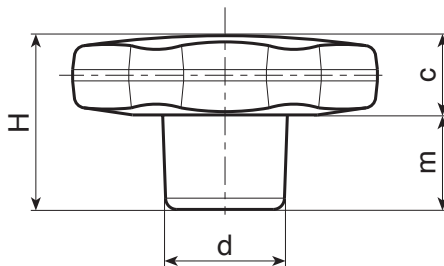
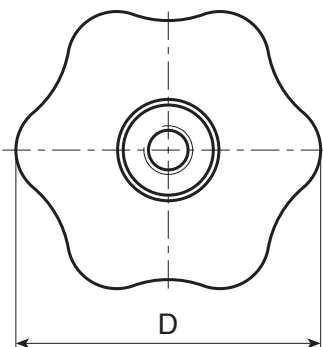
Brass insert with threaded through hole (thread tolerance 6H).

#### Version F177PIN:

Stainless steel insert with threaded through hole (Aisi 303) (thread tolerance 6H).

### Special Requests:

- Upon request and for special quantities inserts can be supplied in different materials.
- Upon request and for special quantities available in the colours indicated in the chart (attention: reduced range) [page 807].



### Version F177: with brass insert.

Art.	D	H	d	c	m	d3	h3	d1 <sub>6H</sub>	Q	g
F17730.TM0501	30	22	15	11	11	11	4	M5	18	12
F17730.TM0601	30	22	15	11	11	11	4	M6	18	13
F17730.TM0801	30	22	15	11	11	11	4	M8	18	13
F17730.TM1001	30	22	15	11	11	11	4	M10	18	14
F17740.TM0601	40	24.5	17	12	12.5	12	6	M6	18	20
F17740.TM0801	40	24.5	17	12	12.5	12	6	M8	18	21
F17740.TM1001	40	24.5	17	12	12.5	12	6	M10	18	22
F17750.TM0601	50	29	20	14	15	14	11	M6	18	33
F17750.TM0801	50	29	20	14	15	14	11	M8	18	34
F17750.TM1001	50	29	20	14	15	14	11	M10	18	35
F17750.TM1201	50	29	20	14	15	14	11	M12	18	35
F17760.TM0801	60	34	24	16	18	15	16	M8	18	54
F17760.TM1001	60	34	24	16	18	15	16	M10	18	55
F17760.TM1201	60	34	24	16	18	15	16	M12	18	55
F17760.TM1401	60	34	24	16	18	15	16	M14	18	56

### Version F177PIN: with stainless steel insert (Aisi 303).

Art.	D	H	d	c	m	d3	h3	d1 <sub>6H</sub>	Q	g
F17730.TM0501PIN	30	22	15	11	11	11	4	M5	18	12
F17730.TM0601PIN	30	22	15	11	11	11	4	M6	18	13
F17730.TM0801PIN	30	22	15	11	11	11	4	M8	18	13
F17740.TM0601PIN	40	24.5	17	12	12.5	12	6	M6	18	20
F17740.TM0801PIN	40	24.5	17	12	12.5	12	6	M8	18	21
F17740.TM1001PIN	40	24.5	17	12	12.5	12	6	M10	18	22
F17750.TM0801PIN	50	29	20	14	15	14	11	M8	18	34
F17750.TM1001PIN	50	29	20	14	15	14	11	M10	18	35
F17750.TM1201PIN	50	29	20	14	15	14	11	M12	18	35
F17760.TM0801PIN	60	34	24	16	18	15	16	M8	18	54
F17760.TM1001PIN	60	34	24	16	18	15	16	M10	18	55
F17760.TM1201PIN	60	34	24	16	18	15	16	M12	18	55



Stock availability as % (🛒)  
90% (●) - 40% (●) - 5% (●)

# F178

## 6-LOBE SOLID HANDWHEEL WITH THREADED STUD



### Materials:

Reinforced polyamide.  
Resistant to oils and greases.

### Surface finish:

Satin.

### Colour:

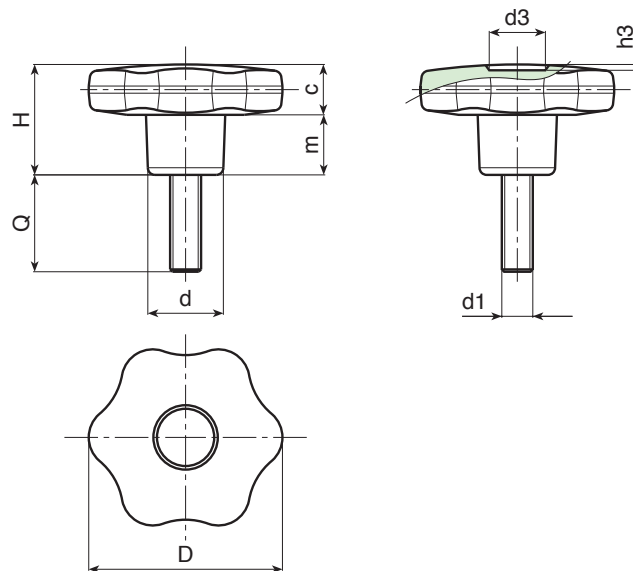
Black (RAL 9011).

### Inserts:

Galvanised steel threaded stud (thread tolerance 6g).

### Special Requests:

- Upon request and for special quantities inserts can be supplied with customised lengths.
- Upon request and for special quantities inserts can be supplied in different materials.
- Upon request and for special quantities available in the colours indicated in the chart (attention: reduced range) [page 807].



Art.	D	H	d	c	m	d3	h3	LM	d1 <sub>6g</sub>	Q	g
F17830.TM05X..01	30	22	15	11	11	9	1.5	80	M5	10-16-20-30-40	13-14-15-16-17
F17830.TM06X..01	30	22	15	11	11	9	1.5	80	M6	10-16-20-25-30-40	15-16-17-17,5-18-19
F17830.TM08X..01	30	22	15	11	11	9	1.5	80	M8	16-20-30-40	19-21-25-28
F17830.TM10X..01	30	22	15	11	11	9	1.5	80	M10	20-30-40	28-33-39
F17840.TM06X..01	40	24.5	17	12	12.5	12	1	130	M6	16-20-30-40	25-25-27-28
F17840.TM08X..01	40	24.5	17	12	12.5	12	1	130	M8	16-20-25-30-35-40-45-50	28-30-31-33-34-36-38-39
F17840.TM10X..01	40	24.5	17	12	12.5	12	1	130	M10	20-30-40-50	37-41-45-49
F17850.TM08X..01	50	29	20	14	15	14.5	1.5	130	M8	15-20-30-40	48-49-52-55
F17850.TM10X..01	50	29	20	14	15	14.5	1.5	130	M10	20-25-30-40-50	55-57-60-61-64
F17850.TM12X..01	50	29	20	14	15	14.5	1.5	130	M12	20-30-40-50	63-67-72-77
F17860.TM08X..01	60	34	24	16	18	18	1.5	130	M8	30-40	71-74
F17860.TM10X..01	60	34	24	16	18	18	1.5	130	M10	20-30-40-50	74-80-85-88
F17860.TM12X..01	60	34	24	16	18	18	1.5	130	M12	20-30-40-50	95-102-109-116
F17860.TM14X..01	60	34	24	16	18	18	1.5	130	M14	A.R.	-

Enter the selected stud length in place of the two dots . . in the item code. Customised stud length available for a minimum of 150 pieces.

A.R. = Upon request.

LM = Maximum mouldable length.



Stock availability as % (🛒)  
90% (●) - 40% (●) - 5% (●)

# F178CIN



## 6-LOBE SOLID HANDWHEEL WITH THREADED STAINLESS STEEL STUD

INOX

### Materials:

Reinforced polyamide.  
Resistant to oils and greases.

### Surface finish:

Satin.

### Colour:

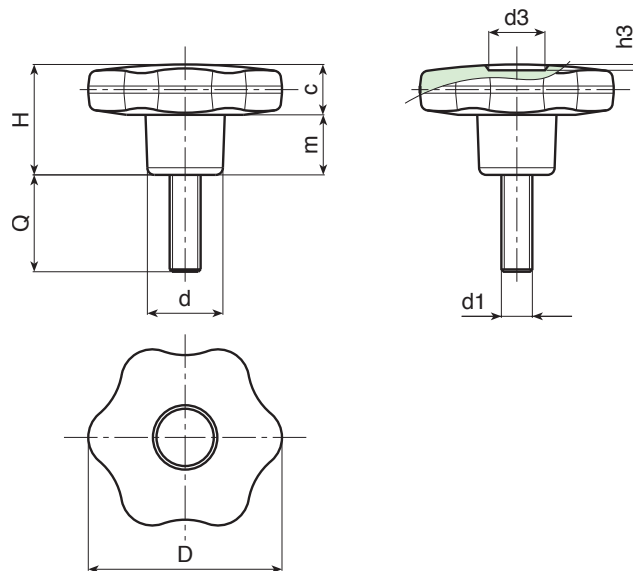
Black (RAL 9011).

### Inserts:

Threaded stainless steel stud (Aisi 304) (thread tolerance 6g).

### Special Requests:

- Upon request and for special quantities inserts can be supplied with customised lengths.
- Upon request and for special quantities available in the colours indicated in the chart (attention: reduced range) [page 807].



INOX

Art.	D	H	d	c	m	d3	h3	LM	d1 <sub>6g</sub>	Q	g
F17830.TM05X..01CIN	30	22	15	11	11	9	1.5	80	M5	16-20-40	14-15-17
F17830.TM06X..01CIN	30	22	15	11	11	9	1.5	80	M6	16-20-30-40	16-17-18-19
F17830.TM08X..01CIN	30	22	15	11	11	9	1.5	80	M8	20-30	21-25
F17830.TM10X2001CIN	30	22	15	11	11	9	1.5	80	M10	20	28
F17840.TM06X..01CIN	40	24.5	17	12	12.5	12	1	130	M6	20-30-40	25-27-28
F17840.TM08X..01CIN	40	24.5	17	12	12.5	12	1	130	M8	20-30-40	30-33-36
F17840.TM10X4001CIN	40	24.5	17	12	12.5	12	1	130	M10	40	45
F17850.TM08X4001CIN	50	29	20	14	15	14.5	1.5	130	M8	40	55
F17850.TM10X..01CIN	50	29	20	14	15	14.5	1.5	130	M10	20-30-40-50	55-60-65-70
F17850.TM12X..01CIN	50	29	20	14	15	14.5	1.5	130	M12	A.R.	-
F17860.TM08X4001CIN	60	34	24	16	18	18	1.5	130	M8	40	74
F17860.TM10X4001CIN	60	34	24	16	18	18	1.5	130	M10	40	74-80-85
F17860.TM12X..01CIN	60	34	24	16	18	18	1.5	130	M12	20-40	95-109
F17860.TM14X..01CIN	60	34	24	16	18	18	1.5	130	M14	A.R.	-

Enter the selected stud length in place of the two dots . . in the item code. Customised stud length available for a minimum of 150 pieces.

A.R. = Upon request, for a minimum of 150 pieces.

LM = Maximum mouldable length.



Stock availability as % (🛒)  
90% (●) - 40% (●) - 5% (●)

# F175CAT

+135°  
-30°

PA6  
+G.F.

UL94  
HB

RoHS  
COMPLIANT

## 6-LOBE SOLID HANDWHEEL WITH RETAINING CHAIN AND FEMALE THREADED INSERT

### Materials:

Reinforced polyamide.  
Resistant to oils and greases.

### Surface finish:

Satin.

### Colour:

Black (RAL 9011).

### Inserts:

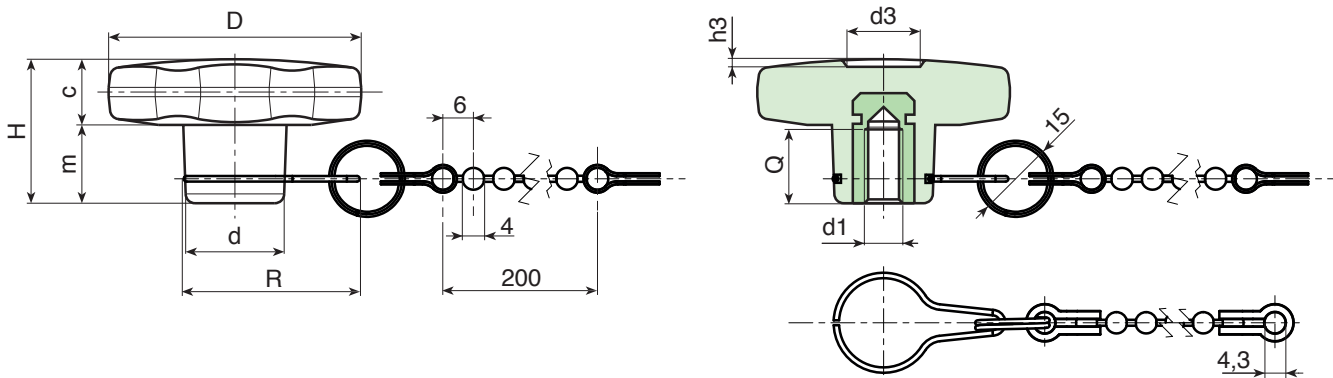
Brass insert with female threaded hole (thread tolerance 6H).

### Chain:

Black acetal (POM) chain. Harmonic stainless steel (Aisi 302) joints, retaining ring and hub hook.

### Special Requests:

- Upon request and for special quantities inserts can be supplied in different materials.
- Upon request the chain can be supplied with customised lengths.
- Upon request and for special quantities available in the colours indicated in the chart (attention: reduced range) [page 807].



Art.	D	H	d	R	c	m	d3	h3	d1 <sub>6H</sub>	Q	g
F17530.TM0401CAT	30	22	15	32	11	11	9	1.5	M4	15	14.5
F17530.TM0501CAT	30	22	15	32	11	11	9	1.5	M5	14	14.5
F17530.TM0601CAT	30	22	15	32	11	11	9	1.5	M6	10	15
F17540.TM0501CAT	40	24.5	17	33	12	12.5	12	1	M5	14	25
F17540.TM0601CAT	40	24.5	17	33	12	12.5	12	1	M6	18	25
F17540.TM0801CAT	40	24.5	17	33	12	12.5	12	1	M8	14	24.5
F17550.TM0601CAT	50	29	20	35	15.5	13.5	14.5	1.5	M6	16	39
F17550.TM0801CAT	50	29	20	35	15.5	14	14.5	1.5	M8	14	39
F17550.TM1001CAT	50	29	20	35	15.5	13.5	14.5	1.5	M10	20	40
F17560.TM0801CAT	60	34	24	38	16	18	18	1.5	M8	19	62
F17560.TM1001CAT	60	34	24	38	16	18	18	1.5	M10	21	62
F17560.TM1201CAT	60	34	24	38	16	18	18	1.5	M12	18	65

# F177CAT



PA6  
+G.F.

UL94  
HB



## 6-LOBE SOLID HANDWHEEL WITH RETAINING CHAIN AND THREADED THROUGH-HOLE INSERT

### Materials:

Reinforced polyamide.  
Resistant to oils and greases.

### Surface finish:

Satin.

### Colour:

Black (RAL 9011).

### Inserts:

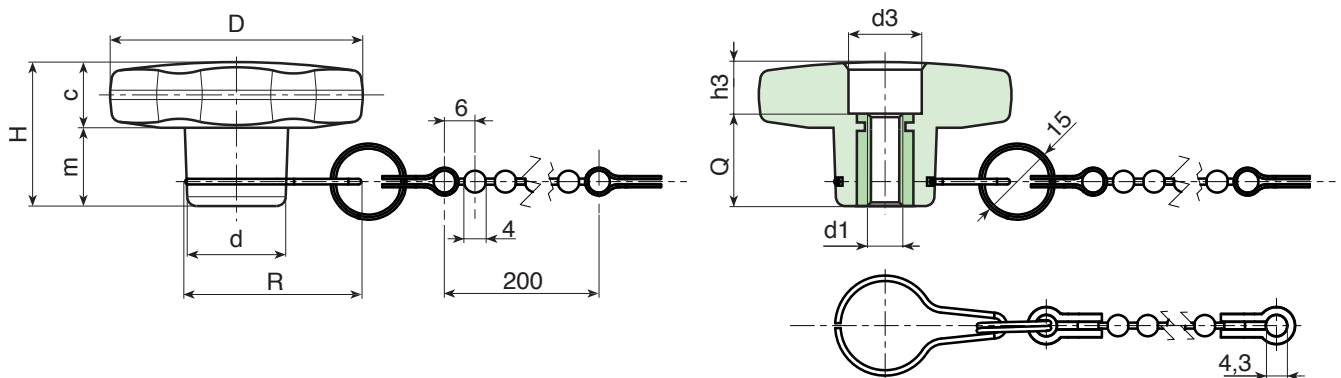
Brass insert with threaded through hole (thread tolerance 6H).

### Chain:

Black acetal (POM) chain. Harmonic stainless steel (Aisi 302) joints, retaining ring and hub hook.

### Special Requests:

- Upon request and for special quantities inserts can be supplied in different materials.
- Upon request the chain can be supplied with customised lengths.
- Upon request and for special quantities available in the colours indicated in the chart (attention: reduced range) [page 807].



🛒	Art.	D	H	d	R	c	m	d3	h3	d1 <sub>6H</sub>	Q	📏
●	F17730.TM0501CAT	30	22	15	32	11	11	11	4	M5	18	15
●	F17730.TM0601CAT	30	22	15	32	11	11	11	4	M6	18	15
●	F17740.TM0601CAT	40	24.5	17	33	12	12.5	12	6	M6	18	23
●	F17740.TM0801CAT	40	24.5	17	33	12	12.5	12	6	M8	18	24
●	F17750.TM0601CAT	50	29	20	35	14	15	14	11	M6	18	36
●	F17750.TM0801CAT	50	29	20	35	14	15	14	11	M8	18	37
●	F17760.TM0801CAT	60	34	24	38	16	18	15	16	M8	18	57
●	F17760.TM1001CAT	60	34	24	38	16	18	15	16	M10	18	58
●	F17760.TM1201CAT	60	34	24	38	16	18	15	16	M12	18	58

# F178CAT

+135°  
-30°

PA6  
+G.F.

UL94  
HB

RoHS  
COMPLIANT

## 6-LOBE SOLID HANDWHEEL WITH RETAINING CHAIN AND THREADED STUD

### Materials:

Reinforced polyamide.  
Resistant to oils and greases.

### Surface finish:

Satin.

### Colour:

Black (RAL 9011).

### Inserts:

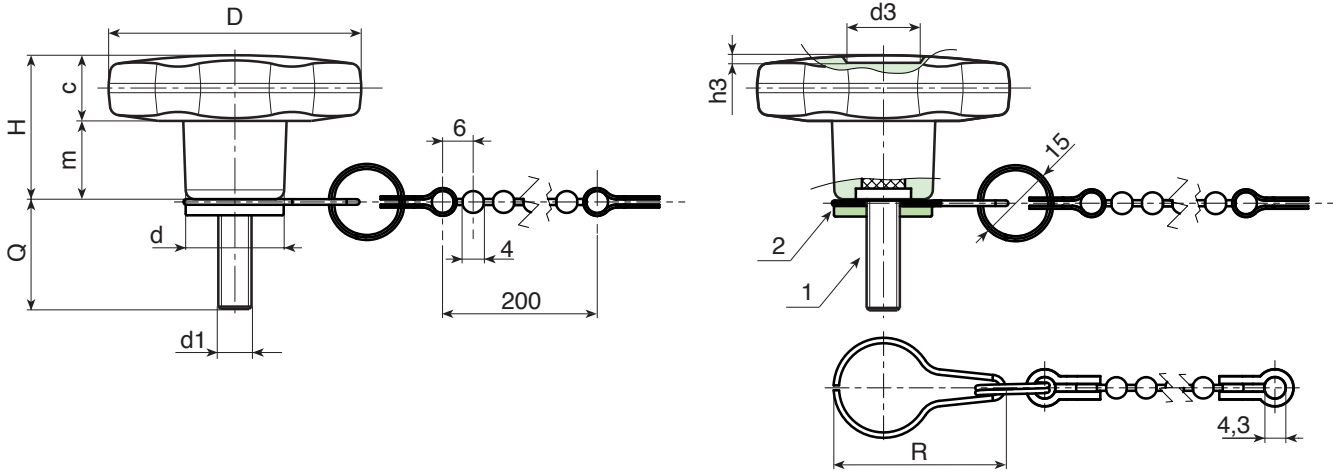
- (1) Galvanised steel threaded stud (thread tolerance 6g).
- (2) Galvanised steel turned ring nut, secured with threadlocker and with groove for retaining hook.

### Chain:

Black acetal (POM) chain. Harmonic stainless steel (Aisi 302) joints, retaining ring and hub hook.

### Special Requests:

- Upon request and for special quantities inserts can be supplied with customised lengths.
- Upon request the chain can be supplied with customised lengths.
- Upon request and for special quantities inserts can be supplied in different materials.
- Upon request and for special quantities available in the colours indicated in the chart (attention: reduced range) [page 807].



Art.	D	H	d	R	c	m	d3	h3	LM	d1 <sub>6g</sub>	Q	g
F17830.TM05X..01CAT	30	22	15	32	11	11	9	1.5	80	M5	10-16-20-30-40	13-14-15-16-17
F17830.TM06X..01CAT	30	22	15	32	11	11	9	1.5	80	M6	10-16-20-25-30-40	18-19-20-20,5-21-22
F17830.TM08X..01CAT	30	22	15	32	11	11	9	1.5	80	M8	16-20-30-40	22-24-28-31
F17830.TM10X..01CAT	30	22	15	32	11	11	9	1.5	80	M10	20-30-40	31-36-42
F17840.TM06X..01CAT	40	24.5	17	33	12	12.5	12	1	130	M6	16-20-30-40	28-28-30-31
F17840.TM08X..01CAT	40	24.5	17	33	12	12.5	12	1	130	M8	16-20-25-30-35-40-45-50	31-33-34-36-37-39-41-42
F17840.TM10X..01CAT	40	24.5	17	33	12	12.5	12	1	130	M10	20-30-40-50	40-44-48-52
F17850.TM08X..01CAT	50	29	20	35	14	15	14.5	1.5	130	M8	15-20-30-40	51-52-55-58
F17850.TM10X..01CAT	50	29	20	35	14	15	14.5	1.5	130	M10	20-25-30-40-50	58-60-63-64-67
F17850.TM12X..01CAT	50	29	20	35	14	15	14.5	1.5	130	M12	20-30-40-50	66-70-75-80
F17860.TM08X..01CAT	60	34	24	38	16	18	18	1.5	130	M8	30-40	74-77
F17860.TM10X..01CAT	60	34	24	38	16	18	18	1.5	130	M10	20-30-40-50	77-83-88-91
F17860.TM12X..01CAT	60	34	24	38	16	18	18	1.5	130	M12	20-30-40-50	98-105-112-119

Enter the selected stud length in place of the two dots . . in the item code. Customised stud length available for a minimum of 150 pieces.

LM = Maximum mouldable length.





# F275



## 6-LOBE HANDWHEEL WITH STEEL HUB AND THREADED HOLE

### Materials:

Reinforced polyamide.  
Resistant to oils and greases.

### Surface finish:

Satin.

### Colour:

Black (RAL 9011).

### Inserts:

#### F275:

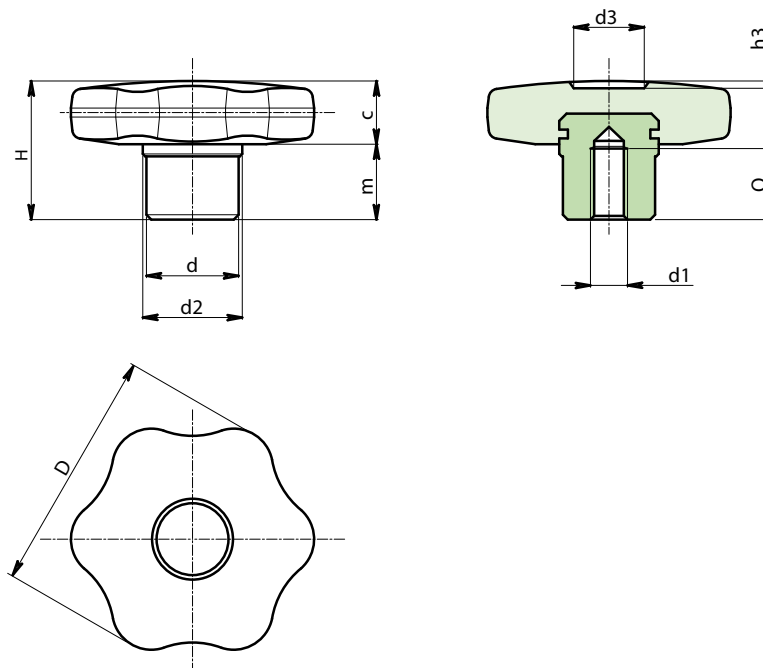
Galvanised steel insert with female threaded hole (thread tolerance 6H).

#### F275CIN:

Stainless steel insert with female threaded hole (Aisi 303) (thread tolerance 6H).

### Special Requests:

- Upon request and for special quantities inserts can be supplied with custom hole diameter d1.
- Upon request and for special quantities available in the colours indicated in the chart (attention: reduced range) [page 807].



### Version F275: Galvanised steel hub.

Art.	D	d	d2	H	m	c	d1 <sub>6H</sub>	Q	g
F27530.TM0601	30	13	15	22	11	11	M6	12	25
F27540.TM0801	40	15	17	24	12	12	M8	14	39
F27550.TM1001	50	18	20	29	15	14	M10	16	66
F27560.TM1201	60	20	24	34	18	16	M12	20	105

### Version F275 CIN: Stainless steel hub (Aisi 303).

Art.	D	d	d2	H	m	c	d1 <sub>6H</sub>	Q	g
F27530.TM0601CIN	30	13	15	22	11	11	M6	12	25
F27540.TM0801CIN	40	15	17	24	12	12	M8	14	39
F27550.TM1001CIN	50	18	20	29	15	14	M10	16	66
F27560.TM1201CIN	60	20	24	34	18	16	M12	20	105

INOX



Stock availability as % (🛒)  
90% (●) - 40% (●) - 5% (●)

# F276



## 6-LOBE HANDWHEEL WITH STEEL HUB AND SMOOTH BORE

### Materials:

Reinforced polyamide.  
Resistant to oils and greases.

### Surface finish:

Satin.

### Colour:

Black (RAL 9011).

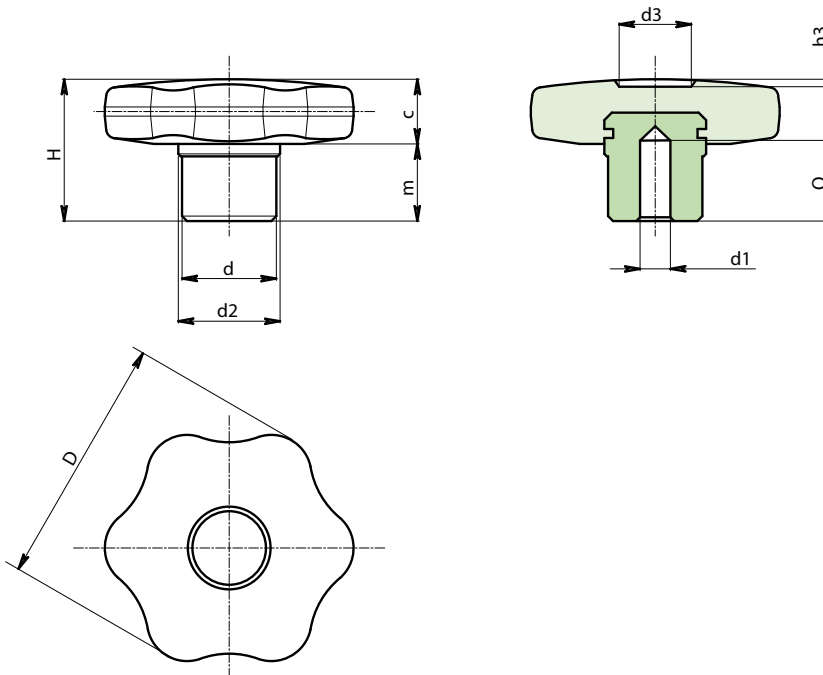
### Inserts:

**F276:**  
Galvanised steel insert with blind smooth bore (bore tolerance H9).

**F276CIN:**  
Galvanised steel insert with blind smooth bore (Aisi 303) (bore tolerance H7).

### Special requests:

- Upon request and for special quantities inserts can be supplied with custom hole diameter d1.
- Upon request and for special quantities available in the colours indicated in the chart (attention: reduced range) [page 807].



### Version F276: Galvanised steel hub.

🛒	Art.	D	d	d2	H	m	c	d1 <sub>H9</sub>	Q	g
●	F27630.TD0601	30	13	15	22	11	11	6	12	26
●	F27640.TD0801	40	15	17	24	12	12	8	14	40
●	F27650.TD1001	50	18	20	29	15	14	10	16	67
●	F27660.TD1201	60	20	24	34	18	16	12	20	102

### Version F276 CIN: Stainless steel hub (Aisi 303).



🛒	Art.	D	d	d2	H	m	c	d1 <sub>H9</sub>	Q	g
●	F27630.TD0601CIN	30	13	15	22	11	11	6	12	26
●	F27640.TD0801CIN	40	15	17	24	12	12	8	14	40
●	F27650.TD1001CIN	50	18	20	29	15	14	10	16	67
●	F27660.TD1201CIN	60	20	24	34	18	16	12	20	102



Stock availability as % (🛒)  
90% (●) - 40% (●) - 5% (●)

# F277



PA6  
+G.F.

UL94  
HB

RoHS  
COMPLIANT

## 6-LOBE HANDWHEEL WITH STEEL HUB AND THREADED THROUGH HOLE

### Materials:

Reinforced polyamide.  
Resistant to oils and greases.

### Surface finish:

Satin.

### Colour:

Black (RAL 9011).

### Inserts:

#### F277:

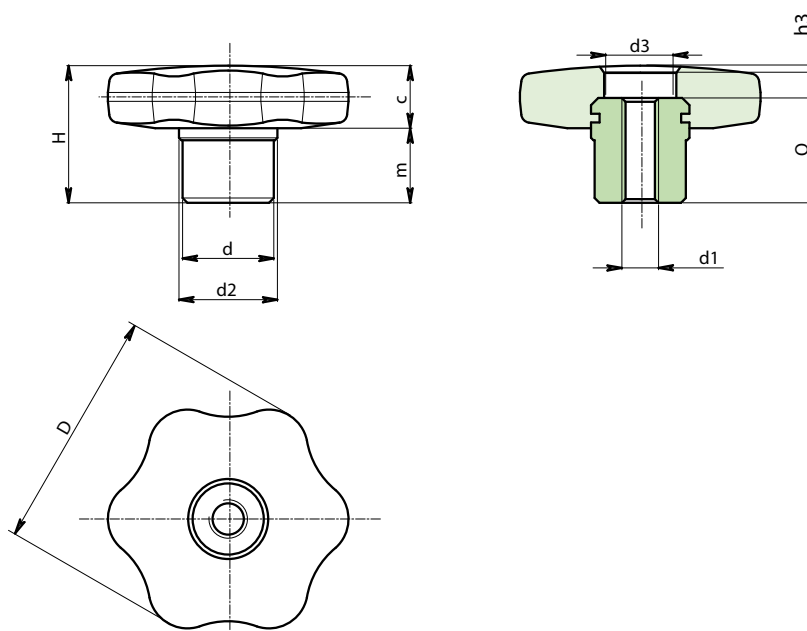
Galvanised steel insert with threaded through hole (thread tolerance 6H).

#### F277CIN:

Stainless steel insert with threaded through hole (Aisi 303) (thread tolerance 6H).

### Special requests:

- Upon request and for special quantities inserts can be supplied with custom hole diameter d1.
- Upon request and for special quantities available in the colours indicated in the chart (attention: reduced range) [page 807].



### Version F277: Galvanised steel hub.

Art.	D	d	d2	d3	H	h3	m	c	d1 <sup>6H</sup>	Q	g
F27730.TM0601	30	13	15	8	22	4	11	11	M6	18	24
F27740.TM0801	40	15	17	11	24	6	12	12	M8	18	34
F27750.TM1001	50	18	20	13	29	7	15	14	M10	22	59
F27760.TM1201	60	20	24	16	34	6	18	16	M12	28	98

### Version F276 CIN: Stainless steel hub (Aisi 303).

INOX

Art.	D	d	d2	d3	H	h3	m	c	d1 <sup>6H</sup>	Q	g
F27730.TM0601PIN	30	13	15	8	22	4	11	11	M6	18	24
F27740.TM0801PIN	40	15	17	11	24	6	12	12	M8	18	34
F27750.TM1001PIN	50	18	20	13	29	7	15	14	M10	22	59
F27760.TM1201PIN	60	20	24	16	34	6	18	16	M12	28	98

# F278

## 6-LOBE HANDWHEEL WITH STEEL HUB AND THREADED STUD



### Materials:

Reinforced polyamide.  
Resistant to oils and greases.

### Surface finish:

Satin.

### Colour:

Black (RAL 9011).

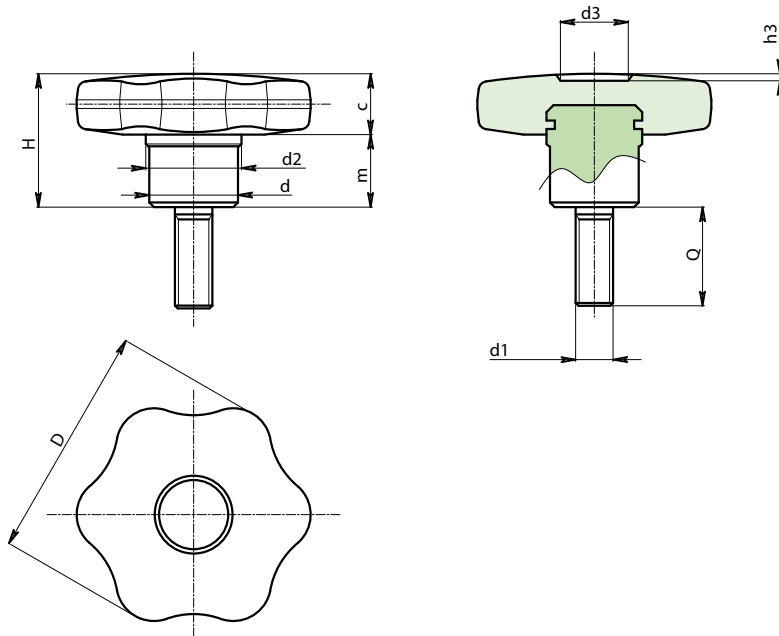
### Inserts:

**F278:**  
Galvanised steel insert with threaded stud (thread tolerance 6g).

**F278CIN:**  
Stainless steel insert with threaded stud (Aisi 303) (thread tolerance 6g).

### Special requests:

- Upon request and for special quantities inserts can be supplied with customised lengths.
- Upon request and for special quantities available in the colours indicated in the chart (attention: reduced range) [page 807].



### Version F278: Galvanised steel hub.

Art.	D	H	d	c	m	d3	h3	LM	d1 <sub>6g</sub>	Q	
F27830.TM06X..01	30	22	13	11	11	8	4	45	M6	A.R.	-
F27840.TM08X3001	40	24	15	12	12	11	6	55	M8	30	54
F27850.TM10X4001	50	29	18	14	15	13	7	60	M10	40	96
F27860.TM12X..01	60	34	20	16	18	16	6	60	M12	A.R.	-

Enter the selected stud length in place of the two dots .. in the item code.

A.R. = Upon request, for a minimum of 150 pieces.

LM = Maximum mouldable length.

### Version F278 CIN: Stainless steel hub (Aisi 303).



Art.	D	H	d	c	m	d3	h3	LM	d1 <sub>6g</sub>	Q	
F27830.TM06X..01CIN	30	22	13	11	11	8	4	35	M6	A.R.	-
F27840.TM08X3001CIN	40	24	15	12	12	11	6	45	M8	30	54
F27850.TM10X..01CIN	50	29	18	14	15	13	7	50	M10	A.R.	-
F27860.TM12X..01CIN	60	34	20	16	18	16	6	50	M12	A.R.	-

Enter the selected stud length in place of the two dots .. in the item code.

A.R. = Upon request, for a minimum of 150 pieces.

LM = Maximum mouldable length.



Stock availability as % ()  
90% (●) - 40% (●) - 5% (●)

# F186



## SOLID STAR HANDWHEEL WITH FEMALE THREADED INSERT

### Materials:

Reinforced polyamide.  
Resistant to oils and greases.

### Surface finish:

Satin.

### Colour:

Black (RAL 9011).

### Inserts:

#### Version F186:

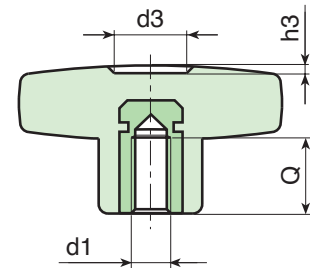
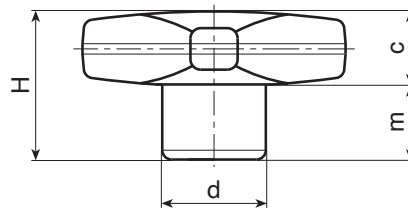
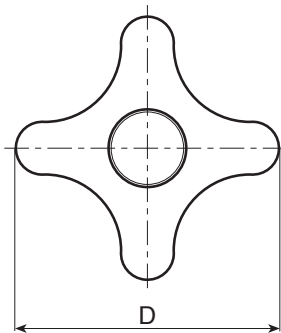
Brass insert with female threaded hole (thread tolerance 6H).

#### Version F186CIN:

Stainless steel insert with female threaded hole (Aisi 303) (thread tolerance 6H).

### Special Requests:

- Upon request and for special quantities inserts can be supplied in different materials.
- Upon request and for special quantities available in the colours indicated in the chart (attention: reduced range) [page 807].



### Version F186: with brass insert.

Art.	D	H	d	c	m	d3	h3	d1 <sub>6H</sub>	Q	g
F18632.TM0401	32	23	15	11	12	11	1.5	M4	7	11
F18632.TM0501	32	23	15	11	12	11	1.5	M5	14	11.5
F18632.TM0601	32	23	15	11	12	11	1.5	M6	10	12
F18632.TM0801	32	23	15	11	12	11	1.5	M8	14	12.5
F18632.TM1001	32	23	15	11	12	11	1.5	M10	14	13
F18640.TM0501	40	24.5	16	12	12.5	13	1.5	M5	14	14
F18640.TM0601	40	24.5	16	12	12.5	13	1.5	M6	16	15
F18640.TM0801	40	24.5	16	12	12.5	13	1.5	M8	14	16
F18640.TM1001	40	24.5	16	12	12.5	13	1.5	M10	14	17
F18650.TM0601	50	29	20	14	15	14	2	M6	16	25
F18650.TM0801	50	29	20	14	15	14	2	M8	14	26
F18650.TM1001	50	29	20	14	15	14	2	M10	14	27
F18650.TM1201	50	29	20	14	15	14	2	M12	18	29
F18660.TM0801	60	34	24	15.5	18.5	18	2	M8	19	40
F18660.TM1001	60	34	24	15.5	18.5	18	2	M10	21	43
F18660.TM1201	60	34	24	15.5	18.5	18	2	M12	18	44
F18660.TM1401	60	34	24	15.5	18.5	18	2	M14	19	47

### Version F186CIN: with stainless steel insert (Aisi 303).

Art.	D	H	d	c	m	d3	h3	d1 <sub>6H</sub>	Q	g
F18632.TM0501CIN	32	23	15	11	12	11	1.5	M5	14	11.5
F18632.TM0601CIN	32	23	15	11	12	11	1.5	M6	10	12
F18632.TM0801CIN	32	23	15	11	12	11	1.5	M8	14	12.5
F18640.TM0601CIN	40	24.5	16	12	12.5	13	1.5	M6	16	15
F18640.TM0801CIN	40	24.5	16	12	12.5	13	1.5	M8	14	16
F18640.TM1001CIN	40	24.5	16	12	12.5	13	1.5	M10	14	17
F18650.TM0801CIN	50	29	20	14	15	14	2	M8	14	26
F18650.TM1001CIN	50	29	20	14	15	14	2	M10	14	27
F18650.TM1201CIN	50	29	20	14	15	14	2	M12	18	29
F18660.TM0801CIN	60	34	24	15.5	18.5	18	2	M8	19	40
F18660.TM1001CIN	60	34	24	15.5	18.5	18	2	M10	21	43
F18660.TM1201CIN	60	34	24	15.5	18.5	18	2	M12	18	44

INOX



# F187

## SOLID STAR HANDWHEEL WITH INSERT AND SMOOTH BORE

+135°  
-30°

PA6  
+G.F.

UL94  
HB

RoHS  
COMPLIANT

### Materials:

Reinforced polyamide.  
Resistant to oils and greases.

### Surface finish:

Satin.

### Colour:

Black (RAL 9011).

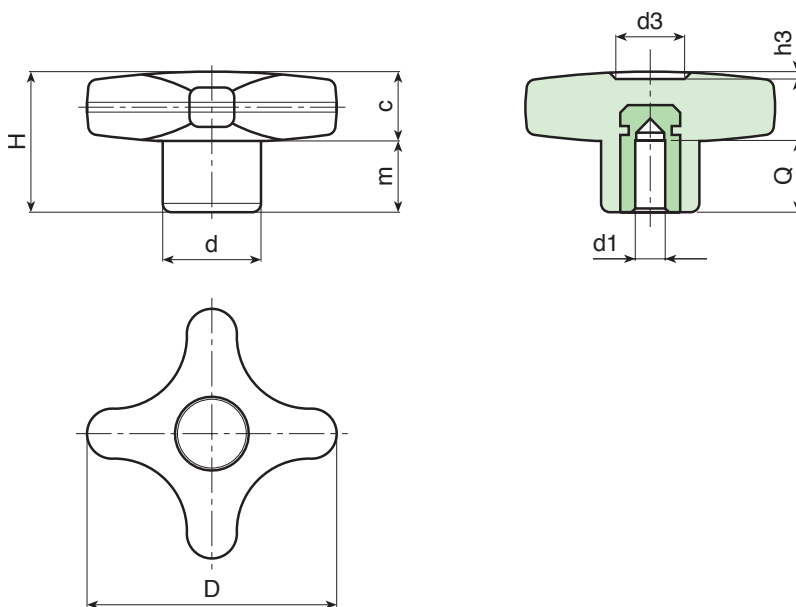
### Inserts:

Brass insert with blind smooth bore (bore tolerance H7)

**ATTENTION: bore cannot be widened.**

### Special Requests:

- Upon request and for special quantities inserts can be supplied in different materials.
- Upon request and for special quantities available in the colours indicated in the chart (attention: reduced range) [page 807].



Art.	D	H	d	c	m	d3	h3	d1 <sub>H7</sub>	Q	g
F18732.TD0601	32	23	15	11	12	11	1.5	6	15	13
F18732.TD0801	32	23	15	11	12	11	1.5	8	15	14
F18740.TD0601	40	24.5	16	12	12.5	13	1.5	6	15	18
F18740.TD0801	40	24.5	16	12	12.5	13	1.5	8	15	21
F18740.TD1001	40	24.5	16	12	12.5	13	1.5	10	17	20
F18750.TD0601	50	29	20	14	15	14	2	6	15	29
F18750.TD0801	50	29	20	14	15	14	2	8	15	31
F18750.TD1001	50	29	20	14	15	14	2	10	17	32
F18760.TD0801	60	34	24	15.5	18.5	18	2	8	18	70
F18760.TD1001	60	34	24	15.5	18.5	18	2	10	25	65
F18760.TD1201	60	34	24	15.5	18.5	18	2	12	22	60

# F188



PA6  
+G.F.

UL94  
HB

RoHS  
COMPLIANT

## SOLID STAR HANDWHEEL WITH THREADED THROUGH-HOLE INSERT

### Materials:

Reinforced polyamide.  
Resistant to oils and greases.

### Surface finish:

Satin.

### Colour:

Black (RAL 9011).

### Inserts:

#### Version F188:

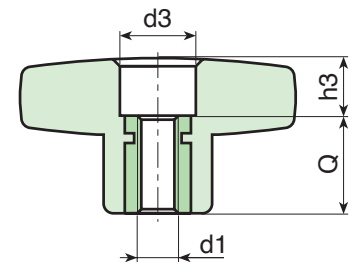
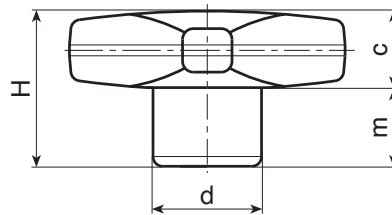
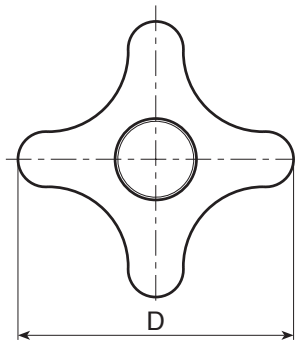
Brass insert with threaded through hole (thread tolerance 6H).

#### Version F188PIN:

Stainless steel insert with threaded through hole (Aisi 303) (thread tolerance 6H).

### Special Requests:

- Upon request and for special quantities inserts can be supplied in different materials.
- Upon request and for special quantities available in the colours indicated in the chart (attention: reduced range) [page 807].



### Version F188: with brass insert.

Art.	D	H	d	c	m	d3	h3	d1 <sub>6H</sub>	Q	g
F18832.TM0401	32	23	15	11	11	10	5	M4	18	9
F18832.TM0501	32	23	15	11	11	10	5	M5	18	10
F18832.TM0601	32	23	15	11	11	10	5	M6	18	10.5
F18832.TM0801	32	23	15	11	11	10	5	M8	18	11
F18840.TM0601	40	24.5	16	12	12.5	12	6.5	M6	18	13
F18840.TM0801	40	24.5	16	12	12.5	12	6.5	M8	18	15
F18840.TM1001	40	24.5	16	12	12.5	12	6.5	M10	18	16
F18850.TM0601	50	29	20	14	15	14	11	M6	18	23
F18850.TM0801	50	29	20	14	15	14	11	M8	18	24
F18850.TM1001	50	29	20	14	15	14	11	M10	18	25
F18850.TM1201	50	29	20	14	15	14	11	M12	18	26
F18860.TM0801	60	34	24	15.5	18.5	16	16	M8	18	34
F18860.TM1001	60	34	24	15.5	18.5	16	16	M10	18	38
F18860.TM1201	60	34	24	15.5	18.5	16	16	M12	18	40
F18860.TM1401	60	34	24	15.5	18.5	16	16	M14	18	45

### Version F188PIN: with stainless steel insert (Aisi 303).

Art.	D	H	d	c	m	d3	h3	d1 <sub>6H</sub>	Q	g
F18832.TM0501PIN	32	23	15	11	11	10	5	M5	18	10
F18832.TM0601PIN	32	23	15	11	11	10	5	M6	18	10.5
F18832.TM0801PIN	32	23	15	11	11	10	5	M8	18	11
F18840.TM0601PIN	40	24.5	16	12	12.5	12	6.5	M6	18	13
F18840.TM0801PIN	40	24.5	16	12	12.5	12	6.5	M8	18	15
F18840.TM1001PIN	40	24.5	16	12	12.5	12	6.5	M10	18	16
F18850.TM0801PIN	50	29	20	14	15	14	11	M8	18	24
F18850.TM1001PIN	50	29	20	14	15	14	11	M10	18	25
F18850.TM1201PIN	50	29	20	14	15	14	11	M12	18	26
F18860.TM0801PIN	60	34	24	15.5	18.5	16	16	M8	18	34
F18860.TM1001PIN	60	34	24	15.5	18.5	16	16	M10	18	38
F18860.TM1201PIN	60	34	24	15.5	18.5	16	16	M12	18	40

INOX



Stock availability as % (🛒)  
90% (●) - 40% (●) - 5% (●)

# F189

## SOLID STAR HANDWHEEL WITH THREADED STUD



### Materials:

Reinforced polyamide.  
Resistant to oils and greases.

### Surface finish:

Satin.

### Colour:

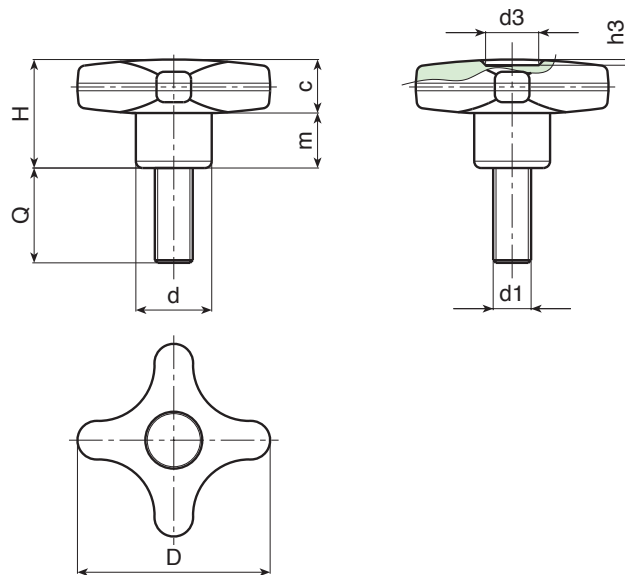
Black (RAL 9011).

### Inserts:

Galvanised steel threaded stud (thread tolerance 6g).

### Special Requests:

- Upon request and for special quantities inserts can be supplied with customised lengths.
- Upon request and for special quantities inserts can be supplied in different materials.
- Upon request and for special quantities available in the colours indicated in the chart (attention: reduced range) [page 807].



Art.	D	H	d	c	m	d3	h3	LM	d1 <sub>6g</sub>	Q	g
F18932.TM05X..01	32	23	15	11	11	9	1.5	80	M5	16-20-30	14-15-16
F18932.TM06X..01	32	23	15	11	11	9	1.5	80	M6	16-20-30	15-16-17
F18932.TM08X..01	32	23	15	11	11	9	1.5	80	M8	16-20-30-40	19-21-23-25
F18932.TM10X..01	32	23	15	11	11	9	1.5	80	M10	20-30-40	24-27-30
F18940.TM06X..01	40	24.5	17	12	12.5	12	1	80	M6	15-20-30-40-50	20-20-21-22-25
F18940.TM08X..01	40	24.5	17	12	12.5	12	1	80	M8	16-20-30-40-50	22-24-29-33-37
F18940.TM10X..01	40	24.5	17	12	12.5	12	1	80	M10	15-20-30-50	28,5-30-35-47
F18950.TM08X..01	50	29	20	14	15	14.5	1.5	80	M8	15-20-30-40	36-38-42-46
F18950.TM10X..01	50	29	20	14	15	14.5	1.5	80	M10	20-30-40-50	49-55-61-65
F18950.TM12X..01	50	29	20	14	15	14.5	1.5	80	M12	30-50	57-70
F18960.TM08X..01	60	34	24	15.5	18.5	18	1.5	80	M8	15-20-30-40	45,5-47-50-53
F18960.TM10X..01	60	34	24	15.5	18.5	18	1.5	80	M10	20-30-40-50	64-68-72
F18960.TM12X..01	60	34	24	15.5	18.5	18	1.5	80	M12	20-30-40-50	78-85-91-99

Enter the selected stud length in place of the two dots . . in the item code. Customised stud length available for a minimum of 150 pieces.

LM = Maximum mouldable length.



Stock availability as % (🛒)  
90% (●) - 40% (●) - 5% (●)



# F189CIN



PA6  
+G.F.

UL94  
HB

RoHS  
COMPLIANT

## SOLID STAR HANDWHEEL WITH STAINLESS STEEL THREADED STUD

INOX

### Materials:

Reinforced polyamide.  
Resistant to oils and greases.

### Surface finish:

Satin.

### Colour:

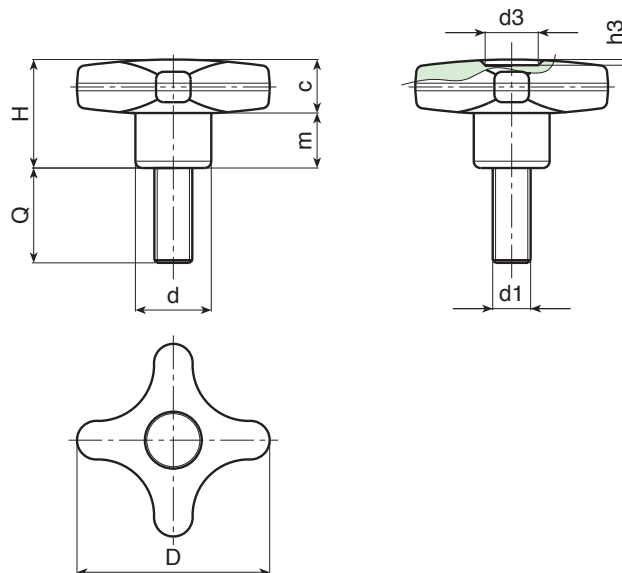
Black (RAL 9011).

### Inserts:

Threaded stainless steel stud (Aisi 304) (thread tolerance 6g).

### Special Requests:

- Upon request and for special quantities inserts can be supplied with customised lengths.
- Upon request and for special quantities available in the colours indicated in the chart (attention: reduced range) [page 807].



INOX

Art.	D	H	d	c	m	d3	h3	LM	d1 <sub>6g</sub>	Q	g
F18932.TM05X..01CIN	32	23	15	11	11	9	1.5	80	M5	20-40	15-17
F18932.TM06X..01CIN	32	23	15	11	11	9	1.5	80	M6	16-20-30	15-16-17
F18932.TM08X..01CIN	32	23	15	11	11	9	1.5	80	M8	16-20-30	19-21-23
F18932.TM10X2001CIN	32	23	15	11	11	9	1.5	80	M10	20	24
F18940.TM06X..01CIN	40	24.5	17	12	12.5	12	1	80	M6	15-20-40	19.5-20-22
F18940.TM08X..01CIN	40	24.5	17	12	12.5	12	1	80	M8	16-20-30-40	22-24-29-33
F18940.TM10X..01CIN	40	24.5	17	12	12.5	12	1	80	M10	A.R.	-
F18950.TM08X3501CIN	50	29	20	14	15	14.5	1.5	80	M8	35	44
F18950.TM10X..01CIN	50	29	20	14	15	14.5	1.5	80	M10	20-30-40	49-55-61
F18950.TM12X..01CIN	50	29	20	14	15	14.5	1.5	80	M12	A.R.	-
F18960.TM08X..01CIN	60	34	24	15.5	18.5	18	1.5	80	M8	A.R.	-
F18960.TM10X5001CIN	60	34	24	15.5	18.5	18	1.5	80	M10	50	72
F18960.TM12X..01CIN	60	34	24	15.5	18.5	18	1.5	80	M12	40-60	91-103
F18960.TM14X..01CIN	60	34	24	15.5	18.5	18	1.5	80	M14	A.R.	-

Enter the selected stud length in place of the two dots .. in the item code.

A.R. = Upon request, for a minimum of 150 pieces.

LM = Maximum mouldable length.



Stock availability as % (🛒)  
90% (●) - 40% (●) - 5% (●)

# F186CAT

+135°  
-30°

PA6  
+G.F.

UL94  
HB

RoHS  
COMPLIANT

## SOLID STAR HANDWHEEL WITH RETAINING CHAIN AND FEMALE THREADED INSERT

### Materials:

Reinforced polyamide.  
Resistant to oils and greases.

### Surface finish:

Satin.

### Colour:

Black (RAL 9011).

### Inserts:

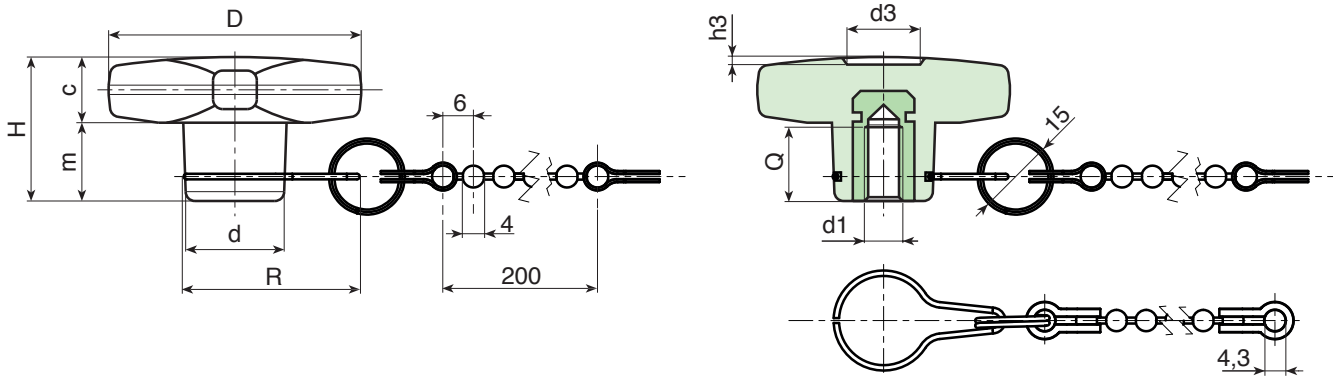
Brass insert with female threaded hole (thread tolerance 6H).

### Chain:

Black acetal (POM) chain. Harmonic stainless steel (Aisi 302) joints, retaining ring and hub hook.

### Special Requests:

- Upon request and for special quantities inserts can be supplied in different materials.
- Upon request the chain can be supplied with customised lengths.
- Upon request and for special quantities available in the colours indicated in the chart (attention: reduced range) [page 807].



Art.	D	H	d	R	c	m	d3	h3	d1 <sub>6H</sub>	Q	g
F18632.TM0401CAT	32	23	15	32	11	12	11	1.5	M4	7	14
F18632.TM0501CAT	32	23	15	32	11	12	11	1.5	M5	14	14.5
F18632.TM0601CAT	32	23	15	32	11	12	11	1.5	M6	10	15
F18640.TM0501CAT	40	24.5	16	33	12	12.5	13	1.5	M5	14	17
F18640.TM0601CAT	40	24.5	16	33	12	12.5	13	1.5	M6	16	18
F18640.TM0801CAT	40	24.5	16	33	12	12.5	13	1.5	M8	14	19
F18650.TM0601CAT	50	29	20	35	14	15	14	2	M6	16	28
F18650.TM0801CAT	50	29	20	35	14	15	14	2	M8	14	29
F18650.TM1001CAT	50	29	20	35	14	15	14	2	M10	14	30
F18660.TM0801CAT	60	34	24	38	15.5	18.5	18	2	M8	19	43
F18660.TM1001CAT	60	34	24	38	15.5	18.5	18	2	M10	21	46
F18660.TM1201CAT	60	34	24	38	15.5	18.5	18	2	M12	18	47

# F188CAT



PA6  
+G.F.

UL94  
HB

RoHS  
COMPLIANT

## SOLID STAR HANDWHEEL WITH RETAINING CHAIN AND THREADED THROUGH-HOLE INSERT

### Materials:

Reinforced polyamide.  
Resistant to oils and greases.

### Surface finish:

Satin.

### Colour:

Black (RAL 9011).

### Inserts:

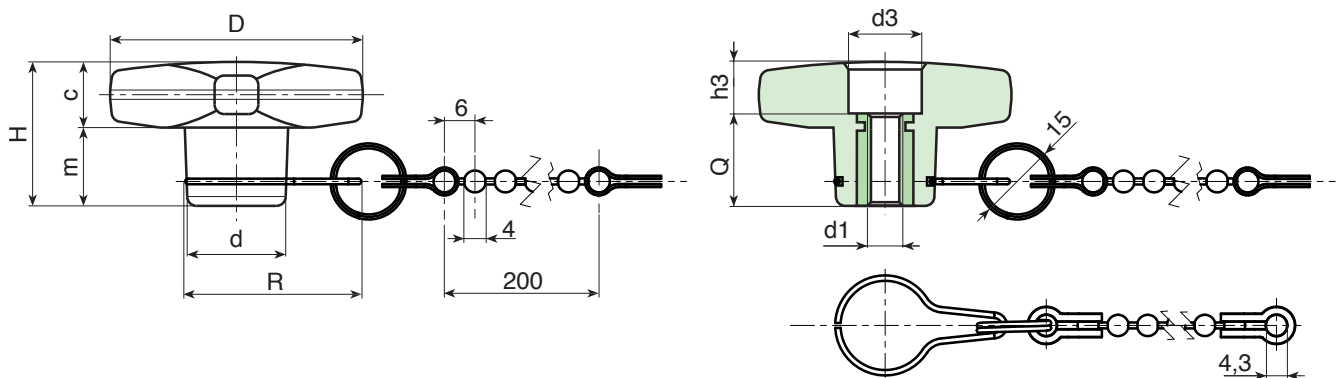
Brass insert with threaded through hole (thread tolerance 6H).

### Chain:

Black acetal (POM) chain. Harmonic stainless steel (Aisi 302) joints, retaining ring and hub hook.

### Special Requests:

- Upon request and for special quantities inserts can be supplied in different materials.
- Upon request the chain can be supplied with customised lengths.
- Upon request and for special quantities available in the colours indicated in the chart (attention: reduced range) [page 807].



🛒	Art.	D	H	d	R	c	m	d3	h3	d1 <sub>6H</sub>	Q	g
●	F18832.TM0401CAT	32	23	15	32	11	11	10	5	M4	18	12
●	F18832.TM0501CAT	32	23	15	32	11	11	10	5	M5	18	13
●	F18832.TM0601CAT	32	23	15	32	11	11	10	5	M6	18	13.5
●	F18840.TM0601CAT	40	24.5	16	33	12	12.5	12	6.5	M6	18	16
●	F18840.TM0801CAT	40	24.5	16	33	12	12.5	12	6.5	M8	18	18
●	F18850.TM0601CAT	50	29	20	35	14	15	14	11	M6	18	26
●	F18850.TM0801CAT	50	29	20	35	14	15	14	11	M8	18	27
●	F18850.TM1001CAT	50	29	20	35	14	15	14	11	M10	18	28
●	F18860.TM0801CAT	60	34	24	38	15.5	18.5	16	16	M8	18	37
●	F18860.TM1001CAT	60	34	24	38	15.5	18.5	16	16	M10	18	41
●	F18860.TM1201CAT	60	34	24	38	15.5	18.5	16	16	M12	18	43

# F189CAT



## SOLID STAR HANDWHEEL WITH RETAINING CHAIN AND THREADED STUD

### Materials:

Reinforced polyamide.  
Resistant to oils and greases.

### Surface finish:

Satin.

### Colour:

Black (RAL 9011).

### Inserts:

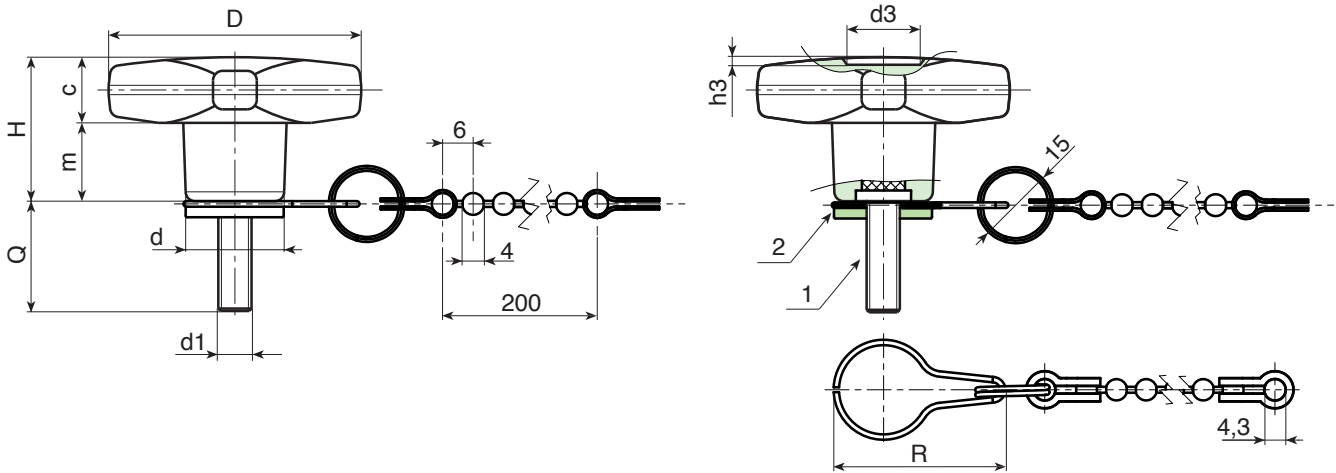
- (1) Galvanised steel threaded stud (thread tolerance 6g).
- (2) Galvanised steel turned ring nut, secured with threadlocker and with groove for retaining hook.

### Chain:

Black acetal (POM) chain. Harmonic stainless steel (Aisi 302) joints, retaining ring and hub hook.

### Special Requests:

- Upon request and for special quantities inserts can be supplied with customised lengths.
- Upon request the chain can be supplied with customised lengths.
- Upon request and for special quantities inserts can be supplied in different materials.
- Upon request and for special quantities available in the colours indicated in the chart (attention: reduced range) [page 807].



Art.	D	H	d	c	m	d3	h3	LM	d1 <sub>6g</sub>	Q	g
F18932.TM05X..01CAT	32	23	15	11	11	9	1.5	80	M5	16-20-30	17-18-19
F18932.TM06X..01CAT	32	23	15	11	11	9	1.5	80	M6	16-20-30	18-19-21
F18932.TM08X..01CAT	32	23	15	11	11	9	1.5	80	M8	16-20-30-40	22-24-26-28
F18932.TM10X..01CAT	32	23	15	11	11	9	1.5	80	M10	20-30-40	27-30-33
F18940.TM06X..01CAT	40	24.5	17	12	12.5	12	1	80	M6	15-20-30-40-50	23-23-24-25-28
F18940.TM08X..01CAT	40	24.5	17	12	12.5	12	1	80	M8	16-20-30-40-50	25-27-32-36-40
F18940.TM10X..01CAT	40	24.5	17	12	12.5	12	1	80	M10	15-20-30-50	31-33-38-50
F18950.TM08X..01CAT	50	29	20	14	15	14.5	1.5	80	M8	15-20-30-40	39-41-45-49
F18950.TM10X..01CAT	50	29	20	14	15	14.5	1.5	80	M10	20-30-40-50	52-58-64-68
F18950.TM12X..01CAT	50	29	20	14	15	14.5	1.5	80	M12	30-50	60-73
F18960.TM08X..01CAT	60	34	24	15.5	18.5	18	1.5	80	M8	15-20-30-40	49-50-54-57
F18960.TM10X..01CAT	60	34	24	15.5	18.5	18	1.5	80	M10	20-30-40-50	68-72-76
F18960.TM12X..01CAT	60	34	24	15.5	18.5	18	1.5	80	M12	20-30-40-50	53-90-96-104

Enter the selected stud length in place of the two dots . . in the item code. Customised stud length available for a minimum of 150 pieces.

LM = Maximum mouldable length.



Stock availability as % (🛒)  
90% (●) - 40% (●) - 5% (●)

# F271



PA6  
+G.F.

UL94  
HB

RoHS  
COMPLIANT

## QUICK RELEASE STAR HANDWHEEL WITH STEEL HUB AND THREADED HOLE

### Materials:

Reinforced polyamide.  
Resistant to oils and greases.

### Surface finish:

Satin.

### Colour:

Black (RAL 9011).

### Inserts:

#### F271:

Galvanised steel insert with threaded through hole, with groove for quick release.

#### F271CIN:

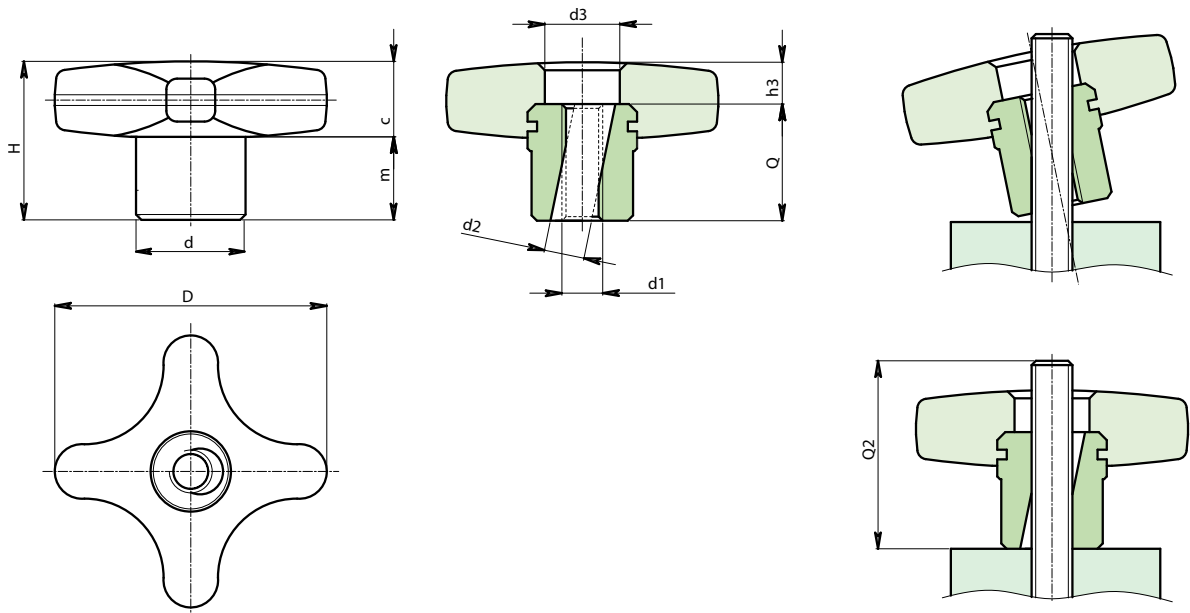
Stainless steel insert (Aisi 303) with threaded through hole, with groove for quick release.

### Special Requests:

- None.

### ATTENTION:

TO GUARANTEE CORRECT OPERATION OF THE QUICK RELEASE HANDWHEEL, THE THREADED STUD MUST HAVE A MINIMUM LENGTH EQUAL TO Q2.



### Version F271: Galvanised steel hub.

Art.	D	d	d2	d3	H	h3	m	c	d1	Q	Q2	g
F27140.TM0801P	40	16	8.5	14	26	4	14	12	M8	22	35	31
F27150.TM1001P	50	20	10.5	18	34	4	20	14	M10	30	43	63

### Version F271 PIN: Stainless steel hub (Aisi 303).

Art.	D	d	d2	d3	H	h3	m	c	d1	Q	Q2	g
F27140.TM0801PIN	40	16	8.5	14	26	4	14	12	M8	22	35	31
F27150.TM1001PIN	50	20	10.5	18	34	4	20	14	M10	30	43	63

INOX



Stock availability as % (🛒)  
90% (●) - 40% (●) - 5% (●)

# F269



## HIGH CLAMPING STAR HANDWHEEL WITH THREADED INSERT

### Materials:

Reinforced polyamide.  
Resistant to oils and greases.

### Surface finish:

Satin.

### Colour:

Black (RAL 9011).

### Inserts:

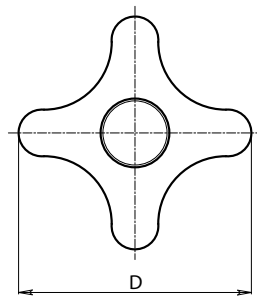
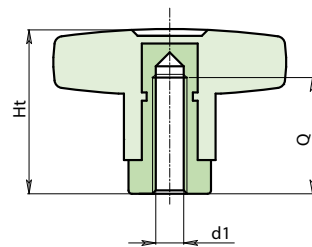
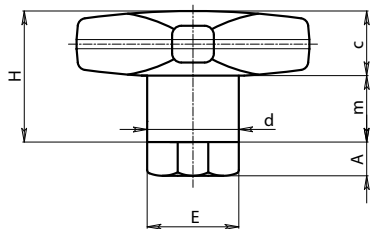
Nickel-plated brass insert with female threaded hole (thread tolerance 6H).

### Special Requests:

- Upon request and for special quantities available in the colours indicated in the chart (attention: reduced range) [page 807].

### ATTENTION:

For a standard lock turn the knob. For a tighter lock, use a hex wrench to tighten the hex nut.



Art.	D	d	H	Ht	A	E	m	c	d1 <sup>6H</sup>	Q	g
F26950.TM0601	50	18	29	39	10	17	15	14	M6	25	72
F26950.TM0801	50	18	29	39	10	17	15	14	M8	25	67
F26950.TM1001	50	18	29	39	10	17	15	14	M10	25	60

# F270

## HIGH CLAMPING STAR HANDWHEEL WITH THREADED STUD



### Materials:

Reinforced polyamide.  
Resistant to oils and greases.

### Surface finish:

Satin.

### Colour:

Black (RAL 9011).

### Inserts:

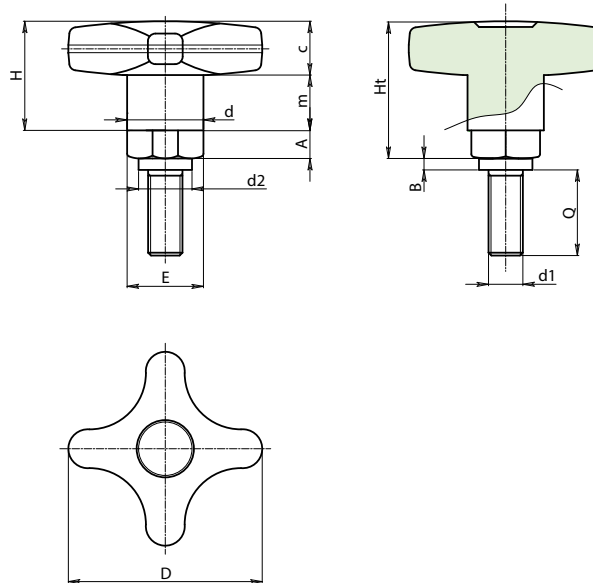
Nickel-plated brass insert with threaded stud (thread tolerance 6g).

### Special Requests:

- Upon request and for special quantities inserts can be supplied with customised lengths.
- Upon request and for special quantities available in the colours indicated in the chart (attention: reduced range) [page 807].

### ATTENTION:

For a standard lock turn the knob. For a tighter lock, use a hex wrench to tighten the hex nut.



Art.	D	d	d2	H	Ht	A	B	E	m	c	d1 <sub>6g</sub>	Q
F27050.TM10X2501	50	18	15	24	34	10	4	17	15	14	M10	25

# F286

## STAR HANDWHEEL WITH STEEL HUB AND THREADED HOLE

+135°  
-30°

PA6  
+G.F.

UL94  
HB

RoHS  
COMPLIANT

### Materials:

Reinforced polyamide.  
Resistant to oils and greases.

### Surface finish:

Satin.

### Colour:

Black (RAL 9011).

### Inserts:

#### F286:

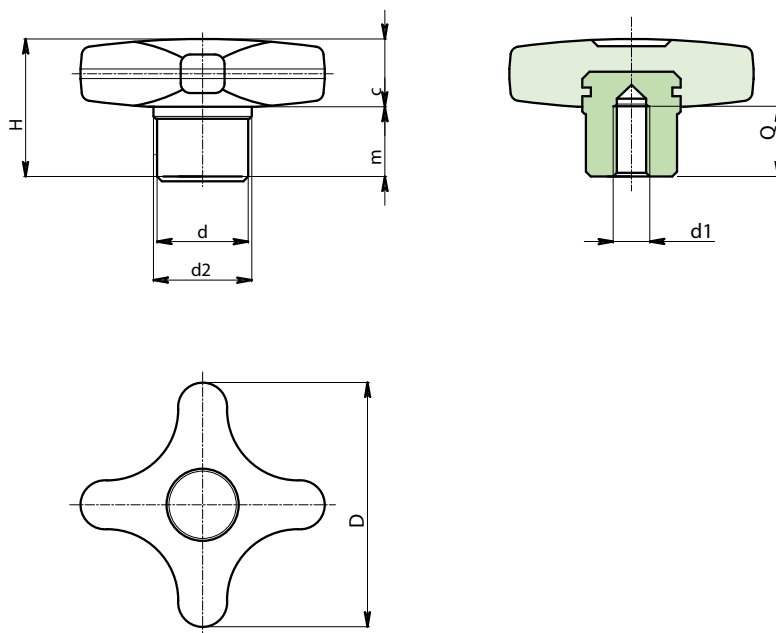
Galvanised steel insert with female threaded hole (thread tolerance 6H).

#### F286CIN:

Stainless steel insert with female threaded hole (Aisi 303) (thread tolerance 6H).

### Special requests:

- Upon request and for special quantities inserts can be supplied with custom hole diameter d1.
- Upon request and for special quantities available in the colours indicated in the chart on page 807.



### Version F286: Galvanised steel hub.

🛒	Art.	D	d	d2	H	m	c	d1 <sub>6H</sub>	Q	⚖️
●	F28632.TM0601	32	13	15	22	11	11	M6	12	23
●	F28640.TM0801	40	14	16	24	12	12	M8	14	32
●	F28650.TM1001	50	18	20	29	15	14	M10	16	54
●	F28660.TM1201	60	20	24	34	18	16	M12	20	90

### Version F286 CIN: Stainless steel hub (Aisi 303).

🛒	Art.	D	d	d2	H	m	c	d1 <sub>6H</sub>	Q	⚖️
●	F28632.TM0601CIN	32	13	15	22	11	11	M6	12	23
●	F28640.TM0801CIN	40	14	16	24	12	12	M8	14	32
●	F28650.TM1001CIN	50	18	20	29	15	14	M10	16	54
●	F28660.TM1201CIN	60	20	24	34	18	16	M12	20	90

INOX





# F287



PA6  
+G.F.

UL94  
HB

RoHS  
COMPLIANT

## STAR HANDWHEEL WITH STEEL HUB AND SMOOTH BORE

### Materials:

Reinforced polyamide.  
Resistant to oils and greases.

### Surface finish:

Satin.

### Colour:

Black (RAL 9011).

### Inserts:

#### F287:

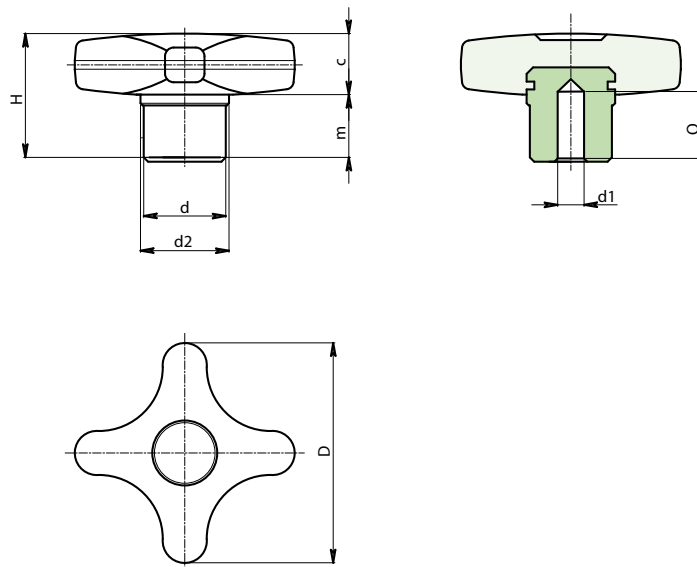
Galvanised steel insert with blind smooth bore (bore tolerance H9).

#### F287CIN:

Galvanised steel insert with blind smooth bore (Aisi 303) (bore tolerance H9).

### Special requests:

- Upon request and for special quantities inserts can be supplied with custom hole diameter d1.
- Upon request and for special quantities available in the colours indicated in the chart (attention: reduced range) [page 807].



### Version F287: Galvanised steel hub.

🛒	Art.	D	d	d2	H	m	c	d1 <sub>H9</sub>	Q	📦
●	F28732.TD0601	32	13	15	22	11	11	6	12	24
●	F28740.TD0801	40	14	16	24	12	12	8	14	35
●	F28750.TD1001	50	18	20	29	15	14	10	16	57
●	F28760.TD1201	60	20	24	34	18	16	12	20	85

### Version F287 CIN: Stainless steel hub (Aisi 303).

INOX

🛒	Art.	D	d	d2	H	m	c	d1 <sub>H9</sub>	Q	📦
●	F28732.TD0601CIN	32	13	15	22	11	11	6	12	24
●	F28740.TD0801CIN	40	14	16	24	12	12	8	14	35
●	F28750.TD1001CIN	50	18	20	29	15	14	10	16	57
●	F28760.TD1201CIN	60	20	24	34	18	16	12	20	85

# F288



## STAR HANDWHEEL WITH STEEL HUB AND THREADED THROUGH HOLE

### Materials:

Reinforced polyamide.  
Resistant to oils and greases.

### Surface finish:

Satin.

### Colour:

Black (RAL 9011).

### Inserts:

#### F288:

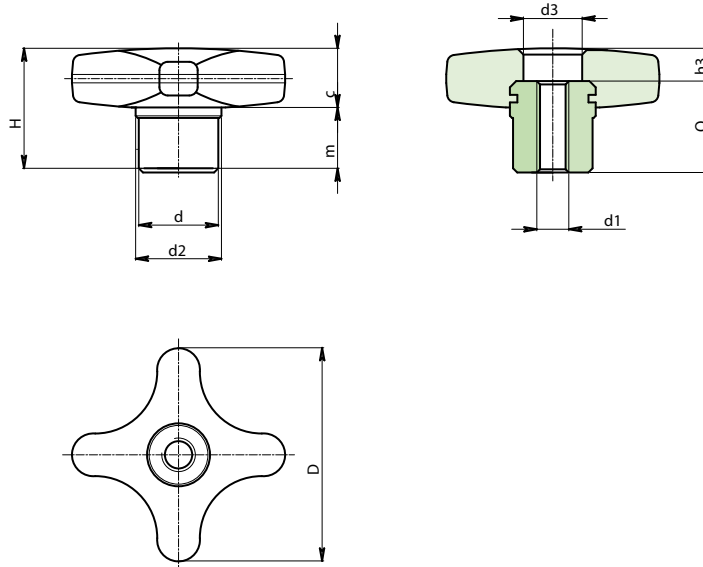
Galvanised steel insert with threaded through hole (thread tolerance 6H).

#### F288PIN:

Stainless steel insert with threaded through hole (Aisi 303) (thread tolerance 6H).

### Special requests:

- Upon request and for special quantities inserts can be supplied with custom hole diameter d1.
- Upon request and for special quantities available in the colours indicated in the chart (attention: reduced range) [page 807].



### Version F288: Galvanised steel hub.

🛒	Art.	D	d	d2	d3	H	h3	m	c	d1 <sub>6H</sub>	Q	📦
●	F28832.TM0601	32	13	15	8	22	4	11	11	M6	18	21
●	F28840.TM0801	40	14	16	11	24	6	12	12	M8	18	28
●	F28850.TM1001	50	18	20	14	29	7	15	14	M10	22	49
●	F28860.TM1201	60	20	24	16	34	6	18	16	M12	28	81

### Version F288 PIN: Stainless steel hub (Aisi 303).



🛒	Art.	D	d	d2	d3	H	h3	m	c	d1 <sub>6H</sub>	Q	📦
●	F28832.TM0601PIN	32	13	15	8	22	4	11	11	M6	18	21
●	F28840.TM0801PIN	40	14	16	11	24	6	12	12	M8	18	28
●	F28850.TM1001PIN	50	18	20	14	29	7	15	14	M10	22	49
●	F28860.TM1201PIN	60	20	24	16	34	6	18	16	M12	28	81



# F289



## STAR HANDWHEEL WITH STEEL HUB AND THREADED STUD

### Materials:

Reinforced polyamide.  
Resistant to oils and greases.

### Surface finish:

Satin.

### Colour:

Black (RAL 9011).

### Inserts:

#### F289:

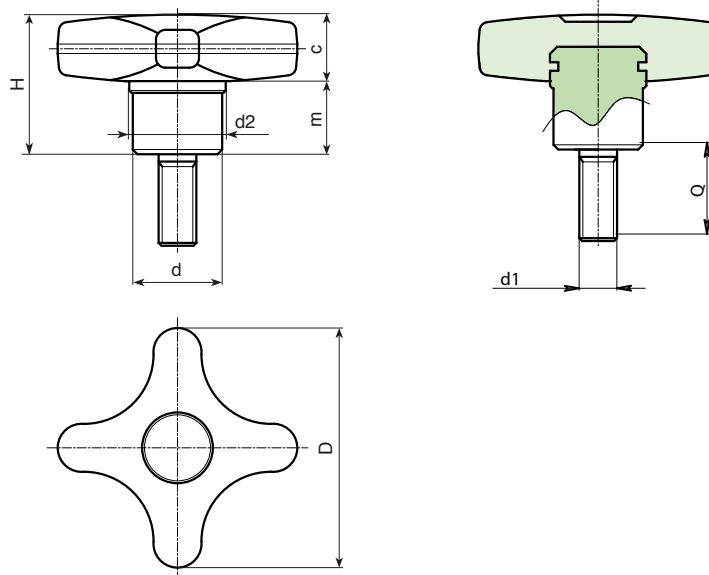
Galvanised steel insert with threaded stud (thread tolerance 6g).

#### F289CIN:

Stainless steel insert with threaded stud (Aisi 303) (thread tolerance 6g).

### Special requests:

- Upon request and for special quantities inserts can be supplied with customised lengths.
- Upon request and for special quantities available in the colours indicated in the chart (attention: reduced range) [page 807].



### Version F289: Galvanised steel hub.

Art.	D	H	d	c	m	LM	d1 <sub>6g</sub>	Q	g
F28932.TM06X..01	32	22	13	11	11	45	M6	A.R.	-
F28940.TM08X..01	40	24	14	12	12	55	M8	A.R.	-
F28950.TM10X..01	50	29	18	14	15	60	M10	A.R.	-
F28960.TM12X..01	60	34	20	16	18	60	M12	A.R.	-

Enter the selected stud length in place of the two dots . . in the item code.

A.R. = Upon request, for a minimum of 150 pieces.

LM = Maximum mouldable length.

### Version F289 CIN: Stainless steel hub (Aisi 303).

Art.	D	H	d	c	m	LM	d1 <sub>6g</sub>	Q	g
F28932.TM06X..01CIN	32	22	13	11	11	35	M6	A.R.	-
F28940.TM08X..01CIN	40	24	14	12	12	45	M8	A.R.	-
F28950.TM10X..01CIN	50	29	18	14	15	50	M10	A.R.	-
F28960.TM12X..01CIN	60	34	20	16	18	50	M12	A.R.	-

Enter the selected stud length in place of the two dots . . in the item code.

A.R. = Upon request, for a minimum of 150 pieces.

LM = Maximum mouldable length.

INOX



Stock availability as % (🛒)  
90% (●) - 40% (●) - 5% (●)

# F661-F761



## 3-LOBE SOLID HANDWHEEL WITH FEMALE THREADED INSERT

### Materials:

Reinforced polyamide. Resistant to oils and greases.

### Surface finish:

Satin.

### Colour:

Black (RAL 9011).

### Inserts:

Brass insert with female threaded hole (thread tolerance 6H).

(\*) Galvanised steel insert with female threaded hole (thread tolerance 6H).

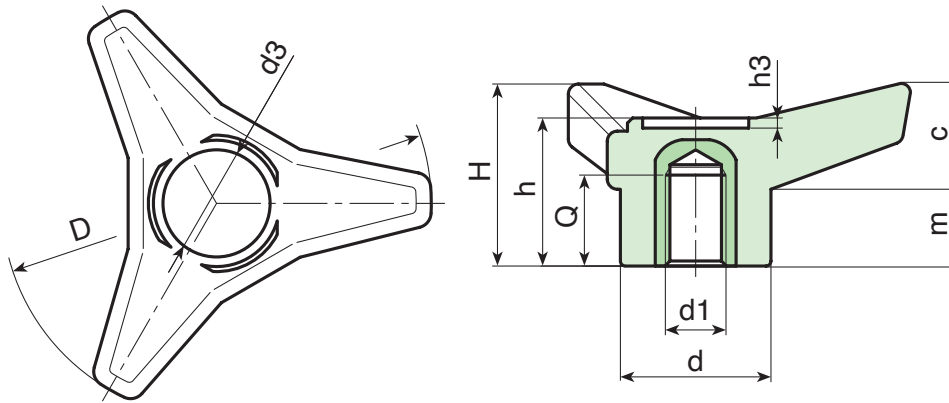
### Hub:

F661= Solid Hub

F761= Lightweight Hub

### Special requests:

- Upon request and for special quantities inserts can be supplied in different materials.
- Upon request and for special quantities available in the colours indicated in the chart on page 807.



### Version F761: with lightweight hub

art.	D	H	h	d	c	m	d2	d3	h3	d1 <sub>6H</sub>	Q	g
F761085.TM0801	85	37	30.5	30	21	16	18	21	2	M8	15	53
F761085.TM1001	85	37	30.5	30	21	16	18	21	2	M10	14	55
F761085.TM1201	85	37	30.5	30	21	16	18	21	2	M12	19	60
F761105.TM0801	105	46	37.5	35	26	19	20	25	2	M8	15	89
F761105.TM1001	105	46	37.5	35	26	19	20	25	2	M10	17	90
F761105.TM1201	105	46	37.5	35	26	19	20	25	2	M12	17	97
F761105.TM1401	105	46	37.5	35	26	19	20	25	2	M14	19	98
F761125.TM1201	125	54	44	42.5	31	23	26	28.5	2	M12	18	160
F761125.TM1401	125	54	44	42.5	31	23	26	28.5	2	M14	18	165

### Version F661: with solid hub

art.	D	H	h	d	c	m	d3	h3	d1 <sub>6H</sub>	Q	g
F661045.TM0601	45	21	18	16	11	10	11	1	M6	9	10
F661045.TM0801	45	21	18	16	11	10	11	1	M8	11	14
F661045.TM1001	45	21	18	16	11	10	11	1	M10	10	15
F661065.TM0801	65	28	23.5	22	16.5	11.5	15.5	1.5	M8	11	28
F661065.TM1001	65	28	23.5	22	16.5	11.5	15.5	1.5	M10	11	29
F661065.TM1201	65	28	23.5	22	16.5	11.5	15.5	1.5	M12	13	31
F661085.TM0801	85	37	30.5	30	21	16	21	2	M8	15	53
F661085.TM1001	85	37	30.5	30	21	16	21	2	M10	14	55
F661085.TM1201	85	37	30.5	30	21	16	21	2	M12	19	60
F661105.TM0801	105	46	37.5	35	26	19	25	2	M8	15	89
F661105.TM1001	105	46	37.5	35	26	19	25	2	M10	17	90
F661105.TM1201	105	46	37.5	35	26	19	25	2	M12	17	97
F661105.TM1401	105	46	37.5	35	26	19	25	2	M14	19	98
F661125.TM1201	125	54	44	42.5	31	23	28.5	2	M12	18	160
F661125.TM1401	125	54	44	42.5	31	23	28.5	2	M14	18	165
F661125.TM1601	125	54	44	42.5	31	23	28.5	2	(*)M16	21	177
F661125.TM1801	125	54	44	42.5	31	23	28.5	2	(*)M18	21	182



Stock availability as % (🛒)  
90% (●) - 40% (●) - 5% (●)

# F662



## 3-LOBE SOLID HANDWHEEL WITH INSERT AND SMOOTH BORE

### Materials:

Reinforced polyamide.  
Resistant to oils and greases.

### Surface finish:

Satin.

### Colour:

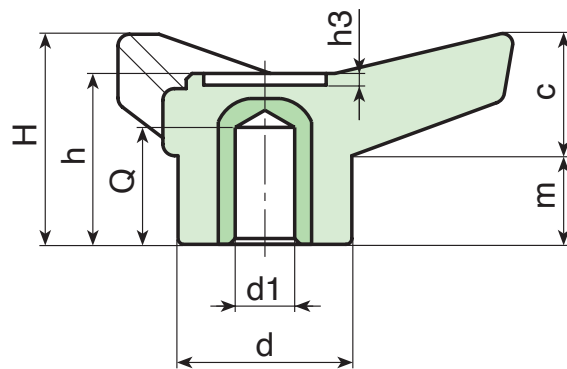
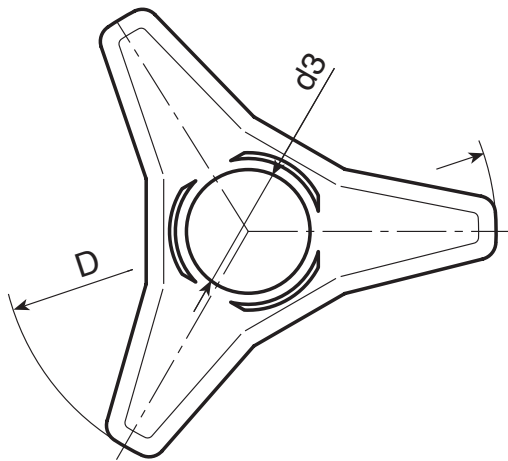
Black (RAL 9011).

### Inserts:

Galvanised steel insert with blind smooth bore (bore tolerance H10).

### Special Requests:

- Upon request and for special quantities inserts can be supplied with custom hole diameter d1.
- Upon request and for special quantities inserts can be supplied in different materials.
- Upon request and for special quantities available in the colours indicated in the chart (attention: reduced range) [page 807].



🛒	Art.	D	H	h	d	c	m	d3	h3	dm	d1 <sub>H10</sub>	Q	📦
●	F662045.TD0601	45	21	18	16	11	10	11	1	-	6	8	14
●	F662065.TD0501	65	28	23.5	22	16.5	11.5	15.5	1.5	10	5	13	36
●	F662065.TD1001	65	28	23.5	22	16.5	11.5	15.5	1.5	10	10	13	34
●	F662085.TD0501	85	37	30.5	30	21	16	21	2	16	5	19	72
●	F662085.TD1001	85	37	30.5	30	21	16	21	2	16	10	19	70
●	F662085.TD1201	85	37	30.5	30	21	16	21	2	16	12	19	69
●	F662085.TD1401	85	37	30.5	30	21	16	21	2	16	14	19	65
●	F662105.TD0501	105	46	37.5	35	26	19	25	2	18	5	24	100
●	F662105.TD1201	105	46	37.5	35	26	19	25	2	18	12	24	98
●	F662105.TD1401	105	46	37.5	35	26	19	25	2	18	14	24	95
●	F662105.TD1601	105	46	37.5	35	26	19	25	2	18	16	24	90
●	F662125.TD0801	125	54	44	42.5	31	23	28	2	22	8	26	192

Attention: for a minimum of 50 pieces the diameter d1 can be produced with the requested dimensions with H10 tolerance.  
Dm = Maximum obtainable diameter for subsequent machining (widening).



Stock availability as % (🛒)  
90% (●) - 40% (●) - 5% (●)

# F663-F763



## 3-LOBE SOLID HANDWHEEL WITH THREADED THROUGH-HOLE INSERT

### Materials:

Reinforced polyamide. Resistant to oils and greases.

### Surface finish:

Satin.

### Colour:

Black (RAL 9011).

### Inserts:

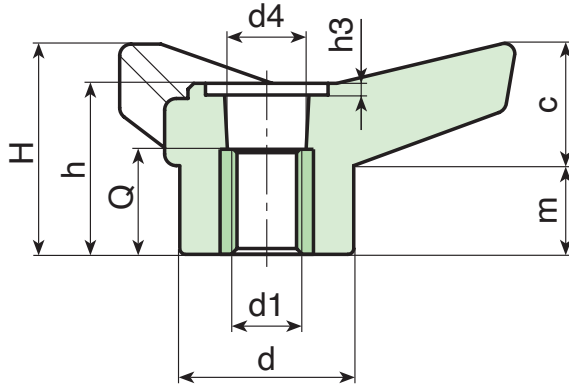
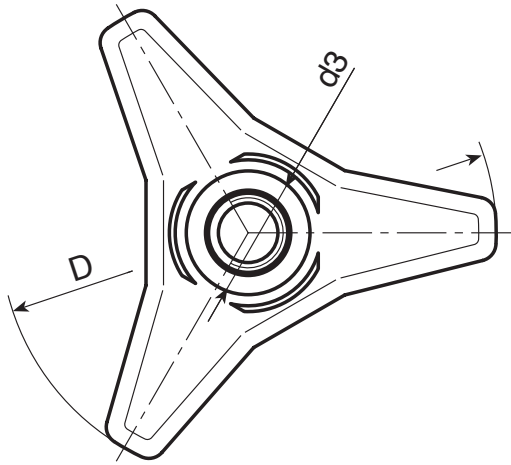
Brass insert with threaded through hole (thread tolerance 6H).  
 (\*) Galvanised steel insert with threaded through hole (thread tolerance 6H).

### Hub:

Solid Hub

### Special requests:

- Upon request and for special quantities inserts can be supplied in different materials.
- Upon request and for special quantities available in the colours indicated in the chart on page 807.



### Version F763: with lightweight hub

art.	D	H	h	d	c	m	d2	d3	d4	h3	d1 <sub>6H</sub>	Q	g
F763085.TM0801	85	37	30.5	30	21	16	18	21	16	2	M8	13.5	50
F763085.TM1001	85	37	30.5	30	21	16	18	21	16	2	M10	13.5	52
F763085.TM1201	85	37	30.5	30	21	16	18	21	16	2	M12	13.5	52
F763105.TM1001	105	46	37.5	35	26	19	20	25	23.5	2	M10	23	88
F763105.TM1201	105	46	37.5	35	26	19	20	25	23.5	2	M12	23	88
F763105.TM1401	105	46	37.5	35	26	19	20	25	23.5	2	M14	21	91
F763125.TM1201	125	54	44	42.5	31	23	26	28.5	26	2	M12	31	152
F763125.TM1401	125	54	44	42.5	31	23	26	28.5	26	2	M14	31	160

### Version F663: with solid hub

art.	D	H	h	d	c	m	d3	d4	h3	d1 <sub>6H</sub>	Q	g
F663045.TM0601	45	21	18	16	11	10	11	10	1	M6	12.5	11
F663045.TM0801	45	21	18	16	11	10	11	10	1	M8	12.5	11
F663045.TM1001	45	21	18	16	11	10	11	10	1	M10	12.5	11
F663065.TM0801	65	28	23.5	22	16.5	11.5	15.5	13.5	1.5	M8	15.5	25
F663065.TM1001	65	28	23.5	22	16.5	11.5	15.5	13.5	1.5	M10	15.5	26
F663065.TM1201	65	28	23.5	22	16.5	11.5	15.5	13.5	1.5	M12	15.5	28
F663085.TM0801	85	37	30.5	30	21	16	21	16	2	M8	13.5	50
F663085.TM1001	85	37	30.5	30	21	16	21	16	2	M10	13.5	52
F663085.TM1201	85	37	30.5	30	21	16	21	16	2	M12	13.5	52
F663105.TM1001	105	46	37.5	35	26	19	25	23.5	2	M10	23	88
F663105.TM1201	105	46	37.5	35	26	19	25	23.5	2	M12	23	88
F663105.TM1401	105	46	37.5	35	26	19	25	23.5	2	M14	21	91
F663105.TM1601	105	46	37.5	35	26	19	25	23.5	2	(*)M16	21	108
F663125.TM1201	125	54	44	42.5	31	23	28.5	26	2	M12	31	152
F663125.TM1401	125	54	44	42.5	31	23	28.5	26	2	M14	31	160
F663125.TM1601	125	54	44	42.5	31	23	28.5	26	2	(*)M16	31	180
F663125.TM1801	125	54	44	42.5	31	23	28.5	26	2	(*)M18	31	186



Stock availability as % (🛒)  
 90% (●) - 40% (●) - 5% (●)

# F664-F764



## STAR HANDWHEEL WITH STEEL HUB AND THREADED STUD

### Materials:

Reinforced polyamide. Resistant to oils and greases.

### Surface finish:

Satin.

### Colour:

Black (RAL 9011).

### Inserts:

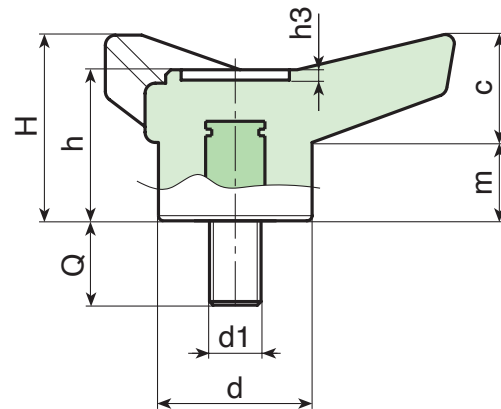
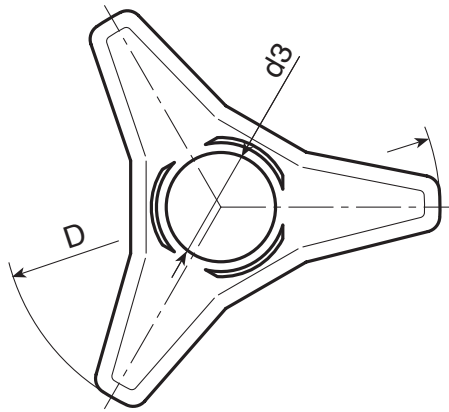
Galvanised steel threaded stud (thread tolerance 6g).

### Hub:

Solid Hub

### Special requests:

- Upon request and for special quantities inserts can be supplied with customised lengths.
- Upon request and for special quantities inserts can be supplied in different materials.
- Upon request and for special quantities available in the colours indicated in the chart on page 807.



### Version F764: with lightweight hub

art.	D	H	h	d	c	m	d2	d3	h3	LM	d1 <sub>6g</sub>	Q	g
F764085.TM08X..01	85	37	30.5	30	21	16	18	21	2	60	M8	20-30-40	61-65-69
F764085.TM10X..01	85	37	30.5	30	21	16	18	21	2	60	M10	20-30-40	66-74-80
F764085.TM12X..01	85	37	30.5	30	21	16	18	21	2	60	M12	20-30	83-89
F764105.TM10X..01	105	46	37.5	35	26	19	20	25	2	80	M10	30-50	116-122
F764105.TM12X..01	105	46	37.5	35	26	19	20	25	2	80	M12	30-50	121-136
F764105.TM14X..01	105	46	37.5	35	26	19	20	25	2	80	M14	A.R.	-
F764125.TM12X..01	125	54	44	42.5	31	23	26	28.5	2	100	M12	A.R.	-
F764125.TM14X..01	125	54	44	42.5	31	23	26	28.5	2	100	M14	A.R.	-

Enter the selected stud length in place of the two dots .. in the item code.

A.R. = Upon request, for a minimum of 150 pieces.

LM = Maximum mouldable length.

### Version F664: with solid hub

art.	D	H	h	d	c	m	d3	h3	LM	d1 <sub>6g</sub>	Q	g
F664045.TM06X..01	45	21	18	16	11	10	11	1	60	M6	20-30	14-17
F664045.TM08X..01	45	21	18	16	11	10	11	1	60	M8	20-25-30	19-20,5-22
F664045.TM10X..01	45	21	18	16	11	10	11	1	60	M10	A.R.	-
F664065.TM08X..01	65	28	23.5	22	16.5	11.5	15.5	1.5	80	M8	20-25-30	36-37,5-39
F664065.TM10X..01	65	28	23.5	22	16.5	11.5	15.5	1.5	80	M10	20-30-50	43-47-55
F664065.TM12X..01	65	28	23.5	22	16.5	11.5	15.5	1.5	80	M12	A.R.	-
F664085.TM08X..01	85	37	30.5	30	21	16	21	2	60	M8	20-25-30	61-65-69
F664085.TM10X..01	85	37	30.5	30	21	16	21	2	60	M10	25-30-40	66-74-80
F664085.TM12X..01	85	37	30.5	30	21	16	21	2	60	M12	20-30-40	83-87-94
F664105.TM10X..01	105	46	37.5	35	26	19	25	2	80	M10	20-30-40	113-116-122
F664105.TM12X..01	105	46	37.5	35	26	19	25	2	80	M12	30-50	121-136
F664125.TM18X..01	125	54	44	42.5	31	23	28.5	2	100	M18	A.R.	-

Enter the selected stud length in place of the two dots .. in the item code.

A.R. = Upon request, for a minimum of 150 pieces.

LM = Maximum mouldable length.



Stock availability as % (🛒)  
90% (●) - 40% (●) - 5% (●)



**QUALITY  
FUSION,  
A RARE SPI**



**BOTECO®**