



**BOTECO®**

YOUR MECHANICAL COMPONENT

## GROUP - G

### LOCKING HANDWHEELS





Enjoy the marvel of **CONVENIENCE.**



**BOTECO<sup>®</sup>**

# G630



## 4 LOBE HANDWHEEL WITH INDEXED INSERT (PUSH TO USE) AND THREADED INSERT

### Materials:

(3-4) Special high resistance glass fiber reinforced technopolymer.  
Resistant to oils and greases.

### Surface finish:

Satin.

### Colour:

(3-4) Black. (RAL 9011).

### Central fixing button:

(1) Red polyamide button (RAL 3000 code 16).

### Alternative handwheel and button colour:

Orange (RAL 2004 cod. 02).  
Blue (RAL 5015 cod. 07).  
Yellow (RAL 1021 cod. 10).  
Red (RAL 3000 cod. 16).  
Green (RAL 6024 cod. 17).  
Grey (RAL 7035 cod. 13).  
Black (RAL 9001 code 01).

### Inserts:

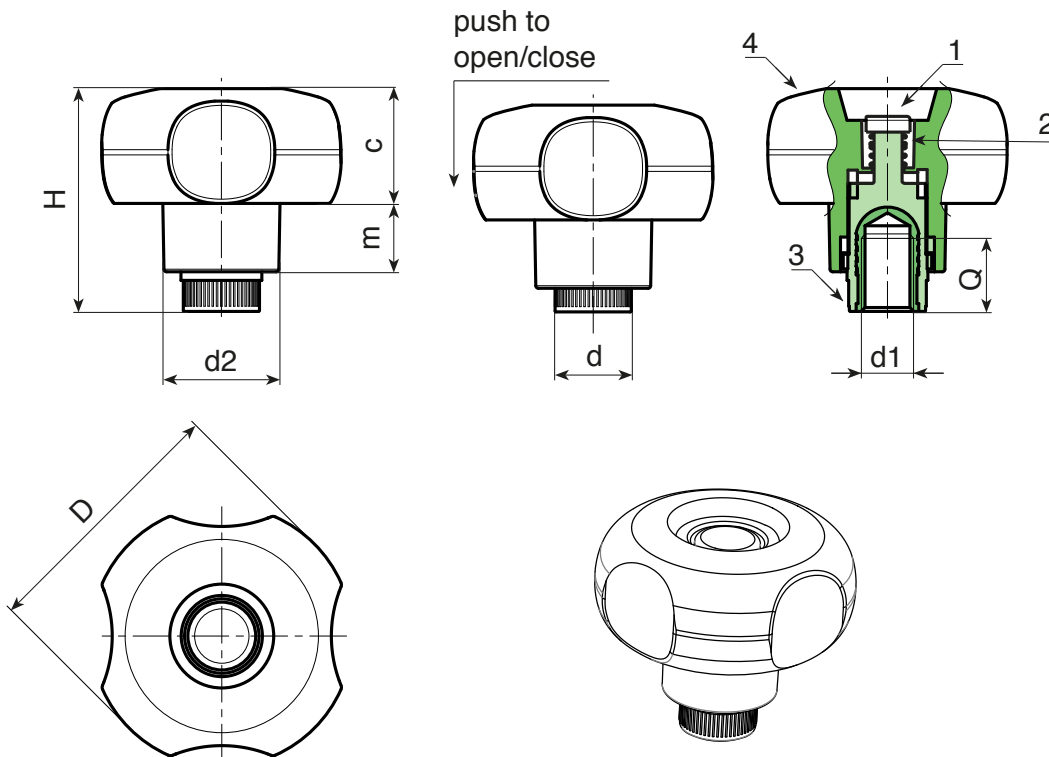
Brass insert with female threaded hole (thread tolerance 6H).

### Spring:

Stainless steel spring (Aisi 302).

### Special requests:

- Upon request and for special quantities inserts can be supplied in different materials.
- Upon request and for special quantities available in the colours indicated in the chart [page 807].



🛒	art.	D	H	d2	d	m	c	d1 <sub>6H</sub>	Q	📦
●	G63050.TM060116	49	42.5	22	15	13	22	M6	14	37
●	G63050.TM080116	49	42.5	22	15	13	22	M8	14	37
●	G63050.TM100116	49	42.5	22	15	13	22	M10	14	38

# G632



## 4 LOBE HANDWHEEL WITH INDEXED INSERT (PUSH TO USE) AND MALE THREAD

### Materials:

(3-4) Special high resistance glass fiber reinforced technopolymer.  
Resistant to oils and greases.

### Surface finish:

Satin.

### Colour:

(3-4) Black. (RAL 9011).

### Central fixing button:

(1) Red polyamide button (RAL 3000 code 16).

### Alternative handwheel and button colour:

Orange (RAL 2004 cod. 02).  
Blue (RAL 5015 cod. 07).  
Yellow (RAL 1021 cod. 10).  
Red (RAL 3000 cod. 16).  
Green (RAL 6024 cod. 17).  
Grey (RAL 7035 cod. 13).  
Black (RAL 9001 code 01).

### Inserts:

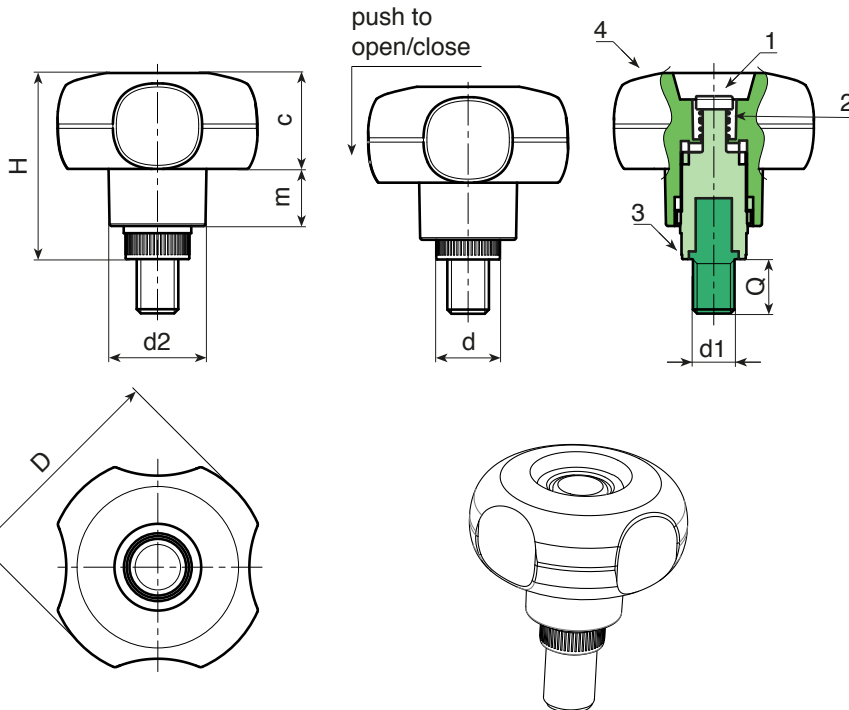
Galvanised steel threaded stud (thread tolerance 6g).

### Spring:

Stainless steel spring (Aisi 302).

### Special requests:

- Upon request and for special quantities inserts can be supplied with customised lengths.
- Upon request and for special quantities inserts can be supplied in different materials.
- Upon request and for special quantities available in the colours indicated in the chart [page 807].



art.	D	H	d2	d	m	c	LM	d1 <sub>6g</sub>	Q	g
G63250.TM06X..0116	49	42.5	22	15	13	22	90	M6	A.R.	-
G63250.TM08X..0116	49	42.5	22	15	13	22	90	M8	A.R.	-
G63250.TM10X..0116	49	42.5	22	15	13	22	90	M10	A.R.	-

LM = Maximum mouldable length.

A.R. = Upon request, for a minimum of 250 pieces.

Enter the selected stud length in place of the two dots . . in the item code.



Stock availability as % (🛒)  
90% (●) - 40% (●) - 5% (●)

# G130

## "EUROMODEL" KNURLED KNOB WITH CAP



### Materials:

Reinforced polyamide. Resistant to oils and greases.

### Surface finish:

Satin.

### Handwheel colour:

Black (RAL 9011).

### Central cap:

Central cap in grey polyamide (RAL 7035 code 13) with black polyamide support ring. Push fit assembling. Removable.

### Alternative cap colours:

Orange (RAL 2004 cod. 02).  
 Blue (RAL 5015 cod. 07).  
 Yellow (RAL 1021 cod. 10).  
 Red (RAL 3000 cod. 16).  
 Green (RAL 6024 cod. 17).  
 Black (RAL 9011 cod. 01).

### Inserts:

#### Version TD:

Galvanised steel insert with smooth through bore (tolerance H10).

#### Version TM:

Galvanised steel insert with threaded through hole (tolerance hole 6H).

### Fixing hole D2:

#### Version TD:

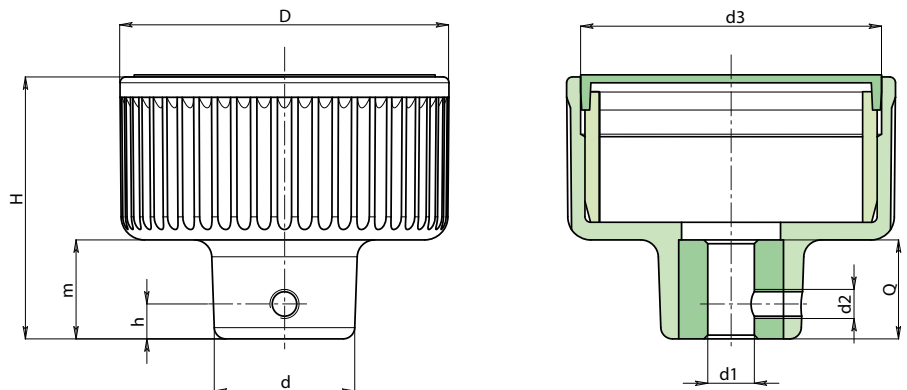
Fixing threaded hole.

#### Version TM:

None.

### Special requests:

- Upon request and for special quantities inserts can be supplied with custom hole diameter d1.
- Upon request and for special quantities inserts can be supplied in different materials.
- Upon request and for special quantities available in the colours indicated in the chart [page 807].



### Version TD: with smooth through hole.

art.	D	d	H	m	h	d2	d3	dm	d1 <sub>H10</sub>	Q	g
G130057.TD080113	57	24	46	17	6	M5	52	12	8	16	105
G130072.TD080113	72	28	53	21	6	M5	67	12	8	20	165
G130094.TD100113	94	36	58	24	6	M5	87	15	10	24	376

Attention: for a minimum of 50 pieces the diameter d1 can be produced with the requested dimensions (H10 tolerance)  
 Dm = Maximum obtainable diameter for subsequent machining (widening).

### Version TM with threaded through hole

art.	D	d	H	m	h	d2	d3	dm	d1 <sub>6H</sub>	Q	g
G130057.TM080113	57	24	46	17	-	-	52	12	M8	16	105
G130072.TM100113	72	28	53	21	-	-	67	12	M10	20	165
G130094.TM120113	94	36	58	24	-	-	87	15	M12	24	376

Attention: for a minimum of 50 pieces the diameter d1 can be produced with the requested dimensions.



# G210

## PUSH-FIT INDICATOR KNOB WITH HALFMOON HOLE



**Materials:**

Reinforced copolymer polypropylene.

**Surface finish:**

Satin.

**Colour:**

Black (RAL 9011).

**Pointer Colour:**

White line obtained by pad printing.

**Hole:**

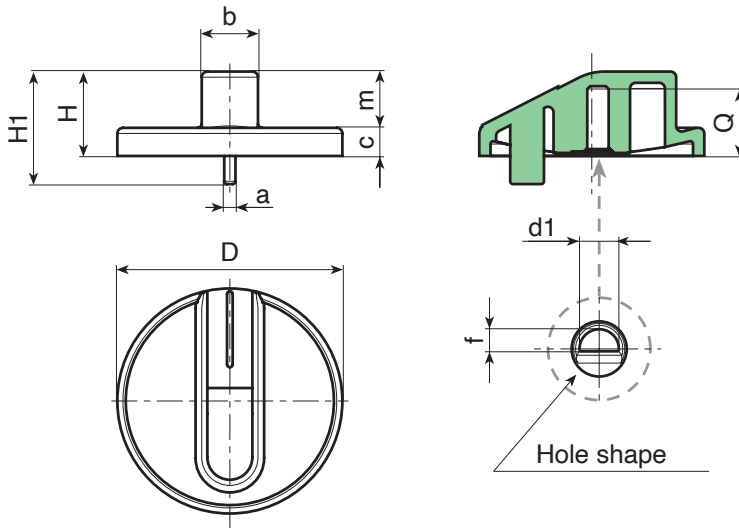
Halfmoon-shaped blind smooth hole obtained by moulding.

**Assembly:**

Push-fit.

**Special requests:**

- None.



art.	D	H	H1	a	b	c	m	f	d1	Q	g
G21040.TG0601Z1	39.5	15	20	2	9.5	5	10	3.8	6	12	5



# G650

## 6-LOBE HANDWHEEL WITH CAP AND THREADED INSERT



### Materials:

Reinforced polyamide.  
Resistant to oils and greases.

### Surface finish:

Satin.

### Colour:

Black (RAL 9011).

### Central Cap:

Grey polyamide (RAL 7035 code 13).

### Alternative Cap colours:

Orange (RAL 2004 cod. 02).  
Blue (RAL 5015 cod. 07).  
Yellow (RAL 1021 cod. 10).  
Red (RAL 3000 cod. 16).  
Green (RAL 6024 cod. 17).  
Black (RAL 9011 cod. 01).



### Inserts:

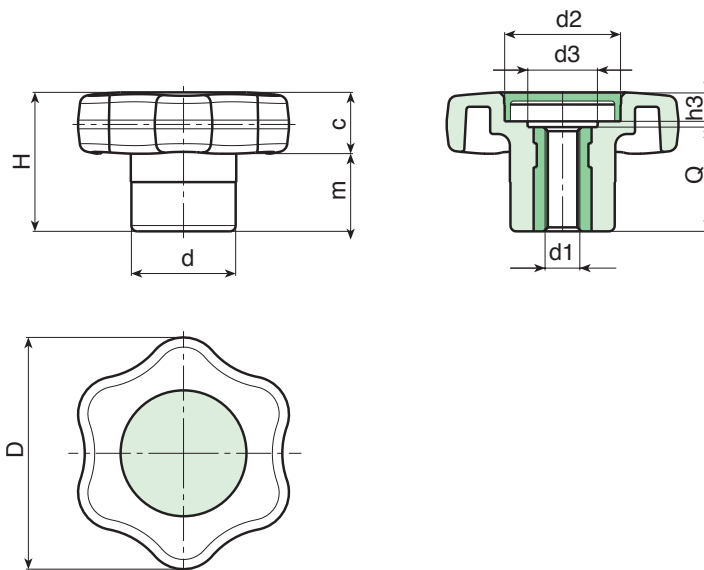
Brass insert with threaded through hole (thread tolerance 6H).

### Special Requests:

- Upon request and for special quantities inserts can be supplied in different materials.
- Upon request and for special quantities available in the colours indicated in the chart [page 807].

### PAD PRINTING SERVICE

Upon request and for special quantities caps can be supplied with custom pad printing.



art.	D	H	d	m	c	d2	d3	h3	d1 <sub>6H</sub>	Q	g
G65040.TM0601	40	24	18	10.5	13.5	20	13	6	M6	18	18
G65040.TM0801	40	24	18	10.5	13.5	20	13	6	M8	18	19
G65040.TM1001	40	24	18	10.5	13.5	20	13	6	M10	18	20

# G651

## 6-LOBE HANDWHEEL WITH CAP AND THREADED STUD



### Materials:

Reinforced polyamide.  
Resistant to oils and greases.

### Surface finish:

Satin.

### Colour:

Black (RAL 9011).

### Central Cap:

Grey polyamide (RAL 7035 code 13).

### Alternative Cap colours:

Orange (RAL 2004 cod. 02).  
Blue (RAL 5015 cod. 07).  
Yellow (RAL 1021 cod. 10).  
Red (RAL 3000 cod. 16).  
Green (RAL 6024 cod. 17).  
Black (RAL 9011 cod. 01).

### Inserts:

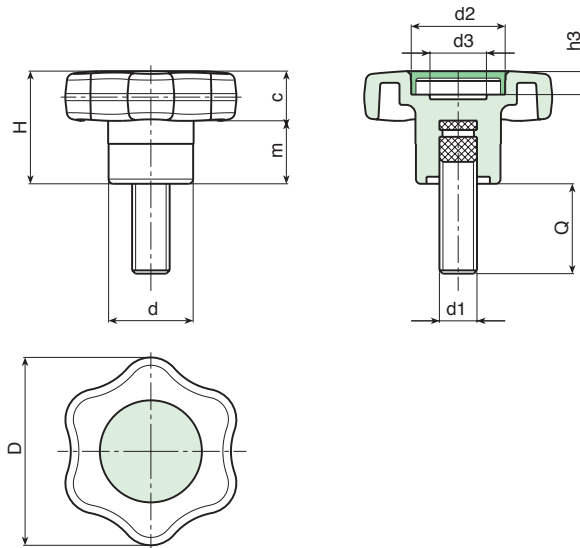
Galvanised steel threaded stud (thread tolerance 6g).

### Special Requests:

- Upon request and for special quantities inserts can be supplied with customised lengths.
- Upon request and for special quantities inserts can be supplied in different materials.
- Upon request and for special quantities available in the colours indicated in the chart [page 807].

### PAD PRINTING SERVICE

Upon request and for special quantities caps can be supplied with custom pad printing.



art.	D	H	d	m	c	d2	d3	h3	d1 <sub>6g</sub>	Q	g
G65140.TM06X..01	40	24	18	10.5	13.5	20	13	6	M6	A.R.	-
G65140.TM08X3001	40	24	18	10.5	13.5	20	13	6	M8	30	24
G65140.TM10X..01	40	24	18	10.5	13.5	20	13	6	M10	A.R.	-

A.R. = Upon request, for a minimum of 100 pieces.

Enter the selected stud length in place of the two dots . . in the item code.





# G730

## 4-LOBE HANDWHEEL WITH THREADED INSERT



### Materials:

Reinforced polyamide. Resistant to oils and greases.

### Surface finish:

Satin.

### Colour:

Black (RAL 9011).

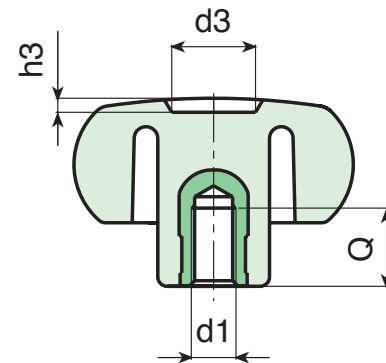
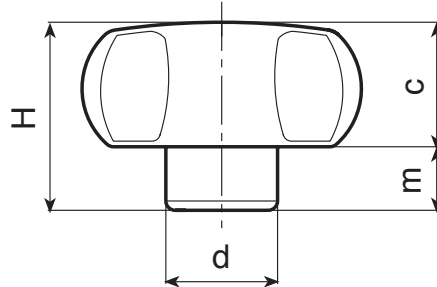
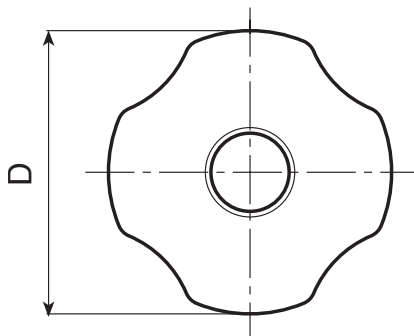
### Inserts:

Brass insert with female threaded hole (thread tolerance 6H).

(\*) Galvanised steel insert with female threaded hole (thread tolerance 6H).

### Special requests:

- Upon request and for special quantities inserts can be supplied in different materials.
- Upon request and for special quantities available in the colours indicated in the chart [page 807].



🛒	art.	D	H	d	c	m	d3	h3	d1 <sub>6H</sub>	Q	📦
●	G73020.TM0401	21	14	11	8.5	5.5	8	1.5	M4	6	5
●	G73020.TM0501	21	14	11	8.5	5.5	8	1.5	M5	6	5
●	G73020.TM0601	21	14	11	8.5	5.5	8	1.5	M6	6	5
●	G73025.TM0401	26	16	12	10	6	10	1.5	M8	7	6
●	G73025.TM0501	26	16	12	10	6	10	1.5	M5	7	6
●	G73025.TM0601	26	16	12	10	6	10	1.5	M6	7	7
●	G73025.TM0801	26	16	12	10	6	10	1.5	M8	7	8
●	G73030.TM0501	30	23	15	13.5	9.5	12	2	M5	13	12
●	G73030.TM0601	30	23	15	13.5	9.5	12	2	M6	10	12
●	G73030.TM0801	30	23	15	13.5	9.5	12	2	M8	16	14
●	G73030.TM1001	30	23	15	13.5	9.5	12	2	M10	16	14
●	G73040.TM0501	40.5	29.5	17	18.5	11	12	3	M5	13	21
●	G73040.TM0601	40.5	29.5	17	18.5	11	12	3	M6	10	21
●	G73040.TM0801	40.5	29.5	17	18.5	11	12	3	M8	14	22
●	G73040.TM1001	40.5	29.5	17	18.5	11	12	3	M10	13	26
●	G73040.TM1201	40.5	29.5	17	18.5	11	12	3	M12	11	30
●	G73050.TM0601	49	32	20.5	21.5	11	14.5	2.5	M6	10	35
●	G73050.TM0801	49	32	20.5	21.5	11	14.5	2.5	M8	14	42
●	G73050.TM1001	49	32	20.5	21.5	11	14.5	2.5	M10	13	43
●	G73050.TM1201	49	32	20.5	21.5	11	14.5	2.5	M12	17	48
●	G73060.TM0801	59	40	23	25	15	24	4	M8	15	60
●	G73060.TM1001	59	40	23	25	15	24	4	M10	14	62
●	G73060.TM1201	59	40	23	25	15	24	4	M12	18	67
●	G73060.TM1401	59	40	23	25	15	24	4	M14	19	70
●	G73060.TM1601	59	40	23	25	15	24	4	(*) M16	17	82
●	G73080.TM1001	79	41	30	24	17	21	3	M10	14	88
●	G73080.TM1201	79	41	30	24	17	21	3	M12	16	88
●	G73080.TM1401	79	41	30	24	17	21	3	M14	19	97
●	G73080.TM1601	79	41	30	24	17	21	3	(*) M16	17	109
●	G73080.TM2001	79	41	30	24	17	21	3	(*) M20	16	115

# G731

## 4-LOBE HANDWHEEL WITH THREADED THROUGH INSERT



### Materials:

Reinforced polyamide. Resistant to oils and greases.

### Surface finish:

Satin.

### Colour:

Black (RAL 9011).

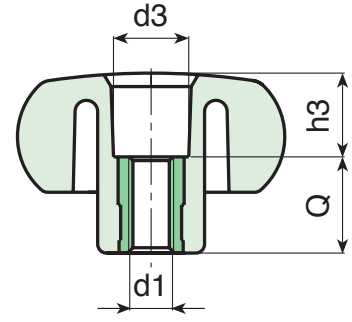
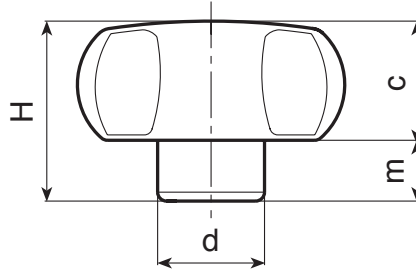
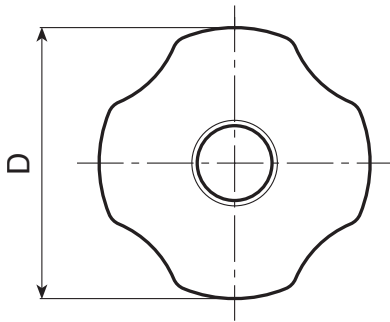
### Inserts:

Brass insert with threaded through hole (thread tolerance 6H).

(\*) Galvanised steel insert with threaded through hole (thread tolerance 6H).

### Special requests:

- Upon request and for special quantities inserts can be supplied in different materials.
- Upon request and for special quantities available in the colours indicated in the chart [page 807].



	art.	D	H	d	c	m	d3	h3	d1 <sub>6H</sub>	Q	g
●	G73120.TM0401	21	14	11	8.5	5.5	8	4.5	M4	9.5	4
●	G73120.TM0501	21	14	11	8.5	5.5	8	7.5	M5	6.5	5
●	G73120.TM0601	21	14	11	8.5	5.5	8	7.5	M6	6.5	5
●	G73125.TM0401	26	16	12	10	6	9	7.5	M8	8.5	5
●	G73125.TM0501	26	16	12	10	6	9	9.5	M5	6.5	6
●	G73125.TM0601	26	16	12	10	6	9	9.5	M6	6.5	6
●	G73125.TM0801	26	16	12	10	6	10.5	1.5	M8	14.5	10
●	G73130.TM0501	30	23	15	13.5	9.5	12	8.5	M5	14.5	11
●	G73130.TM0601	30	23	15	13.5	9.5	12	8.5	M6	14.5	11
●	G73130.TM0801	30	23	15	13.5	9.5	12	8.5	M8	14.5	12
●	G73130.TM1001	30	23	15	13.5	9.5	12	8.5	M10	14.5	13
●	G73140.TM0601	40.5	29.5	15.5	18.5	11	13	11.5	M6	18	21
●	G73140.TM0801	40.5	29.5	15	18.5	11	13	11.5	M8	18	21
●	G73140.TM1001	40.5	29.5	17.5	18.5	11	13	11.5	M10	18	23
●	G73140.TM1201	40.5	29.5	21	18.5	11	13	11.5	M12	18	26
●	G73150.TM0601	49	32	20.5	21.5	11	13.5	14.5	M6	18	37
●	G73150.TM0801	49	32	20.5	21.5	11	13.5	14.5	M8	18	38
●	G73150.TM1001	49	32	20.5	21.5	11	13.5	14.5	M10	18	39
●	G73150.TM1201	49	32	20.5	21.5	11	13.5	14.5	M12	18	40
●	G73160.TM0801	59	40	23	25	15	20	22	M8	18	54
●	G73160.TM1001	59	40	23	25	15	20	22	M10	18	55
●	G73160.TM1201	59	40	23	25	15	20	22	M12	18	55
●	G73160.TM1401	59	40	23	25	15	20	22	M14	18	56
●	G73180.TM1001	79	41	30	24	17	20	23	M10	18	82
●	G73180.TM1201	79	41	30	24	17	20	23	M12	18	79
●	G73180.TM1401	79	41	30	24	17	20	23	M14	18	80
●	G73180.TM1601	79	41	30	24	17	21	15	(*)M16	26	102



# G732

## 4-LOBE HANDWHEEL WITH THREADED STUD



### Materials:

Reinforced polyamide. Resistant to oils and greases.

### Surface finish:

Satin.

### Colour:

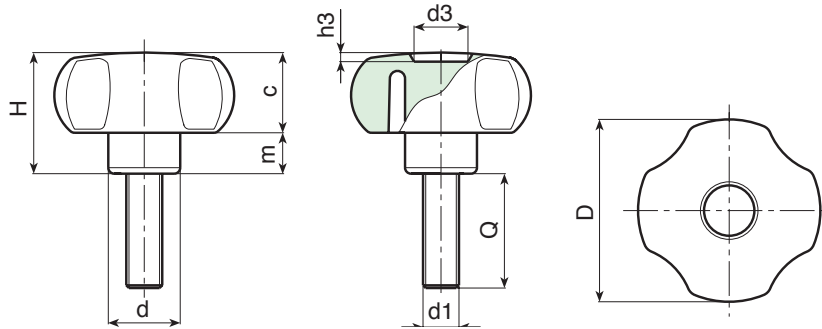
Black (RAL 9011).

### Inserts:

Galvanised steel threaded stud (thread tolerance 6g).

### Special requests:

- Upon request and for special quantities inserts can be supplied with customised lengths.
- Upon request and for special quantities inserts can be supplied in different materials.
- Upon request and for special quantities available in the colours indicated in the chart [page 807].



art.	D	H	d	c	m	d3	h3	LM	d1 <sub>6g</sub>	Q	g
G73220.TM04X..01	21	14	11	8.5	5.5	8	1.5	50	M4	10-16-20	4-4,5-5
G73220.TM05X..01	21	14	11	8.5	5.5	8	1.5	50	M5	10-16-20-30-50	6-6,5-7-8-10
G73220.TM06X..01	21	14	11	8.5	5.5	8	1.5	50	M6	10-16-20-30-40	6,5-7,5-8-9,5-11
G73225.TM04X..01	26	16	12	10	6	10	1.5	95	M4	A.R.	-
G73225.TM05X..01	26	16	12	10	6	10	1.5	95	M5	10-16-20-25	8-8,5-9-9,5
G73225.TM06X..01	26	16	12	10	6	10	1.5	95	M6	10-16-20-25-30	10-11-13-14-15
G73225.TM08X..01	26	16	12	10	6	10	1.5	90	M8	16-20-30-40	14-16-20-24
G73230.TM05X..01	30	23	15	13.5	9.5	12	2	90	M5	20-30	13-14
G73230.TM06X..01	30	23	15	13.5	9.5	12	2	90	M6	10-16-20-30-40-50	14-15-16-18-20-22
G73230.TM08X..01	30	23	15	13.5	9.5	12	2	90	M8	16-20-30-40-50	20-22-25-28-31
G73230.TM10X..01	30	23	15	13.5	9.5	12	2	90	M10	20-50	25-43
G73240.TM06X..01	40.5	29.5	15.5	18.5	11	12	3	100	M6	10-16-20-30-40	23-24-26-28-30
G73240.TM08X..01	40.5	29.5	15	18.5	11	12	3	100	M8	16-20-30-40-50	28-31-34-37-40
G73240.TM10X..01	40.5	29.5	17.5	18.5	11	12	3	100	M10	20-30	38-43
G73240.TM12X..01	40.5	29.5	21	18.5	11	12	3	100	M12	A.R.	-
G73250.TM06X2001	49	32	20.5	21.5	11	14.5	2.5	120	M6	20	43
G73250.TM08X..01	49	32	20.5	21.5	11	14.5	2.5	120	M8	16-20-30-40-50-60	49-51-54-57-60-64
G73250.TM10X..01	49	32	20.5	21.5	11	14.5	2.5	120	M10	15-20-30-40-50-60	55-58-63-68-72-77
G73250.TM12X..01	49	32	20.5	21.5	11	14.5	2.5	120	M12	30-50	77-90
G73260.TM08X..01	59	40	23	25	15	24	4	120	M8	16-20-30-40-50	73-76-79-81
G73260.TM10X..01	59	40	23	25	15	24	4	120	M10	20-30-60	79-84-100
G73260.TM12X..01	59	40	23	25	15	24	4	120	M12	25-30-40-50-60	94-97-104-111-119
G73260.TM14X..01	59	40	23	25	15	24	4	120	M14	A.R.	-
G73280.TM10X..01	79	41	30	24	17	21	3	80	M10	A.R.	-
G73280.TM12X..01	79	41	30	24	17	21	3	80	M12	25-45-50-60	115-132-135-142
G73280.TM14X..01	79	41	30	24	17	21	3	80	M14	A.R.	-
G73280.TM16X..01	79	41	30	24	17	21	3	80	M16	A.R.	-

LM = Maximum mouldable length.

Customised stud length available for a minimum of 100 pieces.

Enter the selected stud length in place of the two dots . . in the item code.



Stock availability as % (🛒)  
90% (●) - 40% (●) - 5% (●)

# G733

## 4-LOBE HANDWHEEL WITH SMOOTH HOLE INSERT



### Materials:

Reinforced polyamide.  
Resistant to oils and greases.

### Surface finish:

Satin.

### Colour:

Black (RAL 9011).

### Inserts:

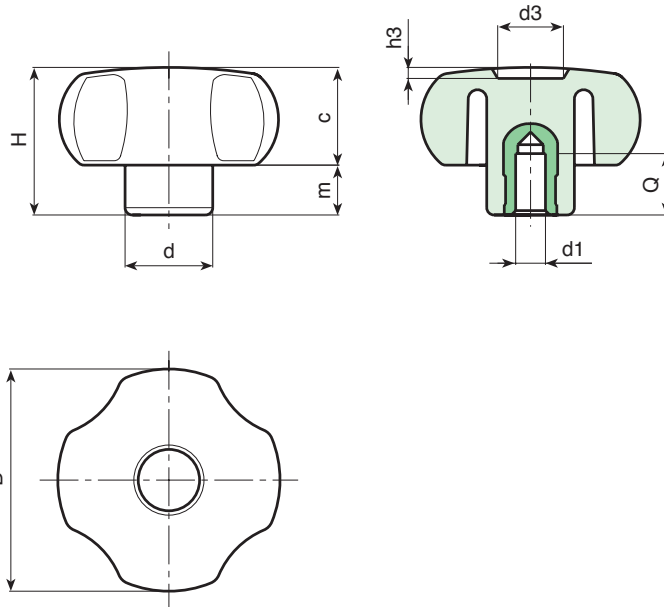
(\*) Brass insert with smooth blind hole (hole tolerance H7).

ATTENTION: hole cannot be widened.

(#) Galvanised steel insert with blind smooth hole (hole tolerance H10).

### Special requests:

- Upon request and for special quantities inserts can be supplied in different materials.
- Upon request and for special quantities available in the colours indicated in the chart [page 807].



	art.	D	H	d	c	m	d3	h3	Dm	d1H7	Q	g
●	G73330.TD0601	30	23	15	13.5	9.5	12	2	-	(*)06	15	16
●	G73330.TD0801	30	23	15	13.5	9.5	12	2	-	(*)08	15	17
●	G73340.TD0601	40.5	29.5	15.5	18.5	11	12	3	-	(*)06	15	24
●	G73340.TD0801	40.5	29.5	15	18.5	11	12	3	-	(*)08	15	28
●	G73340.TD1001	40.5	29.5	17	18.5	11	12	3	-	(*)10	15	30
●	G73350.TD0601	49	32	20.5	21.5	11	14.5	2.5	12	(#)06	18	60
●	G73350.TD0801	49	32	20.5	21.5	11	14.5	2.5	12	(#)08	18	62
●	G73350.TD1001	49	32	20.5	21.5	11	14.5	2.5	12	(#)10	18	63
●	G73360.TP0501	59	40	23	25	15	24	4	12	(#)05	18	90
●	G73360.TD0801	59	40	23	25	15	24	4	12	(#)08	18	93
●	G73360.TD1001	59	40	23	25	15	24	4	12	(#)10	18	96
●	G73380.TP0501	79	41	30	24	17	21	3	18	(#)05	24	165
●	G73380.TD0801	79	41	30	24	17	21	3	18	(#)08	24	159
●	G73380.TD1201	79	41	30	24	17	21	3	18	(#)12	24	153

Attention: (#) for a minimum of 200 pieces the diameter d1 can be produced with the requested dimensions with H10 tolerance.  
Dm = Maximum obtainable diameter for subsequent machining (widening)



Stock availability as % (🛒)  
90% (●) - 40% (●) - 5% (●)

# G734



## 4-LOBE HANDWHEEL WITH ELONGATED HUB AND THREADED INSERT

### Materials:

Reinforced polyamide. Resistant to oils and greases.

### Surface finish:

Satin.

### Colour:

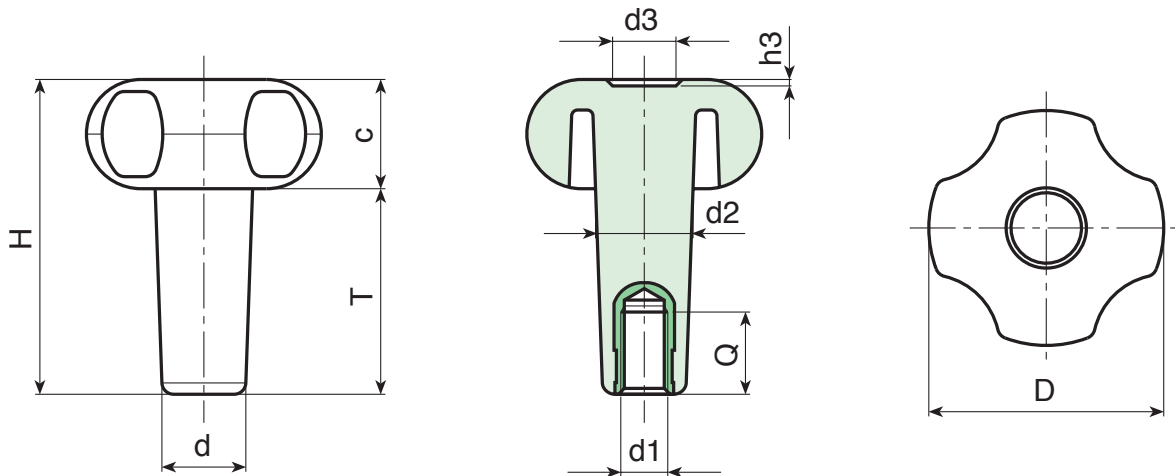
Black (RAL 9011).

### Inserts:

Brass insert with female threaded hole (thread tolerance 6H).

### Special requests:

- Upon request and for special quantities inserts can be supplied in different materials.
- Upon request and for special quantities handwheels can be supplied with custom hubs.



	art.	D	H	T	d	c	d2	d3	h3	d1 <sub>6H</sub>	Q	g
●	G73430.T25M0601	30	37.5	23.5	13.5	14	14.5	12	2	M6	10	15
●	G73430.T35M0601	30	47	33.5	13.5	14	15	12	2	M6	16	16
●	G73430.T35M0801	30	47	33.5	13.5	14	15	12	2	M8	21	17
●	G73440.T35M1001	41	54	35	16.5	19	17	12	3	M10	15	30
●	G73440.T66M0601	41	85	66	16.5	19	18	12	3	M6	18	35
●	G73450.T40M0801	52	61	39	17.5	22	19	14	2.5	M8	15	47
●	G73450.T40M1001	52	61	39	17.5	22	19	14	2.5	M10	15	49
●	G73450.T50M0801	52	71	49	18	22	20.5	14	2.5	M8	15	55
●	G73450.T50M1001	52	71	49	18	22	20.5	14	2.5	M10	15	56
●	G73450.T60M1001	52	80	58	18	22	21	14	2.5	M10	15	62
●	G73460.T60M0801	59	83	58	23	25	24	24	4	M8	21	91
●	G73460.T60M1001	59	83	58	23	25	24	24	4	M10	15	91
●	G73460.T60M1201	59	83	58	23	25	24	24	4	M12	21	96
●	G73460.T80M0801	59	103	78	23	25	24	24	4	M8	21	105
●	G73460.T80M1001	59	103	78	23	25	24	24	4	M10	15	104
●	G73460.T80M1201	59	103	78	23	25	24	24	4	M12	21	107

# G735

+135°  
-30°

PA6  
+G.F.

UL94  
HB

RoHS  
COMPLIANT

## 4-LOBE HANDWHEEL WITH ELONGATED HUB AND THREADED STUD

### Materials:

Reinforced polyamide. Resistant to oils and greases.

### Surface finish:

Satin.

### Colour:

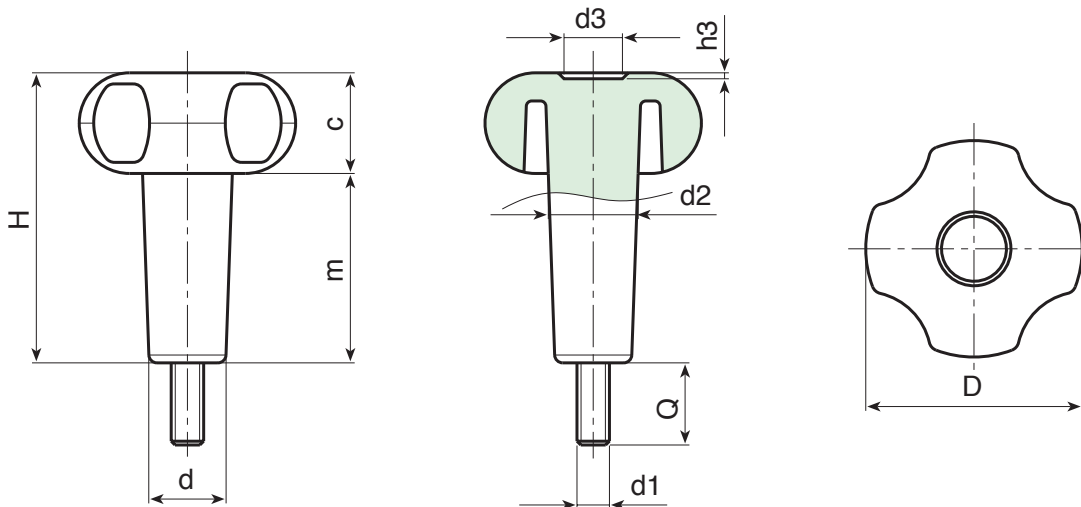
Black (RAL 9011).

### Inserts:

Galvanised steel threaded stud (thread tolerance 6g).

### Special requests:

- Upon request and for special quantities inserts can be supplied with customised lengths.
- Upon request and for special quantities inserts can be supplied in different materials.
- Upon request and for special quantities handwheels can be supplied with custom hubs.



art.	D	H	m	d	c	d2	d3	h3	LM	d1 <sub>6g</sub>	Q	g
G73530.T35M06X1501	30	47	33.5	13.5	14	15	12	2	65	M6	15	23
G73530.T35M08X3001	30	47	33.5	13.5	14	15	12	2	65	M8	30	36
G73540.T35M08X2001	41	54	35	16.5	19	17	12	3	80	M8	20	49
G73540.T35M10X1501	41	54	35	16.5	19	17	12	3	80	M10	15	54
G73550.T40M08X1501	52	61	39	17.5	22	19	14	2.5	90	M8	15	60
G73550.T40M10X4001	52	61	39	17.5	22	19	14	2.5	90	M10	40	82
G73550.T50M08X..01	52	71	49	18	22	20.5	14	2.5	80	M8	A.R.	75
G73550.T60M08X3001	52	80	58	18	22	21	14	2.5	70	M8	30	86
G73560.T60M08X..01	59	83	58	23	25	24	24	4	75	M8	A.R.	115
G73560.T60M10X4001	59	83	58	23	25	24	24	4	75	M10	40	138
G73560.T80M10X..01	59	103	78	23	25	24	24	4	55	M10	A.R.	150

LM = Maximum mouldable length.

A.R. = Customised stud length available for a minimum of 100 pieces.

Enter the selected stud length in place of the two dots . . in the item code.



Stock availability as % (🛒)  
90% (●) - 40% (●) - 5% (●)

# G745-G746



## 4-LOBE HANDWHEEL WITH CAP WITH THREADED INSERT, BLIND AND THROUGH

### Materials:

Reinforced polyamide. Resistant to oils and greases.

### Surface finish:

Satin.

### Colour:

Black (RAL 9011).

### Central cap:

Grey polyamide (RAL 7035 code 13).

### Alternative cap colours:

Orange (RAL 2004 cod. 02).  
 Blue (RAL 5015 cod. 07).  
 Yellow (RAL 1021 cod. 10).  
 Green (RAL 6024 cod. 17).  
 Red (RAL 3000 cod. 16).  
 Black (RAL 9011 cod. 01).

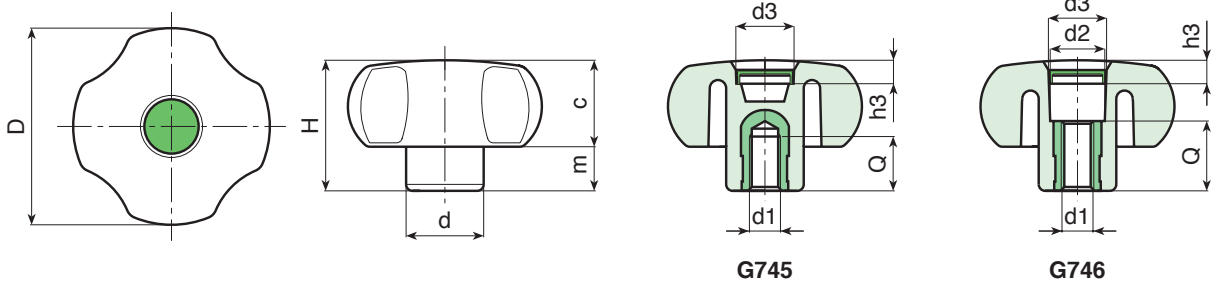
### Inserts:

G745: Brass insert with female threaded hole (thread tolerance 6H).

G746: Brass right through threaded bush (tolerance 6H).

### Special requests:

- Upon request and for special quantities inserts can be supplied in different materials.
- Upon request and for special quantities available in the colours indicated in the chart on page 807.



### Version G745: with blind insert

art.	D	H	d	c	m	d3	h3	d1 <sub>6H</sub>	Q	g
G74540.TM0501	40.5	29.5	17	18.5	11	20	7.5	M5	13	18
G74540.TM0601	40.5	29.5	17	18.5	11	20	7.5	M6	10	18
G74540.TM0801	40.5	29.5	17	18.5	11	20	7.5	M8	14	19
G74540.TM1001	40.5	29.5	17	18.5	11	20	7.5	M10	13	23
G74540.TM1201	40.5	29.5	17	18.5	11	20	7.5	M12	11	27
G74550.TM0601	49	32	20.5	21.5	11	20	7.5	M6	10	32
G74550.TM0801	49	32	20.5	21.5	11	20	7.5	M8	14	39
G74550.TM1001	49	32	20.5	21.5	11	20	7.5	M10	13	40
G74550.TM1201	49	32	20.5	21.5	11	20	7.5	M12	17	44
G74560.TM0801	59	40	23	25	15	22	7.5	M8	15	55
G74560.TM1001	59	40	23	25	15	22	7.5	M10	14	57
G74560.TM1201	59	40	23	25	15	22	7.5	M12	18	62
G74560.TM1401	59	40	23	25	15	22	7.5	M14	19	65

### Version G746: with through insert

art.	D	H	d	c	m	d3	h3	d1 <sub>6H</sub>	Q	g
G74640.TM0501	40.5	29.5	17	18.5	11	20	7.5	M5	18	17
G74640.TM0601	40.5	29.5	17	18.5	11	20	7.5	M6	18	17
G74640.TM0801	40.5	29.5	17	18.5	11	20	7.5	M8	18	18
G74640.TM1001	40.5	29.5	17	18.5	11	20	7.5	M10	18	22
G74640.TM1201	40.5	29.5	17	18.5	11	20	7.5	M12	18	26
G74650.TM0601	49	32	20.5	21.5	11	20	7.5	M6	18	31
G74650.TM0801	49	32	20.5	21.5	11	20	7.5	M8	18	38
G74650.TM1001	49	32	20.5	21.5	11	20	7.5	M10	18	39
G74650.TM1201	49	32	20.5	21.5	11	20	7.5	M12	18	43
G74660.TM0801	59	40	23	25	15	22	7.5	M8	18	54
G74660.TM1001	59	40	23	25	15	22	7.5	M10	18	56
G74660.TM1201	59	40	23	25	15	22	7.5	M12	18	61
G74660.TM1401	59	40	23	25	15	22	7.5	M14	18	64

# G747

## 4-LOBE HANDWHEEL WITH CAP AND THREADED STUD



### Materials:

Reinforced polyamide. Resistant to oils and greases.

### Surface finish:

Satin.

### Colour:

Black (RAL 9011).

### Central cap:

Grey polyamide (RAL 7035 code 13).

### Alternative cap colours:

Orange (RAL 2004 cod. 02).

Blue (RAL 5015 cod. 07).

Yellow (RAL 1021 cod. 10).

Green (RAL 6024 cod. 17).

Red (RAL 3000 cod. 16).

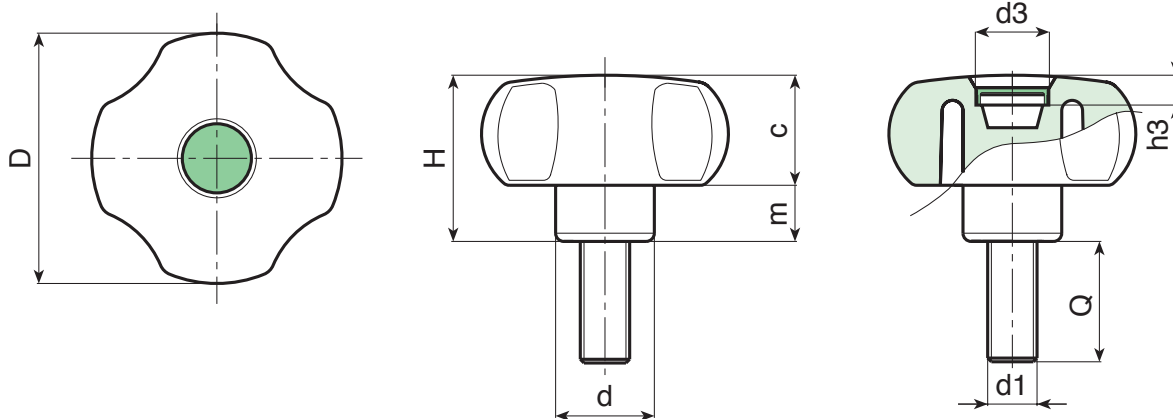
Black (RAL 9011 cod. 01).

### Inserts:

Galvanised steel threaded stud (thread tolerance 6g).

### Special requests:

- Upon request and for special quantities inserts can be supplied with customised lengths.
- Upon request and for special quantities inserts can be supplied in different materials.
- Upon request and for special quantities available in the colours indicated in the chart [page 807].



art.	D	H	d	c	m	d3	h3	LM	d16H	Q	g
G74740.TM06X..01	40.5	29.5	15.5	18.5	11	20	7.5	100	M6	A.R.	-
G74740.TM08X..01	40.5	29.5	15	18.5	11	20	7.5	100	M8	A.R.	-
G74740.TM10X..01	40.5	29.5	17.5	18.5	11	20	7.5	100	M10	A.R.	-
G74740.TM12X..01	40.5	29.5	21	18.5	11	20	7.5	100	M12	A.R.	-
G74750.TM06X..01	49	32	20.5	21.5	11	20	7.5	120	M6	A.R.	-
G74750.TM08X..01	49	32	20.5	21.5	11	20	7.5	120	M8	A.R.	-
G74750.TM10X..01	49	32	20.5	21.5	11	20	7.5	120	M10	A.R.	-
G74750.TM12X..01	49	32	20.5	21.5	11	20	7.5	120	M12	A.R.	-
G74760.TM08X..01	59	40	23	25	15	22	7.5	120	M8	A.R.	-
G74760.TM10X..01	59	40	23	25	15	22	7.5	120	M10	A.R.	-
G74760.TM12X..01	59	40	23	25	15	22	7.5	120	M12	A.R.	-
G74760.TM14X..01	59	40	23	25	15	22	7.5	120	M14	A.R.	-

LM = Maximum mouldable length.

A.R. = Customised stud length available for a minimum of 150 pieces.

Enter the selected stud length in place of the two dots . . in the item code.





# G791

## CYLINDRICAL HANDWHEEL WITH THREADED INSERT



### Materials:

Reinforced polyamide. Resistant to oils and greases.

### Surface finish:

Satin.

### Colour:

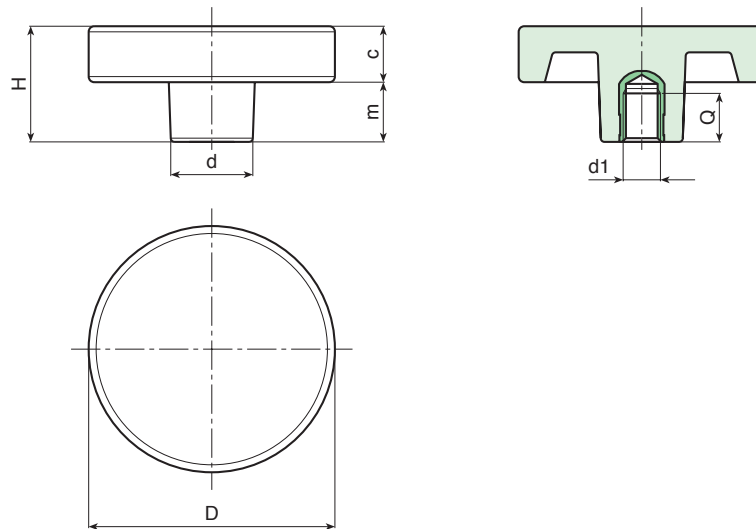
Black (RAL 9011).

### Inserts:

Brass insert with female threaded hole (thread tolerance 6H).

### Special requests:

- Upon request and for special quantities inserts can be supplied in different materials.
- Upon request and for special quantities available in the colours indicated in the chart [page 807].



🛒	art.	D	H	d	c	m	d1 <sub>6H</sub>	Q	📦
●	G79136.TM0601	36	17	18	16	1	M6	10	18
●	G79136.TM0801	36	17	18	16	1	M8	15	18
●	G79136.TM1001	36	17	18	16	1	M10	14	19
●	G79150.TM0801	50	30	22	15	15	M8	15	35
●	G79150.TM1001	50	30	22	15	15	M10	14	36
●	G79150.TM1201	50	30	22	15	15	M12	18	40
●	G79166.TM0801	66	30	22	15	15	M8	15	52
●	G79166.TM1001	66	30	22	15	15	M10	14	55
●	G79166.TM1201	66	30	22	15	15	M12	18	58
●	G79166.TM1401	66	30	22	15	15	M14	19	60

# G792

## CYLINDRICAL HANDWHEEL WITH SMOOTH HOLE INSERT



### Materials:

Reinforced polyamide.  
Resistant to oils and greases.

### Surface finish:

Satin.

### Colour:

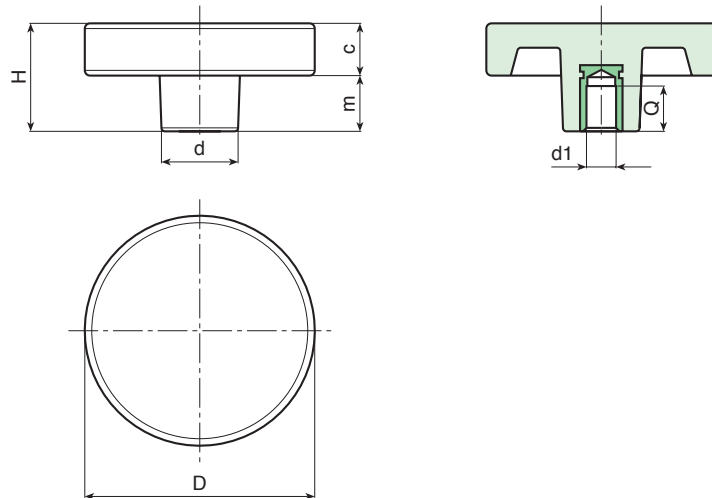
Black (RAL 9011).

### Inserts:

Galvanised steel insert with smooth through bore (tolerance H10).

### Special requests:

- Upon request and for special quantities inserts can be supplied with custom hole diameter  $d_1$ .
- Upon request and for special quantities inserts can be supplied in different materials/with different coatings.
- Upon request and for special quantities available in the colours indicated in the chart [page 807].



art.	D	H	d	c	m	Dm	d1 <sub>H10</sub>	Q	g
G79250.TD0601	50	30	22	15	15	12	06	20	62
G79266.TD1001	65	30	22	15	15	12	10	20	78

Attention: for a minimum of 200 pieces the diameter  $d_1$  can be produced with the requested dimensions with H10 tolerance.  
Dm = Maximum obtainable diameter for subsequent machining (widening)



# G793

## CYLINDRICAL HANDWHEEL WITH THREADED STUD



### Materials:

Reinforced polyamide.  
Resistant to oils and greases.

### Surface finish:

Satin.

### Colour:

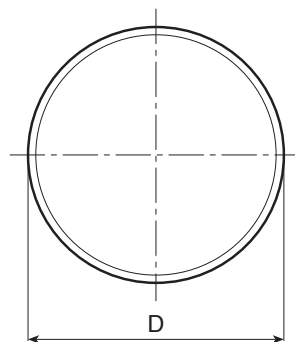
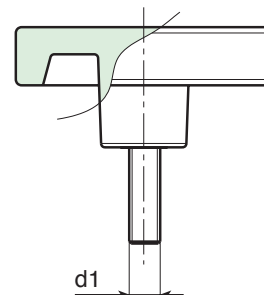
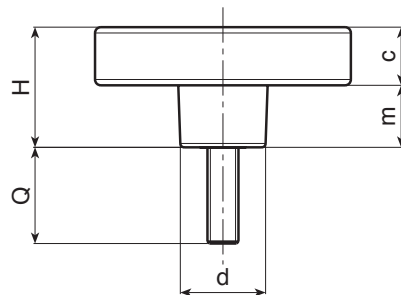
Black (RAL 9011).

### Inserts:

Galvanised steel threaded stud (thread tolerance 6g).

### Special requests:

- Upon request and for special quantities inserts can be supplied with customised lengths.
- Upon request and for special quantities inserts can be supplied in different materials.
- Upon request and for special quantities available in the colours indicated in the chart [page 807].



🛒	art.	D	H	d	c	m	LM	d1 <sub>6g</sub>	Q	📦
●	G79336.TM06X3001	36	17	18	16	1	50	M6	30	20
●	G79336.TM08X3001	36	17	18	16	1	50	M8	30	27
●	G79336.TM10X4001	36	17	18	16	1	50	M10	40	42
●	G79350.TM08X2501	50	30	22	15	15	60	M8	25	44
●	G79350.TM10X2501	50	30	22	15	15	60	M10	25	51
●	G79350.TM12X3001	50	30	22	15	15	60	M12	30	80
●	G79366.TM08X1501	65	30	22	15	15	60	M8	15	58
●	G79366.TM10X5001	65	30	22	15	15	60	M10	50	80
●	G79366.TM12X2501	65	30	22	15	15	60	M12	25	97

LM = Maximum mouldable length.  
Customised stud lengths available for a minimum of 150 pieces.



Stock availability as % (🛒)  
90% (●) - 40% (●) - 5% (●)

# G794

## KNOB WITH THREADED INSERT

+135°  
-30°

PA6  
+G.F.

UL94  
HB

RoHS  
COMPLIANT

### Materials:

Reinforced polyamide.  
Resistant to oils and greases.

### Surface finish:

Satin.

### Colour:

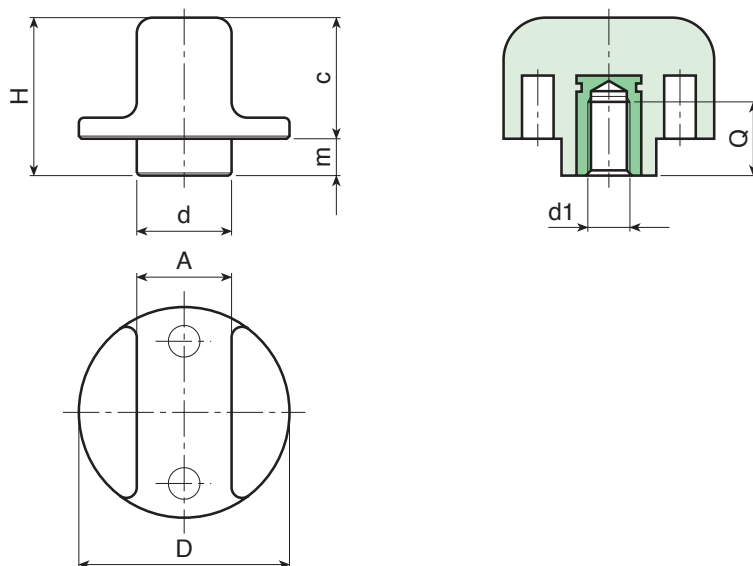
Black (RAL 9011).

### Inserts:

Brass insert with female threaded hole (thread tolerance 6H).

### Special requests:

- Upon request and for special quantities inserts can be supplied in different materials.
- Upon request and for special quantities available in the colours indicated in the chart [page 807].



	art.	D	H	d	A	c	m	d1 <sub>6H</sub>	Q	g
●	G79425.TM0501	25	20	12	10	15	5	M5	11	8
●	G79425.TM0601	25	20	12	10	15	5	M6	9	9
●	G79425.TM0801	25	20	12	10	15	5	M8	8	10
●	G79440.TM0801	40	30	18	18	22	7	M8	15	25
●	G79540.TM1001	40	30	18	18	22	7	M10	14	26
●	G79440.TM1201	40	30	18	18	22	7	M12	14	28

# G795

## KNOB WITH THREADED STUD



### Materials:

Reinforced polyamide.  
Resistant to oils and greases.

### Surface finish:

Satin.

### Colour:

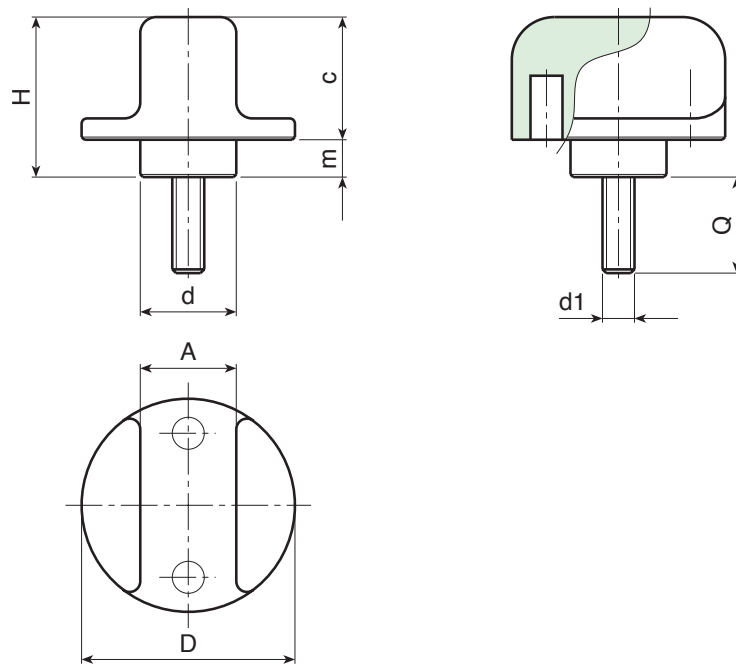
Black (RAL 9011).

### Inserts:

Galvanised steel threaded stud (thread tolerance 6g).

### Special requests:

- Upon request and for special quantities inserts can be supplied with customised lengths.
- Upon request and for special quantities inserts can be supplied in different materials.
- Upon request and for special quantities available in the colours indicated in the chart [page 807].



🛒	art.	D	H	d	A	c	m	LM	d1 <sub>g</sub>	Q	📦
●	G79525.TM05X1601	25	20	12	10	15	5	40	M5	16	12
●	G79525.TM06X3001	25	20	12	10	15	5	40	M6	30	14
●	G79525.TM08X..01	25	20	12	10	15	5	40	M8	A.R.	25
●	G79540.TM08X..01	40	30	18	18	22	7	50	M8	A.R.	40
●	G79540.TM10X3001	40	30	18	18	22	7	50	M10	30	43
●	G79540.TM12X..01	40	30	18	18	22	7	50	M12	A.R.	67

LM = Maximum mouldable length.

A.R. = Customised stud length available for a minimum of 150 pieces.

Enter the selected stud length in place of the two dots . in the item code.



# G796

## KNOB WITH THREADED INSERT



### Materials:

Reinforced polyamide.  
Resistant to oils and greases.

### Surface finish:

Satin.

### Colour:

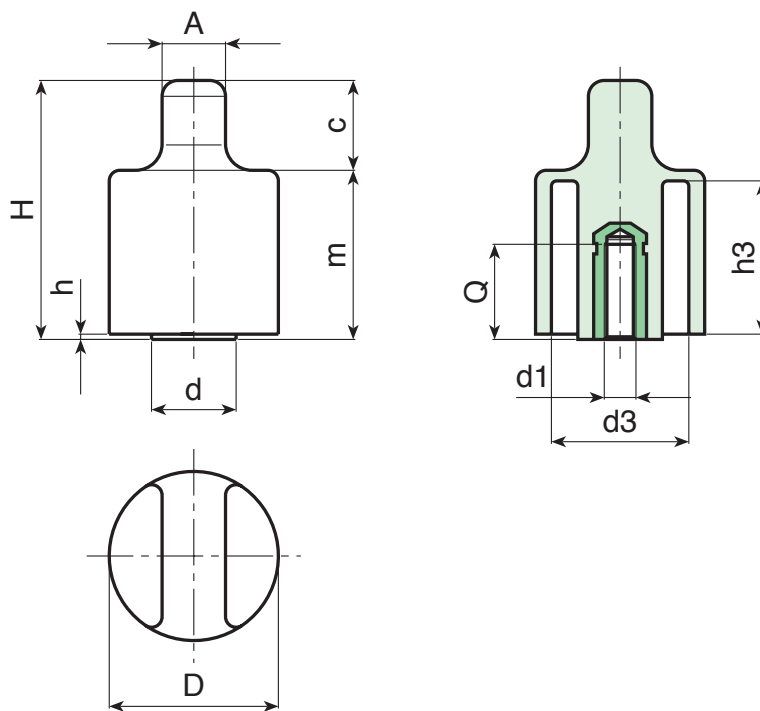
Black (RAL 9011).

### Inserts:

Brass insert with female threaded hole (thread tolerance 6H).

### Special requests:

- Upon request and for special quantities inserts can be supplied in different materials.
- Upon request and for special quantities available in the colours indicated in the chart [page 807].



art.	D	H	d	A	c	m	h	h3	d3	d1 <sub>6H</sub>	Q	g
G79632.TM0601	32	49	16	12	15	34	1	29	25.5	M6	16	33
G79632.TM0801	32	49	16	12	15	34	1	29	25.5	M8	14	35
G79632.TM1001	32	49	16	12	15	34	1	29	25.5	M10	13	36



# G797

## KNOB WITH THREADED STUD



**Materials:**

Reinforced polyamide.  
Resistant to oils and greases.

**Surface finish:**

Satin.

**Colour:**

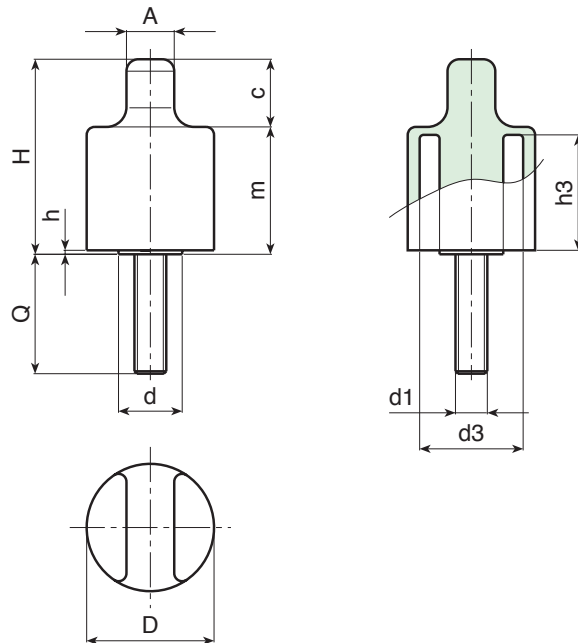
Black (RAL 9011).

**Inserts:**

Galvanised steel threaded stud (thread tolerance 6g).

**Special requests:**

- Upon request and for special quantities inserts can be supplied with customised lengths.
- Upon request and for special quantities inserts can be supplied in different materials.
- Upon request and for special quantities available in the colours indicated in the chart [page 807].



🛒	art.	D	H	d	A	c	m	h	h3	d3	LM	d1 <sub>6g</sub>	Q	📦
●	G79732.TM06X2001	32	49	16	12	15	34	1	29	25.5	60	M6	20	37
●	G79732.TM08X2501	32	49	16	12	15	34	1	29	25.5	60	M8	25	43
●	G79732.TM12X2001	32	49	16	12	15	34	1	29	25.5	60	M12	20	59

Customised stud length available for a minimum of 250 pieces.  
LM = Maximum mouldable length.



# G798

## ELONGATED KNOB WITH THREADED INSERT



**Materials:**

Reinforced polyamide.  
Resistant to oils and greases.

**Surface finish:**

Satin.

**Colour:**

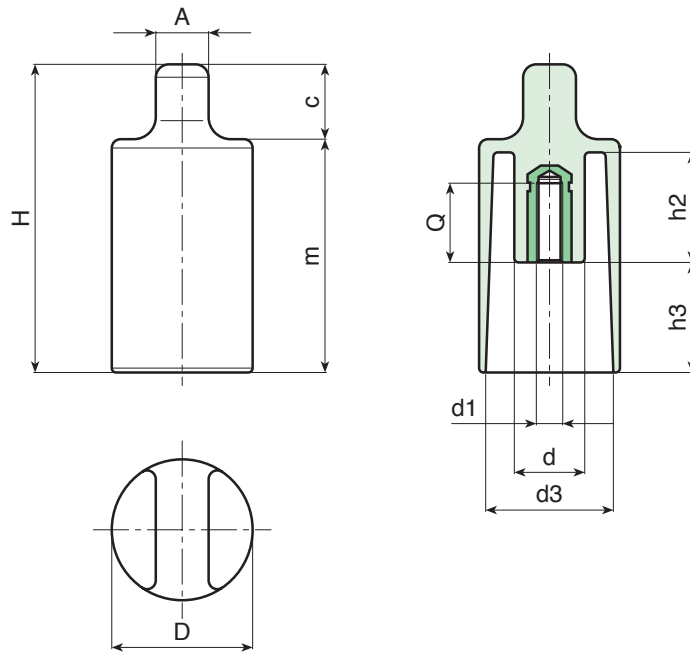
Black (RAL 9011).

**Inserts:**

Brass insert with female threaded hole (thread tolerance 6H).

**Special requests:**

- Upon request and for special quantities inserts can be supplied in different materials.
- Upon request and for special quantities available in the colours indicated in the chart [page 807].



	art.	D	H	d	A	c	m	h2	h3	d3	d1 <sub>6H</sub>	Q	g
●	G79832.TM0601	32	69	12	12	15	54	25	26	28	M6	22	32
●	G79832.TM0801	32	69	12	12	15	54	25	26	28	M8	20	38



Stock availability as % (🛒)  
90% (●) - 40% (●) - 5% (●)



# G799

## ELONGATED KNOB WITH THREADED STUD



**Materials:**

Reinforced polyamide.  
Resistant to oils and greases.

**Surface finish:**

Satin.

**Colour:**

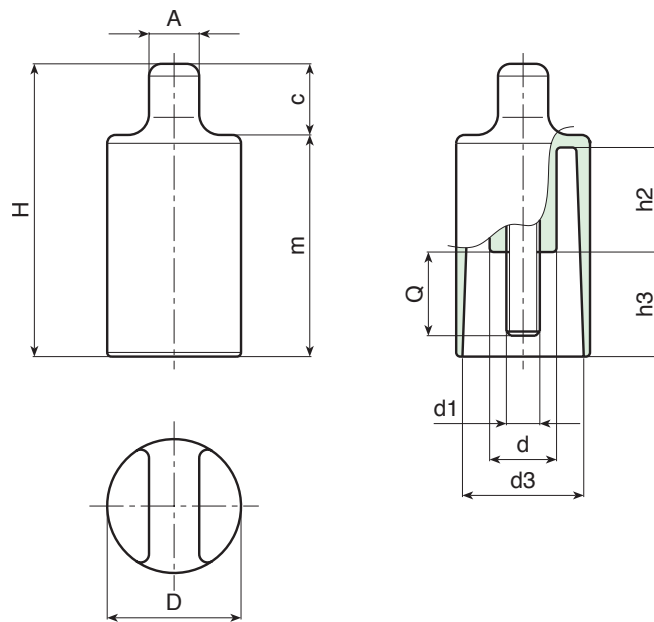
Black (RAL 9011).

**Inserts:**

Galvanised steel threaded stud (thread tolerance 6g).

**Special requests:**

- Upon request and for special quantities inserts can be supplied in different materials.
- Upon request and for special quantities available in the colours indicated in the chart [page 807].



🛒	art.	D	H	d	A	c	m	h2	h3	d3	d1 <sub>6g</sub>	Q	📦
●	G79932.TM06X1601	32	69	12	12	15	54	25	26	28	M6	16	40
●	G79932.TM08X1601	32	69	12	12	15	54	25	26	28	M8	16	48



# GRASP **SOLIDITY** MADE IN ITALY

---

[www.boteco.com](http://www.boteco.com)



**BOTECO**<sup>®</sup>  
YOUR MECHANICAL COMPONENT