



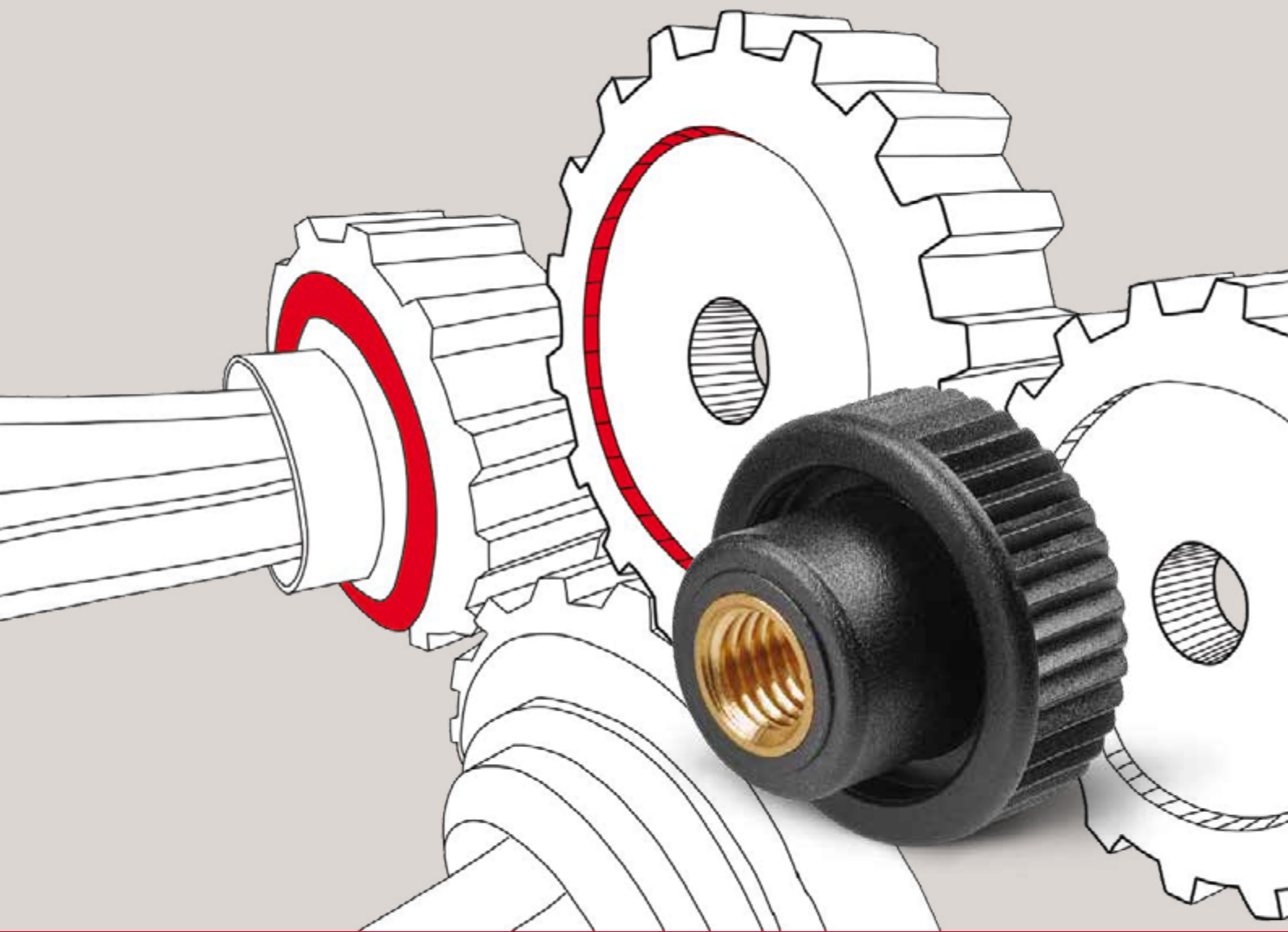
BOTECO®

YOUR MECHANICAL COMPONENT

GROUP - H

KNURLED HANDWHEELS





Even the most complex systems need
WELL DESIGNED mechanisms.



BOTECO[®]

H180



PF

UL94
HB

RoHS
COMPLIANT

KNURLED KNOB WITH BAKELITE HUB AND THREADED HOLE INSERT

Materials:

Phenolic resin.
Resistant to oils and greases.
Resistant to high temperatures.

Surface finish:

Glossy.

Colour:

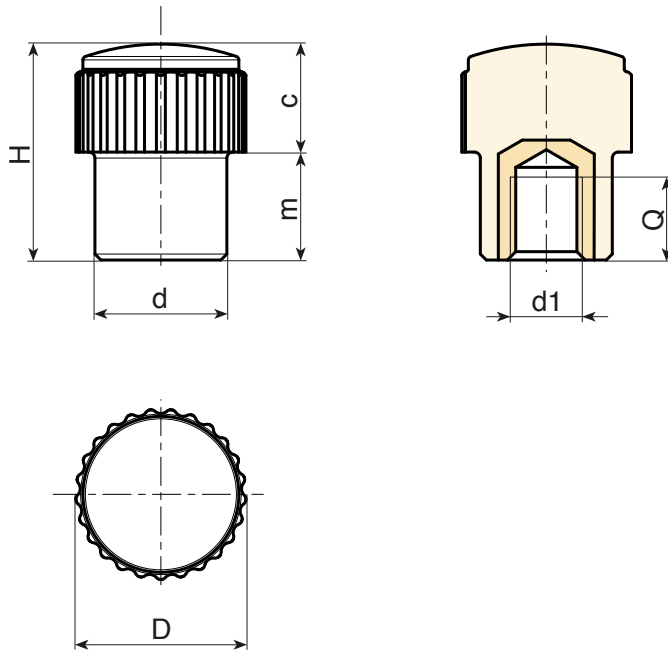
Black (RAL 9011).

Inserts:

Brass insert with female threaded hole (thread tolerance 6H).

Special requests:

- None.



	art.	D	H	d	d16H	Q	
●	H18015.BM0501	15	18	11	M5	11	5

H184

KNURLED BAKELITE KNOB WITH THREADED HOLE INSERT



Materials:

Phenolic resin.
Resistant to oils and greases.
Resistant to high temperatures.

Surface finish:

Glossy.

Colour:

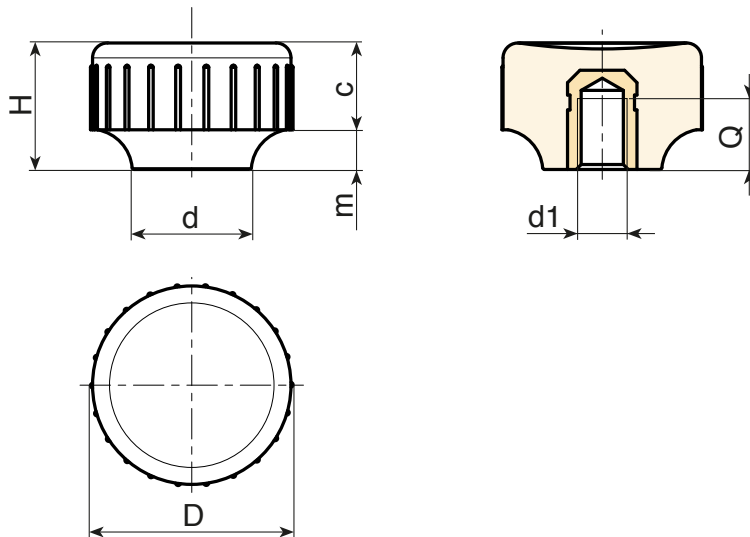
Black (RAL 9011).

Inserts:

Brass insert with female threaded hole (thread tolerance 6H).

Special requests:

- None.



	art.	D	H	d	d1 ^{6H}	Q	
●	H18420.BM0501	20	13	13	M5	8	6
●	H18420.BM0601	20	13	13	M6	7	5

H185

KNURLED BAKELITE KNOB WITH THREADED STUD



Materials:

Phenolic resin.
Resistant to oils and greases.
Resistant to high temperatures.

Surface finish:

Smooth.

Colour:

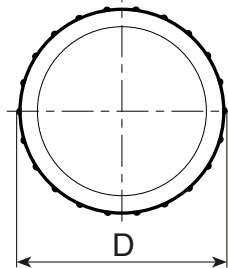
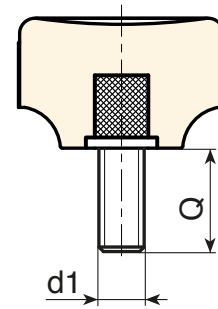
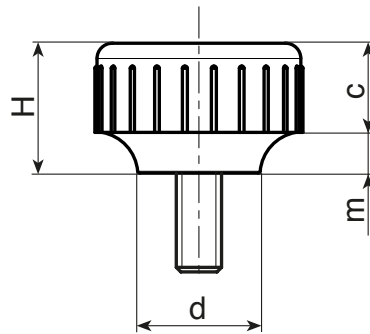
Black (RAL 9011).

Inserts:

Galvanised steel threaded stud (thread tolerance 6g).

Special Requests:

- None.



	art.	D	H	d	m	c	LM	d16g	Q	
-	H18520.BM05X..01	20	13	13	4	9	60	M5	20-30-40	9-10-11
-	H18520.BM06X..01	20	13	13	4	9	60	M6	20-30-40	10-11-12

Enter the selected stud length in place of the two dots . . in the item code. Customised stud length only available for a minimum of 100 pieces.



H765

+135°
-30°

PA6
+G.F.

UL94
HB

RoHS
COMPLIANT

KNURLED HOLLOW HANDWHEEL WITH THREADED THROUGH-HOLE INSERT

Materials:

Reinforced polyamide.
Resistant to oils and greases.

Surface finish:

Satin.

Colour:

Black (RAL 9011).

Inserts:

H765:

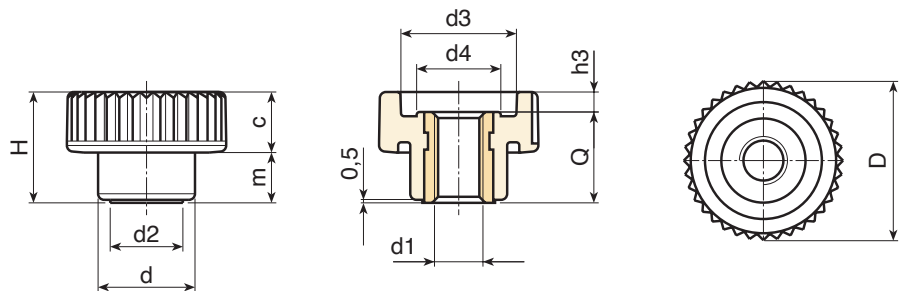
Brass insert with threaded through hole (thread tolerance 6H).

H765PIN:

Stainless steel insert with threaded through hole (Aisi 303) (thread tolerance 6H).

Special Requests:

- Upon request and for special quantities available in the colours indicated in the chart [page 807].



Version H765: brass insert.

art.	D	H	d	m	c	d2	d3	d4	h3	d1 _{6H}	Q	g
H76515.TM0401	15	10.5	10	4.5	6	8	10	7.5	2	M4	8.5	2
H76515.TM0501	15	10.5	10	4.5	6	8	10	7.5	2	M5	8.5	2
H76521.TM0501	21	15	13	6.5	8.5	9.5	15	10.5	2.5	M5	12.5	5
H76521.TM0601	21	15	13	6.5	8.5	9.5	15	10.5	2.5	M6	12.5	5
H76526.TM0601	26	18	16	8.5	9.5	12	19	13	3	M6	15	10
H76526.TM0801	26	18	16	8.5	9.5	12	19	13	3	M8	15	10
H76533.TM0801	32	23	20	10.5	12.5	15	23	16	5	M8	18	16
H76533.TM1001	32	23	20	10.5	12.5	15	23	16	5	M10	18	16
H76540.TM0801	40	28	25	12.5	15.5	18	28	21	6	M8	22	31
H76540.TM1001	40	28	25	12.5	15.5	18	28	21	6	M10	22	32
H76540.TM1201	40	28	25	12.5	15.5	18	28	21	6	M12	22	32
H76540.TM1401	40	28	25	12.5	15.5	18	28	21	6	M14	22	34

Version H765PIN: stainless steel insert Aisi 303.

INOX

art.	D	H	d	m	c	d2	d3	d4	h3	d1 _{6H}	Q	g
H76515.TM0401PIN	15	10.5	10	4.5	6	8	10	7.5	2	M4	8.5	3
H76515.TM0501PIN	15	10.5	10	4.5	6	8	10	7.5	2	M5	8.5	3
H76521.TM0501PIN	21	15	13	6.5	8.5	9.5	15	10.5	2.5	M5	12.5	6
H76521.TM0601PIN	21	15	13	6.5	8.5	9.5	15	10.5	2.5	M6	12.5	6
H76526.TM0601PIN	26	18	16	8.5	9.5	12	19	13	3	M6	15	11.5
H76526.TM0801PIN	26	18	16	8.5	9.5	12	19	13	3	M8	15	11.5
H76533.TM0801PIN	32	23	20	10.5	12.5	15	23	16	5	M8	18	18
H76533.TM1001PIN	32	23	20	10.5	12.5	15	23	16	5	M10	18	18
H76540.TM0801PIN	40	28	25	12.5	15.5	18	28	21	6	M8	22	32
H76540.TM1001PIN	40	28	25	12.5	15.5	18	28	21	6	M10	22	31
H76540.TM1201PIN	40	28	25	12.5	15.5	18	28	21	6	M12	22	34



Stock availability as % (🛒)
90% (●) - 40% (●) - 5% (●)

H766



KNURLED HOLLOW HANDWHEEL WITH THREADED STUD

Materials:

Reinforced polyamide.
Resistant to oils and greases.

Surface finish:

Satin.

Colour:

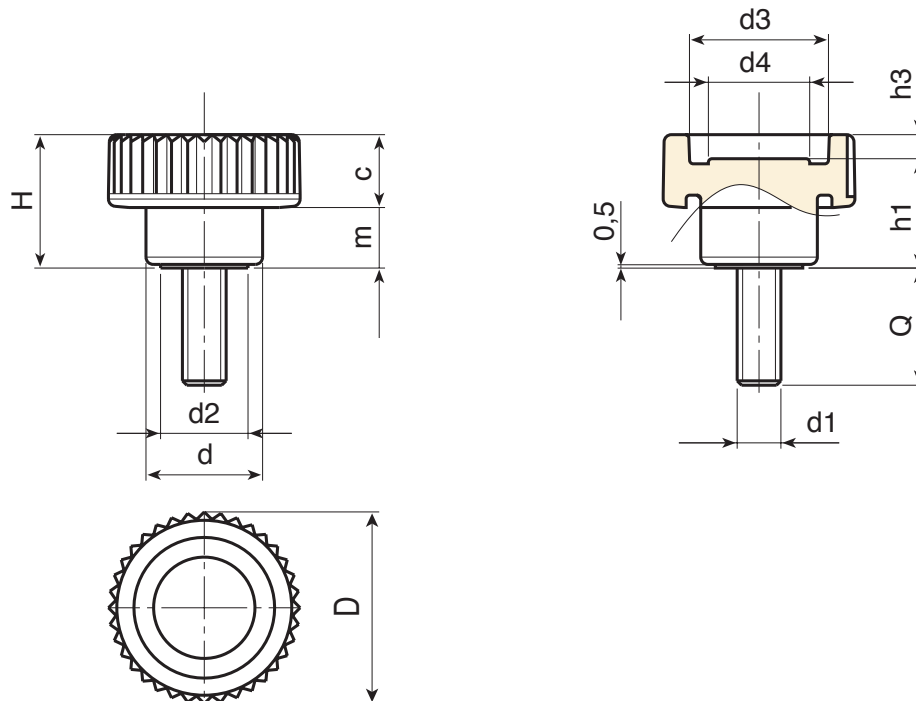
Black (RAL 9011).

Inserts:

Galvanised steel threaded stud (thread tolerance 6g).

Special Requests:

- Upon request and for special quantities inserts can be supplied with customised lengths.
- Upon request and for special quantities inserts can be supplied in different materials.
- Upon request and for special quantities available in the colours indicated in the chart [page 807].



art.	D	H	d	m	c	d2	d3	d4	h1	h3	LM	d16g	Q	
H76615.TM04X..01	15	10.5	10	4.5	6	8	10	7.5	8.5	2	40	M4	11-15-19	2,5-3-3,5
H76615.TM05X..01	15	10.5	10	4.5	6	8	10	7.5	8.5	2	40	M5	11-15-19	4-4,5-5
H76621.TM05X..01	21	15	13	6.5	8.5	9.5	15	10.5	12.5	2.5	40	M5	10-16-20-30	6,5-6,5-7,5-9,5
H76621.TM06X..01	21	15	13	6.5	8.5	9.5	15	10.5	12.5	2.5	40	M6	10-16-20-25	7,5-8,5-9-10,5
H76626.TM06X..01	26	18	16	8.5	9.5	12	19	13	15	3	80	M6	10-16-20-25	10-11-11,5-12,5
H76626.TM08X..01	26	18	16	8.5	9.5	12	19	13	15	3	80	M8	16-20-25	15,5-16,5-18,5
H76633.TM08X..01	32	23	20	10.5	12.5	15	23	16	18	5	80	M8	16-20-30	21-24-30
H76633.TM10X..01	32	23	20	10.5	12.5	15	23	16	18	5	80	M10	20-30-40	30-30,5-35,5
H76640.TM08X..01	40	28	25	12.5	15.5	18	28	21	22	6	100	M8	16-30-40	29,5-38-44
H76640.TM10X3001	40	28	25	12.5	15.5	18	28	21	22	6	100	M10	30	46
H76640.TM12X5001	40	28	25	12.5	15.5	18	28	21	22	6	100	M12	50	78
H76640.TM14X..01	40	28	25	12.5	15.5	18	28	21	22	6	100	M14	A.R.	-

Enter the selected stud length in place of the two dots . . in the item code.
A.R. = Customised stud length only available for a minimum of 250 pieces.
LM = maximum mouldable length.



Stock availability as % ()
90% (●) - 40% (●) - 5% (●)

H766CIN

+135°
-30°

PA6
+G.F.

UL94
HB

RoHS
COMPLIANT

KNURLED HOLLOW HANDWHEEL WITH STAINLESS STEEL THREADED STUD

INOX

Materials:

Reinforced polyamide.
Resistant to oils and greases.

Surface finish:

Satin.

Colour:

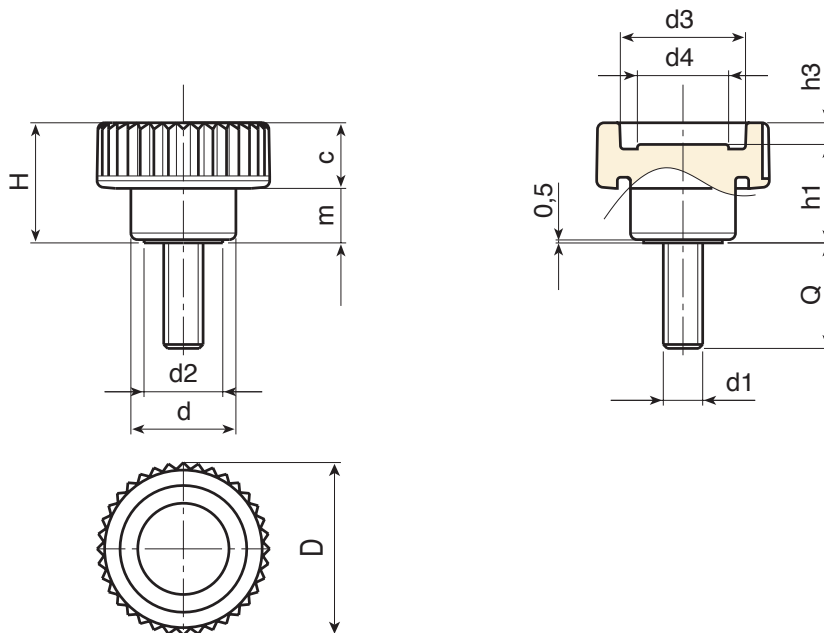
Black (RAL 9011).

Inserts:

Stainless steel threaded stud (Aisi 303) (thread tolerance 6g).

Special Requests:

- Upon request and for special quantities inserts can be supplied with customised lengths.
- Upon request and for special quantities available in the colours indicated in the chart [page 807].



INOX

	art.	D	H	d	m	c	d2	d3	d4	h1	h3	LM	d16g	Q	g
●	H76615.TM04X..01CIN	15	10.5	10	4.5	6	8	10	7.5	8.5	2	40	M4	A.R.	-
●	H76615.TM05X..01CIN	15	10.5	10	4.5	6	8	10	7.5	8.5	2	40	M5	A.R.	-
●	H76621.TM05X1601CIN	21	15	13	6.5	8.5	9.5	15	10.5	12.5	2.5	40	M5	16	9.5
●	H76621.TM06X..01CIN	21	15	13	6.5	8.5	9.5	15	10.5	12.5	2.5	40	M6	A.R.	-
●	H76626.TM06X..01CIN	26	18	16	8.5	9.5	12	19	13	15	3	80	M6	A.R.	-
●	H76626.TM08X2001CIN	26	18	16	8.5	9.5	12	19	13	15	3	80	M8	20	16.5
●	H76633.TM08X4001CIN	32	23	20	10.5	12.5	15	23	16	18	5	80	M8	40	36
●	H76633.TM10X..01CIN	32	23	20	10.5	12.5	15	23	16	18	5	80	M10	A.R.	-
●	H76640.TM08X..01CIN	40	28	25	12.5	15.5	18	28	21	22	6	100	M8	A.R.	-
●	H76640.TM10X..01CIN	40	28	25	12.5	15.5	18	28	21	22	6	100	M10	A.R.	-
●	H76640.TM12X..01CIN	40	28	25	12.5	15.5	18	28	21	22	6	100	M12	A.R.	-
●	H76640.TM14X..01CIN	40	28	25	12.5	15.5	18	28	21	22	6	100	M14	A.R.	-

Enter the selected stud length in place of the two dots . . in the item code.

A.R. = Customised stud length only available for a minimum of 250 pieces.

LM = maximum mouldable length.



Stock availability as % (🛒)
90% (●) - 40% (●) - 5% (●)

H767



KNURLED HOLLOW HANDWHEEL WITH FEMALE THREADED INSERT

Materials:

Reinforced polyamide.
Resistant to oils and greases.

Surface finish:

Satin.

Colour:

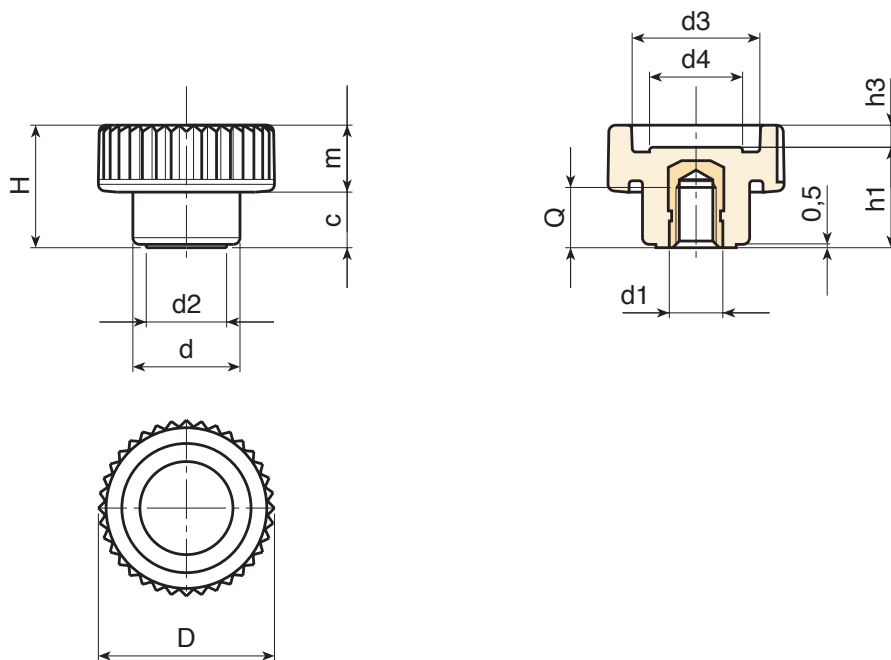
Black (RAL 9011).

Inserts:

Brass insert with female threaded hole (thread tolerance 6H).

Special Requests:

- Upon request and for special quantities inserts can be supplied in different materials.
- Upon request and for special quantities available in the colours indicated in the chart [page 807].



	art.	D	H	d	m	c	d2	d3	d4	h1	h3	d1 _{6H}	Q	📦
●	H76721.TM0501	21	15	13	6.5	8.5	9.5	15	10.5	12.5	2.5	M5	7	5.5
●	H76721.TM0601	21	15	13	6.5	8.5	9.5	15	10.5	12.5	2.5	M6	7	6
●	H76726.TM0601	26	18	16	8.5	9.5	12	19	13	15	3	M6	9	8
●	H76726.TM0801	26	18	16	8.5	9.5	12	19	13	15	3	M8	8	8.5
●	H76733.TM0801	32	23	20	10.5	12.5	15	23	16	18	5	M8	11	15.5
●	H76733.TM1001	32	23	20	10.5	12.5	15	23	16	18	5	M10	10	16
●	H76740.TM0801	40	28	25	12.5	15.5	18	28	21	22	6	M8	14	27
●	H76740.TM1001	40	28	25	12.5	15.5	18	28	21	22	6	M10	14	28
●	H76740.TM1201	40	28	25	12.5	15.5	18	28	21	22	6	M12	12	29

H757



KNURLED SOLID HANDWHEEL WITH FEMALE THREADED INSERT

Materials:

Reinforced polyamide.
Resistant to oils and greases.

Surface finish:

Satin.

Colour:

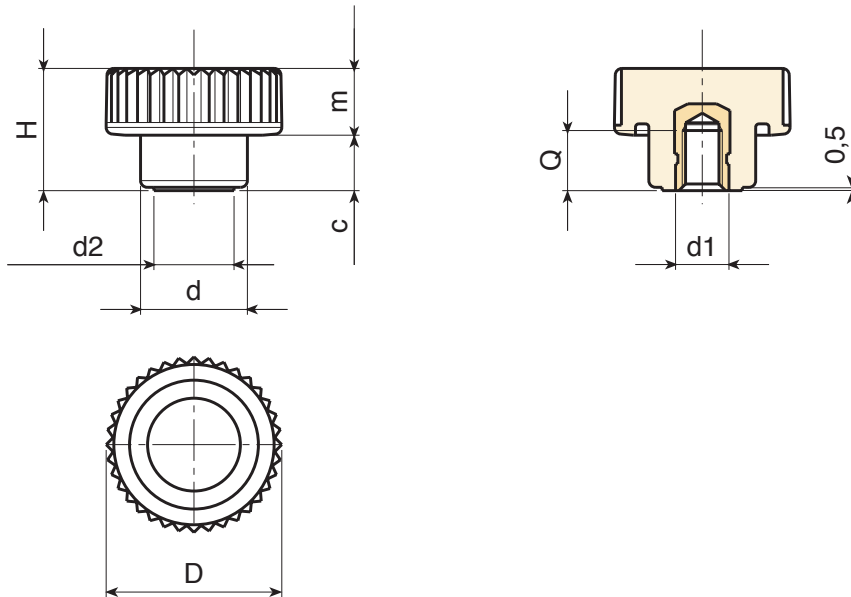
Black (RAL 9011).

Inserts:

Brass insert with female threaded hole (thread tolerance 6H).

Special Requests:

- Upon request and for special quantities inserts can be supplied in different materials.
- Upon request and for special quantities available in the colours indicated in the chart [page 807].



	art.	D	H	d	m	c	d2	d1 _{6H}	Q	g
●	H75726.TM0501	26	18	16	8.5	9.5	12	M5	6	9
●	H75726.TM0601	26	18	16	8.5	9.5	12	M6	9	10
●	H75726.TM0801	26	18	16	8.5	9.5	12	M8	8	11

H753



KNURLED SOLID HANDWHEEL WITH THREADED STUD

Materials:

Reinforced polyamide.
Resistant to oils and greases.

Surface finish:

Satin.

Colour:

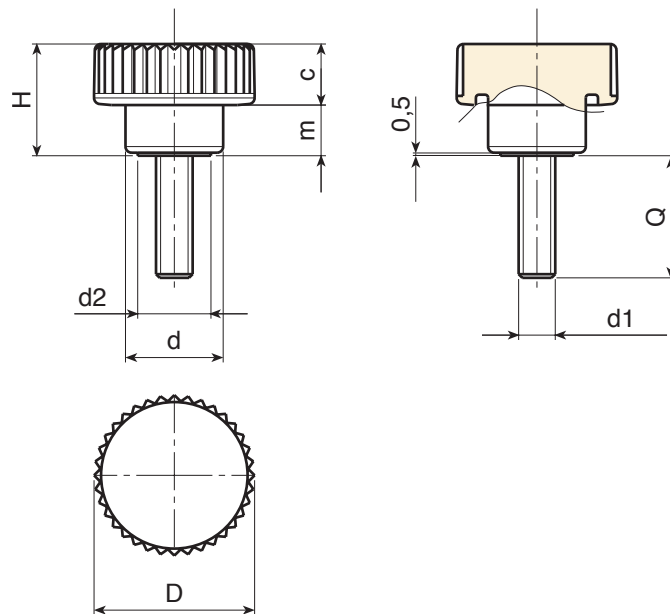
Black (RAL 9011).

Inserts:

Galvanised steel threaded stud (thread tolerance 6g).

Special Requests:

- Upon request and for special quantities inserts can be supplied with customised lengths.
- Upon request and for special quantities inserts can be supplied in different materials.
- Upon request and for special quantities available in the colours indicated in the chart [page 807].



🛒	art.	D	H	d	m	c	d2	LM	d16g	Q	📦
-	H75326.TM05X..01	26	18	16	8.5	9.5	12	50	M5	A.R.	-
-	H75326.TM06X..01	26	18	16	8.5	9.5	12	50	M6	20-25	13-14
-	H75326.TM08X..01	26	18	16	8.5	9.5	12	50	M8	20-30	20-22

Enter the selected stud length in place of the two dots . . in the item code.
A.R. = Customised stud length only available for a minimum of 250 pieces.
LM = maximum mouldable length.



Stock availability as % (🛒)
90% (●) - 40% (●) - 5% (●)

H758



KNURLED HANDWHEEL WITH HUB AND FEMALE THREADED INSERT

Materials:

Reinforced polyamide.
Resistant to oils and greases.

Surface finish:

Satin.

Colour:

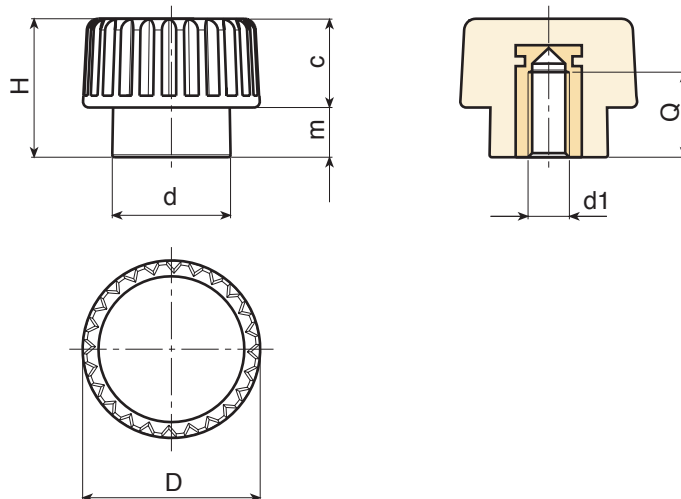
Black (RAL 9011).

Inserts:

Brass insert with female threaded hole (thread tolerance 6H).

Special Requests:

- Upon request and for special quantities inserts can be supplied in different materials.
- Upon request and for special quantities available in the colours indicated in the chart [page 807].



art.	D	H	d	m	c	d1 _{6H}	Q	g
H75815.TM0401	15	12	10	4.5	7.5	M4	7	4
H75815.TM0501	15	12	10	4.5	7.5	M5	7	4
H75815.TM0601	15	12	10	4.5	7.5	M6	7	4

H759

KNURLED HANDWHEEL WITH HUB AND THREADED STUD



Materials:

Reinforced polyamide.
Resistant to oils and greases.

Surface finish:

Satin.

Colour:

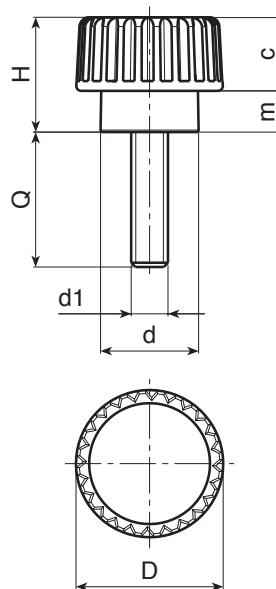
Black (RAL 9011).

Inserts:

Galvanised steel threaded stud (thread tolerance 6g).

Special Requests:

- Upon request and for special quantities inserts can be supplied with customised lengths.
- Upon request and for special quantities inserts can be supplied in different materials.
- Upon request and for special quantities available in the colours indicated in the chart [page 807].



🛒	art.	D	H	d	m	c	LM	d16g	Q	🛒
-	H75915.TM03X..01	15	12	10	4.5	7.5	70	M3	11-24	3-3,5
-	H75915.TM04X..01	15	12	10	4.5	7.5	70	M4	10-20-30	3,5-4-4,5
-	H75915.TM05X..01	15	12	10	4.5	7.5	70	M5	10-16-20-30	4-4,5-5,5-6,5
-	H75915.TM06X..01	15	12	10	4.5	7.5	70	M6	10-16-20	5-6-7,5

Enter the selected stud length in place of the two dots . . in the item code. Customised stud length available for a minimum of 250 pieces.

LM = maximum mouldable length.



Stock availability as % (🛒)
90% (●) - 40% (●) - 5% (●)

H760

KNURLED HANDWHEEL WITH THREADED STUD



Materials:

Reinforced polyamide.
Resistant to oils and greases.

Surface finish:

Satin.

Colour:

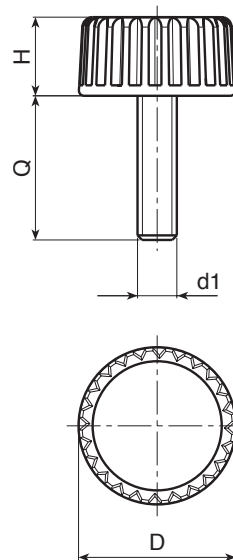
Black (RAL 9011).

Inserts:

Galvanised steel threaded stud (thread tolerance 6g).

Special Requests:

- Upon request and for special quantities inserts can be supplied with customised lengths.
- Upon request and for special quantities inserts can be supplied in different materials.
- Upon request and for special quantities available in the colours indicated in the chart [page 807].



	art.	D	H	LM	d16g	Q	g
-	H76015.TM04X..01	15	8	77	M4	13-15-19-24	2-2-2,5-3
-	H76015.TM05X..01	15	8	77	M5	15-19-24-29	4-4,5-5-5,5
-	H76015.TM06X..01	15	8	77	M6	15-19-24-29	5,5-6,5-7-7,5

Enter the selected stud length in place of the two dots . . in the item code. Customised stud length available for a minimum of 250 pieces.

LM = maximum mouldable length.



H770

KNURLED KNOB WITH FEMALE THREADED INSERT



Materials:

Reinforced polyamide.
Resistant to oils and greases.

Surface finish:

Satin.

Colour:

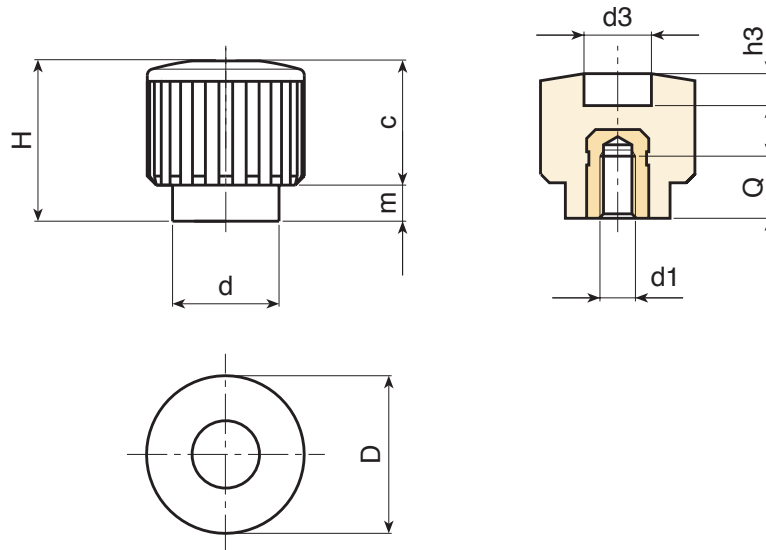
Black (RAL 9011).

Inserts:

Brass insert with female threaded hole (thread tolerance 6H).

Special Requests:

- Upon request and for special quantities inserts can be supplied in different materials.
- Upon request and for special quantities available in the colours indicated in the chart [page 807].



	art.	D	H	d	m	c	d3	h3	d1 _{6H}	Q	
●	H77018.TM0401	17.5	17.5	12	4	13.5	9	5	M4	7	5
●	H77018.TM0501	17.5	17.5	12	4	13.5	9	5	M5	7	5
●	H77018.TM0601	17.5	17.5	12	4	13.5	9	5	M6	7	5

H771

KNURLED KNOB WITH THREADED STUD



Materials:

Reinforced polyamide.
Resistant to oils and greases.

Surface finish:

Satin.

Colour:

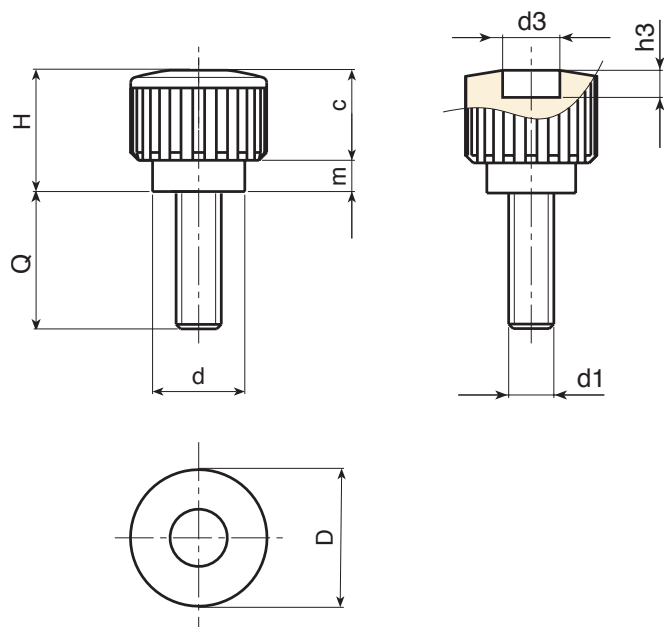
Black (RAL 9011).

Inserts:

Galvanised steel threaded stud (thread tolerance 6g).

Special Requests:

- Upon request and for special quantities inserts can be supplied with customised lengths.
- Upon request and for special quantities inserts can be supplied in different materials.
- Upon request and for special quantities available in the colours indicated in the chart [page 807].



	art.	D	H	d	m	c	d3	h3	LM	d16g	Q	g
-	H77118.TM04X..01	17.5	17.5	12	4	13.5	9	5	50	M4	10-16-30	6-6,5-8
-	H77118.TM05X..01	17.5	17.5	12	4	13.5	9	5	60	M5	10-16-20	6,5-7-8
-	H77118.TM06X..01	17.5	17.5	12	4	13.5	9	5	60	M6	16-20	8,5-9

Enter the selected stud length in place of the two dots . . in the item code. Customised stud length available for a minimum of 250 pieces.
LM = maximum mouldable length.



H772

KNURLED KNOB WITH THREADED THROUGH-HOLE INSERT



Materials:

Reinforced polyamide.
Resistant to oils and greases.

Surface finish:

Satin.

Colour:

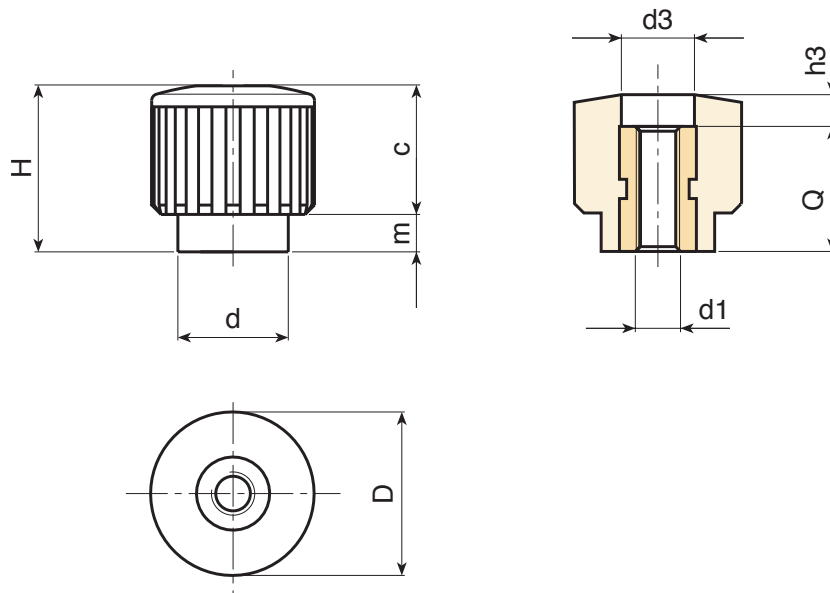
Black (RAL 9011).

Inserts:

Brass insert with threaded through hole (thread tolerance 6H).

Special Requests:

- Upon request and for special quantities inserts can be supplied in different materials.
- Upon request and for special quantities available in the colours indicated in the chart [page 807].



🛒	art.	D	H	d	m	c	d3	h3	d1 _{6H}	Q	g
●	H77218.TM0401	17.5	17.5	12	4	13.5	9	4.5	M4	13	5.5
●	H77218.TM0501	17.5	17.5	12	4	13.5	9	4.5	M5	13	5.5
●	H77218.TM0601	17.5	17.5	12	4	13.5	9	4.5	M6	13	5.5

H773

+135°
-30°

PA6
+G.F.

UL94
HB

RoHS
COMPLIANT

KNURLED KNOB WITH SLOT END AND FEMALE THREADED INSERT

Materials:

Reinforced polyamide.
Resistant to oils and greases.

Surface finish:

Satin.

Colour:

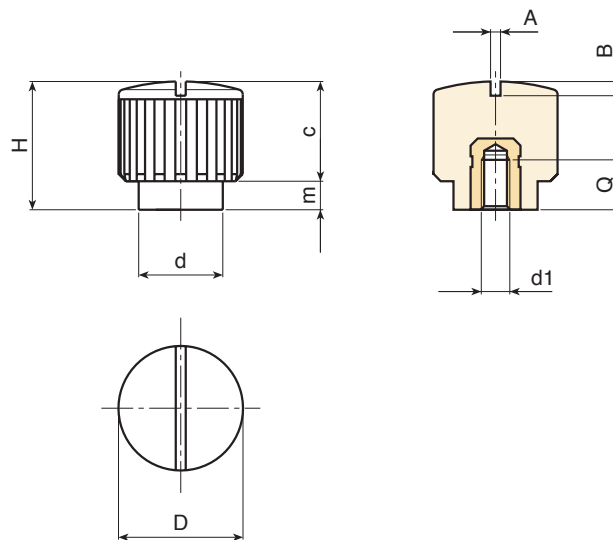
Black (RAL 9011).

Inserts:

Brass insert with female threaded hole (thread tolerance 6H).

Special Requests:

- Upon request and for special quantities inserts can be supplied in different materials.
- Upon request and for special quantities available in the colours indicated in the chart [page 807].



	art.	D	H	d	m	c	A	B	d1 _{6H}	Q	g
●	H77318.TM0401	17.5	18	12	4	14	1.2	1.5	M4	7	6.5
●	H77318.TM0501	17.5	18	12	4	14	1.2	1.5	M5	7	7
●	H77318.TM0601	17.5	18	12	4	14	1.2	1.5	M6	7	7

H774



KNURLED KNOB WITH SLOT END AND THREADED STUD

Materials:

Reinforced polyamide.
Resistant to oils and greases.

Surface finish:

Satin.

Colour:

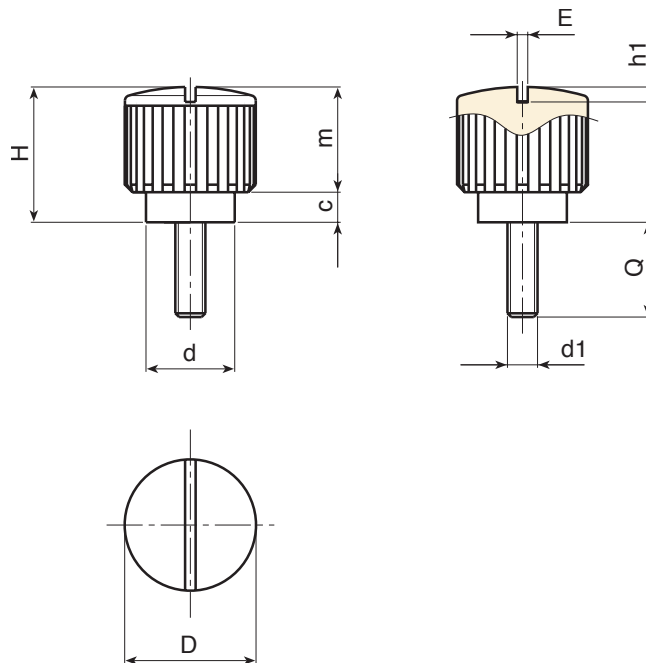
Black (RAL 9011).

Inserts:

Galvanised steel threaded stud (thread tolerance 6g).

Special Requests:

- Upon request and for special quantities inserts can be supplied with customised lengths.
- Upon request and for special quantities inserts can be supplied in different materials.
- Upon request and for special quantities available in the colours indicated in the chart [page 807].



	art.	D	H	d	m	c	A	B	LM	d16g	Q	g
●	H77418.TM04X3001	17.5	18	12	4	14	1.2	1.5	50	M4	30	7.5
●	H77418.TM05X..01	17.5	18	12	4	14	1.2	1.5	60	M5	A.R.	-
●	H77418.TM06X..01	17.5	18	12	4	14	1.2	1.5	60	M6	A.R.	-

Enter the selected stud length in place of the two dots . . in the item code.
A.R. = Customised stud length only available for a minimum of 250 pieces.
LM = maximum mouldable length.



Stock availability as % (🛒)
90% (●) - 40% (●) - 5% (●)

H172

KNURLED KNOB WITH SLOT END AND THREADED STUD



Materials:

Reinforced polyamide.
Resistant to oils and greases.

Surface finish:

Satin.

Colour:

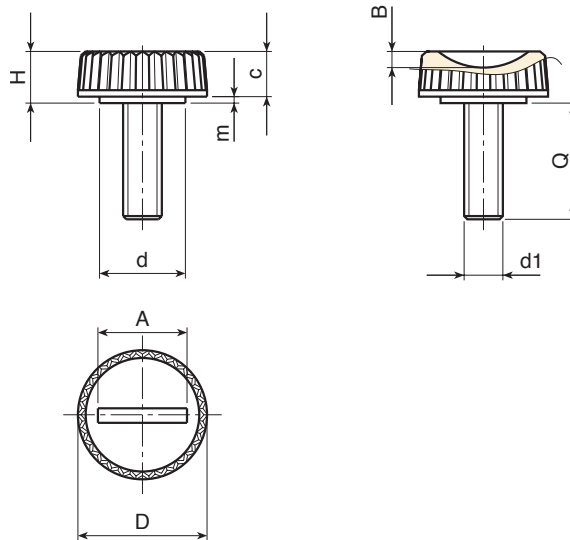
Black (RAL 9011).

Inserts:

Galvanised steel threaded stud (thread tolerance 6g).

Special Requests:

- Upon request and for special quantities inserts can be supplied with customised lengths.
- Upon request and for special quantities inserts can be supplied in different materials.
- Upon request and for special quantities available in the colours indicated in the chart [page 807].



art.	D	H	d	m	c	A	B	LM	d16g	Q
H17220.TM06X..01	20	8	13.5	1	7	14	2.5	39	M6	A.R.

Enter the selected stud length in place of the two dots .. in the item code. Customised stud length only available for a minimum of 500 pieces.

A.R. = Upon request.

LM = maximum mouldable length.



H171

KNURLED HANDWHEEL WITH SHORT HUB



Materials:

Reinforced polyamide.
Resistant to oils and greases.

Surface finish:

Satin.

Colour:

Black (RAL 9011).

Inserts:

H171:

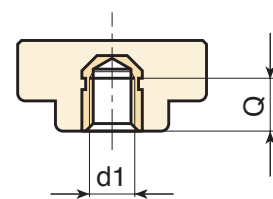
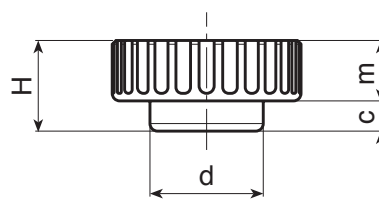
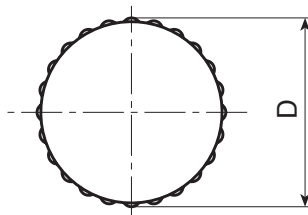
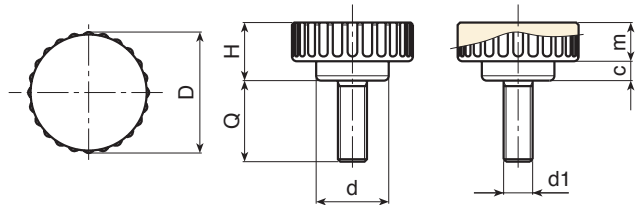
Galvanised steel threaded stud (thread tolerance 6g).

H171CON:

Brass insert with female threaded hole (thread tolerance 6H).

Special requests:

- Upon request and for special quantities inserts with stud can be supplied with customised lengths for a minimum quantity of 100 pieces.



Version H171CON: With brass insert.

🛒	art.	D	H	d	m	c	d1 _{6H}	🔒
●	H17125.TM0601CON	25	12	15.5	4	8	M6	7
●	H17125.TM0801CON	25	12	15.5	4	8	M6	8

Version H171: With galvanised steel stud.

🛒	art.	D	H	d	m	c	LM	d1 _{6g}	Q	🔒
-	H17125.TM06X2001	25	12	15.5	4	8	40	M6	20	11
-	H17125.TM08X2001	25	12	15.5	4	8	40	M8	20	15

LM = maximum mouldable length.

Customised stud length available for a minimum of 250 pieces.



Stock availability as % (🛒)
90% (●) - 40% (●) - 5% (●)



HIGHLY CUSTOMIZABLE

SOLUTIONS TO MEET CUSTOMERS'
REQUIREMENTS.



BOTELO[®]