



BOTECO®

YOUR MECHANICAL COMPONENT

GROUP - J

LOCKING AND LATCHING SYSTEMS





LATCHES
CLOSE
THE HI



BOTECA®

J305

PLASTIC CAM FOR SIMPLE LATCHING



Materials:

Reinforced polyamide.
Resistant to oils and greases.

Surface finish:

Satin.

Colour:

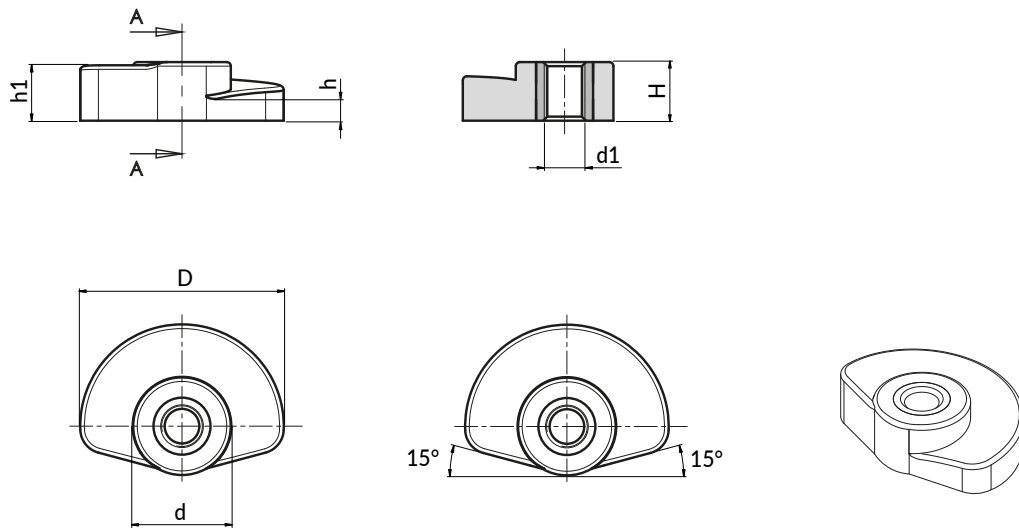
Black (RAL 9011).

Inserts:

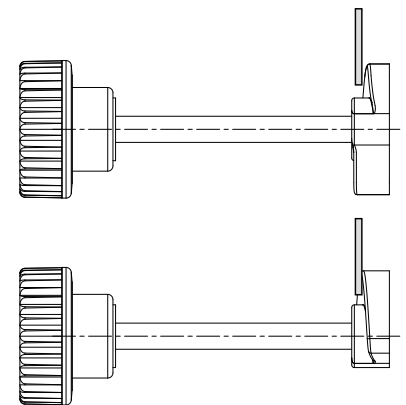
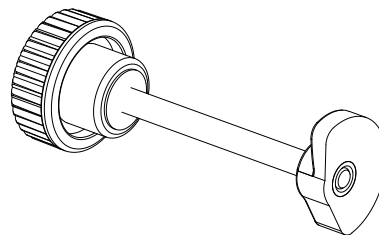
Brass insert with threaded through hole (thread tolerance 6H).

Special Requests:

- None.



This cam can be used in combination with any handwheel with stud. In this way, as illustrated in the sketch to the side, the assembly becomes a simple latch for securing doors. Turning the handwheel also rotates the cam, which, being a spiral shape, varies the grip thickness to latch onto the door.



art.	D	d	H	h	h1	d1 _{6H}	
J30525.TM0501	25	12	7,2	3	6,8	M5	3

J130

UNIVERSAL LOCK WITH KNOB



Materials:

- (1) Die-cast zamak lock body M19 (stator), rotor and knob.
- (2) Elastic washer d. 24x1 with bore d. 19.4.
- (3) Galvanised steel hexagon lock nut M19x1.
- (4) Galvanised steel locking lever. (Qn design N flat - Qe design E bent outwards).
- (5) Conical steel elastic washer d. 12x1.5.
- (6) Galvanised steel Phillips dome head screw M5x8.

Surface finish:

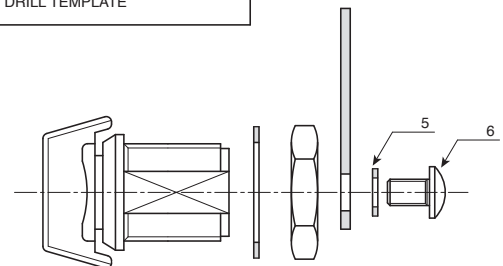
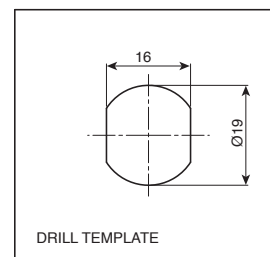
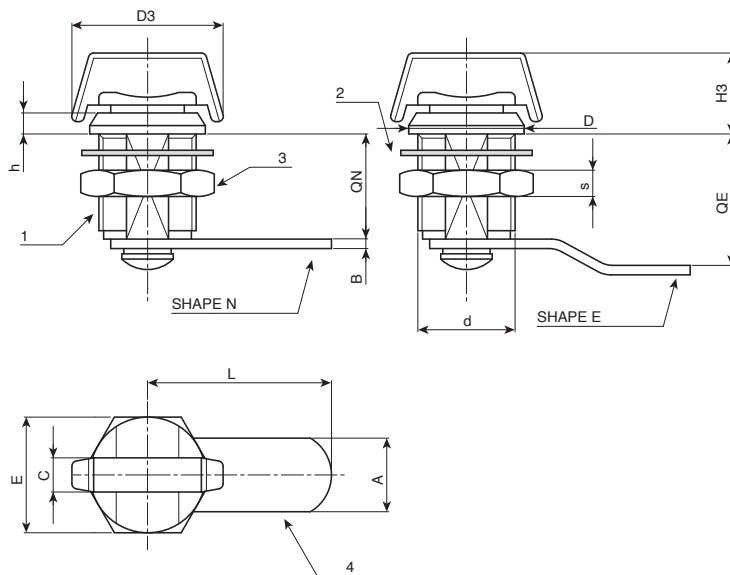
- (1) Nickel-plated.
- (2-5) Black oxide treated.
- (3-4-6) Standard blue galvanising.

Rotation:

90°.

Special Requests:

- None.



Art.	d	L	Qn	Qe	D	D3	H3	h	A	B	C	E	S	g
J130019.ZN30X20	M19	30	20	-	22	29	15	4	14	2.5	6.5	22	5	57
J130019.ZE30X25	M19	30	-	25	22	29	15	4	14	2.5	6.5	22	5	60

J142

UNIVERSAL LOCK FOR 3 MM WINGED TUBE KEY



Materials:

- (1) Die-cast zamak lock body M19 (stator) and rotor. 3 mm winged tubular key.
- (2) Elastic washer d. 24x1 with bore d. 19.4.
- (3) Steel hexagon lock nut M19x1.
- (4) Steel locking lever. (Qn design N flat - Qe design E bent outwards).
- (5) Conical steel elastic washer d. 12x1.5.
- (6) Steel Phillips dome head screw M5x8.

Surface finish:

- (1) Nickel-plated.
- (2-5) Black oxide treated.
- (3-4-6) Standard blue galvanising.

Key (optional):

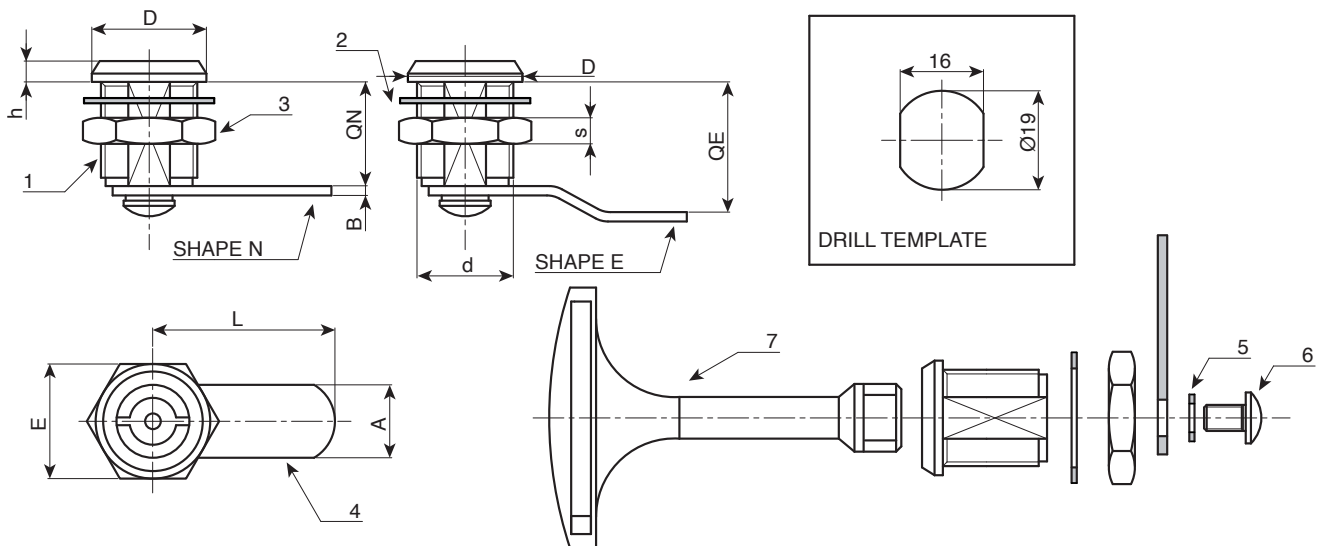
- (7) Nickel-plated die-cast zamak key Art. J143080.Z03
- ATTENTION: The key is not supplied. To be ordered separately.

Rotation:

90°.

Special Requests:

- None.



Art.	d	L	Qn	Qe	D	h	A	B	E	S	
J142019.ZN0335X20	M19	35	20	-	22	4	14	2.5	22	5	48
J142019.ZE0335X22	M19	35	-	22	22	4	14	2.5	22	5	49
J142019.ZE0330X25	M19	30	-	25	22	4	14	2.5	22	5	47
J142019.ZE0339X29	M19	39	-	29	22	4	14	2.5	22	5	49
J142019.ZE0335X37	M19	35	-	37	22	4	14	2.5	22	5	51

J144

UNIVERSAL LOCK FOR 7 MM SQUARE INSERT KEY



Materials:

- (1) Die-cast zamak lock body M19 (stator) and rotor. 7 mm square insert key.
- (2) Elastic washer d. 24x1 with bore d. 19.4.
- (3) Steel hexagon lock nut M19x1.
- (4) Steel locking lever. (Qn design N flat - Qe design E bent outwards).
- (5) Conical steel elastic washer d. 12x1.5.
- (6) Steel Phillips dome head screw M5x8.

Surface finish:

- (1) Nickel-plated.
- (2-5) Black oxide treated.
- (3-4-6) Standard blue galvanising.

Key (optional):

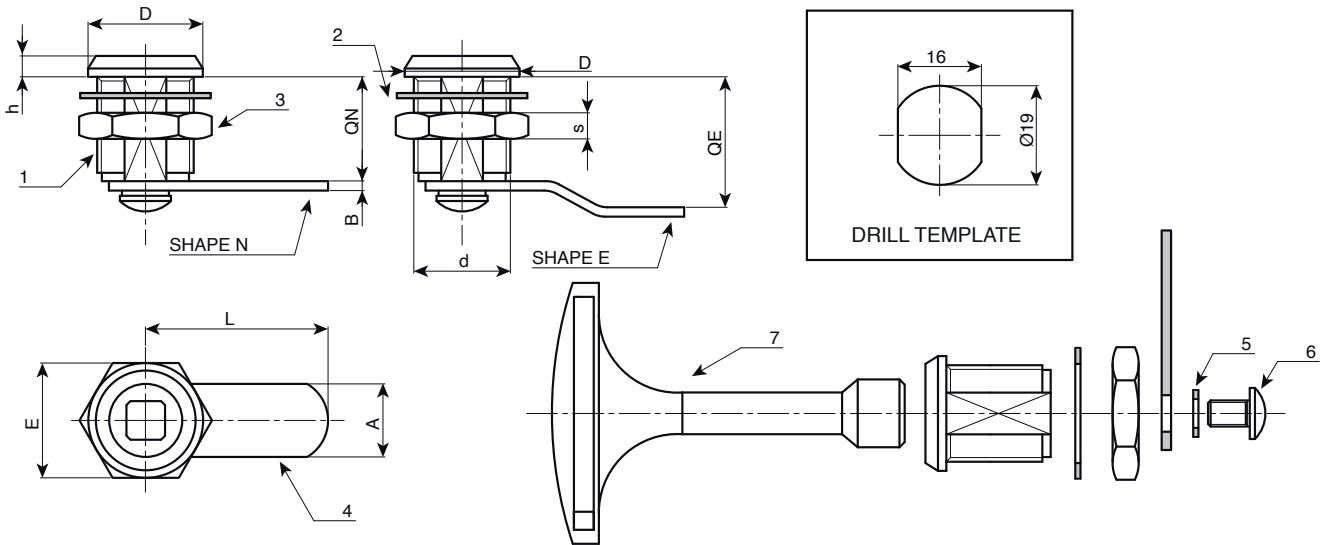
- (7) Nickel-plated die-cast zamak key. Art. J145080.Z07
- ATTENTION: The key is not supplied. To be ordered separately.

Rotation:

90°.

Special Requests:

- None.



Art.	d	L	Qn	Qe	D	h	A	B	E	S	g
J144019.ZN0735X20	M19	35	20	-	22	4	14	2.5	22	5	48
J144019.ZE0735X22	M19	35	-	22	22	4	14	2.5	22	5	49
J144019.ZE0730X25	M19	30	-	25	22	4	14	2.5	22	5	47
J144019.ZE0739X29	M19	39	-	29	22	4	14	2.5	22	5	49
J144019.ZE0735X37	M19	35	-	37	22	4	14	2.5	22	5	51

J180

ADJUSTABLE STEEL TOGGLE LATCH



Materials:

J180:

Adjustable toggle latch made of sheared galvanised steel.

J180CIN:

Adjustable toggle latch made of sheared stainless steel (Aisi 304).

Surface finish:

Glossy.

Colour:

J180:

Standard blue galvanising.

J180CIN:

Natural.

ATTENTION:

The catch plate must be ordered separately from the toggle latch.

Special Requests:

- None.

COMBINABLE CATCH PLATES:

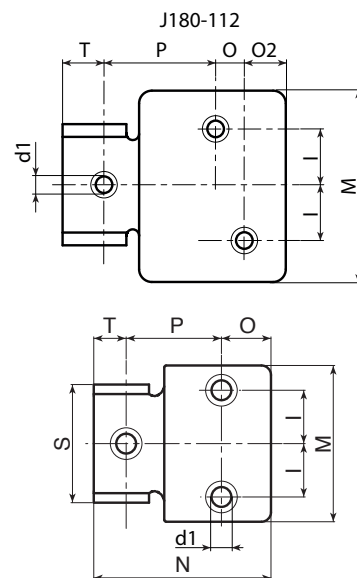
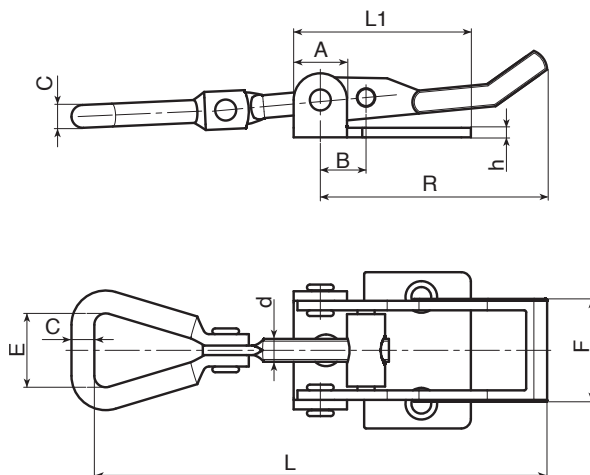
Article J180048 combinable with catch plates: J183048-J184048

Article J180065 combinable with catch plates: J183065-

J184065-J185065

Article J180112 combinable with catch plates: J183065-

J184065-J185065



Version J180: Galvanised steel version.

art.	R	L	L1/N	A	B	C	d	d1	E	F	h	I	M	O	O2	P	T	S	g
J180048.FZ	48	66-75	35	10	11	4.3	M5	5.5	18	17	2	7.5	28	9	-	12	14	20	35
J180065.FZ	65	104-124	46	14	12	6	M6	5.1	24	25	3	13	41	13.5	-	24.5	8	31	110
J180112.FZ	112	160-175	70	20	14	7	M8	7.5	34	30	2.5	17.5	60	9	13	35	13	37	210

Version J180CIN: Stainless steel version (Aisi 304).

art.	R	L	L1/N	A	B	C	d	d1	E	F	h	I	M	O	O2	P	T	S	g
J180048.FZCIN	48	66-75	35	10	11	4.3	M5	5.5	18	17	2	7.5	28	9	-	12	14	20	35
J180065.FZCIN	65	104-124	46	14	12	6	M6	5.1	24	25	3	13	41	13.5	-	24.5	8	31	110

INOX



J183



STEEL CATCH PLATE FOR ADJUSTABLE TOGGLE LATCH

Materials:

J183:

Drilled and sheared catch plate made of steel.

J183CIN:

Drilled and sheared catch plate made of stainless steel (Aisi 304).

Surface finish:

Glossy.

Colour:

J183:

Standard blue galvanising.

J183CIN:

Natural.

ATTENTION:

The toggle latch must be ordered separately from the catch plate.

Special Requests:

- None.

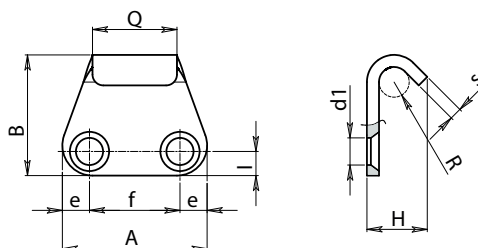
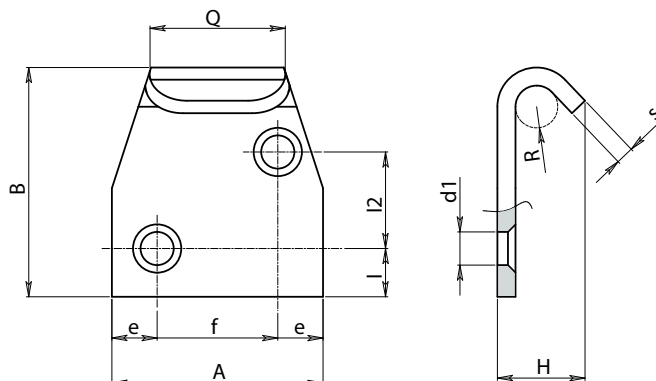
COMBINABLE CATCH PLATES:

Catch plate J183048 combinable with toggle latches:

J180048-J182048.

Catch plate J183065 combinable with toggle latches: J180065-

J182065-J180112-J182112.



Version J183 - galvanised steel

Art.	H	I	I2	A	B	Q	e	f	R	d1	s	g
J183048.FZ10	10	5	-	26	20	14	5.5	15	2.5	5.1	2	7
J183065.FZ14	13.5	8.5	16	35	39	22	7.5	20	3.5	5.5	2	31

Version J183CIN - stainless steel

Art.	H	I	I2	A	B	Q	e	f	R	d1	s	g
J183048.FZ10CIN	10	5	-	26	20	14	5.5	15	2.5	5.1	2	7
J183065.FZ14CIN	13.5	8.5	16	35	39	22	7.5	20	3.5	5.5	2	31

INOX

J184



C10



STEEL CATCH PLATE FOR ADJUSTABLE TOGGLE LATCH

Materials:

Drilled and sheared catch plate made of steel.

Surface finish:

Glossy.

Colour:

Standard blue galvanising.

ATTENTION:

The toggle latch must be ordered separately from the catch plate.

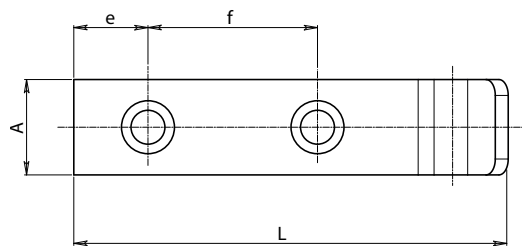
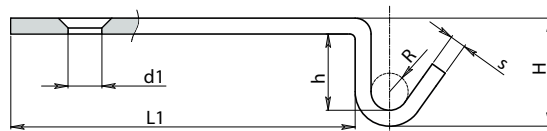
Special Requests:

- None.

COMBINABLE CATCH PLATES:

Catch plate J184048 combinable with toggle latches: J180048-J182048.

Catch plate J184065 combinable with toggle latches: J180065-J182065-J180112-J182112.



Art.	H	L	L1	h	A	e	f	R	d1	s	
J184048.FZ09	9	40	29	5	16	7	14	2.5	5.1	2	7
J184065.FZ21	21	82	65	16	18	14	32	3.5	6.5	3	31

J185

STEEL CATCH PLATE FOR ADJUSTABLE TOGGLE LATCH



Materials:

J185:

Extended drilled catch plate made of sheared steel.

J185CIN:

Extended drilled catch plate made of sheared stainless steel (Aisi 304).

Surface finish:

Glossy.

Colour:

J185:

Standard blue galvanising.

J185CIN:

Natural.

ATTENTION:

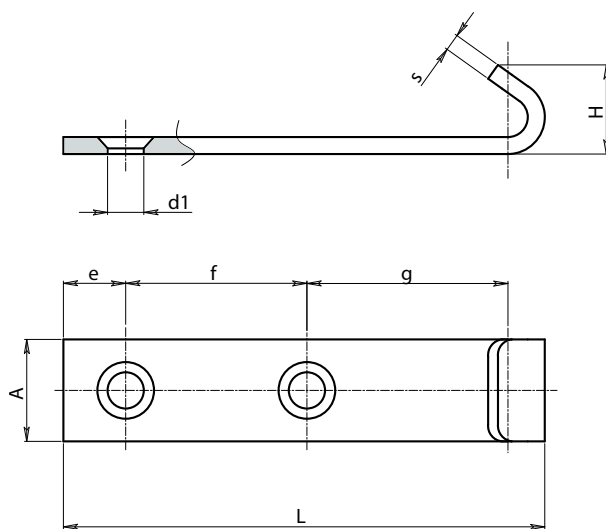
The toggle latch must be ordered separately from the catch plate.

Special Requests:

- None.

COMBINABLE CATCH PLATES:

Catch plate J185065 combinable with toggle latches: J180065-J182065-J180112-J182112.



Version J185 - galvanised steel

Art.	H	L	A	e	f	d1	s	
J185065.FZ16	16.5	85	18	13.5	29	7	3	40

Version J185CIN - stainless steel

Art.	H	L	A	e	f	d1	s	
J185065.FZ16CIN	16.5	85	18	13.5	29	7	3	40

INOX

J300

LOCKING BRACKET WITH THROUGH HOLE



Materials:

Reinforced polyamide.
Resistant to oils and greases.

Surface finish:

Satin.

Colour:

Black (RAL 9011).

Hole

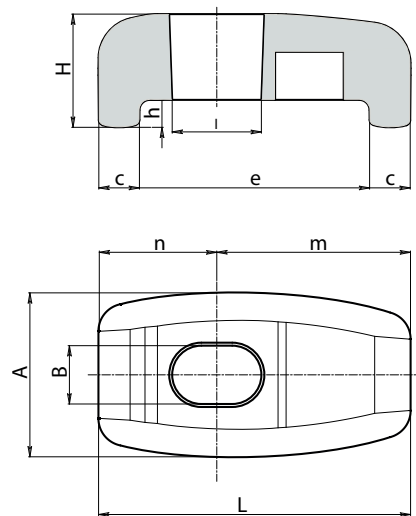
Smooth through hole obtained by moulding the plastic.

Special Requests:

- None.



The use of the J300 bracket must be combined with a knob with a threaded stud. An effective combination could be the one with T-handle art. L271. Used together they function as a quick locking and release system for panels of machinery in general. Particularly suitable for insulating panels of large external air conditioning chiller units.



Art.	A	L	H	B	I	c	e	h	n	m	g
J30046.TG08.501	24	45.5	16.5	8.5	13	6	33.5	4	17	28.5	15
J30068.TG08.501	24	67.5	16.5	8.5	13	6	55.5	4	17.5	50	19

J188

LIGHT DUTY TOGGLE LATCH



Materials:

- (1) Sheared and bent steel body.
- (2) Sheared and bent steel catch plate.
- (3) Moulded and threaded steel hook.
- (4) Stainless steel fixing rivets (Aisi 304).

Surface finish:

Smooth.

Colour:

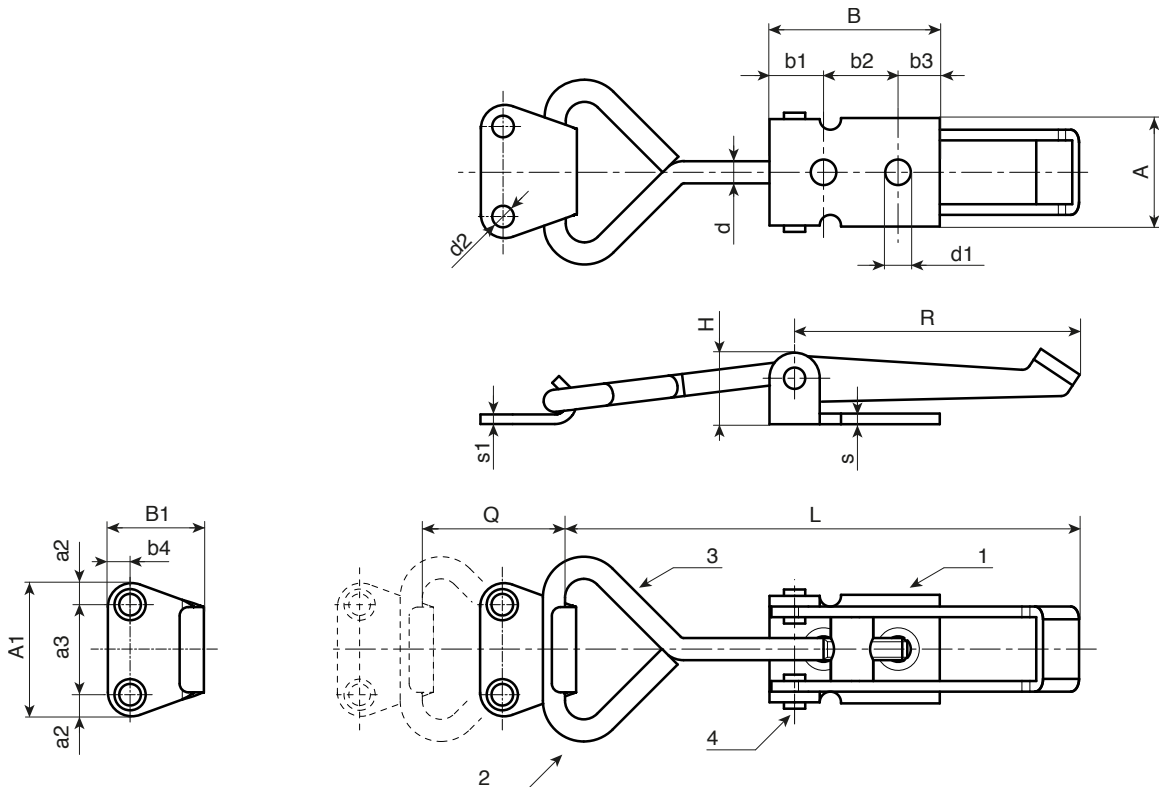
Natural.

Packaging:

The article comes complete with the corresponding standard catch plate.

Special Requests:

- Upon request and for special quantities the article can be supplied in stainless steel.



art.	R	L	Q	H	A	B	A1	B1	b1	b2	b3	b4	a2	a3	s	s1	d	d1	d2	g
J188040.FZ	40	75	0÷15	15	20.5	29.5	25	22	5.5	18	6	4.5	5.5	14	2	2	4	4.7	4.5	56
J188060.FZ	60	98	0÷25	17	25.5	40	30	24	13	17.5	9.5	6	6.5	17	2.5	3	5	6	4.5	83

J190

REVERSE TOGGLE LATCH



C10



Materials:

- (1) Sheared and bent steel body.
- (2) Sheared and bent steel catch plate.
- (3) Moulded and threaded steel hook.
- (4) Stainless steel fixing rivets (Aisi 304).

Surface finish:

Smooth.

Colour:

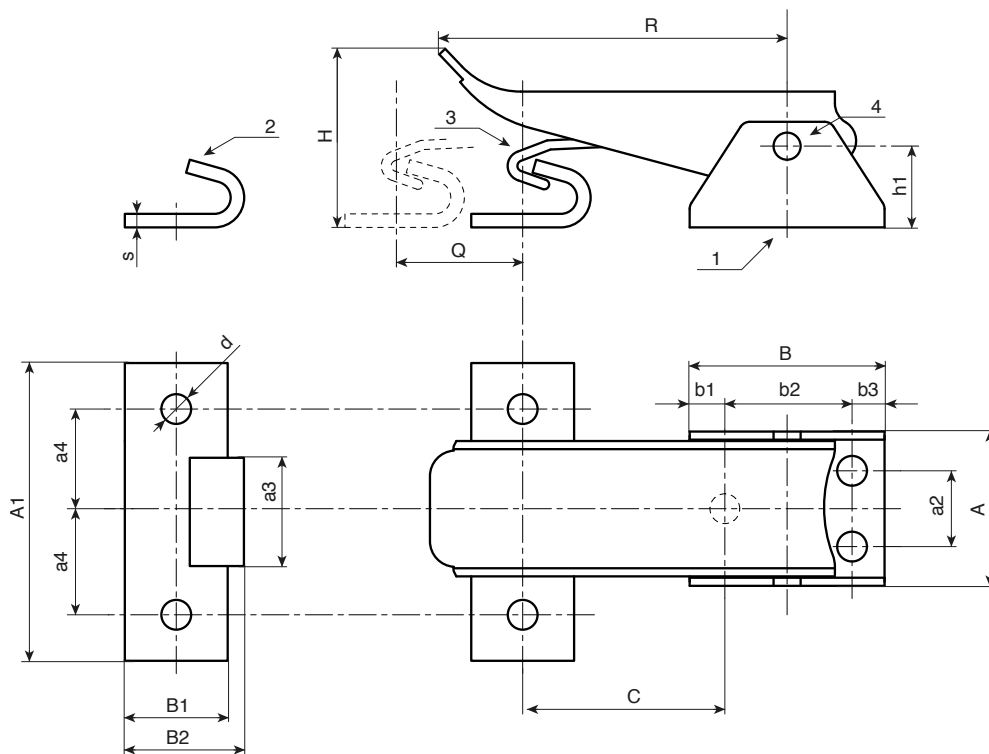
Natural.

Packaging:

The article comes complete with the corresponding standard catch plate.

Special Requests:

- Upon request and for special quantities the article can be supplied in stainless steel.



art.	R	Q	H	C	h1	A	B	A1	B1	b1	b2	b3	a2	a3	a4	s	d	
J190036.FZ	66.5	8	30	35÷43	16	28.5	35	55	18	5.5	24	5.5	14	20	19	2.5	5.5	115

J250

J-HOOK TOGGLE LATCH WITH CATCH PLATE



Materials:

- (1) Technopolymer handle. Resistant to oils and greases.
- (2) Sheared and bent steel lever system.
- (3) Steel lock nut.
- (4) Stainless steel fixing rivets (Aisi 303).
- (5) Hardened steel hook.
- (6) Hardened and greased retainer bush.
- (7) Sheared and bent steel catch plate.

Surface finish:

- (1) Light satin.
- (2-3-5-6-7) Smooth.

Colour:

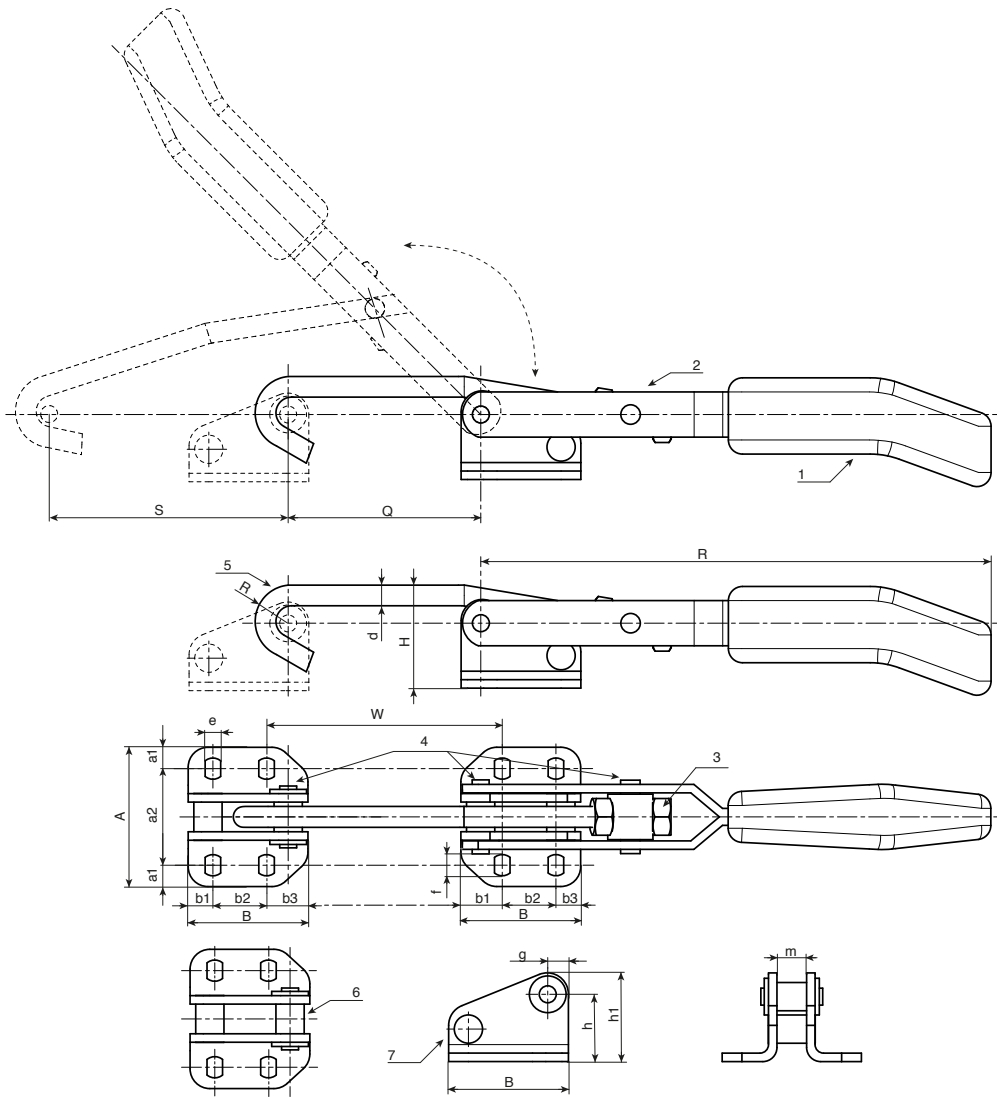
- (1) Two-tone (red and black).
- (2-3-5-6-7) Standard blue galvanising.

Packaging:

The article comes complete with the corresponding standard catch plate.

Special Requests:

- None.



art.	F1 (kN)	R	H	S	Q	R	d	W	A	a2	B	b1	b2	b3	e	f	g	h	h1	m	g
J250020.FZ	2	97	40	40	30÷38	97	6	32÷41	43	29	33	7	19	7	4.5	6.5	185	27.5	35	6.8	185
J250030.FZ	3	160	40	98	53÷63	160	6.5	71.5÷81	43	34	42	14.5	19	8.5	5.5	7.5	410	23	31	10.8	410
J250050.FZ	5	236	70	144	59÷70	236	11	61÷70	86	60	55	12.5	30	12.5	11	14.5	1260	49	60	13.8	1260

J255

NARROW J-HOOK TOGGLE LATCH WITH CATCH PLATE



Materials:

- (1) Technopolymer handle. Resistant to oils and greases.
- (2) Sheared and bent steel lever system.
- (3) Steel lock nut.
- (4) Stainless steel fixing rivets (Aisi 303).
- (5) Hardened steel hook.
- (6) Hardened and greased retainer bush.
- (7) Sheared and bent steel catch plate.

Surface finish:

- (1) Light satin.
- (2-3-5-6-7) Smooth.

Colour:

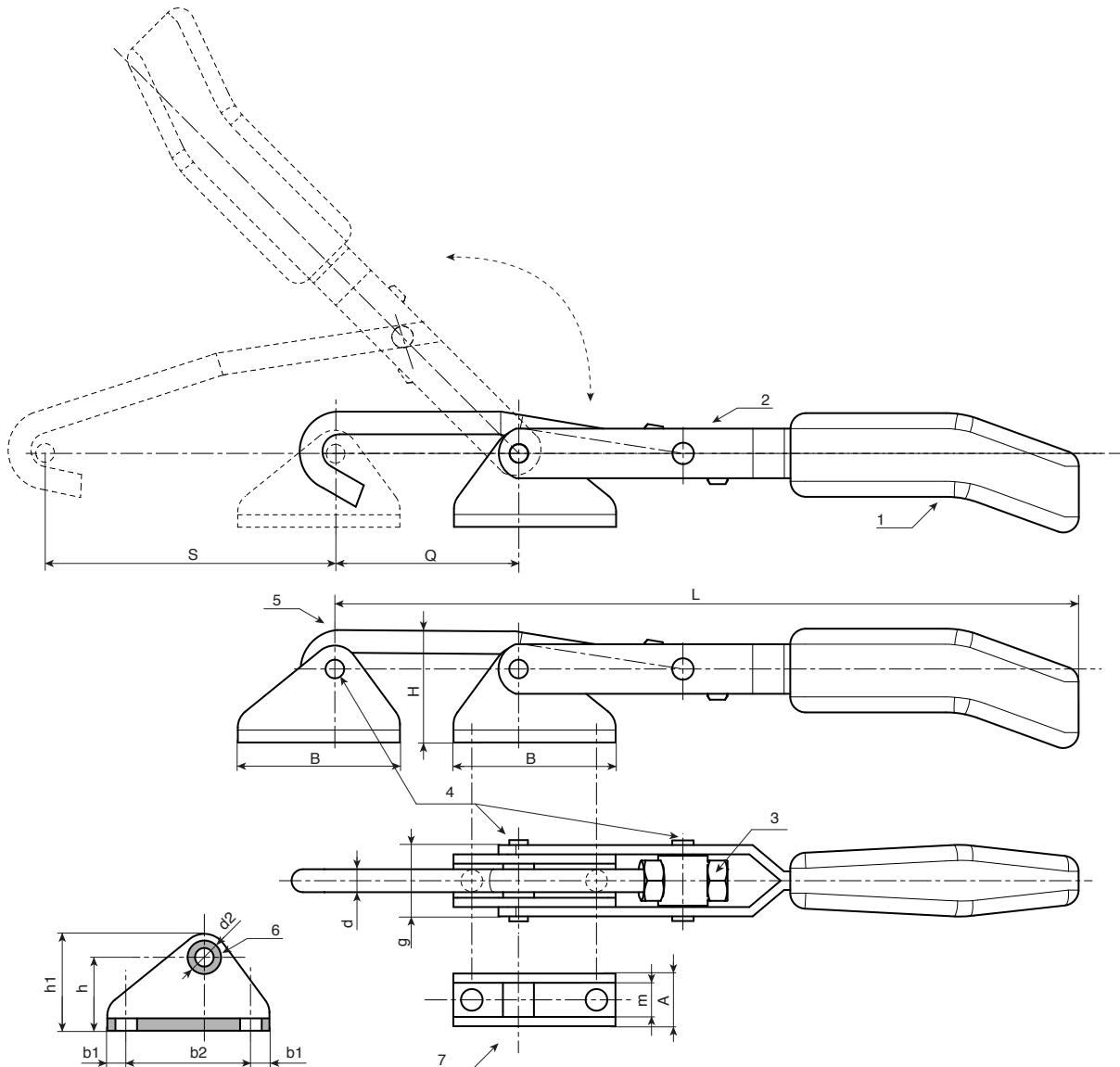
- Two-tone (red and black).
- (2-3-5-6-7) Standard blue galvanising.

Packaging:

The article comes complete with the corresponding standard catch plate.

Special Requests:

- None.



art.	F1 (kN)	L	H	S	Q	d	d2	A	B	b1	b2	g	h	h1	m	
J255030.FZ	3	235÷247	36	93÷105	12	7	7	17	52	7	38	23	23	31	11	23

J260

LEVER TOGGLE LATCH



Materials:

- (1) Technopolymer handle. Resistant to oils and greases.
- (3) Sheared and bent steel lever system.
- (4) Hardened steel U-shaped hook with threaded ends.
- (5) Steel lock nut.
- (6) Steel self-locking nut.
- (7) Sheared and bent catch plate made of hardened steel.
- (8) Hardened steel rotary retainer bush, greased.
- (9) Stainless steel fixing rivets (Aisi 303).

Surface finish:

- (1) Light satin.
- (3-4-5-6-7-8-9) Smooth.

Colour:

- (1) Two-tone (red and black).
- (3-4-5-6-7-8) Standard blue galvanising.
- (9) Natural.

Packaging:

The code includes the toggle latch and its catch plate. The catch plate can also be ordered separately with the following codes:

- J261010.FZ for toggle latch J260010.FZ
- J261014.FZ for toggle latch J260014.FZ
- J261025.FZ for toggle latch J260025.FZ
- J261045.FZ for toggle latch J260045.FZ

Special Requests:

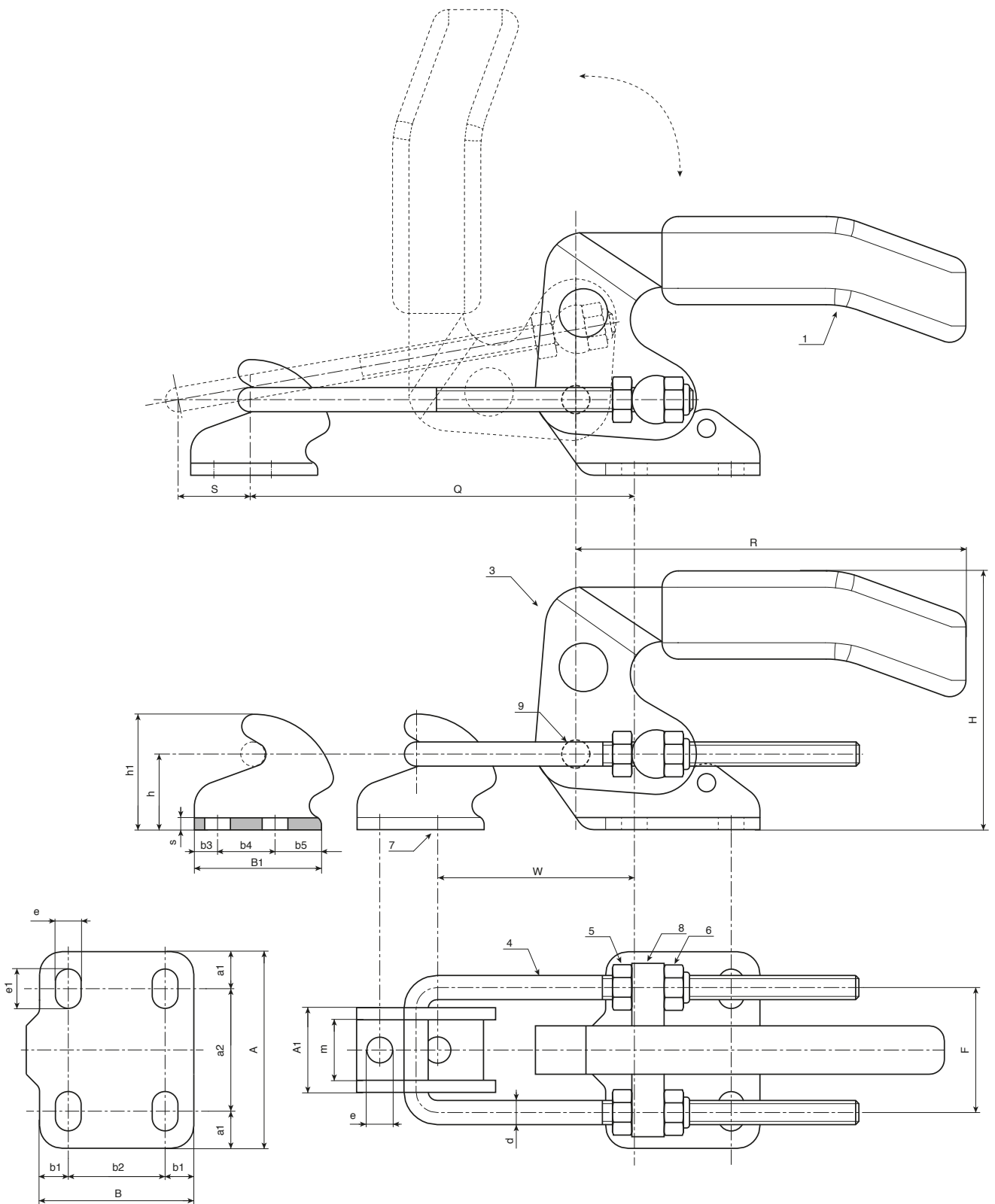
- Upon request and for special quantities the product can be supplied in stainless steel.



Art.	F1 (kN)	R	H	S	Q	W	d	F	A	A1	a1	a2
J260010.FZ	1	89	28	16	21÷65	14÷24	3.5	18.5	27	13.5	4.5	18
J260014.FZ	14	83	49	11	48÷86	32÷70	3.5	24	38	16	8	22
J260025.FZ	25	104	70	21	48,5÷95,5	43÷90	5	31	48	21	10	28
J260045.FZ	45	124	84	28	66÷104	60÷116	7	41	64	28	12	40

J260

LEVER TOGGLE LATCH



Art.	B	B1	b1	b2	b3	b4	b5	e	e1	h	h1	m	s	
J260010.FZ	26	20	5	16	5	10	5	4.5	4.5	12	18	9	2	80
J260014.FZ	26	26	6.25	13.5	7.75	10.5	7.75	5.2	7.5	12	20	11	2.5	150
J260025.FZ	35	32	8	19	6	14	12	6.5	10	19	29	15	3	330
J260045.FZ	51	40	9.5	32	8	19	13	8.5	13	25	39	20	4	750

J265

HEAVY DUTY LEVER TOGGLE LATCH



Materials:

- (1) Thin plastic handle. Resistant to oils and greases.
- (2) Cast steel lever system and base.
- (3) Cast steel catch plate.
- (4) Hardened steel U-shaped hook with threaded ends.
- (5-6) Galvanised steel lock nuts.
- (7) Galvanised, hardened steel pivot pin. With lubricated guide bearing. Fixed with snap rings.
- (8) Galvanised, hardened steel rotary retainer bush. With lubricated guide bearing. Fixed with snap rings.
- (9) Stainless steel fixing rivets (Aisi 303).

Surface finish:

- (1-4-5-6-7-8-9) Smooth.
- (2-3) Sandblasted satin finish.

Colour:

- (1) Red.
- (2-3-4-5-6-7-8) Standard blue galvanising.
- (9) Natural.

Packaging:

The code includes the toggle latch and its catch plate. The catch plate can also be ordered separately with the following codes:
J266150.FZ for toggle latch J265150.FZ

Special Requests:

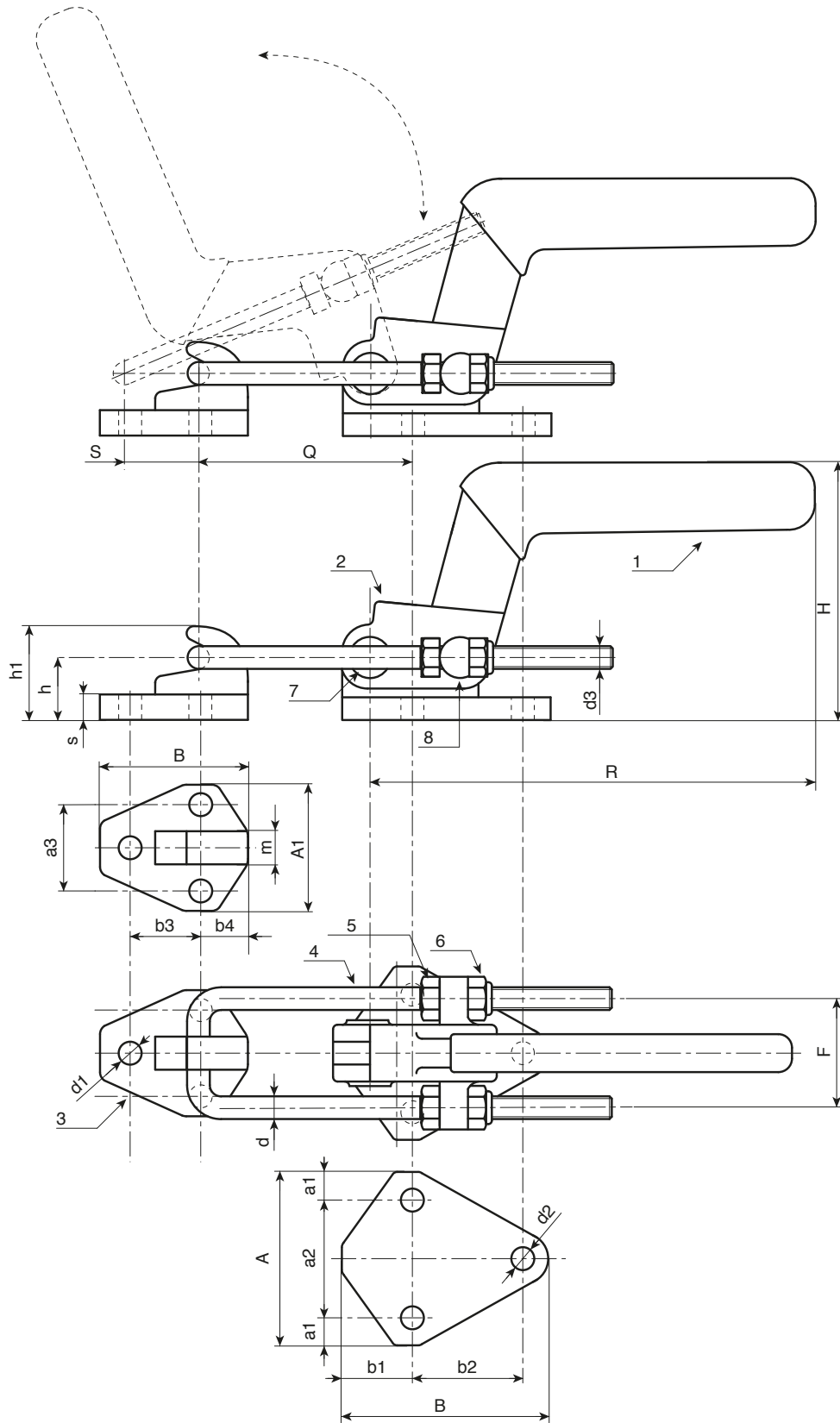
- None.



Art.	F1 (kN)	R	H	S	Q	F	A	A1	a1	a2	a3	B
J265150.FZ	15	168	94	50	81±132	54	82	60	13	56	42	98.5

J265

HEAVY DUTY LEVER TOGGLE LATCH



Art.	B1	d	d1	d2	d3	b1	b2	b3	b4	h	h1	m	s	
J265150.FZ	70	9	10.5	10.5	M10	33.5	52.5	35	23	33	50	15.5	11	1800

Stock availability as %
 90% - 40% - 5%

J270

NEW

+80°
-20°

TPV

DD13

UL94
HB

RoHS
COMPLIANT

SMALL HORIZONTAL STEEL TOGGLE CLAMP WITH BASE

Materials:

- (1) Handle covered with thermoplastic rubber.
- (2) Free-cutting steel threaded stud.
- (3) TPV rubber pressure tip.
- (4) Steel lock nut (DIN 934).
- (5) Sheared and bent base and lever system in sheet metal (DD13).
- (6) Rotation pins and rivets in stainless steel (Aisi 304).
- (7) Sheared and bent washers in sheet metal (DD13).

Surface finish:

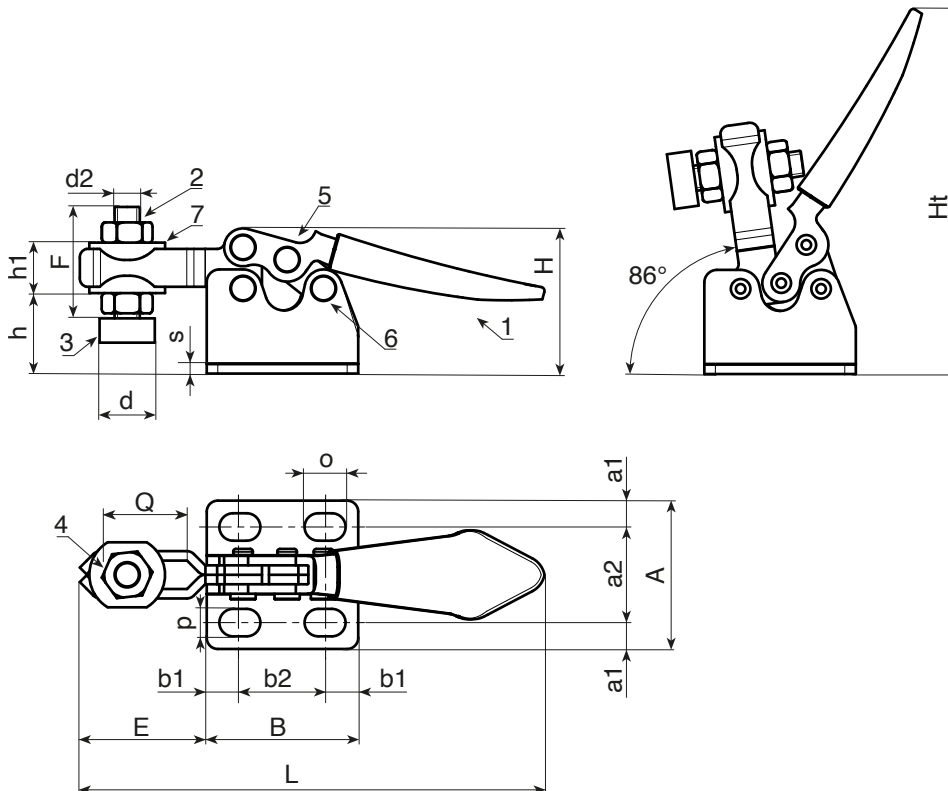
Smooth.

Colour:

- (1) Yellow.
- (3) Red.
- (2-4-5-7) Standard blue galvanising.

Special Requests:

- None.



art.	h	L	A	B	E	F	H	Ht	Q	d	d2	o	p	a1	a2	b1	b2	h1	s	F1 (Kg)	
J270010.FZ10	10	75	24	24	20	17	18	52	13	9	M4	6,5	4,3	4,3	15,4	5,3	13,4	6	1,5	40	26
J270014.FZ10	10	75	24	24	20	17	24	60	13	9	M4	6,5	4,3	4,3	15,4	5,3	13,4	6	1,5	40	29

J272

NEW

+80°
-20°

TPV

DD13

UL94
HB

RoHS
COMPLIANT

HORIZONTAL STEEL TOGGLE CLAMP WITH BASE AND RUBBER HANDLE

Materials:

- (1) TPV thermoplastic rubber handle. Hardness 75 Shore.
- (2) Free-cutting steel threaded stud.
- (3) Chloroprene rubber pressure tip. Hardness 75 Shore.
- (4) Steel lock nut (DIN 934).
- (5) Sheared and bent base and lever system in sheet metal (DD13).
- (6) Rotation pins and fixing rivets in stainless steel (Aisi 303).
- (7) Bent washers in sheet metal (DD13).

Surface finish:

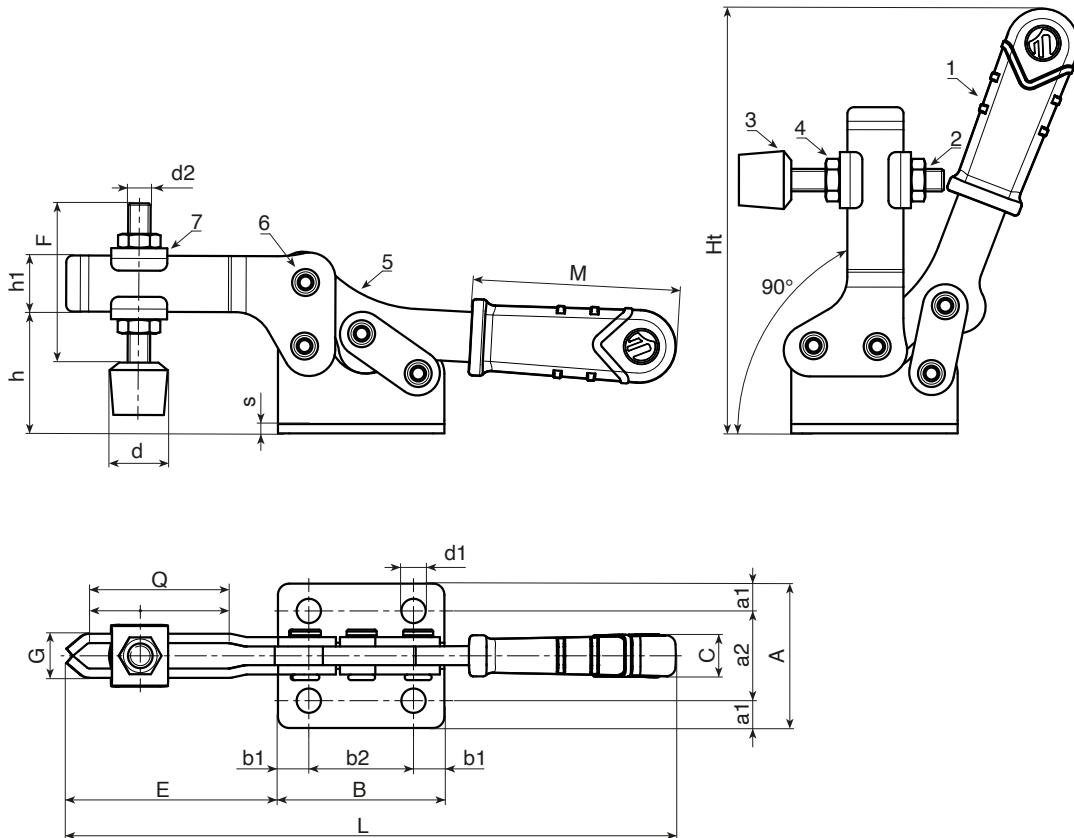
Smooth.

Colour:

- (1) Red (RAL 3000).
- (3) Black (RAL 9011).
- (2-4-5-7) Standard blue galvanising.

Special Requests:

- None.



art.	F1 (Kg)	L	A	B	C	E	F	G	Ht	Q	M	d	d1	d2	a1	a2	b1	b2	h	h1	s	g
J272010.FZ16	100	120	25	29	12	42	32	12,5	86	20	40	15	4,5	M6	5,75	17	7,75	13,5	20,5	11	3	151
J272012.FZ16	120	162	38	44	12	57	44	12	115	32	55	15	6,5	M6	7	24	8	28	32	15	2,5	220
J272020.FZ16	200	190	43	58	12	68	54	14	135	30	65	20	6,5	M8	8	27	9	40	37	16	3	380
J272030.FZ16	300	260	62	79	14,5	100	75	18	204	60	75	25	8,5	M10	11,5	39	11,5	56	51	23	4	840
J272035.FZ16	350	288	62	79	14,5	118	75	18	204	77	75	25	8,5	M10	11,5	39	11,5	56	51	23	4	860

J276

NEW

+80°
-20°

TPV

DD13

UL94
HB

RoHS
COMPLIANT

VERTICAL STEEL TOGGLE CLAMP WITH BASE AND RUBBER HANDLE

Materials:

- (1) TPV thermoplastic rubber handle. Hardness 75 Shore.
- (2) Free-cutting steel threaded stud.
- (3) Chloroprene rubber pressure tip. Hardness 75 Shore.
- (4) Steel lock nut (DIN 934).
- (5) Sheared and bent base and lever system in sheet metal (DD13).
- (6) Rotation pins and fixing rivets in stainless steel (Aisi 303).
- (7) Bent washers in sheet metal (DD13).

Surface finish:

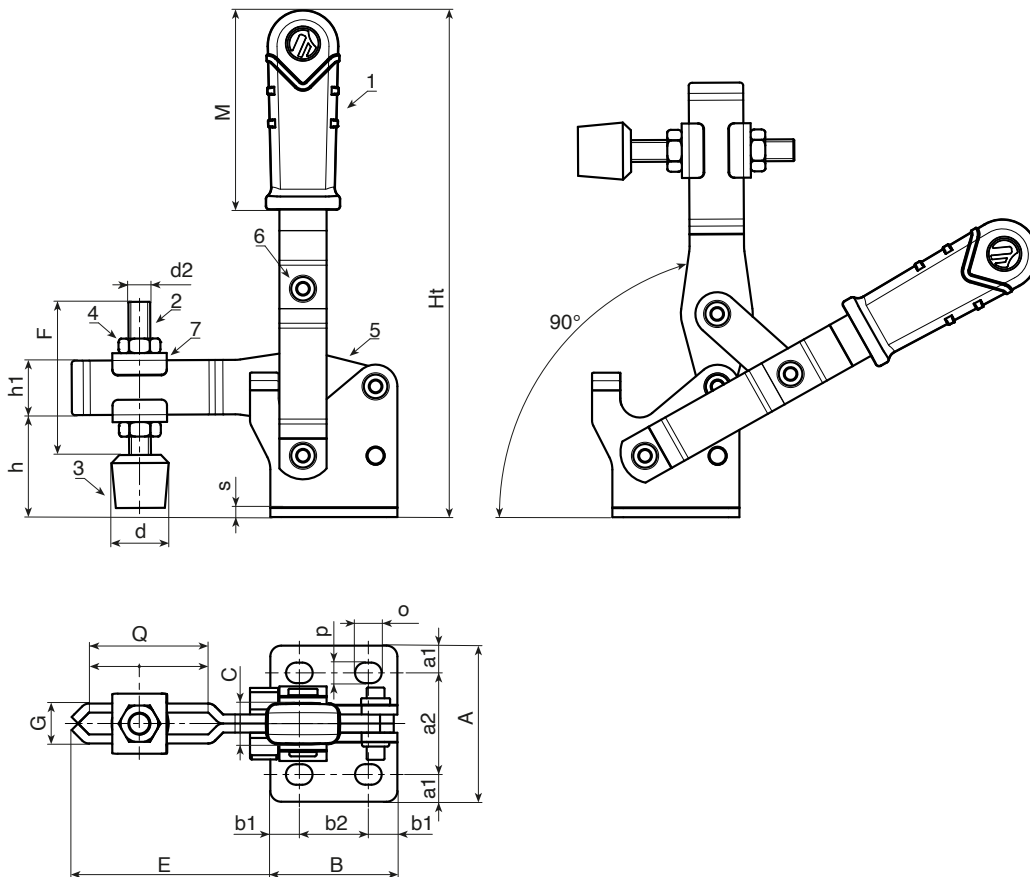
Smooth.

Colour:

- (1) Red (RAL 3000).
- (3) Black (RAL 9011).
- (2-4-5-7) Standard blue galvanising.

Special Requests:

- None.



art.	F1 (Kg)	A	B	C	E	F	G	Ht	Q	M	d	d2	o	p	a1	a2	b1	b2	h	h1	s	g
J276009.FZ16	90	40	25	12	42	32	12,5	101	20	40	15	M6	5,5	5,5	6,6	26,8	6,15	12,7	23	10	3	168
J276012.FZ16	120	43	35	12	50	44	11	140	32	55	15	M6	5,5	5,5	7	29	8	19	28	15	2,5	247
J276020.FZ16	200	45	43	12	64	54	14,5	165	40	65	20	M8	9	6,5	6,5	32	10,5	22	34	17,8	3	400
J276030.FZ16	300	64	56	14,5	83	75	18	200	60	75	25	M10	10,5	8,5	9	46	13,5	29	41	20,5	3,5	790

J278

NEW

+80°
-20°

TPV

DD13

UL94
HB

RoHS
COMPLIANT

VERTICAL STEEL TOGGLE CLAMP WITH RUBBER HANDLE AND WITHOUT BASE

Materials:

- (1) TPV thermoplastic rubber handle. Hardness 75 Shore.
- (2) Free-cutting steel threaded stud.
- (3) Chloroprene rubber pressure tip. Hardness 75 Shore.
- (4) Steel lock nut (DIN 934).
- (5) Sheared and bent base and lever system in sheet metal (DD13).
- (6) Rotation pins and fixing rivets in stainless steel (Aisi 303).
- (7) Bent washers in sheet metal (DD13).

Surface finish:

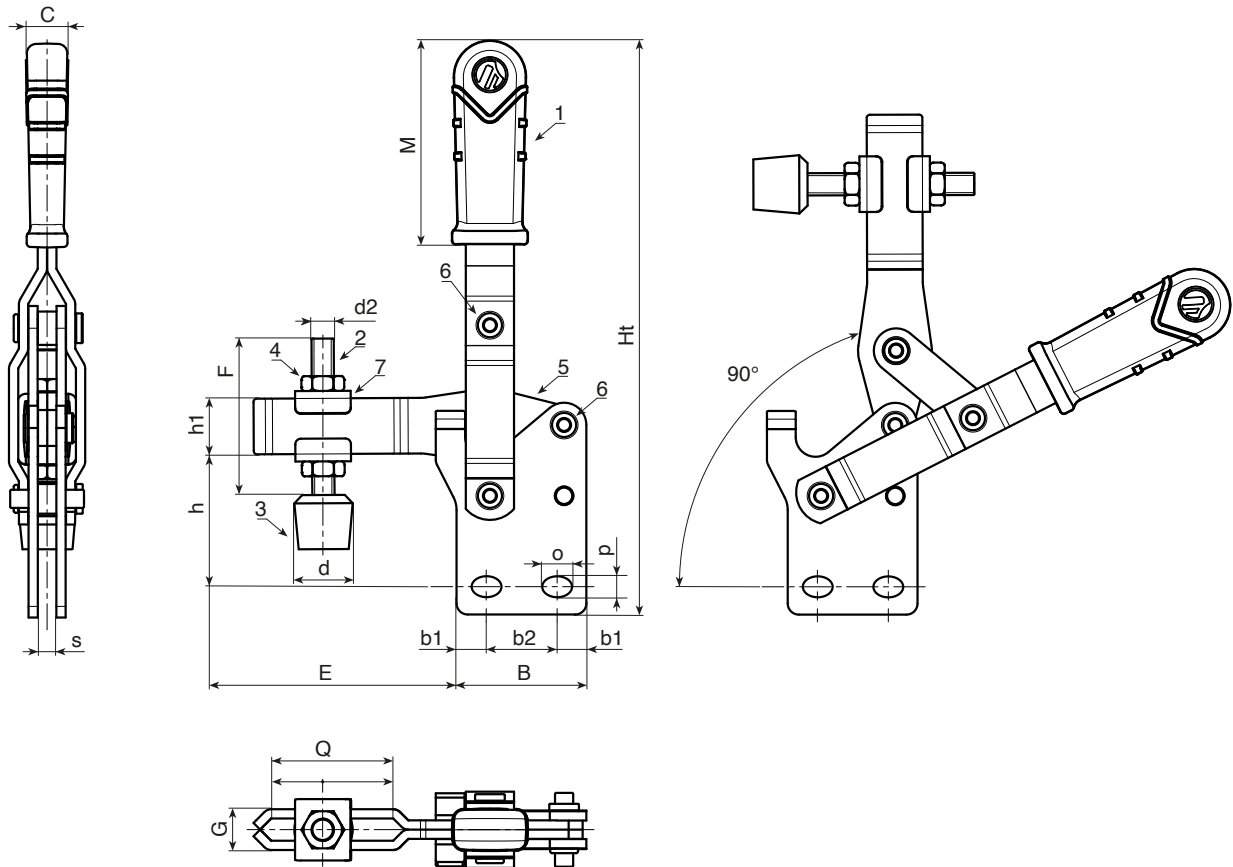
Smooth.

Colour:

- (1) Red (RAL 3000).
- (3) Black (RAL 9011).
- (2-3-4-5-7) Standard blue galvanising.

Special Requests:

- None.



art.	F1 (Kg)	B	C	E	F	G	Ht	Q	M	d	d2	o	p	b1	b2	h	h1	s	
J278009.FZ16	90	25,5	12	42	32	12,5	112	20	40	15	M6	5,3	5,3	6,4	12,7	29	10	6	167
J276012.FZ16	125	35	12	50	44	11	155	32	55	15	M6	5,3	5,3	8	19	36	15	5	245
J278020.FZ16	200	42,5	12	64	54	14,5	180	40	65	20	M8	9	6,5	10,25	22	42	17,8	6	401
J278030.FZ16	300	56	14,5	83	75	18	225	60	75	25	M10	10,5	8,5	13,5	29	55	20,5	8	783

J290

NEW



TPV

DD13

UL94
HB



LIGHT TOGGLE CLAMP WITH THRUST ROD AND RUBBER HANDLE

Materials:

- (1) TPV thermoplastic rubber handle. Hardness 75 Shore.
- (2) Sheared and bent base and lever system in sheet metal (DD13).
- (3) Rotation pins and fixing rivets in stainless steel (Aisi 304).
- (4) Thrust rod with threaded hole in free-cutting steel.

Surface finish:

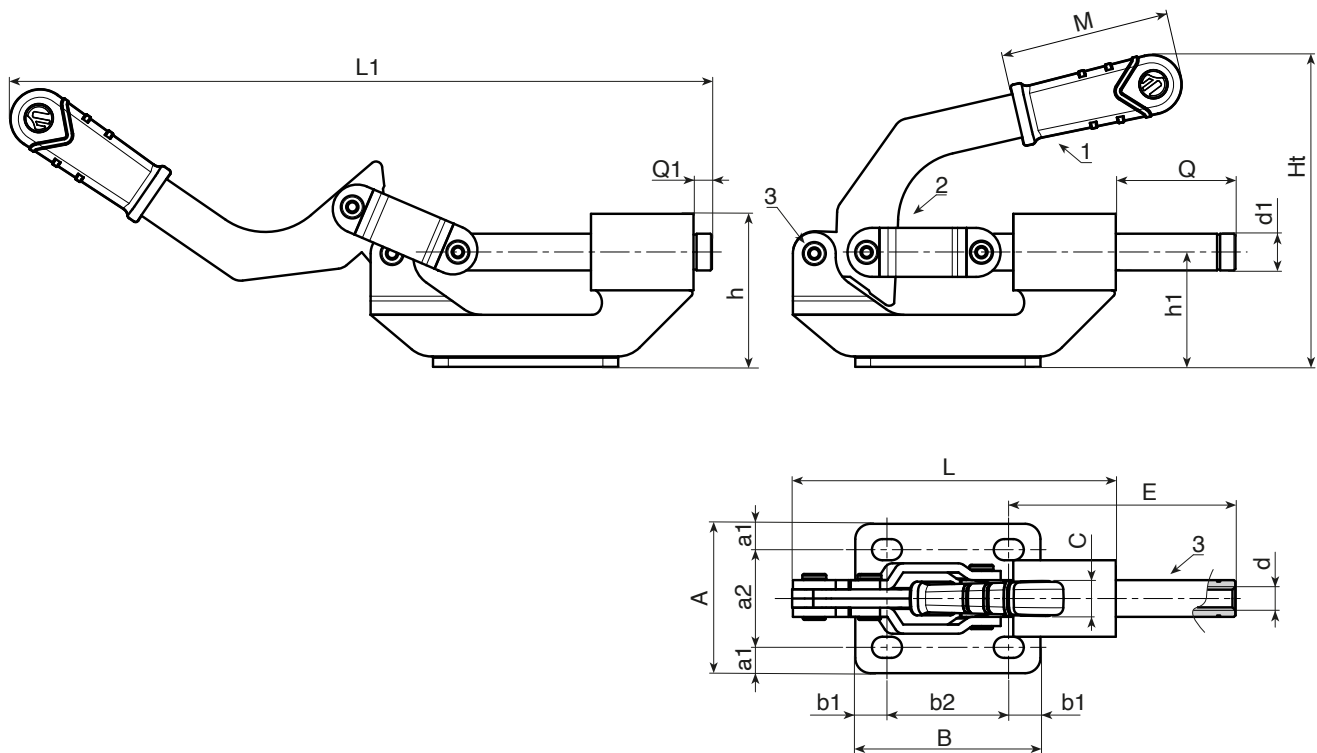
Smooth.

Colour:

- (1) Red (RAL 3000).
- (4) Black-oxide treated.
- (2) Standard blue galvanising.

Special Requests:

- None.



art.	F1 (Kg)	L	L1	Ht	h	h1	A	B	C	E	M	Q	Q1	s	a1	a2	b1	b2	d	d1	o	p		
J290022.FZ16	220	107	234	98	47	34	49	60	12,5	79	65	41	3	3	8,5	32	10	40	M8	12	10	7	458	

J295

NEW

+80°
-20°

TPV

DD13

UL94
HB

RoHS
COMPLIANT

LIGHT TOGGLE CLAMP WITH THRUST ROD AND THREADED ATTACHMENT

Materials:

- (1) TPV thermoplastic rubber handle. Hardness 75 Shore.
- (2) Sheared and bent base and lever system in sheet metal (DD13).
- (3) Rotation pins and fixing rivets in stainless steel (Aisi 304).
- (4) Thrust rod with threaded hole in free-cutting steel.
- (5) Steel lock nut, thin series with fine pitch.
- (6) Sheared and bent rectangular washers in sheet metal (DD13) for panel mounting.

Surface finish:

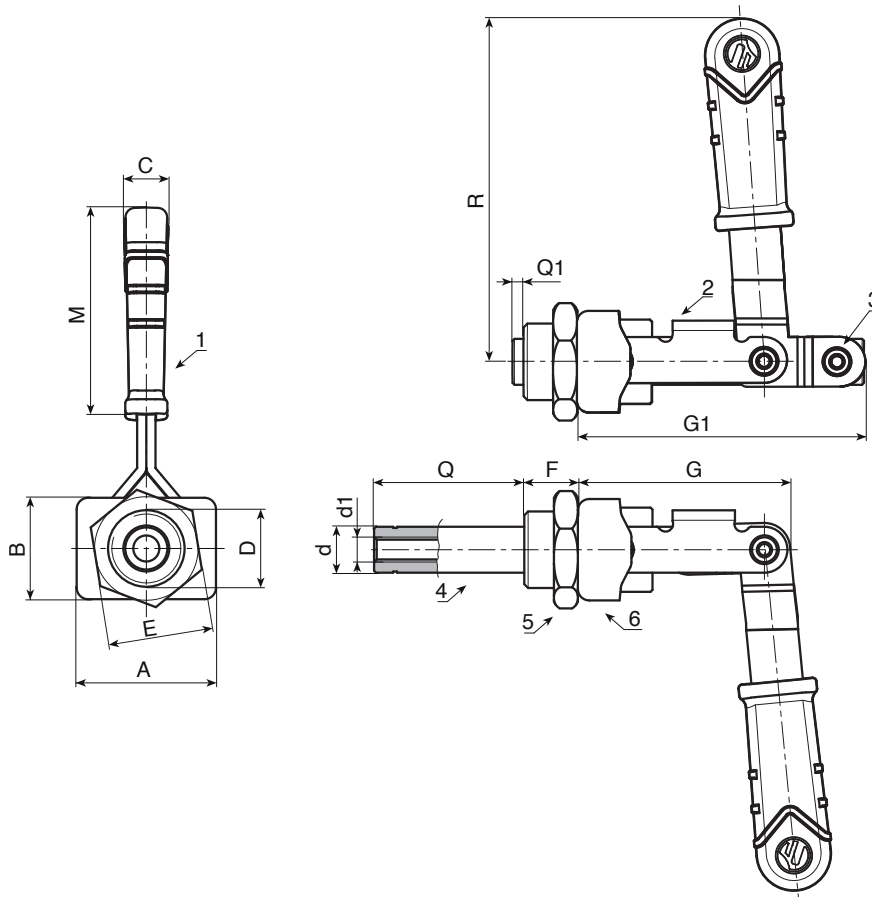
Smooth.

Colour:

- (1) Red (RAL 3000).
- (4) Black-oxide treated.
- (2-5-6) Standard blue galvanising.

Special Requests:

- None.



art.	F1 (Kg)	A	B	C	D	E	F	G	G1	Q	Q1	M	R	d	d1	g
J295015.FZ16	150	36,5	26,5	12	M20x1,5	27	14	75	56	38,5	1,5	53	90	12	M8	280

BOTECO
LOCKINGS

327 0

Stock availability as % (🛒)
90% (●) - 40% (●) - 5% (●)

J800

NEW



CR

AVP

UL94
HB



PRESSURE TIP (SPARE PART)

Materials:

- (1) Free-cutting steel threaded stud.
- (2) Pair of steel threaded lock nuts (DIN 913).
- (3) Chloroprene rubber pressure tip (neoprene). Hardness 75 Shore.

Surface finish:

Smooth.

Colour:

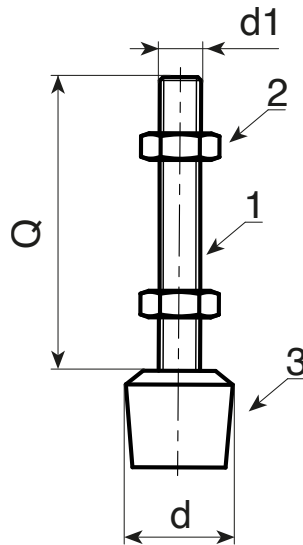
- (2) Black (RAL 9011).
- (1-2) Standard blue galvanising.

Packaging:

Tip supplied with the two nuts mounted.

Special Requests:

- None.



art.	d	d1	Q	
J80015.TM06X3201	15	M6	32	14
J80015.TM06X4401	15	M6	44	14
J80020.TM08X5401	20	M8	54	35
J80025.TM10X7501	25	M10	75	74

J801

NEW

+80°
-20°

DD13

RoHS
COMPLIANT

BENT WASHERS IN SHEET METAL (SPARE PART)

Materials:

Sheared and bent washer in sheet metal (DD13).

Surface finish:

Smooth.

Colour:

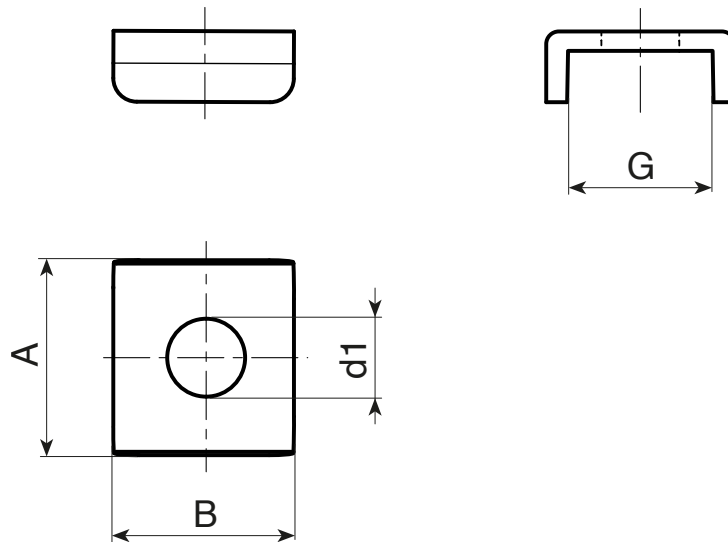
Standard blue galvanising.

Packaging:

No packaging, sold individually.

Special Requests:

- None.



art.	A	B	G	d1	
J801010.F06.5Z	17	15	12	6,5	5
J801012.F06.5Z	18	15	13	6,5	5
J801014.F08.5Z	19	18	14	8,5	7
J801018.F10.5Z	24	25	18	10,5	14

MANICO.LEVA

NEW

+80°
-20°

TPV

UL94
HB

RoHS
COMPLIANT

HANDLE WITH RECTANGULAR HOLE FOR TOGGLE CLAMPS (SPARE PART)

Materials:

TPV thermoplastic rubber. Hardness 75 Shore.

Surface finish:

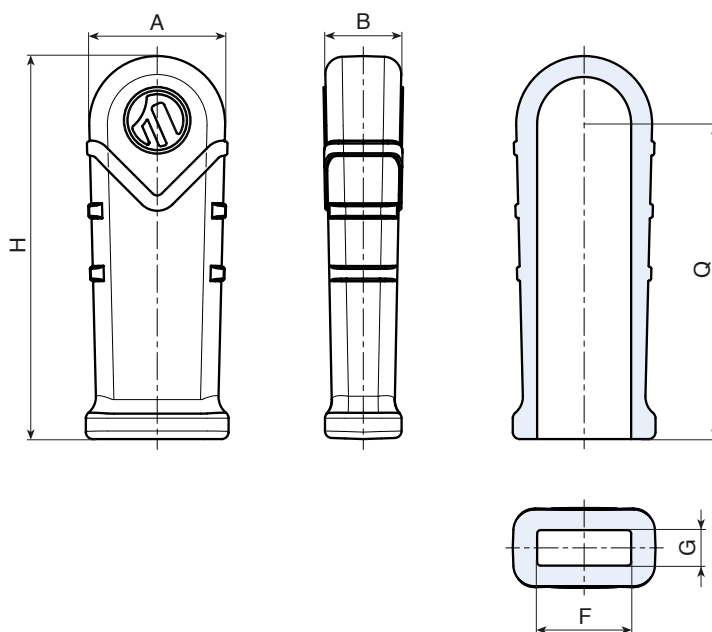
Smooth.

Colour:

Red (RAL 3000 code 16).

Special Requests:

- None.



art.	H	A	B	F	G	Q	
MANICO.LEVA4216	40	16	12	10	6	35	4
MANICO.LEVA5516	55	20	11	14	5	48	6
MANICO.LEVA6516	65	22	12,5	15	6	57	8
MANICO.LEVA7516	75	22	14	16	8	68	10