



**BOTECO®**

**YOUR MECHANICAL COMPONENT**

## GROUP - L

### WING NUTS AND T-HANDLES





**WING**  
FOR F  
FRE



**BOTECA®**

# L270



## T-HANDLE WITH THREADED INSERT

### Materials:

Reinforced polyamide.  
Resistant to oils and greases.

### Surface finish:

Satin.

### Colour:

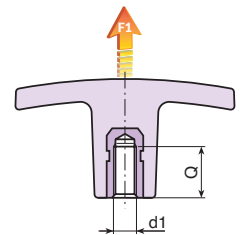
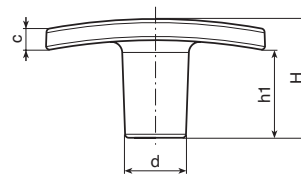
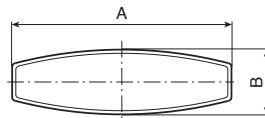
Black: (RAL 9011 cod. 01).  
Orange: (RAL 2004 cod. 02).  
Red: (RAL 3000 cod. 16).

### Inserts:

Brass insert with female threaded hole (thread tolerance 6H).

### Special Requests:

- Upon request and for special quantities inserts can be supplied in different materials.
- Upon request and for special quantities available in the colours indicated in the chart [page 807].



### Version L270 - 01 Black T-handle (RAL 9001 code 01)

Art.	A	B	H	h1	c	d	d1 <sub>6H</sub>	Q	📦	F1 (N)
L27050.TM0501	50	15	24	17	5	14	M5	12	13	4100
L27050.TM0601	50	15	24	17	5	14	M6	10	11	4100
L27050.TM0801	50	15	24	17	5	14	M8	14	12	4100
L27060.TM0501	60	18	33	24	6	16.5	M5	12	19	5800
L27060.TM0601	60	18	33	24	6	16.5	M6	10	16.5	5800
L27060.TM0801	60	18	33	24	6	16.5	M8	14	17.5	5800
L27060.TM1001	60	18	33	24	6	16.5	M10	21	21	5800
L27072.TM0601	72	19	34	20	10	18	M6	15	25	6500
L27072.TM0801	72	19	34	20	10	18	M8	20	28	6500
L27072.TM1001	72	19	34	20	10	18	M10	21	30	6500
L27072.TM1201	72	19	34	20	10	18	M12	17	30	6500

### Version L270 - 02 Orange T-handle (RAL 2004 code 02)

Art.	A	B	H	h1	c	d	d1 <sub>6H</sub>	Q	📦	F1 (N)
L27050.TM0602	50	15	24	17	5	14	M6	10	11	4100
L27060.TM0802	60	18	33	24	6	16.5	M8	14	17.5	5800
L27072.TM1002	72	19	34	20	10	18	M10	21	30	6500

### Version L270 - 16 Red T-handle (RAL 3000 code 16)

Art.	A	B	H	h1	c	d	d1 <sub>6H</sub>	Q	📦	F1 (N)
L27050.TM0516	50	15	24	17	5	14	M5	12	13	4100
L27050.TM0616	50	15	24	17	5	14	M6	10	11	4100
L27060.TM0816	60	18	33	24	6	16.5	M8	14	17.5	5800
L27072.TM1016	72	19	34	20	10	18	M10	21	30	6500

# L270CIN

## T-HANDLE WITH STAINLESS STEEL THREADED INSERT

+135°  
-30°

PA6  
+G.F.

UL94  
HB

RoHS  
COMPLIANT

INOX

### Materials:

Reinforced polyamide.  
Resistant to oils and greases.

### Surface finish:

Satin.

### Colour:

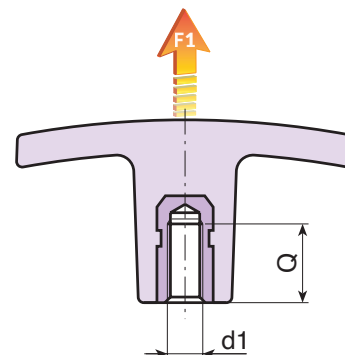
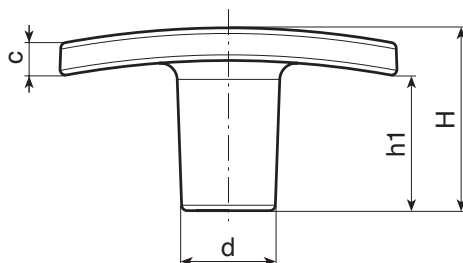
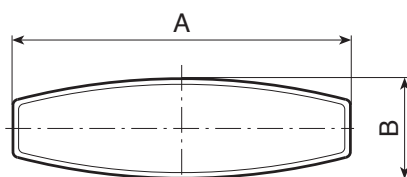
Black (RAL 9011).

### Inserts:

Stainless steel insert with female threaded hole (Aisi 303)  
(thread tolerance 6H).

### Special Requests:

- Upon request and for special quantities available in the colours indicated in the chart [page 807].



INOX

Art.	A	B	H	h1	c	d	d1 <sub>6H</sub>	Q	g	F1 (N)
L27050.TM0501CIN	50	15	24	17	5	14	M5	9	14	4100
L27050.TM0601CIN	50	15	24	17	5	14	M6	9	14	4100
L27050.TM0801CIN	50	15	24	17	5	14	M8	12	16	4100
L27060.TM0601CIN	60	18	33	24	6	16.5	M6	9	20	5800
L27060.TM0801CIN	60	18	33	24	6	16.5	M8	12	21	5800
L27060.TM1001CIN	60	18	33	24	6	16.5	M10	18	24	5800
L27072.TM0801CIN	72	19	34	20	10	18	M8	19	32	6500
L27072.TM1001CIN	72	19	34	20	10	18	M10	18	33	6500
L27072.TM1201CIN	72	19	34	20	10	18	M12	15	34	6500

# L271

## T-HANDLE WITH THREADED STUD



### Materials:

Reinforced polyamide.  
Resistant to oils and greases.

### Surface finish:

Satin.

### Colour:

Black (RAL 9011).

### Inserts:

#### L271:

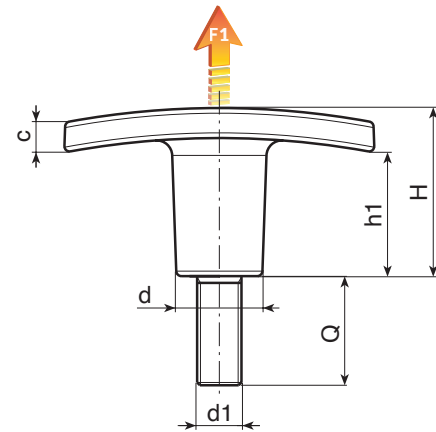
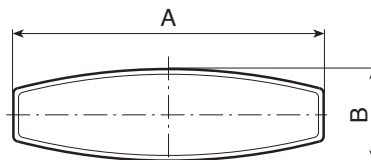
Galvanised steel threaded stud (thread tolerance 6g).

#### L271CIN:

Stainless steel threaded stud. (Aisi 303), (thread tolerance 6g).

### Special Requests:

- Upon request and for special quantities inserts can be supplied with customised lengths.
- Upon request and for special quantities inserts can be supplied in different materials.
- Upon request and for special quantities available in the colours indicated in the chart (attention: reduced range) [page 807].



### Version L271: with galvanised steel insert.

Art.	A	B	H	h1	c	d	LM	d1 <sup>6g</sup>	Q	g	F1 (N)
L27150.TM05X..01	50	15	24	17	5	14	30	M5	20-30	13-14	4100
L27150.TM06X..01	50	15	24	17	5	14	30	M6	15-20-30-40	14,5-15-16,5-18	4100
L27160.TM05X..01	60	18	33	24	6	16.5	30	M5	15-20-30	20-21	4100
L27160.TM06X..01	60	18	33	24	6	16.5	30	M6	20-30	23-25	5800
L27160.TM08X..01	60	18	33	24	6	16.5	30	M8	20-30-40	28-31-34	5800
L27160.TM10X..01	60	18	33	24	6	16.5	30	M10	20-30-40	30-35	5800
L27172.TM06X..01	72	19	34	20	10	18	80	M6	20-30-40	30-32-34	6500
L27172.TM08X..01	72	19	34	20	10	18	80	M8	20-30-40	39-42-45	6500
L27172.TM10X..01	72	19	34	20	10	18	80	M10	30-40	56-61	6500
L27172.TM12X..01	72	19	34	20	10	18	80	M12	30-40-50	58-64-71	6500

Enter the selected stud length in place of the two dots .. in the item code. Customised stud length available for a minimum of 250 pieces.

LM = Maximum mouldable length.

### Version L271CIN: with stainless steel insert (Aisi 303).

Art.	A	B	H	h1	c	d	LM	d1 <sup>6g</sup>	Q	g	F1 (N)
L27150.TM05X..01CIN	50	15	24	17	5	14	30	M5	A.R.	-	4100
L27150.TM06X..01CIN	50	15	24	17	5	14	30	M6	A.R.	-	4100
L27160.TM06X..01CIN	60	18	33	24	6	16.5	30	M6	A.R.	-	5800
L27160.TM08X..01CIN	60	18	33	24	6	16.5	30	M8	A.R.	-	5800
L27172.TM08X..01CIN	72	19	34	20	10	18	80	M8	A.R.	-	6500
L27172.TM10X..01CIN	72	19	34	20	10	18	80	M10	A.R.	-	6500
L27172.TM12X..01CIN	72	19	34	20	10	18	80	M12	A.R.	-	6500

Enter the selected stud length in place of the two dots .. in the item code.

A.R. = Upon request, for a minimum of 300 pieces.

LM = Maximum mouldable length.

INOX



Stock availability as % (🛒)  
90% (●) - 40% (●) - 5% (●)

# L272

## T-HANDLE WITH PLASTIC THREADED HOLE



### Materials:

Reinforced polyamide.  
Resistant to oils and greases.

### Surface finish:

Satin.

### Colour:

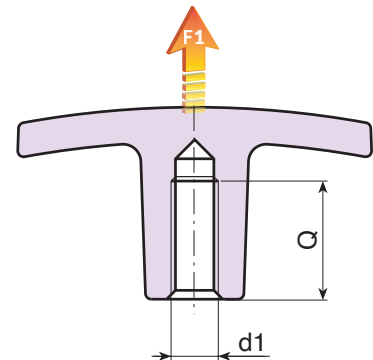
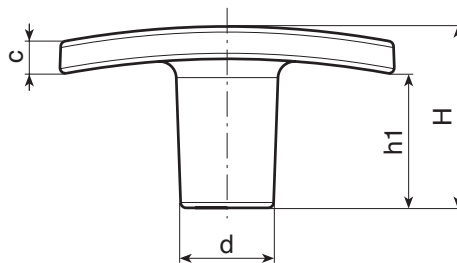
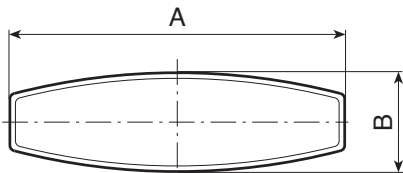
Black (RAL 9011).


### Hole:

Female threaded hole obtained by moulding the plastic (thread tolerance not applicable).

### Special Requests:

- Upon request and for special quantities available in the colours indicated in the chart [page 807].



Art.	A	B	H	h1	c	d	d1	Q		F1 (N)
L27250.TM0501	50	15	24	17	5	14	M5	20	8	2800
L27250.TM0601	50	15	24	17	5	14	M6	20	8	2800
L27260.TM0501	60	18	33	24	6	16.5	M5	19	14	3000
L27260.TM0601	60	18	33	24	6	16.5	M6	19	14	3000
L27260.TM0801	60	18	33	24	6	17	M8	19	14	3000
L27260.TM1001	60	18	33	24	6	18	M10	19	13	3000
L27272.TM0801	72	19	34	20	10	18	M8	21	20	4600
L27272.TM1001	72	19	34	20	10	18	M10	21	20	4600
L27272.TM1201	72	19	34	20	10	18	M12	20	19	4600

# L273



## T-HANDLE WITH INSERT AND SMOOTH BORE

### Materials:

Reinforced polyamide.  
Resistant to oils and greases.

### Surface finish:

Satin.

### Colour:

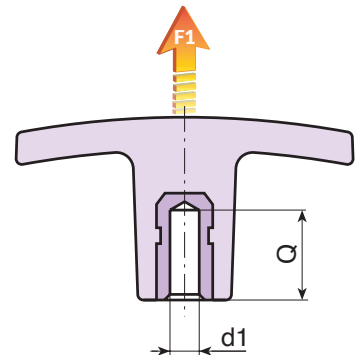
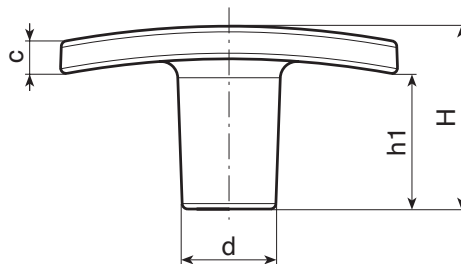
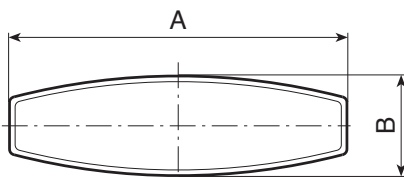
Black (RAL 9011).

### Inserts:

Brass insert with blind smooth bore (bore tolerance H9).  
ATTENTION: bore cannot be widened.  
(\* Galvanised steel insert with blind smooth bore (bore tolerance H10).

### Special Requests:

- Upon request and for special quantities inserts can be supplied in different materials.
- Upon request and for special quantities available in the colours indicated in the chart [page 807].



Art.	A	B	H	h1	c	d	d1 <sub>H9</sub>	Q		F1 (N)
L27350.TD0601CON	50	15	24	17	5	14	6	14	12	4100
L27360.TD0601CON	60	18	33	24	6	16.5	6	14	19	5800
L27360.TD0801CON	60	18	33	24	6	16.5	8	13	21	5800
L27372.TD0801CON	72	19	34	20	10	18	8	13	28	6500
L27372.TD1001	72	19	34	20	10	18	(*) 10	24	30	6500

# L803

## "EUROMODEL" WING NUT WITH THREADED THROUGH-HOLE INSERT

+135°  
-30°

PA6  
+G.F.

UL94  
HB

RoHS  
COMPLIANT

MODELLO  
DEPOSITATO

### Materials:

Reinforced polyamide.  
Resistant to oils and greases.

### Surface finish:

Satin.

### Colour:

Black (RAL 9011).

### Central Cap:

Grey polyamide (RAL 7035 code 13).

### Alternative Cap colours:

Orange (RAL 2004 cod. 02).  
Blue (RAL 5015 cod. 07).  
Yellow (RAL 1021 cod. 10).  
Red (RAL 3000 cod. 16).  
Green (RAL 6024 cod. 17).  
Black (RAL 9011 cod. 01).

### Inserts:

#### L803:

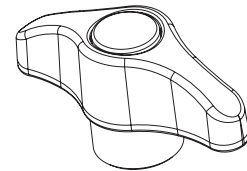
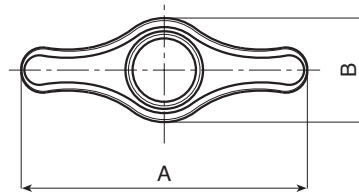
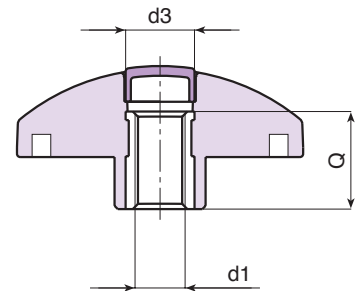
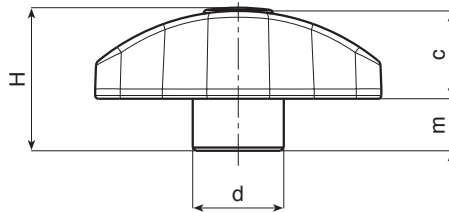
Brass insert with threaded through hole  
(thread tolerance 6H).

#### L803PIN:

Stainless steel insert with threaded through  
hole (Aisi 303) (thread tolerance 6H).

### Special requests:

- Upon request and for special quantities inserts can be supplied in different materials.
- Upon request and for special quantities available in the colours indicated in the chart (attention: reduced range) [page 807].



### Version L803: standard brass insert.

art.	A	B	H	m	c	d	d3	d1 <sub>6H</sub>	Q	
L80344.TM050113	44	16	22	8	14	14	10	M5	15	10
L80344.TM060113	44	16	22	8	14	14	10	M6	15	10
L80344.TM080113	44	16	22	8	14	14	10	M8	15	11
L80352.TM050113	52	19	26	9.5	16.5	17	13	M5	18	15
L80352.TM060113	52	19	26	9.5	16.5	17	13	M6	18	15
L80352.TM080113	52	19	26	9.5	16.5	17	13	M8	18	16
L80352.TM100113	52	19	26	9.5	16.5	17	13	M10	18	16
L80367.TM060113	67	24	32.5	11	21.5	21	16	M6	18	26
L80367.TM080113	67	24	32.5	11	21.5	21	16	M8	18	26
L80367.TM100113	67	24	32.5	11	21.5	21	16	M10	18	27
L80367.TM120113	67	24	32.5	11	21.5	21	16	M12	18	27

### Version L803 PIN - stainless steel insert (Aisi 303)

art.	A	B	H	m	c	d	d3	d1 <sub>6H</sub>	Q	
L80344.TM060113PIN	44	16	22	8	14	14	10	M6	15	10
L80352.TM080113PIN	52	19	26	9.5	16.5	17	13	M8	18	16
L80367.TM100113PIN	67	24	32.5	11	21.5	21	16	M10	18	27

INOX



# L806



PA6  
+G.F.

UL94  
HB



MODELLO  
DEPOSITATO

## “EUROMODEL” WING NUT WITH THREADED THROUGH-HOLE INSERT WITHOUT CAP

### Materials:

Reinforced polyamide.  
Resistant to oils and greases.

### Surface finish:

Satin.

### Colour:

Black (RAL 9011).

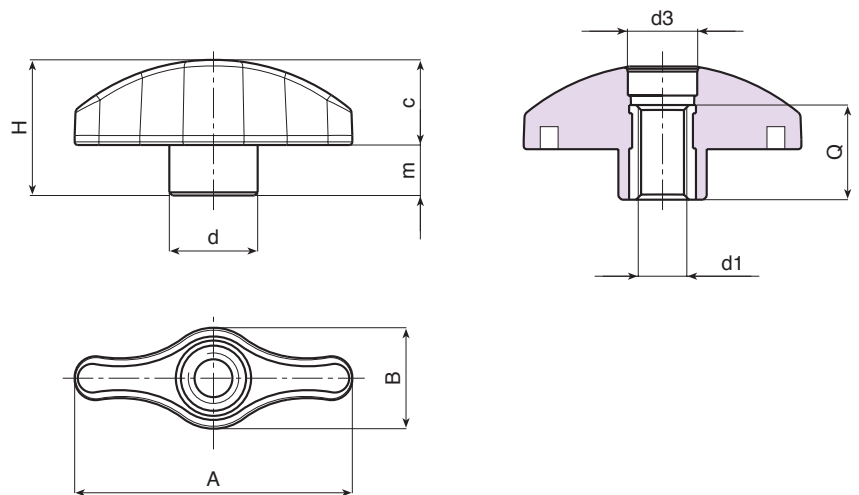
### Inserts:

**L806:** Brass insert with threaded through hole (thread tolerance 6H).

**L806PIN:** Stainless steel insert with threaded through hole (Aisi 303) (thread tolerance 6H).

### Special requests:

- Upon request and for special quantities inserts can be supplied in different materials.
- Upon request and for special quantities available in the colours indicated in the chart (attention: reduced range) [page 807].



### Version L806: standard brass insert.

art.	A	B	H	m	c	d	d3	d1 <sub>6H</sub>	Q	g
L80644.TM0501	44	16	21.5	8	14	14	10	M5	15	9
L80644.TM0601	44	16	21.5	8	14	14	10	M6	15	9
L80644.TM0801	44	16	21.5	8	14	14	10	M8	15	10
L80652.TM0501	52	19	25.5	9.5	16.5	17	13	M5	18	14
L80652.TM0601	52	19	25.5	9.5	16.5	17	13	M6	18	15
L80652.TM0801	52	19	25.5	9.5	16.5	17	13	M8	18	16
L80652.TM1001	52	19	25.5	9.5	16.5	17	13	M10	18	16
L80667.TM0601	67	24	32	11	21.5	21	16	M6	18	25
L80667.TM0801	67	24	32	11	21.5	21	16	M8	18	25
L80667.TM1001	67	24	32	11	21.5	21	16	M10	18	26
L80667.TM1201	67	24	32	11	21.5	21	16	M12	18	26

### Version L806PIN: stainless steel insert (Aisi 303).

art.	A	B	H	m	c	d	d3	d1 <sub>6H</sub>	Q	g
L80644.TM0601PIN	44	16	21.5	8	14	14	10	M6	15	9
L80652.TM0801PIN	52	19	25.5	9.5	16.5	17	13	M8	18	16
L80667.TM1001PIN	67	24	32	11	21.5	21	16	M10	18	26

INOX

# L804

## "EUROMODEL" WING NUT WITH THREADED STUD



MODELLO DEPOSITATO

### Materials:

Reinforced polyamide.  
Resistant to oils and greases.

### Surface finish:

Satin.

### Colour:

Black (RAL 9011).

### Central Cap:

Grey PA6 (RAL 7035 code 13).

### Alternative Cap colours:

Orange (RAL 2004 cod. 02).  
Blue (RAL 5015 cod. 07).  
Yellow (RAL 1021 cod. 10).  
Red (RAL 3000 cod. 16).  
Green (RAL 6024 cod. 17).  
Black (RAL 9011 cod. 01).

### Inserts:

#### L804:

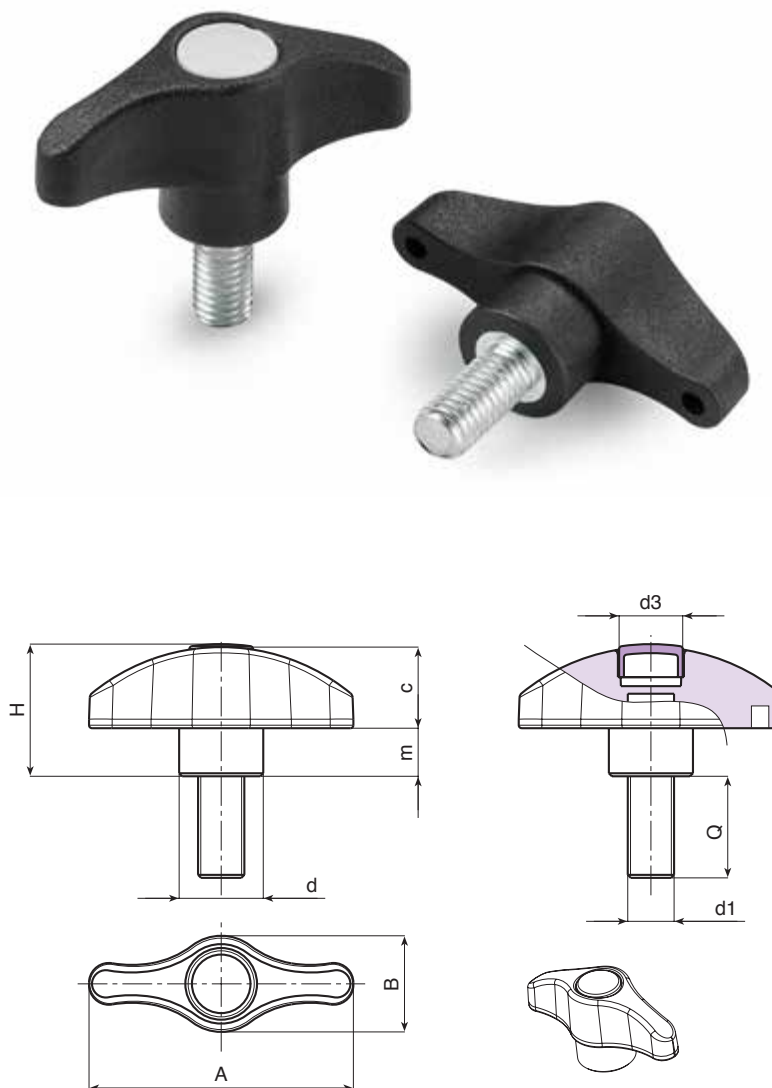
Galvanised steel threaded stud (thread tolerance 6g).

#### L804CIN:

Stainless steel threaded stud (Aisi 303) (thread tolerance 6g).

### Special requests:

- Upon request and for special quantities inserts can be supplied with customised lengths.
- Upon request and for special quantities inserts can be supplied in different materials.
- Upon request and for special quantities available in the colours indicated in the chart (attention: reduced range) [page 807].



### Version L804 - galvanised steel stud.

art.	A	B	H	m	c	d	d3	LM	d1 <sub>6g</sub>	Q	g
L80444.TM05X..0113	44	16	22	8	14	14	10	80	M5	16-20-25-30-40-50	11-11,5-12-12,5-13,5-14,5
L80444.TM06X..0113	44	16	22	8	14	14	10	80	M6	16-20-25-30-40-50	12-13-14-15-16-17
L80444.TM08X..0113	44	16	22	8	14	14	10	80	M8	16-20-25-30-40-50	19-20,5-22-23,5-26-29
L80452.TM06X..0113	52	19	26	9,5	16,5	17	13	80	M6	16-20-25-30-40-50	17-18-19-20-21-22
L80452.TM08X..0113	52	19	26	9,5	16,5	17	13	80	M8	16-20-25-30-40-50	24-25,5-27-28,5-31-34
L80452.TM10X..0113	52	19	26	9,5	16,5	17	13	80	M10	20-25-30-40-50	32-35-38-42-47
L80467.TM06X..0113	67	24	32,5	11	21,5	21	16	100	M6	A.R.	-
L80467.TM08X..0113	67	24	32,5	11	21,5	21	16	100	M8	16-20-25-30-40-50	32-33,5-35-36,5-39,5-42,5
L80467.TM10X..0113	67	24	32,5	11	21,5	21	16	100	M10	30-50	44,5-54,5
L80467.TM12X..0113	67	24	32,5	11	21,5	21	16	100	M12	30-40	52-59

Enter the selected stud length in place of the two dots . . in the item code.

A.R. = Customised stud length available for a minimum of 250 pieces.

LM = Maximum mouldable length.

### Version L804CIN: stainless steel stud (Aisi 303).

art.	A	B	H	m	c	d	d3	LM	d1 <sub>6g</sub>	Q	g
L80444.TM06X..0113CIN	44	16	22	8	14	14	10	80	M6	A.R.	-
L80452.TM08X..0113CIN	52	19	26	9,5	16,5	17	13	80	M8	A.R.	-
L80467.TM10X..0113CIN	67	24	32,5	11	21,5	21	16	100	M10	A.R.	-

Enter the selected stud length in place of the two dots . . in the item code.

A.R. = Customised stud length available for a minimum of 250 pieces.



# L807



## “EUROMODEL” WING NUT WITH THREADED STUD WITHOUT CAP

MODELLO DEPOSITATO

### Materials:

Reinforced polyamide.  
Resistant to oils and greases.

### Surface finish:

Satin.

### Colour:

Black (RAL 9011).

### Inserts:

#### L807:

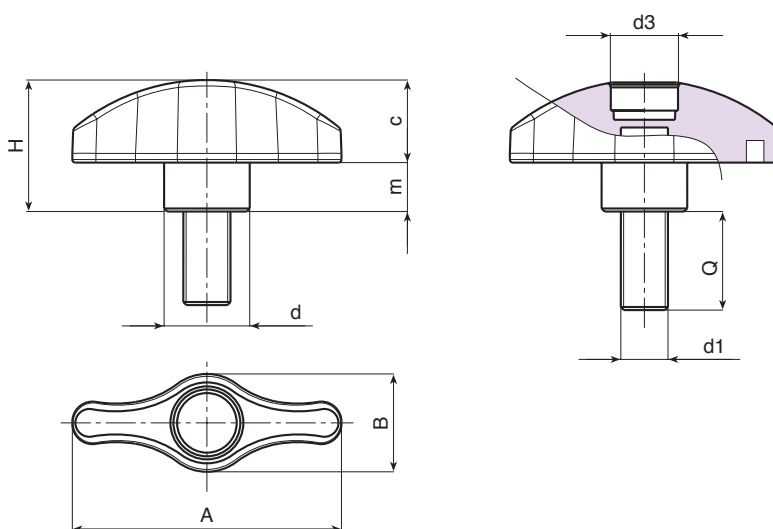
Galvanised steel threaded stud (thread tolerance 6g).

#### L807CIN:

Stainless steel threaded stud (Aisi 303) (thread tolerance 6g).

### Special requests:

- Upon request and for special quantities inserts can be supplied with customised lengths.
- Upon request and for special quantities inserts can be supplied in different materials.
- Upon request and for special quantities available in the colours indicated in the chart (attention: reduced range) [page 807].



### Version L807: galvanised steel stud.

art.	A	B	H	m	c	d	d3	LM	d1 <sub>6g</sub>	Q	g
L80744.TM05X..01	44	16	21.5	8	14	14	10	80	M5	16-20-25-30-40-50	10-10,5-11-11,5-12,5-13,5
L80744.TM06X..01	44	16	21.5	8	14	14	10	80	M6	16-20-25-30-40-50	11-12-13-14-15-16
L80744.TM08X..01	44	16	21.5	8	14	14	10	80	M8	16-20-25-30-40-50	18-19,5-21-22,5-25-28
L80752.TM06X..01	52	19	25.5	9.5	16.5	17	13	80	M6	16-20-25-30-40-50	16-17-18-19-20-21
L80752.TM08X..01	52	19	25.5	9.5	16.5	17	13	80	M8	16-20-25-30-40-50	23-24,5-26-27,5-30-33
L80752.TM10X..01	52	19	25.5	9.5	16.5	17	13	80	M10	20-25-30-40-50	31-34-37-41-46
L80767.TM06X..01	67	24	32	11	21.5	21	16	100	M6	A.R.	-
L80767.TM08X..01	67	24	32	11	21.5	21	16	100	M8	16-20-25-30-40-50	31-32,5-34-35,5-38,5-41,5
L80767.TM10X..01	67	24	32	11	21.5	21	16	100	M10	30-50	43,5-53,5
L80767.TM12X..01	67	24	32	11	21.5	21	16	100	M12	30-40	51-58

Enter the selected stud length in place of the two dots . . in the item code.

A.R. = Customised stud length available for a minimum of 250 pieces.

LM = Maximum mouldable length.

### Version L807CIN: stainless steel stud (Aisi 303).

art.	A	B	H	m	c	d	d3	LM	d1 <sub>6g</sub>	Q	g
L80744.TM06X..01CIN	44	16	22	8	14	14	10	80	M6	A.R.	-
L80752.TM08X..01CIN	52	19	26	9.5	16.5	17	13	80	M8	A.R.	-
L80767.TM10X..01CIN	67	24	32.5	11	21.5	21	16	100	M10	A.R.	-

Enter the selected stud length in place of the two dots . . in the item code.

A.R. = Customised stud length available for a minimum of 250 pieces.

LM = Maximum mouldable length.

INOX



# L805

## "EUROMODEL" WING NUT WITH INSERT AND SMOOTH THROUGH BORE

+135°  
-30°

PA6  
+G.F.

UL94  
HB

RoHS  
COMPLIANT

MODELLO  
DEPOSITATO

### Materials:

Reinforced polyamide.  
Resistant to oils and greases.

### Surface finish:

Satin.

### Colour:

Black (RAL 9011).

### Central Cap:

Grey polyamide (RAL 7035 code 13).

### Alternative Cap colours:

Orange (RAL 2004 cod. 02).  
Blue (RAL 5015 cod. 07).  
Yellow (RAL 1021 cod. 10).  
Red (RAL 3000 cod. 16).  
Green (RAL 6024 cod. 17).  
Black (RAL 9011 cod. 01).

### Inserts:

#### L805:

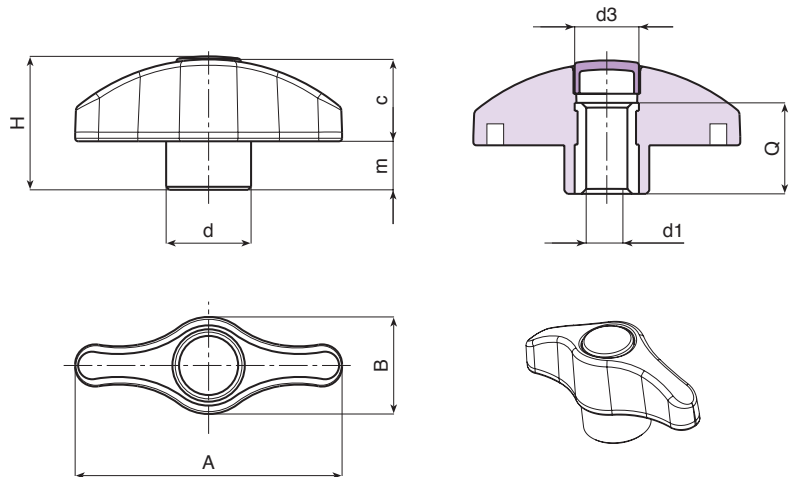
Brass insert with smooth through bore (bore tolerance H9).

#### L805PIN:

Galvanised steel insert with smooth through bore (Aisi 303)  
(bore tolerance H9).

### Special requests:

- Upon request and for special quantities inserts can be supplied in different materials.
- Upon request and for special quantities available in the colours indicated in the chart (attention: reduced range [page 807]).



### Version L805: standard brass insert.

art.	A	B	H	m	c	d	d3	d1 <sub>H9</sub>	Q	
L80544.TD050113	44	16	22	8	14	14	10	5	15	9
L80544.TD060113	44	16	22	8	14	14	10	6	15	9
L80544.TD080113	44	16	22	8	14	14	10	8	15	10
L80552.TD050113	52	19	26	9.5	16.5	17	13	5	18	14
L80552.TD060113	52	19	26	9.5	16.5	17	13	6	18	14
L80552.TD080113	52	19	26	9.5	16.5	17	13	8	18	15
L80552.TD100113	52	19	26	9.5	16.5	17	13	10	18	16
L80567.TD060113	67	24	32.5	11	21.5	21	16	6	18	25
L80567.TD080113	67	24	32.5	11	21.5	21	16	8	18	25
L80567.TD100113	67	24	32.5	11	21.5	21	16	10	18	26
L80567.TD120113	67	24	32.5	11	21.5	21	16	12	18	26

### Version L805PIN: stainless steel insert (Aisi 303).

art.	A	B	H	m	c	d	d3	d1 <sub>H9</sub>	Q	
L80544.TD060113PIN	44	16	22	8	14	14	10	6	15	9
L80552.TD080113PIN	52	19	26	9.5	16.5	17	13	8	18	15
L80567.TD100113PIN	67	24	32.5	11	21.5	21	16	10	18	26

INOX

# L808



## “EUROMODEL” WING NUT WITH SMOOTH THROUGH BORE WITHOUT CAP

MODELLO DEPOSITATO

### Materials:

Reinforced polyamide.  
Resistant to oils and greases.

### Surface finish:

Satin.

### Colour:

Black (RAL 9011).

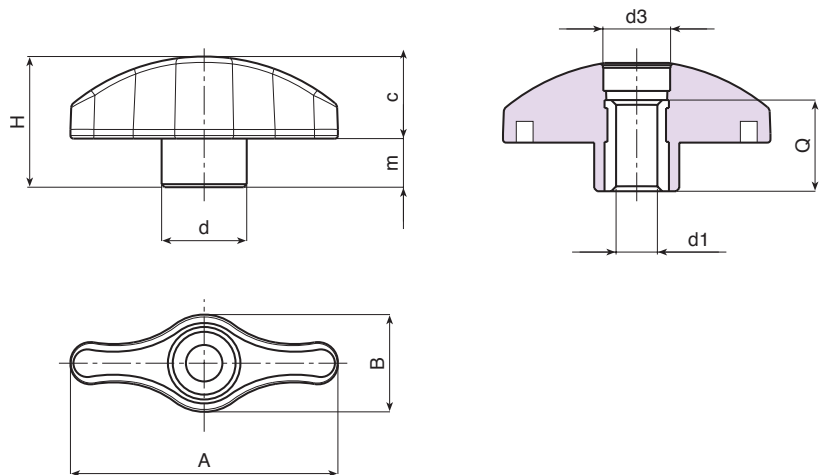
### Inserts:

**L808:**  
Brass insert with smooth through bore (bore tolerance H9).

**L808PIN:**  
Galvanised steel insert with smooth through bore (Aisi 303) (bore tolerance H9).

### Special requests:

- Upon request and for special quantities inserts can be supplied in different materials.
- Upon request and for special quantities available in the colours indicated in the chart (attention: reduced range) [page 807].



### Version L808: standard brass insert.

art.	A	B	H	m	c	d	d3	d1 <sub>H9</sub>	Q	g
L80844.TD0501	44	16	21.5	8	14	14	10	5	15	8
L80844.TD0601	44	16	21.5	8	14	14	10	6	15	8
L80844.TD0801	44	16	21.5	8	14	14	10	8	15	9
L80852.TD0501	52	19	25.5	9.5	16.5	17	13	5	18	13
L80852.TD0601	52	19	25.5	9.5	16.5	17	13	6	18	13
L80852.TD0801	52	19	25.5	9.5	16.5	17	13	8	18	14
L80852.TD1001	52	19	25.5	9.5	16.5	17	13	10	18	15
L80867.TD0601	67	24	32	11	21.5	21	16	6	18	24
L80867.TD0801	67	24	32	11	21.5	21	16	8	18	24
L80867.TD1001	67	24	32	11	21.5	21	16	10	18	25
L80867.TD1201	67	24	32	11	21.5	21	16	12	18	25

### Version L808PIN: stainless steel insert (Aisi 303).

art.	A	B	H	m	c	d	d3	d1 <sub>H9</sub>	Q	g
L80844.TD0601PIN	44	16	21.5	8	14	14	10	6	15	8
L80852.TD0801PIN	52	19	25.5	9.5	16.5	17	13	8	18	14
L80867.TD1001PIN	67	24	32	11	21.5	21	16	10	18	25

INOX

# L250CIN

## FULL STAINLESS STEEL WING NUT WITH FEMALE THREADED HOLE



INOX

**Materials:**

Precision-cast stainless steel, (Aisi 304).

**Surface finish:**

Satin.

**Colour:**

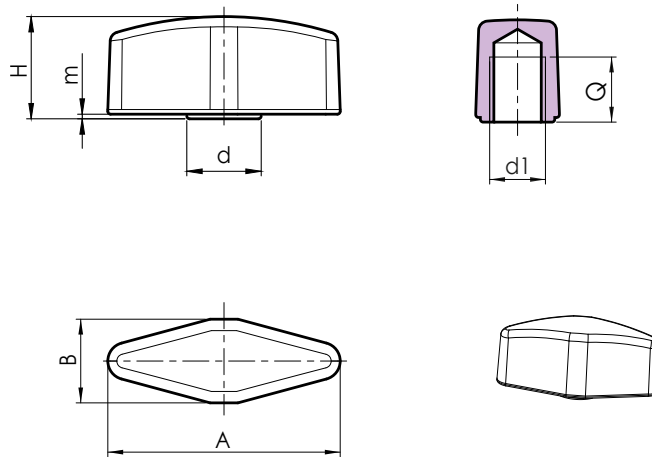
Natural

**Hole:**

Female threaded hole, obtained by further processing (thread tolerance 6H).

**Special Requests:**

- Upon request and for special quantities the wing nut can be supplied in Aisi 316 stainless steel.



Art.	A	B	H	m	d	d1 <sub>6H</sub>	Q	
L25025.HM06CIN	25	9	11	0,5	8	M6	6	8
L25030.HM08CIN	30	11	13.5	0,5	10	M8	8	16
L25036.HM10CIN	36	13	15.5	0,5	12	M10	9	27

# L251CIN

## FULL STAINLESS STEEL WING NUT WITH THREADED STUD



Aisi  
304

RoHS  
COMPLIANT

INOX

### Materials:

Precision-cast stainless steel, (Aisi 304).

### Surface finish:

Satin.

### Colour:

Natural

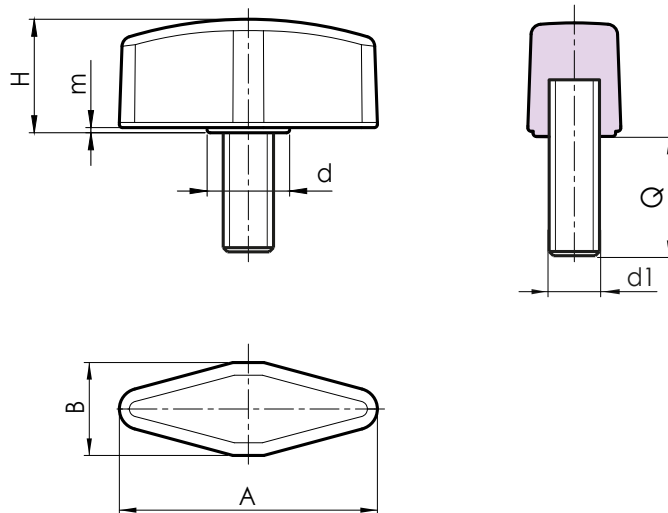
### Inserts:

Stainless steel threaded stud (Aisi 303) (thread tolerance 6g).

ATTENTION: The stud is fixed with glue.

### Special Requests:

- Upon request and for special quantities inserts can be supplied with customised lengths.
- Upon request and for special quantities the wing nut can be supplied in Aisi 316 stainless steel.



Art.	A	B	H	m	d	d1 <sub>6g</sub>	Q	g
L25125.HM06X..CIN	25	9	11	0,5	8	M6	16-20-25	11-12-13
L25130.HM08X..CIN	30	11	13,5	0,5	10	M8	16-20-25-32	22-24-26-29
L25136.HM10X..CIN	36	13	15,5	0,5	12	M10	20-30-40	41-46-50

Enter the selected stud length in place of the two dots . . in the item code. Customised stud length available for a minimum of 100 pieces.

# L750

## WING NUT WITH INSERT AND FEMALE THREADED HOLE



### Materials:

Reinforced polyamide.  
Resistant to oils and greases.

### Surface finish:

Satin.

### Colour:

Black (RAL 9011).

### Inserts:

#### L750:

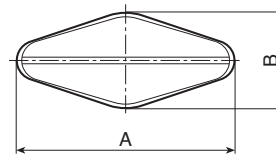
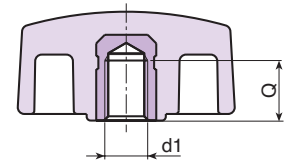
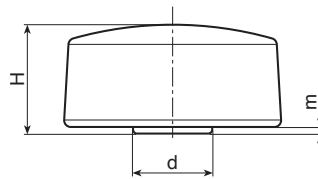
Brass insert with female threaded hole (thread tolerance 6H).

#### L750CIN:

Stainless steel insert with female threaded hole (Aisi 303) (thread tolerance 6H).

### Special Requests:

- Upon request and for special quantities available in the colours indicated in the chart [page 807].



### Version L750: brass insert.

Art.	A	B	H	m	d	d1 <sub>6H</sub>	Q	
L75032.TM0501	33	15	16.5	1	12	M5	7	7
L75032.TM0601	33	15	16.5	1	12	M6	7	6
L75032.TM0801	33	15	16.5	1	12	M8	7	6
L75048.TM0601	48	15	16	1	12.5	M6	7	10
L75048.TM0801	48	15	16	1	12.5	M8	7	10

### Version L750CIN: stainless steel insert (Aisi 303).



Art.	A	B	H	m	d	d1 <sub>6H</sub>	Q	
L75032.TM0501CIN	33	15	16.5	1	12	M5	7	9
L75032.TM0601CIN	33	15	16.5	1	12	M6	7	8
L75032.TM0801CIN	33	15	16.5	1	12	M8	7	8
L75048.TM0801CIN	48	15	16	1	12.5	M8	7	8





# L751

## WING NUT WITH THREADED STUD



### Materials:

Reinforced polyamide.  
Resistant to oils and greases.

### Surface finish:

Satin.

### Colour:

Black (RAL 9011).

### Inserts:

#### L751:

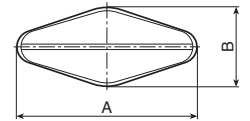
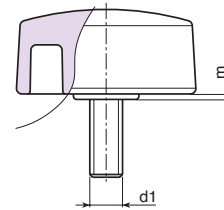
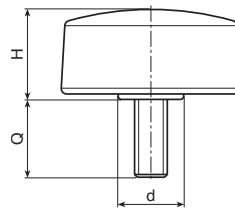
Galvanised steel threaded stud (thread tolerance 6g).

#### L751CIN:

Stainless steel threaded stud (Aisi 303) (thread tolerance 6g).

### Special Requests:

- Upon request and for special quantities inserts can be supplied with customised lengths.
- Upon request and for special quantities inserts can be supplied in different materials.
- Upon request and for special quantities available in the colours indicated in the chart (attention: reduced range) [page 807].



### Version L751: with threaded stud in galvanised steel.

Art.	A	B	H	m	d	LM	d1 <sub>6g</sub>	Q	g
L75132.TM05X..01	33	15	16.5	1	12	60	M5	16-25-30-40	8-9-11-15
L75132.TM06X..01	33	15	16.5	1	12	60	M6	10-16-20-25-30-40	9-11-12-12-12,5-15,5
L75132.TM08X..01	33	15	16.5	1	12	60	M8	10-16-20-25-30-40	13,5-14,5-16-17,5-19-22
L75148.TM06X..01	48	15	16	1	12.5	70	M6	10-16-20	13-15-16-17
L75148.TM08X..01	48	15	16	1	12.5	70	M8	16-20-25-30-40	18-20-21,5-23-27

Enter the selected stud length in place of the two dots . . in the item code.

A.R. = Upon request, for a minimum of 150 pieces.

LM = Maximum mouldable length.

### Version L751 CIN - stainless steel insert (Aisi 303).



Art.	A	B	H	m	d	LM	d1 <sub>6g</sub>	Q	g
L75132.TM05X..01CIN	33	15	16.5	1	12	60	M5	A.R.	-
L75132.TM06X..01CIN	33	15	16.5	1	12	60	M6	11-16-30	11-13-17
L75132.TM08X1601CIN	33	15	16.5	1	12	60	M8	16	15
L75148.TM06X..01CIN	48	15	16	1	12.5	70	M6	A.R.	-
L75148.TM08X..01CIN	48	15	16	1	12.5	70	M8	A.R.	-

Enter the selected stud length in place of the two dots . . in the item code.

A.R. = Upon request, for a minimum of 250 pieces.

LM = Maximum mouldable length.



Stock availability as % (🛒)  
90% (●) - 40% (●) - 5% (●)

# L754

+135°  
-30°

PA6  
+G.F.

UL94  
HB

RoHS  
COMPLIANT

## LARGE WING NUT WITH THREADED HOLE INSERT

### Materials:

Reinforced polyamide.  
Resistant to oils and greases.

### Surface finish:

Satin.

### Colour:

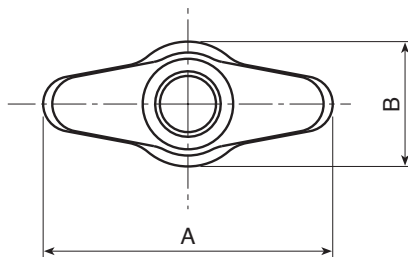
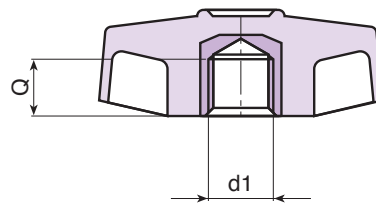
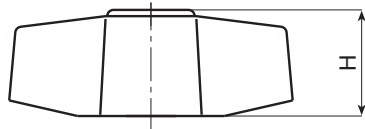
Black (RAL 9011).

### Inserts:

Brass insert with female threaded hole (thread tolerance 6H).

### Special Requests:

- Upon request and for special quantities inserts can be supplied in different materials.
- Upon request and for special quantities available in the colours indicated in the chart [page 807].



Art.	A	B	H	d1 <sup>6H</sup>	Q	g
L75448.TM0601	45	20	17	M6	7	11
L75448.TM0801	45	20	17	M8	7	11
L75448.TM1001	45	20	17	M10	6	12

# L755



## LARGE WING NUT WITH INSERT AND THREADED THROUGH HOLE

### Materials:

Reinforced polyamide.  
Resistant to oils and greases.

### Surface finish:

Satin.

### Colour:

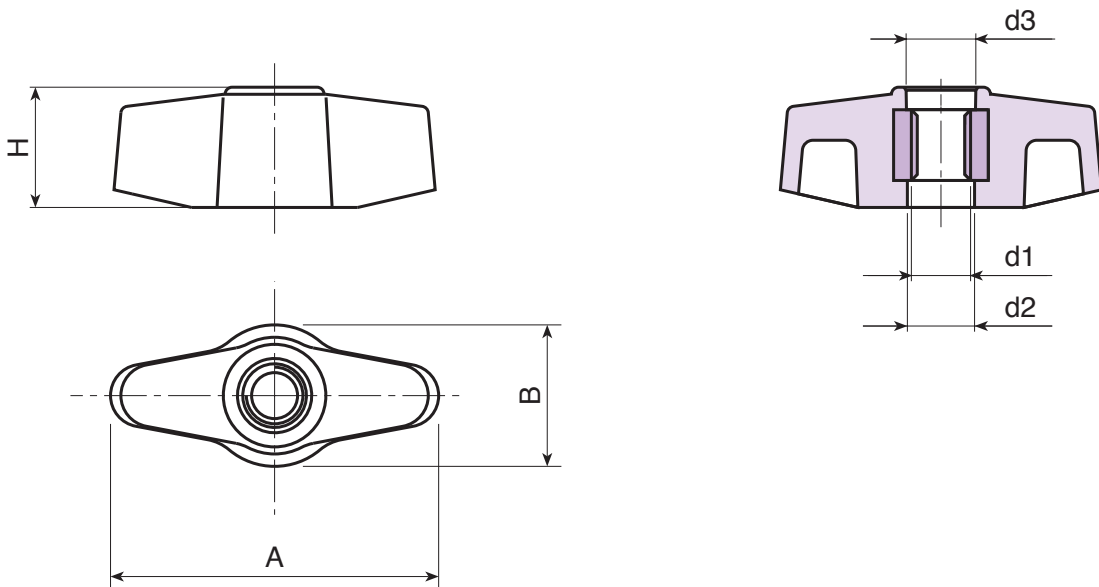
Black (RAL 9011).

### Inserts:

Brass insert with female threaded hole (thread tolerance 6H).

### Special Requests:

- Upon request and for special quantities inserts can be supplied in different materials.
- Upon request and for special quantities available in the colours indicated in the chart (attention: reduced range) [page 807].



Art.	A	B	H	d2	d3	d1 <sub>6H</sub>	g
L75548.TM0601	45	20	17	9.5	10	M6	17
L75548.TM0801	45	20	17	9.5	10	M8	16

# L756

## LARGE WING NUT WITH THREADED STUD



### Materials:

Reinforced polyamide.  
Resistant to oils and greases.

### Surface finish:

Satin.

### Colour:

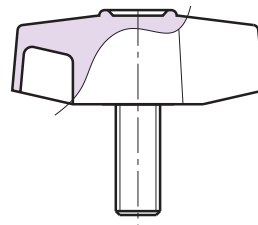
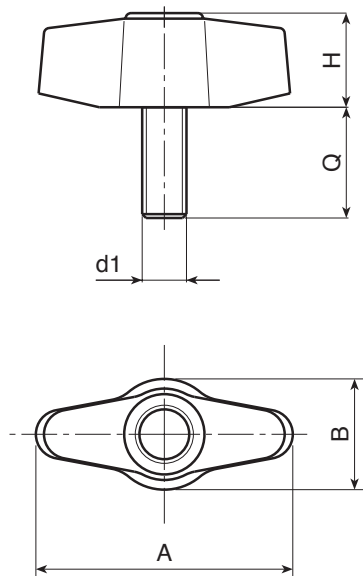
Black (RAL 9011).

### Inserts:

Galvanised steel threaded stud (thread tolerance 6g).

### Special Requests:

- Upon request and for special quantities inserts can be supplied with customised lengths.
- Upon request and for special quantities inserts can be supplied in different materials.
- Upon request and for special quantities available in the colours indicated in the chart [page 807].



Art.	A	B	H	LM	d1 <sup>6g</sup>	Q	
L75648.TM06X..01	45	20	17	50	M6	16-20	14,5-15
L75648.TM08X..01	45	20	17	50	M8	16-20-25-30-35-	17-18,5-20-21,5-23-26
L75648.TM10X..01	45	20	17	50	M10	20-25-30	26-28,5-30

Enter the selected stud length in place of the two dots . . in the item code. Customised stud length available for a minimum of 150 pieces.

LM = Maximum mouldable length.



# L747



## 28 mm WING NUT WITH WITH THREADED HOLE INSERT

### Materials:

Reinforced polyamide.  
Resistant to oils and greases.

### Surface finish:

Satin.

### Colour:

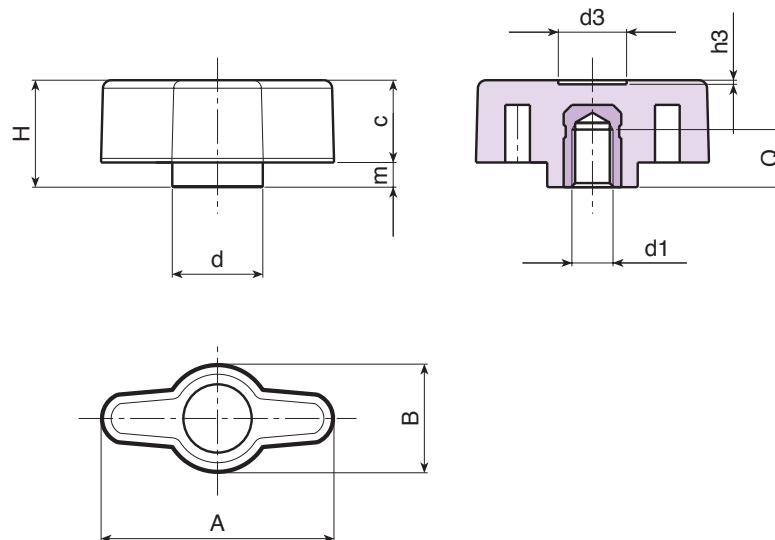
Black (RAL 9011).

### Inserts:

Brass insert with female threaded hole (thread tolerance 6H).

### Special Requests:

- Upon request and for special quantities inserts can be supplied in different materials.
- Upon request and for special quantities available in the colours indicated in the chart [page 807].



Art.	A	B	H	m	c	d	d3	h3	d1 <sub>6H</sub>	Q	g
L74728.TM0401	28	13	13	3	10	11	8	0.5	M4	8	4
L74728.TM0501	28	13	13	3	10	11	8	0.5	M5	8	5
L74728.TM0601	28	13	13	3	10	11	8	0.5	M6	8	6

# L748



## 28 mm WING NUT WITH WITH INSERT AND THREADED THROUGH HOLE

### Materials:

Reinforced polyamide.  
Resistant to oils and greases.

### Surface finish:

Satin.

### Colour:

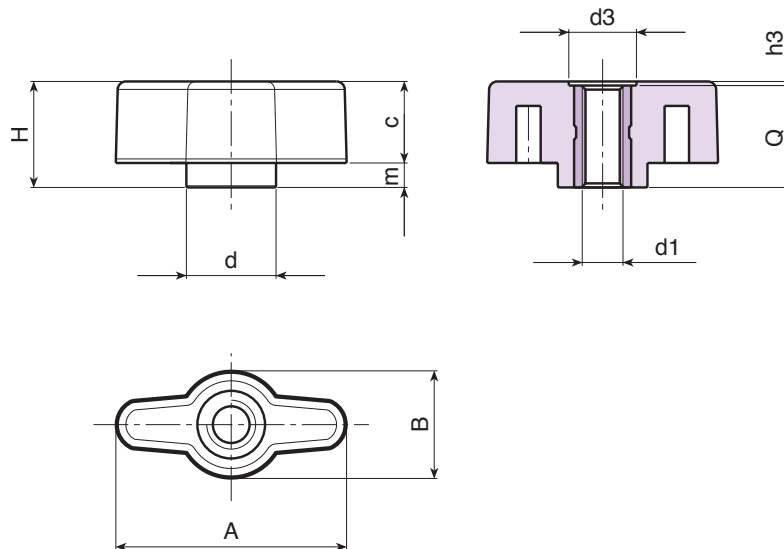
Black (RAL 9011).

### Inserts:

Brass insert with threaded through hole (thread tolerance 6H).

### Special Requests:

- Upon request and for special quantities inserts can be supplied in different materials.
- Upon request and for special quantities available in the colours indicated in the chart [page 807].



Art.	A	B	H	m	c	d	d3	h3	d1 <sub>6H</sub>	Q	g
L74828.TM0401	28	13	13	3	10	11	8	0.5	M4	12.5	5
L74828.TM0501	28	13	13	3	10	11	8	0.5	M5	12.5	5
L74828.TM0601	28	13	13	3	10	11	8	0.5	M6	12.5	6

# L749

## 28 mm WING NUT WITH THREADED STUD



### Materials:

Reinforced polyamide.  
Resistant to oils and greases.

### Surface finish:

Satin.

### Colour:

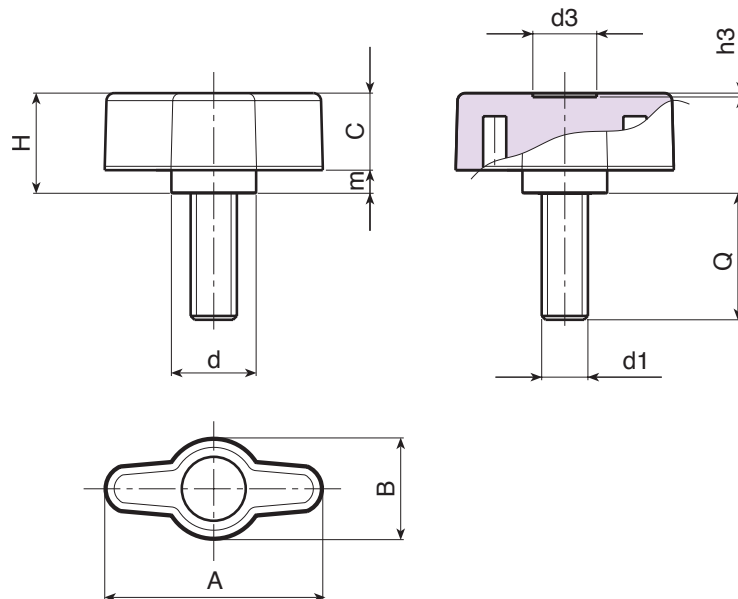
Black (RAL 9011).

### Inserts:

Galvanised steel threaded stud (thread tolerance 6g).

### Special Requests:

- Upon request and for special quantities inserts can be supplied with customised lengths.
- Upon request and for special quantities inserts can be supplied in different materials.
- Upon request and for special quantities available in the colours indicated in the chart (attention: reduced range) [page 807].



Art.	A	B	H	m	c	d	d3	h3	LM	d1 <sub>6g</sub>	Q	g
L74928.TM04X..01	28	13	13	3	10	11	8	0.5	75	M4	A.R.	-
L74928.TM05X..01	28	13	13	3	10	11	8	0.5	75	M5	A.R.	-
L74928.TM06X4001	28	13	13	3	10	11	8	0.5	75	M6	40	11

Enter the selected stud length in place of the two dots .. in the item code.

A.R. = Upon request, for a minimum of 300 pieces.

LM = Maximum mouldable length.



Stock availability as % (🛒)  
90% (●) - 40% (●) - 5% (●)



Embrace  
**COST-EFFECTIVENESS**

---

[www.boteco.com](http://www.boteco.com)



**BOTECO**<sup>®</sup>  
YOUR MECHANICAL COMPONENT