



BOTECO®

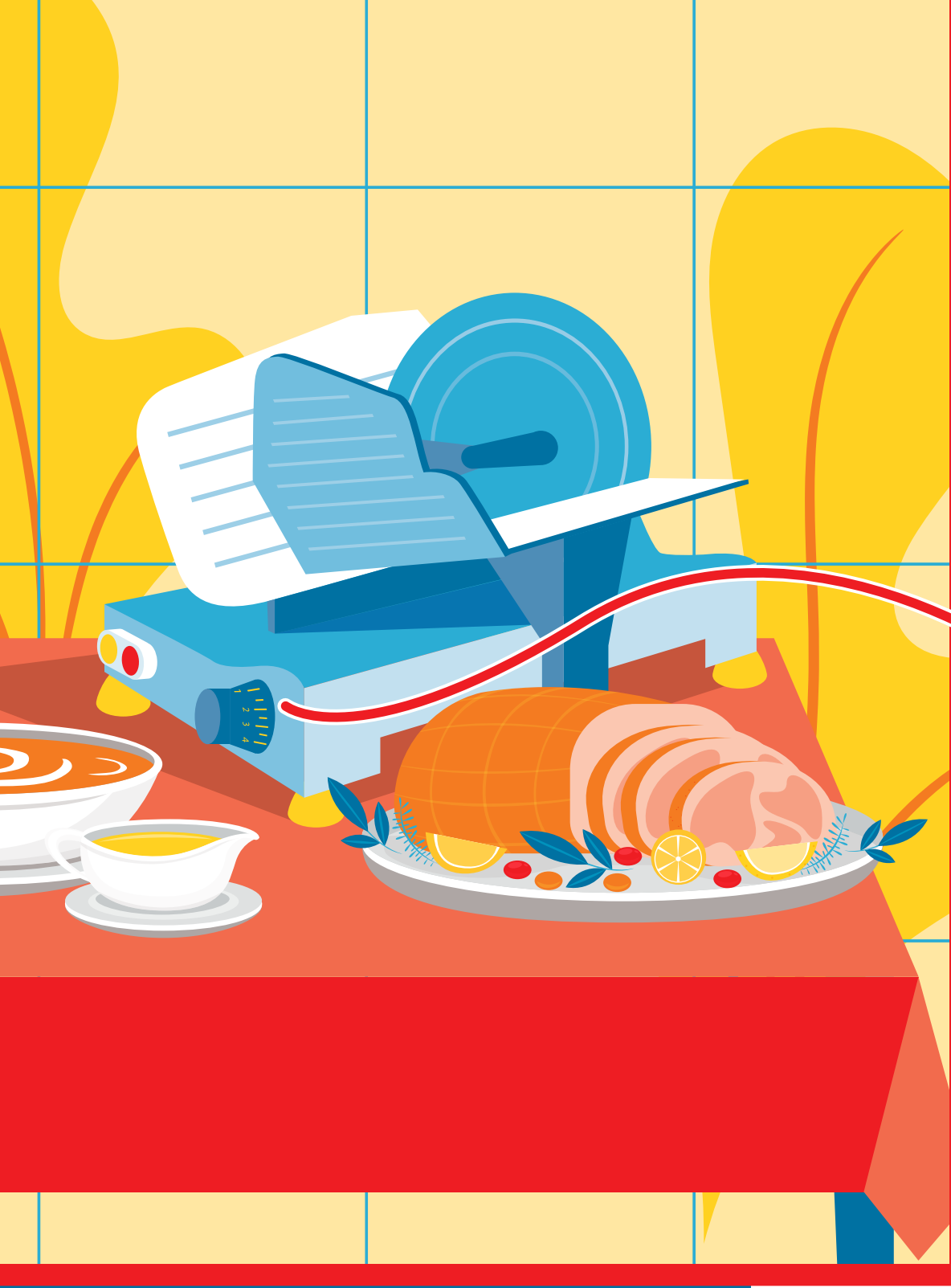
YOUR MECHANICAL COMPONENT

GROUP - N

KONTROL KNOBS



CONTR
KNOB
FOR ALL



BOTECO[®]
YOUR MECHANICAL COMPONENT

N240

CONTROL KNOB WITH METAL INSERT AND THROUGH HOLE



Materials:

Reinforced polyamide.
Resistant to oils and greases.

Surface finish:

Satin.

Colour:

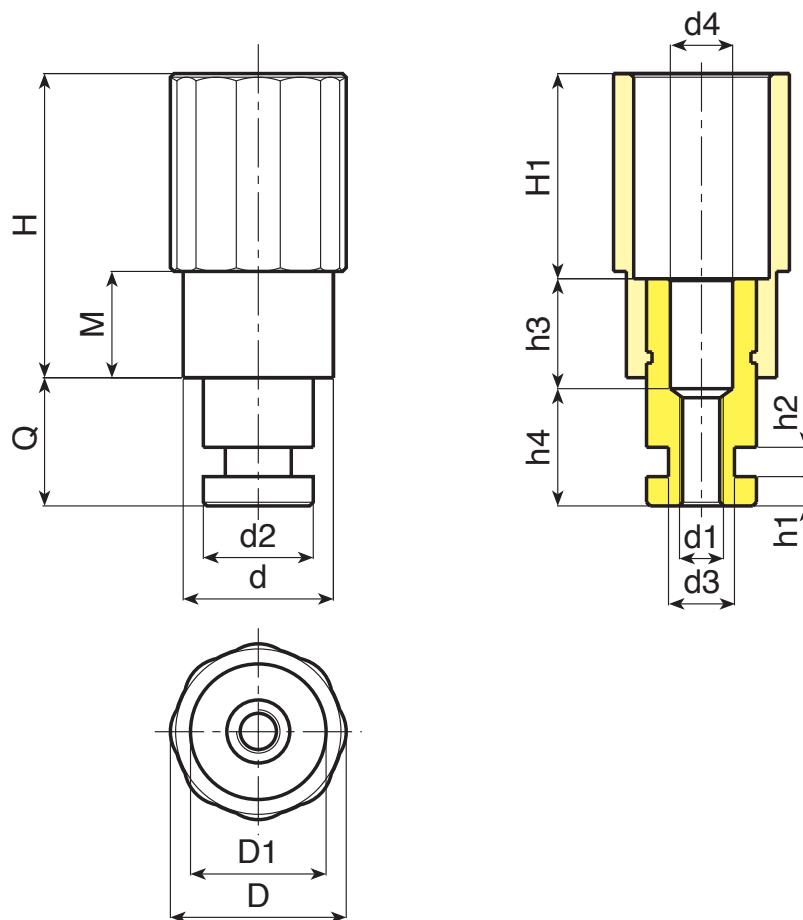
Black (RAL 9011).

Inserts:

Galvanised steel insert with threaded through hole and empty body top (6H thread tolerance).

Special requests:

- None.



🛒	Art.	D	D1	d	H	H1	M	Q	d2	d1	d3	d4	h1	h2	h3	h4	📦
-	N24040.T.....01	39	21	32	63	33	12	25÷40	20	A.R.	A.R.	A.R.	A.R.	A.R.	A.R.	A.R.	-
-	N24050.T.....01	48	36	41	83	55	29	25÷40	28÷30	A.R.	A.R.	A.R.	A.R.	A.R.	A.R.	A.R.	-

A.R. = Only upon customer's request. Minimum of 200 pieces.

N244

CONTROL KNOB WITH METAL INSERT AND THROUGH HOLE



Materials:

Reinforced polyamide.
Resistant to oils and greases.

Surface finish:

Satin.

Colour:

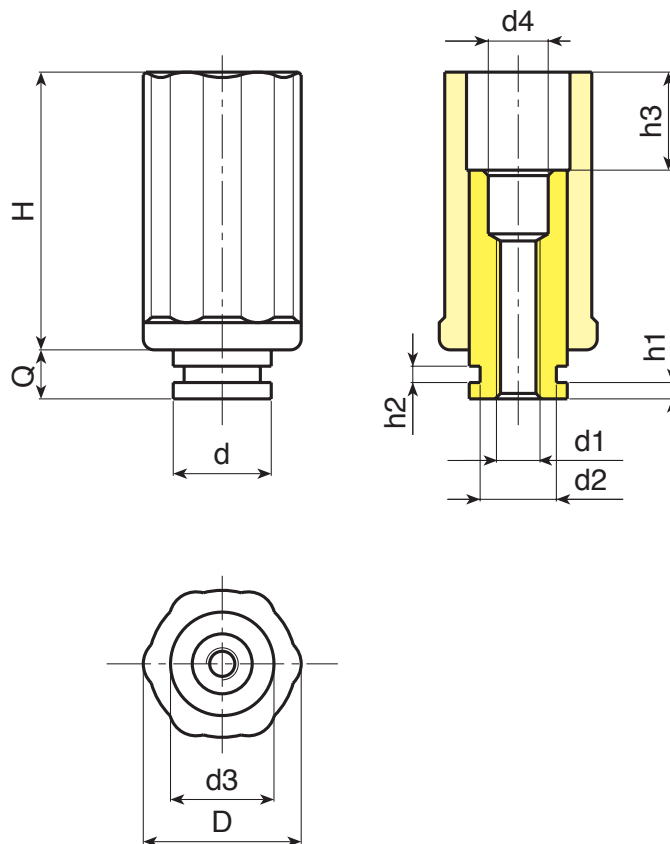
Black (RAL 9011).

Inserts:

Galvanised steel insert with threaded through hole and empty body top (6H thread tolerance).

Special requests:

- None.



🛒	Art.	D	H	d3	h3	Q	d	d1	d2	d4	h1	h2	📏
●	N24430.T.....	30	21	32	63	33	12	25÷40	20	A.R.	A.R.	A.R.	-
●	N24450.T.....	50	36	41	83	55	29	25÷40	28÷30	A.R.	A.R.	A.R.	-

A.R. = Only upon customer's request. Minimum of 200 pieces.



N241



CONTROL KNOB WITH CAP AND THREADED HOLE INSERT

Materials:

Reinforced polyamide.
Resistant to oils and greases.

Surface finish:

Satin.

Colour:

Black (RAL 9011).

Cap:

Central cap in grey polyamide (RAL 7035).

Alternative cap colours:

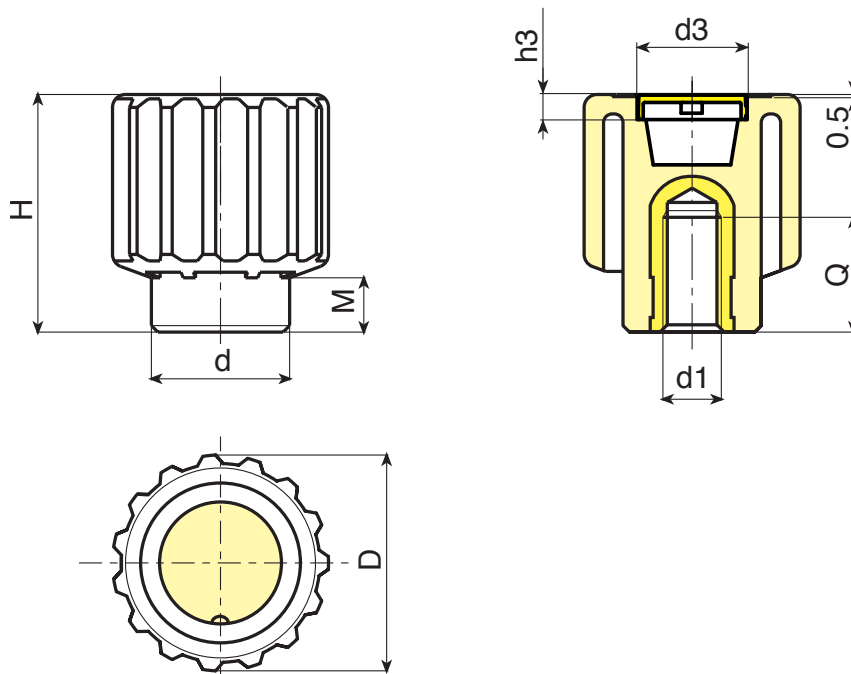
Orange (RAL 2004 cod. 02).
Blue (RAL 5015 cod. 07).
Yellow (RAL 1021 cod. 10).
Red (RAL 3000 cod. 16).
Green (RAL 6024 cod. 17).
Black (RAL 9011 cod. 01).

Inserts:

Brass insert with female threaded hole (thread tolerance 6H).
(* Galvanised steel insert with female threaded hole (thread tolerance 6H).

Special requests:

- Upon request and for special quantities inserts can be supplied in different materials.
- Upon request and for special quantities available in the colours indicated in the chart (attention: reduced range) [page 807].



🛒	Art.	D	H	M	d	d3	h3	d1 _{6H}	Q	📦
●	N24150.TM0801	49	55	13	32	34	5	M8	20	72
●	N24150.TM1001	49	55	13	32	34	5	M10	18	72
●	N24150.TM1201	49	55	13	32	34	5	M12	18	73
●	N24150.TM1401	49	55	13	32	34	5	M14	18	74
●	N24150.TM1601	49	55	13	32	34	5	M16(*)	18	77

N740

KNURLED CONTROL KNOB WITH THREADED HOLE INSERT

+135°
-30°

PA6
+G.F.

UL94
HB

RoHS
COMPLIANT

Materials:

Reinforced polyamide.
Resistant to oils and greases.

Surface finish:

Satin.

Colour:

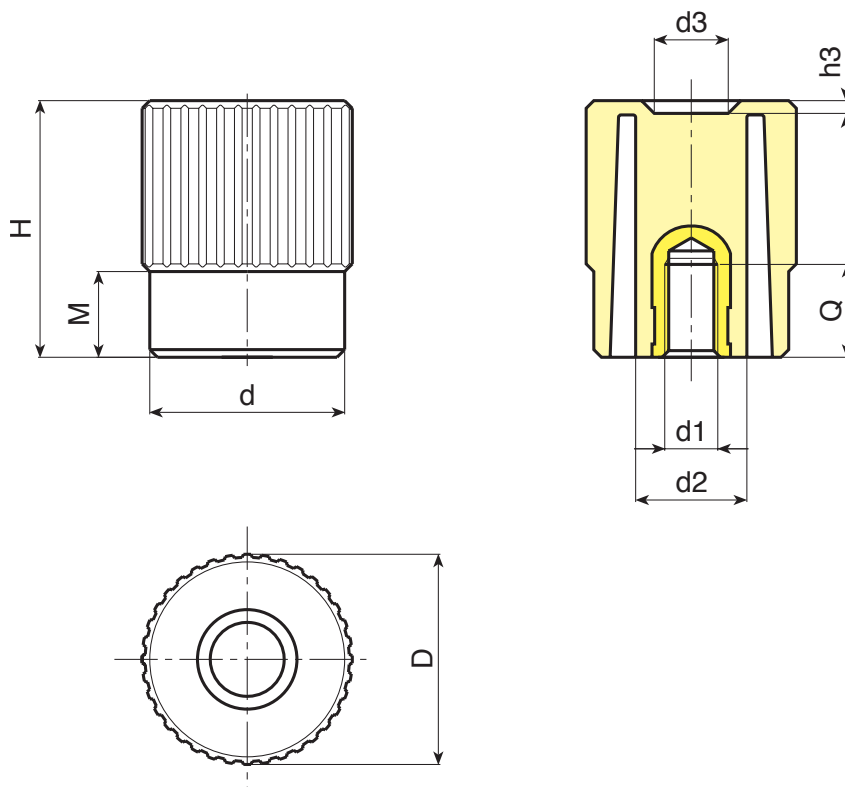
Black (RAL 9011).

Inserts:

Brass insert with female threaded hole (thread tolerance 6H).

Special requests:

- Upon request and for special quantities inserts can be supplied in different materials.
- Upon request and for special quantities available in the colours indicated in the chart (attention: reduced range) [page 807].



🛒	Art.	D	H	M	d	d2	d3	h3	d1 _{6H}	Q	📦
●	N74040.TM0801	41	51	16.5	38	22	14.5	2	M8	20	60
●	N74040.TM1001	41	51	16.5	38	22	14.5	2	M10	18	61
●	N74040.TM1201	41	51	16.5	38	22	14.5	2	M12	18	62
●	N74040.TM1401	41	51	16.5	38	22	14.5	2	M14	18	63

N741

KNURLED CONTROL KNOB WITH THREADED STUD



Materials:

Reinforced polyamide.
Resistant to oils and greases.

Surface finish:

Satin.

Colour:

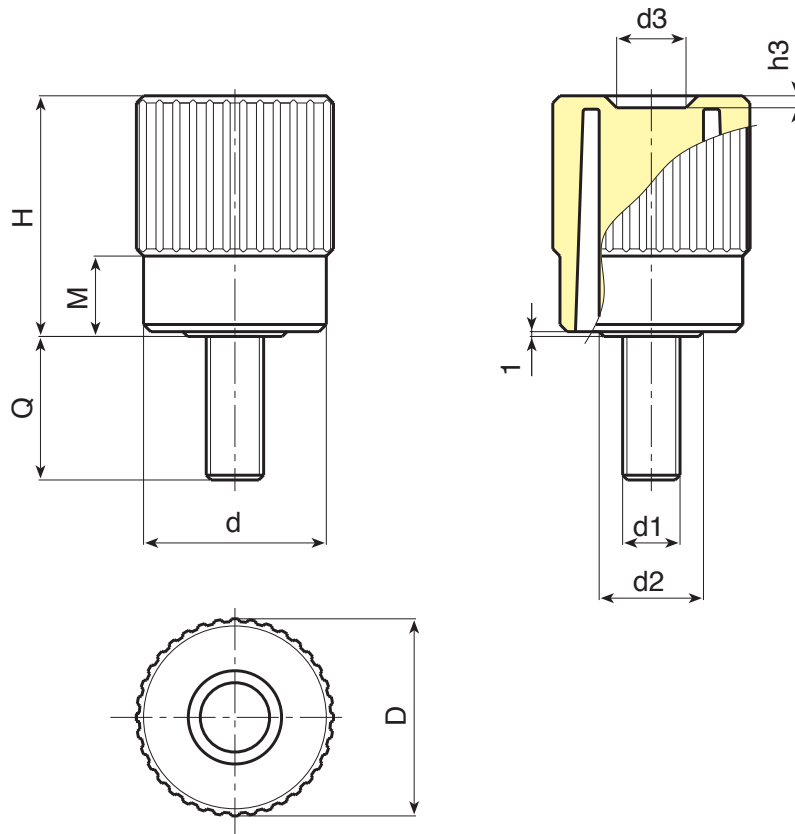
Black (RAL 9011).

Inserts:

Galvanised steel threaded stud (thread tolerance 6g).

Special requests:

- Upon request and for special quantities inserts can be supplied with customised lengths.
- Upon request and for special quantities inserts can be supplied in different materials.
- Upon request and for special quantities available in the colours indicated in the chart (attention: reduced range) [page 807].



🛒	Art.	D	H	M	d	d2	d3	h3	LM	d1 _{6g}	Q	📦
●	N74140.TM10X..01	41	51	16.5	38	22	14.5	2	90	M10	A.R.	-
●	N74140.TM12X..01	41	51	16.5	38	22	14.5	2	90	M12	A.R.	-
●	N74140.TM14X2001	41	51	16.5	38	22	14.5	2	90	M14	20	100

Enter the selected stud length in place of the two dots . . in the item code. Customised stud length available for a minimum of 250 pieces.

A.R. = Upon request, for a minimum of 250 pieces.

LM = Maximum mouldable length.



Stock availability as % (🛒)
90% (●) - 40% (●) - 5% (●)

N742

KNURLED KNOB WITH INSERT WITH SMOOTH HOLE

+135°
-30°

PA6
+G.F.

UL94
HB

RoHS
COMPLIANT

Materials:

Reinforced polyamide.
Resistant to oils and greases.

Surface finish:

Satin.

Colour:

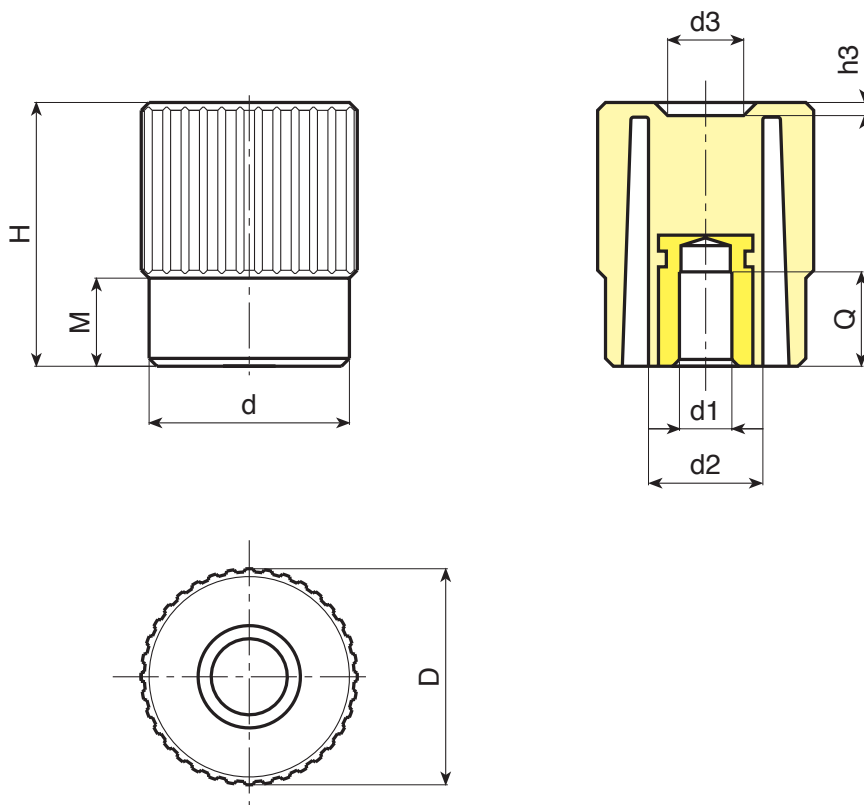
Black (RAL 9011).

Inserts:

Galvanised steel insert with blind smooth bore (bore tolerance H10).

Special requests:

- Upon request and for special quantities inserts can be supplied with custom hole diameter $d1$.
- Upon request and for special quantities inserts can be supplied in different materials/with different coatings.
- Upon request and for special quantities available in the colours indicated in the chart [page 807].



Art.	D	H	M	d	d2	d3	h3	Dm	d1 _{H10}	Q	g
N74240.TP0501	41	51	16.5	38	22	14.5	2	12	5	20	90
N74240.TD1001	41	51	16.5	38	22	14.5	2	12	10	20	80

Attention: For a minimum of 100 pieces the diameter $d1$ can be produced with the requested diameter with H10 tolerance.
Dm = Maximum obtainable diameter for subsequent machining. (widening)



N775



4-LOBE CONTROL KNOB WITH THREADED HOLE INSERT

Materials:

Reinforced polyamide.
Resistant to oils and greases.

Surface finish:

Satin.

Colour:

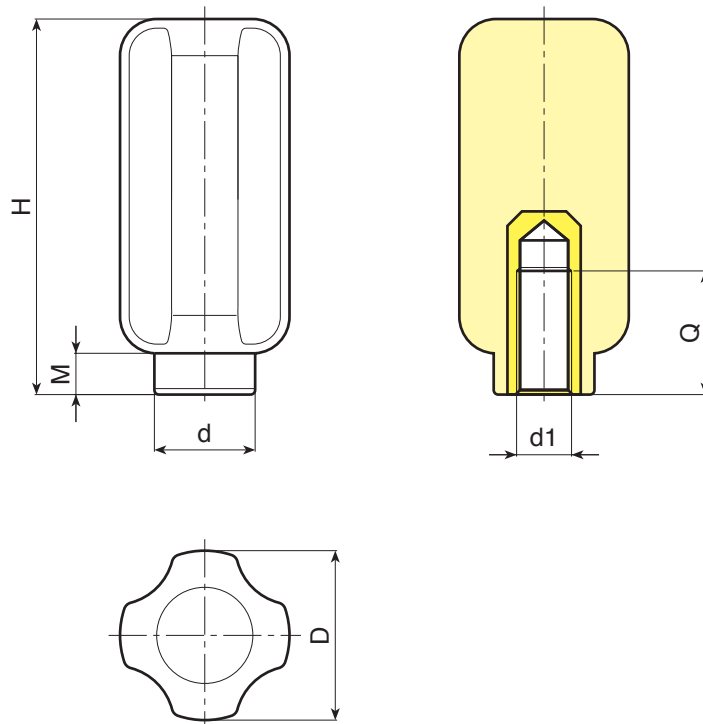
Black (RAL 9011).

Inserts:

Galvanised steel insert with female threaded hole (thread tolerance 6H).

Special requests:

- Upon request and for special quantities inserts can be supplied in different materials.



🛒	Art.	D	H	M	d	d1 _{6H}	Q	📦
●	N77538.TM0801	37	81	9	22	M8	20	94
●	N77538.TM1001	37	81	9	22	M10	20	128
●	N77538.TM1201	37	81	9	22	M12	27	120
●	N77538.TM1401	37	81	9	22	M14	27	116
●	N77538.TM1601	37	81	9	22	M16	16	110

N776

4-LOBE CONTROL KNOB WITH THREADED STUD

+135°
-30°

PA6
+G.F.

UL94
HB

RoHS
COMPLIANT

Materials:

Reinforced polyamide.
Resistant to oils and greases.

Surface finish:

Satin.

Colour:

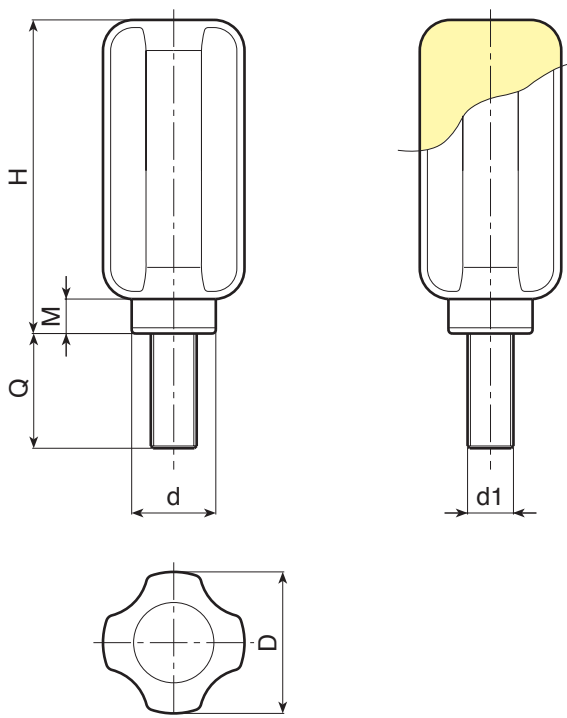
Black (RAL 9011).

Inserts:

Galvanised steel threaded stud (thread tolerance 6g).

Special requests:

- Upon request and for special quantities inserts can be supplied with customised lengths.
- Upon request and for special quantities inserts can be supplied in different materials.



🛒	Art.	D	H	M	d	LM	d1 _{6g}	Q	📦
●	N77638.TM08X..01	37	81	9	22	130	M8	A.R.	-
●	N77638.TM10X..01	37	81	9	22	130	M10	A.R.	-
●	N77638.TM12X3001	37	81	9	22	130	M12	30	135

Enter the selected stud length in place of the two dots .. in the item code.

A.R. = Upon request, for a minimum of 250 pieces.

LM = Maximum mouldable length.



N777



4-LOBE CONTROL KNOB WITH SMOOTH BORE INSERT

Materials:

Reinforced polyamide.
Resistant to oils and greases.

Surface finish:

Satin.

Colour:

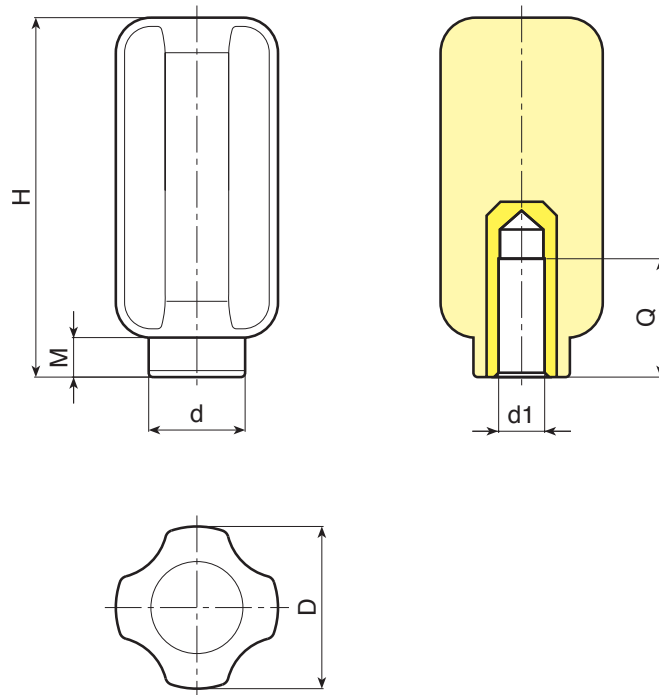
Black (RAL 9011).

Inserts:

Galvanised steel insert with blind smooth bore (bore tolerance H10).

Special requests:

- Upon request and for special quantities inserts can be supplied with custom hole diameter $d1$.
- Upon request and for special quantities inserts can be supplied in different materials/with different coatings.



🛒	Art.	D	H	M	d	Dm	d1 _{H10}	Q	📦
●	N77738.TD0801	37	81	9	22	12	8	20	108
●	N77738.TD1201	37	81	9	22	12	12	15	130

Attention: For a minimum of 100 pieces the diameter $d1$ can be produced with the requested diameter with H10 tolerance.
Dm = Maximum obtainable diameter for subsequent machining (widening).

N280

KNURLED INDEXING KNOB WITH STEPLESS POSITIONING



PA6
+G.F.

UL94
HB



Materials:

1. Stainless steel (AISI 304) fixing base with friction device seat and fixing holes.
2. Aluminium graduated flange (alloy 2011).
3. Reinforced polyamide control knob. Resistant to oils and greases.
5. PA6 cap.
6. Stainless steel fastening cap with hexagon socket (Aisi 303).
7. Fastening snap ring in stainless steel (UNI 3653).
8. Stainless steel (AISI 304) lock and friction mechanism.
10. Stainless steel self-tapping screws (AISI 303) TCS 2.9x13 for fastening the flange.

Surface finish:

- 1-6-7-8. Glossy.
2. Anodized.
- 3-5. Satin.

Colour:

1. Natural with engraved arrow.
2. Anodized black.
3. Black (RAL 9011).
5. Grey (RAL 7035 code 13).
7. Black-oxide treated.
- 6-8. Natural.

Fastening to the machine:

Fixed to the machine with 3 x M05 hex socket head cap screws (number 9 in the drawing) (DIN 912).

Graduated flange:

The standard numbering of the flange goes from 0 to 9 with 10 graduations for each unit. (100 graduations). Specific custom graduations are available for a minimum quantity of 30 pieces.

Coupling of the shaft to the knob:

The shaft is coupled to the knob by means of a shaft with keyway. Attention! The key, for technical reasons, is small in size. See attached diagram for bore/shaft dimensions.

Hole:

The shaft hole is machined to H7 tolerance. Side fixing hole is not required. The diameter of the hole is fixed and cannot be varied.

Special requests:

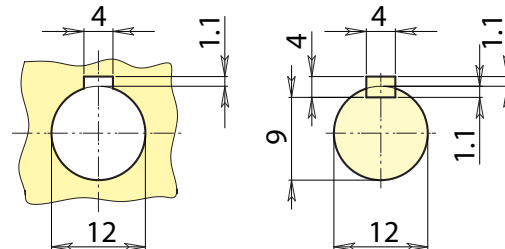
- Central cap available upon request in the colours indicated in the chart on [page 807].
- The flange with customised numbering is available upon request and for special quantities (30 pieces).

Features:

The main feature of this item is the possibility to continually adjust the axis of the machine to which it is coupled and to maintain the selected position. The special friction device, the heart of the mechanism, allows you to make very small, continuous movements and therefore enables fine tuning in both directions. After reaching the desired position, the friction device prevents rotation by any minor shaft-induced vibrations or movements. This system prevents accidental or involuntary rotations of the shaft.

Limitations:

If the vibrations are strong the friction device is not sufficient to block any movements. Moreover, the knob cannot support the weight of the shaft, consequently it does not replace the normal support systems (bearings, flanges, etc.). The knob cannot be installed if there is a motor drive present.



Lowered key in compliance with DIN 6885-2

N280

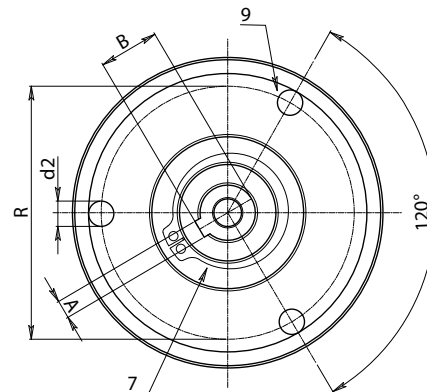
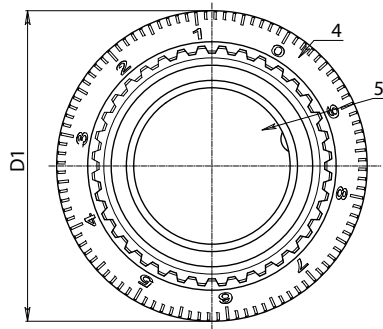
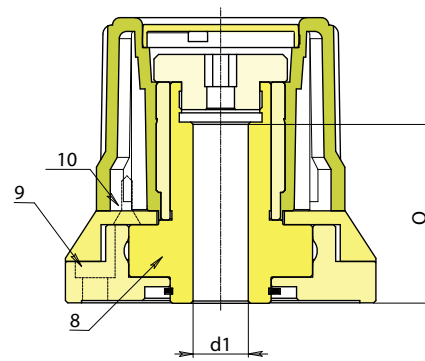
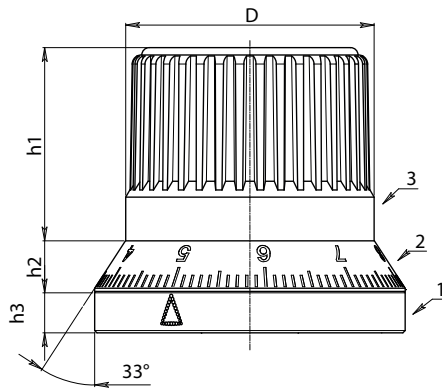
KNURLED INDEXING KNOB WITH STEPLESS POSITIONING

+135°
-30°

PA6
+G.F.

UL94
HB

RoHS
COMPLIANT



Art.	D	D1	h1	h2	h3	R	d2	A	B	d1H7	Q
N28054.HNZ1000113CIN	54	67.5	42	11	9	55	5.5	4	13.1	12	39



Stock availability as % (🛒)
90% (●) - 40% (●) - 5% (●)

N282



KNURLED INDEXING KNOB WITH STEPLESS POSITIONING AND LOCKING ACTION

Materials:

1. Hardened steel C45 base with fixing holes.
2. Aluminium (alloy 2011) flange with laser engraved numbers.
3. Reinforced polyamide control knob. Resistant to oils and greases.
4. Stainless steel fastening cap with hexagon socket (Aisi 303).
5. PA6 cap.
6. Fastening snap ring in stainless steel (UNI 653).
7. High resistance tempered and hardened steel rotating cam shaft, with through hole and key.
8. Stainless steel knob insert (Aisi 303).
10. Stainless steel (Aisi 303) self-tapping screws TCS 2.9x19 for fastening the bush.
11. Aluminium (alloy 2011) turned unlocking pin holder bush.
12. Stainless steel (Aisi 302) pressure spring.
13. Hardened stainless steel locking roller (Aisi 52100 grade G2).
14. 2 turned stainless steel unlocking pins (Aisi 303).
15. Steel fixing screw M03x8 DIN 5933 for aluminium flange.

Surface finish:

- 1-2-4-7-8. Glossy.
- 3-5. Satin.

Colour:

1. Black-oxide treated.
2. Anodized black.
3. Black (RAL 9011).
- 4-7. Natural.

Fastening to the machine:

Fixed to the machine with 3 x M05 hex socket head cap screws (number 9 in the drawing) (DIN 912).

Hole:

The shaft hole is machined to H7 tolerance. Side fixing hole is not required. The diameter of the hole is fixed and cannot be varied.

Coupling of the shaft to the knob:

The shaft is coupled to the knob by means of a shaft with keyway. Attention! The key, for technical reasons, is small in size. See attached diagram for bore/shaft dimensions.

Graduated flange:

The flange is available in two versions:

Z1

The standard numbering of the flange goes from 0 to 9 with 10 graduations for each unit. (100 graduations).

Z2

Vertical line without numbers.

Attention!

Select the rotation direction (O= clockwise A=counter clockwise).

Special requests:

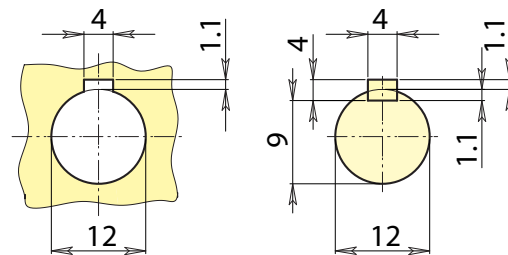
- Central cap available upon request in the colours indicated in the chart on [page 807].
- The flange with customised numbering is available upon request and for special quantities (50 pieces).

Limitations:

The knob is not capable of supporting the weight of the shaft to which it is coupled; consequently it does not replace the normal support systems (bearings, flanges, etc.).

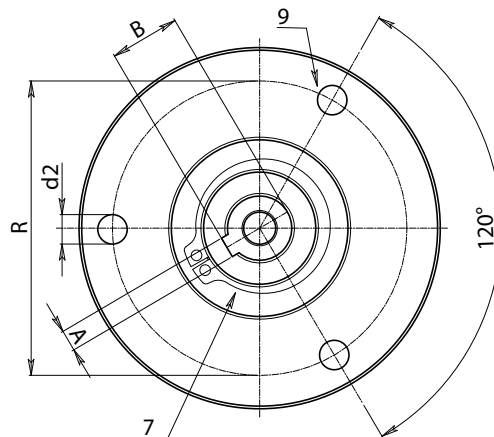
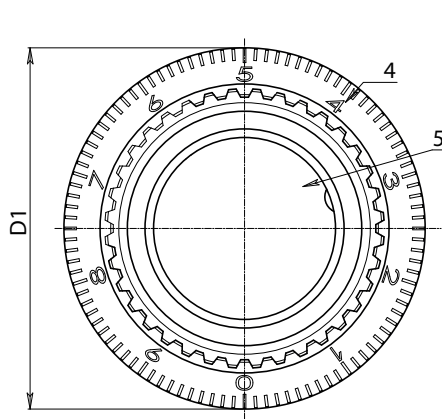
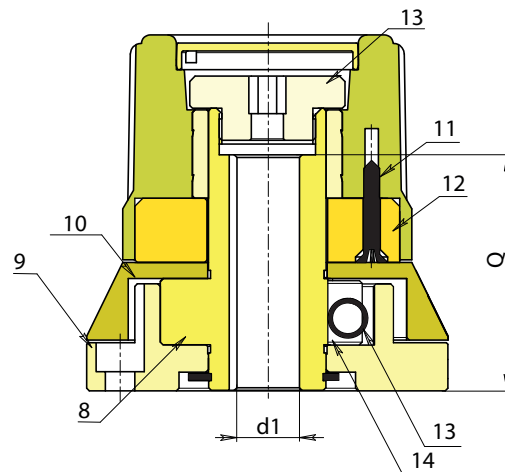
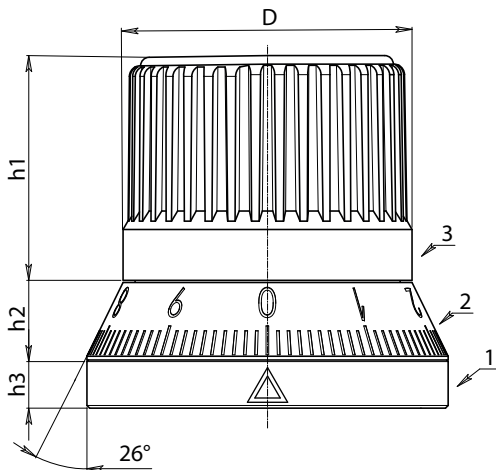
The knob cannot be installed if there is a motor drive present.

Lowered key in compliance with DIN 6885-2



N282

KNURLED INDEXING KNOB WITH STEPLESS POSITIONING AND LOCKING ACTION



Art.	D	D1	h1	h2	h3	R	d2	A	B	d1H7	Q	g
N282054.SBZ2001001Z1	54	67.5	42	14.5	9	55	5.5	4	13.1	12	44	600

N290



STAINLESS STEEL INDEXED CONTROL KNOB WITH HANDLE

Material:

5. Reinforced polyamide handle. Resistant to oils and greases (M138).

1. Turned fixing cap in stainless steel (Aisi 303) with hexagon for key.

2. Turned knob body in stainless steel (Aisi 303) with 60-position tothing (6° indexing).

3. Stainless steel spring (Aisi 302).

4. Fixing base in stainless steel (Aisi 303) with 60-position tothing.

6. Fastening snap ring in stainless steel, (Aisi 420) DIN 471.

7. Turned handle holder stem in stainless steel, (Aisi 303).

8. Turned bush with hole and key to connect to the shaft, in stainless steel (Aisi 303) and 60-position tothing.



Surface finish:

5. Satin.

1-2-4-7-8. Turned with low roughness.

Colour:

5. Black (RAL 9011).

1-2-4-7-8. Natural.

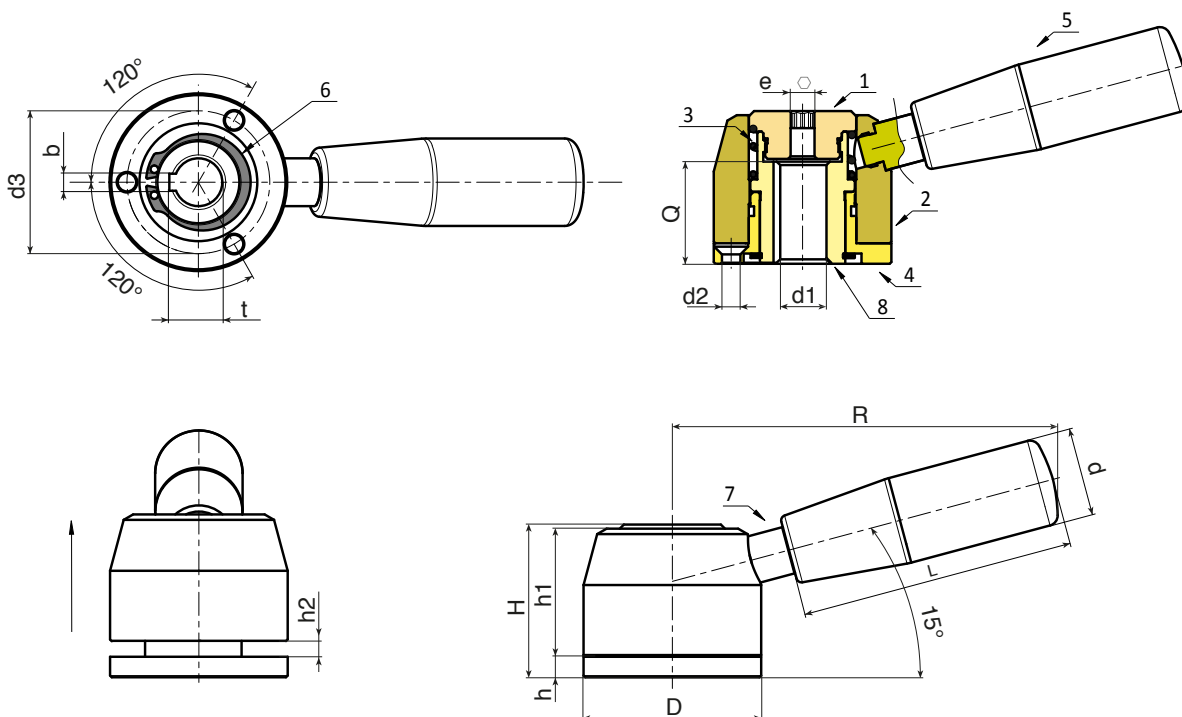
Fastening to the machine:

First of all, the knob must be dismantled, unscrewing the cap (1) and removing the spring and knob body. Then secure the base (4) to the equipment by means of the three M5 countersunk head screws UNI 5933 (not supplied), after first inserting the shaft in hole d1 and then inserting the key. Then re-assemble the knob body (2), the spring (3) and tighten everything through cap (1).



Special requests:

- Upon request and for special quantities the knob can be supplied in different materials.
- Upon request and for special quantities a graduated scale can be engraved on the cylindrical side of the knob body.



Art.	D	h	h1	h2	R	R	d	L	d2	e	d3	bH9	d1H7	Q
N29052.IND14CIN	52	6	37.5	5	111	111	25.5	80	5.5	5	41.8	5	14	30

N246

KNURLED KNOB WITH INSERT WITH SMOOTH HOLE



Materials:

Reinforced polyamide.
Resistant to oils and greases.

Surface finish:

Satin.

Colour:

Black (RAL 9011).

Cap:

Central cap in grey polyamide (RAL 7035).

Inserts:

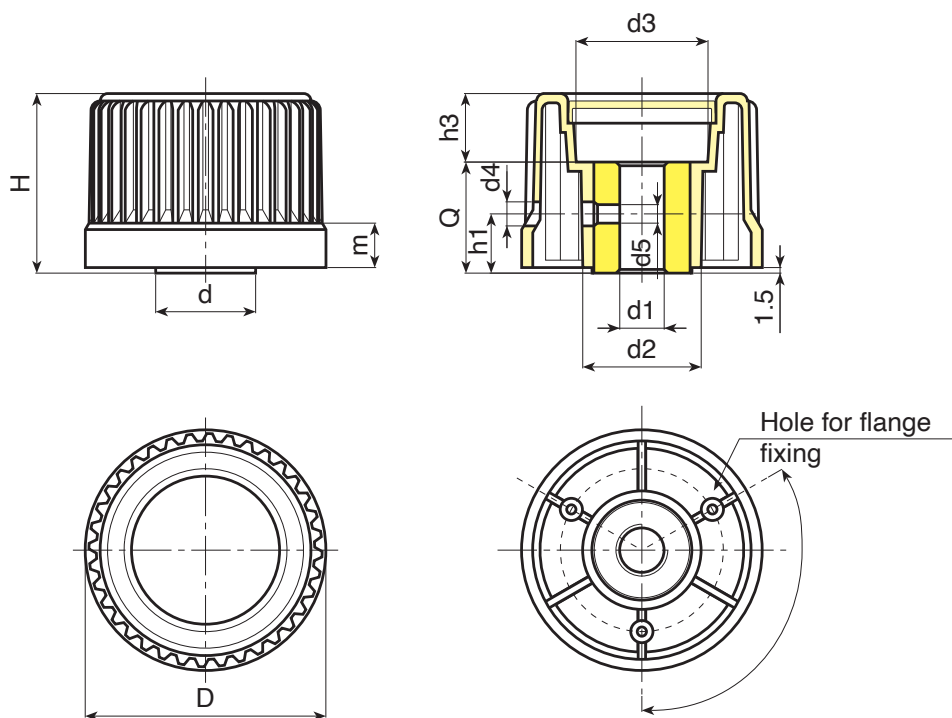
Galvanised steel insert with smooth through bore (tolerance H10).

Notes:

(*) Side NFLAN flange fixing (optional).

Special requests:

- Upon request and for special quantities inserts can be supplied with custom hole diameter d1.
- Upon request and for special quantities inserts can be supplied in different materials/with different coatings.
- Upon request and for special quantities available in the colours indicated in the chart (attention: reduced range) [page 807].



🛒	Art.	D	H	m	d	d2	d3	d4	d5	h1	h3	Dm	d1 _{H10}	Q	📦
●	N24630.TD060113(*)	30	32	13	20	20	17	5.5	M05	16	6	12	6	26	78
●	N24630.TD080113(*)	30	32	13	20	20	17	6.5	M06	16	6	12	8	26	77
●	N24643.TD080113	43	38	14	23	28	23	5.5	M05	16	14	12	8	24	84
●	N24654.TD080113	54	56	14	27	32	30	5.5	M05	16	14	14	8	30	152
●	N24654.TD120113	54	56	14	27	32	30	6.5	M06	16	14	14	12	30	147
●	N24665.TD080113	65	49	14	27	32	36	5.5	M05	16	19	16	8	30	175
●	N24665.TD120113	65	49	14	27	32	36	6.5	M06	16	19	16	12	30	165
●	N24665.TD140113	65	49	14	27	32	36	6.5	M06	16	19	16	14	30	160
●	N24678.TD080113	78	56	15	31	36	50	6.5	M06	18	14	18	8	32	266

Attention: For a minimum of 100 pieces the diameter d1 can be produced with the requested diameter with H10 tolerance.
Dm = Maximum obtainable diameter for subsequent machining (widening).



Stock availability as % (🛒)
90% (●) - 40% (●) - 5% (●)

N248

KNURLED CONTROL KNOB WITH THREADED HOLE INSERT



Materials:

Reinforced polyamide.
Resistant to oils and greases.

Surface finish:

Satin.

Colour:

Black (RAL 9011).

Cap:

Central cap in grey polyamide (RAL 7035).

Inserts:

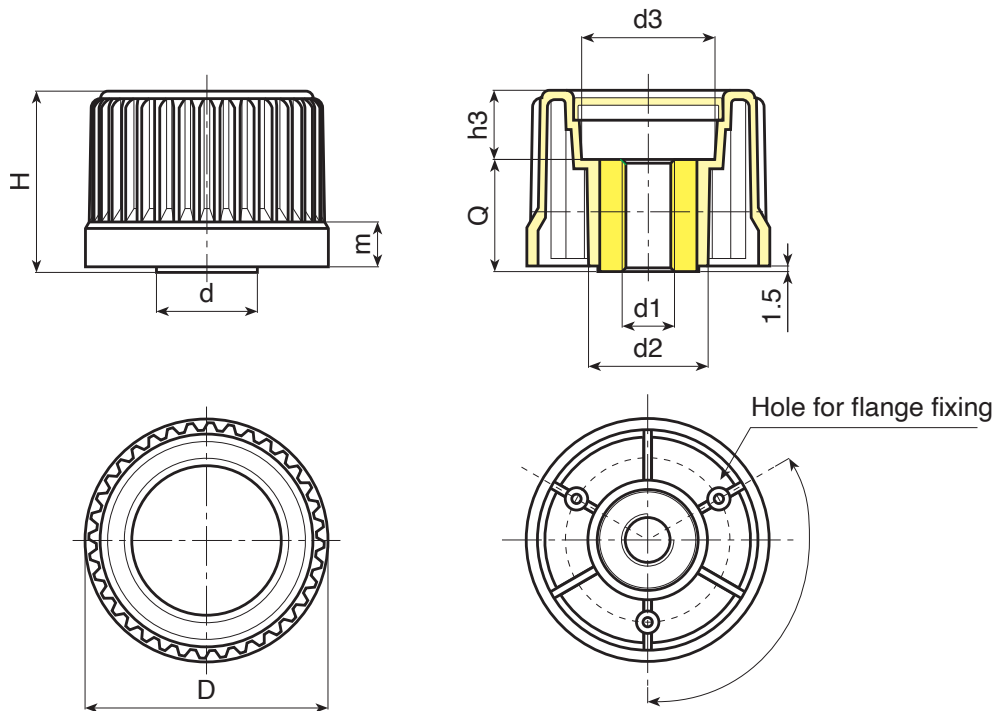
Galvanised steel insert with threaded through hole (thread tolerance 6H).

Notes:

(*) Side NFLAN flange fixing (optional).

Special requests:

- Upon request and for special quantities inserts can be supplied with custom hole diameter d1.
- Upon request and for special quantities inserts can be supplied in different materials/with different coatings.
- Upon request and for special quantities available in the colours indicated in the chart (attention: reduced range) [page 807].



Art.	D	H	m	d	d2	d3	h1	h3	d1 _{6H}	Q	g
N24830.TM..01(*)	30	32	13	20	20	17	16	6	A.R.	26	77
N24843.TM..01	43	38	14	23	28	23	16	14	A.R.	24	84
N24854.TM..01	54	56	14	27	32	30	16	14	A.R.	30	152
N24865.TM..01	65	49	14	27	32	36	16	19	A.R.	30	175
N24878.TM..01	78	56	15	31	36	50	16	14	A.R.	32	266

Threaded holes already provided: N248-30: M08-M10-M12

Threaded holes already provided: N248-43: M08-M10-M12

Threaded holes already provided: N248-54: M08-M10-M12

Threaded holes already provided: N248-65: M10-M12-M14

Threaded holes already provided: N248-78: M12-M14-M16

A.R. = Upon request, for a minimum of 100 pieces.



N245

KNURLED CONTROL KNOB WITH THREADED STUD



Materials:

Reinforced polyamide.
Resistant to oils and greases.

Surface finish:

Satin.

Colour:

Black (RAL 9011).

Cap:

Central cap in grey polyamide (RAL 7035).

Inserts:

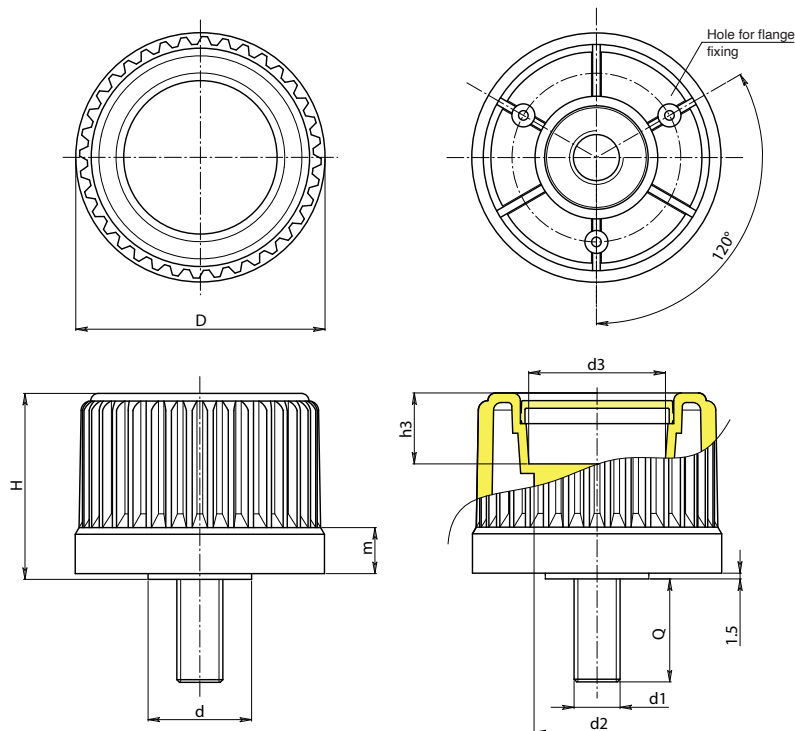
Galvanised steel threaded stud (thread tolerance 6g).

Notes:

(*) Side NFLAN flange fixing (optional).

Special requests:

- Upon request and for special quantities inserts can be supplied with customised lengths.
- Upon request and for special quantities inserts can be supplied in different materials/with different coatings.
- Upon request and for special quantities available in the colours indicated in the chart (attention: reduced range) [page 807].



🛒	Art.	D	H	m	d	d2	d3	h1	h3	LM	d1 _{6g}	Q	📦
●	N24530.TM10X..0113(*)	30	32	13	20	20	17	16	6	80	M10	A.R.	-
●	N24530.TM12X..0113(*)	30	32	13	20	20	17	16	6	80	M12	A.R.	-
●	N24543.TM10X..0113	43	38	14	23	28	23	16	14	90	M10	A.R.	-
●	N24543.TM12X..0113	43	38	14	23	28	23	16	14	90	M12	A.R.	-
●	N24554.TM12X..0113	54	56	14	27	32	30	16	14	100	M12	A.R.	-
●	N24554.TM14X..0113	54	56	14	27	32	30	16	14	100	M14	A.R.	-
●	N24565.TM14X..0113	65	49	14	27	32	36	16	19	120	M14	A.R.	-
●	N24565.TM16X..0113	65	49	14	27	32	36	16	19	120	M16	A.R.	-
●	N24578.TM14X..0113	78	56	15	31	36	50	16	14	120	M14	A.R.	-
●	N24578.TM16X..0113	78	56	15	31	36	50	16	14	120	M16	A.R.	-

Enter the selected stud length in place of the two dots . . in the item code. Customised stud length available for a minimum of 250 pieces.

A.R. = Upon request, for a minimum of 250 pieces.

LM = Maximum mouldable length.



N250



PA6
+G.F.

UL94
HB



KNURLED KNOB WITH INSERT WITH SMOOTH HOLE AND FLANGE

Materials:

Control knob and flange:

Reinforced polyamide.
Resistant to oils and greases.

Surface finish:

Control knob and flange:

Satin.

Colour:

Knob:

Black (RAL 9011 cod. 01).

Flange and cap:

Black (RAL 9011 cod. 01).

Grey (RAL 7035 code 13).

Cap:

Central cap in polyamide.

Inserts:

Galvanised steel insert with smooth through bore (tolerance H10).

Fixing screws:

3 galvanised self-tapping screws 2.9x9.5 UNI6954.

Scale:

Black pad-printed on grey flange;

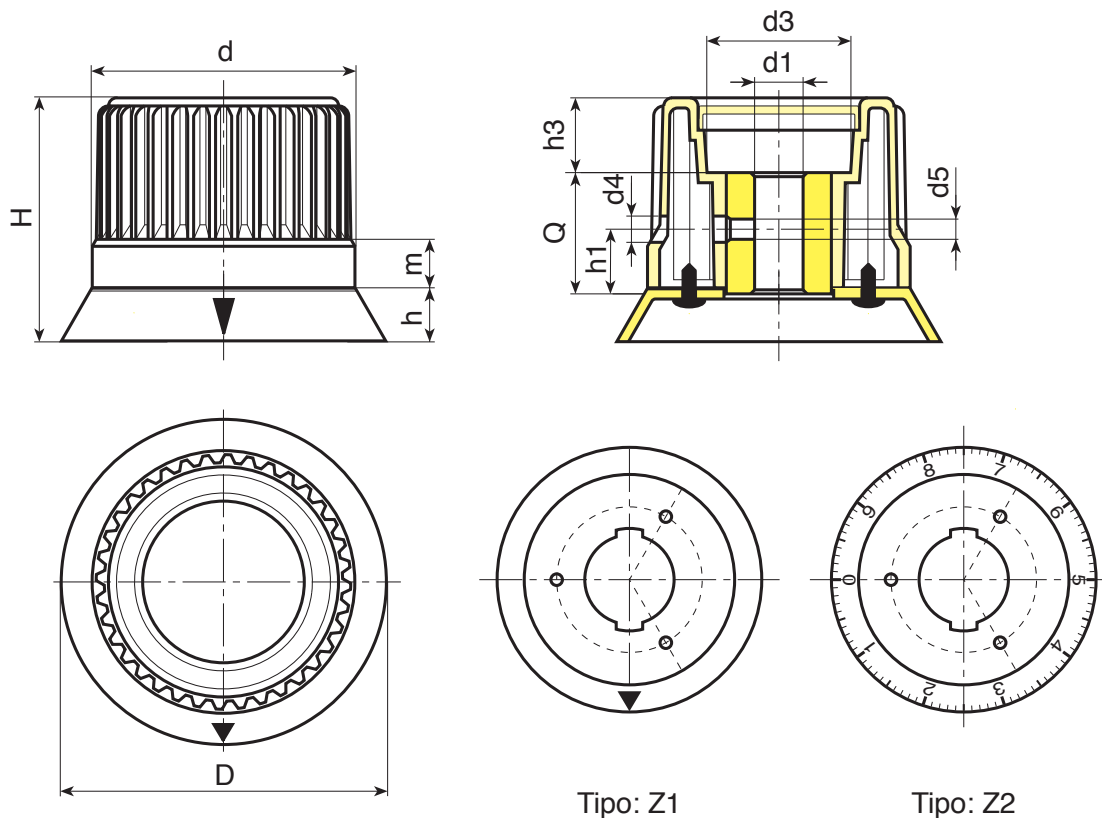
Grey pad-printed on black flange;

For flange with arrow only: version Z1.

For flange with numbers from 0 to 9 with 100 graduations: version Z2.

Special requests:

- Upon request and for special quantities inserts can be supplied with custom hole diameter d1.
- Upon request and for special quantities inserts can be supplied in different materials/with different coatings.
- Upon request and for special quantities available in the colours indicated in the chart [page 807].



N250

KNURLED KNOB WITH INSERT WITH SMOOTH HOLE AND FLANGE



Version with grey (RAL 7035 code no. 13) flange and cap, and black arrow.

Art.	D	H	h	m	d	d3	d4	d5	h1	h3	Dm	d1 _{H10}	Q	g
N25030.TD060113Z1	38	37,5	7	13	30	17	5,5	M05	16	6	12	06	26	85
N25043.TD080113Z1	53	45,5	9	14	43	23	5,5	M05	16	14	12	08	24	92
N25054.TD080113Z1	66	65,5	11	14	54	30	5,5	M05	16	14	14	08	30	166
N25065.TD080113Z1	80	60,5	13	14	65	36	5,5	M05	16	19	16	08	30	186
N25078.TD080113Z1	93	67,5	13	15	78	50	6,5	M06	18	14	18	08	32	292

Version with black flange and cap, and grey arrow.

Art.	D	H	h	m	d	d3	d4	d5	h1	h3	Dm	d1 _{H10}	Q	g
N25030.TD0601Z1	38	37,5	7	13	30	17	5,5	M05	16	6	12	06	26	85
N25043.TD0801Z1	53	45,5	9	14	43	23	5,5	M05	16	14	12	08	24	92
N25054.TD0801Z1	66	65,5	11	14	54	30	5,5	M05	16	14	14	08	30	166
N25065.TD0801Z1	80	60,5	13	14	65	36	5,5	M05	16	19	16	08	30	186
N25078.TD0801Z1	93	67,5	13	15	78	50	6,5	M06	18	14	18	08	32	292

Version with grey (RAL 7035 code no. 13) flange and cap, and black graduated scale.

Art.	D	H	h	m	d	d3	d4	d5	h1	h3	Dm	d1 _{H10}	Q	g
N25030.TD060113Z2	38	37,5	7	13	30	17	5,5	M05	16	6	12	06	26	85
N25043.TD080113Z2	53	45,5	9	14	43	23	5,5	M05	16	14	12	08	24	92
N25054.TD080113Z2	66	65,5	11	14	54	30	5,5	M05	16	14	14	08	30	166
N25065.TD080113Z2	80	60,5	13	14	65	36	5,5	M05	16	19	16	08	30	186
N25078.TD080113Z2	93	67,5	13	15	78	50	6,5	M06	18	14	18	08	32	292

Version with black flange and cap, and grey graduated scale

Art.	D	H	h	m	d	d3	d4	d5	h1	h3	Dm	d1 _{H10}	Q	g
N25030.TD0601Z2	38	37,5	7	13	30	17	5,5	M05	16	6	12	06	26	85
N25043.TD0801Z2	53	45,5	9	14	43	23	5,5	M05	16	14	12	08	24	92
N25054.TD0801Z2	66	65,5	11	14	54	30	5,5	M05	16	14	14	08	30	166
N25065.TD0801Z2	80	60,5	13	14	65	36	5,5	M05	16	19	16	08	30	186
N25078.TD0801Z2	93	67,5	13	15	78	50	6,5	M06	18	14	18	08	32	292

Attention: For a minimum of 100 pieces the diameter d1 can be produced with the requested diameter with H10 tolerance.
Dm = Maximum obtainable diameter for subsequent machining (widening).



Stock availability as % (🛒)
90% (●) - 40% (●) - 5% (●)

NFLAN

FLANGE FOR CONTROL KNOB (N245-N246-N248)



Materials:

Reinforced polyamide.
Resistant to oils and greases.

Surface finish:

Satin.

Colour:

Grey (RAL 7035 cod. 13).

Scale:

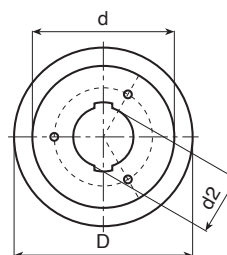
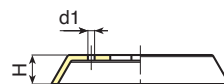
Black pad-printed.

Fixing screws:

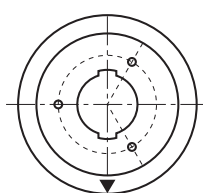
3 galvanised self-tapping screws 2.9x9.5
UNI6954.

Special requests:

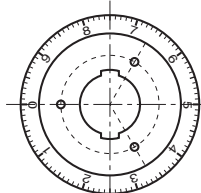
- Upon request the flange can be supplied in black. With white graduated scale.
- Upon request and for special quantities graduated scale to customer's drawing.



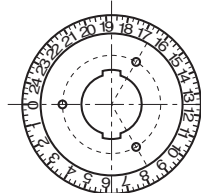
Type: Neutral base



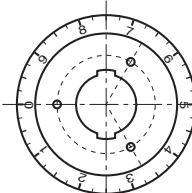
Type: Z1



Type: Z2



Type: Z3



Type: Z4

🛒	Art.	D	H	d/N246/ N248	d1	d2	TYPE	📐
●	NFLAN.T3013	38	7	30	-	20	NEUTRA	5
●	NFLAN.T3013Z1	38	7	30	-	20	Z1 / INDICATORE A FRECCIA	5
●	NFLAN.T4313	53	9	43	3	23	NEUTRA	7
●	NFLAN.T4313Z1	53	9	43	3	23	Z1 / INDICATORE A FRECCIA	7
●	NFLAN.T5413	66	11	54	3	27	NEUTRA	13
●	NFLAN.T5413Z1	66	11	54	3	27	Z1 / INDICATORE A FRECCIA	13
●	NFLAN.T6513	80	13	65	3	27	NEUTRA	20
●	NFLAN.T6513Z1	80	13	65	3	27	Z1 / INDICATORE A FRECCIA	20
●	NFLAN.T6513Z2	80	13	65	3	27	Z2/ Numerazione 0:9 100 divisioni	20
●	NFLAN.T6513Z3	80	13	65	3	27	Z3/ Numerazione 0:9 40 divisioni	20
●	NFLAN.T6513Z4	80	13	65	3	27	Z4/ Numerazione 0:24 100 divisioni	20
●	NFLAN.T7813	93	13	78	3	31	NEUTRA	25
●	NFLAN.T7813Z1	93	13	78	3	31	Z1 / INDICATORE A FRECCIA	25

