



BOTECO[®]

YOUR MECHANICAL COMPONENT

GROUP - O

HINGES





Be awed by the lightness! It's easy
to spruce up the **AESTHETICS!**



BOTECO®

O460

HINGE WITH ADJUSTABLE FRICTION AND THROUGH HOLE



Materials:

Reinforced polyamide.
Resistant to oils and greases.

Surface finish:

Satin.

Colour:

Black (RAL 9011).

Inserts:

- (4) Galvanised steel pin.
- (1) Stainless steel friction adjusting screw (Aisi 304).
- (2) Stainless steel nut for adjusting screw (Aisi 304).
- (3) Pivot pin cap in PA6.

Hole:

Through hole obtained by moulding the plastic for fixing screw
(O46032=M04 O46047=M06).

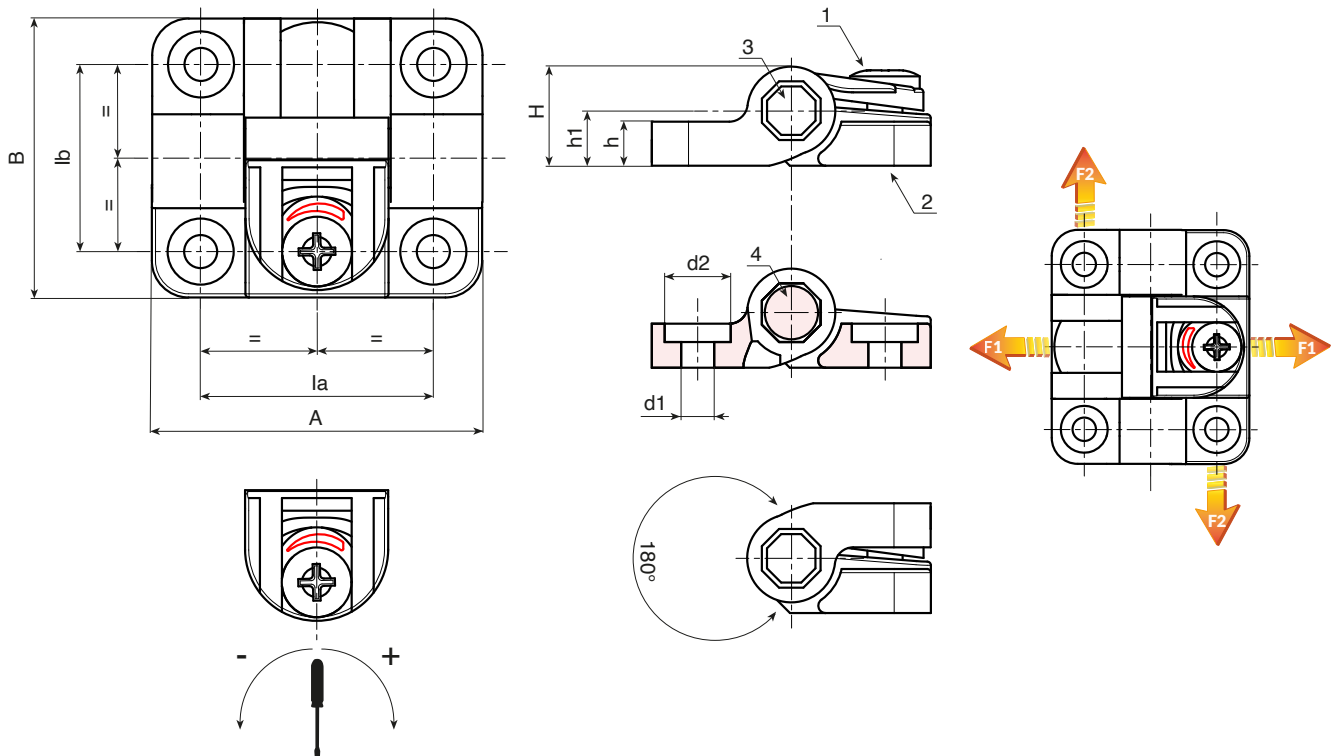
Adjusting the friction device:

Using a screw driver to turn the adjusting screw (1), the friction can be set to a maximum of:

- O46032: 0.8 Nm.
- O46047: 4 Nm.

Special Requests:

- None.



	art.	la	lb	A	B	H	h	h1	d2	d1	g	F1 (N)	F2 (N)
●	O46032.TG04.501	32	25.5	45	38	13.5	6	7.5	9	4.5 (M4)	17	700	1400
●	O46032.TG04.501	47.5	38	63.5	58	18.5	8.5	11.5	12.5	6.5 (M6)	47	1500	2250

O470



DETENT HINGE WITH PRESET POSITIONS AND HOLE COVER CAP

Materials:

Reinforced polyamide.
Resistant to oils and greases.

Surface finish:

Satin.

Colour:

Black (RAL 9011).

Inserts:

Galvanised steel pin;
Stainless steel thrust and lock springs (Aisi 302);
(1) Pin cap in PA6.
(2) Hole cover cap in reinforced PA6.

Hole:

Through hole obtained by moulding the plastic, for screw M05.

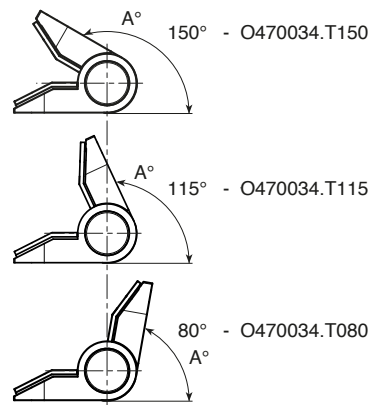
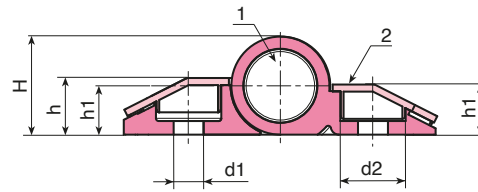
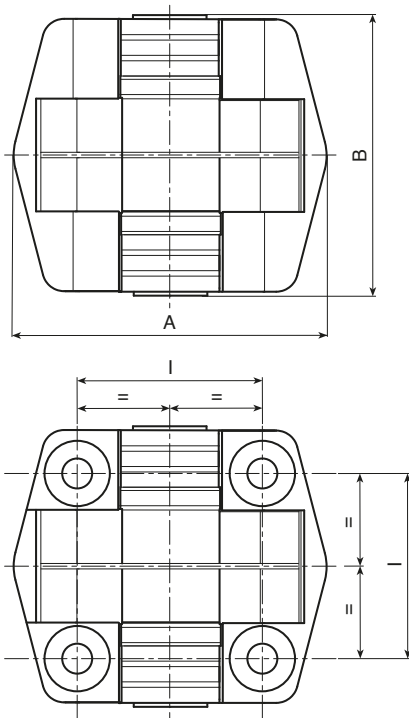
Preset positions:

The springs that act on the pivot pin have three torque calibrations: 0.7 Nm, 1.1 Nm and 1.7 Nm. The preset detent positions are: 80° - 115° - 150°.

Attention: a version of the hinge without springs with free movement to 180° is also available (code O470034.TG5.501).

Special Requests:

- None.



art.	I	A°	Nm	A	B	H	h	h1	d2	d1	**non tradotto**
O470034.TG5.501	34	-	-	51	57	18	10	9	10,5	5,5	43
O470034.T080G5.501N0.7	34	80°	0,7	51	57	18	10	9	10,5	5,5	43
O470034.T080G5.501N1.1	34	80°	1,1	51	57	18	10	9	10,5	5,5	43
O470034.T080G5.501N1.7	34	80°	1,7	51	57	18	10	9	10,5	5,5	43
O470034.T115G5.501N0.7	34	115°	0,7	51	57	18	10	9	10,5	5,5	43
O470034.T115G5.501N1.1	34	115°	1,1	51	57	18	10	9	10,5	5,5	43
O470034.T115G5.501N1.7	34	115°	1,7	51	57	18	10	9	10,5	5,5	43
O470034.T150G5.501N0.7	34	150°	0,7	51	57	18	10	9	10,5	5,5	43
O470034.T150G5.501N1.1	34	150°	1,1	51	57	18	10	9	10,5	5,5	43
O470034.T150G5.501N1.7	34	150°	1,7	51	57	18	10	9	10,5	5,5	43



Stock availability as % (🛒)
90% (●) - 40% (●) - 5% (●)

O410

SHIM FOR HINGE O400



Materials:

Reinforced polyamide.
Resistant to oils and greases.

Surface finish:

Satin.

Colour:

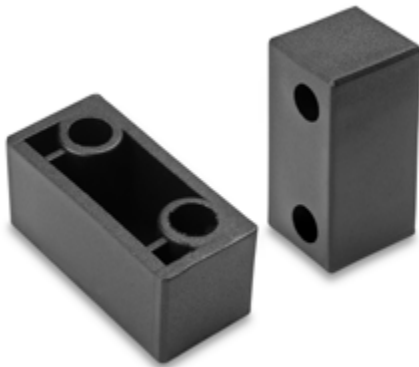
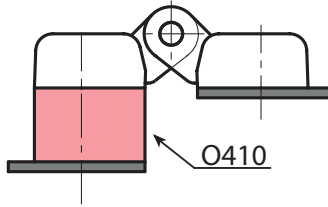
Black (RAL 9011).

Hole:

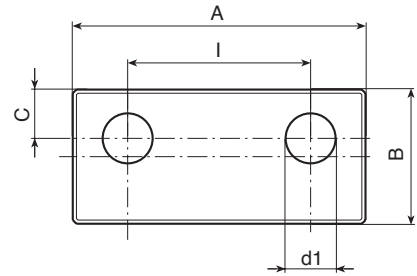
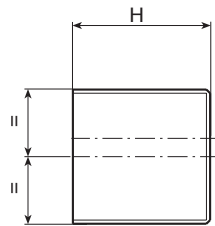
Through hole obtained by moulding the plastic.

Special Requests:

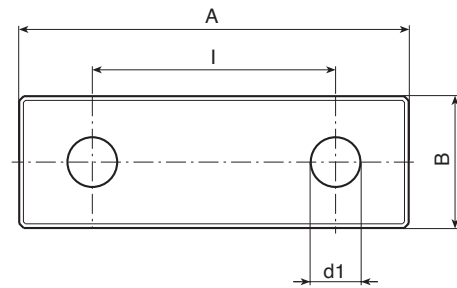
- Upon request and for special quantities available in the colours indicated in the chart [page 807].



O410-30



O41030



O41040

art.	I	C	A	B	H	d1	
O41030.TG08.501	30	8	48	22	22.5	8.5	19
O41040.TG08.501	40	-	65	22	22.5	8.5	24

O400

HINGE WITH THROUGH HOLES



Materials:

Reinforced polyamide.
Resistant to oils and greases.

Surface finish:

Satin.

Colour:

Black (RAL 9011).

Inserts:

Galvanised steel pin.

Hole:

Version TS:

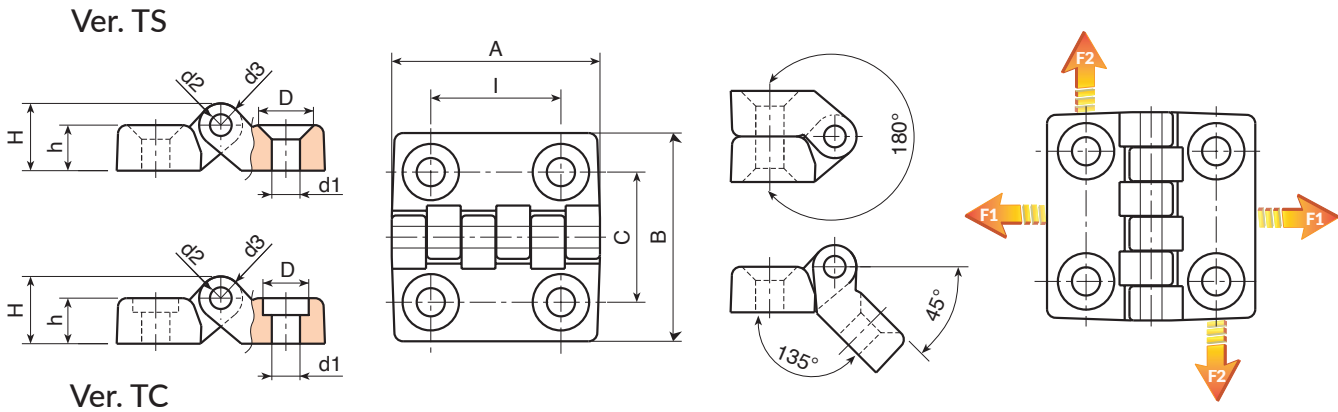
Through hole obtained by moulding the plastic. Seat for countersunk screw DIN 7991 / UNI 5933.

Version TC:

Through hole obtained by moulding the plastic. Seat for cylindrical head screw DIN 912 / UNI 5931.

Special Requests:

- Upon request and for special quantities available in the colours indicated in the chart [page 807].



Version O400-TS: with holes for countersunk head screws

art.	I	C	A	B	h	H	d	d2	d3	d1	g	F1 (N)	F2 (N)
O40020.TG04,501TS	20	20	32	32	7	10.5	8	3	7	4.5	9	1440	490
O40030.TG06,501TS	30	30	48	48	10.5	15.5	13	5	10	6.5	27	1960	1470
O40040.TG06,501TS	40	40	64	64	13	19	13	5	12	6.5	53	2850	1520
O40060.TG08,501TS	60	63	96	96	16	24	16	8	16	8.5	152	4300	1810
O40060.TG10,501TS	60	63	96	96	16	24	20	8	16	10.5	152	4300	1810

Version O400-TC: with holes for cylindrical head screws

art.	I	C	A	B	h	H	d	d2	d3	d1	g	F1 (N)	F2 (N)
O40020.TG04,501TC	20	20	32	32	7	10.5	8	3	7	4.5	9	1440	490
O40030.TG06,501TC	30	30	48	48	10.5	15.5	13	5	10	6.5	27	1960	1470
O40040.TG06,501TC	40	40	64	64	13	19	13	5	12	6.5	53	2850	1520
O40060.TG08,501TC	60	63	96	96	16	24	16	8	16	8.5	152	4300	1810
O40060.TG10,501TC	60	63	96	96	16	24	20	8	16	10.5	152	4300	1810



Stock availability as % (🛒)
90% (●) - 40% (●) - 5% (●)

O400CIN

HINGE WITH THROUGH HOLES WITH STAINLESS STEEL PIN



INOX

Materials:

Reinforced polyamide.
Resistant to oils and greases.

Surface finish:

Satin.

Colour:

Black (RAL 9011).

Inserts:

Stainless steel pin (Aisi 303).

Hole:

Version TS:

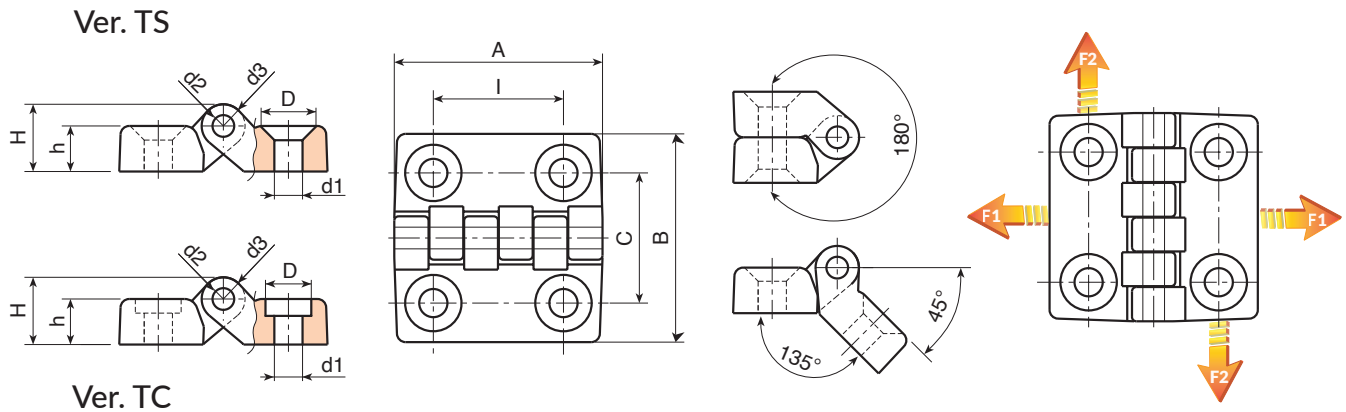
Through hole obtained by moulding the plastic. Seat for countersunk screw
DIN 7991 / UNI 5933.

Version TC:

Through hole obtained by moulding the plastic. Seat for cylindrical head
screw DIN 912 / UNI 5931.

Special Requests:

- Upon request and for special quantities available in the colours indicated in the chart [page 807].



Version O400-TS CIN: with holes for countersunk head screws

art.	I	C	A	B	h	H	d	d2	d3	d1	g	F1 (N)	F2 (N)
O40020.TG04,501TSCIN	20	20	32	32	7	10.5	8	3	7	4.5	9	1440	490
O40030.TG06,501TSCIN	30	30	48	48	10.5	15.5	13	5	10	6.5	27	1960	1470
O40040.TG06,501TSCIN	40	40	64	64	13	19	13	5	12	6.5	53	2850	1520
O40060.TG08,501TSCIN	60	63	96	96	16	24	16	8	16	8.5	152	4300	1810
O40060.TG10,501TSCIN	60	63	96	96	16	24	20	8	16	10.5	152	4300	1810

Version O400-TC CIN: with holes for cylindrical head screws

art.	I	C	A	B	h	H	d	d2	d3	d1	g	F1 (N)	F2 (N)
O40020.TG04,501TCCIN	20	20	32	32	7	10.5	8	3	7	4.5	9	1440	490
O40030.TG06,501TCCIN	30	30	48	48	10.5	15.5	13	5	10	6.5	27	1960	1470
O40040.TG06,501TCCIN	40	40	64	64	13	19	13	5	12	6.5	53	2850	1520
O40060.TG08,501TCCIN	60	63	96	96	16	24	16	8	16	8.5	152	4300	1810
O40060.TG10,501TCCIN	60	63	96	96	16	24	20	8	16	10.5	152	4300	1810



Stock availability as % (🛒)
90% (●) - 40% (●) - 5% (●)

O430

FLAT HINGE WITH THREADED HOLE INSERT

+135°
-30°

PA6
+G.F.

UL94
HB

RoHS
COMPLIANT

Materials:

Reinforced polyamide.
Resistant to oils and greases.

Surface finish:

Satin.

Colour:

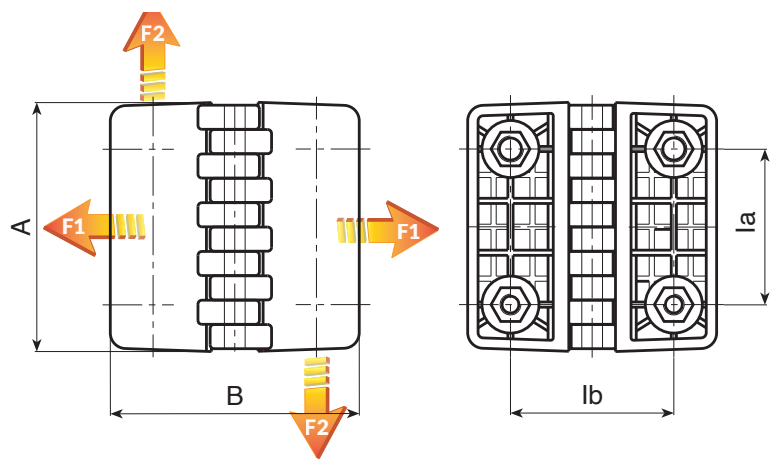
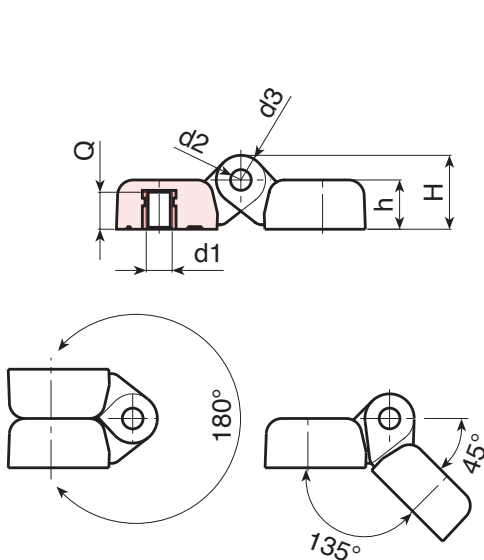
Black (RAL 9011).

Inserts:

Galvanised steel pin.
Brass insert with female threaded hole (thread tolerance 6H).

Special Requests:

- Upon request and for special quantities inserts can be supplied in different materials.
- Upon request and for special quantities available in the colours indicated in the chart [page 807].



	art.	la	lb	A	B	h	H	d2	d3	d16H	Q	g	F1 (N)	F2 (N)
●	O43030.TM0501	30	30	48	48	10.5	15.5	5	10	M5	7	35	2000	1370
●	O43030.TM0601	30	30	48	48	10.5	15.5	5	10	M6	7	35	2000	1370
●	O43040.TM0601	40	40	64	64	13	19	5	12	M6	9	67	4100	1800
●	O43040.TM0801	40	40	64	64	13	19	5	12	M8	9	65	4100	1800
●	O43060.TM0801	60	63	95	95	19	28.5	8	18	M8	13	226	2450	2650
●	O43060.TM1001	60	63	95	95	19	28.5	8	18	M10	13	228	2450	2650

O431

FLAT HINGE WITH THREADED STUD



Materials:

Reinforced polyamide.
Resistant to oils and greases.

Surface finish:

Satin.

Colour:

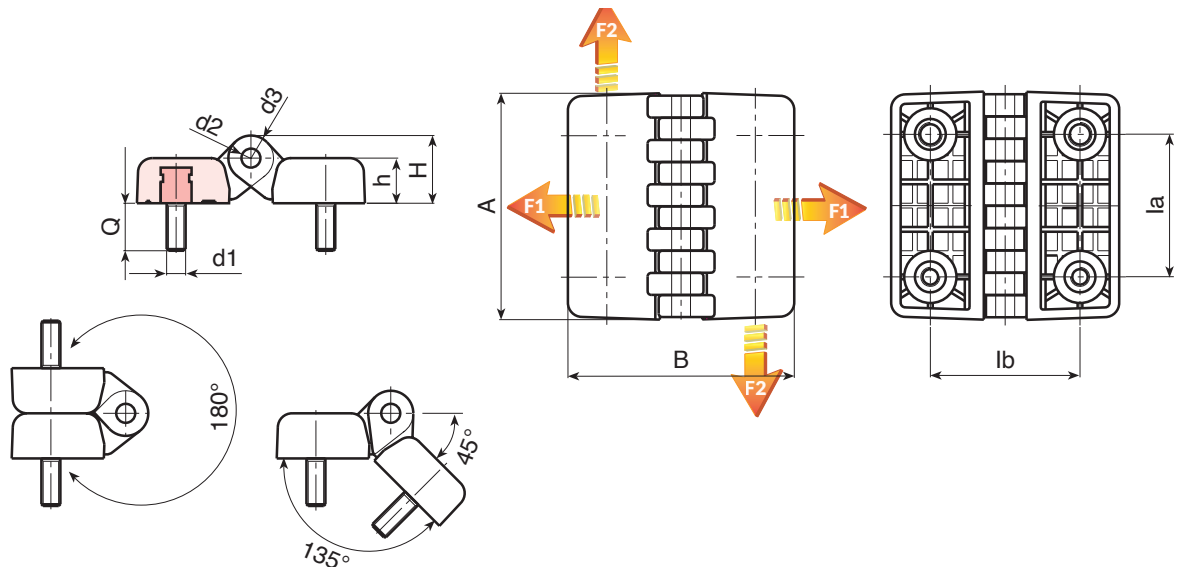
Black (RAL 9011).

Inserts:

Galvanised steel pin.
Galvanised steel threaded stud (thread tolerance 6g).

Special Requests:

- Upon request and for special quantities inserts can be supplied in different materials.
- Upon request and for special quantities available in the colours indicated in the chart [page 807].



	art.	la	lb	A	B	h	H	d2	d3	d1 _{6g}	Q	g	F1 (N)	F2 (N)
●	O43130.TM05X1501	30	30	48	48	10.5	15.5	5	10	M5	15	49	1780	1370
●	O43130.TM06X1501	30	30	48	48	10.5	15.5	5	10	M6	15	52	1780	1370
●	O43140.TM06X2001	40	40	64	64	13	19	5	12	M6	20	90	4120	1760
●	O43140.TM08X2001	40	40	64	64	13	19	5	12	M8	20	100	4120	1760
●	O43160.TM08X2001	60	63	95	95	19	28.5	8	18	M8	20	260	4900	1275
●	O43160.TM10X2001	60	63	95	95	19	28.5	8	18	M10	20	278	4900	1275

O432

+135°
-30°

PA6
+G.F.

UL94
HB

RoHS
COMPLIANT

FLAT HINGE WITH THREADED STUD AND THREADED HOLE INSERT

Materials:

Reinforced polyamide.
Resistant to oils and greases.

Surface finish:

Satin.

Colour:

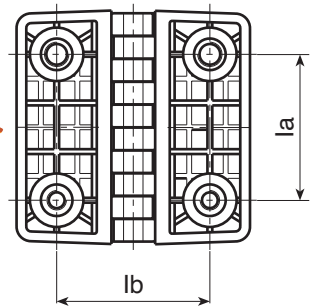
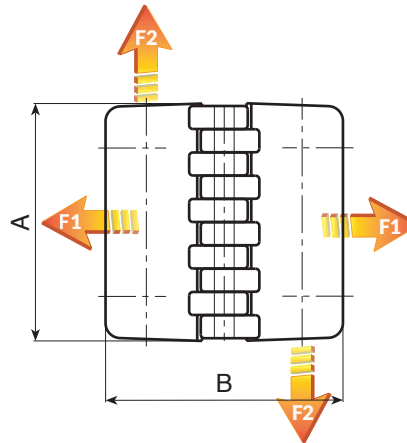
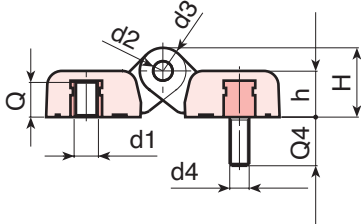
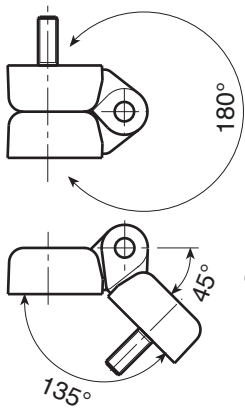
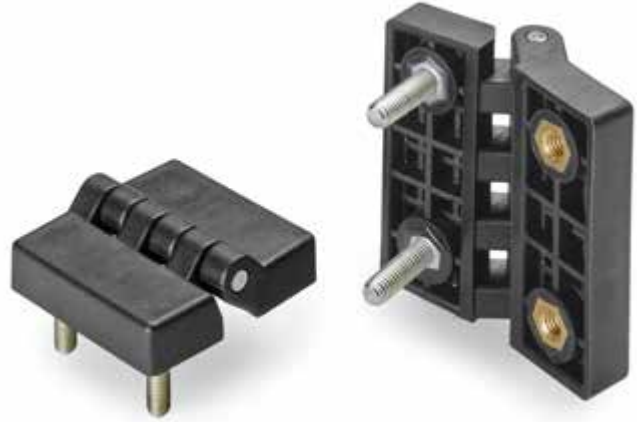
Black (RAL 9011).

Inserts:

Galvanised steel pin.
Brass insert with female threaded hole (thread tolerance 6H).
Galvanised steel threaded stud (thread tolerance 6g).

Special Requests:

- Upon request and for special quantities inserts can be supplied in different materials.
- Upon request and for special quantities available in the colours indicated in the chart [page 807].



	art.	la	lb	A	B	h	H	d2	d3	d1-d4	Q	Q4	g	F1 (N)	F2 (N)
●	O43230.TM0501	30	30	48	48	10.5	15.5	5	10	M05	7	15	40	1850	1350
●	O43230.TM0601	30	30	48	48	10.5	15.5	5	10	M06	7	15	41	1850	1350
●	O43240.TM0601	40	40	64	64	13	19	5	12	M06	9	20	73	4000	1600
●	O43240.TM0801	40	40	64	64	13	19	5	12	M08	9	20	85	4000	1600
●	O43260.TM0801	60	63	95	95	19	28.5	8	18	M08	13	20	240	3100	1400
●	O43260.TM1001	60	63	95	95	19	28.5	8	18	M10	13	20	250	3100	1400

O433



FLAT HINGE WITH THROUGH HOLE AND THREADED HOLE INSERT

Materials:

Reinforced polyamide.
Resistant to oils and greases.

Surface finish:

Satin.

Colour:

Black (RAL 9011).

Inserts:

Galvanised steel pin.
Brass insert with female threaded hole (thread tolerance 6H).

Hole:

Version TS:

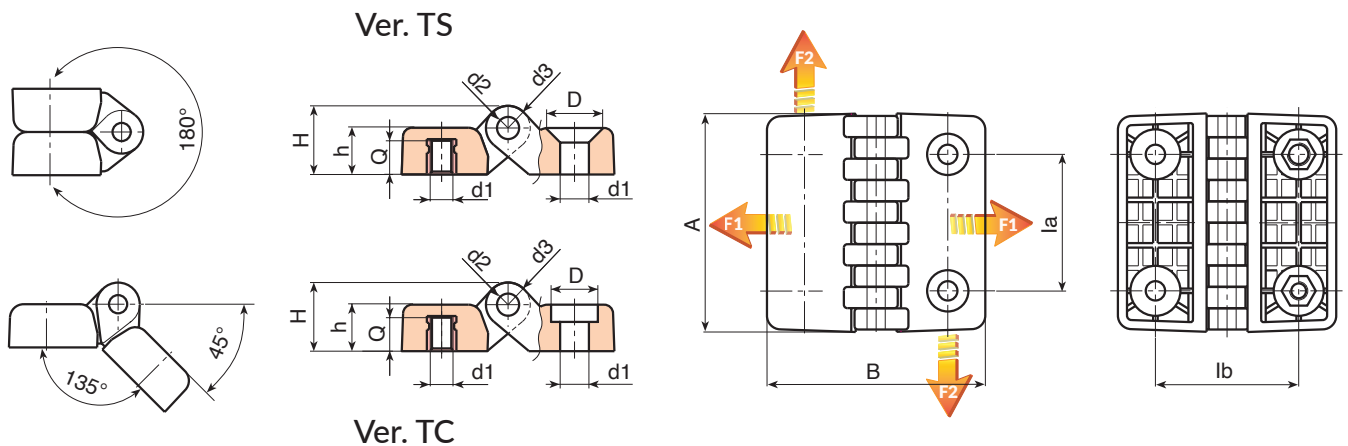
Through hole obtained by moulding the plastic. Seat for countersunk screw DIN 7991 / UNI 5933.

Version TC:

Through hole obtained by moulding the plastic. Seat for cylindrical head screw DIN 912 / UNI 5931.

Special Requests:

- Upon request and for special quantities inserts can be supplied in different materials.
- Upon request and for special quantities available in the colours indicated in the chart [page 807].



Version O433-TS: with holes for countersunk head screws

	art.	la	lb	A	B	h	H	d2	d3	d1	Q	g	F1 (N)	F2 (N)
●	O43330.TM0601TS	30	30	48	48	10.5	15.5	5	10	M6 / 6,5	7	31	2000	1450
●	O43340.TM0601TS	40	40	64	64	13	19	5	12	M6 / 6,5	9	60	3500	1650

Version O433-TC: with holes for cylindrical head screws

	art.	la	lb	A	B	h	H	d2	d3	d1	Q	g	F1 (N)	F2 (N)
●	O43330.TM0601TC	30	30	48	48	10.5	15.5	5	10	M6 / 6,5	7	31	2000	1450
●	O43340.TM0601TC	40	40	64	64	13	19	5	12	M6 / 6,5	9	60	3500	1650

O434

+135°
-30°

PA6
+G.F.

UL94
HB

RoHS
COMPLIANT

FLAT HINGE WITH THREADED STUD AND THROUGH HOLE

Materials:

Reinforced polyamide.
Resistant to oils and greases.

Surface finish:

Satin.

Colour:

Black (RAL 9011).

Inserts:

Galvanised steel pin.
Galvanised steel threaded stud (thread tolerance 6g).

Hole:

Version TS:

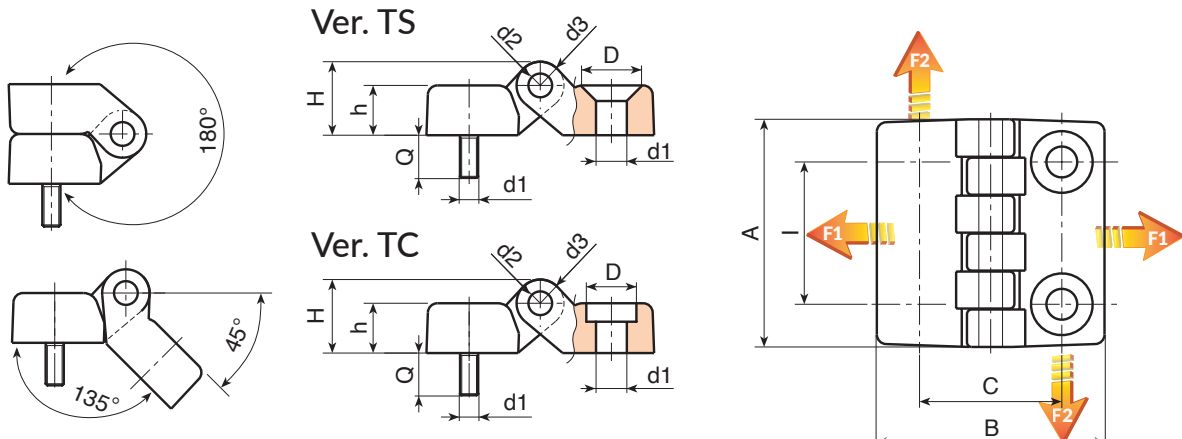
Through hole obtained by moulding the plastic. Seat for countersunk screw DIN 7991 / UNI 5933.

Version TC:

Through hole obtained by moulding the plastic. Seat for cylindrical head screw DIN 912 / UNI 5931.

Special Requests:

- Upon request and for special quantities inserts can be supplied in different materials.
- Upon request and for special quantities available in the colours indicated in the chart [page 807].



Version O434-TS: with holes for countersunk head screws

art.	la	lb	A	B	h	H	d2	d3	d1	Q	g	F1 (N)	F2 (N)
● O43430.TM0601TS	30	30	48	48	10.5	15.5	5	10	M6 / 6,5	15	31	2000	1450
● O43440.TM0601TS	40	40	64	64	13	19	5	12	M6 / 6,5	20	60	3500	1650

Version O434-TC: with holes for cylindrical head screws

art.	la	lb	A	B	h	H	d2	d3	d1	Q	g	F1 (N)	F2 (N)
● O43430.TM0601TC	30	30	48	48	10.5	15.5	5	10	M6 / 6,5	15	31	2000	1450
● O43440.TM0601TC	40	40	64	64	13	19	5	12	M6 / 6,5	20	60	3500	1650

O402

FLAT HINGE WITH LOWERED PIVOT PIN AND THROUGH HOLES



Materials:

Reinforced polyamide.
Resistant to oils and greases.

Surface finish:

Satin.

Colour:

Black (RAL 9011).

Inserts:

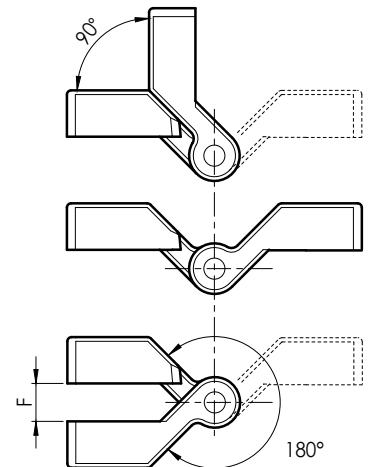
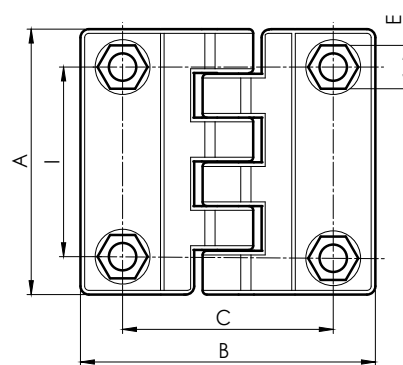
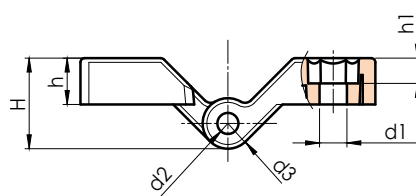
Galvanised steel pin.

Hole:

Through hole obtained by moulding the plastic. Hole for hex head screw UNI 5727.

Special Requests:

- Upon request and for special quantities available in the colours indicated in the chart [page 807].



art.	I	C	A	B	E	F	h	h1	H	d2	d3	d1
O402045.TG06.501	45	50	63	70	10	9	11	6	21.5	5	12	6.5

O450



UNIVERSAL HINGE WITH THREADED INSERT TO MOUNT STRAIGHT DOOR

Materials:

Reinforced polyamide.
Resistant to oils and greases.

Surface finish:

Satin.

Colour:

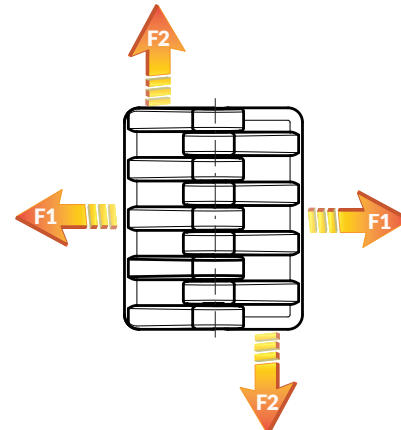
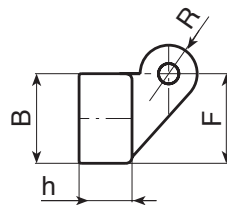
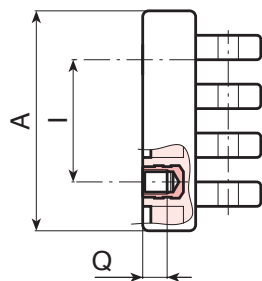
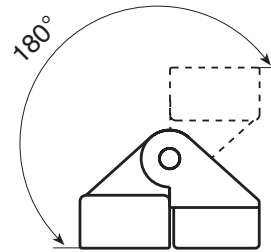
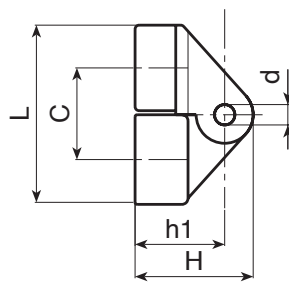
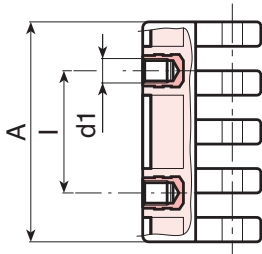
Black (RAL 9011).

Inserts:

Galvanised steel pin.
Brass insert with female threaded hole (thread tolerance 6H).
(*) Galvanised steel insert with female threaded hole (thread tolerance 6H).

Special Requests:

- None.



art.	I	C	A	B	L	F	h	h1	H	d	R	d16H	Q	g	F1(N)	F2(N)
O45030.TM0501	15	18	30	17	35	18	11	19	25	4	11	M5	8	26	1180	1130
O45054.TM0601	30	22	54	21	44	22	13	22	30	5	15	M6	7	58	1520	2980
O45078.TM0801	42	32	78	30	61	30	18	31	42	8	21	(*)M8	10	178	885	2875



O452

+135°
-30°

PA6
+G.F.

UL94
HB

RoHS
COMPLIANT

UNIVERSAL HINGE WITH THREADED INSERT TO MOUNT ANGULAR DOOR

Materials:

Reinforced polyamide.
Resistant to oils and greases.

Surface finish:

Satin.

Colour:

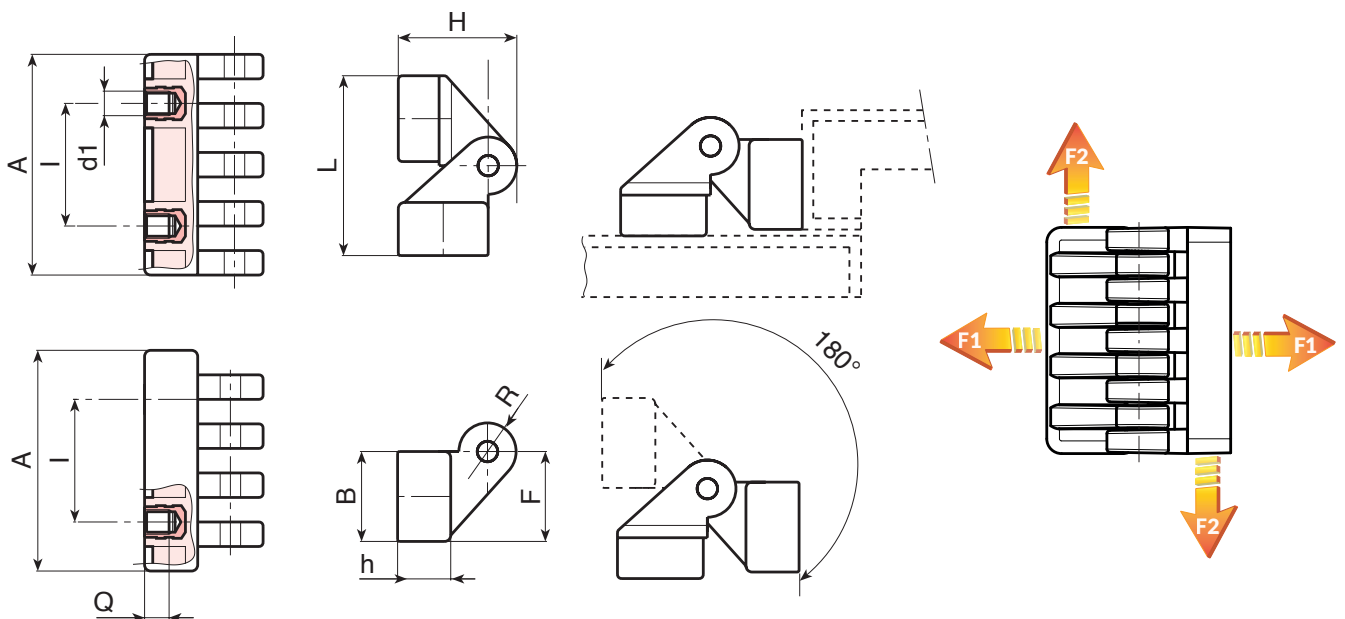
Black (RAL 9011).

Inserts:

Galvanised steel pin.
Brass insert with female threaded hole (thread tolerance 6H).
(* Galvanised steel insert with female threaded hole (thread tolerance 6H).

Special Requests:

- None.



art.	I	C	A	B	L	F	h	h1	H	d	R	d16H	Q	g	F1 (N)	F2 (N)
O45230.TM0501	15	18	30	17	36	18	11	19	25	4	11	M5	8	26	1180	1130
O45254.TM0601	30	22	54	21	44	22	13	22	30	5	15	M6	7	58	1520	2980
O45278.TM0801	42	32	78	30	62	30	18	31	42	8	21	(*) M8	10	178	885	2875

O451



UNIVERSAL HINGE WITH THREADED STUD TO MOUNT STRAIGHT DOOR

Materials:

Reinforced polyamide.
Resistant to oils and greases.

Surface finish:

Satin.

Colour:

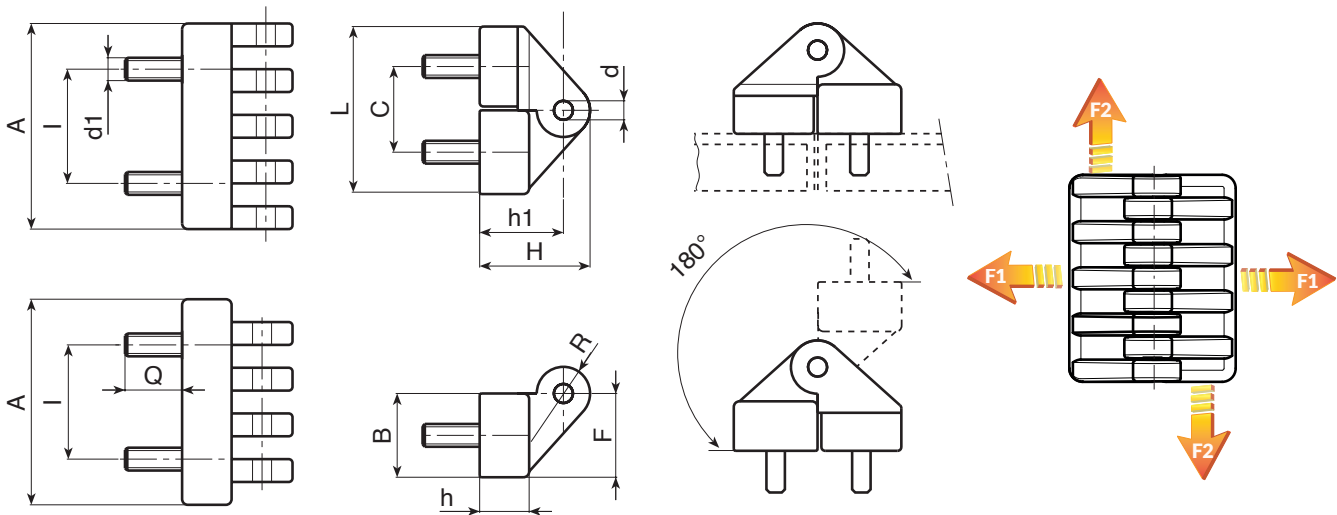
Black (RAL 9011).

Inserts:

Galvanised steel pin.
Galvanised steel threaded stud (thread tolerance 6g).

Special Requests:

- None.



art.	I	C	A	B	L	F	h	h1	H	d	R	d1 _{6g}	Q	g	F1 (N)	F2 (N)
● O45130.TM05X1001	15	18	30	17	35	18	11	19	25	4	11	M5	10	38	690	1080
● O45154.TM06X1501	30	22	54	21	44	22	13	22	30	5	15	M6	15	72	295	1670
● O45178.TM08X2001	42	32	78	30	61	30	18	31	42	8	21	M8	20	190	1025	2830



O453

+135°
-30°

PA6
+G.F.

UL94
HB

RoHS
COMPLIANT

UNIVERSAL HINGE WITH THREADED STUD TO MOUNT ANGULAR DOOR

Materials:

Reinforced polyamide.
Resistant to oils and greases.

Surface finish:

Satin.

Colour:

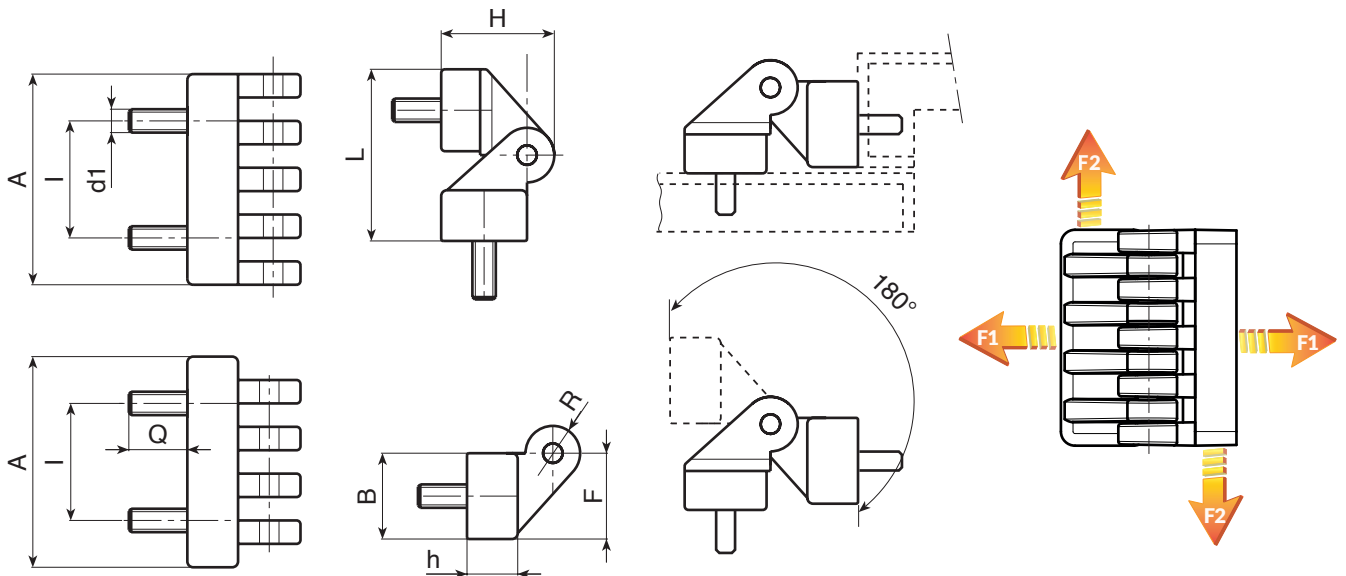
Black (RAL 9011).

Inserts:

Galvanised steel pin.
Galvanised steel threaded stud (thread tolerance 6g).

Special Requests:

- None.



🛒	art.	I	C	A	B	L	F	h	h1	H	d	R	d1 _{6g}	Q	g	F1 (N)	F2 (N)
●	O45330.TM05X1001	15	18	30	17	35	18	11	19	25	4	11	M5	10	38	690	1080
●	O45354.TM06X1501	30	22	54	21	44	22	13	22	30	5	15	M6	15	72	295	1670
●	O45378.TM08X2001	42	32	78	30	61	30	18	31	42	8	21	M8	20	190	1025	2830

O454

+135°
-30°

PA6
+G.F.

UL94
HB

RoHS
COMPLIANT

UNIVERSAL HINGE WITH THREADED STUD AND INSERT TO MOUNT STRAIGHT DOOR

Materials:

Reinforced polyamide.
Resistant to oils and greases.

Surface finish:

Satin.

Colour:

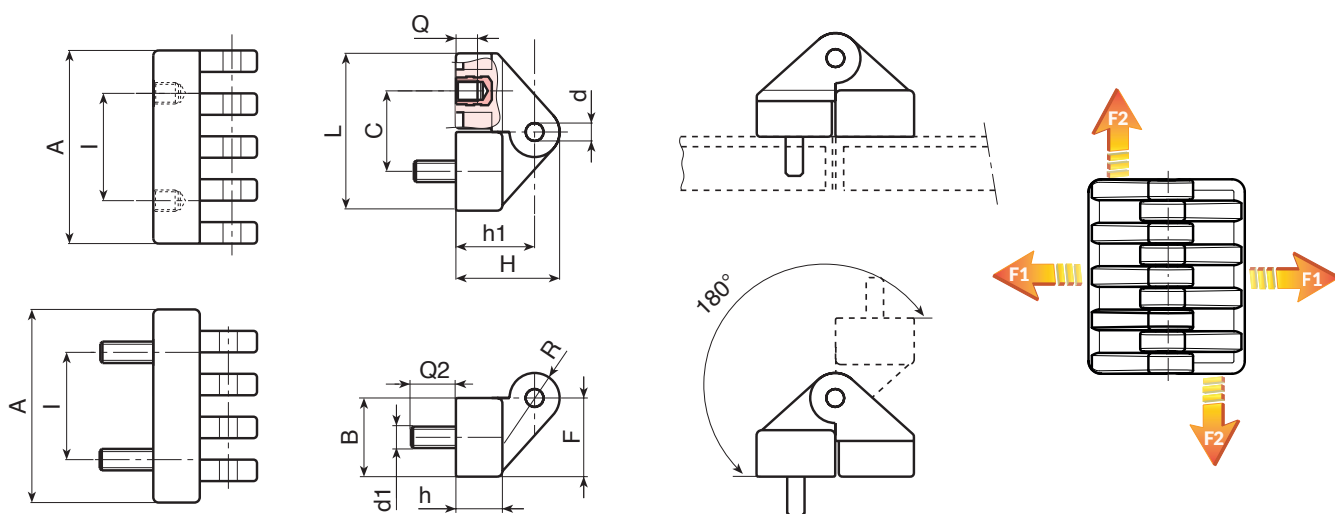
Black (RAL 9011).

Inserts:

Galvanised steel pin.
Galvanised steel threaded stud (thread tolerance 6g).
Brass insert with female threaded hole (thread tolerance 6H).

Special Requests:

- None.



art.	I	C	A	B	L	F	h	h1	H	d	R	d1	Q	Q2	F1(N)	F2(N)	
O45454.TM0601	30	22	54	21	44	22	13	22	30	5	15	M6	7	15	72	295	1670



Stock availability as % (🛒)
90% (●) - 40% (●) - 5% (●)

O455

+135°
-30°

PA6
+G.F.

UL94
HB

RoHS
COMPLIANT

UNIVERSAL HINGE WITH THREADED STUD AND INSERT TO MOUNT ANGULAR DOOR

Materials:

Reinforced polyamide.
Resistant to oils and greases.

Surface finish:

Satin.

Colour:

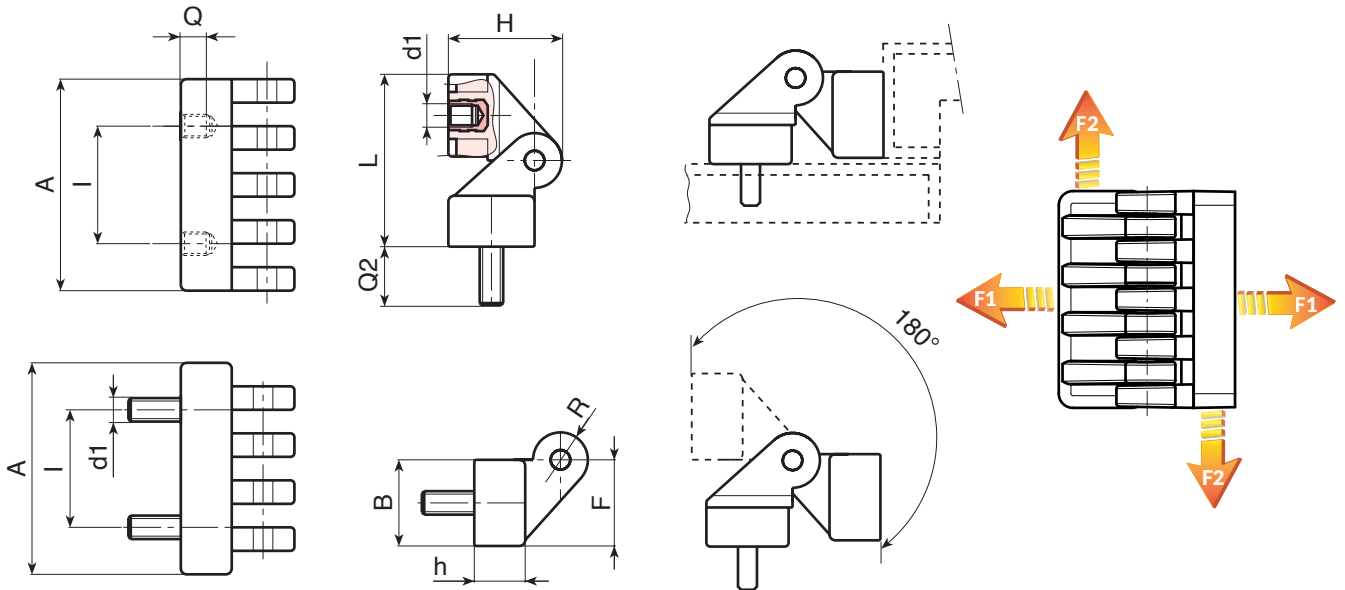
Black (RAL 9011).

Inserts:

Galvanised steel pin.
Galvanised steel threaded stud (thread tolerance 6g).
Brass insert with female threaded hole (thread tolerance 6H).

Special Requests:

- None.



art.	I	C	A	B	L	F	h	h1	H	d	R	d1	Q	Q2	F1(N)	F2(N)	
O45554.TM0601	30	22	54	21	44	22	13	22	30	5	15	M6	15	15	72	295	1670

O300

METAL HINGE WITH THROUGH HOLES



Materials:

Die-cast zamak alloy (zinc, aluminium and copper alloy).

Surface finish:

Smooth.

Colour:

O300:
Black cataphoresis coating.

O300L:
Chromed polished.

O300Z:
Standard blue galvanising.

Inserts:

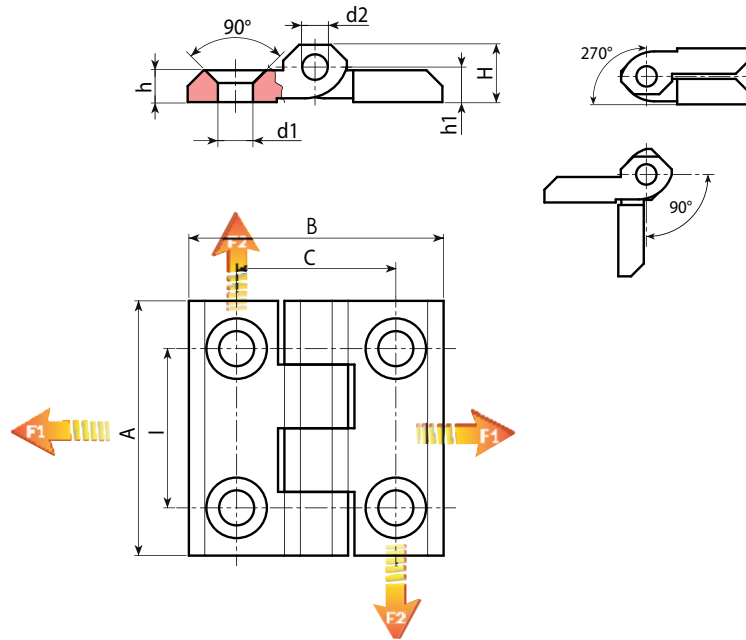
Stainless steel pivot pin (Aisi 303).

Holes:

Through holes obtained by moulding. 90° countersunk hole for UNI 5933
- UNI 6109 screws.

Special Requests:

- None.



Version O300: zamak hinge, black cataphoresis coating

🛒	Art.	l	C	A	B	H	h	h1	d2	d1	📏	F1 (N)	F2 (N)
●	O30025.ZG5.501	25	25	40	40	9	5	5.5	4	5.5	47	-	-
●	O30030.ZG6.501	30	30	50	50	11.5	6	6	6	6.5	92	6230	1420
●	O30036.ZG6.501	36	36	60	60	15	8	9	6	6.5	100	-	-
●	O30036.ZG8.501	36	36	60	60	15	8	9	6	8.5	98	-	-
●	O30040.ZG6.501	40	40	64	64	11.5	6	6	6	6.5	110	4340	4200

Version O300L: chromed zamak hinge

🛒	Art.	l	C	A	B	H	h	h1	d2	d1	📏	F1 (N)	F2 (N)
●	O30025.ZG5.5L	25	25	40	40	9	5	5.5	4	5.5	47	-	-
●	O30030.ZG6.5L	30	30	50	50	11.5	6	6	6	6.5	92	6230	1420
●	O30036.ZG8.5L	36	36	60	60	15	8	9	8	8.5	100	-	-

Version O300Z: galvanised zamak hinge

🛒	Art.	l	C	A	B	H	h	h1	d2	d1	📏	F1 (N)	F2 (N)
●	O30025.ZG5.5Z	25	25	40	40	9	5	5.5	4	5.5	47	-	-
●	O30030.ZG6.5Z	30	30	50	50	11.5	6	6	6	6.5	92	6230	1420
●	O30036.ZG8.5Z	36	36	60	60	15	8	9	6	8.5	98	-	-



O300CIN

STAINLESS STEEL HINGE WITH THROUGH HOLES

+200°
-30°

AISI
316

RoHS
COMPLIANT

INOX

Materials:

Stainless steel (Aisi 316).

Surface finish:

Natural brushing.

Colour:

Natural.

Inserts:

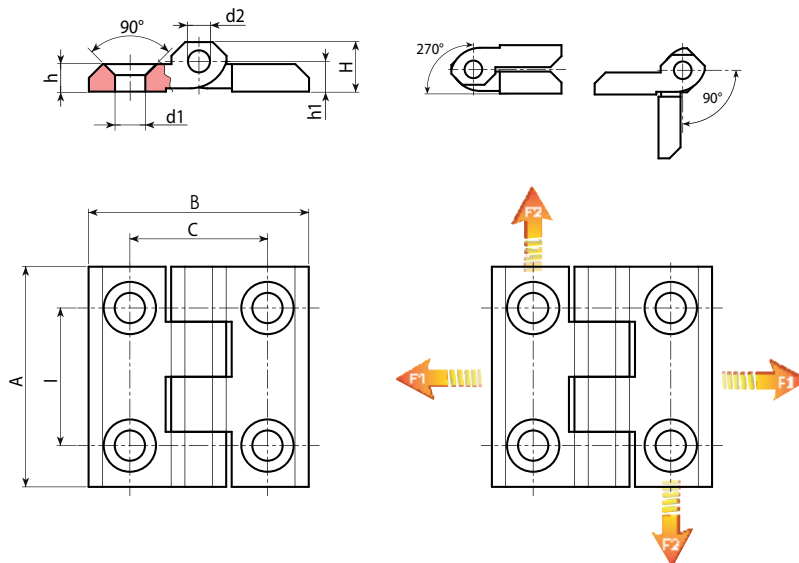
Stainless steel pivot pin (Aisi 303).

Holes:

Through holes obtained by moulding. 90° countersunk hole for UNI 5933 - UNI 6109 screws.

Special Requests:

- None.



🛒	Art.	l	C	A	B	H	h	h1	d2	d1	📦	F1 (N)	F2 (N)
●	O30025.HG5.5CIN	25	25	40	40	9	5	5.5	4	5.5	60	-	-
●	O30030.HG6.5CIN	30	30	50	50	11	5.5	6.5	6	6.5	95	19600	9800
●	O30036.HG8.5CIN	36	36	60	60	14.5	7.7	8.5	8	8.5	185	-	-

O305

FLAT ZAMAK HINGE WITH THROUGH HOLES



Materials:

Die-cast zamak alloy (zinc, aluminium and copper alloy).

Surface finish:

Satin.

Colour:

Natural.

Inserts:

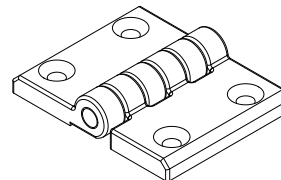
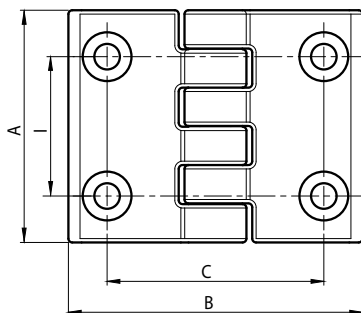
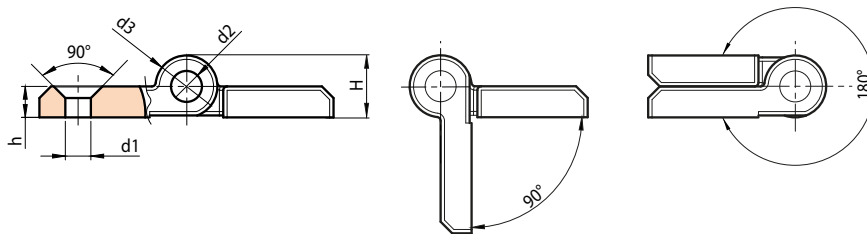
Galvanised steel pivot pin (C45).

Holes:

Through holes obtained by moulding. 90° countersunk hole for UNI 5933 – UNI 6109 screws.

Special Requests:

- None.



Art.	l	C	A	B	H	h	d2	d1	g
O30536.ZG6.5PAL	36	56	60	76	16	8	8	6,5	250

O520



VERTICAL ZAMAK HINGE WITH SINGLE THREADED MOUNT

Materials:

(1-2) Die-cast zamak alloy (zinc, aluminium and copper alloy).

Surface finish:

Colour:

(01) Black epoxy powder coated (RAL 9011).
(Z) Standard blue galvanising.

Inserts:

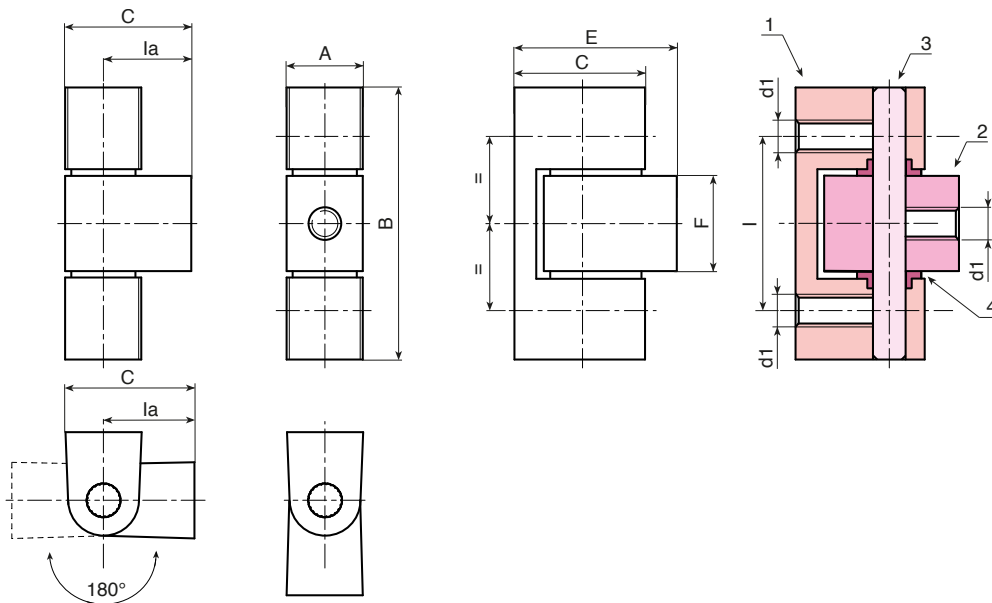
(3) Stainless steel hinge pivot pin (Aisi 304).
(4) Natural PA6 spacer bush.

Holes:

Female threaded holes M06 obtained by moulding.

Special Requests:

- None.



Black coated version with final code 01

Art.	I	Ia	A	B	C	E	F	d1
O520032.ZM0601	32	12	14	50	19	24	17.5	M6

Galvanised version with final letter Z at the end

Art.	I	Ia	A	B	C	E	F	d1
O520032.ZM06Z	32	12	14	50	19	24	17.5	M6

O530

BASIC VERTICAL LIFT-OFF HINGE



Materials:

(1-2) Die-cast zamak alloy (zinc, aluminium and copper alloy).

Surface finish:

Colour:

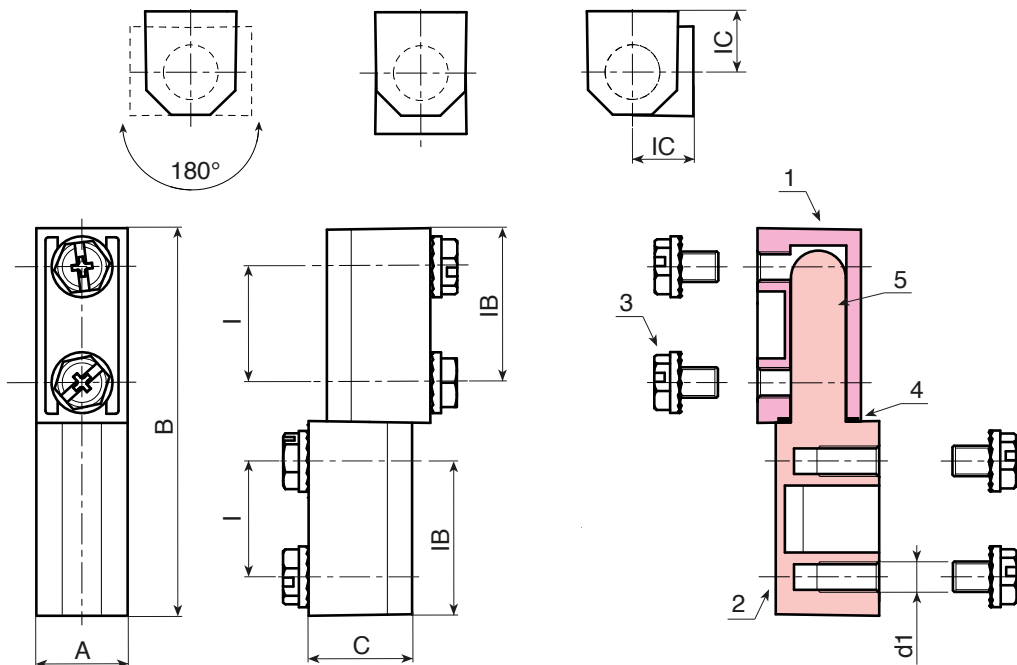
(O1) Black epoxy powder coated (RAL 9011).
(Z) Standard blue galvanising.

Inserts:

(3) 4 galvanised steel screws M05x06 with toothed lock washer.
(4) Black oxide treated spacer washer.
(5) Die-cast zamak pivot pin.

Special Requests:

- Upon request and for special quantities (minimum 100 pieces) the hinge can be supplied with a stainless steel pivot pin (Aisi 304) (code O530019.ZM0501CIN).



Black coated version with final code O1

Art.	I	IB	IC	A	B	C	d1	g
O530019.ZM0501	19	23,5	10	14	64,5	17	M5	86

Galvanised version with final letter Z at the end

Art.	I	IB	IC	A	B	C	d1	g
O530019.ZM05Z	19	23,5	10	14	64,5	17	M5	86

O510

VERTICAL ZAMAK HINGE WITH EXTENSION



Materials:

(1-2) Die-cast zamak alloy (zinc, aluminium and copper alloy).

Surface finish:

Light sandblasting.

Colour:

(01) Black epoxy powder coated (RAL 9011).

(Z) Standard blue galvanising.

Inserts:

(3) Stainless steel hinge pivot pin (Aisi 304).

(4) Natural PA6 spacer bush.

EXTENSION:

The hinge can be supplied with the extension (5) included. In your order add the letter P to the end of the code.

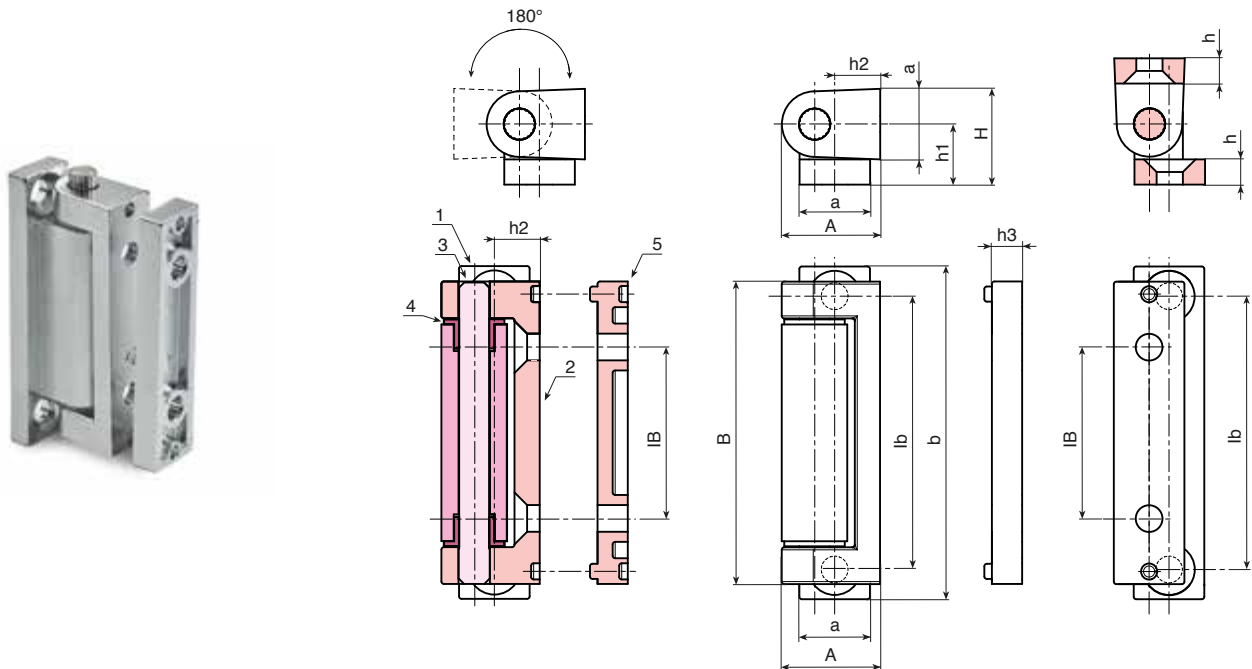
Holes:

Through holes obtained by moulding. 90° countersunk hole for UNI 5933 – UNI 6109 screws.

Special Requests:

- It is possible to order, separately, an additional thickness of 6 mm in black using code no. O51160.ZG05.0501; or a galvanised one using code no. O51160.ZG05.05Z.

ATTENTION: The hinge is delivered with the pivot pin unassembled, as it must be removed in any case before mounting on the door.



Black coated version with final code 01

Art.	lb	IB	A	a	B	b	H	Ht	h	h1	h2	h3	d1	g
O510054.ZG05.501	54	34	19,5	14	60	66	19	-	5	12,5	9	6	5,3	100

Galvanised version with final letter Z at the end

Art.	lb	IB	A	a	B	b	H	Ht	h	h1	h2	h3	d1	g
O510054.ZG05.5Z	54	34	19,5	14	60	66	19	-	5	12,5	9	6	5,3	100

O500

REMOVABLE FLAT ZAMAK HINGE WITH THREADED STUD



Materials:

(1) Die-cast zamak alloy (zinc, aluminium and copper alloy).

Surface finish:

Colour:

(01) Black epoxy powder coated (RAL 9011).
(Z) Standard blue galvanising.

Inserts:

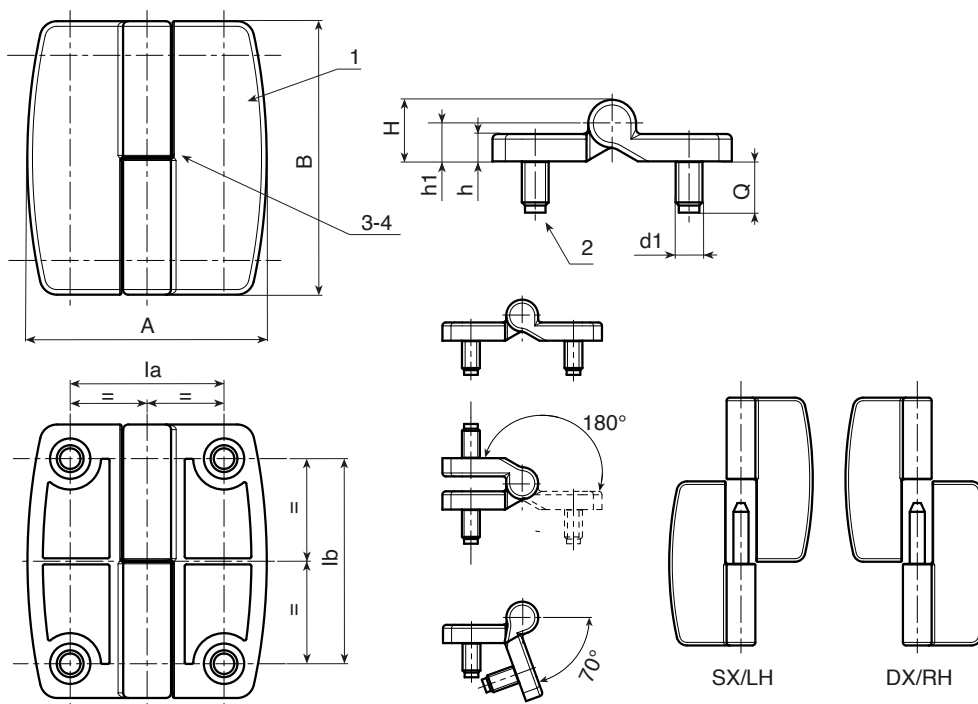
(2) Galvanised steel threaded stud (thread tolerance 6g).
(3) Stainless steel hinge pivot pin (Aisi 304).
(4) Stainless steel separating washer (Aisi 304) inserted between the two knuckles.

Assembly:

The hinge can be supplied for mounting doors that swing open to the right (DX/RH - enter the letter D at the end of the code); or for doors that swing open to the left (SX/LH - enter the letter S at the end of the code).

Special Requests:

- None.



Black coated version code 01, final letter S at the end for Left version - final letter D for door opening to the right.

Art.	la	lb	A	B	h	H	h1	d1 _{6g}	Q	g
O500045.ZM08X1401D	45	60	70	80	8	18	11	M8	14	281
O500045.ZM08X1401S	45	60	70	80	8	18	11	M8	14	281

Galvanised version code Z, final letter S at the end for Left version - final letter D for door opening to the right.

Art.	la	lb	A	B	h	H	h1	d1 _{6g}	Q	g
O500045.ZM08X14ZD	45	60	70	80	8	18	11	M8	14	281
O500045.ZM08X14ZS	45	60	70	80	8	18	11	M8	14	281

O505

ASYMMETRICAL FLAT ZAMAK HINGE WITH THREADED STUD



Materials:

(1) Die-cast zamak alloy (zinc, aluminium and copper alloy).

Surface finish:

Colour:

(01) Black epoxy powder coated (RAL 9011).

(Z) Standard blue galvanising.

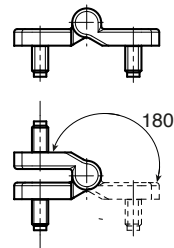
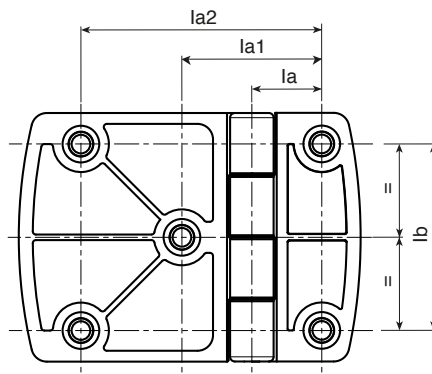
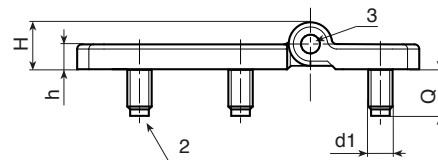
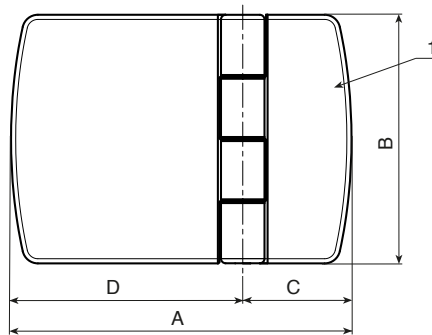
Inserts:

(2) Galvanised steel threaded stud (thread tolerance 6g).

(3) Stainless steel hinge pivot pin (Aisi 304).

Special Requests:

- None.



Black coated version with final code 01.

🛒	Art.	la	la1	la2	lb	A	B	C	E	h	H	d1 _{6g}	Q	🔒
●	O505077.ZM08X1401	22,5	45	77,5	60	110	80	34	76	8	18	M8	14	387

Galvanised version with final letter Z at the end.

🛒	Art.	la	la1	la2	lb	A	B	C	E	h	H	d1 _{6g}	Q	🔒
●	O505077.ZM08X14Z	22,5	45	77,5	60	110	80	34	76	8	18	M8	14	387

O515



C20



BASIC PUNCHED STEEL HINGE WITH THROUGH HOLES

Materials:

(1) Steel punched and bent.

Surface finish:

Colour:

(O1) Black epoxy powder coated (RAL 9011).

(Z) Standard blue galvanising.

Inserts:

(3) Stainless steel hinge pivot pin (Aisi 304).

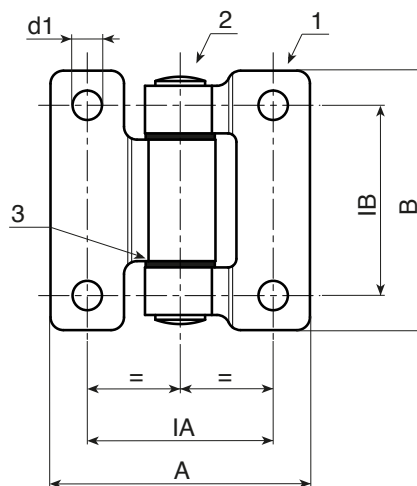
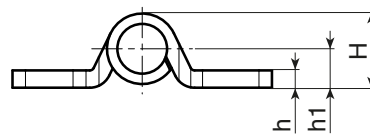
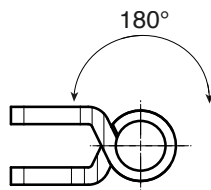
(4) Natural PA6 separating washer inserted between the two knuckles.

Holes:

Through holes obtained by punching.

Special Requests:

- None.



Black coated version with final code O1.

🛒	Art.	la	lb	A	B	h	H	h1	d1	📐
●	O515040.VG06.0501	43	44	60	60	4	17	9	6,5	143

Galvanised version with final letter Z at the end.

🛒	Art.	la	lb	A	B	h	H	h1	d1	📐
●	O515040.VG06.05Z	43	44	60	60	4	17	9	6,5	143



466 ()

Stock availability as % (🛒)
90% (●) - 40% (●) - 5% (●)