



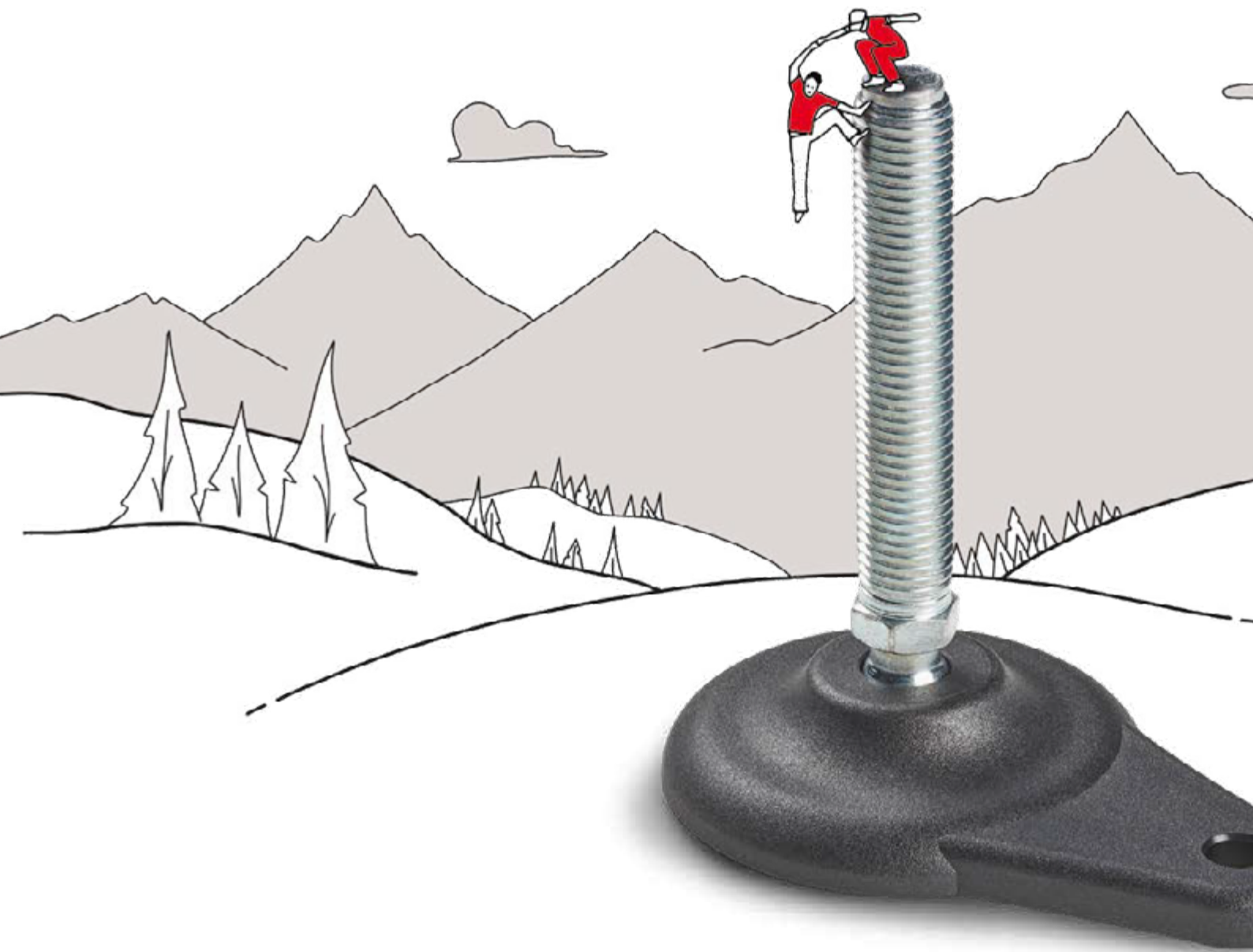
**BOTECO®**

YOUR MECHANICAL COMPONENT

## GROUP - P

### MOUNTING FEET





You need ambition and a **SOLID BASE** to get



**BOTECO**®

# P325



## CONICAL ANTI-VIBRATION MOUNT WITH THREADED STUD

### Materials:

Natural rubber (NR),

### Rubber hardness:

Hardness 55 Shore A (tolerance  $\pm 5\%$ ).

### Surface finish:

Smooth.

### Colour:

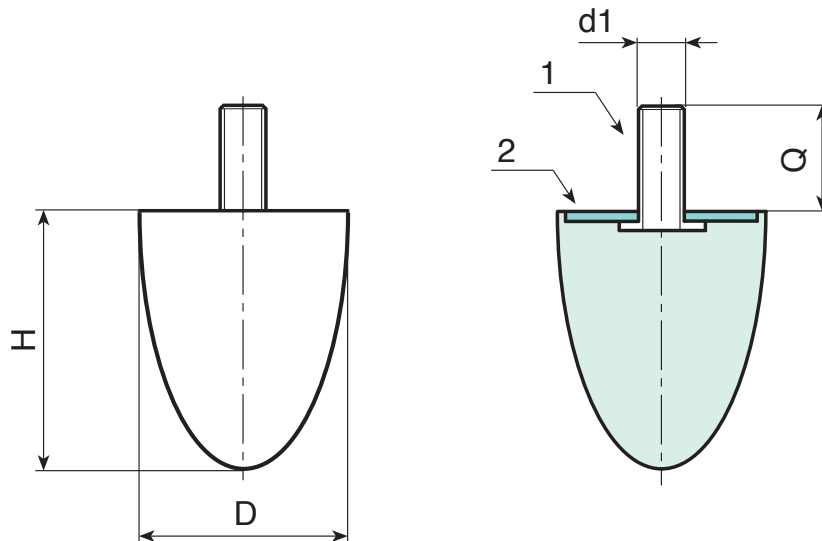
Black (RAL 9011).

### Inserts:

- (1) Galvanised boron steel threaded stud (thread tolerance 6g).
- (2) Galvanised weldable steel washer.

### Special requests:

- Upon request and for a minimum quantity of 100 pieces anti-vibration mounts can be supplied with hardness 45 or 70 Shore A.
- Upon request and for a minimum quantity of 100 pieces anti-vibration mounts can be supplied in different materials:
  - P326= SBR
  - P327= NBR
  - P328= EPDM



Art.	D	H	d1 <sub>6g</sub>	Q	g
P325020.F24M06X1855	20	24	M6	18	10
P325025.F25M06X1855	25	25	M8	18	12
P325030.F36M08X2055	30	36	M8	20	35
P325035.F40M08X2355	35	40	M8	23	47
P325050.F60M10X2855	50	60	M10	28	117
P325050.F67M10X2855	50	67	M10	28	125

# P300



## CYLINDRICAL ANTI-VIBRATION MOUNT WITH DOUBLE THREADED STUD

### Materials:

Natural rubber (NR),

### Rubber hardness:

Hardness 55 Shore A (tolerance  $\pm 5\%$ ).

### Surface finish:

Smooth.

### Colour:

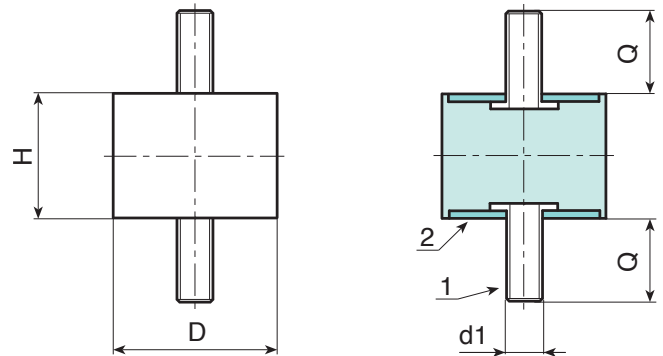
Black (RAL 9011).

### Inserts:

- (1) Galvanised boron steel threaded stud (thread tolerance 6g).
- (2) Galvanised weldable steel washer.

### Special requests:

- Upon request and for a minimum quantity of 100 pieces anti-vibration mounts can be supplied with hardness 45 or 70 Shore A.
- Upon request and for a minimum quantity of 100 pieces anti-vibration mounts can be supplied in different materials.
- P301 = SBR
- P302 = NBR
- P303 = EPDM



🛒	Art.	D	H	d1 <sub>6g</sub>	Q	📦	Compression stiffness (N/mm)
●	P300008.F08M03X1055	8	8	M3	10	1.5	37.9
●	P300015.F10M04X1055	15	10	M4	10	5.5	141.7
●	P300015.F15M04X1055	15	15	M4	10	6.5	56.5
●	P300015.F20M04X1055	15	20	M4	10	6.5	44.6
●	P300020.F15M06X1555	20	15	M6	16	18	122.8
●	P300020.F20M06X1555	20	20	M6	16	19	94
●	P300020.F25M06X1555	20	25	M6	16	20	35.9
●	P300025.F15M06X1855	25	15	M6	18	17	211.5
●	P300025.F20M06X1855	25	20	M6	18	27	130.5
●	P300025.F25M06X1855	25	25	M6	18	28	89.8
●	P300025.F30M08X1855	25	30	M8	18	33	67.2
●	P300030.F15M08X2055	30	15	M8	20	44	456.8
●	P300030.F20M08X2055	30	20	M8	20	48	190.8
●	P300030.F30M08X2055	30	30	M8	20	59	100.3
●	P300040.F20M08X2355	40	20	M8	23	54	295.2
●	P300040.F30M08X2355	40	30	M8	23	92	196
●	P300040.F40M10X2855	40	40	M10	28	116	125.6
●	P300050.F20M10X2855	50	20	M10	28	125	930
●	P300050.F30M10X2855	50	30	M10	28	151	369.2
●	P300050.F40M10X2855	50	40	M10	28	171	242.7
●	P300050.F45M10X2855	50	45	M10	28	182	178.6
●	P300050.F50M10X2855	50	50	M10	28	187	160.9
●	P300060.F30M10X2855	60	30	M10	28	214	585.6
●	P300060.F40M10X2855	60	40	M10	28	244	346.9
●	P300070.F40M10X2855	70	40	M10	28	325	504.8
●	P300075.F30M12X3755	75	30	M12	37	354	961.6
●	P300075.F55M14X3755	75	55	M14	37	465	408.3
●	P300100.F40M16X4255	100	40	M16	42	816	1817.2
●	P300100F.55M16X4255	100	55	M16	42	934	878.9
●	P300100F.75M16X4255	100	75	M16	42	1113	530.1

# P305



## CYLINDRICAL ANTI-VIBRATION MOUNT WITH MALE AND FEMALE THREAD

### Materials:

Natural rubber (NR),

### Rubber hardness:

Hardness 55 Shore A (tolerance  $\pm 5\%$ ).

### Surface finish:

Smooth.

### Colour:

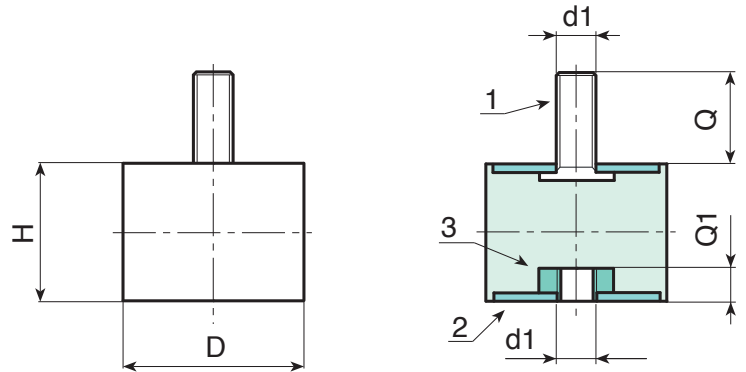
Black (RAL 9011).

### Inserts:

- (1) Galvanised boron steel threaded stud (thread tolerance 6g).
- (2) Galvanised weldable steel washer.
- (3) Galvanised boron steel insert with female threaded hole (thread tolerance 6H).

### Special requests:

- Upon request and for a minimum quantity of 100 pieces anti-vibration mounts can be supplied with hardness 45 or 70 Shore A.
- Upon request and for a minimum quantity of 100 pieces anti-vibration mounts can be supplied in different materials:
  - P306= SBR
  - P307= NBR
  - P308= EPDM



🛒	Art.	D	H	d1 <sub>6g/6H</sub>	Q	Q1	g	Compression stiffness (N/mm)
●	P305010.F15M04X1055	10	15	M4	10	4	5	46.6
●	P305015.F15M04X1055	15	15	M4	10	4	7	57.1
●	P305015.F20M04X1055	15	20	M4	10	4	7.5	45.1
●	P305020.F20M06X1555	20	20	M6	15	6	18	79.2
●	P305020.F25M06X1555	20	25	M6	15	6	21	36.3
●	P305025.F15M06X1855	25	15	M6	18	6	27	213.8
●	P305025.F20M06X1855	25	20	M6	18	6	26	131.9
●	P305025.F30M06X1855	25	30	M6	18	8	37	67.9
●	P305030.F15M08X2055	30	15	M8	20	8	41	461.7
●	P305030.F20M08X2055	30	20	M8	20	8	47	192.9
●	P305030.F30M08X2055	30	30	M8	20	8	52	101.4
●	P305040.F20M08X2355	40	20	M8	23	8	73	298.3
●	P305040.F30M08X2355	40	30	M8	23	8	86	180.5
●	P305040.F40M10X2855	40	40	M10	28	10	113	126.9
●	P305050.F30M10X2855	50	30	M10	28	10	142	373.2
●	P305050.F40M10X2855	50	40	M10	28	10	156	245.3
●	P305050.F45M10X2855	50	45	M10	28	10	172	180.5
●	P305050.F50M10X2855	50	50	M10	28	10	176	164.4
●	P305060.F30M10X2855	60	30	M10	28	10	195	591.9
●	P305060.F40M10X2855	60	40	M10	28	10	233	350.6
●	P305070.F40M10X2855	70	40	M10	28	10	314	510.2
●	P305075.F25M12X3755	75	25	M12	37	12	296	1177.1
●	P305075.F40M12X3755	75	40	M12	37	12	383	598.5
●	P305075.F55M14X3755	75	55	M14	37	14	482	412.7
●	P305100.F40M16X4255	100	40	M16	42	16	768	1478.5
●	P305100.F55M16X4255	100	55	M16	42	16	865	888.3
●	P305100.F75M16X4255	100	75	M16	42	16	1058	541.5

# P310



## CYLINDRICAL ANTI-VIBRATION MOUNT WITH DOUBLE THREADED HOLE

### Materials:

Natural rubber (NR),

### Rubber hardness:

Hardness 55 Shore A (tolerance  $\pm 5\%$ ).

### Surface finish:

Smooth.

### Colour:

Black (RAL 9011).

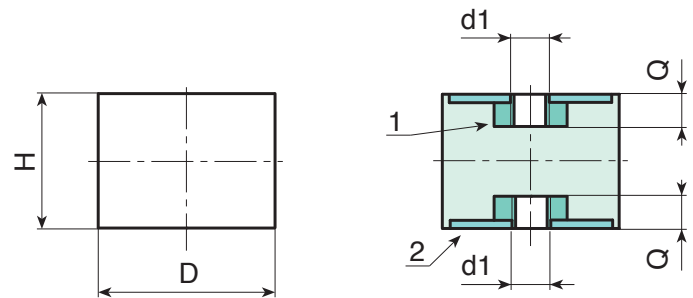
### Inserts:

(1) Galvanised boron steel insert with female threaded hole (thread tolerance 6H).

(2) Galvanised weldable steel washer.

### Special requests:

- Upon request and for a minimum quantity of 100 pieces anti-vibration mounts can be supplied with hardness 45 or 70 Shore A.
- Upon request and for a minimum quantity of 100 pieces anti-vibration mounts can be supplied in different materials:
- P311= SBR
- P312= NBR
- P313= EPDM



🛒	Art.	D	H	d1 <sub>6H</sub>	Q	📦	Compression stiffness (N/mm)
●	P310015.F15M0455	15	15	M4	4	4	66.1
●	P310015.F20M0455	15	20	M4	4	9	52.2
●	P310020.F20M0655	20	20	M6	6	17	91.7
●	P310020.F25M0655	20	25	M6	6	19	42
●	P310025.F20M0655	25	20	M6	6	26	152.7
●	P310025.F25M0655	25	25	M6	6	28	105.1
●	P310025.F30M0655	25	30	M6	6	31	78.7
●	P310030.F20M0855	30	25	M8	8	42	223.3
●	P310030.F30M0855	30	30	M8	8	52	117.4
●	P310030.F40M0855	30	40	M8	8	59	99
●	P310040.F30M0855	40	30	M8	8	83	190.1
●	P310040.F40M1055	40	40	M10	10	102	133.7
●	P310050.F30M1055	50	30	M10	10	132	393
●	P310050.F40M1055	50	40	M10	10	146	258.4
●	P310050.F50M1055	50	50	M10	10	172	171.3
●	P310060.F30M1055	60	30	M10	10	255	685.3
●	P310060.F40M1055	60	40	M10	10	222	405.9
●	P310070.F40M1055	70	40	M10	10	310	590.7
●	P310075.F40M1255	75	40	M12	12	365	671
●	P310100.F40M1655	100	40	M16	16	678	1934.5
●	P310100.F55M1655	100	55	M16	16	855	9035.6
●	P310100.F75M1655	100	75	M16	16	997	564.3

# P315



## CYLINDRICAL ANTI-VIBRATION MOUNT WITH SINGLE THREADED STUD

### Materials:

Natural rubber (NR),

### Rubber hardness:

Hardness 55 Shore A (tolerance  $\pm 5\%$ ).

### Surface finish:

Smooth.

### Colour:

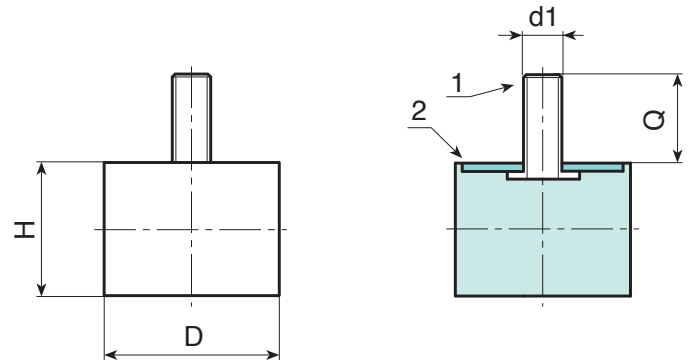
Black (RAL 9011).

### Inserts:

- (1) Galvanised boron steel threaded stud (thread tolerance 6g).
- (2) Galvanised weldable steel washer.

### Special requests:

- Upon request and for a minimum quantity of 100 pieces anti-vibration mounts can be supplied with hardness 45 or 70 Shore A.
- Upon request and for a minimum quantity of 100 pieces anti-vibration mounts can be supplied in different materials:
  - P316= SBR
  - P317= NBR
  - P318= EPDM



🛒	Art.	D	H	d1 <sub>6g</sub>	Q	g	Compression stiffness (N/mm)
●	P315010.F10M04X1055	10	10	M4	10	2	38
●	P315015.F10M04X1055	15	10	M4	10	4	116.6
●	P315015.F15M04X1055	15	15	M4	10	5	48.3
●	P315015.F20M04X1055	15	20	M4	10	6	38.5
●	P315015.F30M04X1055	15	30	M4	10	7	25.7
●	P315020.F15M06X1555	20	15	M6	15	11	95.9
●	P315020.F20M06X1555	20	20	M6	15	14	57
●	P315020.F30M06X1555	20	30	M6	15	20	39.5
●	P315025.F15M06X1855	25	15	M6	18	17	173
●	P315025.F20M06X1855	25	20	M6	18	20	109
●	P315025.F30M06X1855	25	30	M6	18	24	63.9
●	P315030.F15M08X2055	30	15	M8	20	30	293.3
●	P315030.F20M08X2055	30	20	M8	20	34	160
●	P315030.F30M08X2055	30	30	M8	20	41	87
●	P315040.F20M08X2355	40	20	M8	23	53	354.4
●	P315040.F30M08X2355	40	30	M8	23	68	183.3
●	P315040.F40M10X2855	40	40	M10	28	90	120.5
●	P315050.F20M10X2855	50	20	M10	28	87	623.4
●	P315050.F30M10X2855	50	30	M10	28	106	310.2
●	P315050.F40M10X2855	50	40	M10	28	108	204
●	P315060.F40M10X2855	60	40	M10	28	186	319.6
●	P315070.F40M10X2855	70	40	M10	28	254	503.5
●	P315070.F50M10X2855	70	50	M10	28	294	322.4
●	P315075.F25M12X3755	75	25	M12	37	224	1274.6
●	P315075.F40M12X3755	75	40	M12	37	296	528.3
●	P315075.F50M12X3755	75	50	M12	37	340	378.8
●	P315100.F40M16X4255	100	40	M16	42	584	1167.5
●	P315100.F50M16X4255	100	50	M16	42	666	1489

# P320



## CYLINDRICAL ANTI-VIBRATION MOUNT WITH SINGLE THREADED HOLE

### Materials:

Natural rubber (NR),

### Rubber hardness:

Hardness 55 Shore A (tolerance  $\pm 5\%$ ).

### Surface finish:

Smooth.

### Colour:

Black (RAL 9011).

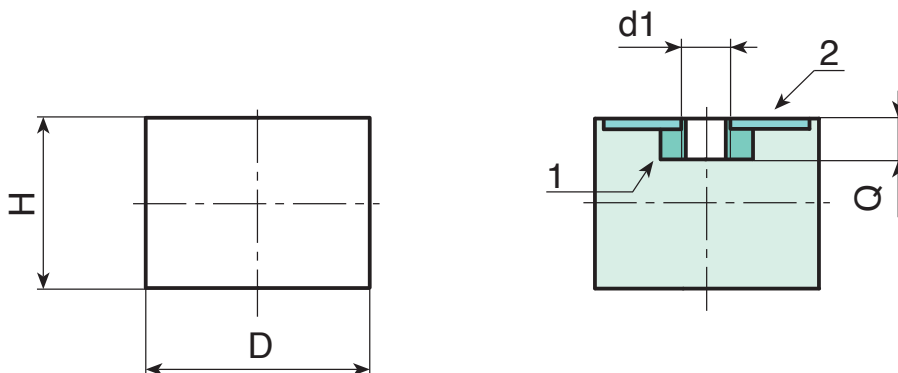
### Inserts:

(1) Galvanised boron steel insert with female threaded hole (thread tolerance 6H).

(2) Galvanised weldable steel washer.

### Special requests:

- Upon request and for a minimum quantity of 100 pieces anti-vibration mounts can be supplied with hardness 45 or 70 Shore A.
- Upon request and for a minimum quantity of 100 pieces anti-vibration mounts can be supplied in different materials:
- P321= SBR
- P322= NBR
- P323= EPDM



Art.	D	H	d1 <sub>6H</sub>	Q	g	Compression stiffness (N/mm)
P320010.F10M0455	10	10	M4	4	1.5	45.6
P320015.F15M0455	15	15	M4	4	5	58.6
P320015.F20M0455	15	20	M4	4	7	46.7
P320020.F15M0655	20	15	M6	6	11	116.3
P320020.F20M0655	20	20	M6	6	12.5	77.5
P320020.F25M0655	20	25	M6	6	14	58.1
P320025.F15M0655	25	15	M6	6	15	209.8
P320025.F20M0655	25	20	M6	6	19	132.2
P320025.F30M0655	25	30	M6	6	23	77.5
P320030.F15M0855	30	15	M8	8	25.5	355.7
P320030.F20M0855	30	20	M8	8	29	210.9
P320030.F30M0855	30	30	M8	8	38	117.4
P320040.F20M0855	40	20	M8	8	48	429.8
P320040.F30M0855	40	30	M8	8	66	222.3
P320040.F40M1055	40	40	M10	10	81	151.6
P320050.F20M1055	50	20	M10	10	75	783.2
P320050.F30M1055	50	30	M10	10	95	376.2
P320050.F40M1055	50	40	M10	10	118	247.4
P320060.F30M1055	60	30	M10	10	141	477.6
P320060.F50M1055	60	50	M10	10	217	247.4
P320070.F40M1055	70	40	M10	10	238	604.2
P320070.F50M1055	70	50	M10	10	246	391
P320075.F25M1255	75	25	M12	12	205	1546.8
P320075.F30M1255	75	30	M12	12	232	125.4
P320075.F40M1255	75	40	M12	12	284	640.7
P320075.F50M1255	75	50	M12	12	334	459.4
P320100.F40M1655	100	40	M16	16	514	1415.9
P320100.F50M1655	100	50	M16	16	620	1805.8



# P330



## SHAPED ANTI-VIBRATION MOUNT WITH DOUBLE THREADED STUD

### Materials:

Natural rubber (NR),

### Rubber hardness:

Hardness 55 Shore A (tolerance  $\pm 5\%$ ).

### Surface finish:

Smooth.

### Colour:

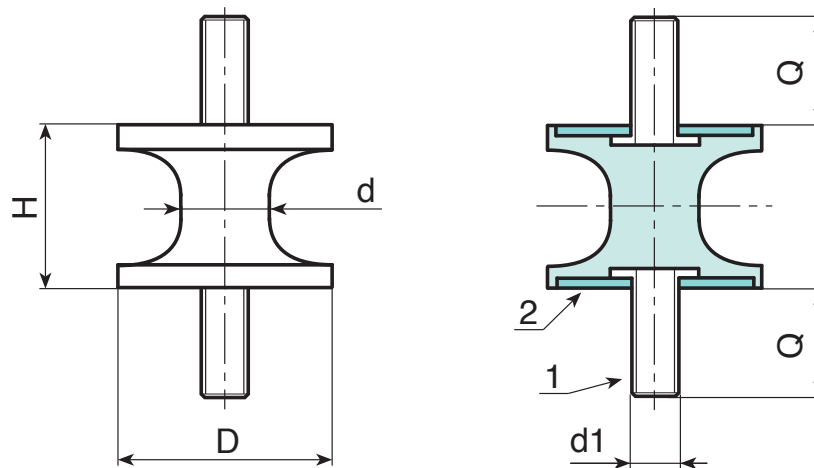
Black (RAL 9011).

### Inserts:

- (1) Galvanised boron steel threaded stud (thread tolerance 6g).
- (2) Galvanised weldable steel washer.

### Special requests:

- Upon request and for a minimum quantity of 100 pieces anti-vibration mounts can be supplied with hardness 45 or 70 Shore A.
- Upon request and for a minimum quantity of 100 pieces anti-vibration mounts can be supplied in different materials:
  - P331= SBR
  - P332= NBR
  - P333= EPDM



Art.	D	H	d1 <sub>6g</sub>	Q
● P330012.F1507M0455	12	15	M4	10
● P330020.F1510M0655	20	15	M6	16
● P330025.F2010M0655	25	20	M6	18
● P330025.F2017M0655	25	20	M6	18
● P330030.F2020M0855	30	20	M8	23
● P330030.F3024M0855	30	20	M8	23
● P330040.F3019M0855	40	30	M8	23
● P330040.F3027M0855	40	30	M8	23
● P330040.F4025M0855	40	40	M8	23
● P330040.F4835M0855	40	48	M8	23
● P330050.F3028M1055	50	30	M10	28
● P330050.F3039M1055	50	30	M10	28
● P330050.F5035M1055	50	50	M10	28
● P330075.F4055M1255	75	40	M12	37
● P330080.F6060M1255	80	60	M12	37

# P335



## SHAPED ANTI-VIBRATION MOUNT WITH MALE AND FEMALE THREAD

### Materials:

Natural rubber (NR),

### Rubber hardness:

Hardness 55 Shore A (tolerance  $\pm 5\%$ ).

### Surface finish:

Smooth.

### Colour:

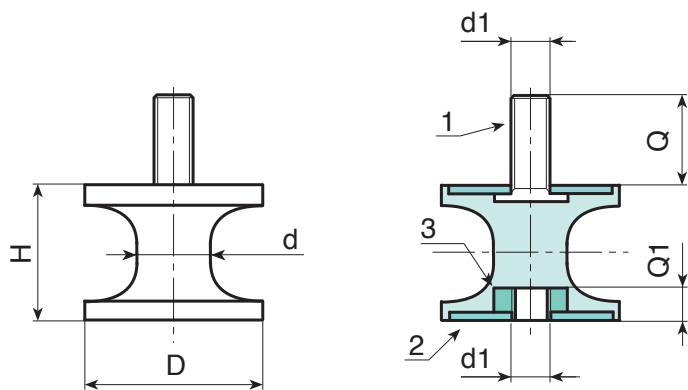
Black (RAL 9011).

### Inserts:

- (1) Galvanised boron steel threaded stud (thread tolerance 6g).
- (2) Galvanised weldable steel washer.
- (3) Galvanised boron steel insert with female threaded hole (thread tolerance 6H).

### Special requests:

- Upon request and for a minimum quantity of 100 pieces anti-vibration mounts can be supplied with hardness 45 or 70 Shore A.
- Upon request and for a minimum quantity of 100 pieces anti-vibration mounts can be supplied in different materials:
  - P336= SBR
  - P337= NBR
  - P338= EPDM



Art.	D	H	d1 <sub>6g/6H</sub>	Q	Q1
P335020.F1510M06X55	20	15	M6	16	6
P335025.F2010M06X55	25	20	M6	18	6
P335025.F2017M06X55	25	20	M6	18	6
P335030.F2020M08X55	30	20	M8	23	8
P335030.F3024M08X55	30	20	M8	23	8
P335040.F3019M08X55	40	30	M8	23	8
P335040.F3027M08X55	40	30	M8	23	8
P335040.F4025M08X55	40	40	M8	23	8
P335040.F4835M08X55	40	48	M8	23	8
P335050.F3028M10X55	50	30	M10	28	10
P335050.F3039M10X55	50	30	M10	28	10
P335050.F5035M10X55	50	50	M10	28	10
P335080.F6060M12X55	80	60	M12	37	12

# P200

## KNURLED MOUNTING FOOT WITH FIXED THREADED STUD



### Materials:

High density polyethylene.

### Surface finish:

Satin.

### Colour:

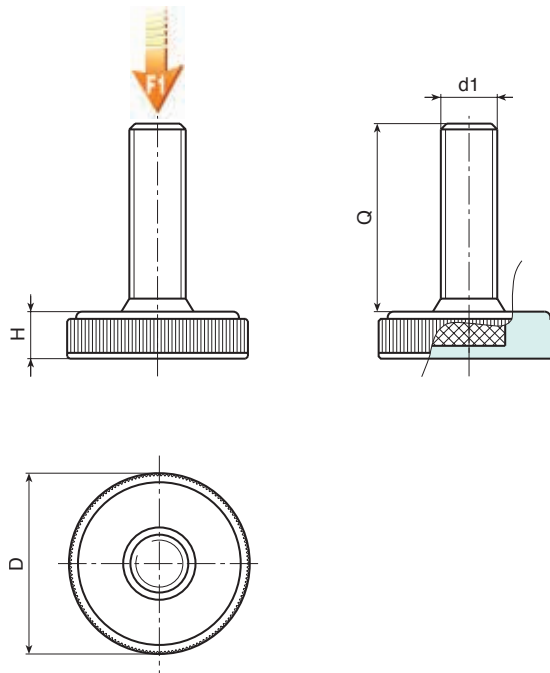
Black (RAL 9011).

### Inserts:

Galvanised steel threaded stud (thread tolerance 6g).

### Special requests:

- Upon request and for special quantities inserts can be supplied with customised lengths (minimum quantity 10,000).



🛒	Art.	D	H	d1 <sub>6g</sub>	Q	g	F1 (N)
●	P20025.TM06X1701	25	6	M6	17	7	1000
●	P20025.TM08X2501	25	6	M8	25	14	1000
●	P20025.TM10X3501	25	6	M10	35	25	1000
●	P20035.TM08X2501	35	8	M8	25	18	1000
●	P20035.TM10X..01	35	8	M10	25-40	25-32	1000
●	P20040.TM10X3501	40	9	M10	35	35	1000
●	P20050.TM10X3501	50	10	M10	35	40	1000
●	P20060.TM10X3501	60	10.5	M10	35	50	1000

Enter the selected stud length in place of the two dots . . in the item code.

Attention: The expressed load limit F1 is lower than the break load by 30% and is intended as static.



# P202

## MOUNTING FOOT WITH FIXED THREADED STUD



### Materials:

High density polyethylene.

### Surface finish:

Satin.

### Colour:

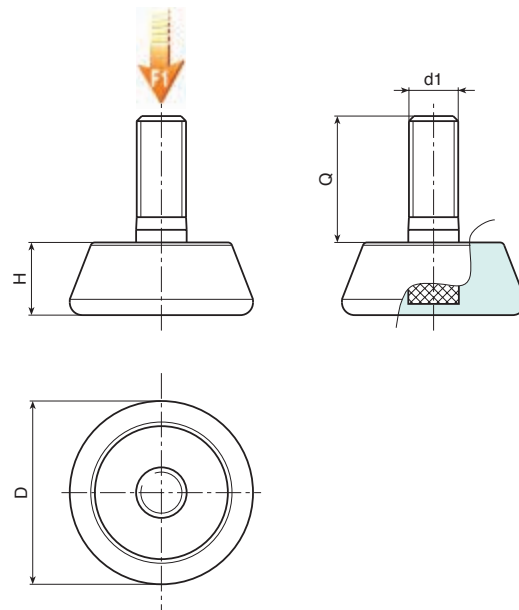
Black (RAL 9011).

### Inserts:

Galvanised steel threaded stud (thread tolerance 6g).

### Special requests:

- Upon request and for special quantities inserts can be supplied with customised lengths (minimum quantity 10,000).



Art.	D	H	d1 <sub>6g</sub>	Q	g	F1 (N)
P20230.TM08X2001	29	11.5	M8	20	17	1000
P20230.TM10X2001	29	11.5	M10	20	20	1000
P20240.TM08X2501	40	13.5	M8	25	29	1000
P20240.TM10X2501	40	13.5	M10	25	33	1000
P20250.TM10X3501	48.5	16.5	M10	35	54	1000
P20250.TM12X3501	48.5	16.5	M12	35	65	1000
P20260.TM10X3701	60.5	17.5	M10	37	78	1000
P20260.TM12X3701	60.5	17.5	M12	37	8	1000

Attention: The expressed load limit F1 is lower than the break load by 30% and is intended as static.



# P201

## MOUNTING FOOT WITH REVOLVING THREADED STUD



**Materials:**

High density polyethylene.

**Surface finish:**

Satin.

**Colour:**

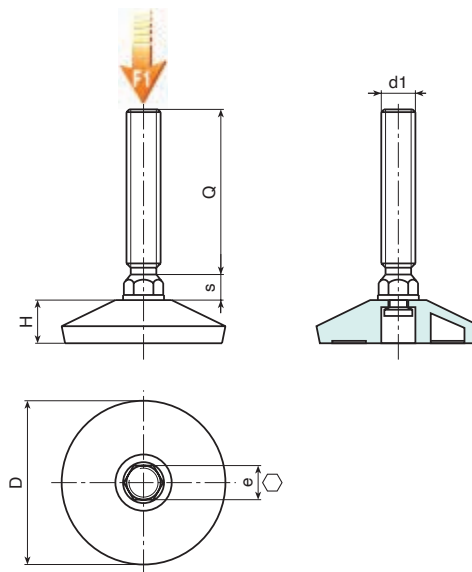
Black (RAL 9011).

**Inserts:**

Revolving threaded stud in galvanised steel (thread tolerance 6g).

**Special requests:**

- Upon request and for special quantities inserts can be supplied with customised lengths (minimum quantity 10,000).



🛒	Art.	D	H	e	s	d1 <sub>6g</sub>	Q	g	F1 (N)
●	P20140.TM10X2501	37	11.5	10	6	M10	25	28	2000
●	P20150.TM10X3001	48.5	12.5	10	6	M10	30	35	2000
●	P20150.TM12X3501	49	13	12	6	M12	35	48	2000

Attention: The expressed load limit F1 is lower than the break load by 30% and is intended as static.



# P203

## MOUNTING FOOT WITH REVOLVING THREADED STUD



### Materials:

High density polyethylene.

### Surface finish:

Satin.

### Colour:

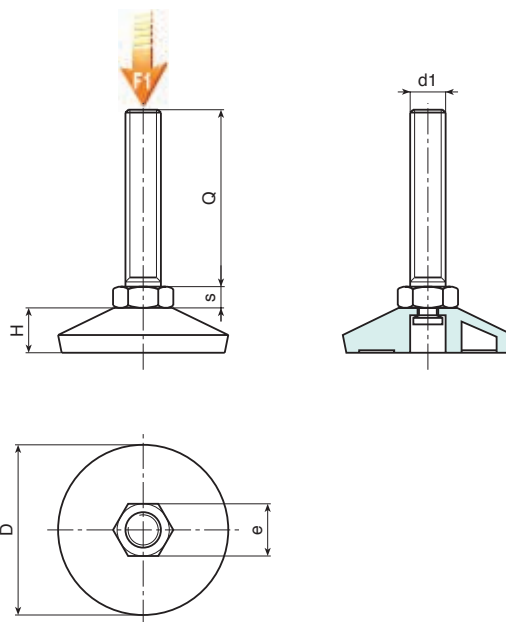
Black (RAL 9011).

### Inserts:

Revolving threaded stud in galvanised steel (thread tolerance 6g).

### Special requests:

- None.



Art.	D	H	e	s	d1 <sub>6g</sub>	Q	g	F1 (N)
P20340.TM10X..01	37	11.5	17	6.5	M10	40-60	39-49	2000
P20350.TM10X..01	49	13	17	6.5	M10	40-60	44-54	2000

Enter the selected stud length in place of the two dots . . in the item code.

Attention: The expressed load limit F1 is lower than the break load by 30% and is intended as static.



# P820



## MOUNTING AND THRUST FOOT WITH THREADED AND ARTICULATED STEM

### Materials:

Reinforced polyamide.  
Resistant to oils and greases.

### Surface finish:

Satin.

### Colour:

Black (RAL 9011).

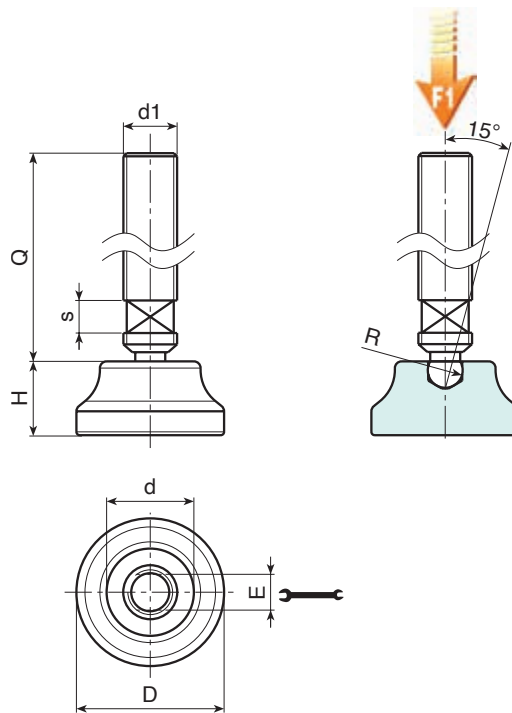
### Inserts:

Galvanized steel threaded stem with ball joint (thread tolerance 6g), with milled seat for adjustment wrench.

### Special requests:

- Upon request and for special quantities inserts can be supplied with customised lengths.
- Upon request and for special quantities inserts can be supplied in different materials.
- Upon request and for special quantities the foot can be supplied in Orange (RAL 2004).

**Notes:** The base of mounting foot P820 can be used in combination with other handgrips in order to obtain a greater closing surface or thrust.



🛒	Art.	D	H	d	E	s	R	d1 <sub>6g</sub>	Q	g	F1 (kN)
●	P820019.TM08X..01	19	10	13	6	6	6.1	M8	50-90	20-32	4
●	P820022.TM08X..01	22	11	15	6	6	6.1	M8	50-90	21-33	4
●	P820022.TM10X..01	22	11	15	8	6	7.8	M10	50-90	31-50	4
●	P820026.TM08X..01	26	12.5	18	6	6	6.1	M8	50-90	24-36	4
●	P820026.TM10X..01	26	12.5	18	8	6	7.8	M10	50-90	34-53	4
●	P820026.TM12X..01	26	12.5	18	10	6	9.4	M12	50-90	46-73	4

Enter the selected stud length in place of the two dots . in the item code.

Customised stud length available for a minimum of 150 pieces.

Attention: The expressed load limit F1 is lower than the break load by 30% and is intended as static.



# P821



## SOLID MOUNTING AND THRUST FOOT WITH NON-SLIP BASE

### Materials:

Reinforced polyamide.  
Resistant to oils and greases.

### Surface finish:

Satin.

### Colour:

Black (RAL 9011).

### Inserts:

Galvanized steel threaded stem with ball joint (thread tolerance 6g), with milled seat for adjustment wrench.

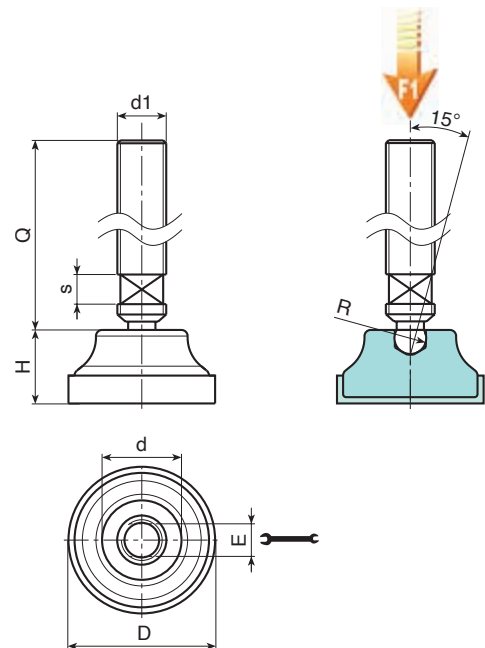
### Non-slip base:

Non-slip base in thermoplastic rubber SBS 75 Shore, only in black RAL 9011.  
Push-fit assembly.

### Special requests:

- Upon request and for special quantities inserts can be supplied with customised lengths.
- Upon request and for special quantities inserts can be supplied in different materials.
- Upon request and for special quantities the foot can be supplied in Orange (RAL 2004).

Notes: The base of mounting foot P821 can be used in combination with other handgrips in order to obtain a greater closing surface or thrust.



Art.	D	H	d	E	s	R	d1 <sub>6g</sub>	Q	g	F1 (kN)
● P821019.TM08X..01	21	12	13	6	6	6.1	M8	50-90	21-33	4
● P821022.TM08X..01	24	13	15	6	6	6.1	M8	50-90	22-34	4
● P821022.TM10X..01	24	13	15	8	6	7.8	M10	50-90	32-51	4
● P821026.TM08X..01	28	14.5	18	6	6	6.1	M8	50-90	26-38	4
● P821026.TM10X..01	28	14.5	18	8	6	7.8	M10	50-90	36-55	4
● P821026.TM12X..01	28	14.5	18	10	6	9.4	M12	50-90	48-75	4

Enter the selected stud length in place of the two dots . . in the item code.

Customised stud length available for a minimum of 150 pieces.

Attention: The expressed load limit F1 is lower than the break load by 30% and is intended as static.



Stock availability as % (🛒)  
90% (●) - 40% (●) - 5% (●)



# P814



## SOLID MOUNTING FOOT WITH THREADED AND ARTICULATED STEM

### Materials:

Reinforced polyamide.  
Resistant to oils and greases.

### Surface finish:

Satin.

### Colour:

Black (RAL 9011).

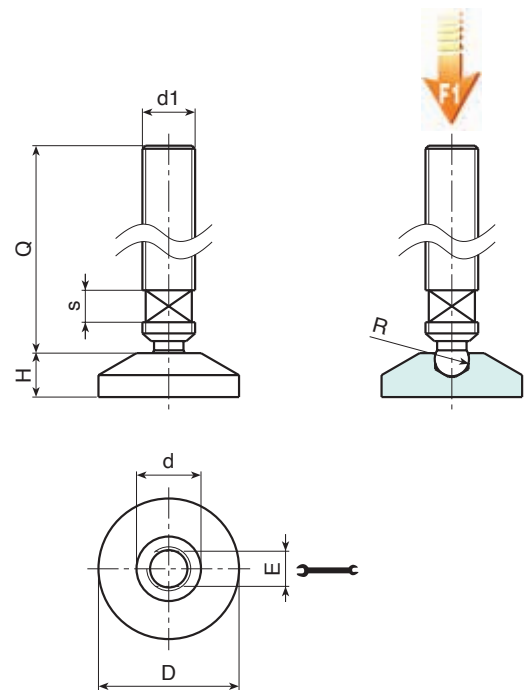
### Inserts:

Galvanized steel threaded stem with ball joint (thread tolerance 6g), with milled seat for adjustment wrench.

**Notes:** The base of mounting foot P814 can be used in combination with other handgrips in order to obtain a greater closing surface or thrust.

### Special requests:

- Upon request and for special quantities inserts can be supplied with customised lengths.
- Upon request and for special quantities the foot can be supplied in Orange (RAL 2004).



Art.	D	H	d	E	s	R	d1	Q	**non tradotto**	F1 (N)
P814032.TM10X..01	32	10	15.5	6	6	8	M10	50-90	32-53	4000
P814032.TM12X..01	32	10	15.5	6	6	8	M12	50-90	50-90	4000

Enter the selected stud length in place of the two dots . in the item code.

Customised stud length available for a minimum of 150 pieces.

Attention: The expressed load limit F1 is lower than the break load by 30% and is intended as static.



Stock availability as % (🛒)  
90% (●) - 40% (●) - 5% (●)

# P830

**NEW**

+135°  
-30°

PA6  
+G.F.

UL94  
HB

RoHS  
COMPLIANT

## MOUNTING FOOT WITH BALL JOINT (R.24), HEXAGONAL BASE AND THREADED HOLE

### Materials:

Reinforced polyamide.  
Resistant to oils and greases.

### Surface finish:

Satin.

### Colour:

Black (RAL 9011).

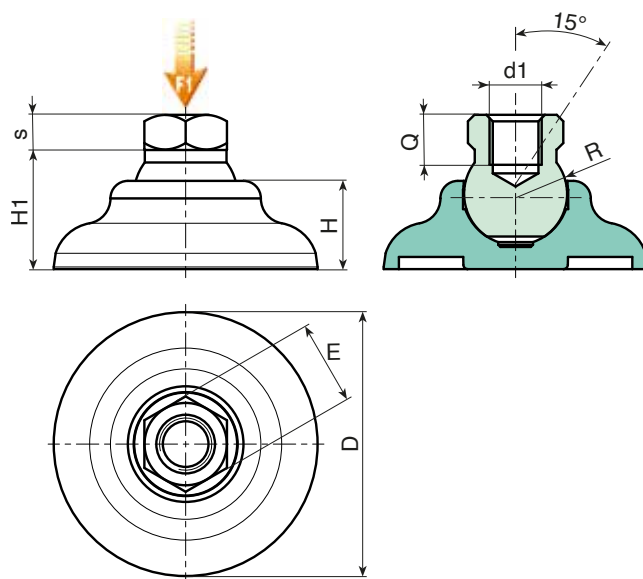
### Inserts:

**P830:**  
Galvanised steel ball joint with threaded hole (ball R.24) with hexagonal base (thread tolerance 6H).

**P830CIN:**  
Stainless steel (Aisi 303) ball joint with threaded hole (ball R.24) with hexagonal base (thread tolerance 6H).

### Special requests:

- Upon request and for special quantities the foot can be supplied in Orange (RAL 2004).



### Version P830: with galvanised steel insert

🛒	Art.	D	H	Ht	E	s	R	d1 <sub>6H</sub>	Q	g	F1 (kN)
●	P83060.TM1201	60	20	27,5	19	8	24	M12	11,5	--	17
●	P83060.TM1601	60	20	27,5	19	8	24	M16	11,5	--	17

Attention: The expressed load limit F1 is lower than the break load by 30% and is intended as static.

**INOX**

### Version P830CIN: with stainless steel insert (Aisi 303)

🛒	Art.	D	H	Ht	E	s	R	d1 <sub>6H</sub>	Q	g	F1 (kN)
●	P83060.TM1201CIN	60	20	27,5	19	8	24	M12	11,5	--	17
●	P83060.TM1601CIN	60	20	27,5	19	8	24	M16	11,5	--	17

Attention: The expressed load limit F1 is lower than the break load by 30% and is intended as static.



# P900



## SMALL MOUNTING FOOT WITH STEEL ARTICULATED STEM TYPE A - BALL R12.4

### Materials:

Reinforced polyamide.  
Resistant to oils and greases.

### Surface finish:

Satin.

### Colour:

Black (RAL 9011).

### Inserts:

#### P900:

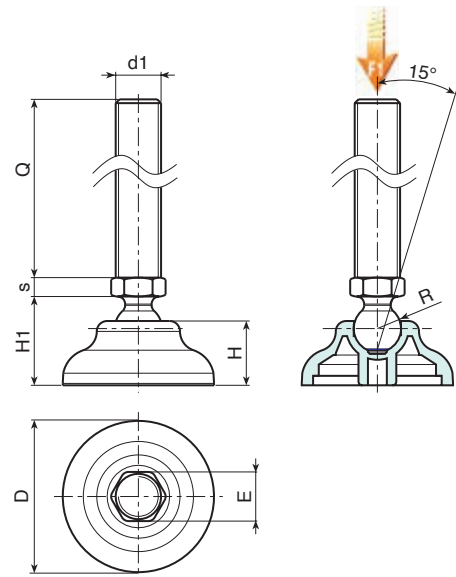
Galvanised steel threaded and articulated stem (ball R.12.4) with hexagonal base (thread tolerance 6g).

#### P900CIN:

Stainless steel threaded and articulated stem (ball R.12.4) with hexagonal base (Aisi 303) (thread tolerance 6g).

### Special requests:

- Upon request and for special quantities inserts can be supplied with customised lengths.
- Upon request and for special quantities the foot can be supplied in Orange (RAL 2004).



### Version P900: Mounting foot with stem type A (with hexagonal base) and ball R12.4

Art.	D	H	H1	E	s	R	d1 <sub>6g</sub>	Q	g	F1 (kN)
● P90040.TM08X..01	40	17	23	13	5	12.4	M8	45-70-90	40-47-54	10
● P90040.TM10X..01	40	17	23	13	5	12.4	M10	45-70-100	48-60-75	10
● P90040.TM12X..01	40	17	23	13	5	12.4	M12	45-70-100	58-75-97	10
● P90050.TM08X..01	50	18	24	13	5	12.4	M8	45-70-90	46-53-60	10
● P90050.TM10X..01	50	18	24	13	5	12.4	M10	45-70-100	54-63-77	10
● P90050.TM12X..01	50	18	24	13	5	12.4	M12	45-70-100	64-78-99	10
● P90060.TM08X..01	60	20	26	13	5	12.4	M8	45-70-90	58-66-73	10
● P90060.TM10X..01	60	20	26	13	5	12.4	M10	45-70-100	68-80-95	10
● P90060.TM12X..01	60	20	26	13	5	12.4	M12	45-70-100	78-96-117	10

### Version P900CIN: Mounting foot with stem type A (with hexagonal base) and ball R12.4 - stainless steel

INOX

Art.	D	H	H1	E	s	R	d1 <sub>6g</sub>	Q	g	F1 (kN)
● P90040.TM08X..01CIN	40	17	23	13	5	12.4	M8	45-70	40-47	10
● P90040.TM10X..01CIN	40	17	23	13	5	12.4	M10	45-70	48-60	10
● P90040.TM12X..01CIN	40	17	23	13	5	12.4	M12	45-70-100	58-75-99	10
● P90050.TM08X..01CIN	50	18	24	13	5	12.4	M8	45-70	46-53	10
● P90050.TM10X..01CIN	50	18	24	13	5	12.4	M10	45-70	54-63	10
● P90050.TM12X..01CIN	50	18	24	13	5	12.4	M12	45-70-100	64-78-102	10
● P90060.TM08X..01CIN	60	20	26	13	5	12.4	M8	45-70	58-66	10
● P90060.TM10X..01CIN	60	20	26	13	5	12.4	M10	45-70	68-80	10
● P90060.TM12X..01CIN	60	20	26	13	5	12.4	M12	45-70-100	78-96-120	10

Attention: The expressed load limit F1 is lower than the break load by 30% and is intended as static.

Enter the selected stud length in place of the two dots . . in the item code. Customised stud length available for a minimum of 100 pieces.



Stock availability as % (🛒)  
90% (●) - 40% (●) - 5% (●)

# P905



## SMALL MOUNTING FOOT WITH STEEL ARTICULATED STEM TYPE A - BALL R15

### Materials:

Reinforced polyamide.  
Resistant to oils and greases.

### Surface finish:

Satin.

### Colour:

Black (RAL 9011).

### Inserts:

#### Version P905:

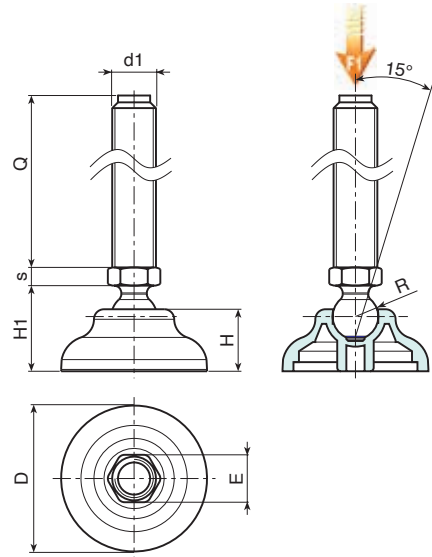
Galvanised steel threaded and articulated stem (ball R.15) with hexagonal base (thread tolerance 6g).

#### Version P905CIN:

Stainless steel threaded and articulated stem (ball R.15) with hexagonal base (Aisi 303) (thread tolerance 6g).

### Special requests:

- Upon request and for special quantities inserts can be supplied with customised lengths.
- Upon request and for special quantities the foot can be supplied in Orange (RAL 2004).



### Version P905: Mounting foot with stem type A (with hexagonal base) and ball R15

Art.	D	H	H1	E	s	R	d1 <sub>6g</sub>	Q	g	F1 (kN)
P90540.TM12X..01	40	17	23	16	6.5	15	M12	50-70-90-110	84-97-110-123	13
P90540.TM14X..01	40	17	23	16	6.5	15	M14	50-70-90-110-150	112-136-171-184-210	13
P90540.TM16X..01	40	17	23	16	6.5	15	M16	50-70-90-110-130-150-170-190	131-163-195-227-259-295-323-365	13
P90550.TM12X..01	50	18	24	16	6.5	15	M12	50-70-90-110	88-101-114-127	13
P90550.TM14X..01	50	18	24	16	6.5	15	M14	50-70-90-110-150	97-116-134-152-189	13
P90550.TM16X..01	50	18	24	16	6.5	15	M16	50-70-90-110-130-150-170-190	110-137-164-191-218-245-272-299	13
P90560.TM12X..01	60	20	26	16	6.5	15	M12	50-70-90-110	96-109-122-135	13
P90560.TM14X..01	60	20	26	16	6.5	15	M14	50-70-90-110-150	105-124-142-160-197	13
P90560.TM16X..01	60	20	26	16	6.5	15	M16	50-70-90-110-130-150-170-190	118-145-172-199-226-253-280-307	13

### Version P905CIN: Mounting foot with stem type A (with hexagonal base) and ball R12.4 - stainless steel

INOX

Art.	D	H	H1	E	s	R	d1 <sub>6g</sub>	Q	g	F1 (kN)
P90540.TM12X..01CIN	40	17	23	16	6.5	15	M12	70-90-110	97-110-121	13
P90540.TM14X..01CIN	40	17	23	16	6.5	15	M14	70-110-130	112-148-165	13
P90540.TM16X..01CIN	40	17	23	16	6.5	15	M16	50-70-90-110-130-150-170-190	106-133-160-187-211-240-268-295	13
P90550.TM12X..01CIN	50	18	24	16	6.5	15	M12	70-90-110	101-114-125	13
P90550.TM14X..01CIN	50	18	24	16	6.5	15	M14	70-110-130	116-152-170	13
P90550.TM16X..01CIN	50	18	24	16	6.5	15	M16	50-70-90-110-130-150-170-190	110-137-164-191-215-245-272-299	13
P90560.TM12X..01CIN	60	20	26	16	6.5	15	M12	70-90-110	109-122-133	13
P90560.TM14X..01CIN	60	20	26	16	6.5	15	M14	70-110-130	124-160-178	13
P90560.TM16X..01CIN	60	20	26	16	6.5	15	M16	50-70-90-110-130-150-170-190	118-145-172-199-226-253-280-307	13

Attention: The expressed load limit F1 is lower than the break load by 30% and is intended as static.

Enter the selected stud length in place of the two dots . . in the item code. Customised stud length available for a minimum of 100 pieces.



Stock availability as % (🛒)  
90% (●) - 40% (●) - 5% (●)

# P906



## SMALL MOUNTING FOOT WITH STEEL ARTICULATED STEM TYPE B - BALL R12.4

### Materials:

Reinforced polyamide.  
Resistant to oils and greases.

### Surface finish:

Satin.

### Colour:

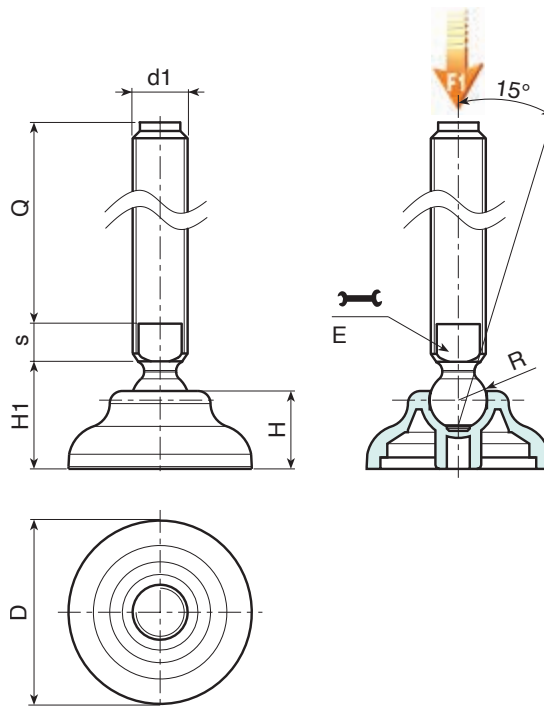
Black (RAL 9011).

### Inserts:

Galvanised steel threaded and articulated stem (ball R.12.4) with milled seat for wrench (type B) (thread tolerance 6g).

### Special requests:

- Upon request and for special quantities inserts can be supplied with customised lengths.
- Upon request and for special quantities the foot can be supplied in Orange (RAL 2004).



### Version P906: Mounting foot with stem type B (with milled seat for wrench) and ball R12.4

Art.	D	H	H1	E	s	R	d1 <sub>6g</sub>	Q		F1 (kN)
P90660.TM16X..01	60	20	26	13	7	12.4	M16	70-90-110-130-150-170	126-152-178-204-230-256	10

Attention: The expressed load limit F1 is lower than the break load by 30% and is intended as static.

Enter the selected stud length in place of the two dots . . in the item code. Customised stud length available for a minimum of 100 pieces.

# P907



## SMALL MOUNTING FOOT WITH STEEL ARTICULATED STEM TYPE B - BALL R15

### Materials:

Reinforced polyamide.  
Resistant to oils and greases.

### Surface finish:

Satin.

### Colour:

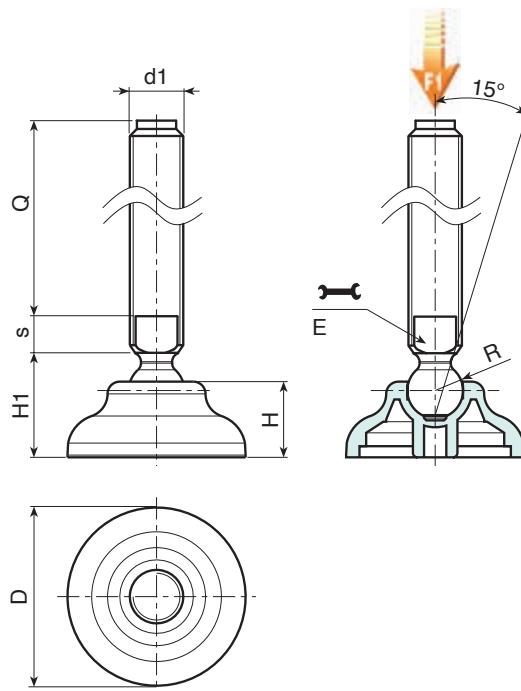
Black (RAL 9011).

### Inserts:

Galvanised steel threaded and articulated stem (ball R.15) with milled seat for wrench (type B) (thread tolerance 6g).

### Special requests:

- Upon request and for special quantities inserts can be supplied with customised lengths.
- Upon request and for special quantities the foot can be supplied in Orange (RAL 2004).



### Version P907: Mounting foot with stem type B (with milled seat for wrench) and ball R15

Art.	D	H	H1	E	s	R	d1 <sub>6g</sub>	Q	g	F1 (kN)
P90760.TM20X..01	60	20	26	16	7	15	M20	50-70-90-110-130-150-170-190-210	145-185-225-267-306-346-386-426-466	13

Enter the selected stud length in place of the two dots . . in the item code. Customised stud length available for a minimum of 100 pieces.  
Attention: The expressed load limit F1 is lower than the break load by 30% and is intended as static.



# P901



## SMALL MOUNTING FOOT WITH STEEL ARTICULATED STEM TYPE A - BALL R12.4 AND NON-SLIP BASE

### Materials:

Reinforced polyamide.  
Resistant to oils and greases.

### Surface finish:

Satin.

### Colour:

Black (RAL 9011).

### Inserts:

#### Version P901:

Galvanised steel threaded and articulated stem (ball R.12.4) with hexagonal base (thread tolerance 6g).

#### Version P901CIN:

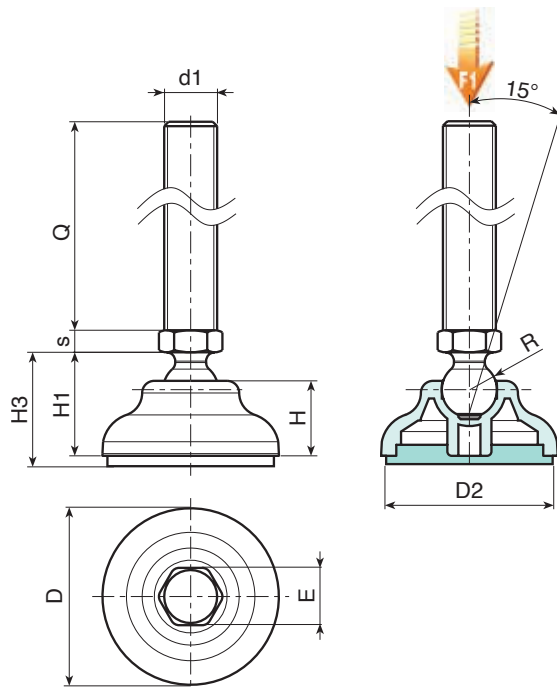
Stainless steel threaded and articulated stem (ball R.12.4) with hexagonal base (Aisi 303) (thread tolerance 6g).

### Non-slip base:

Non-slip base in thermoplastic rubber SBS 75 Shore, black RAL 9011.  
Resistant to oils and greases.

### Special requests:

- Upon request and for special quantities inserts can be supplied with customised lengths.
- Upon request and for special quantities the foot can be supplied in Orange (RAL 2004).



### Version P901: Mounting foot with stem type A (with hexagonal base) and ball R12.4 - with SBS non-slip base

Art.	D	H	H1	E	s	R	d1 <sub>6g</sub>	Q	g	F1 (kN)
P90140.TM08X..01	40	17	23	13	5	12.5	M8	45-70-90	44-51-57	10
P90140.TM10X..01	40	17	23	13	5	12.5	M10	45-70-100	52-64-79	10
P90140.TM12X..01	40	17	23	13	5	12.5	M12	45-70-100	62-79-101	10
P90150.TM08X..01	50	18	24	13	5	12.5	M8	45-70-90	66-74-82	10
P90150.TM10X..01	50	18	24	13	5	12.5	M10	45-70-100	76-88-103	10
P90150.TM12X..01	50	18	24	13	5	12.5	M12	45-70-100	86-104-125	10
P90160.TM08X..01	60	20	26	13	5	12.5	M8	45-70-90	52-59-65	10
P90160.TM10X..01	60	20	26	13	5	12.5	M10	45-70-100	60-69-83	10
P90160.TM12X..01	60	20	26	13	5	12.5	M12	45-70-100	70-84-105	10

### Version P901CIN: Foot with stem type A (with hexagonal base) - ball R12.4 - stainless steel - with SBS non-slip base

INOX

Art.	D	H	H1	E	s	R	d1 <sub>6g</sub>	Q	g	F1 (kN)
P90140.TM08X..01CIN	40	17	23	13	5	12.5	M8	45-70	40-47	10
P90140.TM10X..01CIN	40	17	23	13	5	12.5	M10	45-70	48-60	10
P90140.TM12X..01CIN	40	17	23	13	5	12.5	M12	45-70-100	58-75-97	10
P90150.TM08X..01CIN	50	18	24	13	5	12.5	M8	45-70	46-53	10
P90150.TM10X..01CIN	50	18	24	13	5	12.5	M10	45-70	54-63	10
P90150.TM12X..01CIN	50	18	24	13	5	12.5	M12	45-70-100	64-78-99	10
P90160.TM08X..01CIN	60	20	26	13	5	12.5	M8	45-70	58-66	10
P90160.TM10X..01CIN	60	20	26	13	5	12.5	M10	45-70	68-80	10
P90160.TM12X..01CIN	60	20	26	13	5	12.5	M12	45-70-100	78-96-117	10

Enter the selected stud length in place of the two dots . . in the item code. Customised stud length available for a minimum of 100 pieces.

Attention: The expressed load limit F1 is lower than the break load by 30% and is intended as static.



# P908



## SMALL MOUNTING FOOT WITH STEEL STEM TYPE A - BALL R15 AND NON-SLIP BASE

### Materials:

Reinforced polyamide. Resistant to oils and greases.

### Surface finish:

Satin.

### Colour:

Black (RAL 9011).

### Inserts:

#### Version P908:

Galvanised steel threaded and articulated stem (ball R.15) with hexagonal base (thread tolerance 6g).

#### Version P908CIN:

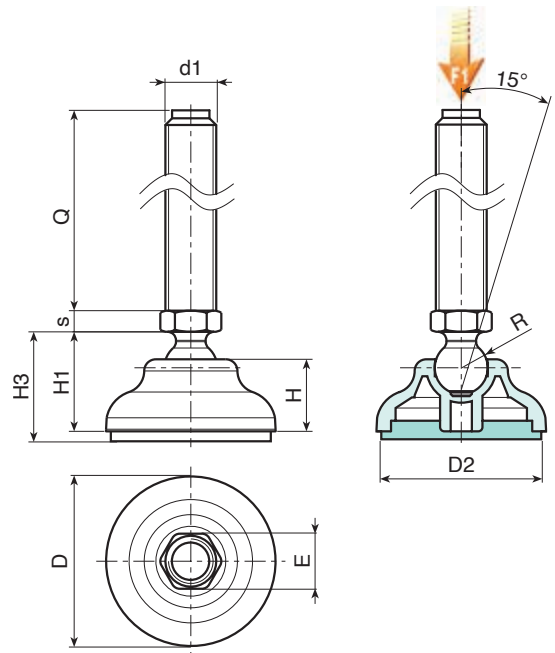
Stainless steel threaded and articulated stem (ball R.15) with hexagonal base (Aisi 303) (thread tolerance 6g).

### Non-slip base:

Non-slip base in thermoplastic rubber SBS 75 Shore, black RAL 9011. Resistant to oils and greases.

### Special requests:

- Upon request and for special quantities inserts can be supplied with customised lengths.
- Upon request and for special quantities the foot can be supplied in Orange (RAL 2004).



### Version P908: Mounting foot with stem type A (with hexagonal base) and ball R15 - with SBS non-slip base

Art.	D	D2	H	H1	H3	E	s	R	d1 <sub>6g</sub>	Q	g	F1 (kN)
P90840.TM12X..01	40	34	17	23	26	16	6.5	15	M12	50-70-90-110	80-93-106-119	13
P90840.TM14X..01	40	34	17	23	26	16	6.5	15	M14	50-70-90-110-150	95-119-154-167-193	13
P90840.TM16X..01	40	34	17	23	26	16	6.5	15	M16	50-70-90-110-130-150-170-190	114-146-178-210-242-274-306-348	13
P90850.TM12X..01	50	43	18	24	27	16	6.5	15	M12	50-70-90-110	86-99-112-125	13
P90850.TM14X..01	50	43	18	24	27	16	6.5	15	M14	50-70-90-110-150	101-125-160-173-199	13
P90850.TM16X..01	50	43	18	24	27	16	6.5	15	M16	50-70-90-110-130-150-170-190	120-152-184-216-248-280-312-354	13
P90860.TM12X..01	60	53	20	26	29	16	6.5	15	M12	50-70-90-110	109-122-135-148	13
P90860.TM14X..01	60	53	20	26	29	16	6.5	15	M14	50-70-90-110-150	124-148-183-196-222	13
P90860.TM16X..01	60	53	20	26	29	16	6.5	15	M16	50-70-90-110-130-150-170-190	143-175-207-239-271-303-335-377	13

### Version P908CIN: Foot with stem type A (with hexagonal base) - ball R15 - stainless steel - with SBS non-slip base

INOX

Art.	D	H	H1	E	s	R	d1 <sub>6g</sub>	Q	g	F1 (kN)
P90840.TM12X..01CIN	40	17	23	16	6.5	15	M12	70-90-110	93-106-119	13
P90840.TM14X..01CIN	40	17	23	16	6.5	15	M14	70-110-130	119-167-180	13
P90840.TM16X..01CIN	40	17	23	16	6.5	15	M16	50-70-90-110-130-150-170-190	114-146-178-210-242-274-306-348	13
P90850.TM12X..01CIN	50	18	24	16	6.5	15	M12	70-90-110	99-12-125	13
P90850.TM14X..01CIN	50	18	24	16	6.5	15	M14	70-110-130	125-173-186	13
P90850.TM16X..01CIN	50	18	24	16	6.5	15	M16	50-70-90-110-130-150-170-190	120-152-184-216-248-280-312-354	13
P90860.TM12X..01CIN	60	20	26	16	6.5	15	M12	70-90-110	122-135-148	13
P90860.TM14X..01CIN	60	20	26	16	6.5	15	M14	70-110-130	148-196-209	13
P90860.TM16X..01CIN	60	20	26	16	6.5	15	M16	50-70-90-110-130-150-170-190	143-175-207-239-271-303-335-377	13

Enter the selected stud length in place of the two dots . . in the item code. Customised stud length available for a minimum of 100 pieces.

Attention: The expressed load limit F1 is lower than the break load by 30% and is intended as static.



Stock availability as % (🛒)  
90% (●) - 40% (●) - 5% (●)



# P909



## SMALL MOUNTING FOOT WITH STEEL ARTICULATED STEM TYPE B - BALL R12.4 AND NON-SLIP BASE

### Materials:

Reinforced polyamide. Resistant to oils and greases.

### Surface finish:

Satin.

### Colour:

Black (RAL 9011).

### Inserts:

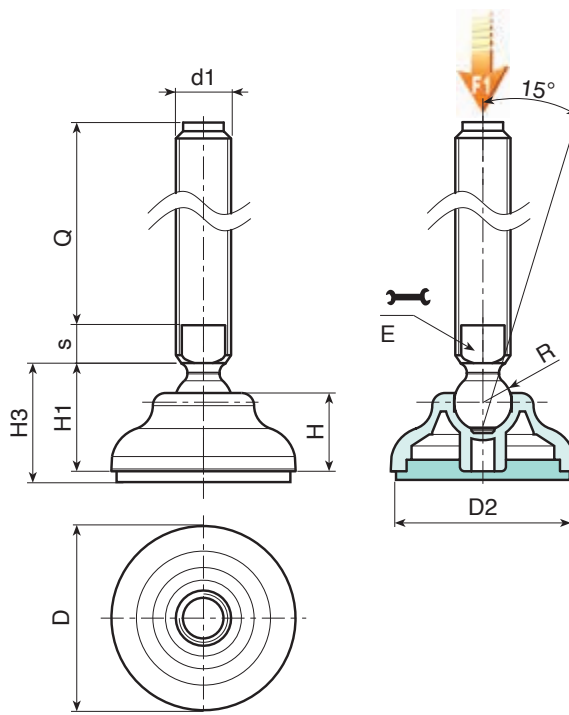
Galvanised steel threaded and articulated stem (ball R.12.4) with milled seat for wrench (type B) (thread tolerance 6g).

### Non-slip base:

Non-slip base in thermoplastic rubber SBS 75 Shore, black RAL 9011. Resistant to oils and greases.

### Special requests:

- Upon request and for special quantities inserts can be supplied with customised lengths.
- Upon request and for special quantities the foot can be supplied in Orange (RAL 2004).



Version P909: Mounting foot with stem type B (with milled seat for wrench) and ball R12.4 - with SBS non-slip base

Art.	D	H	H1	E	s	R	d1 <sub>6g</sub>	Q		F1 (kN)
P90960.TM16X..01	60	20	26	13	7	12.5	M16	70-90-110-130-150-170	139-165-191-217-243-270	13

Enter the selected stud length in place of the two dots . . in the item code. Customised stud length available for a minimum of 100 pieces.

Attention: The expressed load limit F1 is lower than the break load by 30% and is intended as static.



# P910



## SMALL MOUNTING FOOT WITH STEEL ARTICULATED STEM TYPE B - BALL R15 AND NON-SLIP BASE

### Materials:

Reinforced polyamide. Resistant to oils and greases.

### Surface finish:

Satin.

### Colour:

Black (RAL 9011).

### Inserts:

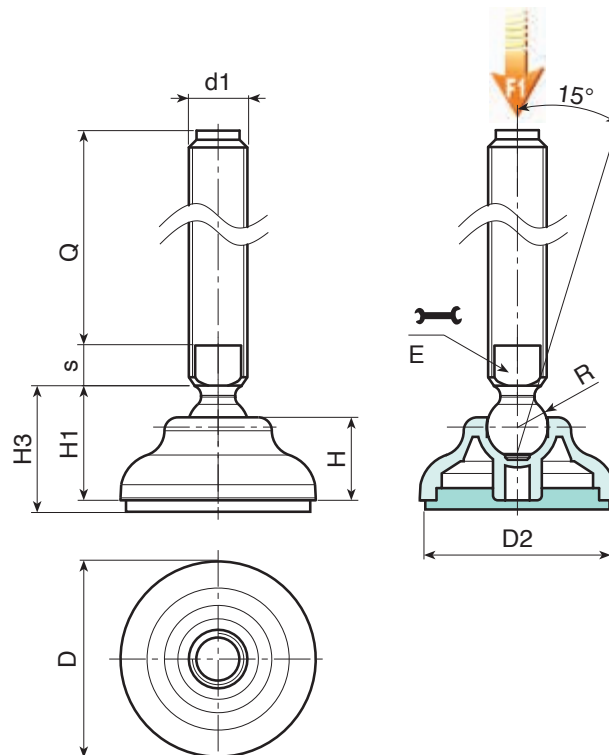
Galvanised steel threaded and articulated stem (ball R.15) with milled seat for wrench (type B) (thread tolerance 6g).

### Non-slip base:

Non-slip base in thermoplastic rubber SBS 75 Shore, black RAL 9011. Resistant to oils and greases. Push-fit assembly.

### Special requests:

- Upon request and for special quantities inserts can be supplied with customised lengths.
- Upon request and for special quantities the foot can be supplied in Orange (RAL 2004).



### Version P910: Mounting foot with stem type B (with milled seat for wrench) and ball R15 - with SBS non-slip base

Art.	D	H	H1	E	s	R	d1 <sub>6g</sub>	Q	g	F1 (kN)
P91060.TM20X..01	60	20	26	16	7	15	M20	50-70-90-110-130-150-170-190-210	158-198-238-280-320-360-400-440-480	13

Enter the selected stud length in place of the two dots . . in the item code. Customised stud length available for a minimum of 100 pieces. Attention: The expressed load limit F1 is lower than the break load by 30% and is intended as static.



# P902



## MOUNTING FOOT WITH GROUND FIXING AND STEEL ARTICULATED STEM TYPE A - BALL R15

### Materials:

Reinforced polyamide. Resistant to oils and greases.

### Surface finish:

Satin.

### Colour:

Black (RAL 9011).

### Inserts:

#### P902:

Galvanised steel threaded and articulated stem (ball R.15) with hexagonal base (thread tolerance 6g).

#### P902CIN

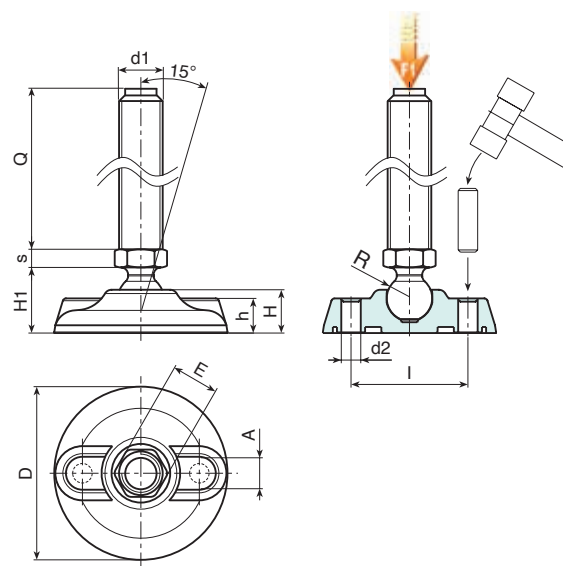
Stainless steel threaded and articulated stem (ball R.15) with hexagonal base (Aisi 303) (thread tolerance 6g).

### Ground fixing:

The mounting foot is supplied with closed holes for anchoring to the ground. To open them pierce the plastic membrane (see drawing).

### Special requests:

- Upon request and for special quantities inserts can be supplied with customised lengths.
- Upon request and for special quantities the foot can be supplied in Orange (RAL 2004).



### Version P902: Mounting foot with stem type A (with hexagonal base) and ball R15

Art.	D	H	I	H1	h	A	E	s	d2	R	d1 <sub>6g</sub>	Q	g	F1 (kN)
P902080.TM12X..01	80	20	54	25.5	16	20	16	6.5	9	15	M12	50-70-90-110	117-130-143-156	13
P902080.TM14X..01	80	20	54	25.5	16	20	16	6.5	9	15	M14	50-70-90-110-150	126-145-163-181-217	13
P902080.TM16X..01	80	20	54	25.5	16	20	16	6.5	9	15	M16	50-70-90-110-130-150-170-190	139-166-193-220-247-274-301-328	13
P902105.TM12X..01	105	22	74	28	18.5	21	16	6.5	11	15	M12	50-70-90-110	167-180-193-206	15
P902105.TM14X..01	105	22	74	28	18.5	21	16	6.5	11	15	M14	50-70-90-110-150	176-195-213-231-268	15
P902105.TM16X..01	105	22	74	28	18.5	21	16	6.5	11	15	M16	50-70-90-110-130-150-170-190	189-216-243-270-297-324-351-378	15
P902130.TM12X..01	130	24	99	30	20	21	16	6.5	13	15	M12	50-70-90-110	234-247-260-273	17
P902130.TM14X..01	130	24	99	30	20	21	16	6.5	13	15	M14	50-70-90-110-150	244-263-281-299-335	17
P902130.TM16X..01	130	24	99	30	20	21	16	6.5	13	15	M16	50-70-90-110-130-150-170-190	256-283-310-337-364-391-418-445	17

### Version P902CIN: Mounting foot with stem type A - stainless steel - (with hexagonal base) and ball R15



Art.	D	H	I	H1	h	A	E	s	d2	R	d1 <sub>6g</sub>	Q	g	F1 (kN)
P902080.TM12X..01CIN	80	20	54	25.5	16	20	16	6.5	9	15	M12	70-90-110	130-143-156	13
P902080.TM14X..01CIN	80	20	54	25.5	16	20	16	6.5	9	15	M14	70-110-130	145-163-181	13
P902080.TM16X..01CIN	80	20	54	25.5	16	20	16	6.5	9	15	M16	50-70-90-110-130-150-170-190	139-166-193-220-247-274-301-328	13
P902105.TM12X..01CIN	105	22	74	28	18.5	21	16	6.5	11	15	M12	70-90-110	180-193-206	15
P902105.TM14X..01CIN	105	22	74	28	18.5	21	16	6.5	11	15	M14	70-110-130	195-231-249	15
P902105.TM16X..01CIN	105	22	74	28	18.5	21	16	6.5	11	15	M16	50-70-90-110-130-150-170-190	189-216-243-270-297-324-351-378	15
P902130.TM12X..01CIN	130	24	99	30	20	21	16	6.5	13	15	M12	70-90-110	247-260-273	17
P902130.TM14X..01CIN	130	24	99	30	20	21	16	6.5	13	15	M14	70-110-130	263-299-317	17
P902130.TM16X..01CIN	130	24	99	30	20	21	16	6.5	13	15	M16	50-70-90-110-130-150-170-190	256-283-310-337-364-391-418-445	17

Enter the selected stud length in place of the two dots . . in the item code. Customised stud length available for a minimum of 100 pieces.

Attention: The expressed load limit F1 is lower than the break load by 30% and is intended as static.



Stock availability as % (🛒)  
90% (●) - 40% (●) - 5% (●)

# P911



## MOUNTING FOOT WITH GROUND FIXING AND STEEL ARTICULATED STEM TYPE A - BALL R12.4

### Materials:

Reinforced polyamide. Resistant to oils and greases.

### Surface finish:

Satin.

### Colour:

Black (RAL 9011).

### Inserts:

**P911:**  
Galvanised steel threaded and articulated stem (ball R.12.4) with hexagonal base (thread tolerance 6g).

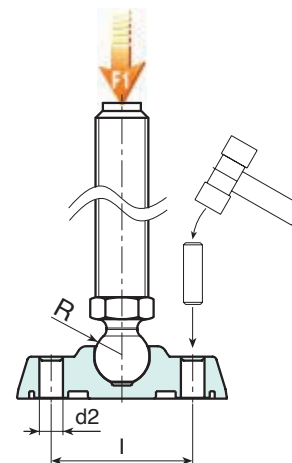
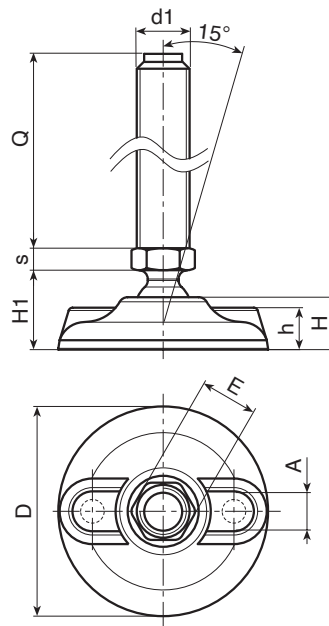
**P911CIN:**  
Stainless steel threaded and articulated stem (ball R.12.4) with hexagonal base (Aisi 303) (thread tolerance 6g).

### Ground fixing:

The mounting foot is supplied with closed holes for anchoring to the ground. To open them pierce the plastic membrane (see drawing).

### Special requests:

- Upon request and for special quantities inserts can be supplied with customised lengths.
- Upon request and for special quantities the foot can be supplied in Orange (RAL 2004).



### Version P911: Mounting foot with stem type A (with hexagonal base) and ball R12.4

Art.	D	H	I	H1	h	A	E	s	d2	R	d1 <sub>6g</sub>	Q	g	F1 (kN)
P911080.TM08X..01	80	20	54	25.5	16	20	13	5	9	12.5	M8	45-70	66-73	10
P911080.TM10X..01	80	20	54	25.5	16	20	13	5	9	12.5	M10	45-70-100	74-86-123	10
P911080.TM12X..01	80	20	54	25.5	16	20	13	5	9	12.5	M12	45-70-100	84-101-145	10

INOX

### Version P911CIN: Mounting foot with stem type A (with hexagonal base) and ball R12.4 - stainless steel

Art.	D	H	I	H1	h	A	E	s	d2	R	d1 <sub>6g</sub>	Q	g	F1 (kN)
P911080.TM08X..01CIN	80	20	54	25.5	16	20	13	5	9	12.5	M8	45-70	66-73	10
P911080.TM10X..01CIN	80	20	54	25.5	16	20	13	5	9	12.5	M10	45-70	74-86	10
P911080.TM12X..01CIN	80	20	54	25.5	16	20	13	5	9	12.5	M12	45-70-100	84-101-145	10

Enter the selected stud length in place of the two dots . . in the item code. Customised stud length available for a minimum of 100 pieces.

Attention: The expressed load limit F1 is lower than the break load by 30% and is intended as static.



Stock availability as % (🛒)  
90% (●) - 40% (●) - 5% (●)

# P912



## MOUNTING FOOT WITH GROUND FIXING AND STEEL ARTICULATED STEM TYPE B - BALL R12.4

### Materials:

Reinforced polyamide. Resistant to oils and greases.

### Surface finish:

Satin.

### Colour:

Black (RAL 9011).

### Inserts:

#### P912:

Galvanised steel threaded and articulated stem (ball R.12.4) with milled seat for wrench (type B) (thread tolerance 6g).

#### P912CIN:

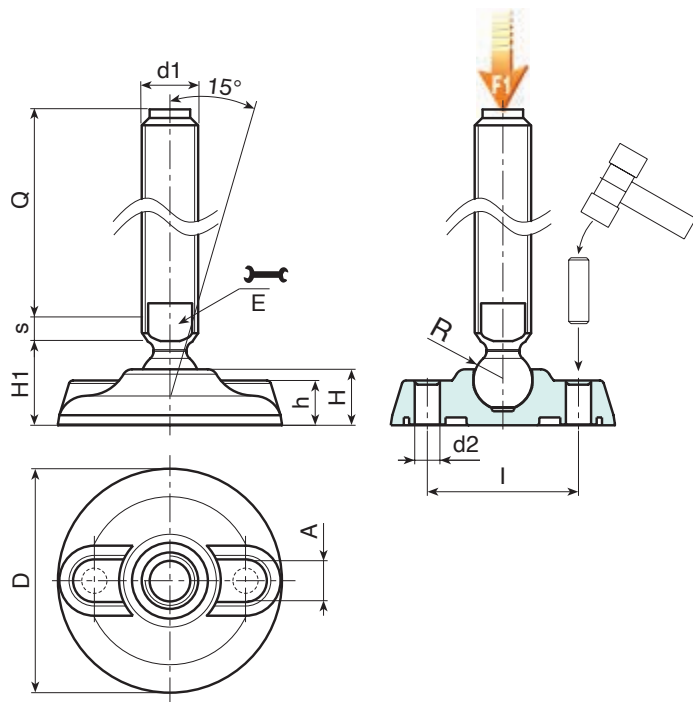
Stainless steel threaded and articulated stem (ball R.12.4) with milled seat for wrench (type B) (Aisi 303) (thread tolerance 6g).

### Ground fixing:

The mounting foot is supplied with closed holes for anchoring to the ground. To open them pierce the plastic membrane (see drawing).

### Special requests:

- Upon request and for special quantities inserts can be supplied with customised lengths.
- Upon request and for special quantities the foot can be supplied in Orange (RAL 2004).



### Version P912: Mounting foot with stem type B (with milled seat for wrench) and ball R12.4

Art.	D	H	I	H1	h	A	E	s	d2	R	d1 <sub>6g</sub>	Q		F1 (kN)
P912080.TM16X..01	80	20	54	25.5	16	20	13	7	9	12.5	M16	70-90-110-130-150-170	146-172-198-224-250-276	10

### Version P912CIN: Mounting foot with stem type B - stainless steel - (with milled seat for wrench) and ball R12.4

Art.	D	H	I	H1	h	A	E	s	d2	R	d1 <sub>6g</sub>	Q		F1 (kN)
P912080.TM16X..01CIN	80	20	54	25.5	16	20	13	7	9	12.5	M16	110-130-150-170	198-224-250-276	10



Enter the selected stud length in place of the two dots . . in the item code. Customised stud length available for a minimum of 100 pieces. Attention: The expressed load limit F1 is lower than the break load by 30% and is intended as static.



# P913



## MOUNTING FOOT WITH GROUND FIXING AND STEEL ARTICULATED STEM TYPE B - BALL R15

### Materials:

Reinforced polyamide. Resistant to oils and greases.

### Surface finish:

Satin.

### Colour:

Black (RAL 9011).

### Inserts:

**P913:**  
Galvanised steel threaded and articulated stem (ball R.15) with milled seat for wrench (type B) (thread tolerance 6g).

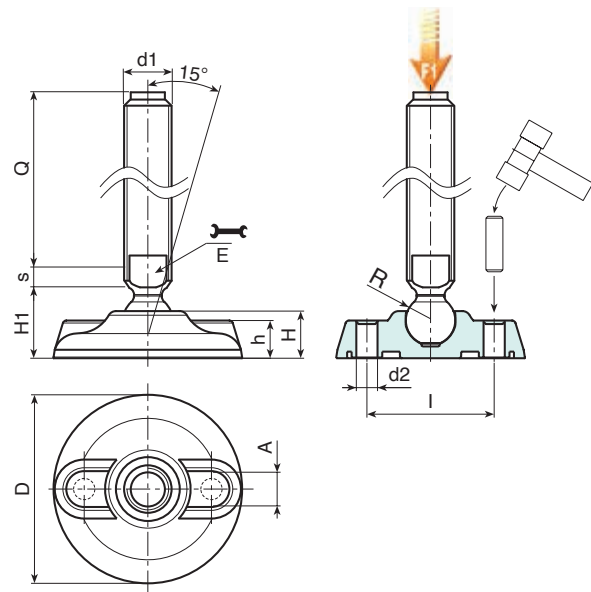
**P913CIN:**  
Stainless steel threaded and articulated stem (ball R.15) with milled seat for wrench (type B) (Aisi 304) (thread tolerance 6g).

### Ground fixing:

The mounting foot is supplied with closed holes for anchoring to the ground. To open them pierce the plastic membrane (see drawing).

### Special requests:

- Upon request and for special quantities inserts can be supplied with customised lengths.
- Upon request and for special quantities the foot can be supplied in Orange (RAL 2004).



### Version P913: Mounting foot with stem type B (with milled seat for wrench) and ball R15

Art.	D	H	I	H1	h	A	E	s	d2	R	d1 <sub>6g</sub>	Q	g	F1 (kN)
P913080.TM20X..01	80	20	54	25.5	16	20	16	7	9	15	M20	50-70-90-110-130-150-170-190-210	166-206-246-287-327-367-407-447-487	17
P913105.TM20X..01	105	22	74	28	18.5	21	16	7	11	15	M20	50-70-90-110-130-150-170-190-210	216-256-296-337-377-417-457-500-540	17
P913130.TM20X..01	130	24	99	30	20	21	16	7	13	15	M20	50-70-90-110-130-150-170-190-210	284-324-364-404-445-485-525-565-605	17
P913080.TM24X..01	80	20	54	25.5	16	20	19	7	9	15	M24	150-170-190-210	504-564-624-684	17
P913105.TM24X..01	105	22	74	28	18.5	21	19	7	11	15	M24	150-170-190-210	553-613-673-735	17
P913130.TM24X..01	130	24	99	30	20	21	19	7	13	15	M24	150-170-190-210	618-678-738-796	17

### Version P913CIN: Mounting foot with stem type B - stainless steel - (with milled seat for wrench) and ball R15



Art.	D	H	I	H1	h	A	E	s	d2	R	d1 <sub>6g</sub>	Q	g	F1 (kN)
P913080.TM20X..01CIN	80	20	54	25.5	16	20	16	7	9	15	M20	70-90-130-150-190-210	206-246-327-367-447-487	17
P913105.TM20X..01CIN	105	22	74	28	18.5	21	16	7	11	15	M20	70-90-130-150-190-210	256-296-377-417-500-540	17
P913130.TM20X..01CIN	130	24	99	30	20	21	16	7	13	15	M20	70-90-130-150-190-210	324-364-445-485-565-605	17
P913080.TM24X..01CIN	80	20	54	25.5	16	20	19	7	9	15	M24	110-150-190	384-504-624	17
P913105.TM24X..01CIN	105	22	74	28	18.5	21	19	7	11	15	M24	110-150-190	433-553-673	17
P913130.TM24X..01CIN	130	24	99	30	20	21	19	7	13	15	M24	110-150-190	498-618-738	17

Enter the selected stud length in place of the two dots . . in the item code. Customised stud length available for a minimum of 100 pieces.

Attention: The expressed load limit F1 is lower than the break load by 30% and is intended as static.



Stock availability as % (🛒)  
90% (●) - 40% (●) - 5% (●)

# P914



## MOUNTING FOOT WITH GROUND FIXING AND STEEL ARTICULATED STEM TYPE B - BALL R24

### Materials:

Reinforced polyamide. Resistant to oils and greases.

### Surface finish:

Satin.

### Colour:

Black (RAL 9011).

### Inserts:

#### P914:

Galvanised steel threaded and articulated stem (ball R.24) with milled seat for wrench (type B) (thread tolerance 6g).

#### P914CIN:

Stainless steel threaded and articulated stem (ball R.24) with milled seat for wrench (type B) (thread tolerance 6g).

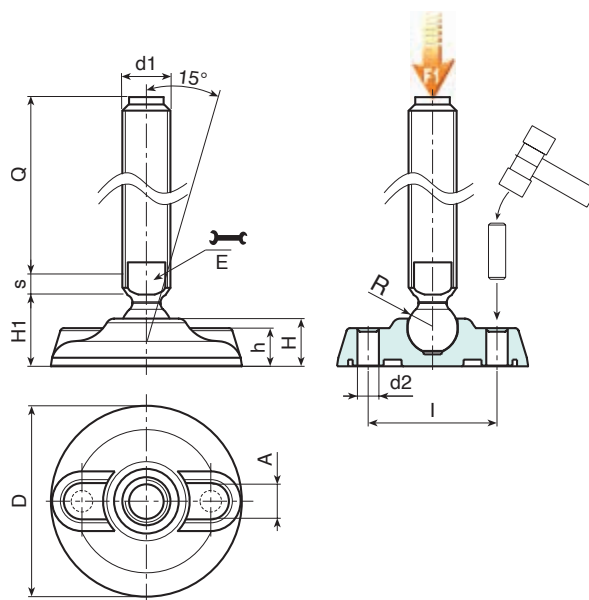
Stainless steel threaded and articulated stem (ball R.24) with milled seat for wrench (type B) (thread tolerance 6g). M24: Aisi 303; M30: Aisi 304

### Ground fixing:

The mounting foot is supplied with closed holes for anchoring to the ground. To open them pierce the plastic membrane (see drawing).

### Special requests:

- Upon request and for special quantities inserts can be supplied with customised lengths.
- Upon request and for special quantities the foot can be supplied in Orange (RAL 2004).



### Version P914: Mounting foot with stem type B (with milled seat for wrench) and ball R24

Art.	D	H	I	H1	h	A	E	s	d2	R	d1 <sub>6g</sub>	Q		F1 (kN)
P914080.TM24X..01	80	20	54	25.5	16	20	19	10	9	24	M24	110-130-150-170	384-444-504-564	25
P914080.TM30X..01	80	20	54	25.5	16	20	27	12	9	24	M30	110-130-150-170-190-210	627-722-817-912-1007-1100	25
P914105.TM24X..01	105	22	74	28	18.5	21	19	10	11	24	M24	110-130-150-170	433-493-553-613	25
P914105.TM30X..01	105	22	74	28	18.5	21	27	12	11	24	M30	110-130-150-170-190-210	676*771*866*960*1055*1150	25
P914130.TM24X..01	130	24	99	30	20	21	19	10	13	24	M24	110-130-150-170	498-558-618-678	25
P914130.TM30X..01	130	24	99	30	20	21	27	12	13	24	M30	110-130-150-170-190-210	741-836-931-1025-1120-1220	25

### Version P914CIN: Mounting foot with stem type B - stainless steel - (with milled seat for wrench) and ball R24



Art.	D	H	I	H1	h	A	E	s	d2	R	d1 <sub>6g</sub>	Q		F1 (kN)
P914080.TM24X..01CIN	80	20	54	25.5	16	20	19	10	9	24	M24	110-130-150-190	384-444-504-624	25
P914080.TM30X..01CIN	80	20	54	25.5	16	20	27	12	9	24	M30	130-170-210	722-912-1100	25
P914105.TM24X..01CIN	105	22	74	28	18.5	21	19	10	11	24	M24	110-130-150-190	433-493-553-673	25
P914105.TM30X..01CIN	105	22	74	28	18.5	21	27	12	11	24	M30	130-170-210	771-960-1150	25
P914130.TM24X..01CIN	130	24	99	30	20	21	19	13	13	24	M24	110-130-150-190	498-558-618-738	25
P914130.TM30X..01CIN	130	24	99	30	20	21	27	13	13	24	M30	130-170-210	836-1025-1220	25

Enter the selected stud length in place of the two dots . . in the item code. Customised stud length available for a minimum of 100 pieces.

Attention: The expressed load limit F1 is lower than the break load by 30% and is intended as static.



# P903



## MOUNTING FOOT WITH GROUND FIXING AND STEEL ARTICULATED STEM TYPE A - BALL R15 AND NON-SLIP BASE

### Materials:

Reinforced polyamide. Resistant to oils and greases.

### Surface finish:

Satin.

### Colour:

Black (RAL 9011).

### Inserts:

#### P903:

Galvanised steel threaded and articulated stem (ball R.15) with hexagonal base (thread tolerance 6g).

#### P903CIN:

Stainless steel threaded and articulated stem (ball R.15) with hexagonal base (Aisi 303) (thread tolerance 6g).

### Non-slip base:

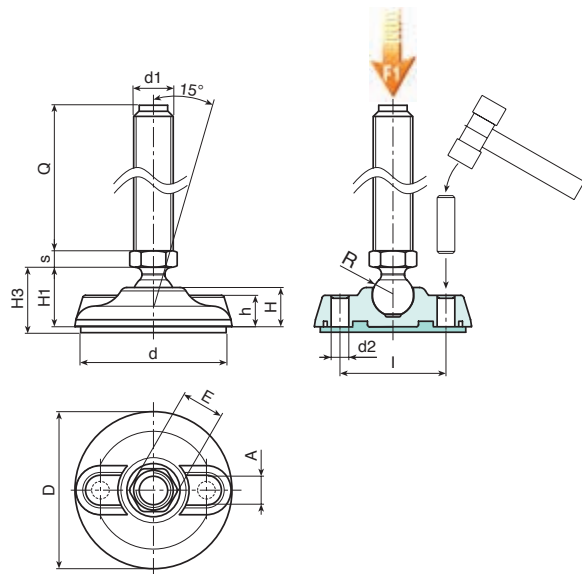
Non-slip base in thermoplastic rubber SBS 75 Shore, black RAL 9011. Resistant to oils and greases. Push-fit assembly.

### Ground fixing:

The mounting foot is supplied with closed holes for anchoring to the ground. To open them pierce the plastic membrane (see drawing).

### Special requests:

- Upon request and for special quantities inserts can be supplied with customised lengths.
- Upon request and for special quantities the foot can be supplied in Orange (RAL 2004).



### Version P903: Mounting foot with stem type A (with hexagonal base) and ball R15 - with SBS non-slip base

Art.	D	H	I	H1	H3	h	A	E	s	d2	d	R	d1 <sub>6g</sub>	Q	g	F1-kN
P903080.TM12X..01	80	20	54	25.5	28.5	16	20	16	6.5	9	75	15	M12	50-70-90-110	142-155-168-181	13
P903080.TM14X..01	80	20	54	25.5	28.5	16	20	16	6.5	9	75	15	M14	50-70-90-110-150	151-170-188-206-242	13
P903080.TM16X..01	80	20	54	25.5	28.5	16	20	16	6.5	9	75	15	M16	50-70-90-110-130-150-170-190	164-191-218-245-272-299-326-353	13
P903105.TM12X..01	105	22	74	28	32	18.5	21	16	6.5	11	101	15	M12	50-70-90-110	236-249-262-275	15
P903105.TM14X..01	105	22	74	28	32	18.5	21	16	6.5	11	101	15	M14	50-70-90-110-150	245-264-282-300-337	15
P903105.TM16X..01	105	22	74	28	32	18.5	21	16	6.5	11	101	15	M16	50-70-90-110-130-150-170-190	258-285-312-339-366-393-420-447	15
P903130.TM12X..01	130	24	99	30	35	20	21	16	6.5	13	126	15	M12	50-70-90-110	346-359-372-385	17
P903130.TM14X..01	130	24	99	30	35	20	21	16	6.5	13	126	15	M14	50-70-90-110-150	356-375-393-411-447	17
P903130.TM16X..01	130	24	99	30	35	20	21	16	6.5	13	126	15	M16	50-70-90-110-130-150-170-190	368-395-422-450-477-504-531-558	17

### Version P903CIN: Mounting foot with stem type A - stainless steel - (with hexagonal base) and ball R15 - with SBS non-slip base



Art.	D	H	I	H1	H3	h	A	E	s	d2	d	R	d1 <sub>6g</sub>	Q	g	F1-kN
P903080.TM12X..01CIN	80	20	54	25.5	28.5	16	20	16	6.5	9	75	15	M12	70-90-110	155-168-181	13
P903080.TM14X..01CIN	80	20	54	25.5	28.5	16	20	16	6.5	9	75	15	M14	70-110-130	170-206-224	13
P903080.TM16X..01CIN	80	20	54	25.5	28.5	16	20	16	6.5	9	75	15	M16	50-70-90-110-130-150-170-190	164-191-218-245-272-299-326-353	13
P903105.TM12X..01CIN	105	22	74	28	32	18.5	21	16	6.5	11	101	15	M12	70-90-110	249-262-275	15
P903105.TM14X..01CIN	105	22	74	28	32	18.5	21	16	6.5	11	101	15	M14	70-110-130	264-300-318	15
P903105.TM16X..01CIN	105	22	74	28	32	18.5	21	16	6.5	11	101	15	M16	50-70-90-110-130-150-170-190	258-285-312-339-366-393-420-447	15
P903130.TM12X..01CIN	130	24	99	30	35	20	21	16	6.5	13	126	15	M12	70-90-110	359-372-385	17
P903130.TM14X..01CIN	130	24	99	30	35	20	21	16	6.5	13	126	15	M14	70-110-130	375-411-429	17
P903130.TM16X..01CIN	130	24	99	30	35	20	21	16	6.5	13	126	15	M16	50-70-90-110-130-150-170-190	368-395-422-450-477-504-531-558	17

Enter the selected stud length in place of the two dots . . in the item code. Customised stud length available for a minimum of 100 pieces.

Attention: The expressed load limit F1 is lower than the break load by 30% and is intended as static.



Stock availability as % (🛒)  
90% (●) - 40% (●) - 5% (●)



# P915



## MOUNTING FOOT WITH GROUND FIXING AND STEEL ARTICULATED STEM TYPE A - BALL R12.4 AND NON-SLIP BASE

### Materials:

Reinforced polyamide. Resistant to oils and greases.

### Surface finish:

Satin.

### Colour:

Black (RAL 9011).

### Inserts:

#### P915:

Galvanised steel threaded and articulated stem (ball R.12.4) with hexagonal base (thread tolerance 6g).

#### P915CIN:

Stainless steel threaded and articulated stem (ball R.12.4) with hexagonal base (Aisi 303) (thread tolerance 6g).

### Non-slip base:

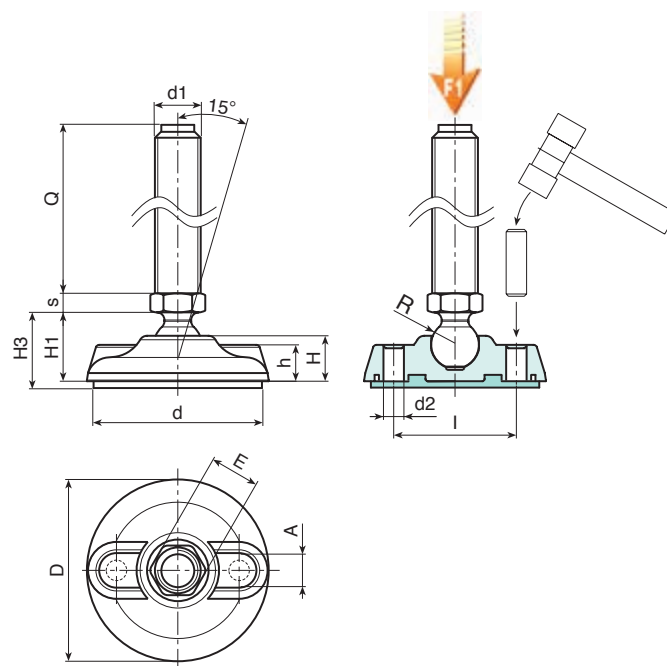
Non-slip base in thermoplastic rubber SBS 75 Shore, black RAL 9011. Resistant to oils and greases. Push-fit assembly.

### Ground fixing:

The mounting foot is supplied with closed holes for anchoring to the ground. To open them pierce the plastic membrane (see drawing).

### Special requests:

- Upon request and for special quantities inserts can be supplied with customised lengths.
- Upon request and for special quantities the foot can be supplied in Orange (RAL 2004).



### Version P915: Mounting foot with stem type A (with hexagonal base) and ball R12.4 - with SBS non-slip base

Art.	D	H	I	H1	H3	h	A	E	s	d2	d	R	d1 <sub>6g</sub>	Q	g	F1 (kN)
P915080.TM08X..01	80	20	54	25.5	28.5	16	20	13	5	9	75	12.5	M8	45-70	91-97	10
P915080.TM10X..01	80	20	54	25.5	28.5	16	20	13	5	9	75	12.5	M10	45-70-100	97-109-146	10
P915080.TM12X..01	80	20	54	25.5	28.5	16	20	13	5	9	75	12.5	M12	45-70-100	107-124-168	10

### Version P915CIN: Mounting foot with stem type A - stainless steel - (with hexagonal base) and ball R12.4 - with SBS non-slip base



Art.	D	H	I	H1	H3	h	A	E	s	d2	d	R	d1 <sub>6g</sub>	Q	g	F1 (kN)
P915080.TM08X..01	80	20	54	25.5	28.5	16	20	13	5	9	75	12.5	M8	45-70	91-97	10
P915080.TM10X..01	80	20	54	25.5	28.5	16	20	13	5	9	75	12.5	M10	45-70-100	97-109-146	10
P915080.TM12X..01	80	20	54	25.5	28.5	16	20	13	5	9	75	12.5	M12	45-70-100	107-124-168	10

Enter the selected stud length in place of the two dots . . in the item code. Customised stud length available for a minimum of 100 pieces.

Attention: The expressed load limit F1 is lower than the break load by 30% and is intended as static.



# P916



## MOUNTING FOOT WITH GROUND FIXING AND STEEL ARTICULATED STEM TYPE B - BALL R12.4 AND NON-SLIP BASE

### Materials:

Reinforced polyamide. Resistant to oils and greases.

### Surface finish:

Satin.

### Colour:

Black (RAL 9011).

### Inserts:

#### P916:

Galvanised steel threaded and articulated stem (ball R.12.4) with milled seat for wrench (type B) (thread tolerance 6g).

#### P916CIN:

Stainless steel threaded and articulated stem (ball R.12.4) with milled seat for wrench (type B) (Aisi 303) (thread tolerance 6g).

### Non-slip base:

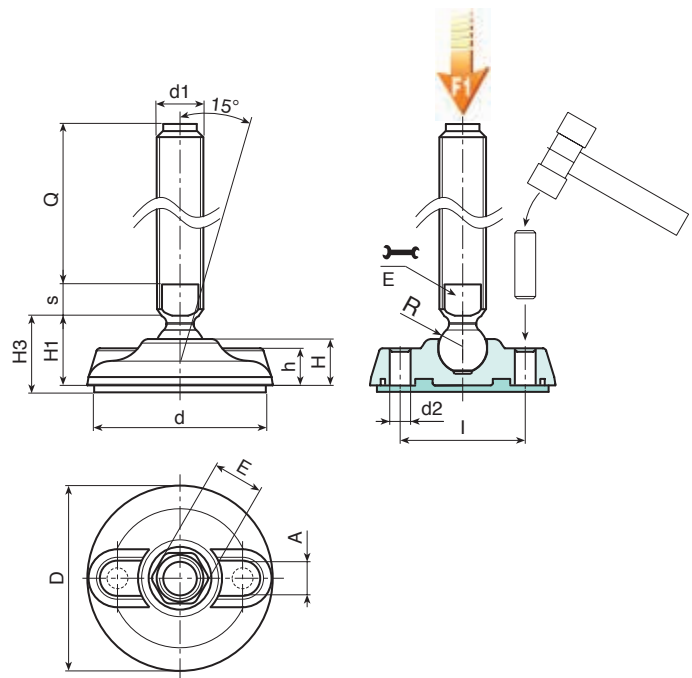
Non-slip base in thermoplastic rubber SBS 75 Shore, black RAL 9011. Resistant to oils and greases. Push-fit assembly.

### Ground fixing:

The mounting foot is supplied with closed holes for anchoring to the ground. To open them pierce the plastic membrane (see drawing).

### Special requests:

- Upon request and for special quantities inserts can be supplied with customised lengths.
- Upon request and for special quantities the foot can be supplied in Orange (RAL 2004).



### Version P916: Mounting foot with stem type B (with milled seat for wrench) and ball R12.4 - with SBS non-slip base

Art.	D	H	I	H1	H3	h	A	E	s	d2	d	R	d1 <sub>6g</sub>	Q		F1-kN
P916080.TM16X..01	80	20	54	25.5	28.5	16	20	13	7	9	75	12.5	M16	70-90-110-130-150-170	171-194-217-240-263-286	10

### Version P916CIN: Mounting foot with stem type B - stainless steel - (with milled seat for wrench) and ball R12.4 - with SBS non-slip base

INOX

Art.	D	H	I	H1	H3	h	A	E	s	d2	d	R	d1 <sub>6g</sub>	Q		F1-kN
P916080.TM16X..01CIN	80	20	54	25.5	28.5	16	20	13	7	9	75	12.5	M16	110-130-150-170	217-240-263-286	10

Enter the selected stud length in place of the two dots . . in the item code. Customised stud length available for a minimum of 100 pieces.

Attention: The expressed load limit F1 is lower than the break load by 30% and is intended as static.



Stock availability as % ()  
90% (●) - 40% (●) - 5% (●)

# P917



## MOUNTING FOOT WITH GROUND FIXING AND STEEL ARTICULATED STEM TYPE B - BALL R15 AND NON-SLIP BASE

### Materials:

Reinforced polyamide. Resistant to oils and greases.

### Surface finish:

Satin.

### Colour:

Black (RAL 9011).

### Inserts:

#### P917:

Galvanised steel threaded and articulated stem (ball R.15) with milled seat for wrench (type B) (thread tolerance 6g).

#### P917CIN:

Stainless steel threaded and articulated stem (ball R.15) with milled seat for wrench (type B) (Aisi 303) (thread tolerance 6g).

### Non-slip base:

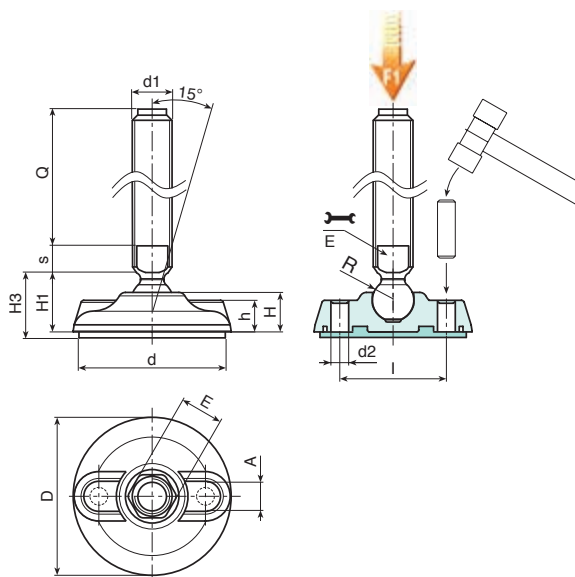
Non-slip base in thermoplastic rubber SBS 75 Shore, black RAL 9011. Resistant to oils and greases. Push-fit assembly.

### Ground fixing:

The mounting foot is supplied with closed holes for anchoring to the ground. To open them pierce the plastic membrane (see drawing).

### Special requests:

- Upon request and for special quantities inserts can be supplied with customised lengths.
- Upon request and for special quantities the foot can be supplied in Orange (RAL 2004).



### Version P917: Mounting foot with stem type B (with milled seat for wrench) and ball R15 - with SBS non-slip base

Art.	D	H	I	H1	H3	h	A	E	s	d2	d	R	d1 <sub>6g</sub>	Q	g	F1-kN
P917080.TM20X..01	80	20	54	25.5	28.5	16	20	16	7	9	75	15	M20	50-70-90-110-130-150-170-190-210	191-231-271-311-351-391-431-470-510	17
P917105.TM20X..01	105	22	74	28	32	18.5	21	16	7	11	101	15	M20	50-70-90-110-130-150-170-190-210	285-325-365-405-445-485-525-565-605	17
P917130.TM20X..01	130	24	99	30	35	20	21	16	7	13	126	15	M20	50-70-90-110-130-150-170-190-210	396-436-476-516-556-596-636-675-715	17
P917080.TM24X..01	80	20	54	25.5	28.5	16	20	19	7	9	75	15	M24	150-170-190-210	589-650-710-770	17
P917105.TM24X..01	105	22	74	28	32	18.5	21	19	7	11	101	15	M24	150-170-190-210	682-742-800-860	17
P917130.TM24X..01	130	24	99	30	35	20	21	19	7	13	126	15	M24	150-170-190-210	790-850-910-970	17

### Version P917CIN: Mounting foot with stem type B - stainless steel - (with milled seat for wrench) and ball R15 - with SBS non-slip base

INOX

Art.	D	H	I	H1	H3	h	A	E	s	d2	d	R	d1 <sub>6g</sub>	Q	g	F1-kN
P917080.TM20X..01CIN	80	20	54	25.5	28.5	16	20	16	7	9	75	15	M20	70-90-130-150-190-210	231-271-351-391-470-510	17
P917105.TM20X..01CIN	105	22	74	28	32	18.5	21	16	7	11	101	15	M20	70-90-130-150-190-210	325-365-445-485-565-605	17
P917130.TM20X..01CIN	130	24	99	30	35	20	21	16	7	13	126	15	M20	70-90-130-150-190-210	436-476-556-596-675-715	17
P917080.TM24X..01CIN	80	20	54	25.5	28.5	16	20	19	7	9	75	15	M24	110-150-190-210	469-589-710-770	17
P917105.TM24X..01CIN	105	22	74	28	32	18.5	21	19	7	11	101	15	M24	110-150-190	562-682-800	17
P917130.TM24X..01CIN	130	24	99	30	35	20	21	19	7	13	126	15	M24	110-150-190	670-790-910	17

Enter the selected stud length in place of the two dots . . in the item code. Customised stud length available for a minimum of 100 pieces.

Attention: The expressed load limit F1 is lower than the break load by 30% and is intended as static.



# P918



## MOUNTING FOOT WITH GROUND FIXING AND STEEL ARTICULATED STEM TYPE B - BALL R24 AND NON-SLIP BASE

### Materials:

Reinforced polyamide. Resistant to oils and greases.

### Surface finish:

Satin.

### Colour:

Black (RAL 9011).

### Inserts:

#### P918:

Galvanised steel threaded and articulated stem (ball R.24) with milled seat for wrench (type B) (thread tolerance 6g).

#### P918CIN:

Stainless steel threaded and articulated stem (ball R.24) with milled seat for wrench (type B) (Aisi 303) (thread tolerance 6g).

### Non-slip base:

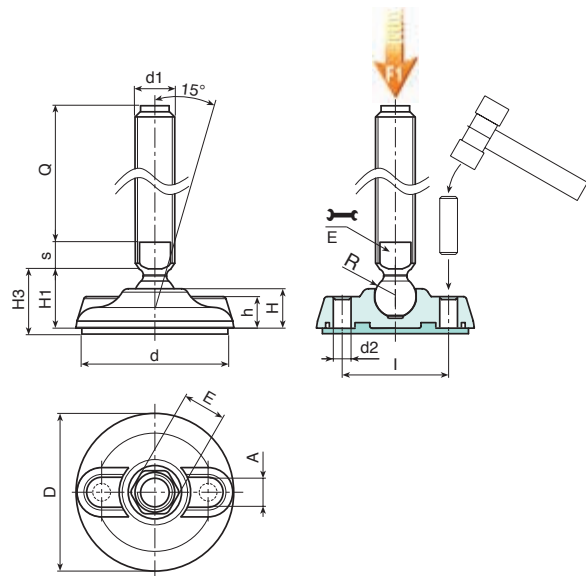
Non-slip base in thermoplastic rubber SBS 75 Shore, black RAL 9011. Resistant to oils and greases. Push-fit assembly.

### Ground fixing:

The mounting foot is supplied with closed holes for anchoring to the ground. To open them pierce the plastic membrane (see drawing).

### Special requests:

- Upon request and for special quantities inserts can be supplied with customised lengths.
- Upon request and for special quantities the foot can be supplied in Orange (RAL 2004).



### Version P918: Mounting foot with stem type B (with milled seat for wrench) and ball R24 - with SBS non-slip base

Art.	D	H	I	H1	H3	h	A	E	s	d2	d	R	d1 <sub>6g</sub>	Q	g	F1 (kN)
P918080.TM24X..01	80	20	54	25.5	28.5	16	20	19	10	9	75	24	M24	110-130-150-170	469-529-589-650	25
P918080.TM30X..01	80	20	54	25.5	28.5	16	20	27	12	9	75	24	M30	110-130-150-170-190-210	652-747-842-935-1030-1125	25
P918105.TM24X..01	105	22	74	28	32	18.5	21	19	10	11	101	24	M24	110-130-150-170	562-622-682-742	25
P918105.TM30X..01	105	22	74	28	32	18.5	21	27	12	11	101	24	M30	110-130-150-170-190-210	745-840-934-1030-1125-1220	25
P918130.TM24X..01	130	24	99	30	35	20	21	19	10	13	126	24	M24	110-130-150-170	670-730-790-850	25
P918130.TM30X..01	130	24	99	30	35	20	21	27	12	13	126	24	M30	110-130-150-170-190-210	853-948-1043-1140-1235-1330	25

### Version P918CIN: Foot with stem type B - stainless steel - (with milled seat for wrench) and ball R24 - with SBS non-slip base



Art.	D	H	I	H1	H3	h	A	E	s	d2	d	R	d1 <sub>6g</sub>	Q	g	F1 (kN)
P918080.TM24X..01CIN	80	20	54	25.5	28.5	16	20	19	10	9	75	24	M24	110-130-150-190	469-529-589-709	25
P918080.TM30X..01CIN	80	20	54	25.5	28.5	16	20	27	12	9	75	24	M30	130-170-210	747-935-1125	25
P918105.TM24X..01CIN	105	22	74	28	32	18.5	21	19	10	11	101	24	M24	110-130-150-190	562-622-682-802	25
P918105.TM30X..01CIN	105	22	74	28	32	18.5	21	27	12	11	101	24	M30	130-170-210	840-1030-1220	25
P918130.TM24X..01CIN	130	24	99	30	35	20	21	19	10	13	126	24	M24	110-130-150-190	670-730-790-910	25
P918130.TM30X..01CIN	130	24	99	30	35	20	21	27	12	13	126	24	M30	130-170-210	948-1140-1330	25

Enter the selected stud length in place of the two dots . . in the item code. Customised stud length available for a minimum of 100 pieces.

Attention: The expressed load limit F1 is lower than the break load by 30% and is intended as static.



Stock availability as % (🛒)  
90% (●) - 40% (●) - 5% (●)

# P700



## TEARDROP MOUNTING FOOT WITH GROUND FIXING AND STEEL ARTICULATED STEM TYPE A - BALL R12.4

### Materials:

Reinforced polyamide.  
Resistant to oils and greases.

### Surface finish:

Satin.

### Colour:

Black (RAL 9011).

### Inserts:

#### P700:

Galvanised steel threaded and articulated stem (ball R.12.4) with hexagonal base (thread tolerance 6g).

#### P700CIN:

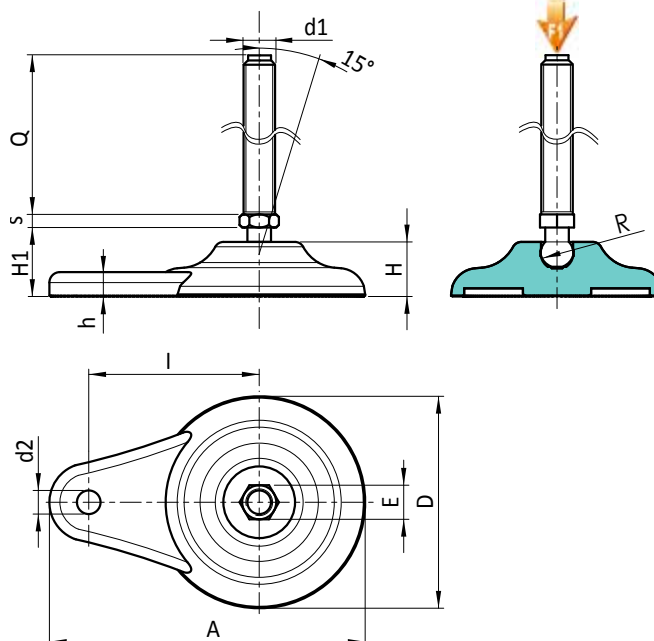
Stainless steel threaded and articulated stem (ball R.12.4) with hexagonal base (Aisi 303) (thread tolerance 6g).

### Ground fixing:

Through hole obtained by moulding the plastic.

### Special requests:

- Upon request and for special quantities inserts can be supplied with customised lengths.
- Upon request and for special quantities the foot can be supplied in Orange (RAL 2004).



### Version P700: Teardrop mounting foot with ground fixing - stem type A (with hexagonal base) and ball R12.5

Art.	D	H	I	H1	h	A	E	s	d2	R	d1	Q		F1 (kN)
P700080.TM08X..01	80	20	65	26	9	120	13	5	9	12.5	M8	45-70	58-65	10
P700080.TM10X..01	80	20	65	26	9	120	13	5	9	12.5	M10	45-70-100	83-95-132	10
P700080.TM12X..01	80	20	65	26	9	120	13	5	9	12.5	M12	45-70-100	93-110-154	10

### Version P700CIN: Teardrop mounting foot with ground fixing - stem type A - stainless steel - (with hexagonal base) and ball R12.5



Art.	D	H	I	H1	h	A	E	s	d2	R	d1	Q		F1 (kN)
P700080.TM08X..01CIN	80	20	65	26	9	120	13	5	9	12.5	M8	45-70	58-65	10
P700080.TM10X..01CIN	80	20	65	26	9	120	13	5	9	12.5	M10	45-70-100	83-95-132	10
P700080.TM12X..01CIN	80	20	65	26	9	120	13	5	9	12.5	M12	45-70-100	93-110-154	10

Enter the selected stud length in place of the two dots . . in the item code. Customised stud length available for a minimum of 100 pieces.  
Attention: The expressed load limit F1 is lower than the break load by 30% and is intended as static.



# P702



## TEARDROP MOUNTING FOOT WITH GROUND FIXING AND STEEL ARTICULATED STEM TYPE A - BALL R15

### Materials:

Reinforced polyamide.  
Resistant to oils and greases.

### Surface finish:

Satin.

### Colour:

Black (RAL 9011).

### Inserts:

#### P702:

Galvanised steel threaded and articulated stem (ball R.15) with hexagonal base (thread tolerance 6g).

#### P702CIN:

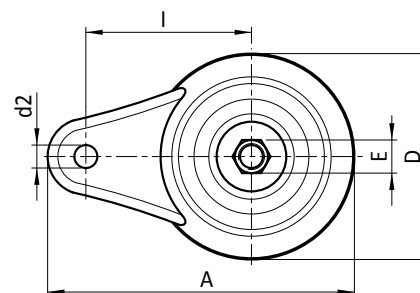
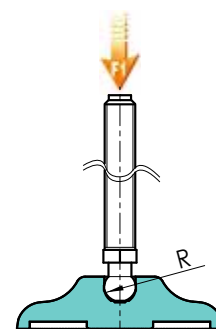
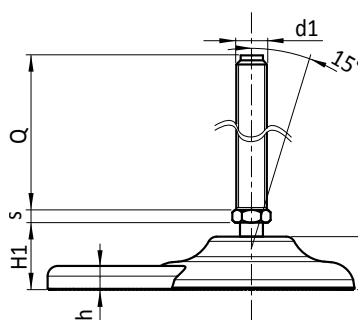
Stainless steel threaded and articulated stem (ball R.15) with hexagonal base (Aisi 303) (thread tolerance 6g).

### Ground fixing:

Through hole obtained by moulding the plastic.

### Special requests:

- Upon request and for special quantities inserts can be supplied with customised lengths.
- Upon request and for special quantities the foot can be supplied in Orange (RAL 2004).



### Version P702: Teardrop mounting foot with ground fixing - stem type A (with hexagonal base) and ball R15

Art.	D	H	I	H1	h	A	E	s	d2	R	d1 <sub>6g</sub>	Q	g	F1 (kN)
P702080.TM12X..01	80	20	65	26	9	120	16	6.5	9	15	M12	50-70-90-110	120-133-148-164	13
P702080.TM14X..01	80	20	65	26	9	120	16	6.5	9	15	M14	50-70-90-110-150	132-152-173-190-224	13
P702080.TM16X..01	80	20	65	26	9	120	16	6.5	9	15	M16	50-70-90-110-130-150-170-190	148-174-200-225-251-276-304-327	13

### Version P702CIN: Teardrop mounting foot with ground fixing - stem type A - stainless steel - (with hexagonal base) and ball R15

INOX

Art.	D	H	I	H1	h	A	E	s	d2	R	d1 <sub>6g</sub>	Q	g	F1 (kN)
P702080.TM12X..01CIN	80	20	65	26	9	120	16	6.5	9	15	M12	70-90-110	133-148-164	13
P702080.TM14X..01CIN	80	20	65	26	9	120	16	6.5	9	15	M14	70-110-130	152-190-207	13
P702080.TM16X..01CIN	80	20	65	26	9	120	16	6.5	9	15	M16	50-70-90-110-130-150-170-190	148-174-200-225-251-276-304-327	13

Enter the selected stud length in place of the two dots . . in the item code. Customised stud length available for a minimum of 100 pieces.  
Attention: The expressed load limit F1 is lower than the break load by 30% and is intended as static.



# P704



## TEARDROP MOUNTING FOOT WITH GROUND FIXING AND STEEL ARTICULATED STEM TYPE B - BALL R12.4

### Materials:

Reinforced polyamide.  
Resistant to oils and greases.

### Surface finish:

Satin.

### Colour:

Black (RAL 9011).

### Inserts:

#### P704:

Galvanised steel threaded and articulated stem (ball R.12.5) with milled seat for wrench (type B) (thread tolerance 6g).

#### P704CIN:

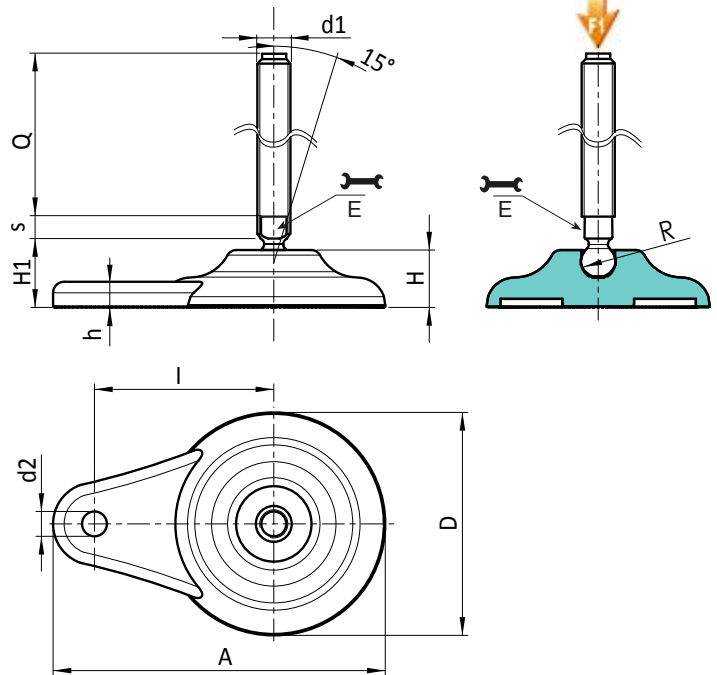
Stainless steel threaded and articulated stem (ball R.12.5) with milled seat for wrench (type B) (Aisi 303) (thread tolerance 6g).

### Ground fixing:

Through hole obtained by moulding the plastic.

### Special requests:

- Upon request and for special quantities inserts can be supplied with customised lengths.
- Upon request and for special quantities the foot can be supplied in Orange (RAL 2004).



### Version P704: Teardrop mounting foot with ground fixing - stem type B (with milled seat for wrench) and ball R12.5

Art.	D	H	I	H1	h	A	E	s	d2	R	d1 <sub>6g</sub>	Q	g	F1 (kN)
P704080.TM16X..01	80	20	65	26	9	120	13	7	9	12,4	M16	70-90-110-130-150-170	156-182-208-234-260-286	10

Enter the selected stud length in place of the two dots . . in the item code. Customised stud length available for a minimum of 100 pieces.

Attention: The expressed load limit F1 is lower than the break load by 30% and is intended as static.

### Version P702CIN: Teardrop mounting foot with ground fixing - stem type A - stainless steel - (with hexagonal base) and ball R15



Art.	D	H	I	H1	h	A	E	s	d2	R	d1 <sub>6g</sub>	Q	g	F1 (kN)
P704080.TM16X..01CIN	80	20	65	26	9	120	13	7	9	12,4	M16	110-130-150-170	130-156-182-208-234-260-286	10

Enter the selected stud length in place of the two dots . . in the item code. Customised stud length available for a minimum of 100 pieces.

Attention: The expressed load limit F1 is lower than the break load by 30% and is intended as static.

# P706



## TEARDROP MOUNTING FOOT WITH GROUND FIXING AND STEEL ARTICULATED STEM TYPE B - BALL R15

### Materials:

Reinforced polyamide.  
Resistant to oils and greases.

### Surface finish:

Satin.

### Colour:

Black (RAL 9011).

### Inserts:

#### P706:

Galvanised steel threaded and articulated stem (ball R.15) with milled seat for wrench (type B) (thread tolerance 6g).

#### P706CIN:

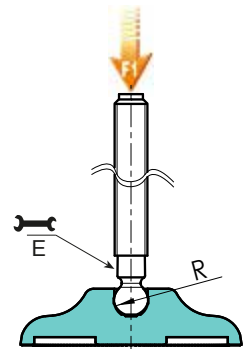
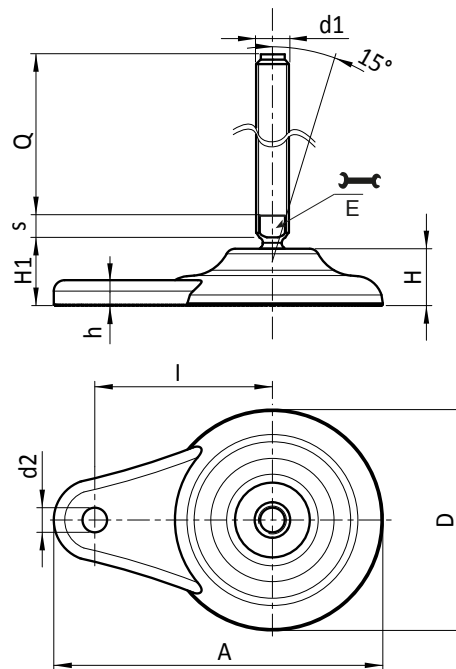
Stainless steel threaded and articulated stem (ball R.15) with milled seat for wrench (type B) (Aisi 304) (thread tolerance 6g).

### Ground fixing:

Through hole obtained by moulding the plastic.

### Special requests:

- Upon request and for special quantities inserts can be supplied with customised lengths.
- Upon request and for special quantities the foot can be supplied in Orange (RAL 2004).



### Version P706: Teardrop mounting foot with ground fixing - stem type B (with milled seat for wrench) and ball R15

Art.	D	H	I	H1	h	A	E	s	d2	R	d1 <sub>6g</sub>	Q		F1 (kN)
P706080.TM20X..01	80	20	65	26	9	120	16	7	9	15	M20	70-90-130-150-190-210	231-263-327-362-427-462	17
P706080.TM24X..01	80	20	65	26	9	120	16	7	9	15	M24	150-170-190-210	567-627-687-747	17

### Version P706CIN: Teardrop mounting foot with ground fixing - stem type B - stainless steel - (with milled seat for wrench) and ball R15

INOX

Art.	D	H	I	H1	h	A	E	s	d2	R	d1 <sub>6g</sub>	Q		F1 (kN)
P706080.TM20X..01	80	20	65	26	9	120	16	7	9	15	M20	70-90-130-150-190-210	231-263-327-362-427-462	17
P706080.TM24X..01	80	20	65	26	9	120	16	7	9	15	M24	150-170-190-210	567-627-687-747	17

Enter the selected stud length in place of the two dots . . in the item code. Customised stud length available for a minimum of 100 pieces.  
Attention: The expressed load limit F1 is lower than the break load by 30% and is intended as static.





# P708



## TEARDROP MOUNTING FOOT WITH GROUND FIXING AND STEEL ARTICULATED STEM TYPE B - BALL R24

### Materials:

Reinforced polyamide.  
Resistant to oils and greases.

### Surface finish:

Satin.

### Colour:

Black (RAL 9011).

### Inserts:

#### P708:

Galvanised steel threaded and articulated stem (ball R.24) with milled seat for wrench (type B) (thread tolerance 6g).

#### P708CIN:

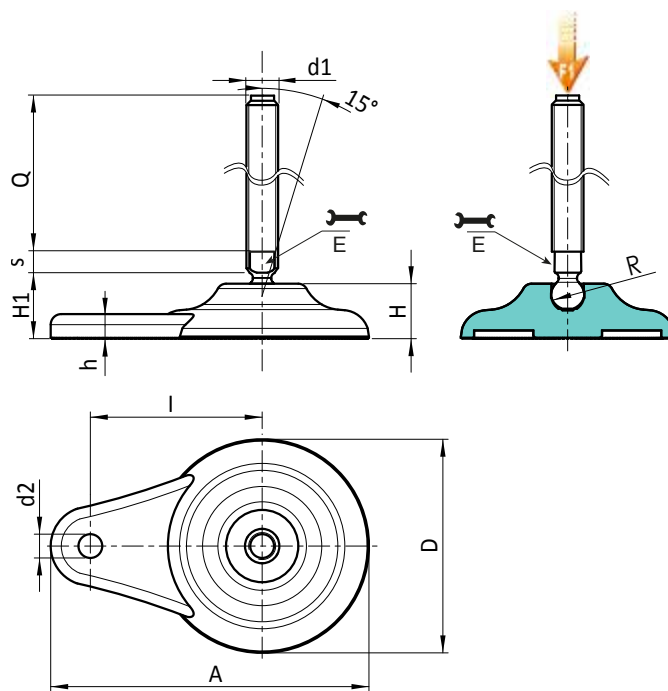
Stainless steel threaded and articulated stem (ball R.24) with milled seat for wrench (type B) (Aisi 304) (thread tolerance 6g).

### Ground fixing:

Through hole obtained by moulding the plastic.

### Special requests:

- Upon request and for special quantities inserts can be supplied with customised lengths.
- Upon request and for special quantities the foot can be supplied in Orange (RAL 2004).



### Version P708: Teardrop mounting foot with ground fixing - stem type B (with milled seat for wrench) and ball R24

Art.	D	H	I	H1	h	A	E	s	d2	R	d1 <sub>6g</sub>	Q		F1 (kN)
P708080.TM24X..01	80	20	65	32	9	120	19	10	9	24	M24	110-130-150-170	446-506-566-626	25
P708080.TM30X..01	80	20	65	32	9	120	27	12	9	24	M30	110-130-150-170-190-210	606-693-781-869-956-1046	25

### Version P708CIN: Teardrop mounting foot with ground fixing - stem type B - stainless steel - (with milled seat for wrench) and ball R24

**INOX**

Art.	D	H	I	H1	h	A	E	s	d2	R	d1 <sub>6g</sub>	Q		F1 (kN)
P708080.TM24X..01CIN	80	20	65	32	9	120	19	10	9	24	M24	110-130-150-190	446-506-566-686	25
P708080.TM30X..01CIN	80	20	65	32	9	120	27	12	9	24	M30	130-170-210	693-869-1046	25

Enter the selected stud length in place of the two dots . . in the item code. Customised stud length available for a minimum of 100 pieces.  
Attention: The expressed load limit F1 is lower than the break load by 30% and is intended as static.



# P701



## TEARDROP MOUNTING FOOT WITH GROUND FIXING AND STEEL ARTICULATED STEM TYPE A - BALL R12.4 AND NON-SLIP BASE

### Materials:

Reinforced polyamide.  
Resistant to oils and greases.

### Surface finish:

Satin.

### Colour:

Black (RAL 9011).

### Inserts:

#### P701:

Galvanised steel threaded and articulated stem (ball R.12.5) with hexagonal base (thread tolerance 6g).

#### P701CIN:

Stainless steel threaded and articulated stem (ball R.12.5) with hexagonal base (Aisi 303) (thread tolerance 6g).

### Non-slip base:

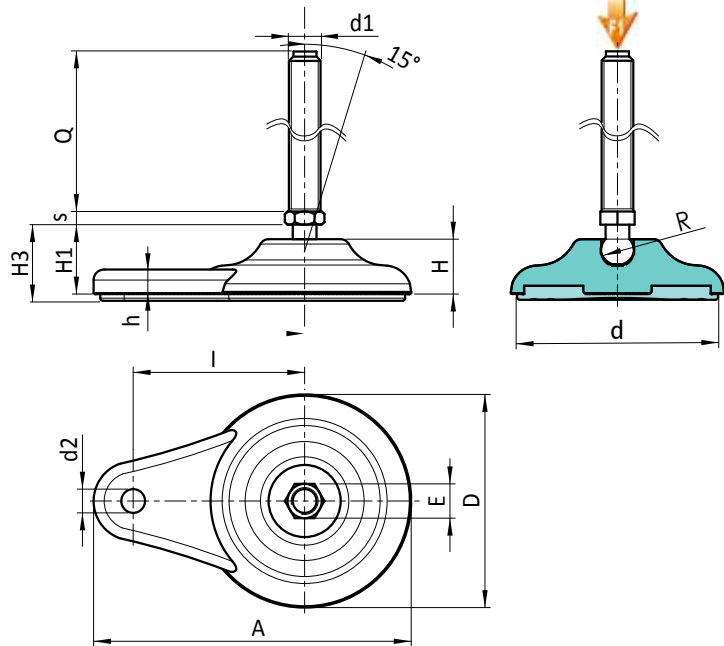
Non-slip base in thermoplastic rubber SBS 75 Shore, black RAL 9011. Resistant to oils and greases. Push-fit assembly.

### Ground fixing:

Through hole obtained by moulding the plastic.

### Special requests:

- Upon request and for special quantities inserts can be supplied with customised lengths.
- Upon request and for special quantities the foot can be supplied in Orange (RAL 2004).



### Version P701: Teardrop mounting foot with ground fixing - stem type A (with hexagonal base) and ball R12.5 - with SBS non-slip base

Art.	D	H	I	H1	H3	h	A	E	s	d2	d	R	d1 <sub>6g</sub>	Q	g	F1 (kN)
P701080.TM08X..01	80	20	65	26	29	9	120	13	5	9	70	12.5	M8	45-70	72-79	10
P701080.TM10X..01	80	20	65	26	29	9	120	13	5	9	70	12.5	M10	45-70-100	97-109-146	10
P701080.TM12X..01	80	20	65	26	29	9	120	13	5	9	70	12.5	M12	45-70-100	107-124-168	10

### Version P701CIN: Teardrop mounting foot with ground fixing - stem type A - stainless steel - (with hexagonal base) and ball R12.5 - with SBS non-slip base

**INOX**

Art.	D	H	I	H1	H3	h	A	E	s	d2	d	R	d1 <sub>6g</sub>	Q	g	F1 (kN)
P701080.TM08X..01CIN	80	20	65	26	29	9	120	13	5	9	70	12.5	M8	45-70	72-79	10
P701080.TM10X..01CIN	80	20	65	26	29	9	120	13	5	9	70	12.5	M10	45-70	97-109	10
P701080.TM12X..01CIN	80	20	65	26	29	9	120	13	5	9	70	12.5	M12	45-70-100	107-124-168	10

Enter the selected stud length in place of the two dots . . in the item code. Customised stud length available for a minimum of 100 pieces.  
Attention: The expressed load limit F1 is lower than the break load by 30% and is intended as static.



Stock availability as % ()  
90% (●) - 40% (●) - 5% (●)

# P703



## TEARDROP MOUNTING FOOT WITH GROUND FIXING AND STEEL ARTICULATED STEM TYPE A - BALL R15

### Materials:

Reinforced polyamide.  
Resistant to oils and greases.

### Surface finish:

Satin.

### Colour:

Black (RAL 9011).

### Inserts:

#### P703:

Galvanised steel threaded and articulated stem (ball R.15) with hexagonal base (thread tolerance 6g).

#### P703CIN:

Stainless steel threaded and articulated stem (ball R.15) with hexagonal base (Aisi 303) (thread tolerance 6g).

### Non-slip base:

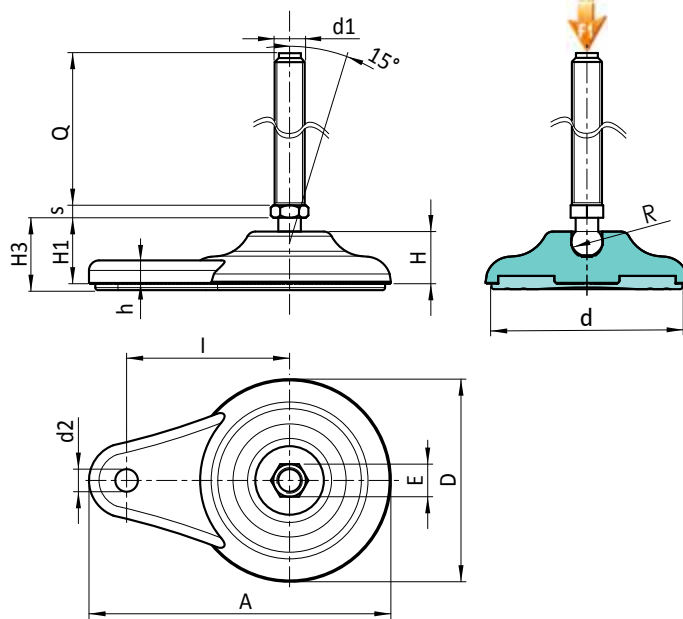
Non-slip base in thermoplastic rubber SBS 75 Shore, black RAL 9011.  
Resistant to oils and greases. Push-fit assembly.

### Ground fixing:

Through hole obtained by moulding the plastic.

### Special requests:

- Upon request and for special quantities inserts can be supplied with customised lengths.
- Upon request and for special quantities the foot can be supplied in Orange (RAL 2004).



### Version P703: Teardrop mounting foot with ground fixing - stem type A (with hexagonal base) and ball R15 - with SBS non-slip base

Art.	D	H	I	H1	H3	h	A	E	s	d2	d	R	d1 <sub>6g</sub>	Q	g	F1 (kN)
P703080.TM12X..01	80	20	65	26	29	9	120	16	6.5	9	70	15	M12	50-70-90-110	143-156-171-187	13
P703080.TM14X..01	80	20	65	26	29	9	120	16	6.5	9	70	15	M14	50-70-90-110-150	155-185-196-213-230-247	13
P703080.TM16X..01	80	20	65	26	29	9	120	16	6.5	9	70	15	M16	50-70-90-110-130-150-170-190	171-197-223-248-274-299-327-350	13

### Version P703CIN: Teardrop mounting foot with ground fixing - stem type A - stainless steel - (with hexagonal base) and ball R15 - with SBS

#### non-slip base

Art.	D	H	I	H1	H3	h	A	E	s	d2	d	R	d1 <sub>6g</sub>	Q	g	F1 (kN)
P703080.TM12X..01CIN	80	20	65	26	29	9	120	16	6.5	9	70	15	M12	70-90-110	156-171-187	13
P703080.TM14X..01CIN	80	20	65	26	29	9	120	16	6.5	9	70	15	M14	70-110-130	185-213-230	13
P703080.TM16X..01CIN	80	20	65	26	29	9	120	16	6.5	9	70	15	M16	50-70-90-110-130-150-170-190	171-197-223-248-274-299-327-350	13

Enter the selected stud length in place of the two dots . . in the item code. Customised stud length available for a minimum of 100 pieces.  
Attention: The expressed load limit F1 is lower than the break load by 30% and is intended as static.



# P705



## TEARDROP MOUNTING FOOT WITH GROUND FIXING AND STEEL ARTICULATED STEM TYPE B - BALL R12.4 AND NON-SLIP BASE

### Materials:

Reinforced polyamide.  
Resistant to oils and greases.

### Surface finish:

Satin.

### Colour:

Black (RAL 9011).

### Inserts:

#### P705:

Galvanised steel threaded and articulated stem (ball R.12.5) with milled seat for wrench (type B) (thread tolerance 6g).

#### P705CIN:

Stainless steel threaded and articulated stem (ball R.12.5) with milled seat for wrench (type B) (Aisi 303) (thread tolerance 6g).

### Non-slip base:

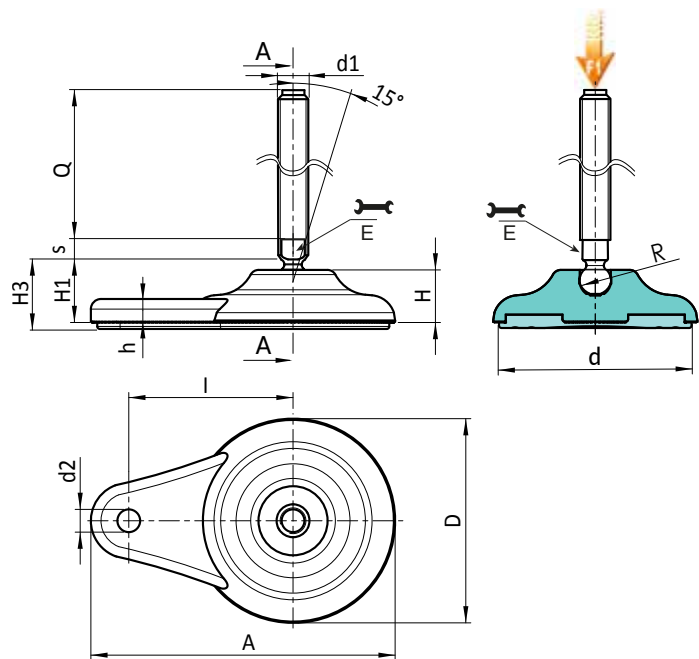
Non-slip base in thermoplastic rubber SBS 75 Shore, black RAL 9011. Resistant to oils and greases. Push-fit assembly.

### Ground fixing:

Through hole obtained by moulding the plastic.

### Special requests:

- Upon request and for special quantities inserts can be supplied with customised lengths.
- Upon request and for special quantities the foot can be supplied in Orange (RAL 2004).



Version P705: Teardrop mounting foot with ground fixing - stem type B (with milled seat for wrench) and ball R12.5 - with SBS non-slip base

Art.	D	H	I	H1	H3	h	A	E	s	d2	d	R	d1 <sub>6g</sub>	Q	g	F1 (kN)
P705080.TM16X..01	80	20	65	26	29	9	120	13	7	9	70	12.4	M16	70-90-110-130-150-170	179-205-231-257-283-309	10

Version P705CIN: Teardrop mounting foot with ground fixing - stem type B - stainless steel - (with milled seat for wrench) and ball R12.5 -

Art.	D	H	I	H1	H3	h	A	E	s	d2	d	R	d1 <sub>6g</sub>	Q	g	F1 (kN)
P705080.TM16X..01CIN	80	20	65	26	29	9	120	13	7	9	70	12.4	M16	110-130-150-170	231-257-283-309	10

Enter the selected stud length in place of the two dots . . in the item code. Customised stud length available for a minimum of 100 pieces.

Attention: The expressed load limit F1 is lower than the break load by 30% and is intended as static.



# P707



## TEARDROP MOUNTING FOOT WITH GROUND FIXING AND STEEL ARTICULATED STEM TYPE B - BALL R15 AND NON-SLIP BASE

### Materials:

Reinforced polyamide.  
Resistant to oils and greases.

### Surface finish:

Satin.

### Colour:

Black (RAL 9011).

### Inserts:

#### P707:

Galvanised steel threaded and articulated stem (ball R.15) with milled seat for wrench (type B) (thread tolerance 6g).

#### P707CIN:

Stainless steel threaded and articulated stem (ball R.15) with milled seat for wrench (type B) (Aisi 303) (thread tolerance 6g).

### Non-slip base:

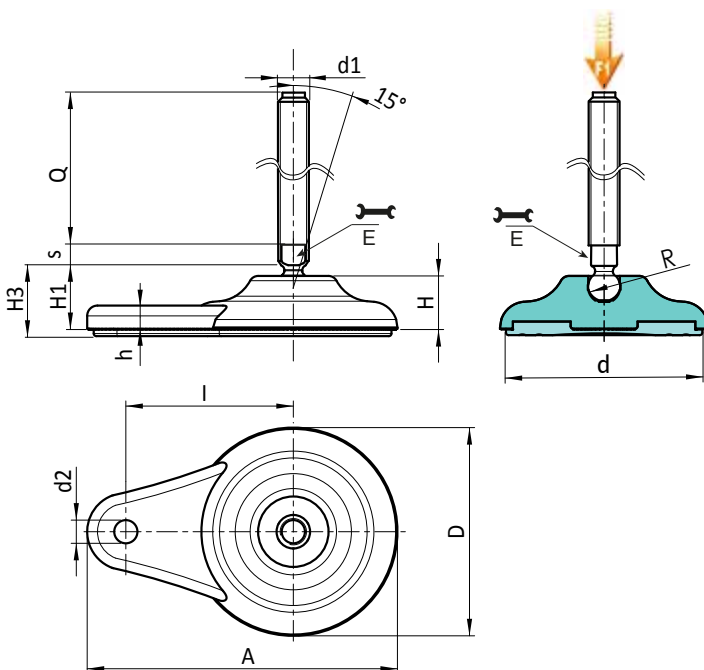
Non-slip base in thermoplastic rubber SBS 75 Shore, black RAL 9011. Resistant to oils and greases. Push-fit assembly.

### Ground fixing:

Through hole obtained by moulding the plastic.

### Special requests:

- Upon request and for special quantities inserts can be supplied with customised lengths.
- Upon request and for special quantities the foot can be supplied in Orange (RAL 2004).



### Version P707: Teardrop mounting foot with ground fixing - stem type B (with milled seat for wrench) and ball R15 - with SBS non-slip base

Art.	D	H	I	H1	H3	h	A	E	s	d2	d	R	d1 <sub>6g</sub>	Q	g	F1 (kN)
P707080.TM20X..01	80	20	65	26	29	9	120	16	7	9	70	15	M20	50-70-90-110-130-150-170-190-210	222-254-286-318-350-385-417-450-485	17
P707080.TM24X..01	80	20	65	26	29	9	120	19	7	9	70	15	M24	150-170-190-210	590-650-710-770	17

### Version P707CIN: Teardrop mounting foot with ground fixing - stem type B - stainless steel - (with milled seat for wrench) and ball R15 - with

#### SBS non-slip base

Art.	D	H	I	H1	H3	h	A	E	s	d2	d	R	d1 <sub>6g</sub>	Q	g	F1 (kN)
P707080.TM20X..01CIN	80	20	65	26	29	9	120	16	7	9	70	15	M20	70-90-130-150-190-210	254-286-350-385-450-485	17
P707080.TM24X..01CIN	80	20	65	26	29	9	120	19	7	9	70	15	M24	110-150-190	470-590-710	17

Enter the selected stud length in place of the two dots . . in the item code. Customised stud length available for a minimum of 100 pieces.  
Attention: The expressed load limit F1 is lower than the break load by 30% and is intended as static.



# P709



## TEARDROP MOUNTING FOOT WITH GROUND FIXING AND STEEL ARTICULATED STEM TYPE B - BALL R24 AND NON-SLIP BASE

### Materials:

Reinforced polyamide.  
Resistant to oils and greases.

### Surface finish:

Satin.

### Colour:

Black (RAL 9011).

### Inserts:

#### P709:

Galvanised steel threaded and articulated stem (ball R.24) with milled seat for wrench (type B) (thread tolerance 6g).

#### P709CIN:

Stainless steel threaded and articulated stem (ball R.24) with milled seat for wrench (type B) (Aisi 304) (thread tolerance 6g).

### Non-slip base:

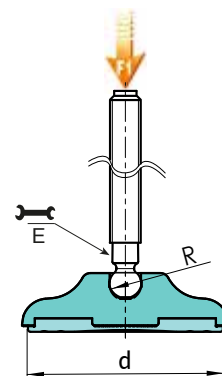
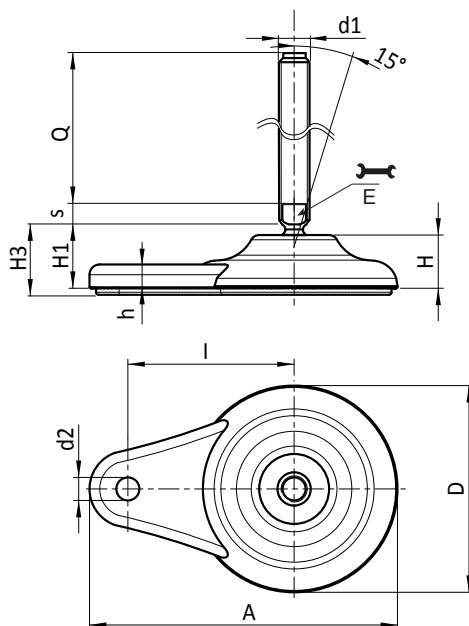
Non-slip base in thermoplastic rubber SBS 75 Shore, black RAL 9011. Resistant to oils and greases. Push-fit assembly.

### Ground fixing:

Through hole obtained by moulding the plastic.

### Special requests:

- Upon request and for special quantities inserts can be supplied with customised lengths.
- Upon request and for special quantities the foot can be supplied in Orange (RAL 2004).



### Version P709: Teardrop mounting foot with ground fixing - stem type B (with milled seat for wrench) and ball R24 - with SBS non-slip base

Art.	D	H	I	H1	H3	h	A	E	s	d2	d	R	d1 <sub>6g</sub>	Q	g	F1 (kN)
P709080.TM24X..01	80	20	65	32	35	9	120	19	10	9	70	24	M24	110-130-150-170	469-529-589-649	25
P709080.TM30X..01	80	20	65	32	35	9	120	27	12	9	70	24	M30	110-130-150-170-190-210	629-716-804-892-979-1069	25

### Version P709CIN: Foot with lateral ground fixing - stem type B - stainless steel - (with milled seat for wrench) and ball R24 - with SBS non-slip base



Art.	D	H	I	H1	H3	h	A	E	s	d2	d	R	d1 <sub>6g</sub>	Q	g	F1 (kN)
P709080.TM24X..01CIN	80	20	65	32	35	9	120	19	10	9	70	24	M24	110-130-150-190	469-529-589-709	25
P709080.TM30X..01CIN	80	20	65	32	35	9	120	27	12	9	70	24	M30	130-170-210	716-892-1069	25

Enter the selected stud length in place of the two dots . . in the item code. Customised stud length available for a minimum of 100 pieces.

Attention: The expressed load limit F1 is lower than the break load by 30% and is intended as static.



Stock availability as % (🛒)  
90% (●) - 40% (●) - 5% (●)

# P800



## MOUNTING FOOT WITH REVOLVING STEM AND GROUND FIXING

### Materials:

Reinforced polyamide.  
Resistant to oils and greases.

### Surface finish:

Satin.

### Colour:

Black (RAL 9011).

### Inserts:

Galvanised steel non-articulated revolving threaded stem, fixed with a nut.

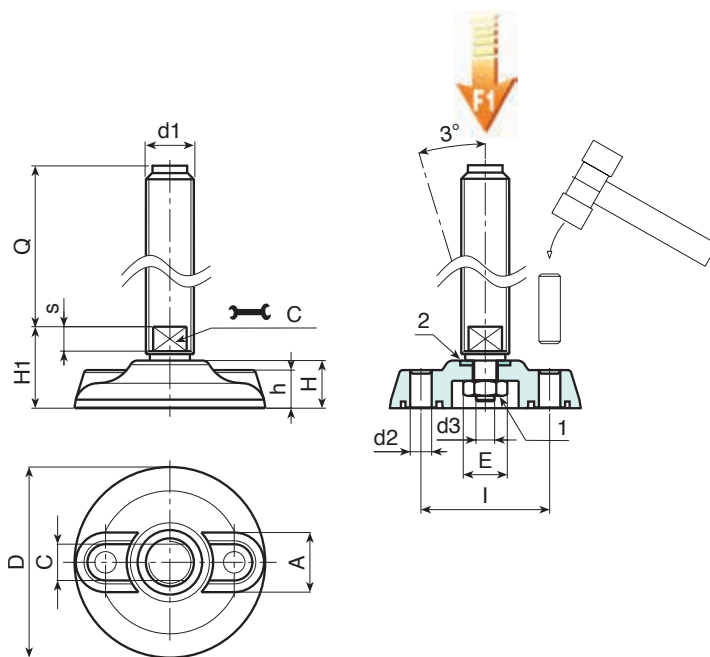
- (1) Stainless steel self-locking nut (Aisi 304) thin series UNI 7474.
- (2) Stainless steel washer (Aisi 304).

### Ground fixing:

The mounting foot is supplied with closed holes for anchoring to the ground. To open them pierce the plastic membrane (see drawing).

### Special requests:

- Upon request and for special quantities inserts can be supplied with customised lengths.
- Upon request and for special quantities the foot can be supplied in Orange (RAL 2004).



### Version P800: Mounting foot with revolving stem and fixed with a nut.

Art.	D	H	I	H1	h	A	s	d2	d3	C	d1	Q		F1 (kN)
P800080.TM12X..01	80	20	54	28	16	20	8	9	M8	10	M12	50-90	130-143	13
P800080.TM14X11001	80	20	54	28	16	20	8	9	M8	12	M14	110	181	13
P800080.TM16X15001	80	20	54	28	16	20	8	9	M8	13	M16	150	274	13
P800105.TM16X15001	105	22	74	30	18.5	21	8	11	M10	13	M16	150	324	15
P800105.TM20X..01	105	22	74	30	18.5	21	8	11	M10	17	M20	150-190	417-500	15
P800105.TM24X..01	105	22	74	30	18.5	21	8	11	M10	19	M24	150-190	553-673	15
P800105.TM30X..01	105	22	74	30	18.5	21	8	11	M10	24	M30	150-190	866-1055	15
P800130.TM16X..01	130	24	99	32	20	21	8	13	M10	13	M16	90-150	243-324	17
P800130.TM20X..01	130	24	99	32	20	21	8	13	M10	17	M20	110-150-190	404-485-565	17
P800130.TM24X..01	130	24	99	32	20	21	8	13	M10	17	M24	150-190	618-738	17
P800130.TM30X..01	130	24	99	32	20	21	8	13	M10	24	M30	150-190	931-1120	17

Enter the selected stud length in place of the two dots . . in the item code. Customised stud length available for a minimum of 100 pieces.

Attention: The expressed load limit F1 is lower than the break load by 30% and is intended as static.



# P801



## MOUNTING FOOT WITH REVOLVING STEM AND GROUND FIXING

### Materials:

Reinforced polyamide.  
Resistant to oils and greases.

### Surface finish:

Satin.

### Colour:

Black (RAL 9011).

### Inserts:

Galvanised steel non-articulated revolving threaded stem, fixed with a circlip.

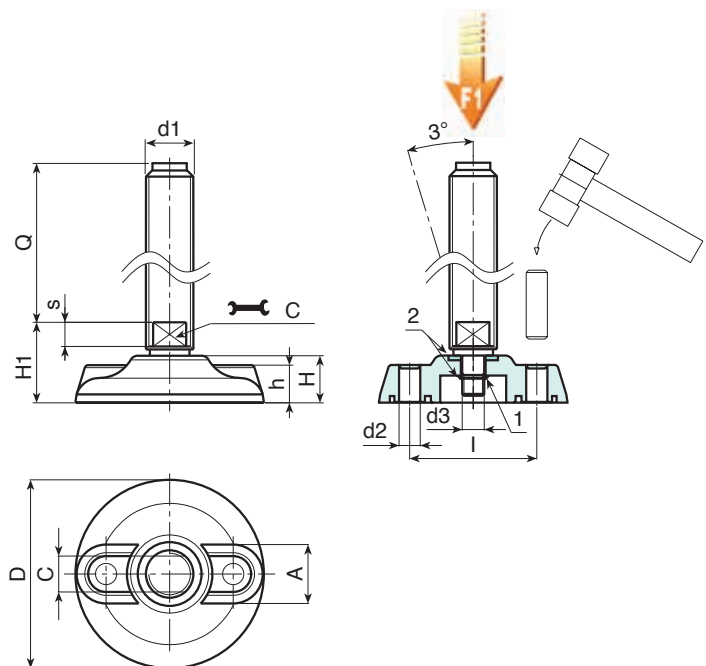
- (1) Circlip in black oxide treated steel UNI 7435.
- (2) Stainless steel washer (Aisi 304).

### Ground fixing:

The mounting foot is supplied with closed holes for anchoring to the ground. To open them pierce the plastic membrane (see drawing).

### Special requests:

- Upon request and for special quantities inserts can be supplied with customised lengths.
- Upon request and for special quantities the foot can be supplied in Orange (RAL 2004).



### Version P801: Mounting foot with revolving stem and fixed with a circlip.

Art.	D	H	I	H1	h	A	s	d2	d3	C	d1	Q	g	F1 (kN)
P801080.TM12X..01	80	20	54	28	16	20	8	9	8	12	M12	50-90	130-143	13
P801080.TM14X11001	80	20	54	28	16	20	8	9	8	12	M14	110	175	13
P801080.TM16X15001	80	20	54	28	16	20	8	9	8	13	M16	150	274	13
P801105.TM16X15001	105	22	74	30	18.5	21	8	11	10	13	M16	150	324	15
P801105.TM20X..01	105	22	74	30	18.5	21	8	11	10	17	M20	150-190	417-500	15
P801105.TM24X..01	105	22	74	30	18.5	21	8	11	10	19	M24	150-190	553-673	15
P801105.TM30X..01	105	22	74	30	18.5	21	8	11	10	24	M30	150-190	866-1055	15
P801130.TM16X..01	130	24	99	32	20	21	8	13	10	13	M16	90-150	310-391	17
P801130.TM20X..01	130	24	99	32	20	21	8	13	10	17	M20	110-150-190	404-485-565	17
P801130.TM24X..01	130	24	99	32	20	21	8	13	10	19	M24	150-190	618-738	17
P801130.TM30X..01	130	24	99	32	20	21	8	13	10	24	M30	150-190	931-1120	17

Enter the selected stud length in place of the two dots . . in the item code. Customised stud length available for a minimum of 100 pieces.

Attention: The expressed load limit F1 is lower than the break load by 30% and is intended as static.



Stock availability as % (🛒)  
90% (●) - 40% (●) - 5% (●)



# P530



## FULL STEEL MOUNTING FOOT WITH ARTICULATED STEM TYPE A - BALL R12.5

### Materials:

#### P530:

Turned free-cutting steel mounting foot base.

#### P530CIN:

Turned stainless steel mounting foot base (Aisi 303).

### Surface finish:

Smooth.

### Colour:

#### P530:

Standard blue galvanising.

#### P530CIN:

Natural.

### Inserts:

#### P530:

Galvanised steel threaded and articulated stem (ball R.12.5) with hexagonal base (thread tolerance 6g).

#### P530CIN:

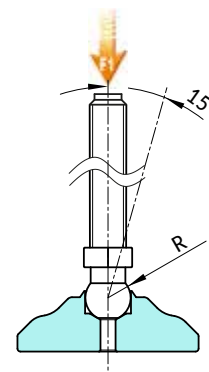
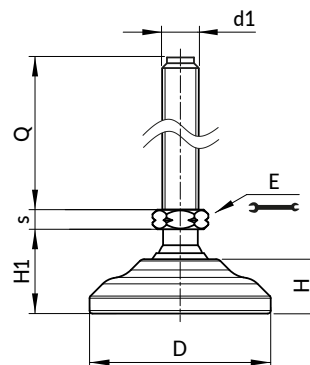
Stainless steel threaded and articulated stem (ball R.12.5) with hexagonal base (Aisi 303) (thread tolerance 6g).

### Stem fixing method:

The stem cannot be disassembled. The ball cannot be removed as the edge of its seat has been pressed in.

### Special requests:

- Upon request and for special quantities inserts can be supplied with customised lengths.



### Version P530: Galvanised steel mounting foot with stem type A (with hexagonal base) and ball R12.5

Art.	D	H	H1	E	s	R	d1 <sub>6g</sub>	Q	g	F1 (kN)
P53040.VZM08X..	40	11,5	20	13	5	15	M8	45-70	132-139	50
P53040.VZM10X..	40	11,5	20	13	5	12,5	M10	45-70-100	140-152-179	23
P53040.VZM12X..	40	11,5	20	13	5	12,5	M12	45-70-100	149-168-188	23
P53060.VZM08X..	60	18	28	13	5	12,5	M8	45-70	295-302	13
P53050.VZM10X..	50	13,5	23	13	5	12,5	M10	45-70-100	203-215-240	23
P53050.VZM12X..	50	13,5	23	13	5	12,5	M12	45-70-100	212-231-251	23
P53060.VZM08X..	60	18	28	13	5	12,5	M8	45-70	295-302	13
P53060.VZM10X..	60	18	28	13	5	12,5	M10	45-70-100	303-315-340	23
P53060.VZM12X..	60	18	28	13	5	12,5	M12	45-70-100	312-331-351	23

### Version P530CIN: Stainless steel mounting foot with stem type A (with hexagonal base) and ball R12.5

INOX

Art.	D	H	H1	E	s	R	d1 <sub>6g</sub>	Q	g	F1 (kN)
P53040.INM08X..CIN	40	11,5	20	13	5	12,5	M8	45-70	132-139	13
P53040.INM10X..CIN	40	11,5	20	13	5	12,5	M10	45-70-100	140-152-179	23
P53040.INM12X..CIN	40	11,5	20	13	5	12,5	M12	45-70-100	149-168-188	23
P53050.INM08X..CIN	50	13,5	23	13	5	12,5	M8	45-70	195-202	13
P53050.INM10X..CIN	50	13,5	23	13	5	12,5	M10	45-70-100	203-215-240	23
P53050.INM12X..CIN	50	13,5	23	13	5	12,5	M12	45-70-100	212-231-251	23
P53060.INM08X..CIN	60	18	28	13	5	12,5	M8	45-70	295-302	13
P53060.INM10X..CIN	60	18	28	13	5	12,5	M10	45-70-100	303-315-340	23
P53060.INM12X..CIN	60	18	28	13	5	12,5	M12	45-70-100	312-331-351	23

Enter the selected stud length in place of the two dots . . in the item code. Customised stud length available for a minimum of 100 pieces.

Attention: The expressed load limit F1 is lower than the break load by 30% and is intended as static.



# P531



## FULL STEEL MOUNTING FOOT WITH ARTICULATED STEM TYPE A - BALL R15

### Materials:

#### P531:

Turned free-cutting steel mounting foot base.

#### P531CIN:

Turned stainless steel mounting foot base (Aisi 303).

### Surface finish:

Smooth.

### Colour:

#### P531:

Standard blue galvanising.

#### P531CIN:

Natural.

### Inserts:

#### P531:

Galvanised steel threaded and articulated stem (ball R.15) with hexagonal base (thread tolerance 6g).

#### P531CIN:

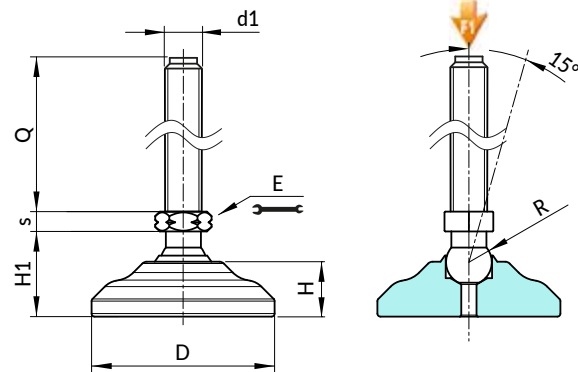
Stainless steel threaded and articulated stem (ball R.15) with hexagonal base (Aisi 303) (thread tolerance 6g).

### Stem fixing method:

The stem cannot be disassembled. The ball cannot be removed as the edge of its seat has been pressed in.

### Special requests:

- Upon request and for special quantities inserts can be supplied with customised lengths.



### Version P531: Galvanised steel mounting foot with stem type A (with hexagonal base) and ball R15

Art.	D	H	H1	E	s	R	d1 <sub>6g</sub>	Q	g	F1 (kN)
P53140.VZM12X..	40	11.5	20	16	6.5	15	M12	50-70-90-110	166-179-194-210	33
P53140.VZM14X..	40	11.5	20	16	6.5	15	M14	50-70-90-110-130-150	178-198-219-236-253-270	33
P53140.VZM16X..	40	11.5	20	16	6.5	15	M16	50-70-90-110-130-150-170-190	194-220-246-271-297-322-350-373	50
P53150.VZM12X..	50	13.5	23	16	6.5	15	M12	50-70-90-110	229-242-257-273	33
P53150.VZM14X..	50	13.5	23	16	6.5	15	M14	50-70-90-110-130-150	241-261-282-299-316-333	33
P53150.VZM16X..	50	13.5	23	16	6.5	15	M16	50-70-90-110-130-150-170-190	257-283-309-334-360-385-413-436	50
P53160.VZM12X..	60	18	28	16	6.5	15	M12	50-70-90-110	329-342-357-373	33
P53160.VZM14X..	60	18	28	16	6.5	15	M14	50-70-90-110-130-150	341-361-382-399-416-433	33
P53160.VZM16X..	60	18	28	16	6.5	15	M16	50-70-90-110-130-150-170-190	357-383-409-434-460-485-513-536	50

### Version P531: Galvanised steel mounting foot with stem type A (with hexagonal base) and ball R15

Art.	D	H	H1	E	s	R	d1 <sub>6g</sub>	Q	g	F1 (kN)
P53140.VZM12X..	40	11.5	20	16	6.5	15	M12	50-70-90-110	166-179-194-210	33
P53140.VZM14X..	40	11.5	20	16	6.5	15	M14	50-70-90-110-130-150	178-198-219-236-253-270	33
P53140.VZM16X..	40	11.5	20	16	6.5	15	M16	50-70-90-110-130-150-170-190	194-220-246-271-297-322-350-373	50
P53150.VZM12X..	50	13.5	23	16	6.5	15	M12	50-70-90-110	229-242-257-273	33
P53150.VZM14X..	50	13.5	23	16	6.5	15	M14	50-70-90-110-130-150	241-261-282-299-316-333	33
P53150.VZM16X..	50	13.5	23	16	6.5	15	M16	50-70-90-110-130-150-170-190	257-283-309-334-360-385-413-436	50
P53160.VZM12X..	60	18	28	16	6.5	15	M12	50-70-90-110	329-342-357-373	33
P53160.VZM14X..	60	18	28	16	6.5	15	M14	50-70-90-110-130-150	341-361-382-399-416-433	33
P53160.VZM16X..	60	18	28	16	6.5	15	M16	50-70-90-110-130-150-170-190	357-383-409-434-460-485-513-536	50

# P532



## FULL STEEL MOUNTING FOOT WITH ARTICULATED STEM TYPE B - BALL R12.4

### Materials:

#### P532:

Turned free-cutting steel mounting foot base.

#### P532CIN:

Turned stainless steel mounting foot base (Aisi 303).

### Surface finish:

Smooth.

### Colour:

#### P532:

Standard blue galvanising.

#### P532CIN:

Natural.

### Inserts:

#### P532:

Galvanised steel threaded and articulated stem (ball R.12.5) with milled seat for wrench (type B) (thread tolerance 6g).

#### P532CIN:

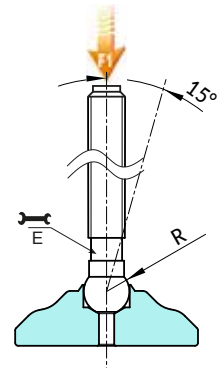
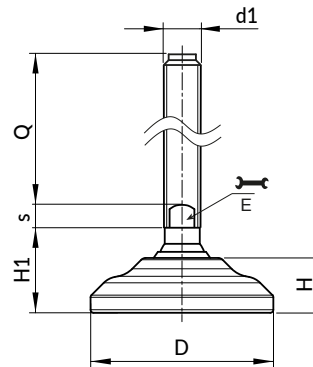
Stainless steel threaded and articulated stem (ball R.12.5) with milled seat for wrench (type B) (Aisi 303) (thread tolerance 6g).

### Stem fixing method:

The stem cannot be disassembled. The ball cannot be removed as the edge of its seat has been pressed in.

### Special requests:

- Upon request and for special quantities inserts can be supplied with customised lengths.



### Version P532: Galvanised steel mounting foot with stem type B (with milled seat for wrench) and ball R12.5

Art.	D	H	H1	E	s	R	d1 <sub>6g</sub>	Q		F1 (kN)
P53260.VZM16X..	60	18	28	13	7	12.5	M16	50-70-90-110-130-150-170	338-364-390-416-442-468-494	23

### Version P532CIN: Stainless steel mounting foot with stem type B (with milled seat for wrench) and ball R12.5



Art.	D	H	H1	E	s	R	d1 <sub>6g</sub>	Q		F1 (kN)
P53260.INM16X..CIN	60	18	28	13	7	12.4	M16	50-70-90-110-130-150-170	338-364-390-416-442-468-494	23

Enter the selected stud length in place of the two dots . . in the item code. Customised stud length available for a minimum of 100 pieces.

Attention: The expressed load limit F1 is lower than the break load by 30% and is intended as static.



# P533



## FULL STEEL MOUNTING FOOT WITH ARTICULATED STEM TYPE B - BALL R15

### Materials:

#### P533:

Turned free-cutting steel mounting foot base.

#### P533CIN:

Turned stainless steel mounting foot base (Aisi 303).

### Surface finish:

Smooth.

### Colour:

#### P533:

Standard blue galvanising.

#### P533CIN:

Natural.

### Inserts:

#### P533:

Galvanised steel threaded and articulated stem (ball R.15) with milled seat for wrench (type B) (thread tolerance 6g).

#### P533CIN:

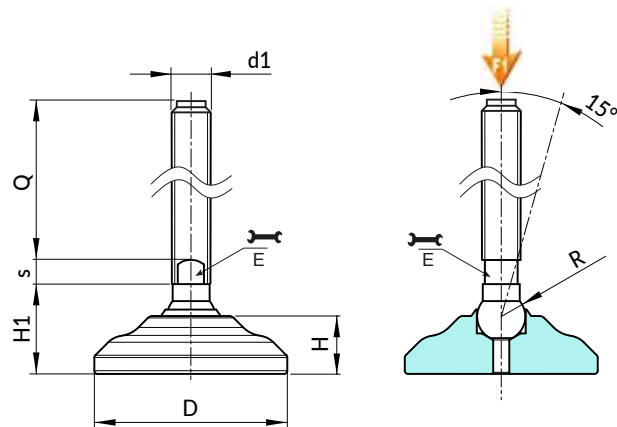
Stainless steel threaded and articulated stem (ball R.15) with milled seat for wrench (type B) (Aisi 304) (thread tolerance 6g).

### Stem fixing method:

The stem cannot be disassembled. The ball cannot be removed as the edge of its seat has been pressed in.

### Special requests:

- Upon request and for special quantities inserts can be supplied with customised lengths.



### Version P533: Galvanised steel mounting foot with stem type B (with milled seat for wrench) and ball R15

Art.	D	H	H1	E	s	R	d1 <sub>6g</sub>	Q		F1 (kN)
P53340.VZM20X..	40	11,5	20	13	5	15	M20	45-70	132-139	50
P53350.VZM20X..	50	13,5	23	16	7	15	M20	90-110-130-150-170-190-210	372-404-436-471-503-536-571	50
P53360.VZM20X..	60	18	28	16	7	15	M20	90-110-130-150-170-190-210	472-504-536-571-603-636-671	50
P53340.VZM24X..	40	11,5	20	19	7	15	M24	90-110-130-150-170-190-210	433-493-553-613-673-733-793	50
P53350.VZM24X..	50	13,5	23	19	7	15	M24	90-110-130-150-170-190-210	496-556-616-676-736-796-856	50
P53360.VZM24X..	60	18	28	19	7	15	M24	90-110-130-150-170-190-210	596-656-716-776-836-896-956	50

### Version P533CIN: Stainless steel mounting foot with stem type B (with milled seat for wrench) and ball R15



Art.	D	H	H1	E	s	R	d1 <sub>6g</sub>	Q		F1 (kN)
P53340.INM20X..CIN	40	11,5	20	16	7	15	M20	90-110-130-150-170-190-210	309-341-373-408-440-473-508	50
P53350.INM20X..CIN	50	13,5	23	16	7	15	M20	90-110-130-150-170-190-210	372-404-436-471-503-536-571	50
P53360.INM20X..CIN	60	18	28	16	7	15	M20	90-110-130-150-170-190-210	472-504-536-571-603-636-671	50
P53340.INM24X..CIN	40	11,5	20	19	7	15	M24	90-110-130-150-170-190-210	433-493-553-613-673-733-793	50
P53350.INM24X..CIN	50	13,5	23	19	7	15	M24	90-110-130-150-170-190-210	496-556-616-676-736-796-856	50

Enter the selected stud length in place of the two dots . . in the item code. Customised stud length available for a minimum of 100 pieces.

Attention: The expressed load limit F1 is lower than the break load by 30% and is intended as static.



Stock availability as % ()  
90% (●) - 40% (●) - 5% (●)

# P534



## FULL STEEL MOUNTING FOOT WITH ARTICULATED STEM TYPE A - BALL R24

### Materials:

#### P534:

Turned free-cutting steel mounting foot base.

#### P534CIN:

Turned stainless steel mounting foot base (Aisi 303).

### Surface finish:

Smooth.

### Colour:

#### P534:

Standard blue galvanising.

#### P534CIN:

Natural.

### Inserts:

#### P534:

Galvanised steel threaded and articulated stem (ball R.24) with hexagonal base (thread tolerance 6g).

#### P534CIN:

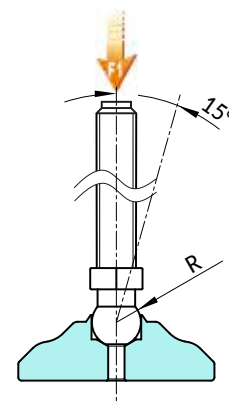
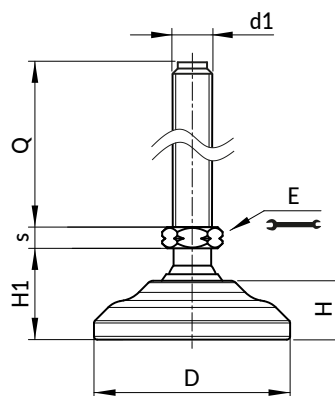
Stainless steel threaded and articulated stem (ball R.24) with hexagonal base (Aisi 303) (thread tolerance 6g).

### Stem fixing method:

The stem cannot be disassembled. The ball cannot be removed as the edge of its seat has been pressed in.

### Special requests:

- Upon request and for special quantities inserts can be supplied with customised lengths.



### Version P534: Galvanised steel mounting foot with stem type A (with hexagonal base) and ball R24

Art.	D	H	H1	E	s	R	d1 <sub>6g</sub>	Q	g	F1 (kN)
P53460.VZM16X..	60	18	40	13	7	24	M16	90-110-130-150-170	-	60
P53460.VZM20X..	60	18	40	16	7	24	M20	90-110-130-150-170	-	90

### Version P534CIN: Stainless steel mounting foot with stem type A (with hexagonal base) and ball R24



Art.	D	H	H1	E	s	R	d1 <sub>6g</sub>	Q	g	F1 (kN)
P53460.INM16X..CIN	60	18	40	13	7	24	M16	90-110-130-150-170	-	60
P53460.INM20X..CIN	60	18	40	16	7	24	M20	90-110-130-150-170	-	90

Enter the selected stud length in place of the two dots . . in the item code. Customised stud length available for a minimum of 100 pieces.

Attention: The expressed load limit F1 is lower than the break load by 30% and is intended as static.



# P540



## FULL STEEL MOUNTING FOOT WITH ARTICULATED STEM TYPE A - BALL R12.4 AND NON-SLIP BASE

### Materials:

#### P540:

Turned free-cutting steel mounting foot base.

#### P540CIN:

Turned stainless steel mounting foot base (Aisi 303).

### Surface finish:

Smooth.

### Colour:

#### P540:

Standard blue galvanising.

#### P540CIN:

Natural.

### Inserts:

#### P540:

Galvanised steel threaded and articulated stem (ball R.12.5) with hexagonal base (thread tolerance 6g).

#### P540CIN:

Stainless steel threaded and articulated stem (ball R.12.5) with hexagonal base (Aisi 303) (thread tolerance 6g).

### Stem fixing method:

The stem cannot be disassembled. The ball cannot be removed as the edge of its seat has been pressed in.

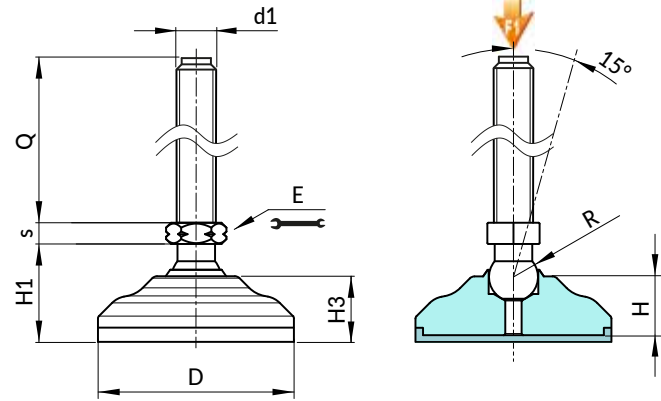
### Non-slip base:

Non-slip base in thermoplastic rubber SBS 75 Shore, black RAL 9011.

Resistant to oils and greases. Push-fit assembly.

### Special requests:

- Upon request and for special quantities inserts can be supplied with customised lengths.



### Version P540: Galvanised steel mounting foot with stem type A (with hexagonal base) and ball R12.5 - with SBS non-slip base

Art.	D	H	H1	H3	E	s	R	d1 <sub>6g</sub>	Q	g	F1 (kN)
P54040.VZM08X..	40	15	26	17.5	13	5	12.5	M8	45-70	136-143	13
P54040.VZM10X..	40	15	26	17.5	13	5	12.5	M10	45-70-100	144-156-183	23
P54040.VZM12X..	40	15	26	17.5	13	5	12.5	M12	45-70-100	153-172-192	23
P54050.VZM08X..	50	17.5	29.5	20	13	5	12.5	M8	45-70	205-212	13
P54050.VZM10X..	50	17.5	29.5	20	13	5	12.5	M10	45-70-100	213-225-250	23
P54050.VZM12X..	50	17.5	29.5	20	13	5	12.5	M12	45-70-100	222-241-261	23
P54060.VZM08X..	60	19.5	32	22	13	5	12.5	M8	45-70	310-317	13
P54060.VZM10X..	60	19.5	32	22	13	5	12.5	M10	45-70-100	318-330-355	23
P54060.VZM12X..	60	19.5	32	22	13	5	12.5	M12	45-70-100	327-346-366	23

### Version P540CIN: Stainless steel mounting foot with stem type A (with hexagonal base) and ball R12.5 - with SBS non-slip base

INOX

Art.	D	H	H1	H3	E	s	R	d1 <sub>6g</sub>	Q	g	F1 (kN)
P54040.INM08X..CIN	40	15	26	17.5	13	5	12.5	M8	45-70	136-143	13
P54040.INM10X..CIN	40	15	26	17.5	13	5	12.5	M10	45-70-100	144-156-183	23
P54040.INM12X..CIN	40	15	26	17.5	13	5	12.5	M12	45-70-100	153-172-192	23
P54050.INM08X..CIN	50	17.5	29.5	20	13	5	12.5	M8	45-70	205-212	13
P54050.INM10X..CIN	50	17.5	29.5	20	13	5	12.5	M10	45-70-100	213-225-250	23
P54050.INM12X..CIN	50	17.5	29.5	20	13	5	12.5	M12	45-70-100	222-241-261	23
P54060.INM08X..CIN	60	19.5	32	22	13	5	12.5	M8	45-70	310-317	13
P54060.INM10X..CIN	60	19.5	32	22	13	5	12.5	M10	45-70-100	318-330-355	23
P54060.INM12X..CIN	60	19.5	32	22	13	5	12.5	M12	45-70-100	327-346-366	23

Enter the selected stud length in place of the two dots . . in the item code. Customised stud length available for a minimum of 100 pieces.

Attention: The expressed load limit F1 is lower than the break load by 30% and is intended as static.



# P541



AVP

Aisi 303

SBS

UL94 HB



## FULL STEEL MOUNTING FOOT WITH ARTICULATED STEM TYPE A - BALL R15 AND NON-SLIP BASE

### Materials:

#### P541:

Turned free-cutting steel mounting foot base.

#### P541CIN:

Turned stainless steel mounting foot base (Aisi 303).

### Surface finish:

Smooth.

### Colour:

Standard blue galvanising.

#### P541:

Standard blue galvanising.

#### P541CIN:

Natural.

### Inserts:

#### P541:

Galvanised steel threaded and articulated stem (ball R.15) with hexagonal base (thread tolerance 6g).

#### P541CIN:

Stainless steel threaded and articulated stem (ball R.15) with hexagonal base (Aisi 303) (thread tolerance 6g).

### Stem fixing method:

The stem cannot be disassembled. The ball cannot be removed as the edge of its seat has been pressed in.

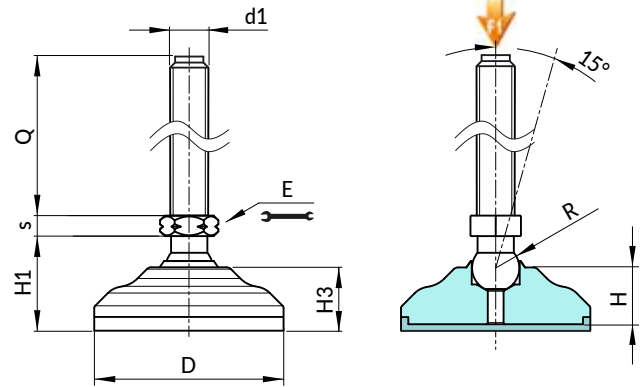
### Non-slip base:

Non-slip base in thermoplastic rubber SBS 75 Shore, black RAL 9011.

Resistant to oils and greases. Push-fit assembly.

### Special requests:

- Upon request and for special quantities inserts can be supplied with customised lengths.



### Version P531: Galvanised steel mounting foot with stem type A (with hexagonal base) and ball R15

Art.	D	H	H1	E	s	R	d1 <sub>6g</sub>	Q	g	F1 (kN)
P53140.VZM12X..	40	11.5	20	16	6.5	15	M12	50-70-90-110	166-179-194-210	33
P53140.VZM14X..	40	11.5	20	16	6.5	15	M14	50-70-90-110-130-150	178-198-219-236-253-270	33
P53140.VZM16X..	40	11.5	20	16	6.5	15	M16	50-70-90-110-130-150-170-190	194-220-246-271-297-322-350-373	50
P53150.VZM12X..	50	13.5	23	16	6.5	15	M12	50-70-90-110	229-242-257-273	33
P53150.VZM14X..	50	13.5	23	16	6.5	15	M14	50-70-90-110-130-150	241-261-282-299-316-333	33
P53150.VZM16X..	50	13.5	23	16	6.5	15	M16	50-70-90-110-130-150-170-190	257-283-309-334-360-385-413-436	50
P53160.VZM12X..	60	18	28	16	6.5	15	M12	50-70-90-110	329-342-357-373	33
P53160.VZM14X..	60	18	28	16	6.5	15	M14	50-70-90-110-130-150	341-361-382-399-416-433	33
P53160.VZM16X..	60	18	28	16	6.5	15	M16	50-70-90-110-130-150-170-190	357-383-409-434-460-485-513-536	50

### Version P531CIN: Stainless steel mounting foot with stem type A (with hexagonal base) and ball R15

INOX

Art.	D	H	H1	E	s	R	d1 <sub>6g</sub>	Q	g	F1 (kN)
P53140.INM12X..CIN	40	11.5	20	16	6.5	15	M12	50-70-90-110	166-179-194-210	33
P53140.INM14X..CIN	40	11.5	20	16	6.5	15	M14	50-70-90-110-130-150	178-198-219-236-253-270	33
P53140.INM16X..CIN	40	11.5	20	16	6.5	15	M16	50-70-90-110-130-150-170-190	194-220-246-271-297-322-350-373	50
P53150.INM12X..CIN	50	13.5	23	16	6.5	15	M12	50-70-90-110	229-242-257-273	33
P53150.INM14X..CIN	50	13.5	23	16	6.5	15	M14	50-70-90-110-130-150	241-261-282-299-316-333	33
P53150.INM16X..CIN	50	13.5	23	16	6.5	15	M16	50-70-90-110-130-150-170-190	257-283-309-334-360-385-413-436	50
P53160.INM12X..CIN	60	18	28	16	6.5	15	M12	50-70-90-110	329-342-357-373	33
P53160.INM14X..CIN	60	18	28	16	6.5	15	M14	50-70-90-110-130-150	341-361-382-399-416-433	33
P53160.INM16X..CIN	60	18	28	16	6.5	15	M16	50-70-90-110-130-150-170-190	357-383-409-434-460-485-513-536	50

# P542



## FULL STEEL MOUNTING FOOT WITH ARTICULATED STEM TYPE B - BALL R12.4 AND NON-SLIP BASE

### Materials:

#### P542:

Turned free-cutting steel mounting foot base.

#### P542CIN:

Turned stainless steel mounting foot base (Aisi 303).

### Surface finish:

Smooth.

### Colour:

#### P542:

Standard blue galvanising.

#### P542CIN:

Natural.

### Inserts:

#### P542:

Galvanised steel threaded and articulated stem (ball R.12.5) with milled seat for wrench (type B) (thread tolerance 6g).

#### P542CIN:

Stainless steel threaded and articulated stem (ball R.12.5) with milled seat for wrench (type B) (Aisi 303) (thread tolerance 6g).

### Stem fixing method:

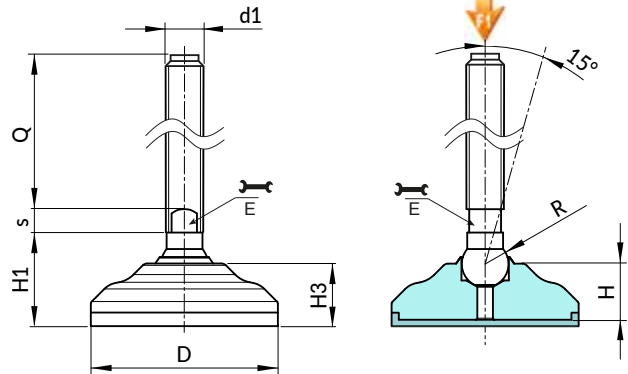
The stem cannot be disassembled. The ball cannot be removed as the edge of its seat has been pressed in.

### Non-slip base:

Non-slip base in thermoplastic rubber SBS 75 Shore, black RAL 9011. Resistant to oils and greases. Push-fit assembly.

### Special requests:

- Upon request and for special quantities inserts can be supplied with customised lengths.



### Version P542: Galvanised steel mounting foot with stem type B (with milled seat for wrench) and ball R12.5 - with SBS non-slip base

Art.	D	H	H1	H3	E	s	R	d1 <sup>6g</sup>	Q		F1 (kN)
P54260.VZM16X..	60	19.5	32	22	13	7	12.5	M16	50-70-90-110-130-150-170	352-379-405-431-457-483-509	23

### Version P542CIN: Stainless steel foot with stem type B (with milled seat for wrench) and ball R12.5 - with SBS non-slip base



Art.	D	H	H1	H3	E	s	R	d1 <sup>6g</sup>	Q		F1 (kN)
P54260.INM16X..CIN	60	19.5	32	22	13	7	12.5	M16	50-70-90-110-130-150-170	352-379-405-431-457-483-509	23

Enter the selected stud length in place of the two dots . . in the item code. Customised stud length available for a minimum of 100 pieces.

Attention: The expressed load limit F1 is lower than the break load by 30% and is intended as static.





# P543



## FULL STEEL MOUNTING FOOT WITH ARTICULATED STEM TYPE B - BALL R15 AND NON-SLIP BASE

### Materials:

#### P543:

Turned free-cutting steel mounting foot base.

#### P543CIN:

Turned stainless steel mounting foot base (Aisi 303).

### Surface finish:

Smooth.

### Colour:

#### P543:

Standard blue galvanising.

#### P543CIN:

Natural.

### Inserts:

#### P543:

Galvanised steel threaded and articulated stem (ball R.15) with milled seat for wrench (type B) (thread tolerance 6g).

#### P543CIN:

Stainless steel threaded and articulated stem (ball R.15) with milled seat for wrench (type B) (Aisi 304) (thread tolerance 6g).

### Stem fixing method:

The stem cannot be disassembled. The ball cannot be removed as the edge of its seat has been pressed in.

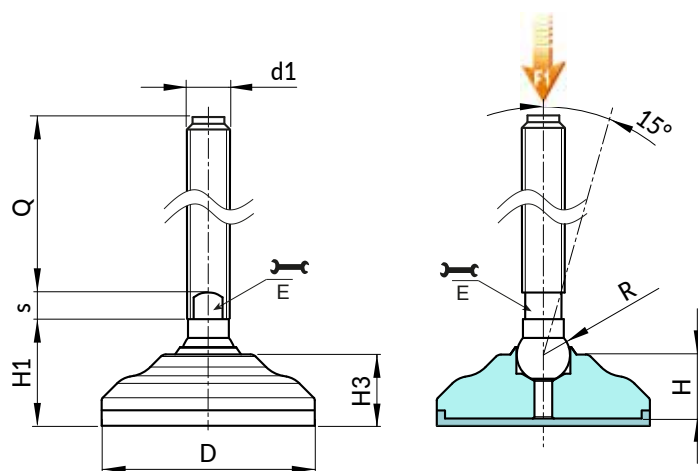
### Non-slip base:

Non-slip base in thermoplastic rubber SBS 75 Shore, black RAL 9011.

Resistant to oils and greases. Push-fit assembly.

### Special requests:

- Upon request and for special quantities inserts can be supplied with customised lengths.



### Version P543: Galvanised steel mounting foot with stem type B (with milled seat for wrench) and ball R15 - with SBS non-slip base

Art.	D	H	H1	H3	E	s	R	d1 <sub>6g</sub>	Q	g	F1 (kN)
P54340.VZM20X..	40	15	26	17.5	16	7	15	M20	90-110-130-150-170-190-210	313-345-377-412-444-477-512	50
P54350.VZM20X..	50	17.5	29.5	20	16	7	15	M20	90-110-130-150-170-190-210	382-414-446-481-513-546-581	50
P54360.VZM20X..	60	19.5	32	22	16	7	15	M20	90-110-130-150-170-190-210	487-519-351-586-618-651-686	50
P54340.VZM24X..	40	15	26	17.5	19	7	15	M24	90-110-130-150-170-190-210	437-497-557-617-677-737-797	50
P54350.VZM24X..	50	17.5	29.5	20	19	7	15	M24	90-110-130-150-170-190-210	506-566-626-686-746-806-866	50
P54360.VZM24X..	60	19.5	32	22	19	7	15	M24	90-110-130-150-170-190-210	611-671-731-791-851-911-971	50

### Version P543CIN: Stainless steel foot with stem type B (with milled seat for wrench) and ball R15 - with SBS non-slip base



Art.	D	H	H1	H3	E	s	R	d1 <sub>6g</sub>	Q	g	F1 (kN)
P54340.INM20X..CIN	40	15	26	17.5	16	7	15	M20	90-110-130-150-170-190-210	313-345-377-412-444-477-512	50
P54350.INM20X..CIN	50	17.5	29.5	20	16	7	15	M20	90-110-130-150-170-190-210	382-414-446-481-513-546-581	50
P54360.INM20X..CIN	60	19.5	32	22	16	7	15	M20	90-110-130-150-170-190-210	487-519-351-586-618-651-686	50
P54340.INM24X..CIN	40	15	26	17.5	19	7	15	M24	90-110-130-150-170-190-210	437-497-557-617-677-737-797	50
P54350.INM24X..CIN	50	17.5	29.5	20	19	7	15	M24	90-110-130-150-170-190-210	506-566-626-686-746-806-866	50
P54360.INM24X..CIN	60	19.5	32	22	19	7	15	M24	90-110-130-150-170-190-210	611-671-731-791-851-911-971	50

Enter the selected stud length in place of the two dots . . in the item code. Customised stud length available for a minimum of 100 pieces.

Attention: The expressed load limit F1 is lower than the break load by 30% and is intended as static.



# P544



## FULL STEEL MOUNTING FOOT WITH ARTICULATED STEM TYPE A - BALL R24 AND NON-SLIP BASE

### Materials:

#### P544:

Turned free-cutting steel mounting foot base.

#### P544CIN:

Turned stainless steel mounting foot base (Aisi 303).

### Surface finish:

Smooth.

### Colour:

#### P544:

Standard blue galvanising.

#### P544CIN:

Natural.

### Inserts:

#### P544:

Galvanised steel threaded and articulated stem (ball R.24) with hexagonal base (thread tolerance 6g).

#### P544CIN:

Stainless steel threaded and articulated stem (ball R.24) with hexagonal base (Aisi 303) (thread tolerance 6g).

### Stem fixing method:

The stem cannot be disassembled. The ball cannot be removed as the edge of its seat has been pressed in.

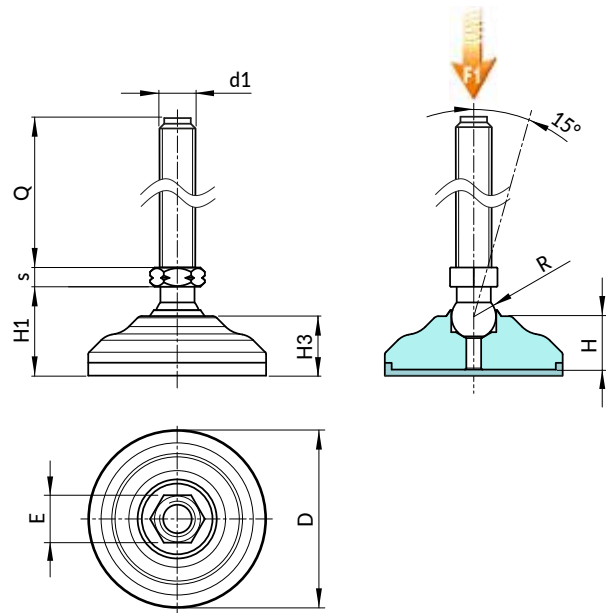
### Non-slip base:

Non-slip base in thermoplastic rubber SBS 75 Shore, black RAL 9011.

Resistant to oils and greases. Push-fit assembly.

### Special requests:

- Upon request and for special quantities inserts can be supplied with customised lengths.



### Version P544: Galvanised steel mounting foot with stem type A (with hexagonal base) and ball R24-with SBS non-slip base

Art.	D	H	H1	H3	E	s	R	d1 <sub>6g</sub>	Q	g	F1 (kN)
P54460.VZM16X..	60	19.5	44	22	24	7	24	M16	90-110-130-150-170	-	60
P54460.VZM20X..	60	19.5	44	22	24	7	24	M20	90-110-130-150-170	-	60

### Version P544CIN: Stainless steel mounting foot with stem type A (with hexagonal base) and ball R24-with SBS non-slip base

INOX

Art.	D	H	H1	H3	E	s	R	d1 <sub>6g</sub>	Q	g	F1 (kN)
P54460.INM16X..CIN	60	19.5	44	22	24	7	24	M16	90-110-130-150-170	-	60
P54460.INM20X..CIN	60	19.5	44	22	24	7	24	M20	90-110-130-150-170	-	60

# P580



C10



## GALVANISED STEEL MOUNTING FOOT WITH FIXED THREADED STUD

**Materials:**

Steel C10

**Surface finish:**

Smooth

**Colour:**

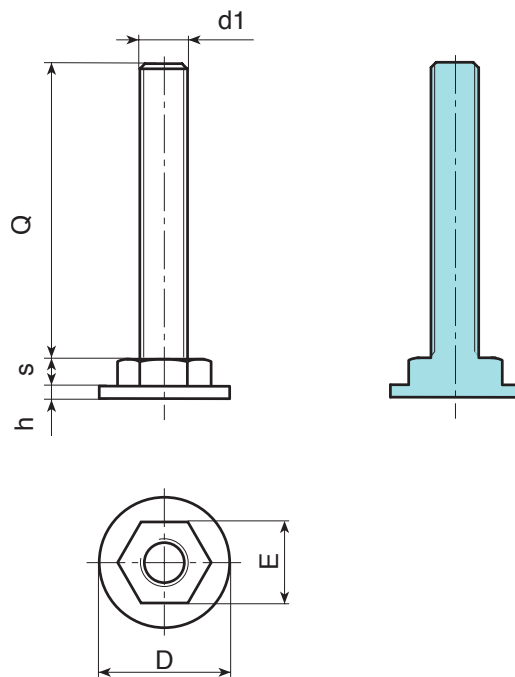
Standard blue galvanising.

**Inserts:**

Galvanised steel threaded stud (thread tolerance 6g).

**Special requests:**

- None.



Art.	D	h	E	s	d1 <sub>6g</sub>	Q	g	F1 (N)
P58031.VZM10X..	31	3	17	12	M10	40-50-60	59-71-83	13.000

Attention: The expressed load limit F1 is lower than the break load by 30% and is intended as static.

# PIE.40-50-60

## SMALL MOUNTING FOOT BASE (40-50-60)



PA6  
+G.F.

UL94  
HB

RoHS  
COMPLIANT

### Materials:

Reinforced polyamide. Resistant to oils and greases.

### Surface finish:

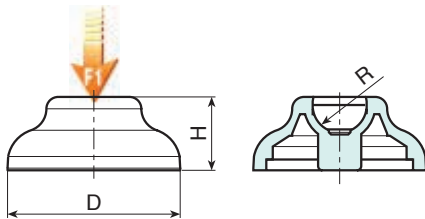
Satin.

### Colour:

Black (RAL 9011).

### Special requests:

- Upon request and for special quantities the foot can be supplied in Orange (RAL 2004).



Art.	D	H	R	g	F1 (N)
PIE.040S12.4	40	17	12.4	12	10000
PIE.040S15	40	17	15	12	10000
PIE.050S12.4	50	18	12.4	16	10000
PIE.050S15	50	18	15	16	10000
PIE.060S12.4	60	20	12.4	25	10000
PIE.060S15	60	20	15	24	15000
PIE.060S24	60	20	24	24	15000

# PIE. 80-105-130

## MOUNTING FOOT BASE WITH GROUND FIXING (80-105-130)



PA6  
+G.F.

UL94  
HB

RoHS  
COMPLIANT

### Materials:

Reinforced polyamide. Resistant to oils and greases.

### Surface finish:

Satin.

### Colour:

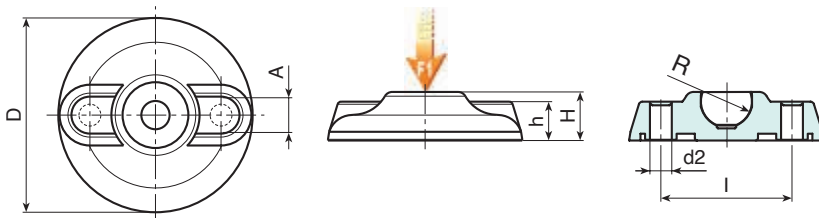
Black (RAL 9011).

### Ground fixing:

The mounting foot is supplied with closed holes for anchoring to the ground. To open them pierce the plastic membrane (see drawing).

### Special requests:

- Upon request and for special quantities the foot can be supplied in Orange (RAL 2004).



Art.	D	H	h	l	A	d2	R	g	F1 (kN)
PIE.080S12.4	80	20	20	54	16	9 (M8)	12.4	49	10
PIE.080S15	80	20	20	54	16	9 (M8)	15	45	13
PIE.080S24	80	20	20	54	16	9 (M8)	24	47.5	25
PIE.105S15	105	22	21	74	18.5	11 (M10)	15	99	15
PIE.105S24	105	22	21	74	18.5	11 (M10)	24	97	25
PIE.130S15	130	24	21	99	20	13 (M12)	15	165	17
PIE.130S24	130	24	21	99	20	13 (M12)	24	163	25



Stock availability as % (🛒)  
90% (●) - 40% (●) - 5% (●)

# PIE.700080



## TEARDROP MOUNTING FOOT BASE WITH LATERAL GROUND FIXING

### Materials:

Reinforced polyamide.  
Resistant to oils and greases.

### Surface finish:

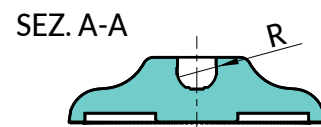
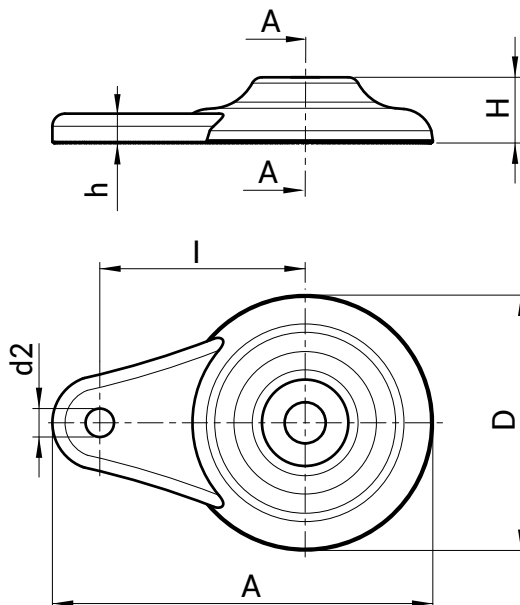
Satin.

### Colour:

Black (RAL 9011).

### Special requests:

- Upon request and for special quantities the foot can be supplied in Orange (RAL 2004).



🛒	Art.	D	H	h	A	d2	l	R	g	F1 (N)
●	PIE.700080S125	80	20	9	120	9	65	12,4	58	10.000
●	PIE.700080S15	80	20	9	120	9	65	15	57	13.000
●	PIE.700080S24	80	20	9	120	9	65	24	56	25.000

# PIEANT



## NON-SLIP BASE FOR MOUNTING FOOT BASE (40-50-60-80-105-130)

### Materials:

Thermoplastic rubber SBS 75 Shore (only in black RAL 9011).  
Resistant to oils and greases.

### Surface finish:

Smooth.

### Colour:

Black (RAL 9011).

### Assembly:

Push-fit.

### Special requests:

- On request the non-slip base can be glued on.



	Art.	FOR FOOT BASE	g
●	PIE.ANT40S12.5SBS	PIE.040S12.4	5
●	PIE.ANT50S12.5SBS	PIE.050S12.4	6.5
●	PIE.ANT60S12.5SBS	PIE.060S12.4 - PIE.060S15	10
●	PIE.ANT80S1215SBS	PIE.080S12,4 - PIE.080S15	17
●	PIE.ANT105S15SBS	PIE.105S15	33
●	PIE.ANT105S24SBS	PIE.105S24	69
●	PIE.ANT130S15SBS	PIE.130S15	74
●	PIE.ANT130S24SBS	PIE.130S24	112

P

# PIE.ANT700



## NON-SLIP BASE FOR TEARDROP MOUNTING FOOT BASE WITH LATERAL FIXING

### Materials:

Thermoplastic rubber SBS 75 Shore (only in black RAL 9011).  
Resistant to oils and greases.

### Surface finish:

Smooth.

### Colour:

Black (RAL 9011).

### Assembly:

Push-fit, with glue.

### Special requests:

- None.



Art.	FOR FOOT BASE	g
PIE.ANT700080S121524SBS	PIE.700080S125 - PIE.700080S15 - PIE.700080S24	23



# PEPFZE13-R12,4



C10



## GALVANISED STEEL THREADED STEM TYPE A - WITH JOINT R12.4 AND HEXAGONAL BASE 13 - OBTAINED BY COLD MOULDING

### Materials:

Steel with strength class 4.8.

### Surface finish:

Smooth.

### Colour:

Blue galvanising.

### Thread:

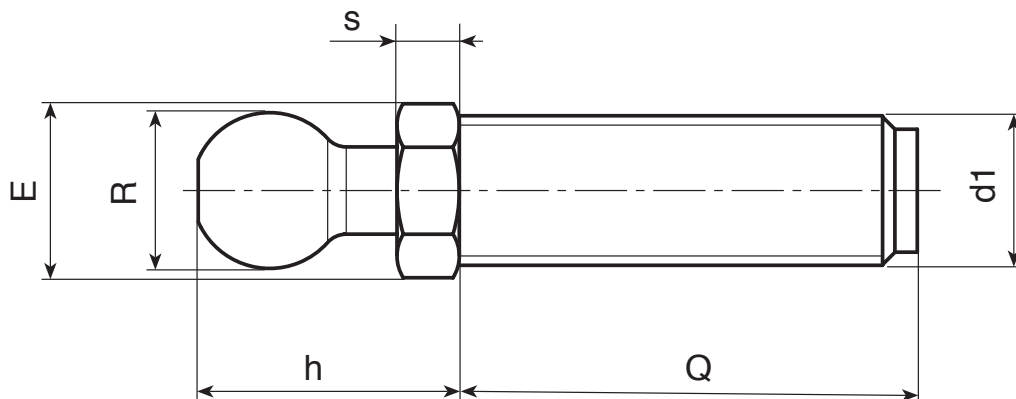
Moulded stem with hexagonal base (type A) with rolled thread (thread tolerance 6g).

### Special requests:

- Upon request and for a minimum quantity of 30,000 pieces, inserts can be supplied with length to customer's drawing.

### Compatibility with bases:

These stems are compatible with the following foot bases:  
PIE.040S12,4 • PIE.050S12,4 • PIE.060S12,4 • PIE.080S12,4 • PIE.700080S12,8



Art.	E	s	h	R	d1 <sub>6g</sub>	Q	g
PEP.FZE13X5M08X45	13	5	20	12.4	M8	45	29
PEP.FZE13X5M08X70	13	5	20	12.4	M8	70	36
PEP.FZE13X5M10X45	13	5	20	12.4	M10	45	37
PEP.FZE13X5M10X70	13	5	20	12.4	M10	70	49
PEP.FZE13X5M10X100	13	5	20	12.4	M10	100	85
PEP.FZE13X5M12X45	13	5	20	12.4	M12	45	46
PEP.FZE13X5M12X70	13	5	20	12.4	M12	70	65
PEP.FZE13X5M12X100	13	5	20	12.4	M12	100	85



# PEPVZE13-PEPINE13



## STEEL THREADED STEM TYPE A - WITH JOINT R12.4 AND HEXAGONAL BASE 13 - TURNED

### Materials:

#### PEP.VZE13:

Free-cutting steel (39SMnPb36).

#### PEP.INE13:

Stainless steel (Aisi 303).

### Surface finish:

Smooth.

### Colour:

#### PEP.VZE16:

Blue galvanising.

#### PEP.INE16:

Natural.

### Stem:

Turned stem with hexagonal base (type A) with rolled thread (thread tolerance 6g).

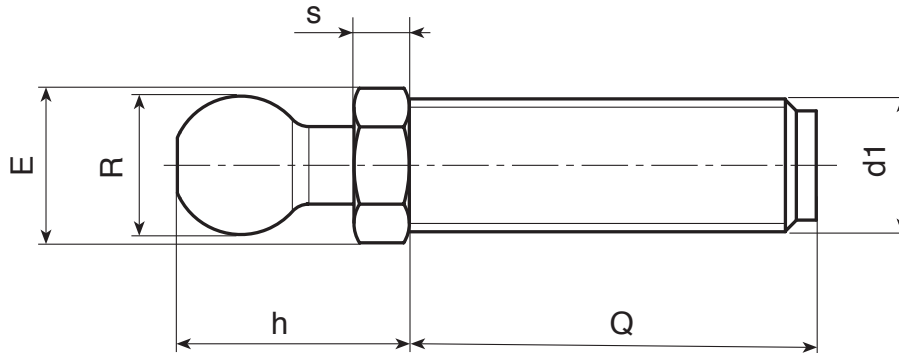
### Special requests:

- Upon request and for special quantities the length and geometry of the inserts can be supplied to customer's drawing.

### Compatibility with bases:

These stems are compatible with the following foot bases:

PIE.040S12,4 • PIE.050S12,4 • PIE.060S12,4 • PIE.080S12,4 • PIE.700080S12,8



### Version PEP.VZE: galvanised steel

🛒	Art.	E	s	h	R	d1 <sub>6g</sub>	Q	Q Max	📦
-	PEP.VZE13X5M08X..	13	5	20	12.4	M8	A.R.	110	-
-	PEP.VZE13X5M10X..	13	5	20	12.4	M10	A.R.	110	-
-	PEP.VZE13X5M12X..	13	5	20	12.4	M12	A.R.	110	-

### Version PEP.INE: stainless steel (Aisi 303)

🛒	Art.	E	s	h	R	d1 <sub>6g</sub>	Q	Q Max	📦
-	PEP.INE13X5M08X..	13	5	20	12.4	M8	45-70	70	29-36
-	PEP.INE13X5M10X..	13	5	20	12.4	M10	45-70	70	37-70
-	PEP.INE13X5M12X..	13	5	20	12.4	M12	45-70-100	100	46-65-85



Enter the selected stud length in place of the two dots . . in the item code.

A.R. = Customised stud length available for a minimum of 100 pieces.





# PEPVZE16-PEPINE16



## STEEL THREADED STEM TYPE A - WITH JOINT R15 AND HEXAGONAL BASE 16 - TURNED

### Materials:

**PEP.VZE16:**

Free-cutting steel (39SMnPb36).

**PEP.INE16:**

Stainless steel (Aisi 303).

### Surface finish:

Smooth.

### Colour:

**PEP.VZE16:**

Blue galvanising.

**PEP.INE16:**

Natural.

### Stem:

Turned stem with hexagonal base (type A) with rolled thread (thread tolerance 6g).

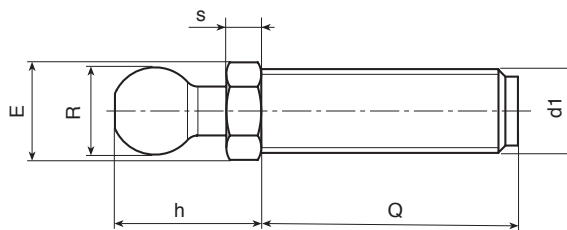
### Special requests:

- Upon request and for special quantities the length and geometry of the inserts can be supplied to customer's drawing.

### Compatibility with bases:

These stems are compatible with the following foot bases:

PIE.060S15 • PIE.080S15 • PIE.105S15 • PIE.130S15 • PIE.700080S19



### Version PEP.VZE: galvanised steel

Art.	E	s	h	R	d1 <sub>6g</sub>	Q	
PEP.VZE16X6M12X..	16	6	23	15	M12	50-70-90-110	63-76-91-107
PEP.VZE16X6M14X..	16	6	23	15	M14	50-70-90-110-150	75-95-116-133-167
PEP.VZE16X6M16X..	16	6	23	15	M16	50-70-90-110-130-150-170-190	91-117-143-168-194-219-247-270

### Version PEP.INE: stainless steel (Aisi 303)

Art.	E	s	h	R	d1 <sub>6g</sub>	Q	
PEP.INE16X6M12X..	16	6	23	15	M12	70-90-110	76-91-116
PEP.INE16X6M14X..	16	6	23	15	M14	70-110-130	95-133-150
PEP.INE16X6M16X..	16	6	23	15	M16	50-70-90-110-130-150-170-190	91-117-143-168-194-219-247-275



Enter the selected stud length in place of the two dots . . in the item code.

Customised stud length available for a minimum of 100 pieces.



Stock availability as % ()  
90% (●) - 40% (●) - 5% (●)

# PEPVZTM



## GALVANISED STEEL THREADED STEM TYPE B - WITH MILLED SEAT FOR WRENCH - TURNED

### Materials:

Free-cutting steel (39SMnPb36).

### Surface finish:

Smooth.

### Colour:

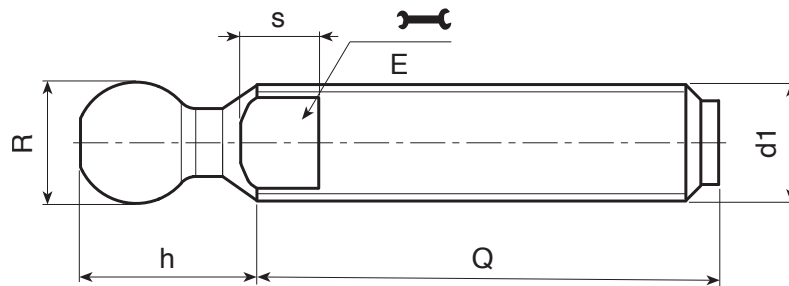
Blue galvanising.

### Thread:

Turned stem with milled seat for wrench (type B) with rolled thread (thread tolerance 6g).

### Special requests:

- Upon request and for special quantities the length and geometry of the inserts can be supplied to customer's drawing.



### Version M16 with ball R. 12.4

Art.	E	s	R	d1 <sub>6g</sub>	Q	
PEPVZTM16X..Z3	13	7	12.4	M16	50-70-90-110-130-150-170	72-98-124-150-176-202-228

These stems are compatible with the following foot bases: • PIE.040S12,4 • PIE.050S12,4 • PIE.060S12,4 • PIE.080S12,4 • PIE.700080S125

Enter the selected stud length in place of the two dots .. in the item code. Customised stud length available for a minimum of 100 pieces.

### Version M20-M24 with ball R. 15

Art.	E	s	R	d1 <sub>6g</sub>	Q	
PEPVZTM20X..Z3	16	7	15	M20	50-70-90-110-130-150-170-190-210	142-174-206-238-270-305-337-370-405
PEPVZTM24X..Z3	19	7	15	M24	70-90-110-130-150-170-190-210	270-330-390-450-510-570-630-690

These stems are compatible with the following foot bases: • PIE.060S15 • PIE.080S15 • PIE.105S15 • PIE.130S15 • PIE.700080S15

Enter the selected stud length in place of the two dots .. in the item code. Customised stud length available for a minimum of 100 pieces.

### Version M24-M30 with ball R. 24

Art.	E	s	R	d1 <sub>6g</sub>	Q	
PEPVZTM24X..Z5	19	10	24	M24	70-90-110-130-150-170	270-330-390-450-510-570
PEPVZTM30X..Z5	27	12	24	M30	90-110-130-150-170-190-210	461-550-637-725-813-900-990

These stems are compatible with the following foot bases: • PIE.080S24 • PIE.105S24 • PIE.130S24 • PIE.700080S24

Enter the selected stud length in place of the two dots .. in the item code. Customised stud length available for a minimum of 100 pieces.



Stock availability as % ()  
90% (●) - 40% (●) - 5% (●)

# PEPINTM



## STAINLESS STEEL THREADED STEM TYPE B - WITH MILLED SEAT FOR WRENCH - TURNED

INOX

### Materials:

Stainless steel:

M16 R.12.4 - M20 R.15 - M24 R.24:

Aisi 303

M24 R.15 - M24 R.24:

Aisi 304

### Surface finish:

Smooth.

### Colour:

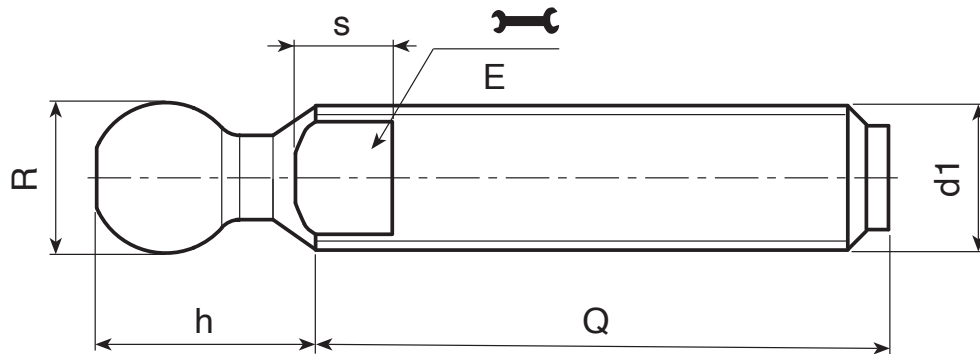
Natural.

### Thread:

Turned stem with milled seat for wrench (type B) with rolled thread (thread tolerance 6g).

### Special requests:

- Upon request and for special quantities the length and geometry of the inserts can be supplied to customer's drawing.



INOX

### Version M16 with ball R. 12.4

Art.	E	s	R	d1 <sub>6g</sub>	Q	g
PEP.INTM16X..Z3	13	7	12.4	M16	110-130-150-170	150-176-202-228

These stems are compatible with the following foot bases: • PIE.040S12,4 • PIE.050S12,4 • PIE.060S12,4 • PIE.080S12,4 • PIE.700080S125  
Enter the selected stud length in place of the two dots . . in the item code. Customised stud length available for a minimum of 100 pieces.

INOX

### Version M20-M24 with ball R. 15

Art.	E	s	R	d1 <sub>6g</sub>	Q	g
PEP.HNTM20X..Z3	16	7	15	M20	70-90-130-150-190-210	174-206-270-305-370-405
PEP.HNTM24X..Z3	19	7	15	M24	110-150-190	390-510-630

These stems are compatible with the following foot bases: • PIE.060S15 • PIE.080S15 • PIE.105S15 • PIE.130S15 • PIE.700080S15  
Customised stud length available for a minimum of 100 pieces.

INOX

### Version M24-M30 with ball R. 24

Art.	E	s	R	d1 <sub>6g</sub>	Q	g
PEP.INTM24X..Z5	19	10	24	M24	110-130-150-190	390-450-510-630
PEP.HNTM30X..Z5	27	12	24	M30	130-170-210	637-813-990

These stems are compatible with the following foot bases: • PIE.080S24 • PIE.105S24 • PIE.130S24 • PIE.700080S24  
Customised stud length available for a minimum of 100 pieces.



## STEEL THREADED STEM - LONG SERIES - WITH HEXAGONAL BASE - TURNED

### Materials:

PEP.VZE:

Free-cutting steel (39SMnPb36).

PEP.INE:

Stainless steel (Aisi 303).

### Surface finish:

Smooth.

Blue galvanising.

PEP.INE:

Natural.

### Colour:

PEP.VZE:

Blue galvanising.

PEP.INE:

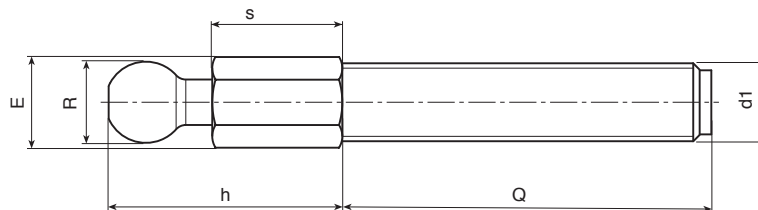
Natural.

### Thread:

Turned stem with hexagonal base (type A) with rolled thread (thread tolerance 6g).

### Special requests:

- Upon request and for special quantities the length and geometry of the inserts can be supplied to customer's drawing.



### Version with hexagonal base 13 - ball R. 12.4 - Galvanised steel

🛒	Art.	E	s	h	R	d1 <sub>6g</sub>	Q	Q <>	g
●	PEP.VZE13X20M08X..	13	20	35	12.4	M8	A.R.	60 ÷ 300	-
●	PEP.VZE13X20M10X..	13	20	35	12.4	M10	A.R.	80 ÷ 300	-
●	PEP.VZE13X20M12X..	13	20	35	12.4	M12	A.R.	100 ÷ 300	-

Enter the selected stud length in place of the two dots . . in the item code. Customised stud length available for a minimum of 100 pieces.

These stems are compatible with the following foot bases: • PIE.040S12,4 • PIE.050S12,4 • PIE.060S12,4 • PIE.080S12,4 • PIE.700080S125

INOX

### Version with hexagonal base 13 - ball R. 12.4 - Stainless steel (Aisi 303)

🛒	Art.	E	s	h	R	d1 <sub>6g</sub>	Q	Q <>	g
●	PEP.INE13X20M08X..	13	20	35	12.4	M8	A.R.	50 ÷ 300	-
●	PEP.INE13X20M10X..	13	20	35	12.4	M10	A.R.	70 ÷ 300	-
●	PEP.INE13X20M12X..	13	20	35	12.4	M12	A.R.	100 ÷ 300	-

Enter the selected stud length in place of the two dots . . in the item code. Customised stud length available for a minimum of 100 pieces.

These stems are compatible with the following foot bases: • PIE.040S12,4 • PIE.050S12,4 • PIE.060S12,4 • PIE.080S12,4 • PIE.700080S125

INOX

### Version with hexagonal base 13 - ball R. 12.4 - Galvanised steel

🛒	Art.	E	s	h	R	d1 <sub>6g</sub>	Q	Q <>	g
●	PEP.VZE16X20M12X..	16	20	37	15	M12	A.R.	135 ÷ 300	-
●	PEP.VZE16X20M14X..	16	20	37	15	M14	A.R.	135 ÷ 300	-
●	PEP.VZE16X20M16X..	16	20	37	15	M16	A.R.	195 ÷ 300	-

Enter the selected stud length in place of the two dots . . in the item code. Customised stud length available for a minimum of 100 pieces.

These stems are compatible with the following foot bases: • PIE.040S12,4 • PIE.050S12,4 • PIE.060S12,4 • PIE.080S12,4 • PIE.700080S125

INOX

### Version with hexagonal base 16 - ball R. 15 - Stainless steel (Aisi 303)

🛒	Art.	E	s	h	R	d1 <sub>6g</sub>	Q	Q <>	**non tradotto**
●	PEP.INE16X20M12X..	16	20	37	15	M12	A.R.	95 ÷ 300	-
●	PEP.INE16X20M14X..	16	20	37	15	M14	A.R.	135 ÷ 300	-
●	PEP.INE16X20M16X..	16	20	37	15	M16	A.R.	175 ÷ 300	-

Enter the selected stud length in place of the two dots . . in the item code. Customised stud length available for a minimum of 100 pieces.

These stems are compatible with the following foot bases: • PIE.060S15 • PIE.080S15 • PIE.105S15 • PIE.130S15 • PIE.700080S15