



**BOTECO®**

**YOUR MECHANICAL COMPONENT**

## GROUP - Q

### WASHERS





SOME CHOICE  
TAKE US TO  
THE HIGHEST  
**PEAKS.**



**BOTECO**<sup>®</sup>

# Q260

## KNURLED WASHER



PF

UL94  
HB



**Materials:**

Phenolic resin.  
Resistant to oils and greases.  
Resistant to high temperatures.

**Surface:**

Glossy.

**Colour:**

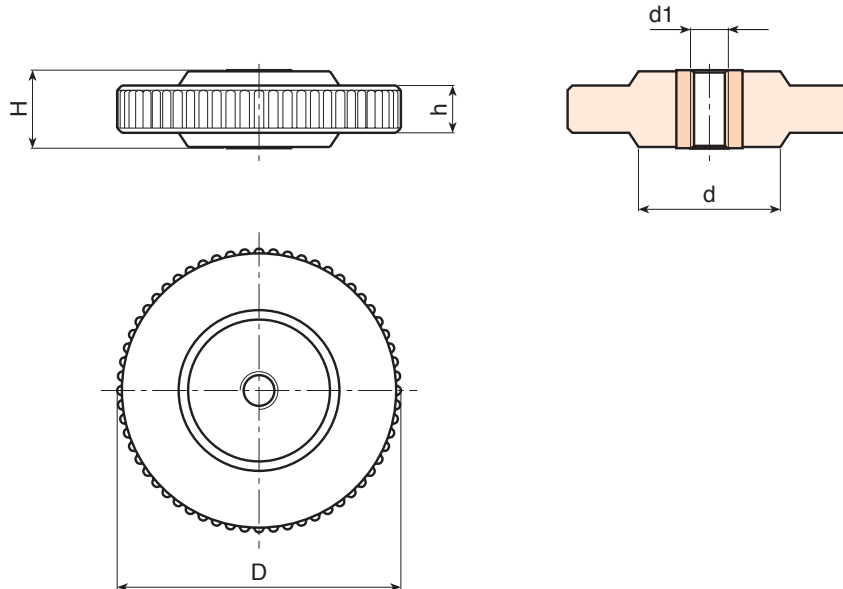
Black (RAL 9011).

**Inserts:**

Galvanised steel insert with threaded through hole (thread tolerance 6H).

**Special Requests:**

- Upon request and for special quantities inserts can be supplied in different materials.



	art.	D	H	d	h	d1 <sub>6H</sub>	g
●	Q26045.BM0601P	47	10	-	-	M6	31
●	Q26045.BM0801P	47	10	-	-	M8	32
●	Q26045.BM1001P	47	10	-	-	M10	34
●	Q26045.BM1201P	47	10	-	-	M12	35
●	Q26045.BM1401P	47	10	-	-	M14	38
●	Q26045.BM1601P	47	10	-	-	M16	42
●	Q26060.BM0801P	60	16	30	11	M8	62
●	Q26060.BM1001P	60	16	30	11	M10	65
●	Q26060.BM1201P	60	16	30	11	M12	68
●	Q26060.BM1401P	60	16	30	11	M14	70
●	Q26060.BM1601P	60	16	30	11	M16	73

# Q261

## LOBED WASHER



### Materials:

Reinforced polyamide.  
Resistant to oils and greases.

### Surface:

Satin.

### Colour:

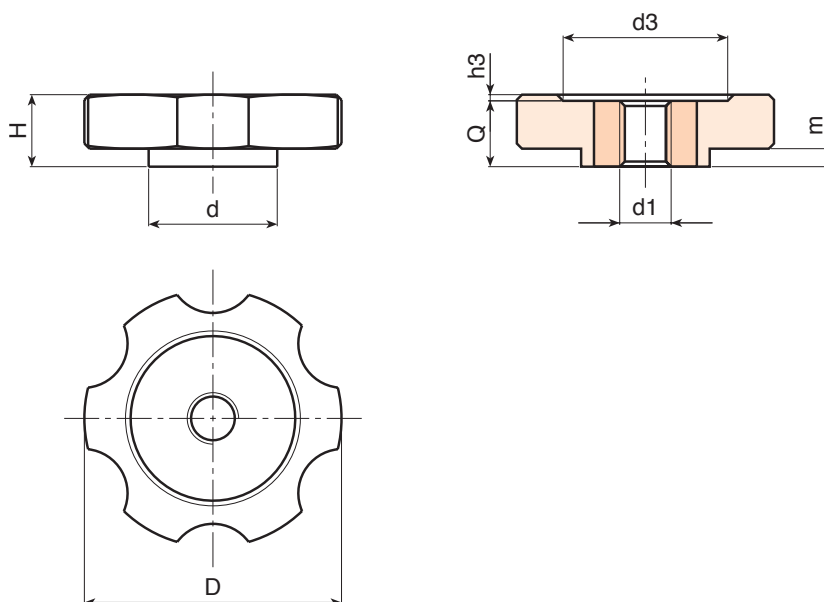
Black (RAL 9011).

### Inserts:

Galvanised steel insert with threaded through hole (thread tolerance 6H).

### Special Requests:

- Upon request and for special quantities inserts can be supplied in different materials.
- Upon request and for special quantities available in the colours indicated in the chart [page 807].



	art.	D	H	d	m	h3	d3	d1 <sub>6H</sub>	Q	
●	Q26140.TM0801P	40	12	25	2	1.5	22	M8	11	21
●	Q26140.TM1001P	40	12	25	2	1.5	22	M10	11	22
●	Q26140.TM1201P	40	12	25	2	1.5	22	M12	11	24
●	Q26150.TM0801P	50	14	25	3.5	1.5	32	M8	13	31
●	Q26150.TM1001P	50	14	25	3.5	1.5	32	M10	13	32
●	Q26150.TM1201P	50	14	25	3.5	1.5	32	M12	13	35

# Q262

## KNURLED WASHER



**Materials:**

Reinforced polyamide.  
Resistant to oils and greases.

**Surface:**

Satin.

**Colour:**

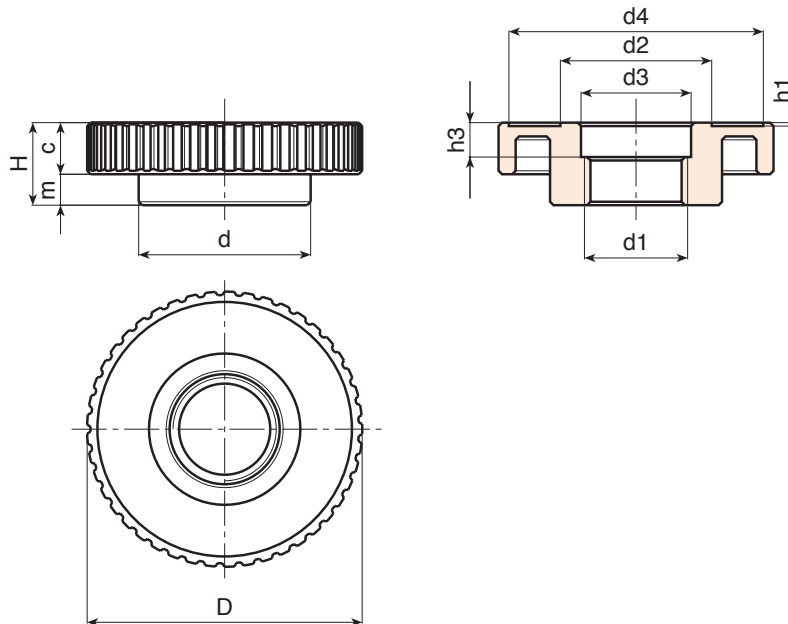
Black (RAL 9011).

**Hole:**

Threaded through hole obtained by moulding the plastic (tolerance not applicable).

**Special Requests:**

- Upon request and for special quantities hole d1 can be supplied to customer's drawing.



	art.	D	H	d	c	m	h1	h3	d2	d3	d4	d1	
●	Q26280.TB3001P	81	24	50	14.5	9.5	1	10	43.5	32	74	M30x1,5	65

# Q263

## KNURLED WASHER

+135°  
-30°

PA6  
+G.F.

UL94  
HB

RoHS  
COMPLIANT

### Materials:

Reinforced polyamide.  
Resistant to oils and greases.

### Surface:

Satin.

### Colour:

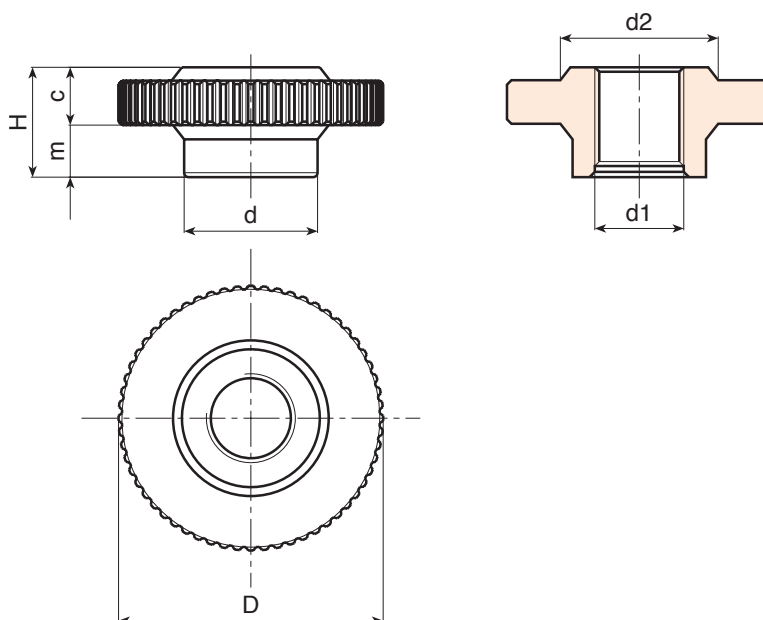
Black (RAL 9011).

### Hole:

Threaded through hole obtained by moulding the plastic  
(tolerance not applicable).

### Special Requests:

- Upon request and for special quantities hole d1 can be supplied to customer's drawing.



	art.	D	H	d	c	m	d2	d1	g
●	Q26360.TM2001P	60	25	30	12	13	35	M20	38
●	Q26360.TM2401P	60	25	30	12	13	35	M24	35

# Q264

## 6-LOBE WASHER



### Materials:

Reinforced polyamide.  
Resistant to oils and greases.

### Surface:

Satin.

### Colour:

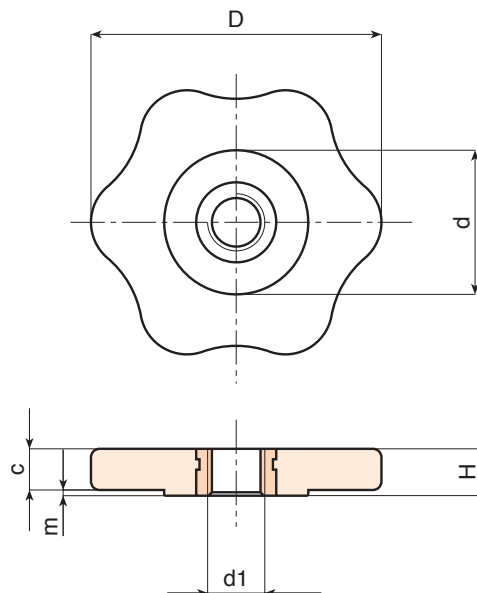
Black (RAL 9011).

### Inserts:

Brass insert with threaded through hole (thread tolerance 6H).

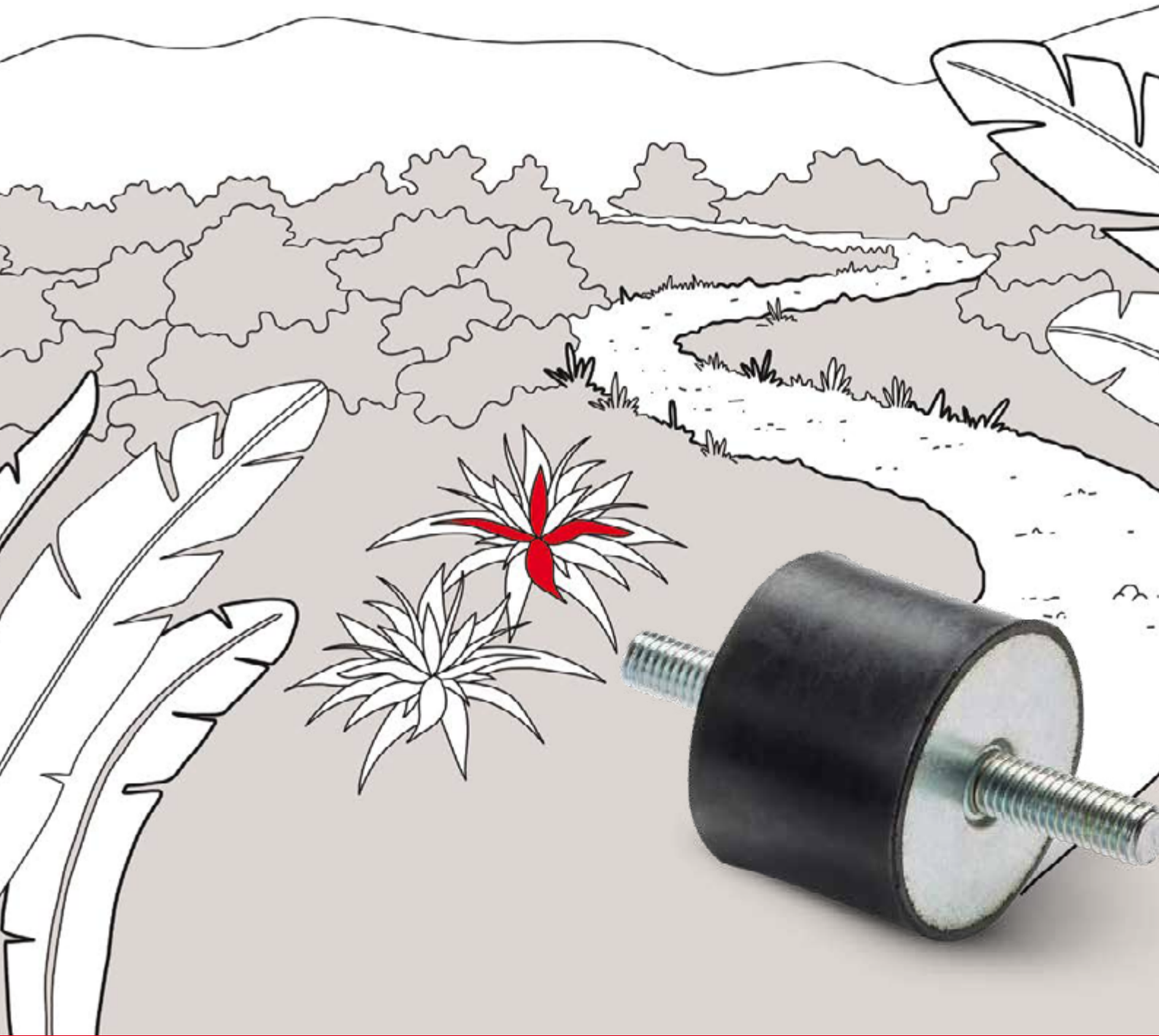
### Special Requests:

- Upon request and for special quantities inserts can be supplied in different materials.
- Upon request and for special quantities available in the colours indicated in the chart [page 807].



	art.	D	H	d	c	m	d1 <sub>6H</sub>	
●	Q26450.TM0601P	50	8	25	7	1	M6	18
●	Q26450.TM0801P	50	8	25	7	1	M8	18
●	Q26450.TM1001P	50	8	25	7	1	M10	20





**FLEXIBILITY** contributes  
to paving the way to success.



**BOTECA**<sup>®</sup>