



**BOTECO®**

**YOUR MECHANICAL COMPONENT**

## GROUP - R

### ACCESSORIES FOR MACHINE TOOLS





**SOLID BASIS**  
FOR YOUR PROJECTS.

---

[www.boteco.com](http://www.boteco.com)



**BOTECO**<sup>®</sup>  
YOUR MECHANICAL COMPONENT

# R551

## PLANE GUARD (Boomerang)



**Materials:**

Impact resistant polystyrene.

**Surface finish:**

Satin.

**Colour:**

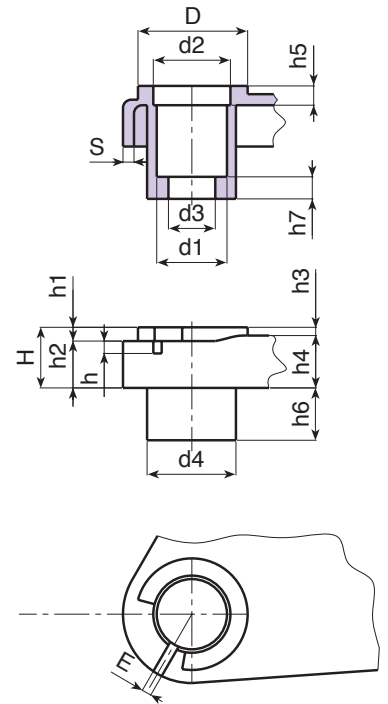
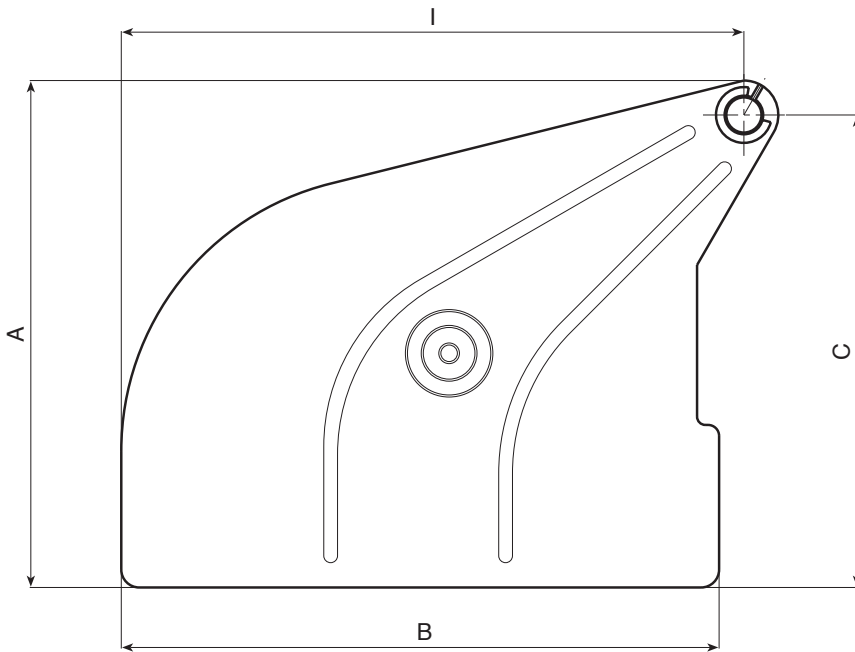
Orange (RAL 2004).

**Hole:**

Smooth through hole obtained by moulding the plastic.

**Special requests:**

- None.



Art.	A	B	C	I	D	E	S	H	h	h1	h2	h3	h4	h5	h6	h7	d1	d2	d3	d4	g
● R551300.P02	265	314	235	340	41	3	2.5	23	7	4	19	4	19	11	18	8.5	25	28	16.5	30.5	310
● R551315.P02	265	314	235	340	41	3	2.5	23	7	4	19	4	19	11	-	-	25	28	-	-	385
● R551395.P02	280	356	253	372	41	3	2.5	23	4.5	5	18	4	19.5	8	18	9	25	28	16.5	30.5	375
● R551355.P02	280	356	253	372	41	3	2.5	23	4.5	5	18	4	19.5	8	-	-	25	28	-	-	365
● R551450.P02	370	436	344	452	41	3	2.5	22	4.5	5	17	3	19	7	-	-	25	28	-	-	660

# R809

## BAR STOP

+135°  
-30°

PA6  
+G.F.

UL94  
HB

RoHS  
COMPLIANT

### Materials:

Reinforced polyamide.  
Resistant to oils and greases.

### Surface finish:

Satin.

### Colour:

Black (RAL 9011).

### Hole:

Smooth through hole obtained by moulding the plastic.

### Inserts:

(1) Galvanised steel nut with threaded through hole DIN 934 / UNI 5588

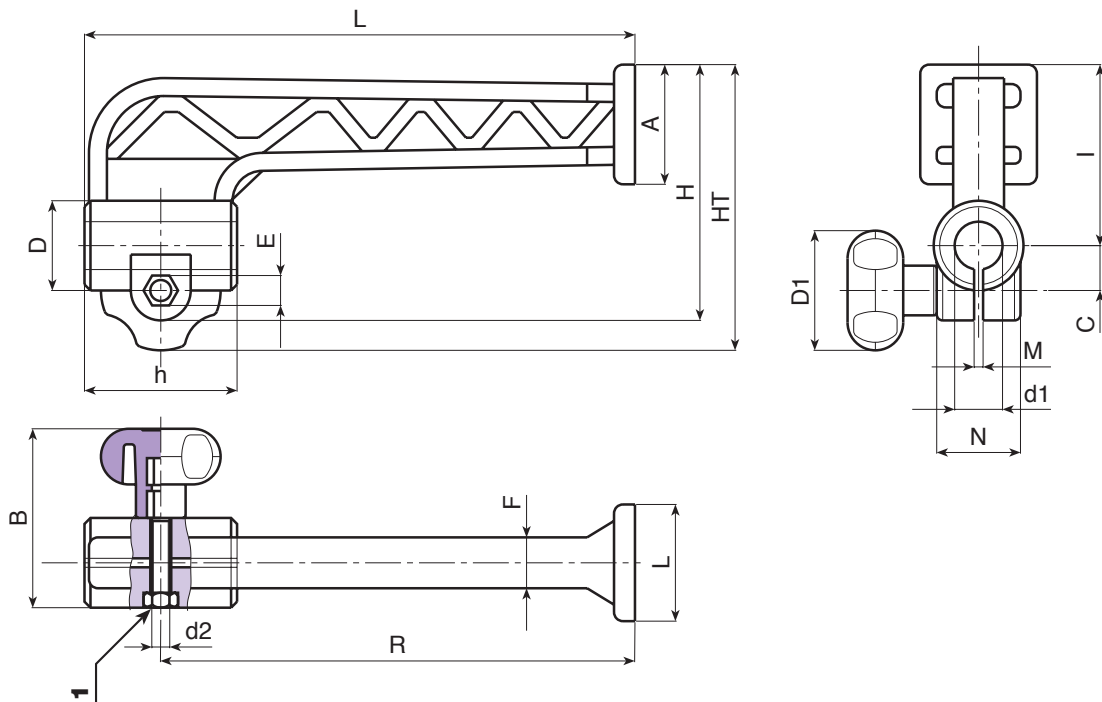
### Locking handwheel:

R809130: art. G73230.TM06X25.

R809158: art. G73240.TM06X30.

### Special requests:

- None.



Art.	R	L	H	HT	D	D1	A	B	C	E	F	G	I	M	N	h	d1	d2	g
R809130.TD1201	132	150	85	90	25	30	25	46	12	10	14	24	63	2.5	23	37	12	M6	72
R809130.TD1301	132	150	85	90	25	30	25	46	12	10	14	24	63	2.5	23	37	13	M6	70
R809130.TD1601	132	150	85	90	25	30	25	46	12	10	14	24	63	2.5	23	37	16	M6	67
R809158.TD1601	158	185	95	105	29	40	39	57	15	10	17	38	70	2.5	27	50	16	M6	130
R809158.TD2001	158	185	95	105	29	40	39	57	15	10	17	38	70	2.5	27	50	16	M6	123

# R530

## LARGE 4 WAY TERMINAL BLOCK



**Materials:**

Impact resistant, self-extinguishing Polystyrene.

**Surface finish:**

Smooth.

**Colour:**

Black (RAL 9011).

**Inserts:**

Brass insert with threaded through hole.

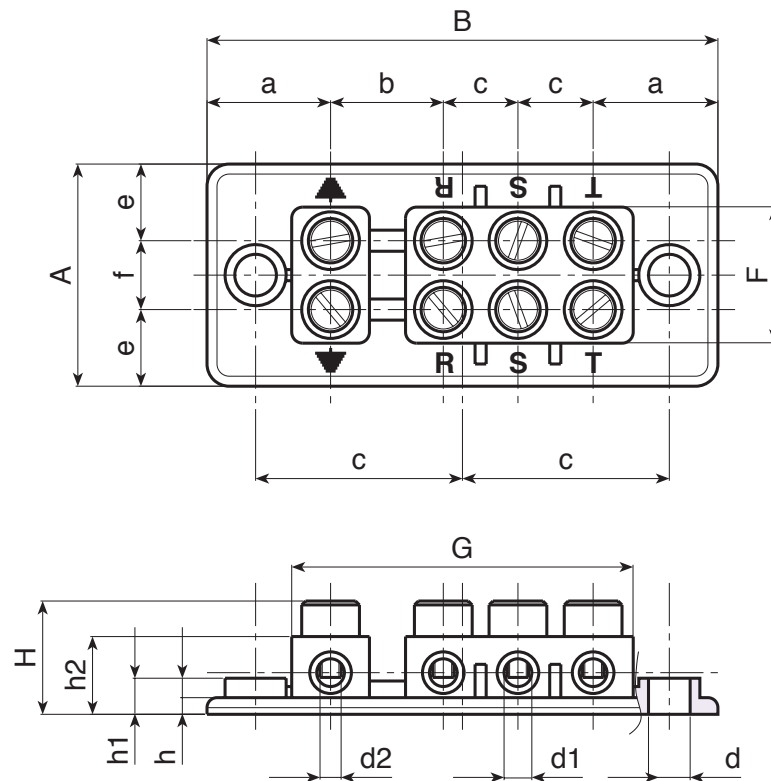
Galvanised steel screw M4x10 DIN 84.

**Special requests:**

- None.

**Compatible accessories:**

Terminal block cover article R531 [page 548].



Art.	A	B	H	F	G	a	b	c	e	f	g	h	h1	h2	d	d1	d2	g
R53091.P01	40	92	20	25	61	22	20	13.5	14	12.5	70	3	6.5	15	7	5	M4	70

# R531

## TERMINAL BLOCK COVER FOR TERMINAL R530



**Materials:**

Impact resistant, self-extinguishing Polystyrene.

**Surface finish:**

Smooth.

**Colour:**

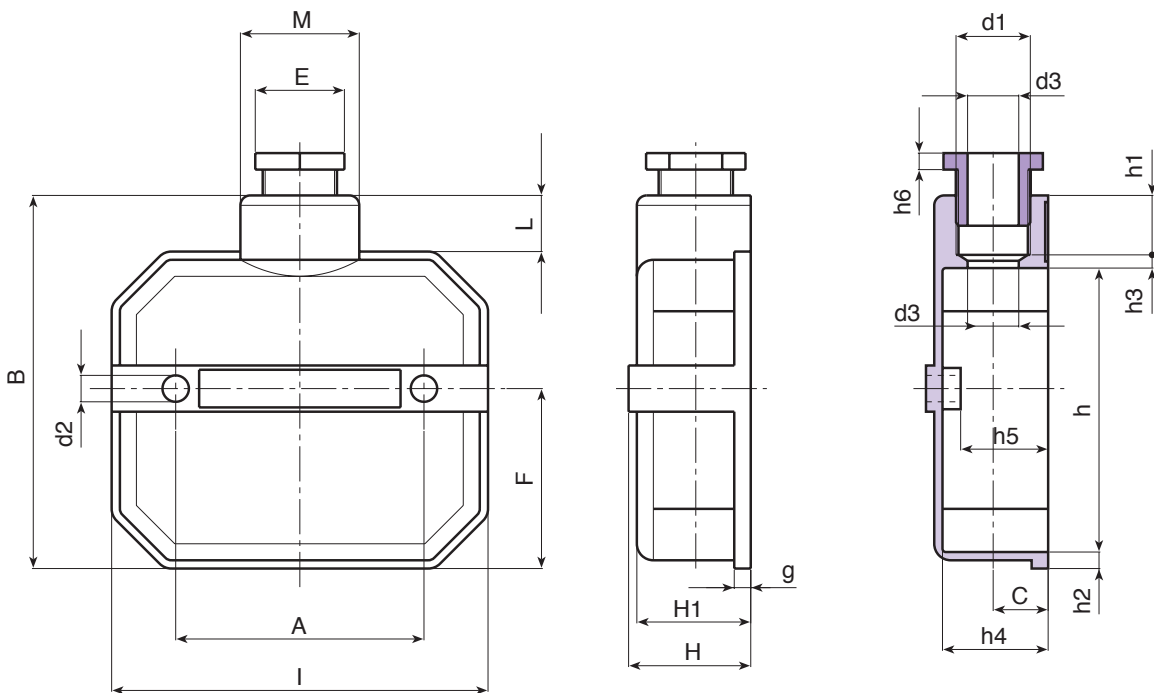
Black (RAL 9011).

**Special requests:**

- None.

**Compatible accessories:**

4 way terminal block article R530 [page 547].



Art.	A	B	H	I	C	E	F	L	M	H1	d1	d2	d3	h	h1	h2	h3	h4	h5	h6	h7	
R531114PG16.P01	114	114	37	75.5	16.5	27	54.5	17	35.5	35	PG16	8	15.5	86	4	5	18	31	25.5	5	4.5	77

# R534

## 5 WAY TERMINAL BLOCK



PS

UL94  
V0

RoHS  
COMPLIANT

### Materials:

Impact resistant, self-extinguishing Polystyrene.

### Surface finish:

Smooth.

### Colour:

Black (RAL 9011).

### Inserts:

Brass insert with threaded through hole.

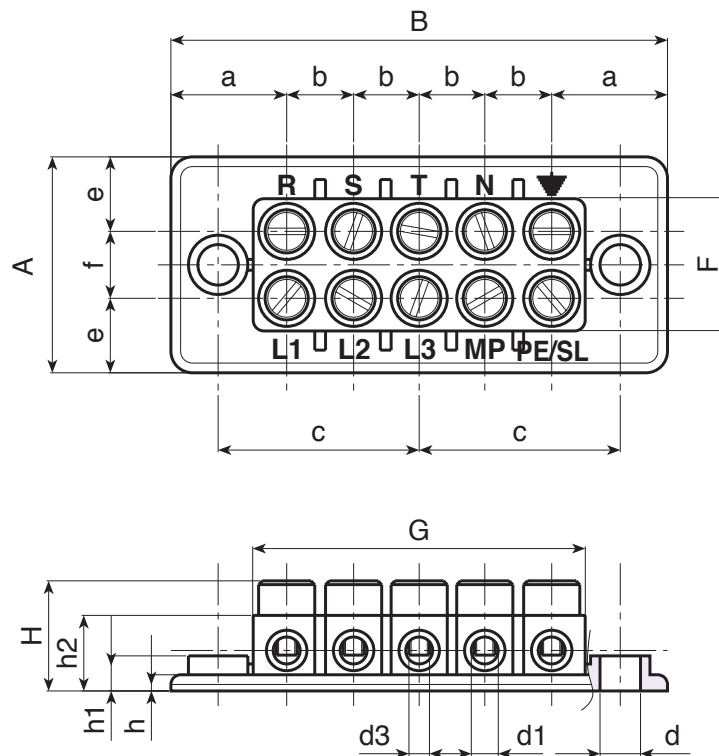
Galvanised steel screw M4x10 DIN 84.

### Special requests:

- None.

### Compatible accessories:

Terminal block cover article R535 [page 550].



Art.	A	B	H	F	G	a	b	c	e	f	h	h1	h2	d	d1	d2	g
R534.P01	40	92	20	25	61	21.5	12.5	37	14	12.5	3	7	15	7	5	M4	83

# R535



## TERMINAL BLOCK COVER WITH MOUNTING PLATE AND GASKET AND CABLE ENTRY PG16

### Materials:

(1-2-4) Impact resistant, self-extinguishing Polystyrene.  
 (3-5) Thermoplastic rubber 75 shore.

### Surface finish:

Smooth.

### Colour:

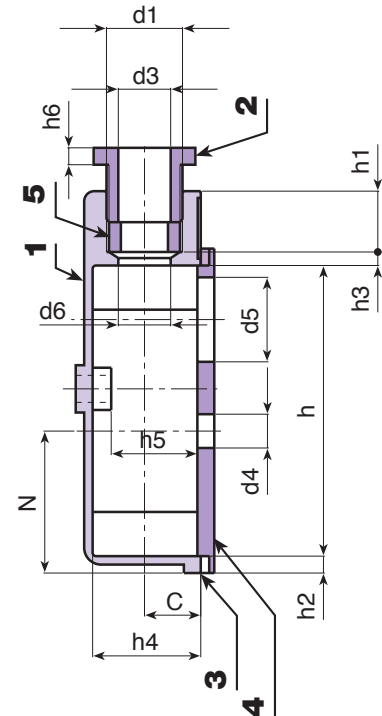
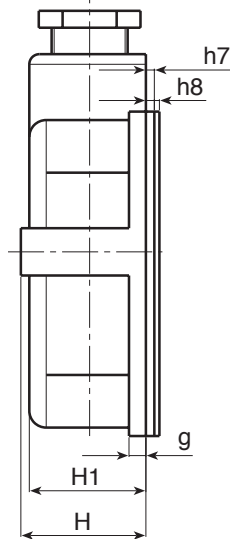
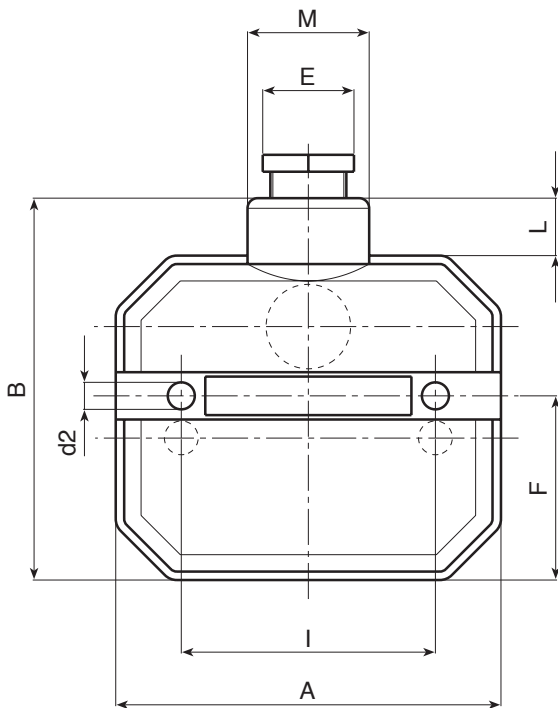
Black (RAL 9011).

### Special requests:

- None.

### Compatible accessories:

4 way terminal block article R530 [page 547].  
 5 way terminal block article R534 [page 549].



art.	A	B	H	I	C	E	F	L	M	N	H1	d1	d2			
R535114.P01	114	114	37	75,5	16,5	27	54,5	17	35,5	42	35	PG16	8			
	d3	d4	d5	g	d6	h	h3	h2	h1	h4	h5	h6	h7	h8	h9	g
	18	9,5	25	112	18	86	4	5	18	31	25	5	2,5	1,5	4,5	112



# R532

## SMALL 4 WAY TERMINAL BLOCK



**Materials:**

Impact resistant, self-extinguishing Polystyrene.

**Surface finish:**

Smooth.

**Colour:**

Black (RAL 9011).

**Inserts:**

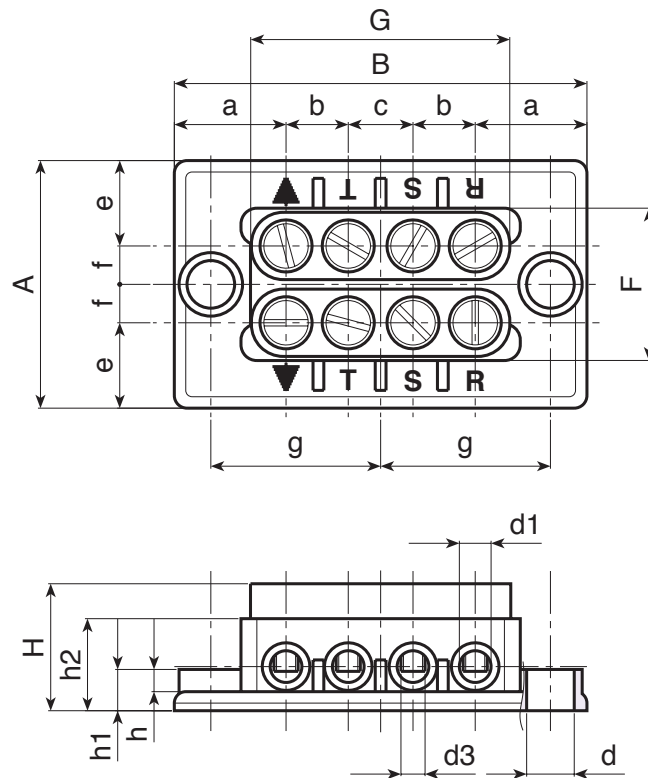
Brass insert with threaded through hole.  
Galvanised steel screw M4x10 DIN 84.

**Special requests:**

- None.

**Compatible accessories:**

Terminal block cover article R533 [page 552].  
Terminal block cover article R536 [page 553].



Art.	A	B	H	F	G	a	b	c	e	f	g	h	h1	h2	d	d1	d2	g
R53265.P01	39	65	20	25	44	17.5	9.7	10.3	13.5	12	27	6	7	14.5	7	5	M4	27



5510

Stock availability as % (🛒)  
90% (●) - 40% (●) - 5% (●)

# R533

## SMALL TERMINAL BLOCK COVER WITH CABLE ENTRY



**Materials:**

Impact resistant, self-extinguishing Polystyrene.

**Surface finish:**

Smooth.

**Colour:**

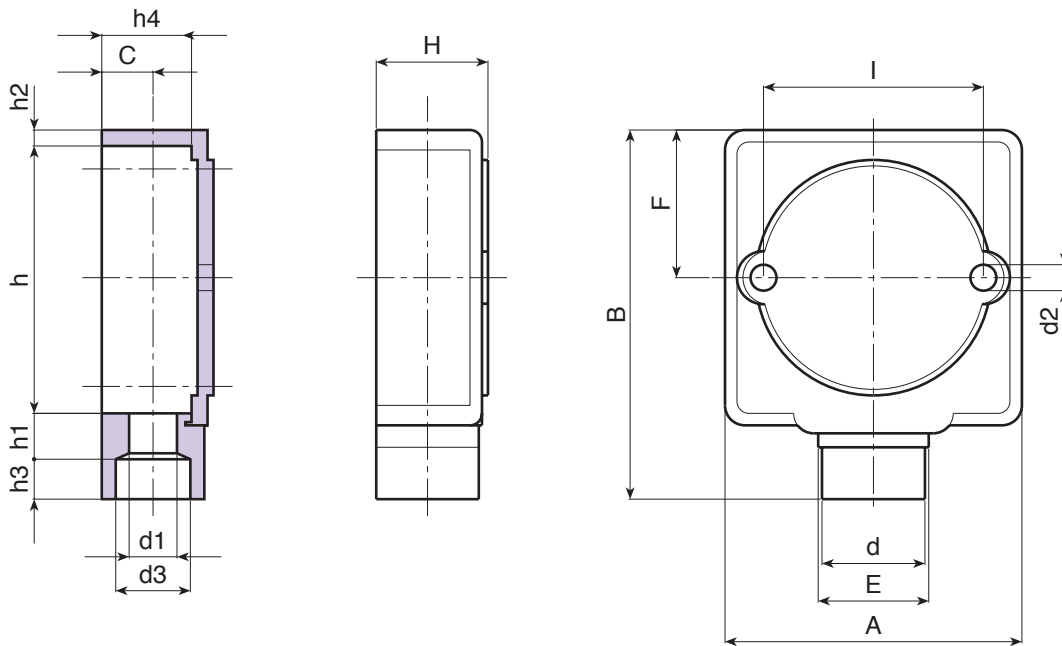
Black (RAL 9011).

**Special requests:**

- None.

**Compatible accessories:**

Terminal block article R532 [page 551].



Art.	A	B	H	I	C	E	F	d	d1	d2	d3	h	h1	h2	h3	h4	g
R533.P01	75	92	29	53	13	28	37	26	12.5	6.5	19	67	11.5	4	10	23	57



552 ()

Stock availability as % (🛒)  
 90% (●) - 40% (●) - 5% (●)

# R536



PS

UL94  
V0



## TERMINAL BLOCK COVER WITH DIAGONAL HOLES AND CABLE ENTRY

### Materials:

Impact resistant, self-extinguishing Polystyrene.

### Surface finish:

Smooth.

### Colour:

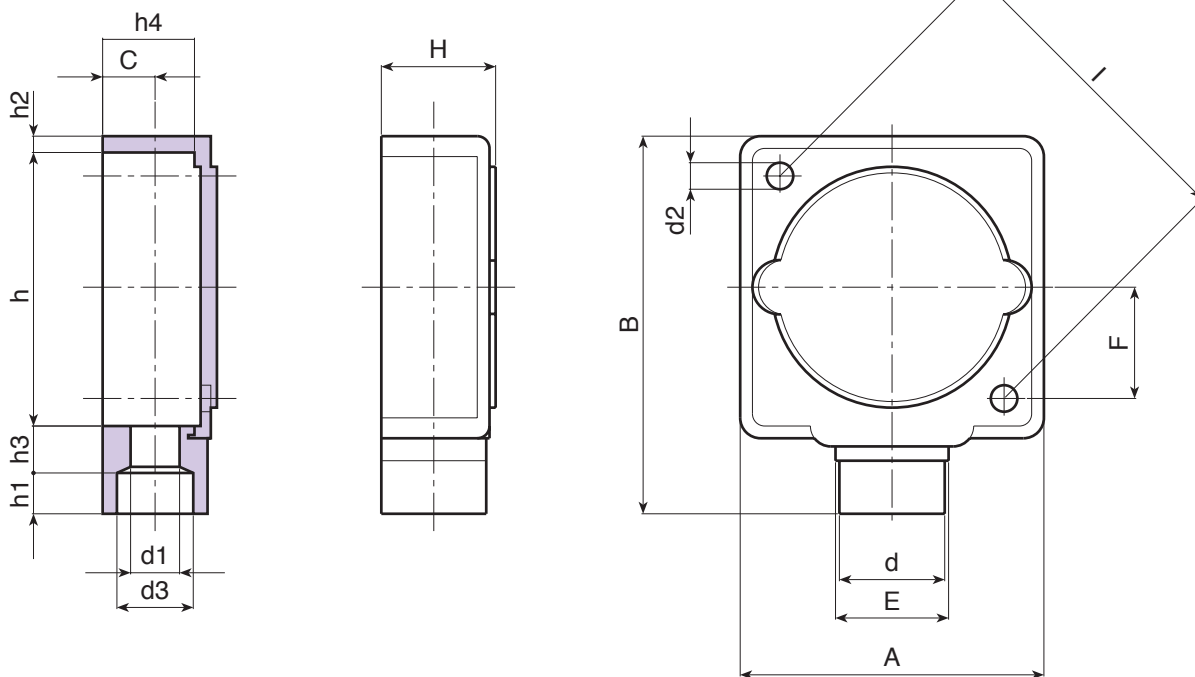
Black (RAL 9011).

### Special requests:

- None.

### Compatible accessories:

Terminal block article R532 [page 551].



Art.	A	B	H	I	C	E	F	d	d1	d2	d3	h	h1	h2	h3	h4	g
R536.P01	75	92	29	78	13	28	27	26	12.5	6.5	19	65	11.5	4	10	23	47

# R537

## COMPLETE "SEALED" 5 WAY TERMINAL BLOCK



### Materials:

(1-3) Impact resistant, self-extinguishing Polystyrene.

### Surface finish:

Smooth.

### Colour:

Black (RAL 9011).

### Inserts:

- Brass insert with threaded through hole.
- (4) Galvanised self-tapping screw 4.2x22 DIN 7981/UNI6954.
- (2) Thermoplastic rubber 75 shore.
- (5) Galvanised steel screw M4x10 DIN 84.
- (6) Rear terminal block cover.

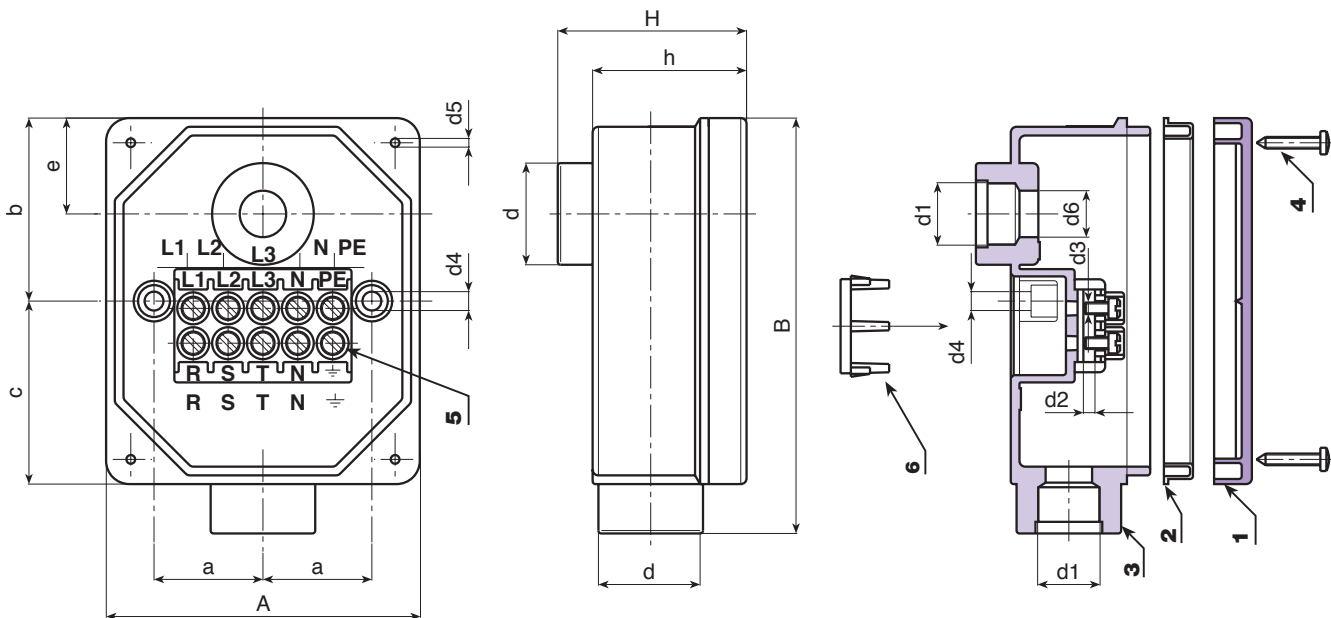
### Degree of protection:

IP54.

### Special Requests:

- None.

Product compliant with norm EN 50262 (20-57).



Art.	A	B	H	h	d	a	b	c	e	d1	d2	d3	d4	d5	d6	g
R537126M20.P01	108	144	67	53	35.5	38	63	29.5	33	M20x1,5	5	M04	6.5	3.5	17.5	312
R537126M25.P01(*)	108	144	67	53	35.5	38	63	29.5	33	M25x1,5	5	M04	6.5	3.5	17.5	308

(\*) Lockable cable section: 2,5mm2 3-cable (220V) or 1,5mm2 5-cable (380V).

# R552

## SPINDLE GUARD

+135°  
-30°

PA6  
+G.F.

UL94  
HB

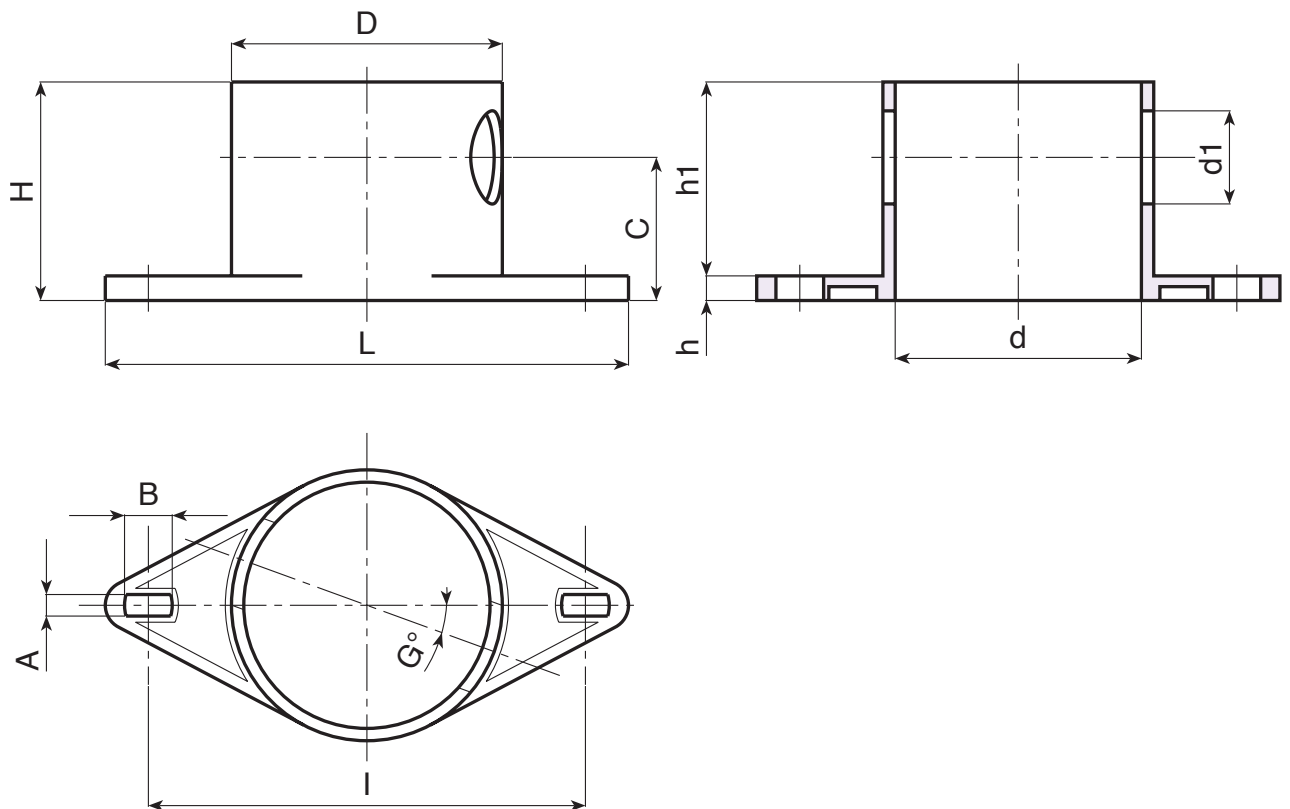
RoHS  
COMPLIANT

**Materials:**  
Reinforced polyamide.  
Resistant to oils and greases.

**Surface finish:**  
Smooth.

**Colour:**  
Black (RAL 9011).

**Special requests:**  
• None.



Art.	H	D	d	L	I	A	B	G	c	h	h1	d1	g
R552170.T01	71	88	80	170	142	7	15	20	46.5	8	63	30	104

# R555

## SPINDLE GUARD WITHOUT SIDE HOLES

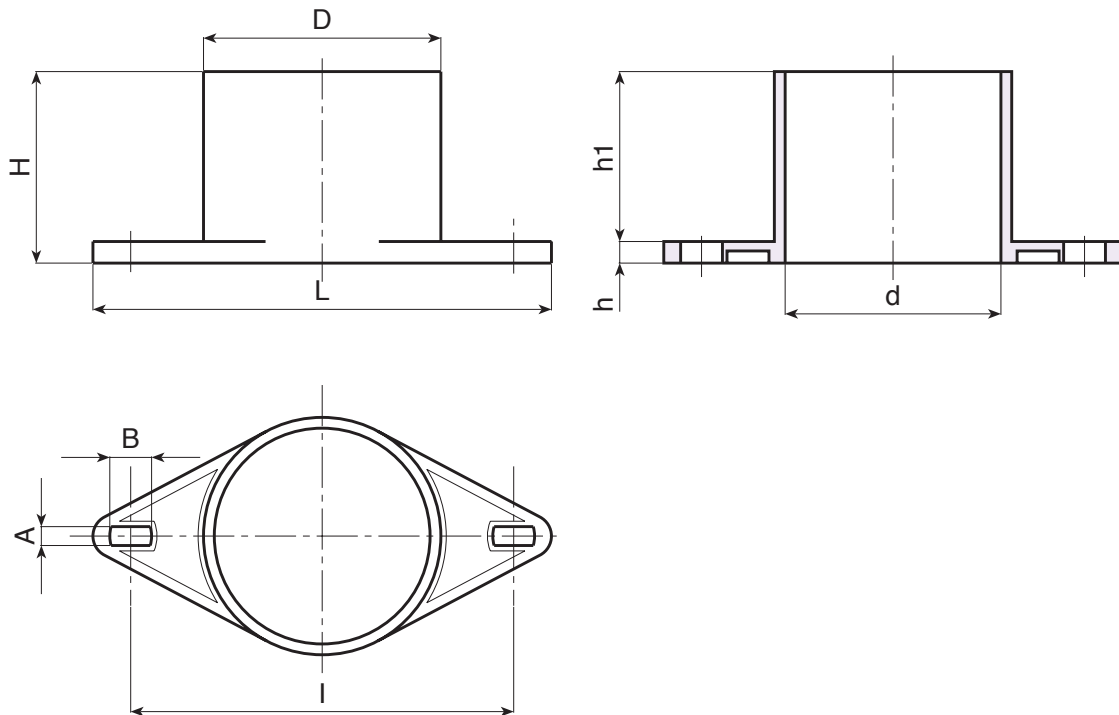


**Materials:**  
Impact resistant polystyrene.

**Surface finish:**  
Smooth.

**Colour:**  
Black (RAL 9011).

**Special requests:**  
• None.



Art.	H	D	d	L	l	A	B	h	h1	g
R555170.T01	71	88	80	170	142	7	15	8	63	100

# R553CH

## CLOSED SPINDLE GUARD



**Materials:**

Reinforced polyamide.  
Resistant to oils and greases.

**Surface finish:**

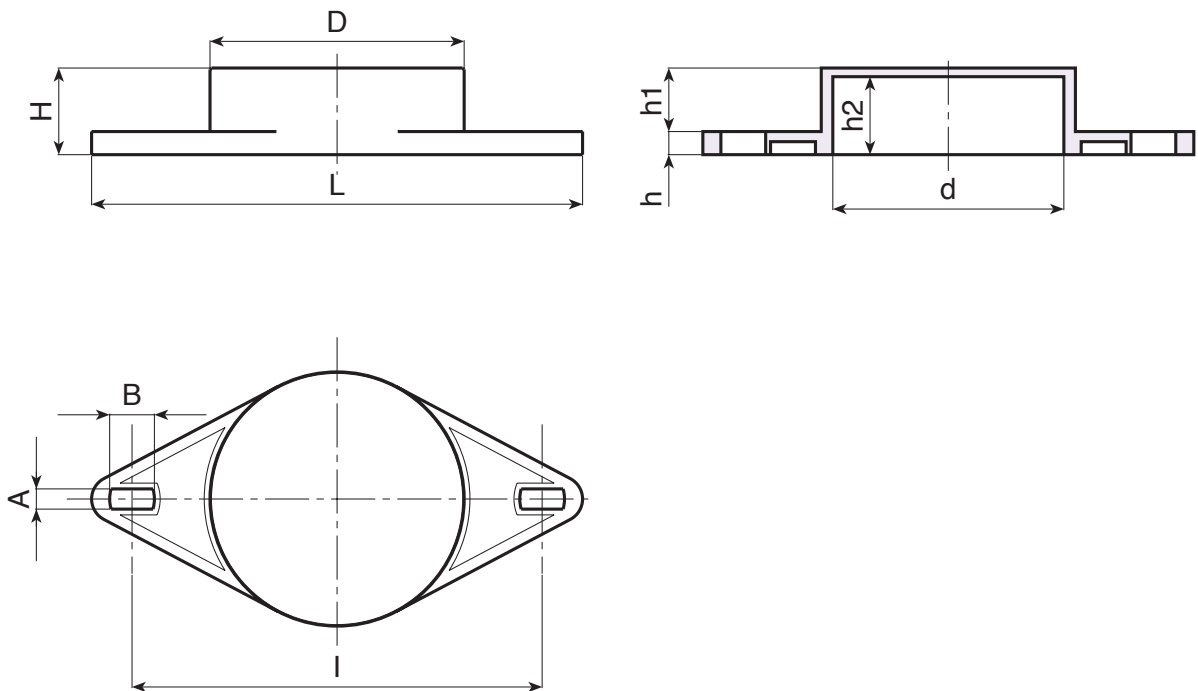
Smooth.

**Colour:**

Black (RAL 9011).

**Special requests:**

- None.



Art.	H	D	d	L	l	A	B	h	h1	h2	g
R553170CH.T01	30	88	80	170	142	7	15	8	20	28	100

# R553AP

## OPEN SPINDLE GUARD

+135°  
-30°

PA6  
+G.F.

UL94  
HB

RoHS  
COMPLIANT

### Materials:

Reinforced polyamide.  
Resistant to oils and greases.

### Surface finish:

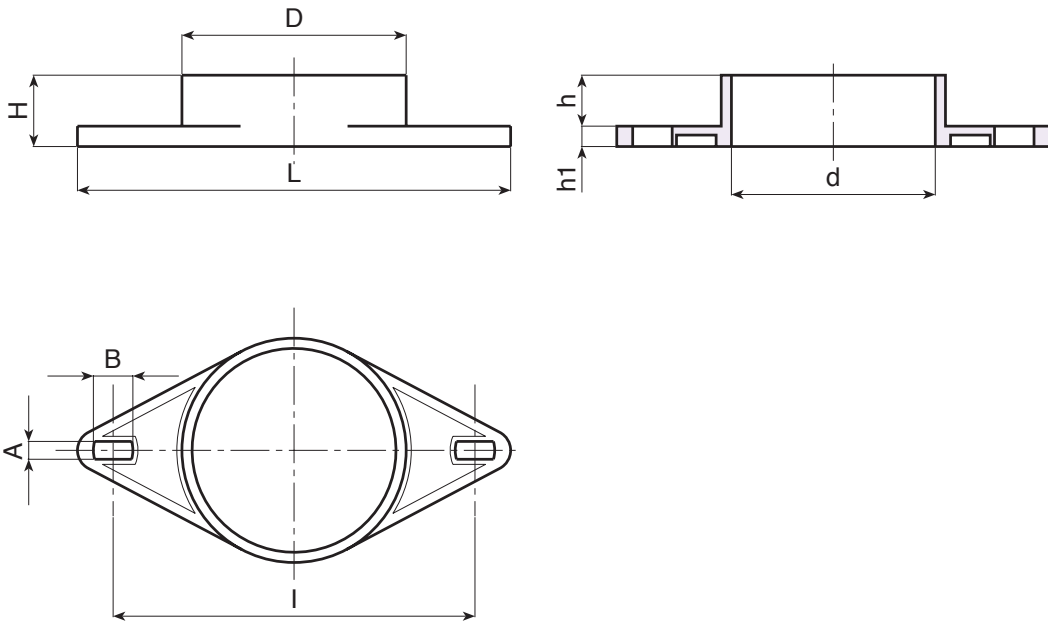
Smooth.

### Colour:

Black (RAL 9011).

### Special requests:

- None.



	Art.	H	D	d	L	l	A	B	h	h1	g
●	R553170AP.T01	28	88	80	170	142	7	15	8	20	50



# R554

## WESCOT SPINDLE GUARD



**Materials:**

Impact resistant polystyrene.

**Surface finish:**

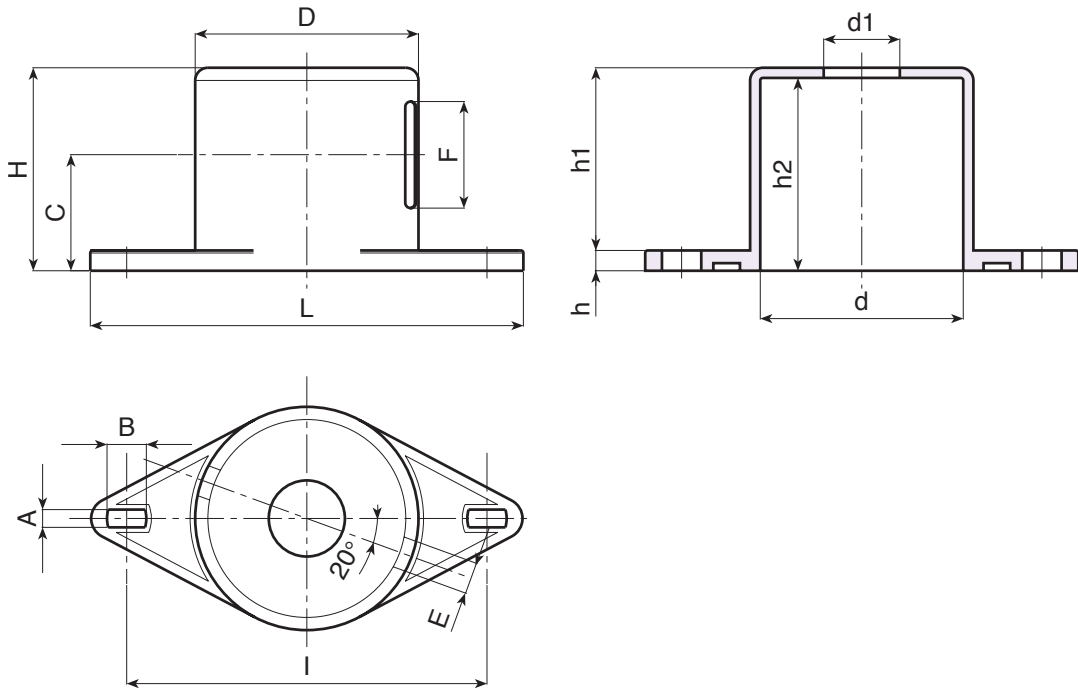
Smooth.

**Colour:**

Black (RAL 9011).

**Special requests:**

- None.



Art.	A	B	H	h	d	a	b	c	e	d1	d2	d3	d4	d5	d6	g
R554170.T01	80	88	80	170	142	7	15	12.5	42	20	46	8	72	76	30	125



559 ()

Stock availability as % (🛒)  
 90% (●) - 40% (●) - 5% (●)



# R100

NEW



## POLYAMIDE MONOLITHIC WHEEL (WITHOUT RIG)

### Materials:

#### Wheel body:

Polyamide. Resistant to oils and greases.

#### Tread:

Polyamide. Resistant to oils and greases.

### Surface finish:

Smooth.

### Colour:

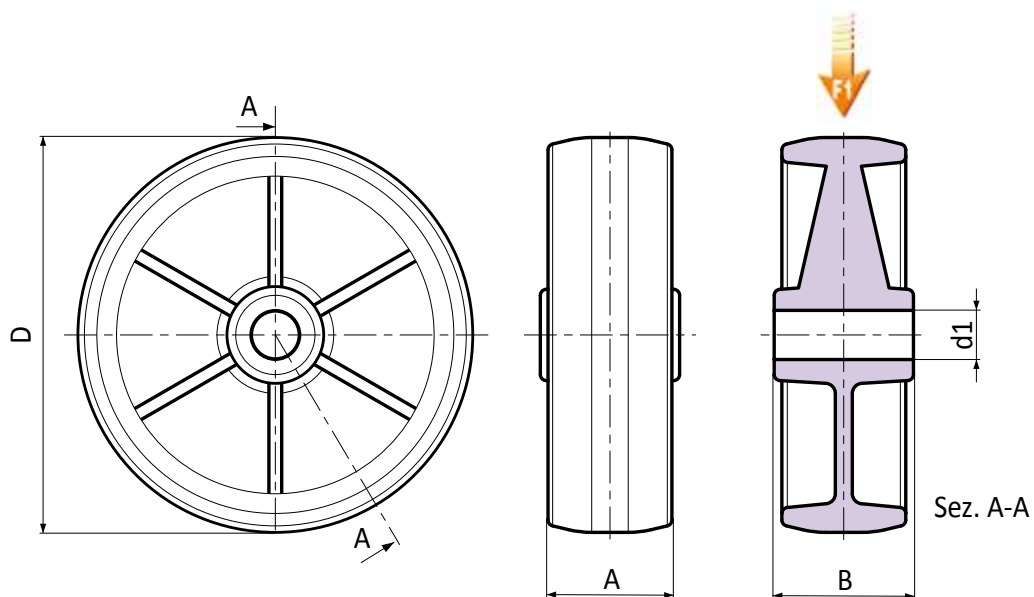
Natural white.

### Wheel rotation:

The hole for the pivot pin is formed by plastic moulding.

### Special requests:

- Upon request and for a minimum of 20 pieces, the wheel can be supplied with a needle roller cage, (replace code no. R100 with code no. R130).



art.	D	A	B	d1	g	F1 (Kg)
R100080.T30D12	80	30	39	12	60	100
R100100.T30D12	100	30	39	12	96	130
R100125.T39D15	125	39	44	15	206	200
R100150.T40D20	150	40	45	20	300	250
R100175.T45D20	175	45	58	20	488	300
R100200.T50D20	200	50	58	20	576	380

# R101

**NEW**



## POLYAMIDE MONOLITHIC WHEEL WITH ROUND STEEL SWIVEL SUPPORT AND SMOOTH THROUGH HOLE

### Materials:

#### Wheel body (1):

Polyamide. Resistant to oils and greases.

#### Tread (2):

Polyamide. Resistant to oils and greases.

### Surface finish:

Smooth.

### Colour:

(1-2) Natural white.

(3-4-5-6) Galvanised blue.

### Wheel rotation (4):

The hole for the pivot pin is formed by plastic moulding. A galvanised steel tube is positioned between the stud and the hole for protection.

### Bracket (3):

Steel fork (DD13).

### Rotating assembly (5):

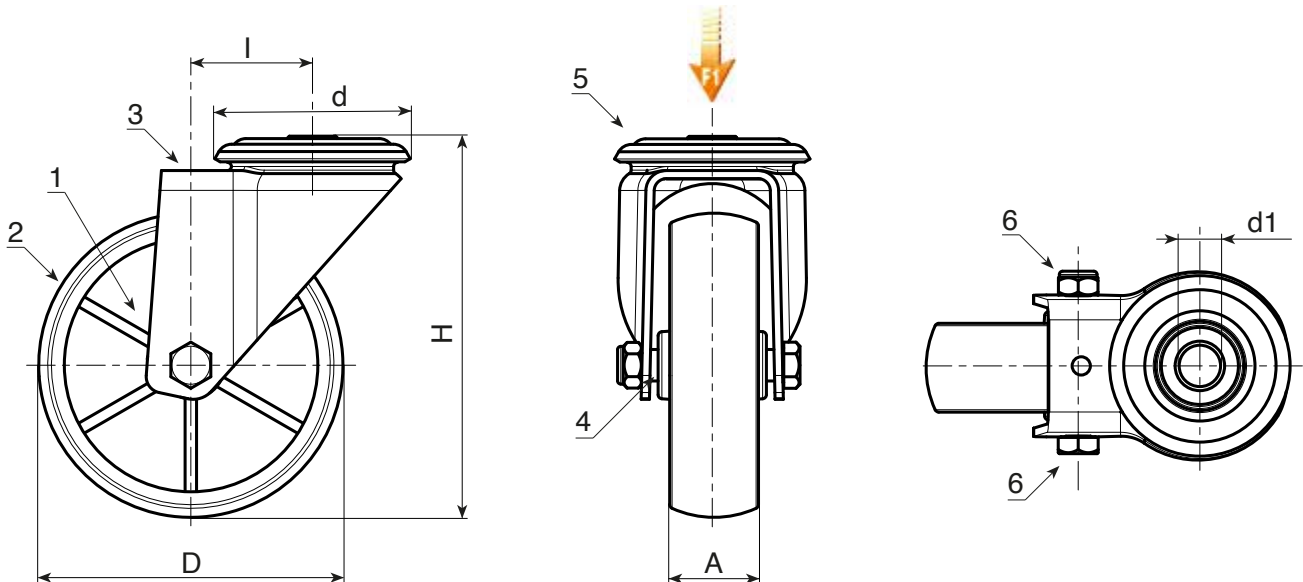
Steel rotating assembly with double ball race and smooth fixing hole, (hole tolerance H7).

### Wheel fastening (6):

Steel hex head screw, coupled with a steel nut.

### Special requests:

- Upon request and for a minimum of 20 pieces, the wheel can be supplied with a needle roller cage, (replace code no. R101 with code no. R131).



art.	D	A	H	I	d	d1H7	g	F1 (Kg)
R101080.T30D12	80	30	108	32	64	12	360	100
R101100.T30D12	100	30	127	32	64	12	400	130
R101125.T39D12	125	39	155	32	64	12	726	130
R101150.T40D12	150	40	184	35	65	12	-	140
R101175.T45D16	175	45	228	48	95	16	-	270
R101200.T50D16	200	50	240	48	95	16	1970	270

# R102

**NEW**



## POLYAMIDE MONOLITHIC WHEEL WITH ROUND STEEL SWIVEL SUPPORT AND SMOOTH THROUGH HOLE WITH BRAKE

### Materials:

#### Wheel body (1):

Polyamide. Resistant to oils and greases.

#### Tread (2):

Polyamide. Resistant to oils and greases.

### Surface finish:

Smooth.

### Colour:

(1-2) Natural white.

(3-4-5-6) Galvanised blue.

### Wheel rotation (4):

The hole for the pivot pin is formed by plastic moulding. A galvanised steel tube is positioned between the stud and the hole for protection.

### Bracket (3):

Steel fork (DD13), with integrated brake.

### Rotating assembly (5):

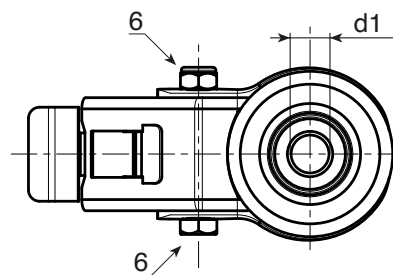
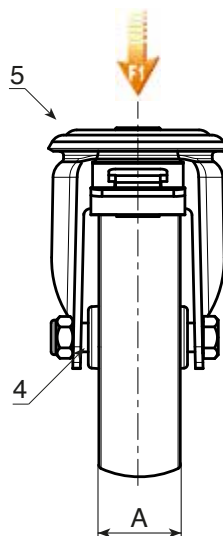
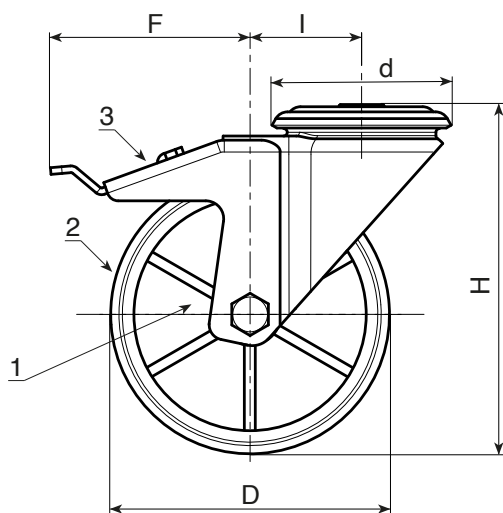
Steel rotating assembly with double ball race and smooth fixing hole, (hole tolerance H7).

### Wheel fastening (6):

Steel hex head screw, coupled with a steel nut.

### Special requests:

- Upon request and for a minimum of 20 pieces, the wheel can be supplied with a needle roller cage, (replace code no. R102 with code no. R132).



art.	D	A	H	I	d	F	d1H7	g	F1 (Kg)
R102080.T30D12	80	30	108	32	64	110	12	531	100
R102100.T30D12	100	30	127	32	64	110	12	512	130
R102125.T39D12	125	39	155	32	64	113	12	802	130
R102150.T40D12	150	40	184	35	65	115	12	-	140
R102175.T45D16	175	45	228	48	95	150	16	-	270
R102200.T50D16	200	50	240	48	95	150	16	2256	270

# R101CIN NEW



## POLYAMIDE MONOLITHIC WHEEL WITH ROUND STAINLESS STEEL SWIVEL SUPPORT AND SMOOTH THROUGH HOLE

INOX

**Materials:**

**Wheel body (1):**

Polyamide. Resistant to oils and greases.

**Tread (2):**

Polyamide. Resistant to oils and greases.

**Surface finish:**

Smooth.

**Colour:**

(1-2) Natural white.

(3-4-5-6) Natural stainless steel.

**Wheel rotation (4):**

The hole for the pivot pin is formed by plastic moulding. A stainless steel (Aisi 304) tube is positioned between the stud and the hole for protection.

**Bracket (3):**

Stainless steel (Aisi 304) fork.

**Rotating assembly (5):**

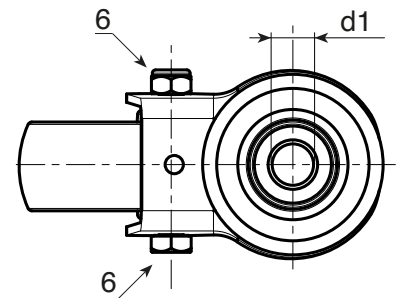
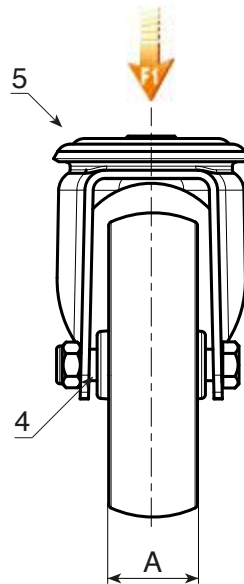
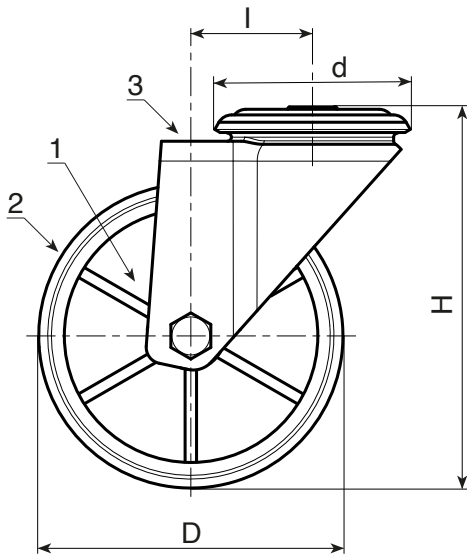
Stainless steel (Aisi 304) rotating assembly with double stainless steel (Aisi 420) ball race and smooth fixing hole, (hole tolerance H7).

**Wheel fastening (6):**

Stainless steel (Aisi 304) hex head bolt, coupled with a stainless steel (Aisi 304) nut.

**Special requests:**

- Upon request and for a minimum of 20 pieces, the wheel can be supplied with a needle roller cage, (replace code no. R101CIN with code no. R131CIN).



INOX

art.	D	A	H	l	d	d1H7	g	F1 (Kg)
R101080.T30D12CIN	80	30	108	32	64	12	340	100
R101100.T30D12CIN	100	30	127	32	64	12	522	130
R101125.T39D12	125	39	155	32	64	12	513	130
R101150.T40D12CIN	150	40	184	35	65	12	-	140
R101175.T45D16CIN	175	45	228	48	95	16	-	300
R101200.T50D16CIN	200	50	240	48	95	16	-	300

# R102CIN NEW



## POLYAMIDE MONOLITHIC WHEEL WITH ROUND STAINLESS STEEL SWIVEL SUPPORT AND SMOOTH THROUGH HOLE WITH BRAKE

INOX

### Materials:

#### Wheel body (1):

Polyamide. Resistant to oils and greases.

#### Tread (2):

Polyamide. Resistant to oils and greases.

### Surface finish:

Smooth.

### Colour:

(1-2) Natural white.

(3-4-5-6) Natural stainless steel.

### Wheel rotation (4):

The hole for the pivot pin is formed by plastic moulding. A stainless steel (Aisi 304) tube is positioned between the stud and the hole for protection.

### Bracket (3):

Stainless steel (Aisi 304) fork, with integrated brake.

### Rotating assembly (5):

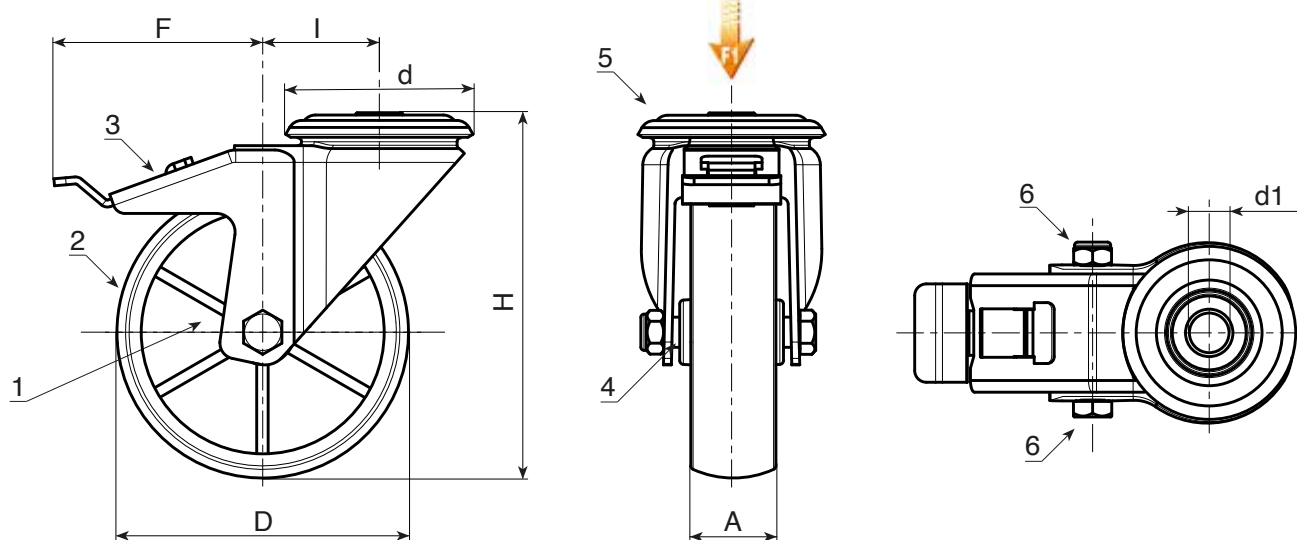
Stainless steel (Aisi 304) rotating assembly with double stainless steel (Aisi 420) ball race and smooth fixing hole, (hole tolerance H7).

### Wheel fastening (6):

Stainless steel (Aisi 304) hex head bolt, coupled with a stainless steel (Aisi 304) nut.

### Special requests:

- Upon request and for a minimum of 20 pieces, the wheel can be supplied with a needle roller cage, (replace code no. R102CIN with code no. R132CIN).



INOX

art.	D	A	H	I	d	F	d1H7	g	F1 (Kg)
● R102080.T30D12CIN	80	30	108	32	64	110	12	451	100
● R102100.T30D12CIN	100	30	127	32	64	110	12	706	130
● R102125.T39D12CIN	125	39	155	32	64	113	12	776	130
● R102150.T40D12CIN	150	40	184	35	65	115	12	-	140
● R102175.T45D16CIN	175	45	228	48	95	150	16	-	300
● R102200.T50D16CIN	200	50	240	48	95	150	16	-	300

# R107

**NEW**



## POLYAMIDE MONOLITHIC WHEEL WITH RECTANGULAR SWIVEL STEEL PLATE

### Materials:

#### Wheel body (1):

Polyamide. Resistant to oils and greases.

#### Tread (2):

Polyamide. Resistant to oils and greases.

### Surface finish:

Smooth.

### Colour:

(1-2) Natural white.

(3-4-5-6) Galvanised blue.

### Wheel rotation (4):

The hole for the pivot pin is formed by plastic moulding. A galvanised steel tube is positioned between the stud and the hole for protection.

### Bracket (3):

Steel fork (DD13).

### Rotating assembly (5):

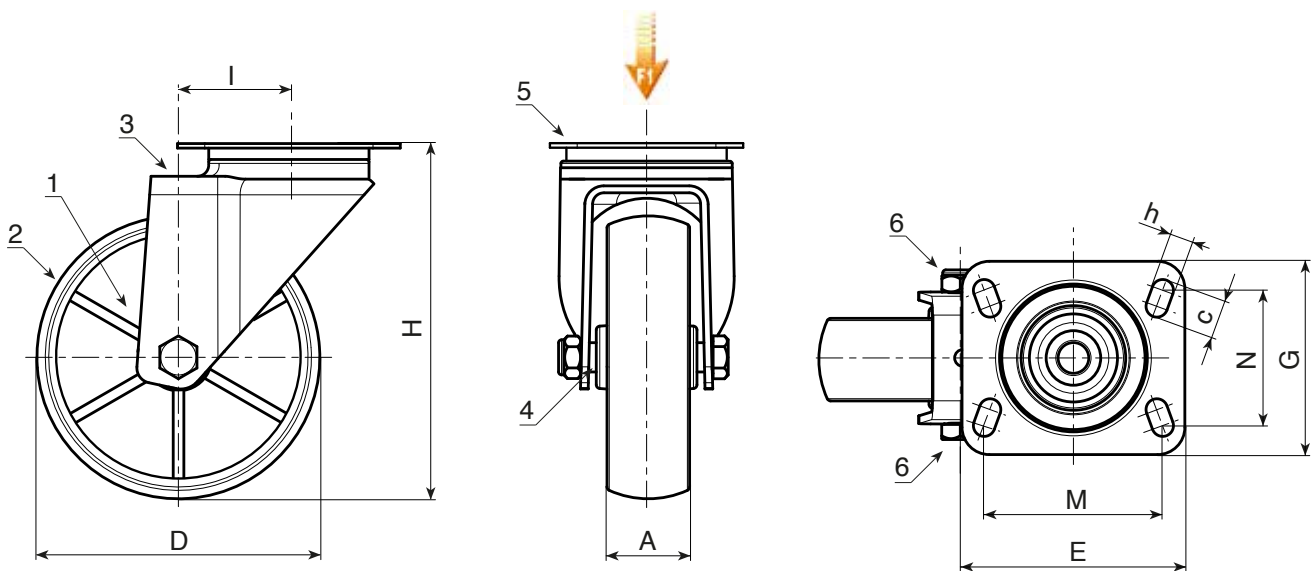
Steel rotating assembly with double ball race, and rectangular swivel plate with four slotted mounting holes.

### Wheel fastening (6):

Steel hex head screw, coupled with a steel nut.

### Special requests:

- Upon request and for a minimum of 20 pieces, the wheel can be supplied with a needle roller cage, (replace code no. R107 with code no. R137).



art.	D	A	H	I	E	G	M	N	c	h	g	F1 (Kg)
R107080.T30P080X060	80	30	108	32	95	80	80	60	12	9	427	100
R107100.T30P080X060	100	30	127	32	95	80	80	60	12	9	468	130
R107125.T39P080X060	125	39	155	32	95	80	80	60	12	9	617	130
R107150.T40P080X060	150	40	184	35	95	100	80	60	12	9	-	140
R107175.T45P105X080	175	45	228	48	129	106	105	80	23	11	1866	270
R107200.T50P105X080	200	50	240	48	129	106	105	80	23	11	2105	270



# R108

**NEW**

max  
4 Km/h

+80°  
-25°

PA6

UL94  
HB

RoHS  
COMPLIANT

## POLYAMIDE MONOLITHIC WHEEL WITH RECTANGULAR STEEL SWIVEL PLATE WITH BRAKE

### Materials:

#### Wheel body (1):

Polyamide. Resistant to oils and greases.

#### Tread (2):

Polyamide. Resistant to oils and greases.

### Surface finish:

Smooth.

### Colour:

(1-2) Natural white.

(3-4-5-6) Galvanised blue.

### Wheel rotation (4):

The hole for the pivot pin is formed by plastic moulding. A galvanised steel tube is positioned between the stud and the hole for protection.

### Bracket (3):

Steel fork (DD13), with integrated brake.

### Rotating assembly (5):

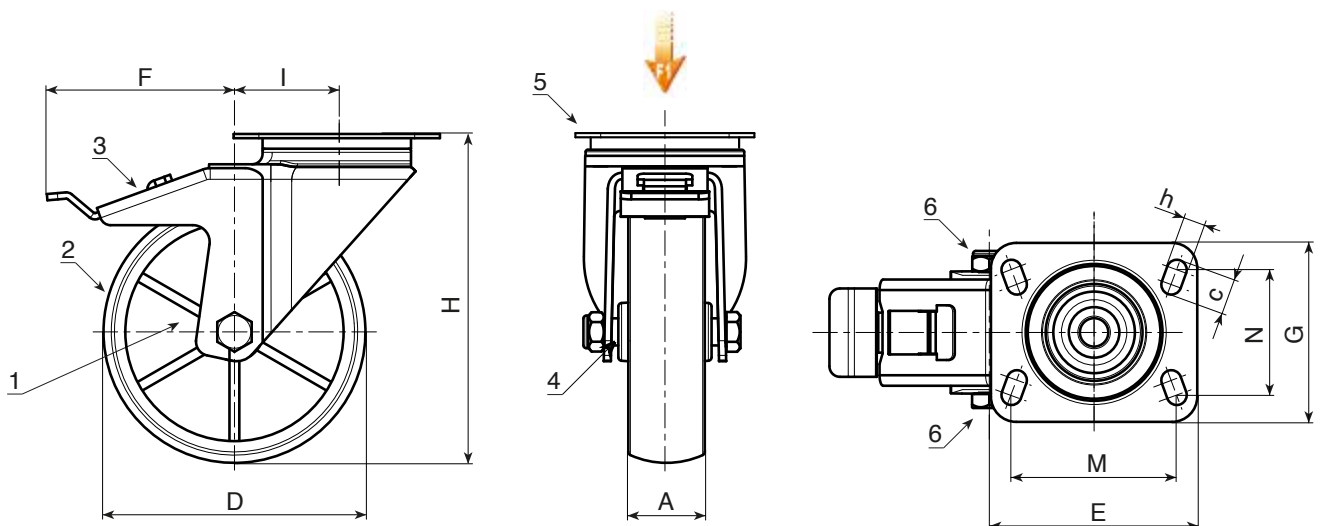
Steel rotating assembly with double ball race, and rectangular swivel plate with four slotted mounting holes.

### Wheel fastening (6):

Steel hex head screw, coupled with a steel nut.

### Special requests:

- Upon request and for a minimum of 20 pieces, the wheel can be supplied with a needle roller cage, (replace code no. R108 with code no. R138).



art.	D	A	H	I	E	G	M	N	c	h	F	g	F1 (Kg)
R108080.T30P080X060	80	30	108	32	95	80	80	60	12	9	110	545	100
R108100.T30P080X060	100	30	127	32	95	80	80	60	12	9	110	592	130
R108125.T39P080X060	125	39	155	32	95	80	80	60	12	9	113	914	130
R108150.T40P080X060	150	40	184	35	95	100	80	60	12	9	115	-	140
R108175.T45P105X080	175	45	228	48	129	106	105	80	23	11	150	2192	270
R108200.T50P105X080	200	50	240	48	129	106	105	80	23	11	150	2386	270

# R107CIN NEW



## POLYAMIDE MONOLITHIC WHEEL WITH RECTANGULAR STAINLESS STEEL SWIVEL PLATE

INOX

**Materials:**

**Wheel body (1):**

Polyamide. Resistant to oils and greases.

**Tread (2):**

Polyamide. Resistant to oils and greases.

**Surface finish:**

Smooth.

**Colour:**

(1-2) Natural white.

(3-4-5-6) Galvanised blue.

**Wheel rotation (4):**

The hole for the pivot pin is formed by plastic moulding. A galvanised steel tube is positioned between the stud and the hole for protection.

**Bracket (3):**

Stainless steel (Aisi 304) fork.

**Rotating assembly (5):**

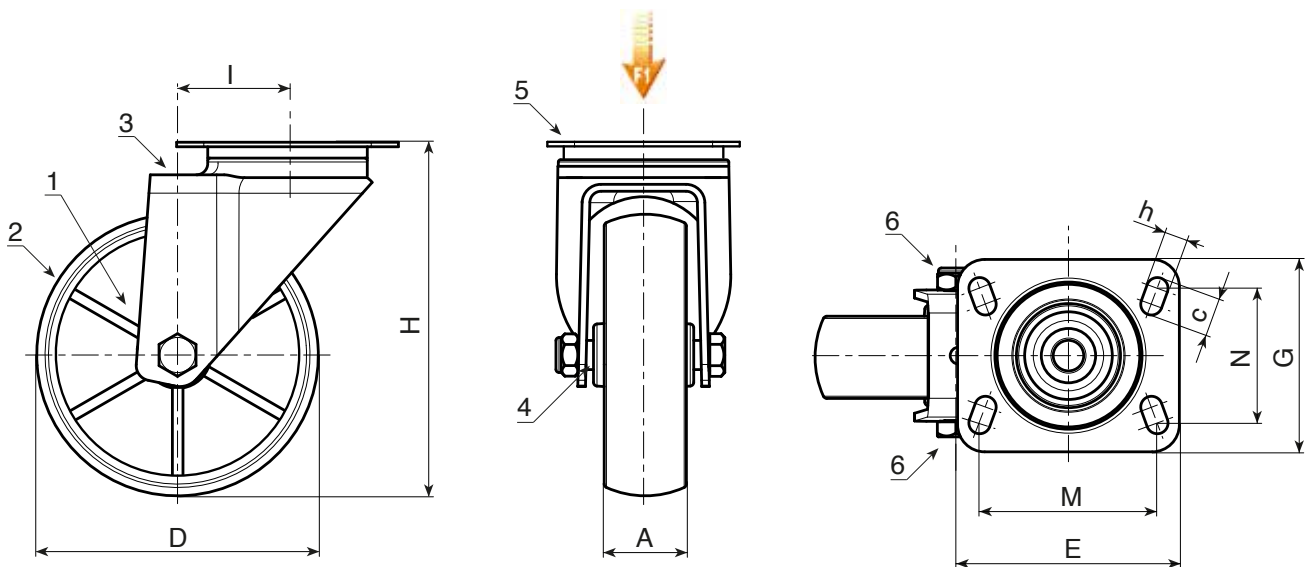
Stainless steel rotating assembly (Aisi 304) with double stainless steel (Aisi 420) ball race, and rectangular swivel plate with four slotted mounting holes.

**Wheel fastening (6):**

Stainless steel (Aisi 304) hex head bolt, coupled with a stainless steel (Aisi 304) nut.

**Special requests:**

- Upon request and for a minimum of 20 pieces, the wheel can be supplied with a needle roller cage, (replace code no. R107CIN with code no. R137CIN).



INOX

art.	D	A	H	I	E	G	M	N	c	h	g	F1 (Kg)
● R107080.T30P080X060CIN	80	30	108	32	95	80	80	60	12	9	410	100
● R107100.T30P080X060CIN	100	30	127	32	95	80	80	60	12	9	450	130
● R107125.T39P080X060CIN	125	39	155	32	95	80	80	60	12	9	888	130
● R107150.T40P080X060CIN	150	40	184	35	95	100	80	60	12	9	-	140
● R107175.T45P105X080CIN	175	45	228	48	129	106	105	80	23	11	1854	300
● R107200.T50P105X080CIN	200	50	240	48	129	106	105	80	23	11	2046	300

# R108CIN



## POLYAMIDE MONOLITHIC WHEEL WITH RECTANGULAR STAINLESS STEEL SWIVEL PLATE WITH BRAKE

INOX

### Materials:

#### Wheel body (1):

Polyamide. Resistant to oils and greases.

#### Tread (2):

Polyamide. Resistant to oils and greases.

### Surface finish:

Smooth.

### Colour:

(1-2) Natural white.  
(3-4-5-6) Natural stainless steel.

### Wheel rotation (4):

The hole for the pivot pin is formed by plastic moulding. A stainless steel (Aisi 304) tube is positioned between the stud and the hole for protection.

### Bracket (3):

Stainless steel (Aisi 304) fork, with integrated brake.

### Rotating assembly (5):

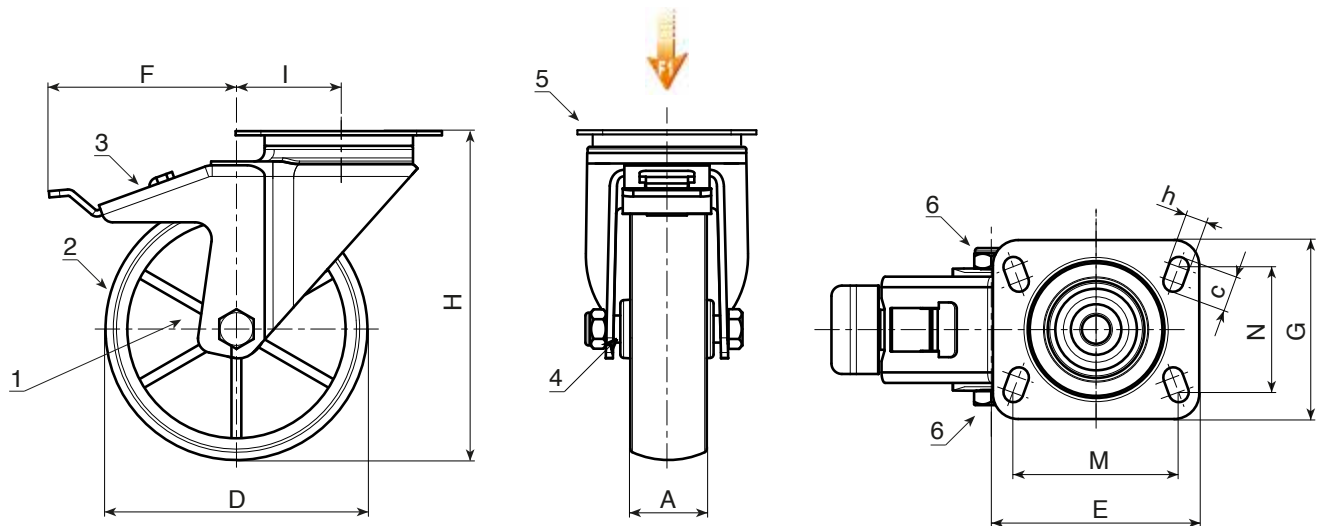
Stainless steel rotating assembly (Aisi 304) with double stainless steel (Aisi 420) ball race, and rectangular swivel plate with four slotted mounting holes.

### Wheel fastening (6):

Stainless steel (Aisi 304) hex head bolt, coupled with a stainless steel (Aisi 304) nut.

### Special requests:

- Upon request and for a minimum of 20 pieces, the wheel can be supplied with a needle roller cage, (replace code no. R108CIN with code no. R138CIN).



INOX

art.	D	A	H	I	E	G	M	N	c	h	F	g	F1 (Kg)
● R108080.T30P080X060CIN	80	30	108	32	95	80	80	60	12	9	110	462	100
● R108100.T30P080X060CIN	100	30	127	32	95	80	80	60	12	9	110	568	130
● R108125.T39P080X060CIN	125	39	155	32	95	80	80	60	12	9	113	850	130
● R108150.T40P080X060CIN	150	40	184	35	95	100	80	60	12	9	115	-	140
● R108175.T45P105X080CIN	175	45	228	48	129	106	105	80	23	11	150	-	300
● R108200.T50P105X080CIN	200	50	240	48	129	106	105	80	23	11	150	2402	300

# R109

**NEW**



## POLYAMIDE MONOLITHIC WHEEL WITH RIGID STEEL FORK

### Materials:

#### Wheel body (1):

Polyamide. Resistant to oils and greases.

#### Tread (2):

Polyamide. Resistant to oils and greases.

### Surface finish:

Smooth.

### Colour:

(1-2) Natural white.

(3-4-6) Galvanised blue.

### Wheel rotation (4):

The hole for the pivot pin is formed by plastic moulding. A galvanised steel tube is positioned between the stud and the hole for protection.

### Bracket (3):

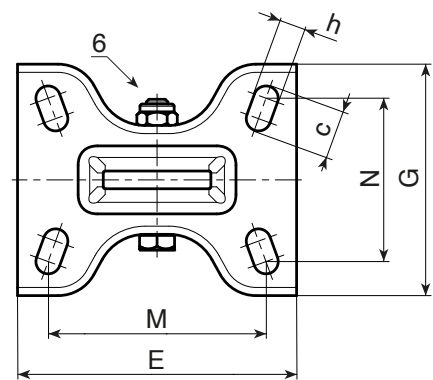
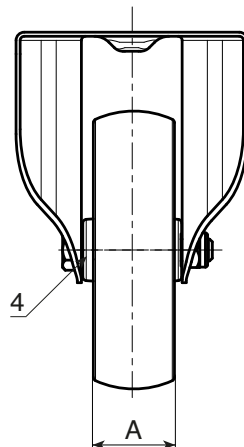
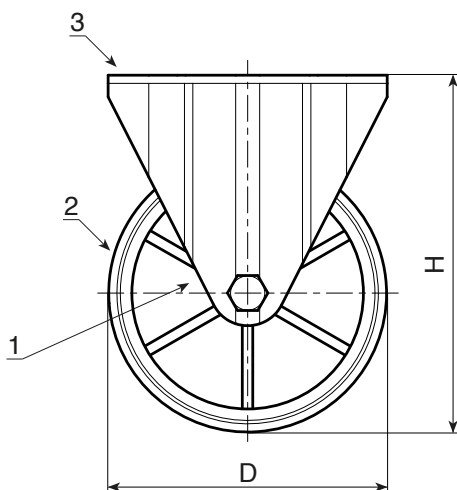
Rigid steel (DD13) fork, with mounting holes in the base.

### Wheel fastening (6):

Steel hex head screw, coupled with a steel nut.

### Special requests:

- Upon request and for a minimum of 20 pieces, the wheel can be supplied with a needle roller cage, (replace code no. R109 with code no. R139).



art.	D	A	H	E	G	M	N	c	h	g	F1 (Kg)
R109080.T30P080X060	80	30	108	100	84	80	60	12	9	338	100
R109100.T30P080X060	100	30	127	100	84	80	60	12	9	378	130
R109125.T39P080X060	125	39	155	100	84	80	60	12	9	639	180
R109150.T40P080X060	150	40	184	100	84	80	60	12	9	-	140
R109175.T45P105X080	175	45	228	135	110	105	80	23	11	-	270
R109200.T50P105X080	200	50	240	135	110	105	80	23	11	1444	300

# R109CIN NEW



## POLYAMIDE MONOLITHIC WHEEL WITH RIGID STAINLESS STEEL FORK

INOX

### Materials:

#### Wheel body (1):

Polyamide. Resistant to oils and greases.

#### Tread (2):

Polyamide. Resistant to oils and greases.

### Surface finish:

Smooth.

### Colour:

(1-2) Natural white.

(3-4-6) Natural stainless steel.

### Wheel rotation (4):

The hole for the pivot pin is formed by plastic moulding. A stainless steel (Aisi 304) tube is positioned between the stud and the hole for protection.

### Bracket (3):

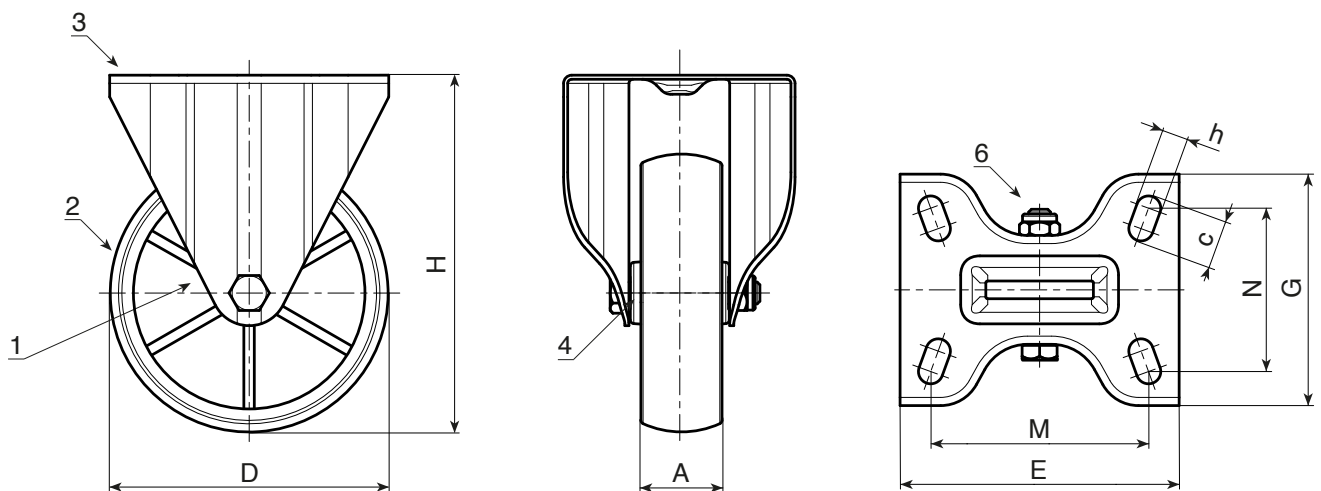
Rigid stainless steel (Aisi 304) fork, with mounting holes in the base.

### Wheel fastening (6):

Stainless steel (Aisi 304) hex head bolt, coupled with a stainless steel (Aisi 304) nut.

### Special requests:

- Upon request and for a minimum of 20 pieces, the wheel can be supplied with a needle roller cage, (replace code no. R109CIN with code no. R139CIN).



INOX

art.	D	A	H	E	G	M	N	c	h	$\hat{g}$	F1 (Kg)
● R109080.T30P080X060CIN	80	30	108	100	84	80	60	12	9	312	100
● R109100.T30P080X060CIN	100	30	127	100	84	80	60	12	9	347	130
● R109125.T39P080X060CIN	125	39	155	100	84	80	60	12	9	532	180
● R109150.T40P080X060CIN	150	40	184	100	84	80	60	12	9	-	140
● R109175.T45P105X080CIN	175	45	228	135	110	105	80	23	11	-	300
● R109200.T50P105X080CIN	200	50	240	135	110	105	80	23	11	1444	300

# R150

NEW



PA6

UL94  
HB



## POLYAMIDE MONOLITHIC WHEEL WITH BALL BEARING WITHOUT RIG (HEAVY DUTY)

### Materials:

#### Wheel body:

Polyamide. Resistant to oils and greases.

#### Tread:

Polyamide. Resistant to oils and greases.

### Surface finish:

Smooth.

### Colour:

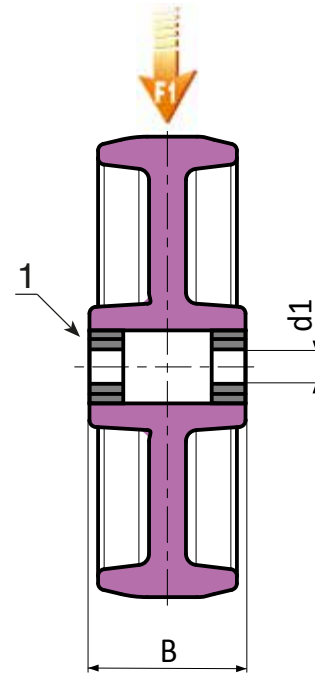
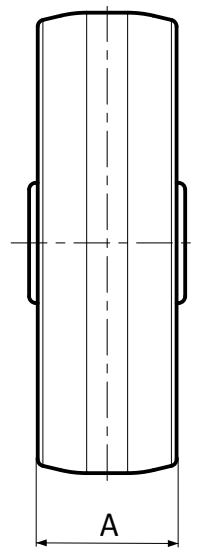
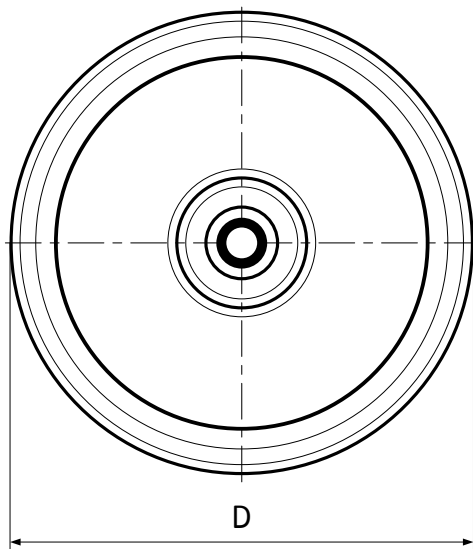
Natural white.

### Wheel rotation:

(1) A pair of steel ball bearings is inserted in the wheel hub to provide excellent rollability under a heavy load.

### Special requests:

- Upon request and for a minimum of 20 pieces, the wheel can be supplied with a needle roller cage, (replace code no. R150 with code no. R140).



art.	D	A	B	d1	g	F1 (Kg)
R150100.T35D15	100	35	40	15	-	370
R150125.T35D15	125	35	40	15	-	380
R150125.T45D20	125	45	58	20	-	600
R150150.T40D20	150	40	49	20	-	380
R150150.T45D20	150	45	58	20	-	700
R150200.T50D20	200	50	58	20	-	800

# R157

**NEW**



## POLYAMIDE MONOLITHIC WHEEL WITH RECTANGULAR SWIVEL STEEL PLATE WITH BEARING (HEAVY DUTY)

### Materials:

#### Wheel body (1):

Polyamide. Resistant to oils and greases.

#### Tread (2):

Polyamide. Resistant to oils and greases.

### Surface finish:

Smooth.

### Colour:

(1-2) Natural white.

(3-4-5-6) Galvanised blue.

### Wheel rotation (4):

A pair of steel ball bearings is inserted to provide excellent rollability.

### Bracket (3):

Extra-thick steel (DD13) fork.

### Rotating assembly (5):

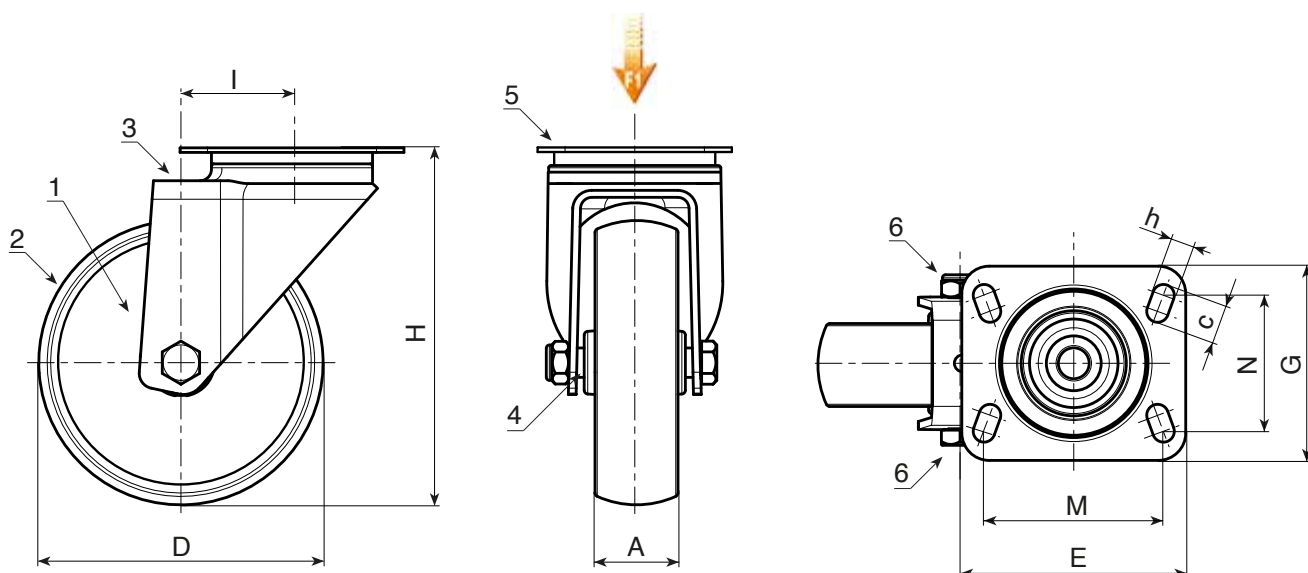
Steel rotating assembly with double ball race, assembled with steel screw grade 8.8 and rectangular swivel plate with four slotted mounting holes.

### Wheel fastening (6):

Steel hex head screw, coupled with a self-locking steel nut.

### Special requests:

- Upon request and for a minimum of 20 pieces, the wheel can be supplied with a needle roller cage, (replace code no. R157 with code no. R147).



art.	D	A	H	I	E	G	M	N	c	h	g	F1 (Kg)
● R157100.T35P080X060	100	35	135	47	100	84	80	60	12	9	-	370
● R157125.T35P080X060	125	35	161	51	100	84	80	60	12	9	-	380
● R157125.T45P105X080	125	45	164	61	132	110	105	80	23	12	-	600
● R157150.T40P105X080	150	40	188	45	132	110	105	80	23	12	-	330
● R157150.T45P105X080	150	45	195	60	132	110	105	80	23	12	-	600
● R157200.T50P105X080	200	50	242	59	132	110	105	80	23	12	-	600

# R158



## POLYAMIDE MONOLITHIC WHEEL WITH RECTANGULAR SWIVEL STEEL PLATE WITH BEARING - WITH BRAKE (HEAVY DUTY)

### Materials:

#### Wheel body (1):

Polyamide. Resistant to oils and greases.

#### Tread (2):

Polyamide. Resistant to oils and greases.

### Surface finish:

Smooth.

### Colour:

(1-2) Natural white.

(3-4-5-6) Galvanised blue.

### Wheel rotation (4):

A pair of steel ball bearings is inserted to provide excellent rollability.

### Bracket (3):

Extra-thick steel (DD13) fork, with integrated brake.

### Rotating assembly (5):

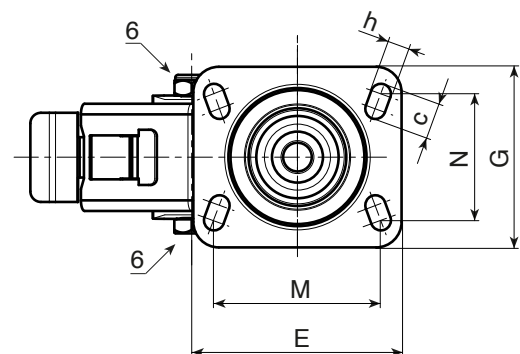
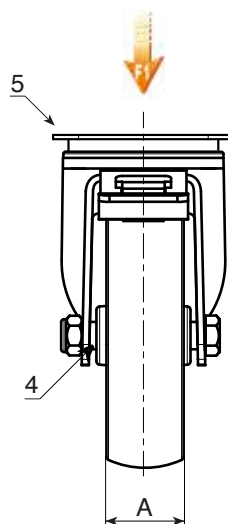
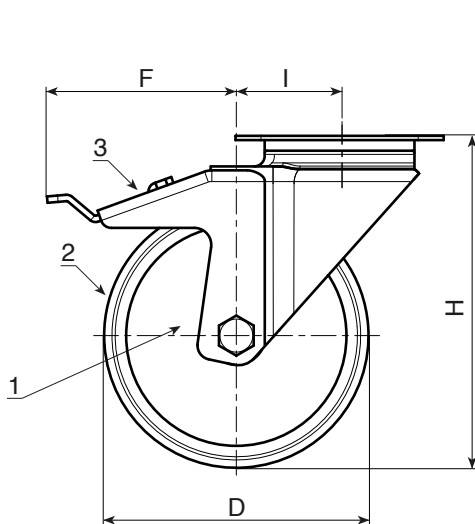
Steel rotating assembly with double ball race, assembled with steel screw grade 8.8 and rectangular swivel plate with four slotted mounting holes.

### Wheel fastening (6):

Steel hex head screw, coupled with a self-locking steel nut.

### Special requests:

- Upon request and for a minimum of 20 pieces, the wheel can be supplied with a needle roller cage, (replace code no. R158 with code no. R148).



art.	D	A	H	I	E	G	M	N	c	h	F	g	F1 (Kg)
R158100.T35P080X060	100	35	135	47	100	84	80	60	12	9	99	-	370
R158125.T35P080X060	125	35	161	51	100	84	80	60	12	9	100	-	380
R158125.T45P105X080	125	45	164	61	132	110	105	80	23	12	104	-	600
R158150.T40P105X080	150	40	188	45	132	110	105	80	23	12	108	-	330
R158150.T45P105X080	150	45	195	60	132	110	105	80	23	12	107	-	600
R158200.T50P105X080	200	50	242	59	132	110	105	80	23	12	109	-	600



# R159

**NEW**

max  
4 Km/h

+80°  
-25°

PA6

UL94  
HB

RoHS  
COMPLIANT

## POLYAMIDE MONOLITHIC WHEEL WITH RIGID STEEL FORK WITH BEARING (HEAVY DUTY)

### Materials:

#### Wheel body (1):

Polyamide. Resistant to oils and greases.

#### Tread (2):

Polyamide. Resistant to oils and greases.

### Surface finish:

Smooth.

### Colour:

(1-2) Natural white.

(3-4-5-6) Galvanised blue.

### Wheel rotation (4):

A pair of steel ball bearings is inserted to provide excellent rollability.

### Bracket (3):

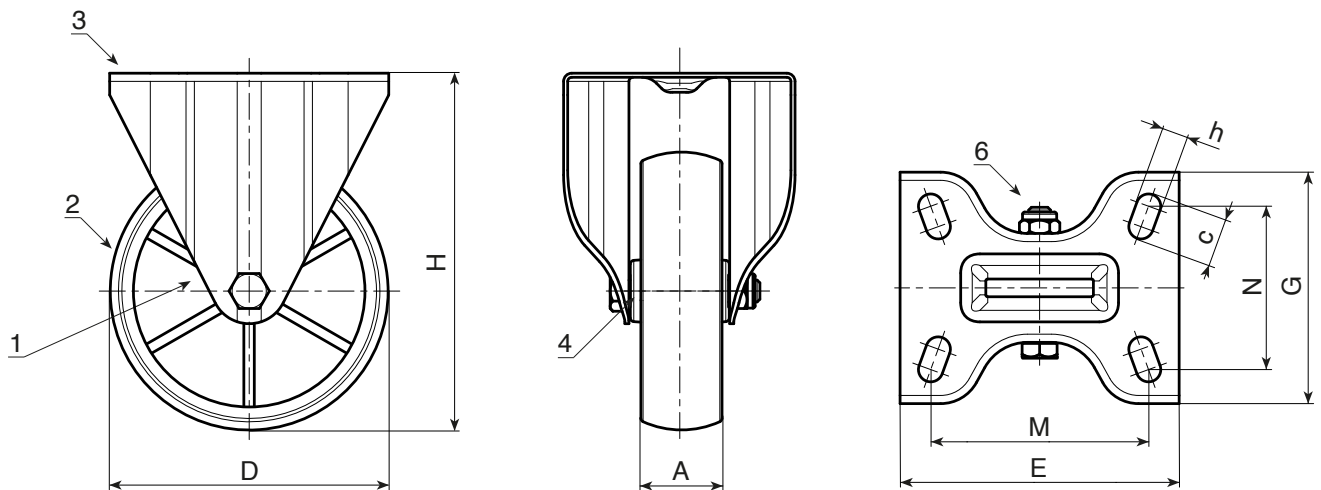
Extra-thick steel (DD13) fork, with mounting holes in the base.

### Wheel fastening (6):

Steel hex head screw, coupled with a self-locking steel nut.

### Special requests:

- Upon request and for a minimum of 20 pieces, the wheel can be supplied with a needle roller cage, (replace code no. R159 with code no. R149).



art.	D	A	H	E	G	M	N	c	h	g	F1 (Kg)
R159100.T35P080X060	100	35	135	100	88	80	60	12	9	-	370
R159125.T35P080X060	125	35	161	100	88	80	60	12	9	-	380
R157125.T45P105X080	125	45	164	134	114	105	80	23	12	-	600
R159150.T40P105X080	150	40	188	134	111	105	80	23	12	-	330
R159150.T45P105X080	150	45	195	134	114	105	80	23	12	-	600
R159200.T50P105X080	200	50	242	134	114	105	80	23	12	-	600



# R200

**NEW**



## WHEEL WITH POLYAMIDE BODY AND INJECTED POLYURETHANE TREAD (WITHOUT RIG)

**Materials:**

**Wheel body:**

Polyamide. Resistant to oils and greases.

**Tread:**

Injected polyurethane. Hardness  $60 \pm 5$  Shore D.

**Surface finish:**

Smooth.

**Colour:**

**Body:**

Natural white.

**Tread:**

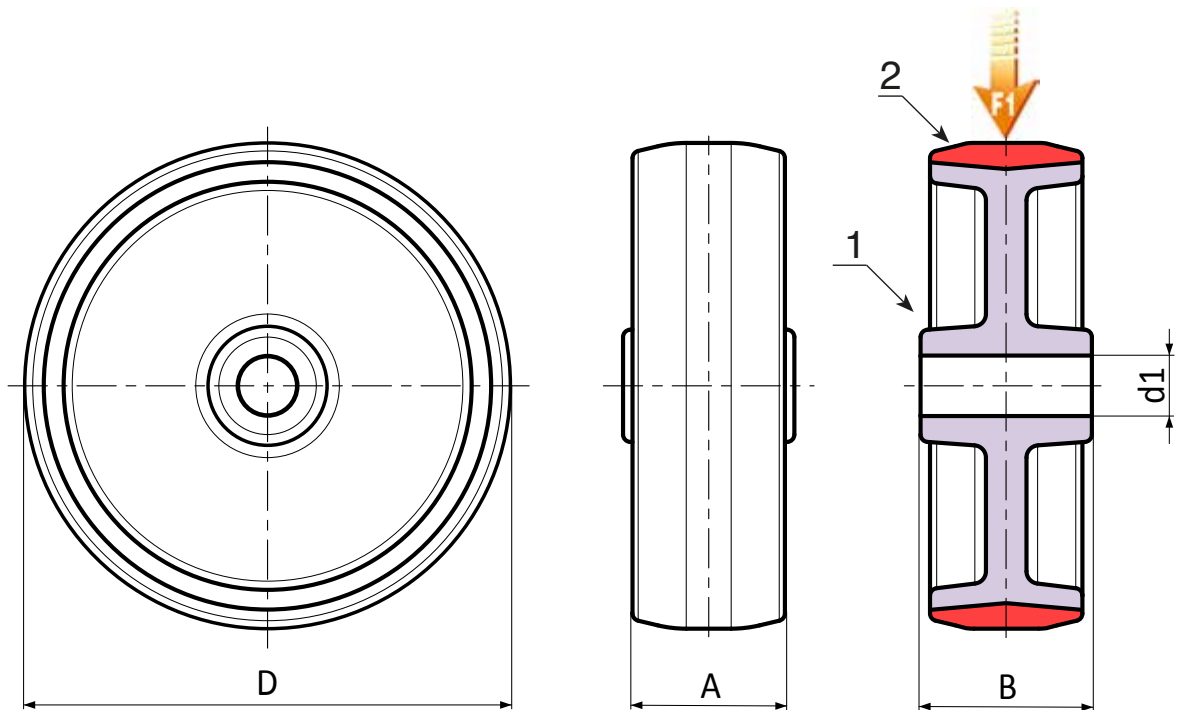
Red (Ral 3013).

**Wheel rotation:**

The hole for the pivot pin is formed by plastic moulding.

**Special requests:**

- Upon request and for a minimum of 20 pieces, the wheel can be supplied with a needle roller cage, (replace code no. R200 with code no. R230).



art.	D	A	B	d1	g	F1 (Kg)
R200080.T30D12	80	30	40	12	104	100
R200100.T30D12	100	30	40	12	152	130
R200125.T35D15	125	35	44	15	254	200
R200150.T40D15	150	40	44	15	229	250
R200200.T50D20	200	50	58	20	818	365

Stock availability as % (🛒)  
 90% (●) - 40% (●) - 5% (●)

# R201

**NEW**



## POLYAMIDE / POLYURETHANE WHEEL WITH ROUND STEEL SWIVEL SUPPORT AND SMOOTH THROUGH HOLE

### Materials:

#### Wheel body (1):

Polyamide. Resistant to oils and greases.

#### Tread (2):

Injected polyurethane. Hardness  $60 \pm 5$  Shore D.

#### Surface finish:

Smooth.

#### Colour:

(1) Natural white.

(2) Red (Ral 3013).

(3-4-5-6) Galvanised blue.

#### Wheel rotation (4):

The hole for the pivot pin is formed by plastic moulding. A galvanised steel tube is positioned between the stud and the hole for protection.

#### Bracket (3):

Steel fork (DD13).

#### Rotating assembly (5):

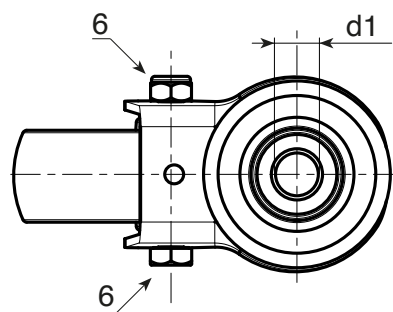
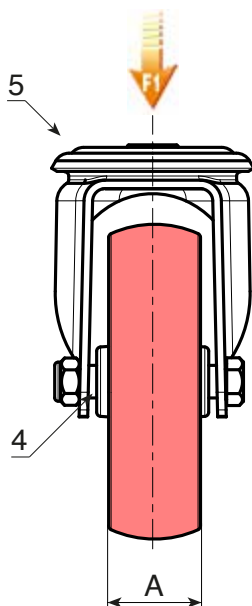
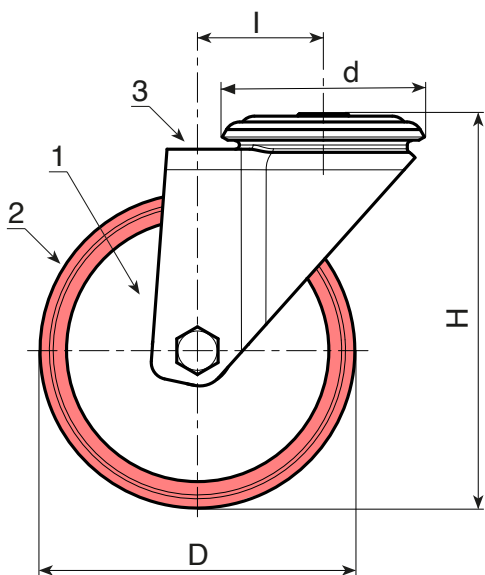
Steel rotating assembly with double ball race and smooth fixing hole, (hole tolerance H7).

#### Wheel fastening (6):

Steel hex head screw, coupled with a steel nut.

#### Special requests:

- Upon request and for a minimum of 20 pieces, the wheel can be supplied with a needle roller cage, (replace code no. R201 with code no. R231).



art.	D	A	H	I	d	d1H7	g	F1 (Kg)
R201080.T30D12	80	30	108	32	64	12	486	100
R201100.T30D12	100	30	127	32	64	12	1170	130
R201125.T35D12	125	35	155	32	64	12	772	130
R201150.T40D12	150	40	184	35	65	12	-	140
R201200.T50D16	200	50	240	48	95	16	1934	270

# R202

**NEW**



## POLYAMIDE / POLYURETHANE WHEEL WITH ROUND STEEL SWIVEL SUPPORT AND SMOOTH THROUGH HOLE - WITH BRAKE

### Materials:

#### Wheel body (1):

Polyamide. Resistant to oils and greases.

#### Tread (2):

Injected polyurethane. Hardness  $60 \pm 5$  Shore D.

### Surface finish:

Smooth.

### Colour:

(1) Natural white.

(2) Red (Ral 3013).

(3-4-5-6) Galvanised blue.

### Wheel rotation (4):

The hole for the pivot pin is formed by plastic moulding. A galvanised steel tube is positioned between the stud and the hole for protection.

### Bracket (3):

Steel fork (DD13), with integrated brake.

### Rotating assembly (5):

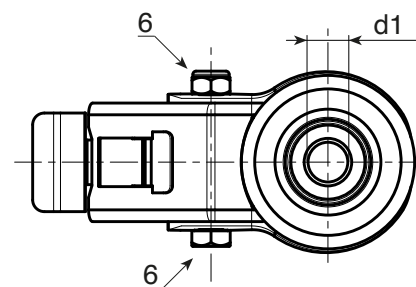
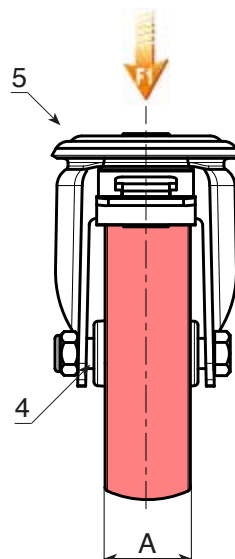
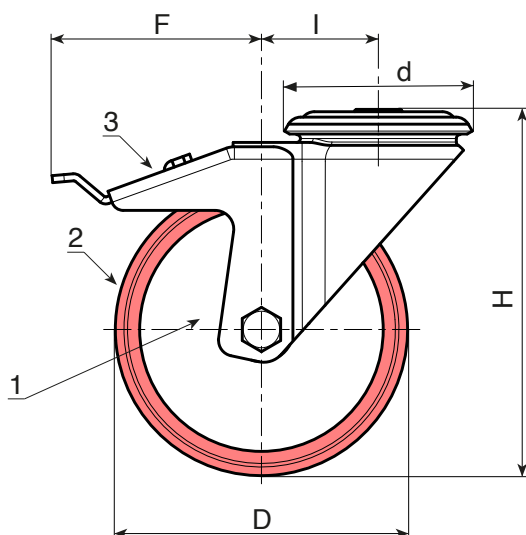
Steel rotating assembly with double ball race and smooth fixing hole, (hole tolerance H7).

### Wheel fastening (6):

Steel hex head screw, coupled with a steel nut.

### Special requests:

- Upon request and for a minimum of 20 pieces, the wheel can be supplied with a needle roller cage, (replace code no. R202 with code no. R232).



art.	D	A	H	I	d	F	d1H7	g	F1 (Kg)
R202080.T30D12	80	30	108	32	64	110	12	617	100
R202100.T30D12	100	30	127	32	64	110	12	664	130
R202125.T35D12	125	35	155	32	64	113	12	978	130
R202150.T40D12	150	40	184	35	65	115	12	-	140
R202200.T50D16	200	50	240	48	95	150	16	-	270

# R201CIN NEW



## POLYAMIDE / POLYURETHANE WHEEL WITH ROUND STAINLESS STEEL SWIVEL SUPPORT AND SMOOTH THROUGH HOLE

INOX

### Materials:

#### Wheel body (1):

Polyamide. Resistant to oils and greases.

#### Tread (2):

Injected polyurethane. Hardness  $60 \pm 5$  Shore D.

#### Surface finish:

Smooth.

#### Colour:

(1) Natural white.

(2) Red (Ral 3013).

(3-4-5-6) Natural stainless steel.

#### Wheel rotation (4):

The hole for the pivot pin is formed by plastic moulding. A stainless steel (Aisi 304) tube is positioned between the stud and the hole for protection.

#### Bracket (3):

Stainless steel (Aisi 304) fork.

#### Rotating assembly (5):

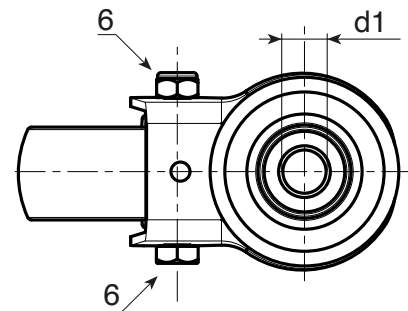
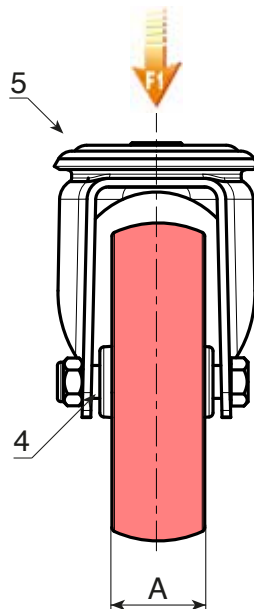
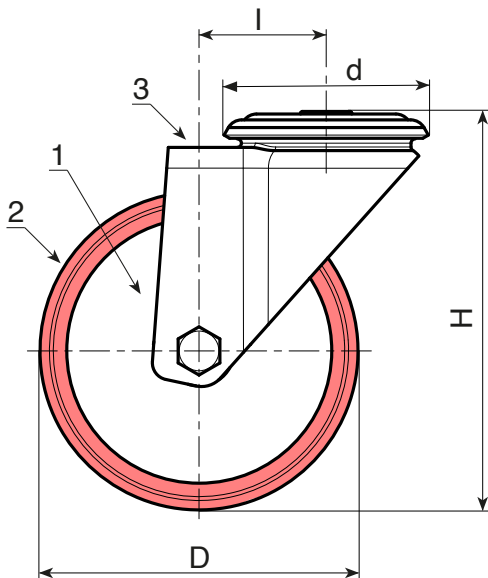
Stainless steel (Aisi 304) rotating assembly with double stainless steel (Aisi 420) ball race and smooth fixing hole, (hole tolerance H7).

#### Wheel fastening (6):

Stainless steel (Aisi 304) hex head bolt, coupled with a stainless steel (Aisi 304) nut.

#### Special requests:

- Upon request and for a minimum of 20 pieces, the wheel can be supplied with a needle roller cage, (replace code no. R201CIN with code no. R231CIN).



INOX

art.	D	A	H	I	d	d1H7	g	F1 (Kg)
R201080.T30D12CIN	80	30	108	32	64	12	486	100
R201100.T30D12CIN	100	30	127	32	64	12	544	130
R201125.T35D12CIN	125	35	155	32	64	12	654	130
R201150.T40D12CIN	150	40	184	35	65	12	-	140
R201200.T50D16CIN	200	50	240	48	95	16	-	300

# R202CIN



## POLYAMIDE / POLYURETHANE WHEEL WITH ROUND STAINLESS STEEL SWIVEL SUPPORT AND SMOOTH THROUGH HOLE - WITH BRAKE

INOX

### Materials:

#### Wheel body (1):

Polyamide. Resistant to oils and greases.

#### Tread (2):

Injected polyurethane. Hardness  $60 \pm 5$  Shore D.

#### Surface finish:

Smooth.

#### Colour:

(1) Natural white.

(2) Red (Ral 3013).

(3-4-5-6) Natural stainless steel.

#### Wheel rotation (4):

The hole for the pivot pin is formed by plastic moulding. A stainless steel (Aisi 304) tube is positioned between the stud and the hole for protection.

#### Bracket (3):

Stainless steel (Aisi 304) fork, with integrated brake.

#### Rotating assembly (5):

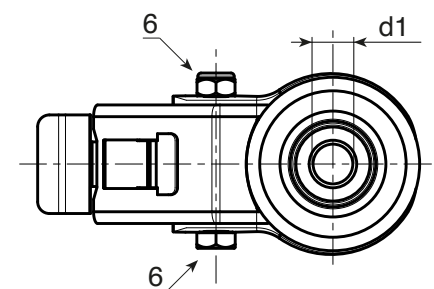
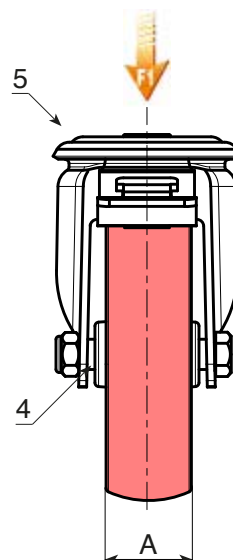
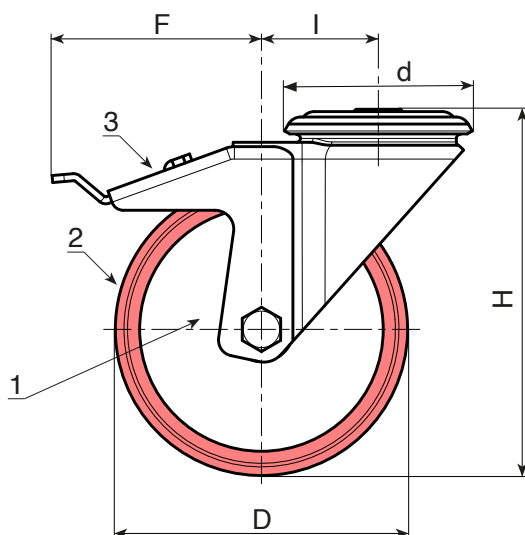
Stainless steel (Aisi 304) rotating assembly with double stainless steel (Aisi 420) ball race and smooth fixing hole, (hole tolerance H7).

#### Wheel fastening (6):

Stainless steel (Aisi 304) hex head bolt, coupled with a stainless steel (Aisi 304) nut.

#### Special requests:

- Upon request and for a minimum of 20 pieces, the wheel can be supplied with a needle roller cage, (replace code no. R202CIN with code no. R232CIN).



INOX

art.	D	A	H	I	d	F	d1H7	g	F1 (Kg)
R202080.T30D12CIN	80	30	108	32	64	110	12	626	100
R202100.T30D12CIN	100	30	127	32	64	110	12	728	130
R202125.T35D12CIN	125	35	155	32	64	113	12	796	130
R202150.T40D12CIN	150	40	184	35	65	115	12	-	140
R202200.T50D16CIN	200	50	240	48	95	150	16	2050	300

# R207

**NEW**

max  
4 Km/h

+60°  
-20°

PA6

PU

UL94  
HB

RoHS  
COMPLIANT

## POLYAMIDE / POLYURETHANE WHEEL WITH RECTANGULAR SWIVEL STEEL PLATE

### Materials:

#### Wheel body (1):

Polyamide. Resistant to oils and greases.

#### Tread (2):

Injected polyurethane. Hardness  $60 \pm 5$  Shore D.

#### Surface finish:

Smooth.

#### Colour:

(1) Natural white.

(2) Red (Ral 3013).

(3-4-5-6) Galvanised blue.

#### Wheel rotation (4):

The hole for the pivot pin is formed by plastic moulding. A galvanised steel tube is positioned between the stud and the hole for protection.

#### Bracket (3):

Steel fork (DD13).

#### Rotating assembly (5):

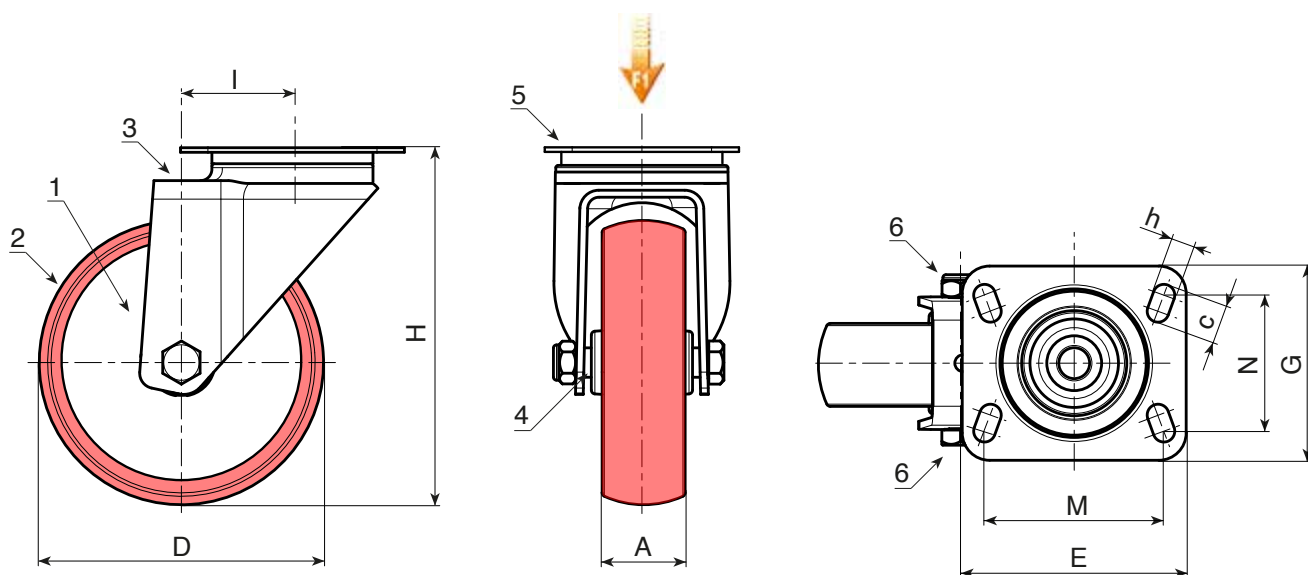
Steel rotating assembly with double ball race, and rectangular swivel plate with four slotted mounting holes.

#### Wheel fastening (6):

Steel hex head screw, coupled with a steel nut.

#### Special requests:

- Upon request and for a minimum of 20 pieces, the wheel can be supplied with a needle roller cage, (replace code no. R207 with code no. R237).



art.	D	A	H	I	E	G	M	N	c	h	g	F1 (Kg)
R207080.T30P080X060	80	30	108	32	95	80	80	60	12	9	587	100
R207100.T30P080X060	100	30	127	32	95	80	80	60	12	9	480	130
R207125.T35P080X060	125	35	155	32	95	80	80	60	12	9	790	130
R207150.T40P080X060	150	40	184	35	100	80	80	60	12	9	-	140
R207200.T50P105X080	200	50	240	48	129	106	105	80	23	11	1691	270

**BOTECO**  
**COMPONENTS**

582 ()

Stock availability as % (🛒)  
90% (●) - 40% (●) - 5% (●)



# R208

**NEW**



## POLYAMIDE / POLYURETHANE WHEEL WITH RECTANGULAR SWIVEL STEEL PLATE - WITH BRAKE

### Materials:

#### Wheel body (1):

Polyamide. Resistant to oils and greases.

#### Tread (2):

Injected polyurethane. Hardness  $60 \pm 5$  Shore D.

#### Surface finish:

Smooth.

#### Colour:

(1) Natural white.

(2) Red (Ral 3013).

(3-4-5-6) Galvanised blue.

#### Wheel rotation (4):

The hole for the pivot pin is formed by plastic moulding. A galvanised steel tube is positioned between the stud and the hole for protection.

#### Bracket (3):

Steel fork (DD13), with integrated brake.

#### Rotating assembly (5):

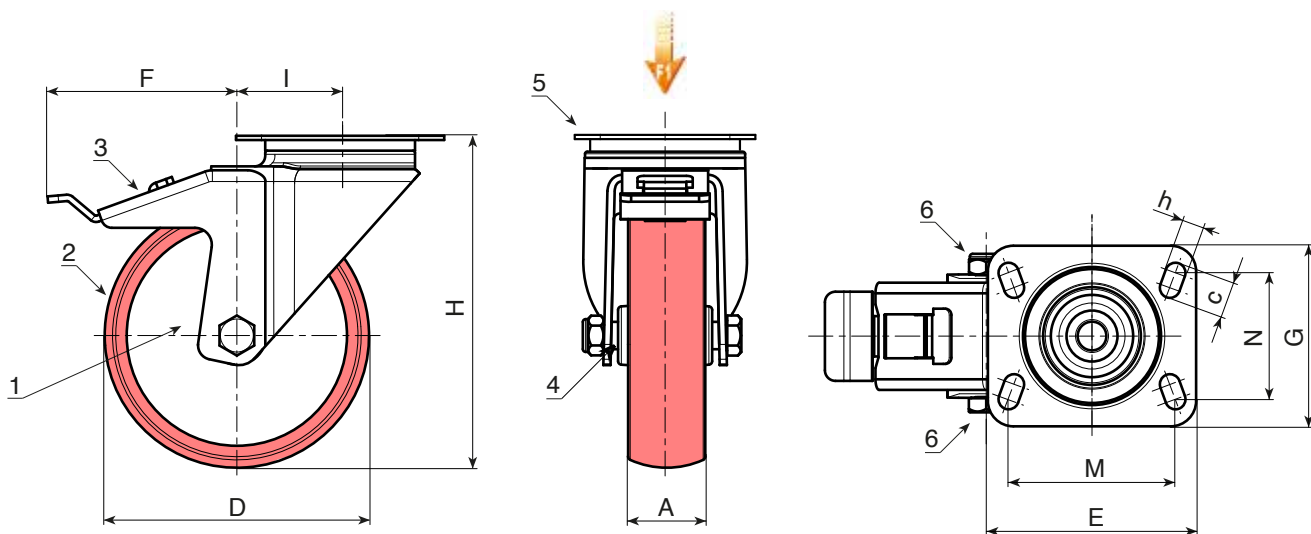
Steel rotating assembly with double ball race, and rectangular swivel plate with four slotted mounting holes.

#### Wheel fastening (6):

Steel hex head screw, coupled with a steel nut.

#### Special requests:

- Upon request and for a minimum of 20 pieces, the wheel can be supplied with a needle roller cage, (replace code no. R208 with code no. R238).



art.	D	A	H	I	E	G	M	N	c	h	F	g	F1 (Kg)
● R208080.T30P080X060	80	30	108	32	95	80	80	60	12	9	110	771	100
● R208100.T30P080X060	100	30	127	32	95	80	80	60	12	9	110	692	130
● R208125.T35P080X060	125	35	155	32	95	80	80	60	12	9	113	960	130
● R208150.T40P080X060	150	40	184	35	95	100	80	60	12	9	115	-	140
● R208200.T50P105X080	200	50	240	48	129	106	105	80	23	11	150	-	270

# R207CIN NEW



## POLYAMIDE / POLYURETHANE WHEEL WITH RECTANGULAR STAINLESS STEEL SWIVEL PLATE

INOX

### Materials:

#### Wheel body (1):

Polyamide. Resistant to oils and greases.

#### Tread (2):

Injected polyurethane. Hardness  $60 \pm 5$  Shore D.

#### Surface finish:

Smooth.

#### Colour:

(1) Natural white.

(2) Red (Ral 3013).

(3-4-5-6) Natural stainless steel.

#### Wheel rotation (4):

The hole for the pivot pin is formed by plastic moulding. A stainless steel (Aisi 304) tube is positioned between the stud and the hole for protection.

#### Bracket (3):

Stainless steel (Aisi 304) fork.

#### Rotating assembly (5):

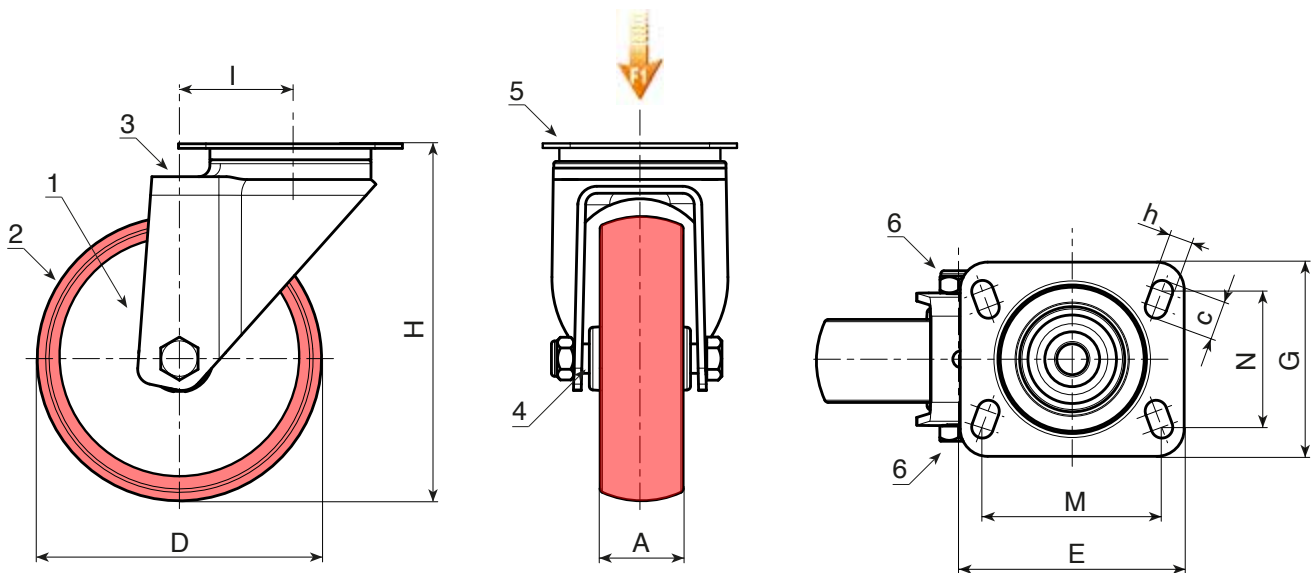
Stainless steel rotating assembly (Aisi 304) with double stainless steel (Aisi 420) ball race, and rectangular swivel plate with four slotted mounting holes.

#### Wheel fastening (6):

Stainless steel (Aisi 304) hex head bolt, coupled with a stainless steel (Aisi 304) nut.

#### Special requests:

- Upon request and for a minimum of 20 pieces, the wheel can be supplied with a needle roller cage, (replace code no. R207CIN with code no. R237CIN).



INOX

art.	D	A	H	I	E	G	M	N	c	h	g	F1 (Kg)
● R207080.T30P080X060CIN	80	30	108	32	95	80	80	60	12	9	444	100
● R207100.T30P080X060CIN	100	30	127	32	95	80	80	60	12	9	494	130
● R207125.T35P080X060CIN	125	35	155	32	95	80	80	60	12	9	610	130
● R207150.T40P080X060CIN	150	40	184	35	100	80	80	60	12	9	-	140
● R207200.T50P105X080CIN	200	50	240	48	129	106	105	80	23	11	2246	300

# R208CIN NEW



## POLYAMIDE / POLYURETHANE WHEEL WITH RECTANGULAR STAINLESS STEEL SWIVEL PLATE - WITH BRAKE

INOX

### Materials:

#### Wheel body (1):

Polyamide. Resistant to oils and greases.

#### Tread (2):

Injected polyurethane. Hardness  $60 \pm 5$  Shore D.

#### Surface finish:

Smooth.

#### Colour:

(1) Natural white.

(2) Red (Ral 3013).

(3-4-5-6) Natural stainless steel.

#### Wheel rotation (4):

The hole for the pivot pin is formed by plastic moulding. A stainless steel (Aisi 304) tube is positioned between the stud and the hole for protection.

#### Bracket (3):

Stainless steel (Aisi 304) fork, with integrated brake.

#### Rotating assembly (5):

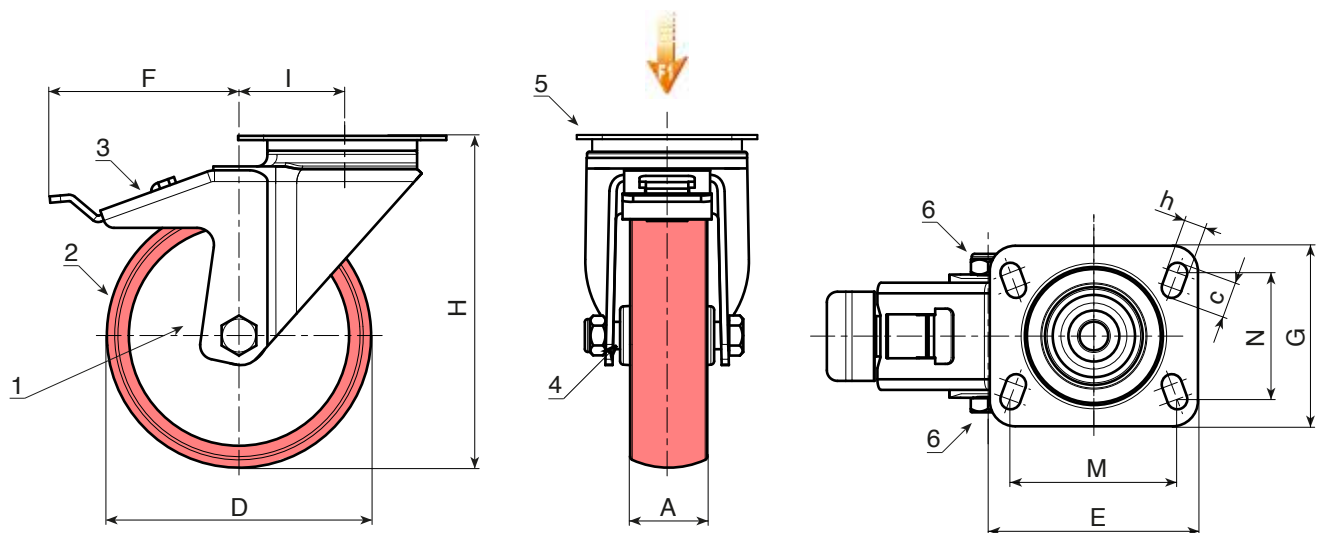
Stainless steel rotating assembly (Aisi 304) with double stainless steel (Aisi 420) ball race, and rectangular swivel plate with four slotted mounting holes.

#### Wheel fastening (6):

Stainless steel (Aisi 304) hex head bolt, coupled with a stainless steel (Aisi 304) nut.

#### Special requests:

- Upon request and for a minimum of 20 pieces, the wheel can be supplied with a needle roller cage, (replace code no. R208CIN with code no. R238CIN).



INOX

art.	D	A	H	I	E	G	M	N	c	h	F	g	F1 (Kg)
● R208080.T30P080X060CIN	80	30	108	32	95	80	80	60	12	9	110	558	100
● R208100.T30P080X060CIN	100	30	127	32	95	80	80	60	12	9	110	616	130
● R208125.T35P080X060CIN	125	35	155	32	95	80	80	60	12	9	113	760	130
● R208150.T40P080X060CIN	150	40	184	35	95	100	80	60	12	9	115	-	140
● R208200.T50P105X080CIN	200	50	240	48	129	106	105	80	23	11	150	2602	300

# R209

**NEW**



## POLYAMIDE / POLYURETHANE WHEEL WITH RIGID STEEL FORK

### Materials:

#### Wheel body (1):

Polyamide. Resistant to oils and greases.

#### Tread (2):

Injected polyurethane. Hardness  $60 \pm 5$  Shore D.

#### Surface finish:

Smooth.

#### Colour:

- (1) Natural white.
- (2) Red (Ral 3013).
- (3-4-6) Galvanised blue.

#### Wheel rotation (4):

The hole for the pivot pin is formed by plastic moulding. A galvanised steel tube is positioned between the stud and the hole for protection.

#### Bracket (3):

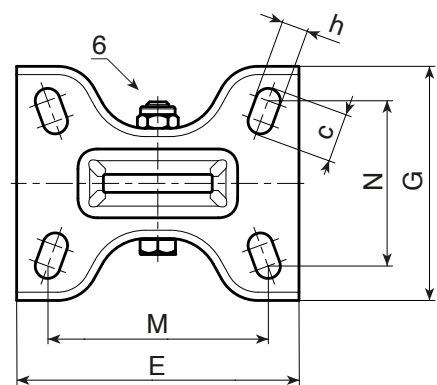
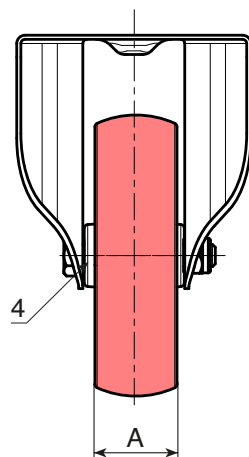
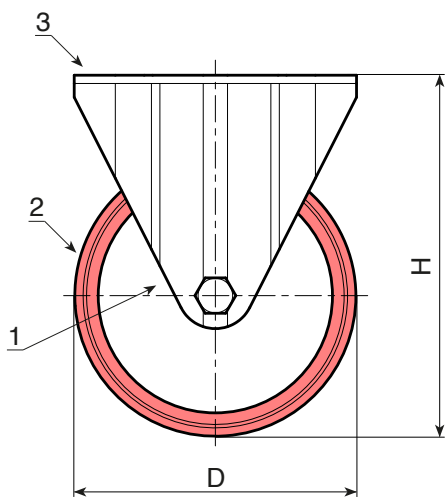
Rigid steel (DD13) fork, with mounting holes in the base.

#### Wheel fastening (6):

Steel hex head screw, coupled with a steel nut.

#### Special requests:

- Upon request and for a minimum of 20 pieces, the wheel can be supplied with a needle roller cage, (replace code no. R209 with code no. R239).



art.	D	A	H	E	G	M	N	c	h	g	F1 (Kg)
R209080.T30P080X060	80	30	108	100	84	80	60	12	9	379	100
R209100.T30P080X060	100	30	127	100	84	80	60	12	9	436	130
R209125.T35P080X060	125	35	155	100	84	80	60	12	9	685	180
R209150.T40P080X060	150	40	184	100	84	80	60	12	9	577	140
R209200.T50P105X080	200	50	240	135	110	105	80	23	11	1686	300

# R209CIN NEW



## POLYAMIDE / POLYURETHANE WHEEL WITH RIGID STAINLESS STEEL FORK

INOX

### Materials:

#### Wheel body (1):

Polyamide. Resistant to oils and greases.

#### Tread (2):

Injected polyurethane. Hardness  $60 \pm 5$  Shore D.

#### Surface finish:

Smooth.

#### Colour:

(1) Natural white.

(2) Red (Ral 3013).

(3-4-6) Natural stainless steel.

#### Wheel rotation (4):

The hole for the pivot pin is formed by plastic moulding. A stainless steel (Aisi 304) tube is positioned between the stud and the hole for protection.

#### Bracket (3):

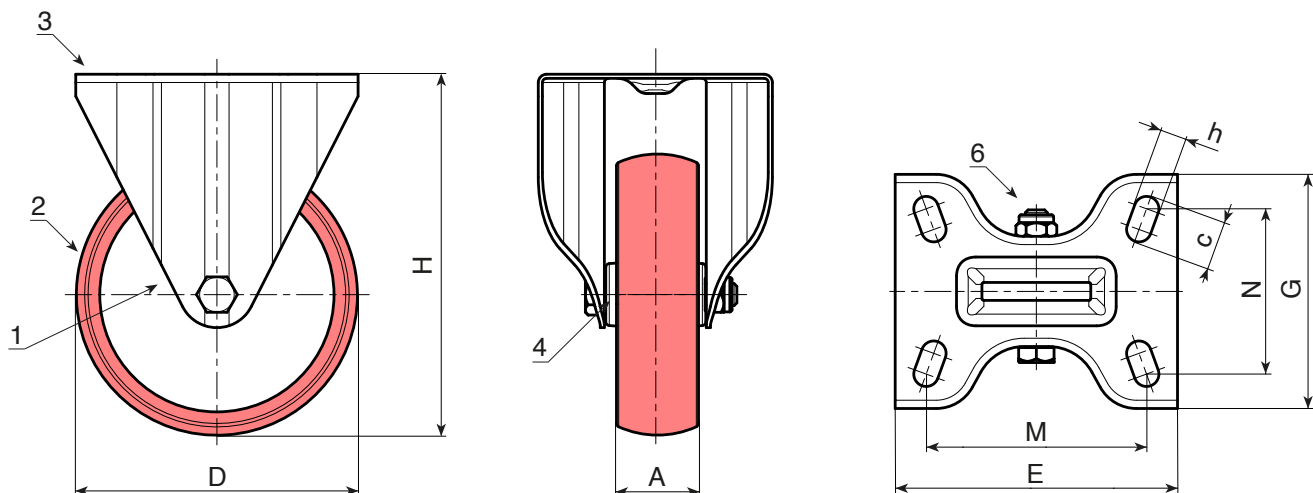
Rigid stainless steel (Aisi 304) fork, with mounting holes in the base.

#### Wheel fastening (6):

Stainless steel (Aisi 304) hex head bolt, coupled with a stainless steel (Aisi 304) nut.

#### Special requests:

- Upon request and for a minimum of 20 pieces, the wheel can be supplied with a needle roller cage, (replace code no. R209CIN with code no. R239CIN).



INOX

art.	D	A	H	E	G	M	N	c	h	g	F1 (Kg)
● R209080.T30P080X060CIN	80	30	108	100	84	80	60	12	9	379	100
● R209100.T30P080X060CIN	100	30	127	100	84	80	60	12	9	394	130
● R209125.T35P080X060CIN	125	35	155	100	84	80	60	12	9	550	180
● R209150.T40P080X060CIN	150	40	184	100	84	80	60	12	9	529	140
● R209200.T50P105X080CIN	200	50	240	135	110	105	80	23	11	1686	300

# R250

**NEW**



## WHEEL WITH POLYAMIDE BODY AND INJECTED POLYURETHANE TREAD WITH BALL BEARINGS WITHOUT RIG (HEAVY DUTY SERIES)

### Materials:

#### Wheel body:

Polyamide. Resistant to oils and greases.

#### Tread:

Injected polyurethane. Hardness  $60 \pm 5$  Shore D.

#### Surface finish:

Smooth.

#### Colour:

##### Body:

Natural white.

##### Tread:

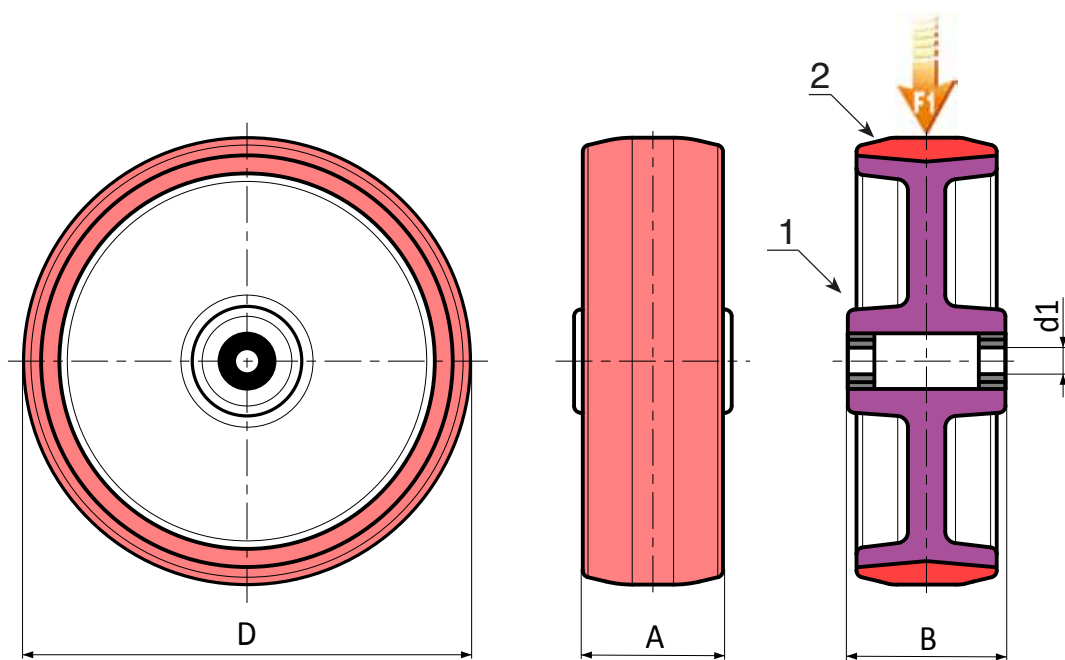
Red (Ral 3013).

#### Wheel rotation:

(1) A pair of steel ball bearings is inserted in the wheel hub to provide excellent rollability under a heavy load.

#### Special requests:

- Upon request and for a minimum of 20 pieces, the wheel can be supplied with a needle roller cage, (replace code no. R250 with code no. R240).



art.	D	A	B	d1	g	F1 (Kg)
R250080.T34D12	80	34	40	12	-	260
R250100.T40D15	100	40	44	15	-	300
R250125.T40D15	125	40	45	15	-	400
R250150.T45D20	150	45	58	20	-	600
R250200.T50D20	200	50	58	20	-	750

# R257

**NEW**



## POLYAMIDE / POLYURETHANE WHEEL WITH RECTANGULAR SWIVEL PLATE AND STEEL BEARINGS (HEAVY DUTY SERIES)

### Materials:

#### Wheel body (1):

Polyamide. Resistant to oils and greases.

#### Tread (2):

Injected polyurethane. Hardness  $60 \pm 5$  Shore D.

#### Surface finish:

Smooth.

#### Colour:

(1) Natural white.

(2) Red (Ral 3013).

(3-4-5-6) Galvanised blue.

#### Wheel rotation (4):

A pair of steel ball bearings is inserted in the wheel hub to provide excellent rollability.

#### Bracket (3):

Extra-thick steel (DD13) fork.

#### Rotating assembly (5):

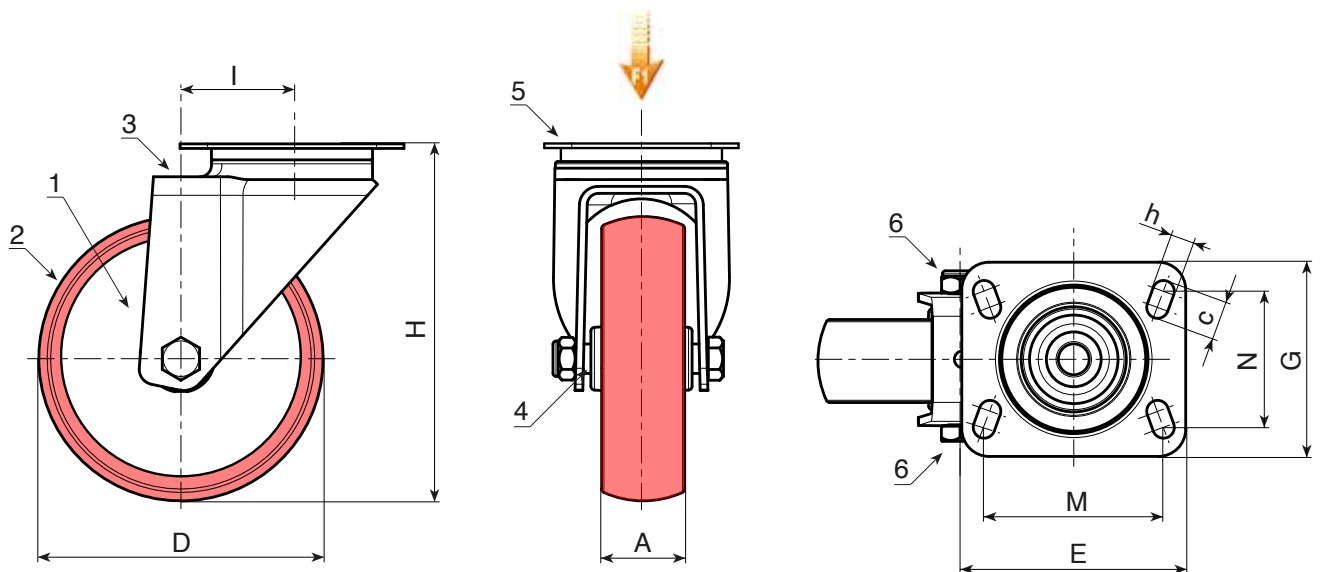
Steel rotating assembly with double ball race, assembled with steel screw grade 8.8 and rectangular swivel plate with four slotted mounting holes.

#### Wheel fastening (6):

Steel hex head screw, coupled with a self-locking steel nut.

#### Special requests:

- Upon request and for a minimum of 20 pieces, the wheel can be supplied with a needle roller cage, (replace code no. R257 with code no. R247).



	art.	D	A	H	I	E	G	M	N	c	h	g	F1 (Kg)
●	R257080.T34P080X060	80	34	125	47	100	84	80	60	12	9	-	260
●	R257100.T40P080X060	100	40	135	47	100	84	80	60	12	9	-	300
●	R257125.T40P080X060	125	40	161	51	100	84	80	60	12	9	-	400
●	R257150.T45P105X080	150	45	195	60	132	110	105	80	23	12	-	600
●	R257200.T50P105X080	200	50	242	59	132	110	105	80	23	12	-	700

# R258

**NEW**



## POLYAMIDE / POLYURETHANE WHEEL WITH RECTANGULAR SWIVEL STEEL PLATE WITH BRAKE AND BEARINGS (HEAVY DUTY SERIES)

### Materials:

#### Wheel body (1):

Polyamide. Resistant to oils and greases.

#### Tread (2):

Injected polyurethane. Hardness 60 ± 5 Shore D.

### Surface finish:

Smooth.

### Colour:

(1) Natural white.

(2) Red (Ral 3013).

(3-4-5-6) Galvanised blue.

### Wheel rotation (4):

A pair of steel ball bearings is inserted in the wheel hub to provide excellent rollability.

### Bracket (3):

Extra-thick steel (DD13) fork, with integrated brake.

### Rotating assembly (5):

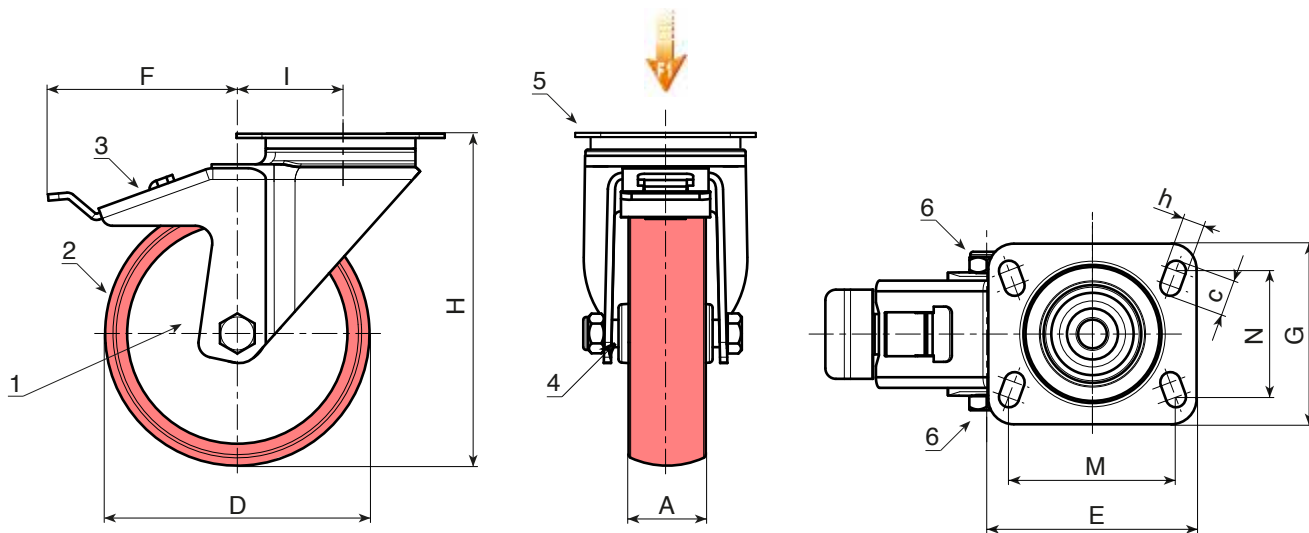
Steel rotating assembly with double ball race, assembled with steel screw grade 8.8 and rectangular swivel plate with four slotted mounting holes.

### Wheel fastening (6):

Steel hex head screw, coupled with a self-locking steel nut.

### Special requests:

- Upon request and for a minimum of 20 pieces, the wheel can be supplied with a needle roller cage, (replace code no. R258 with code no. R248).



art.	D	A	H	I	E	G	M	N	c	h	F	g	F1 (Kg)
R258080.T34P080X060	80	34	125	47	100	84	80	60	12	9	113	-	260
R258100.T40P080X060	100	40	135	47	100	84	80	60	12	9	114	-	300
R258125.T40P080X060	125	40	161	51	100	84	80	60	12	9	128	-	400
R258150.T45P105X080	150	45	195	60	132	110	105	80	23	12	157	-	600
R258200.T50P105X080	200	50	242	59	132	110	105	80	23	12	158	-	700



# R259

**NEW**



## POLYAMIDE / POLYURETHANE WHEEL WITH RIGID STEEL FORK AND STEEL BEARINGS (HEAVY DUTY SERIES)

### Materials:

#### Wheel body (1):

Polyamide. Resistant to oils and greases.

#### Tread (2):

Injected polyurethane. Hardness  $60 \pm 5$  Shore D.

#### Surface finish:

Smooth.

#### Colour:

(1) Natural white.

(2) Red (Ral 3013).

(3-4-5-6) Galvanised blue.

#### Wheel rotation (4):

A pair of steel ball bearings is inserted in the wheel hub to provide excellent rollability.

#### Bracket (3):

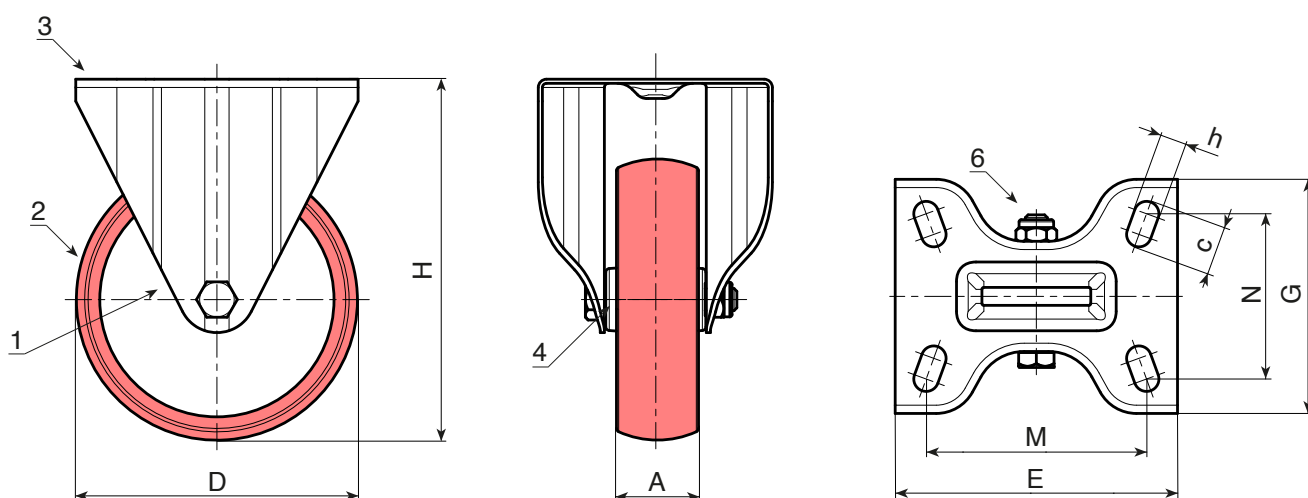
Extra-thick steel (DD13) fork, with mounting holes in the base.

#### Wheel fastening (6):

Steel hex head screw, coupled with a self-locking steel nut.

#### Special requests:

- Upon request and for a minimum of 20 pieces, the wheel can be supplied with a needle roller cage, (replace code no. R259 with code no. R249).



	art.	D	A	H	E	G	M	N	c	h	g	F1 (Kg)
●	R259080.T34P080X060	80	34	125	100	88	80	60	12	9	-	260
●	R259100.T40P080X060	100	40	135	100	88	80	60	12	9	-	300
●	R259125.T40P080X060	125	40	161	100	88	80	60	12	9	-	400
●	R259150.T45P105X080	150	45	195	134	114	105	80	23	12	-	600
●	R259200.T50P105X080	200	50	242	134	114	105	80	23	12	-	700

# R270

NEW



**\*\*non tradotto\*\***

## Materials:

### Wheel body:

**\*\*non tradotto\*\***

### Tread:

**\*\*non tradotto\*\***

## Surface finish:

Smooth.

## Colour:

### Body:

**\*\*non tradotto\*\***

### Tread:

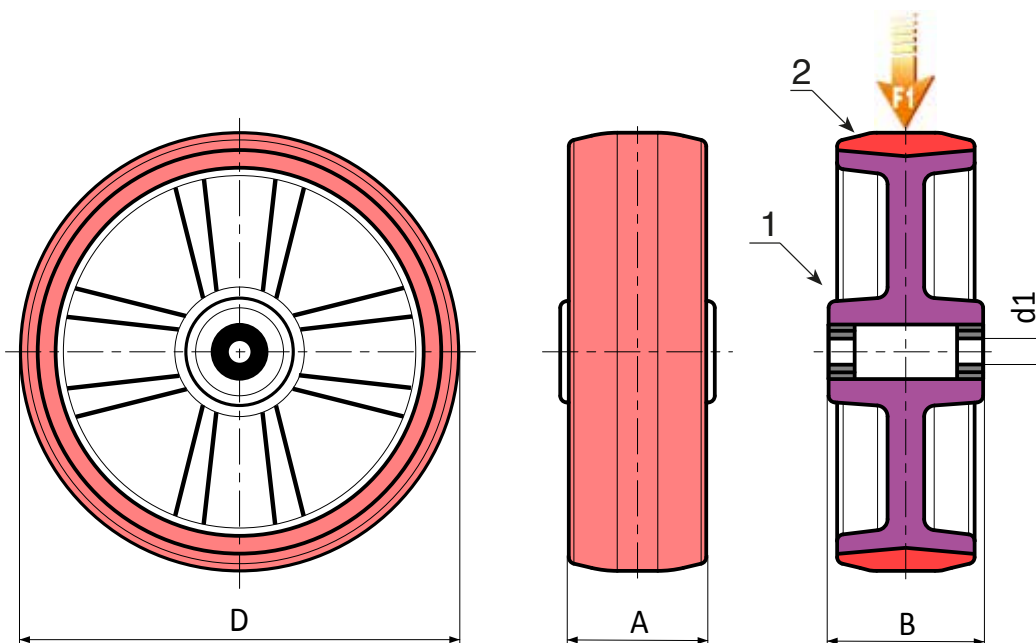
**\*\*non tradotto\*\***

## Wheel rotation:

(1) A pair of steel ball bearings is inserted in the wheel hub to provide excellent rollability under a heavy load.

## Special requests:

- None.



art.	D	A	B	d1	g	F1 (Kg)
R270080.T25D12	80	25	30	12	-	150
R270100.T30D15	100	30	30	15	-	200
R270125.T30D15	125	30	40	15	-	250
R270150.T40D17	150	40	45	17	-	400
R270200.T50D25	200	50	60	25	-	750

# R277

**NEW**

max  
4 Km/h

+60°  
-20°

Al

PU

UL94  
HB

RoHS  
COMPLIANT

**\*\*non tradotto\*\***

**Materials:**

**Wheel body (1):**

**\*\*non tradotto\*\***

**Tread (2):**

**\*\*non tradotto\*\***

**Surface finish:**

Smooth.

**Colour:**

**\*\*non tradotto\*\***

**\*\*non tradotto\*\***

(3-4-5-6) Galvanised blue.

**Wheel rotation (4):**

A pair of steel ball bearings is inserted in the wheel hub to provide excellent rollability.

**Bracket (3):**

Extra-thick steel (DD13) fork.

**Rotating assembly (5):**

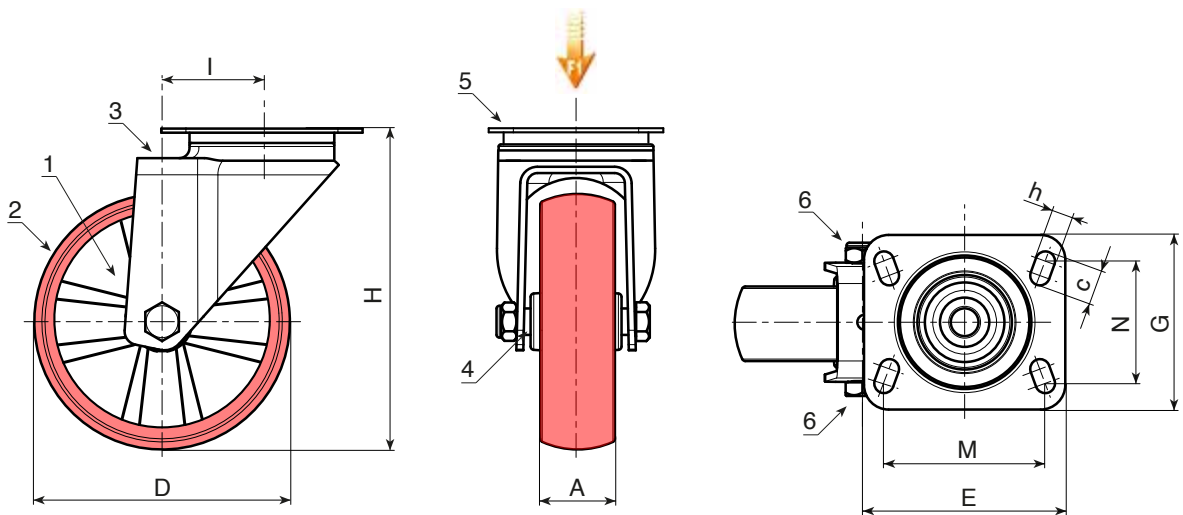
Steel rotating assembly with double ball race, assembled with steel screw grade 8.8 and rectangular swivel plate with four slotted mounting holes.

**Wheel fastening (6):**

Steel hex head screw, coupled with a self-locking steel nut.

**Special requests:**

- None.



art.	D	A	H	I	E	G	M	N	c	h	g	F1 (Kg)
R277080.T25P080X060	80	25	108	32	100	80	80	60	12	9	-	150
R277100.T30P080X060	100	30	127	33	100	80	80	60	12	9	-	180
R277125.T30P080X060	125	30	155	39	100	80	80	60	12	9	-	180
R277150.T40P105X080	150	40	186	47	133	106	105	80	23	11	-	300
R277200.T50P105X080	200	50	240	56	132	110	105	80	23	12	-	300

# R278

**NEW**



**\*\*non tradotto\*\***

**Materials:**

**Wheel body (1):**

**\*\*non tradotto\*\***

**Tread (2):**

**\*\*non tradotto\*\***

**Surface finish:**

Smooth.

**Colour:**

**\*\*non tradotto\*\***

**\*\*non tradotto\*\***

(3-4-5-6) Galvanised blue.

**Wheel rotation (4):**

A pair of steel ball bearings is inserted in the wheel hub to provide excellent rollability.

**Bracket (3):**

Extra-thick steel (DD13) fork, with integrated brake.

**Rotating assembly (5):**

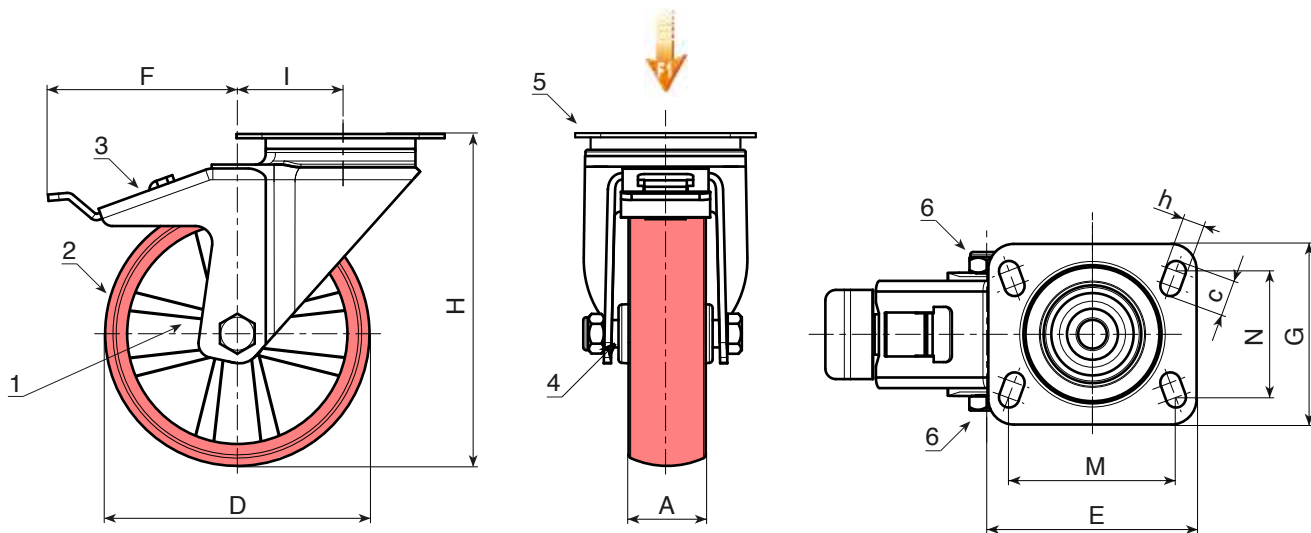
Steel rotating assembly with double ball race, assembled with steel screw grade 8.8 and rectangular swivel plate with four slotted mounting holes.

**Wheel fastening (6):**

Steel hex head screw, coupled with a self-locking steel nut.

**Special requests:**

- None.



art.	D	A	H	I	E	G	M	N	c	h	F	g	F1 (Kg)
R278080.T25P080X060	80	25	108	32	100	84	80	60	12	9	114	-	150
R278100.T30P080X060	100	30	127	33	100	80	80	60	12	9	117	-	180
R278125.T30P080X060	125	30	155	39	100	80	80	60	12	9	123	-	180
R278150.T40P105X080	150	40	186	47	133	106	105	80	23	12	144	-	300
R278200.T50P105X080	200	50	240	56	132	110	105	80	23	12	157	-	300

# R279

**NEW**



**\*\*non tradotto\*\***

**Materials:**

**Wheel body (1):**

**\*\*non tradotto\*\***

**Tread (2):**

**\*\*non tradotto\*\***

**Surface finish:**

Smooth.

**Colour:**

**\*\*non tradotto\*\***

**\*\*non tradotto\*\***

(3-4-5-6) Galvanised blue.

**Wheel rotation (4):**

A pair of steel ball bearings is inserted in the wheel hub to provide excellent rollability.

**Bracket (3):**

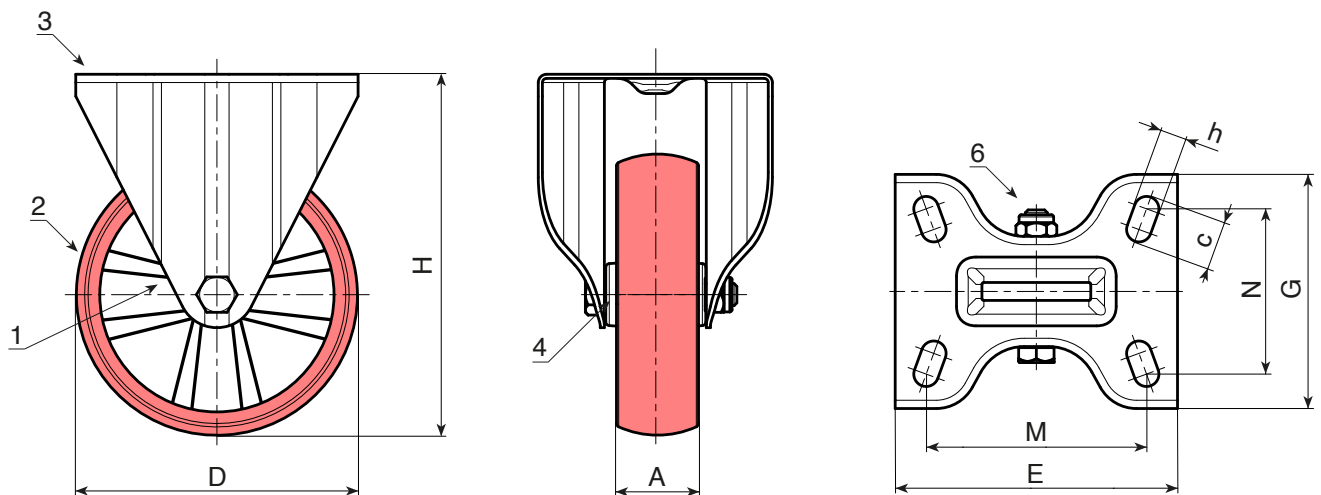
Extra-thick steel (DD13) fork, with mounting holes in the base.

**Wheel fastening (6):**

Steel hex head screw, coupled with a self-locking steel nut.

**Special requests:**

- None.



art.	D	A	H	E	G	M	N	c	h	g	F1 (Kg)
R279080.T25P080X060	80	25	108	100	84	80	60	12	9	-	150
R279100.T30P080X060	100	30	127	100	84	80	60	12	9	-	180
R279125.T30P080X060	125	30	155	100	84	80	60	12	9	-	180
R279150.T40P105X080	150	40	184	134	110	105	80	23	11	-	220
R279200.T50P105X080	200	50	240	135	110	105	80	23	11	-	300

# R300

NEW



NR

DD13

UL94  
HB



## WHEEL WITH SHEET METAL RIM AND RUBBER TREAD (WITHOUT RIG)

### Materials:

#### Wheel body:

Two stamped sheet metal disks (steel DD13) riveted together to create a single body.

#### Tread:

Natural rubber trapezoidal tread. Hardness  $85 \pm 4$  Shore A.

#### Surface finish:

Smooth.

#### Colour:

##### Body:

Galvanised blue.

##### Tread:

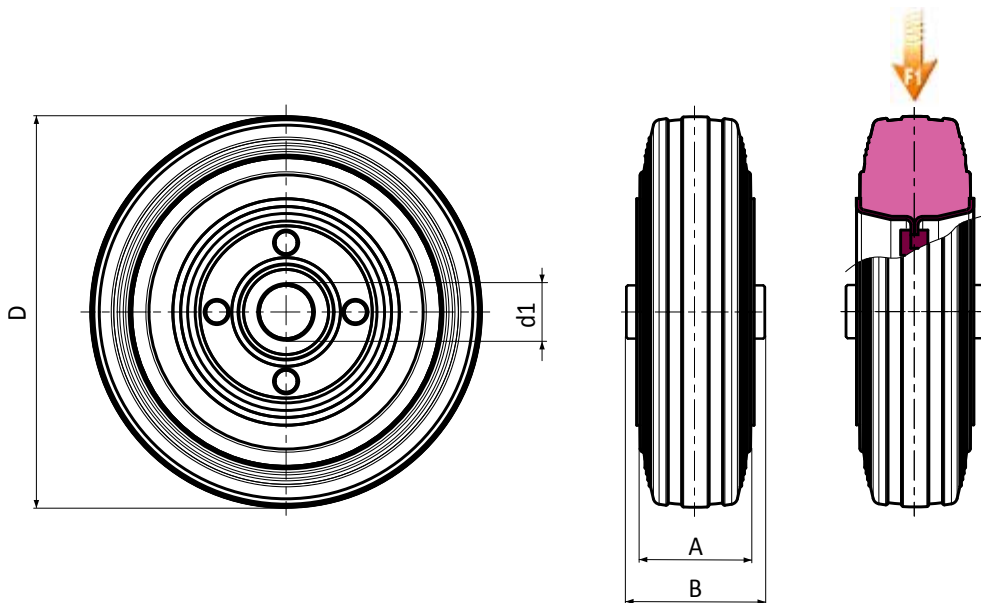
Black (Ral 9011).

#### Wheel rotation:

The hole for the pivot pin is stamped in sheet metal. A black polyamide insert is positioned between the pin and the hole for protection.

#### Special requests:

- Upon request and for a minimum of 20 pieces, the wheel can be supplied with a needle roller cage, (replace code no. R300 with code no. R330).



	art.	D	A	B	d1	g	F1 (Kg)
●	R300080.T25D12	80	25	39	12	-	50
●	R300100.T30D12	100	30	39	12	-	70
●	R300125.T37D15	125	37.5	44	15	-	110
●	R300140.T37D15	140	37.5	44	15	-	140
●	R300150.T37D15	150	37.5	44	15	-	140
●	R300160.T40D20	160	40	45	20	-	160
●	R300180.T45D20	180	45	58	20	-	180
●	R300200.T50D20	200	50	58	20	-	220

# R301

**NEW**



## SHEET METAL RIM / RUBBER WHEEL WITH ROUND STEEL SWIVEL SUPPORT AND SMOOTH THROUGH HOLE

### Materials:

#### Wheel body:

Two stamped sheet metal disks (steel DD13) riveted together to create a single body.

#### Tread:

Natural rubber trapezoidal tread. Hardness  $85 \pm 4$  Shore A.

#### Surface finish:

Smooth.

#### Colour:

(2) Black (RAL 9011).

(1-3-4-5-6) Galvanised blue.

#### Wheel rotation:

The hole for the pivot pin is stamped in sheet metal. A black polyamide insert is positioned between the pin and the hole for protection.

#### Bracket (3):

Steel fork (DD13).

#### Rotating assembly (5):

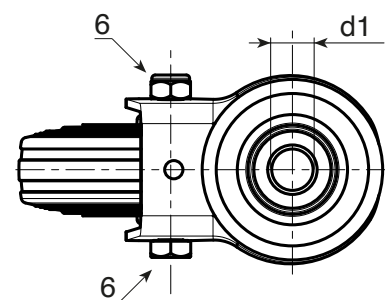
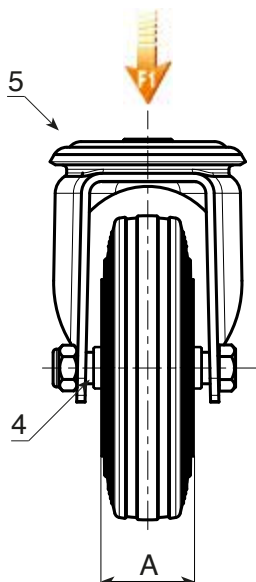
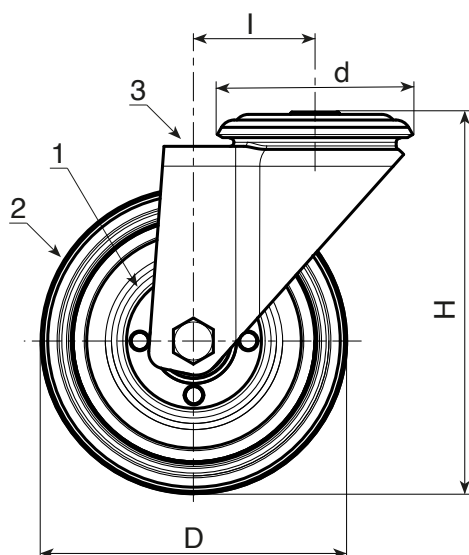
Steel rotating assembly with double ball race and smooth fixing hole, (hole tolerance H7).

#### Wheel fastening (6):

Steel hex head screw, coupled with a steel nut.

#### Special requests:

- Upon request and for a minimum of 20 pieces, the wheel can be supplied with a needle roller cage, (replace code no. R301 with code no. R331).



art.	D	A	H	l	d	d1H7	g	F1 (Kg)
R301080.T25D12	80	25	108	32	64	12	550	50
R301100.T30D12	100	30	127	32	64	12	672	70
R301125.T37D12	125	37.5	155	32	64	12	741	100
R301150.T37D12	150	37.5	183	35	65	12	-	140
R301180.T45D16	180	45	230	48	95	16	-	180
R301200.T50D16	200	50	240	48	95	16	2919	200

# R302

**NEW**



## SHEET METAL RIM / RUBBER WHEEL WITH ROUND STEEL SWIVEL SUPPORT AND SMOOTH THROUGH HOLE WITH BRAKE

### Materials:

#### Wheel body:

Two stamped sheet metal disks (steel DD13) riveted together to create a single body.

#### Tread:

Natural rubber trapezoidal tread. Hardness  $85 \pm 4$  Shore A.

#### Surface finish:

Smooth.

#### Colour:

(2) Black (RAL 9011).

(1-3-4-5-6) Galvanised blue.

#### Wheel rotation:

The hole for the pivot pin is stamped in sheet metal. A black polyamide insert is positioned between the pin and the hole for protection.

#### Bracket (3):

Steel fork (DD13), with integrated brake.

#### Rotating assembly (5):

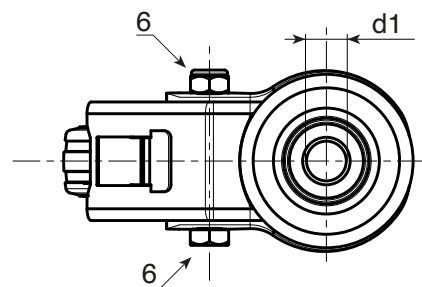
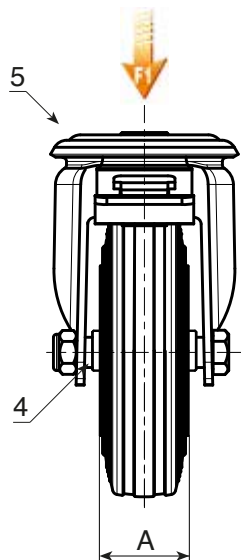
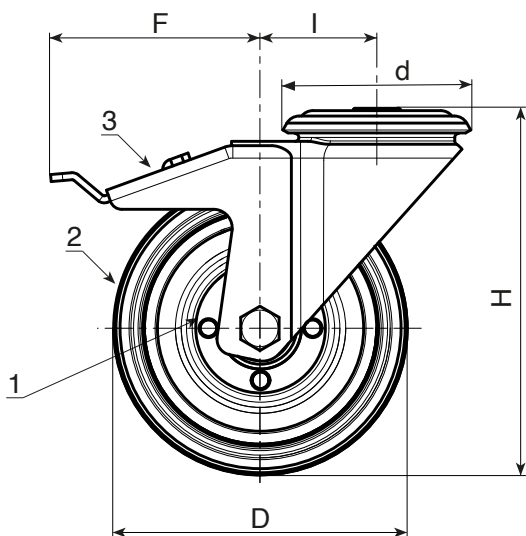
Steel rotating assembly with double ball race and smooth fixing hole, (hole tolerance H7).

#### Wheel fastening (6):

Steel hex head screw, coupled with a steel nut.

#### Special requests:

- Upon request and for a minimum of 20 pieces, the wheel can be supplied with a needle roller cage, (replace code no. R302 with code no. R332).



	art.	D	A	H	I	d	d1H7	F	g	F1 (Kg)
●	R302080.T25D12	80	25	108	32	64	12	110	570	50
●	R302100.T30D12	100	30	127	32	64	12	110	618	70
●	R302125.T37D12	125	37.5	155	32	64	12	113	1134	100
●	R302150.T37D12	150	37.5	183	35	65	12	115	-	140
●	R302180.T45D16	180	45	230	48	95	16	150	-	180
●	R302200.T50D16	200	50	240	48	95	16	150	3297	200



# R307

**NEW**



## SHEET METAL RIM / RUBBER WHEEL WITH RECTANGULAR SWIVEL STEEL PLATE

### Materials:

#### Wheel body:

Two stamped sheet metal disks (steel DD13) riveted together to create a single body.

#### Tread:

Natural rubber trapezoidal tread. Hardness  $85 \pm 4$  Shore A.

#### Surface finish:

Smooth.

#### Colour:

(2) Black (RAL 9011).

(1-3-4-5-6) Galvanised blue.

#### Wheel rotation:

The hole for the pivot pin is stamped in sheet metal. A black polyamide insert is positioned between the pin and the hole for protection.

#### Bracket (3):

Steel fork (DD13).

#### Rotating assembly (5):

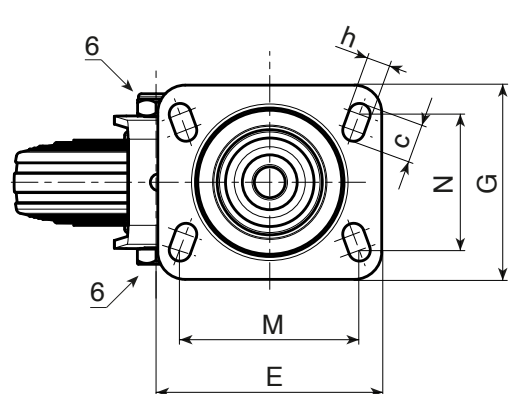
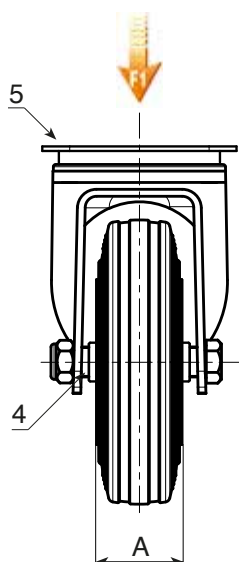
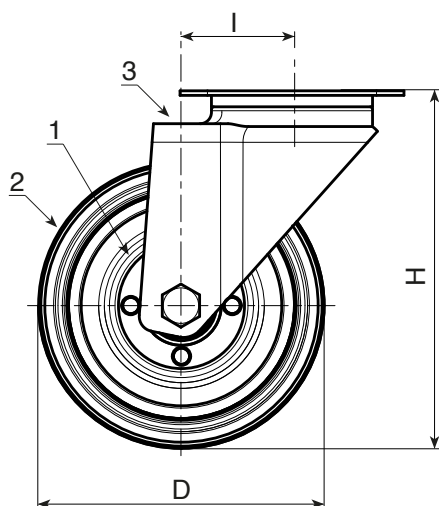
Steel rotating assembly with double ball race, and rectangular swivel plate with four slotted mounting holes.

#### Wheel fastening (6):

Steel hex head screw, coupled with a steel nut.

#### Special requests:

- Upon request and for a minimum of 20 pieces, the wheel can be supplied with a needle roller cage, (replace code no. R307 with code no. R337).



art.	D	A	H	I	E	G	M	N	c	h	g	F1 (Kg)
R307080.T25P080X060	80	25	108	32	95	80	80	60	12	9	550	50
R307100.T30P080X060	100	30	127	32	95	80	80	60	12	9	660	70
R307125.T37P080X060	125	37.5	155	32	95	80	80	60	12	9	968	100
R307150.T37P080X060	150	37.5	183	35	100	80	80	60	12	9	-	140
R307180.T45P105X080	180	45	230	48	129	106	105	80	23	11	2371	180
R307200.T50P105X080	200	50	240	48	129	106	105	80	23	11	2736	220

# R308

**NEW**



## SHEET METAL RIM / RUBBER WHEEL WITH RECTANGULAR SWIVEL STEEL PLATE WITH BRAKE

### Materials:

#### Wheel body:

Two stamped sheet metal disks (steel DD13) riveted together to create a single body.

#### Tread:

Natural rubber trapezoidal tread. Hardness 85 ± 4 Shore A.

#### Surface finish:

Smooth.

#### Colour:

(2) Black (RAL 9011).

(1-3-4-5-6) Galvanised blue.

#### Wheel rotation:

The hole for the pivot pin is stamped in sheet metal. A black polyamide insert is positioned between the pin and the hole for protection.

#### Bracket (3):

Steel fork (DD13), with integrated brake.

#### Rotating assembly (5):

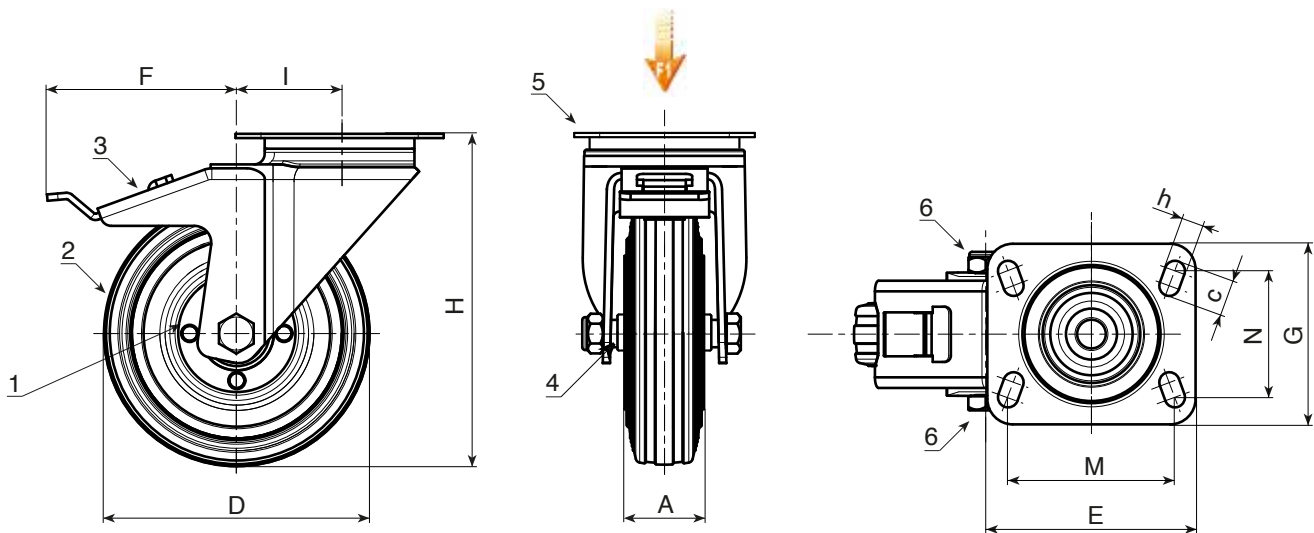
Steel rotating assembly with double ball race, and rectangular swivel plate with four slotted mounting holes.

#### Wheel fastening (6):

Steel hex head screw, coupled with a steel nut.

#### Special requests:

- Upon request and for a minimum of 20 pieces, the wheel can be supplied with a needle roller cage, (replace code no. R308 with code no. R338).



	art.	D	A	H	I	E	G	M	N	c	h	F	g	F1 (Kg)
●	R308080.T25P080X060	80	25	108	32	95	80	80	60	12	9	110	669	50
●	R308100.T30P080X060	100	30	127	32	95	80	80	60	12	9	110	782	70
●	R308125.T37P080X060	125	37.5	155	32	95	80	80	60	12	9	113	1086	100
●	R308150.T37P080X060	150	37.5	183	35	100	80	80	60	12	9	115	-	140
●	R308180.T45P105X080	180	45	230	48	129	106	105	80	23	11	150	3068	180
●	R308200.T50P105X080	200	50	240	48	129	106	105	80	23	11	150	2860	220

# R309

**NEW**



## SHEET METAL RIM / RUBBER WHEEL WITH RIGID STEEL FORK

### Materials:

#### Wheel body:

Two stamped sheet metal disks (steel DD13) riveted together to create a single body.

#### Tread:

Natural rubber trapezoidal tread. Hardness  $85 \pm 4$  Shore A.

#### Surface finish:

Smooth.

#### Colour:

(2) Black (RAL 9011).

(1-3-4-6) Galvanised blue.

#### Wheel rotation:

The hole for the pivot pin is stamped in sheet metal. A black polyamide insert is positioned between the pin and the hole for protection.

#### Bracket (3):

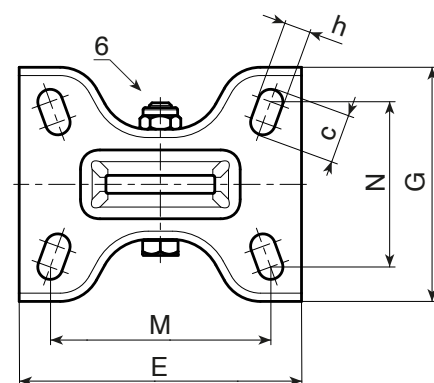
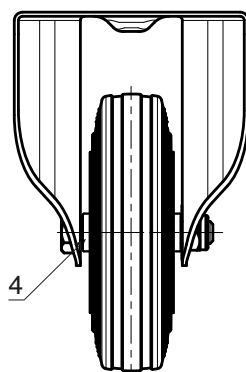
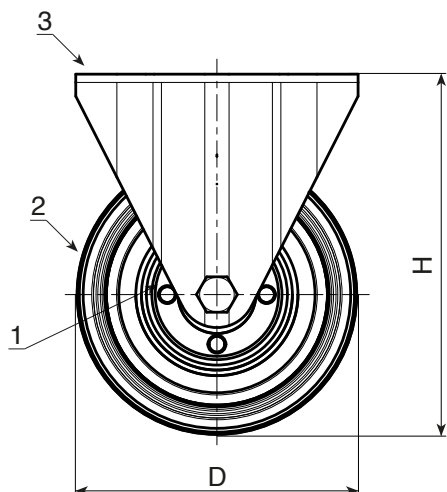
Steel (DD13) fork, with mounting holes in the base.

#### Wheel fastening (6):

Steel hex head screw, coupled with a steel nut.

#### Special requests:

- Upon request and for a minimum of 20 pieces, the wheel can be supplied with a needle roller cage, (replace code no. R309 with code no. R339).



art.	D	A	H	E	G	M	N	c	h	g	F1 (Kg)
R309080.T25P080X060	80	25	108	102	84	80	60	12	9	-	50
R309100.T30P080X060	100	30	127	102	84	80	60	12	9	-	70
R309125.T37P080X060	125	37.5	155	100	84	80	60	12	9	-	100
R309150.T37P080X060	150	37.5	183	100	84	80	60	12	9	-	140
R309180.T45P105X080	180	45	230	135	110	105	80	23	11	-	180
R309200.T50P105X080	200	50	240	135	110	105	80	23	11	-	220

# R400

**NEW**



## WHEEL WITH POLYPROPYLENE BODY AND THERMOPLASTIC RUBBER TREAD (WITHOUT RIG)

**Materials:**

**Wheel body:**

Polypropylene.

**Tread:**

Synthetic thermoplastic rubber. Hardness 93 ± 3 Shore A.

**Surface finish:**

Smooth.

**Colour:**

**Body:**

Black (Ral 9011).

**Tread:**

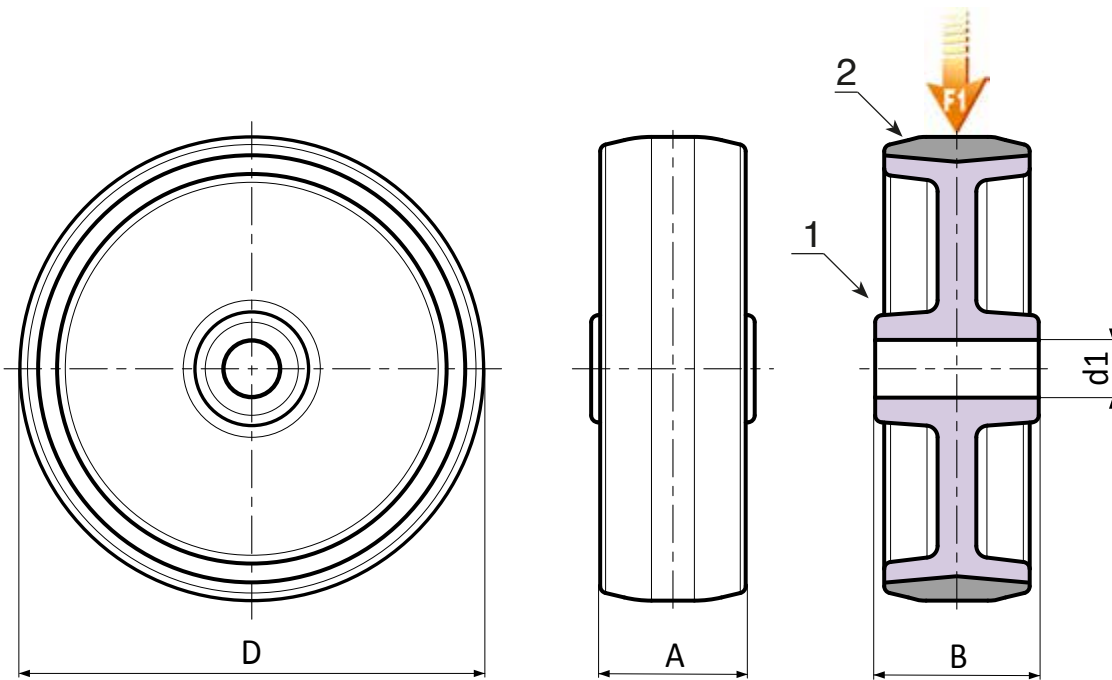
Light grey.

**Wheel rotation:**

The hole for the pivot pin is formed by plastic moulding.

**Special requests:**

- None.



art.	D	A	B	d1	g	F1 (Kg)
R400050.T18D08	50	18	22	8	-	40
R400063.T22D10	63	22	27	10	-	60
R400075.T24D08	75	24	27	8	-	60
R400080.T22D10	80	22	27	10	-	60
R400100.T27D12	100	27	32	12	-	80
R400125.T27D12	125	27	32	12	-	80

# R401

**NEW**



## POLYPROPYLENE / RUBBER WHEEL WITH ROUND STEEL SWIVEL SUPPORT AND SMOOTH THROUGH HOLE

### Materials:

#### Wheel body:

Polypropylene.

#### Tread:

Synthetic thermoplastic rubber. Hardness  $93 \pm 3$  Shore A.

#### Surface finish:

Smooth.

#### Colour:

(1) Black (RAL 9011).

(2) Light grey.

(3-4-5-6-7) Galvanised blue.

#### Wheel rotation (4):

The hole for the pivot pin is formed by plastic moulding. A galvanised steel tube is positioned between the stud and the hole for protection.

#### Bracket (3):

Steel fork (DD13).

#### Rotating assembly (5):

Steel rotating assembly with double ball race and smooth fixing hole, (hole tolerance H7).

#### Wheel fastening (6):

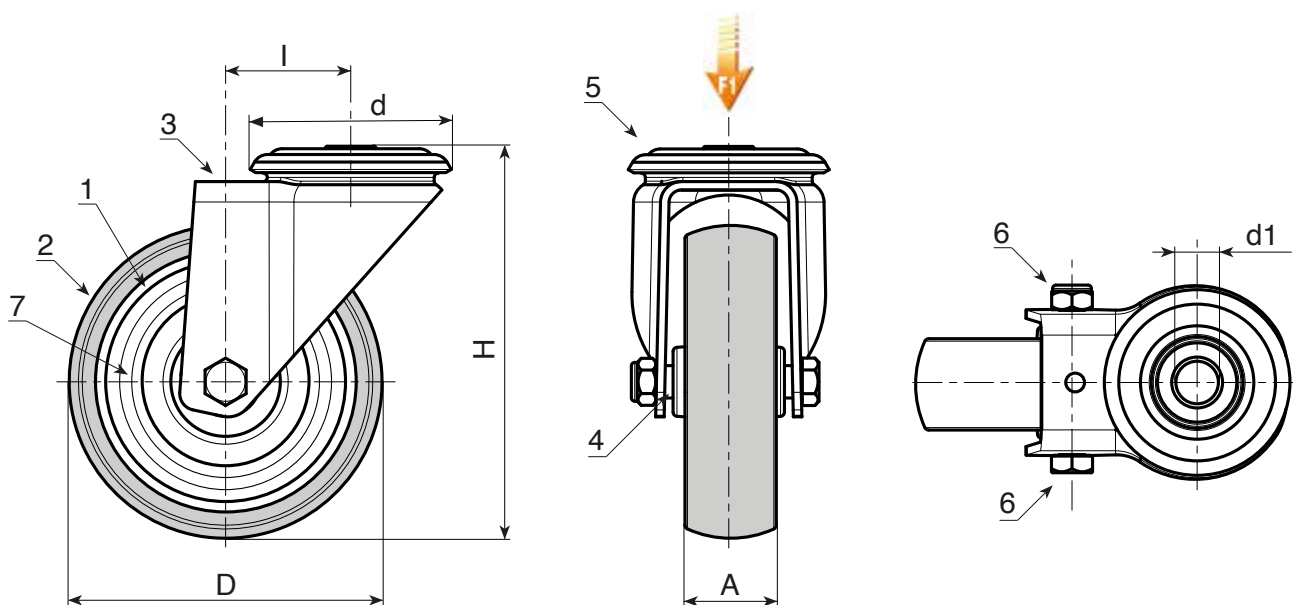
Steel hex head screw, coupled with a steel nut.

#### Thread guards (7):

Sheared steel thread guard disk fixed on both sides.

#### Special requests:

- None.



art.	D	A	H	I	d	d1H7	g	F1 (Kg)
R401050.T18D12	50	18	70	26	48	12	-	40
R401063.T22D12	63	22	90	26	48	12	-	60
R401080.T22D12	80	22	109	25	48	12	-	60
R401100.T27D12	100	27	134	36	57	12	-	80
R401125.T27D12	125	27	159	35	57	12	-	80

# R402

**NEW**



## POLYPROPYLENE / RUBBER WHEEL WITH ROUND STEEL SWIVEL SUPPORT AND SMOOTH THROUGH HOLE WITH BRAKE

### Materials:

#### Wheel body:

Polypropylene.

#### Tread:

Synthetic thermoplastic rubber. Hardness  $93 \pm 3$  Shore A.

#### Surface finish:

Smooth.

#### Colour:

(1) Black (RAL 9011).

(2) Light grey.

(3-4-5-6-7) Galvanised blue.

#### Wheel rotation (4):

The hole for the pivot pin is formed by plastic moulding. A galvanised steel tube is positioned between the stud and the hole for protection.

#### Bracket (3):

Steel fork (DD13), with integrated brake. Brake actuation lever moulded in grey plastic.

#### Rotating assembly (5):

Steel rotating assembly with double ball race and smooth fixing hole, (hole tolerance H7).

#### Wheel fastening (6):

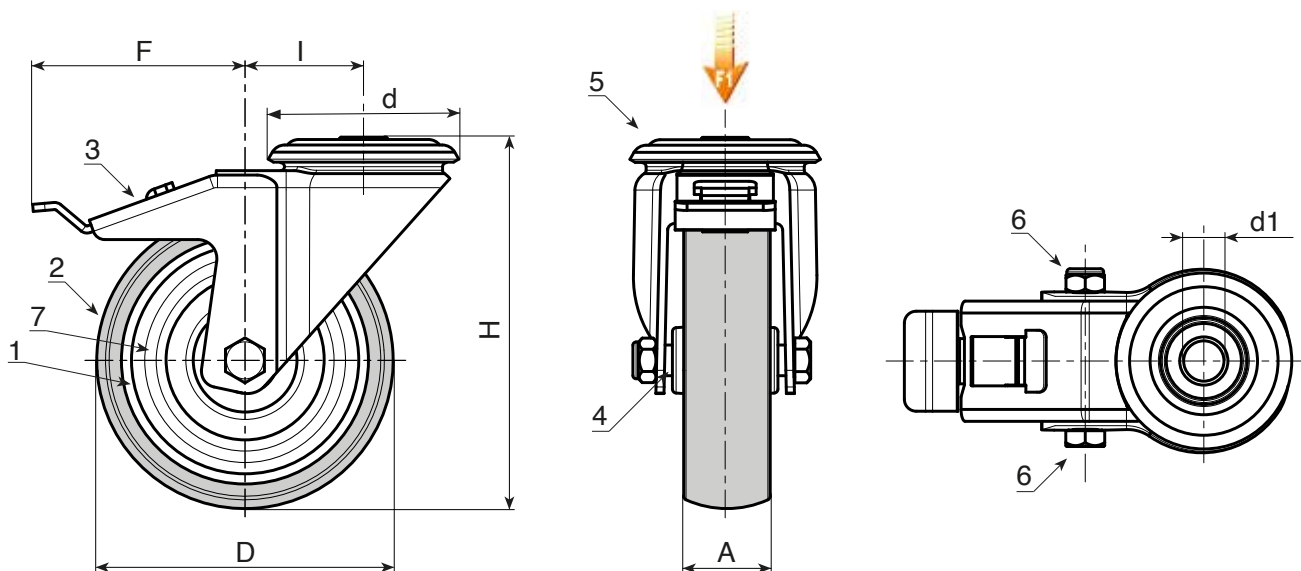
Steel hex head screw, coupled with a steel nut.

#### Thread guards (7):

Sheared steel thread guard disk fixed on both sides.

#### Special requests:

- None.



art.	D	A	H	I	d	F	d1H7	g	F1 (Kg)
R402050.T18D12	50	18	70	26	48	80	12	-	40
R402063.T22D12	63	22	90	26	48	84	12	-	60
R402080.T22D12	80	22	109	25	48	84	12	-	60
R402100.T27D12	100	27	134	36	57	106	12	-	80
R402125.T27D12	125	27	159	35	57	106	12	-	80

# R407

**NEW**



## POLYPROPYLENE / RUBBER WHEEL WITH RECTANGULAR SWIVEL STEEL PLATE

### Materials:

#### Wheel body:

Polypropylene.

#### Tread:

Synthetic thermoplastic rubber. Hardness  $93 \pm 3$  Shore A.

#### Surface finish:

Smooth.

#### Colour:

(1) Black (RAL 9011).

(2) Light grey.

(3-4-5-6-7) Galvanised blue.

#### Wheel rotation (4):

The hole for the pivot pin is formed by plastic moulding. A galvanised steel tube is positioned between the stud and the hole for protection.

#### Bracket (3):

Steel fork (DD13).

#### Rotating assembly (5):

Steel rotating assembly with double ball race, and rectangular swivel plate with four slotted mounting holes.

#### Wheel fastening (6):

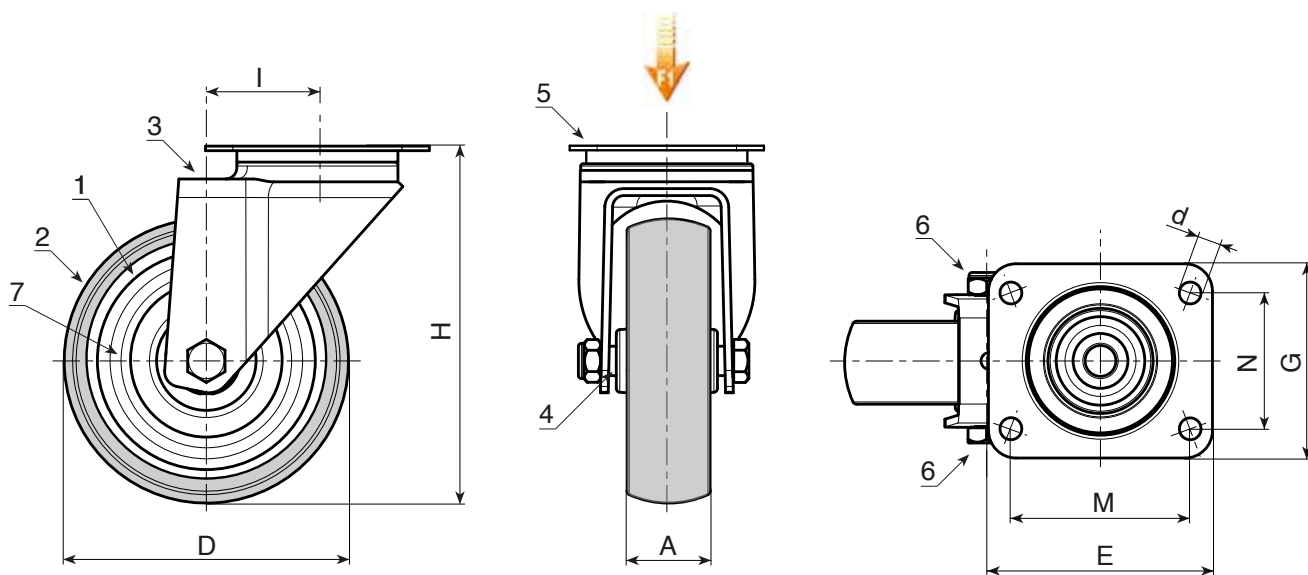
Steel hex head screw, coupled with a steel nut.

#### Thread guards (7):

Sheared steel thread guard disk fixed on both sides.

#### Special requests:

- None.



art.	D	A	H	I	E	G	M	N	d	g	F1 (Kg)
R407050.T18P045X045	50	18	70	26	60	60	45	45	6,5	-	40
R407063.T22P045X045	63	22	90	26	60	60	45	45	6,5	-	60
R407080.T22P045X045	80	22	109	25	60	60	45	45	6,5	-	60
R407100.T27P060X050	100	27	134	36	76	70	60	50	8,3	-	80
R407125.T27P060X050	125	27	159	35	76	70	60	50	8,3	-	80

# R408

**NEW**



## POLYPROPYLENE / RUBBER WHEEL WITH RECTANGULAR SWIVEL STEEL PLATE WITH BRAKE

### Materials:

#### Wheel body:

Polypropylene.

#### Tread:

Synthetic thermoplastic rubber. Hardness  $93 \pm 3$  Shore A.

#### Surface finish:

Smooth.

#### Colour:

(1) Black (RAL 9011).

(2) Light grey.

(3-4-5-6-7) Galvanised blue.

#### Wheel rotation (4):

The hole for the pivot pin is formed by plastic moulding. A galvanised steel tube is positioned between the stud and the hole for protection.

#### Bracket (3):

Steel fork (DD13), with integrated brake. Brake actuation lever moulded in grey plastic.

#### Rotating assembly (5):

Steel rotating assembly with double ball race, and rectangular swivel plate with four slotted mounting holes.

#### Wheel fastening (6):

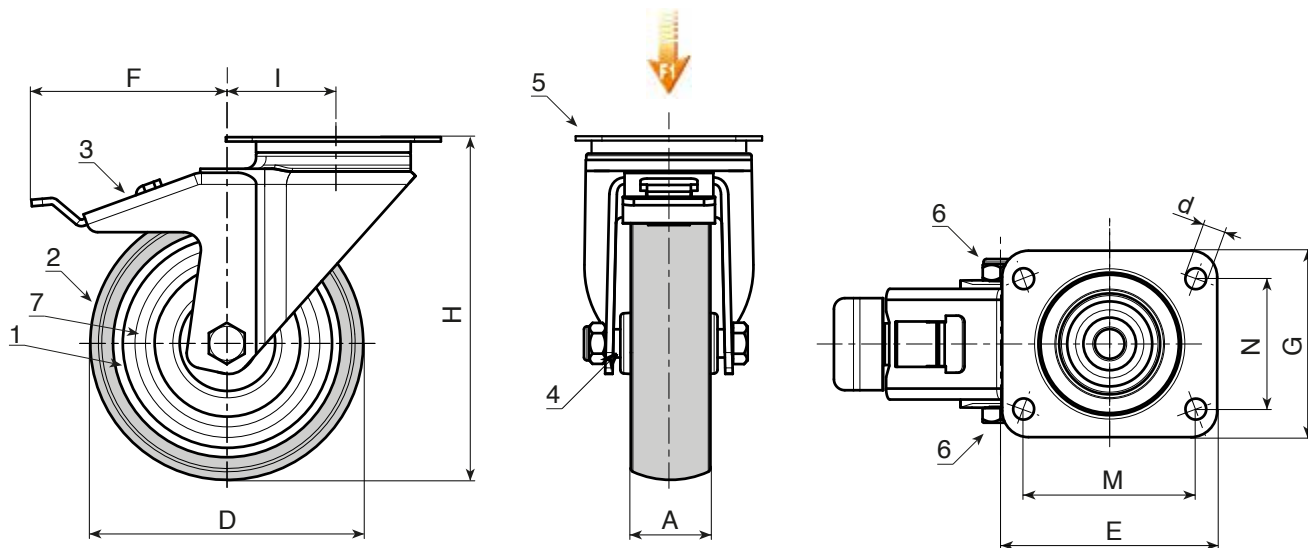
Steel hex head screw, coupled with a steel nut.

#### Thread guards (7):

Sheared steel thread guard disk fixed on both sides.

#### Special requests:

- None.



art.	D	A	H	I	E	G	M	N	d	F	g	F1 (Kg)
R408050.T18P045X045	50	18	70	26	60	60	45	45	6,5	84	-	40
R408063.T22P045X045	63	22	90	26	60	60	45	45	6,5	84	-	60
R408080.T22P045X045	80	22	109	25	60	60	45	45	6,5	84	-	60
R408100.T27P060X050	100	27	134	36	76	70	60	50	8,3	106	-	80
R408125.T27P060X050	125	27	159	35	76	70	60	50	8,3	106	-	80



# R409

**NEW**



## POLYPROPYLENE / RUBBER WHEEL WITH RIGID STEEL FORK

### Materials:

#### Wheel body:

Polypropylene.

#### Tread:

Synthetic thermoplastic rubber. Hardness  $93 \pm 3$  Shore A.

#### Surface finish:

Smooth.

#### Colour:

(1) Black (RAL 9011).

(2) Light grey.

(3-4-5-6-7) Galvanised blue.

#### Wheel rotation (4):

The hole for the pivot pin is formed by plastic moulding. A galvanised steel tube is positioned between the stud and the hole for protection.

#### Bracket (3):

Steel (DD13) fork, with mounting holes in the base.

#### Wheel fastening (6):

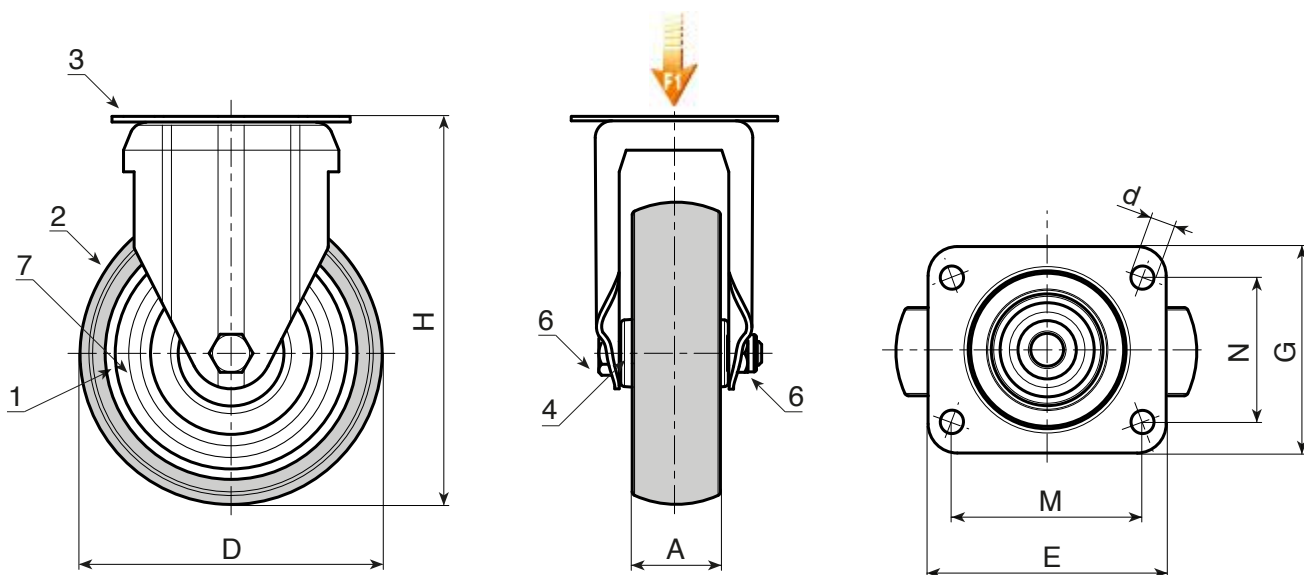
Steel hex head screw, coupled with a steel nut.

#### Thread guards (7):

Sheared steel thread guard disk fixed on both sides.

#### Special requests:

- None.



art.	D	A	H	E	G	M	N	d	g	F1 (Kg)
R409050.T18P045X045	50	18	70	60	60	45	45	6,5	-	40
R409063.T22P045X045	63	22	90	60	60	45	45	6,5	-	60
R409080.T22P045X045	80	22	109	60	60	45	45	6,5	-	60
R409100.T27P060X050	100	27	134	76	70	60	50	8,3	-	80
R409125.T27P060X050	125	27	159	76	70	60	50	8,3	-	80



THE SECRET  
LANDING ON  
FEET IS **ACC**



**BOTECO**<sup>®</sup>