



BOTECO®

YOUR MECHANICAL COMPONENT

GROUP - W

METAL LINE





**LOCKING
KNOBS**

SCORE
POINT



BOTECA[®]
YOUR MECHANICAL COMPONENT

W136CIN

FULL STAINLESS STEEL FOLDING HANDLE



INOX

Materials:

Stainless steel (Aisi 303).

Surface finish:

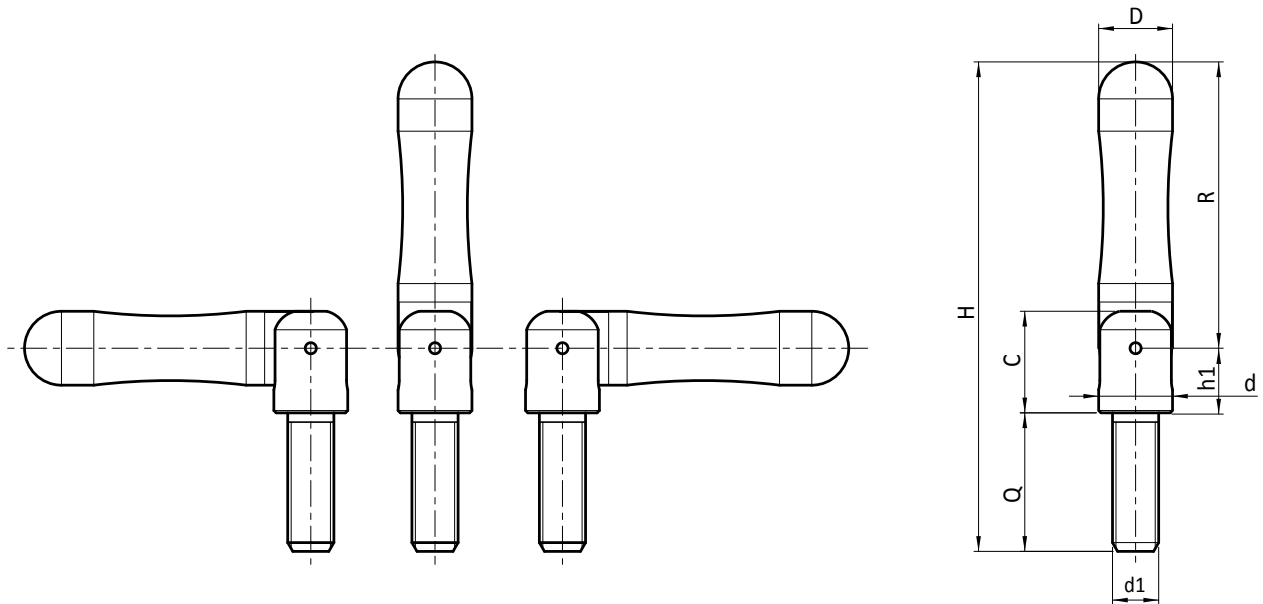
Sandblasted satin finish.

Colour:

Natural.

Thread:

Threaded stud obtained by turning (thread tolerance 6g).



INOX

	art.	D	R	H	C	h1	d	d1 _{6g}	Q	g
●	W136062.1M10X30CIN	16	62	106	22	14	16	M10	35	118

W319

NEW

+200°
-40°

Aisi
303

RoHS
COMPLIANT

STAINLESS STEEL BALL DIN319 - C DESIGN

INOX

Materials:

Stainless steel (Aisi 303).

Surface finish:

W319CIN:

Turned with low roughness.

W319CIB:

Low surface roughness obtained by turning and galvanically treated (brightening, with resistance to salt spray between 200-300 hours).

Colour:

W319CIN:

Natural.

W319CIB:

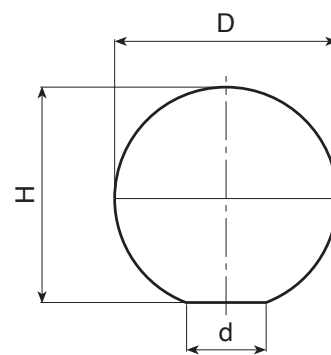
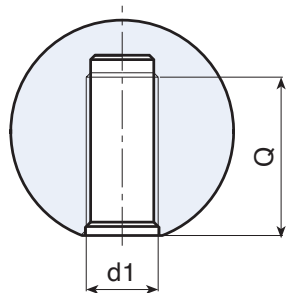
Brightened.

Hole:

Female threaded hole machined from solid metal (thread tolerance 6H).

Special requests:

- Upon request and for special quantities inserts can be supplied to customer's drawing with hole diameter d1.



Version W319CIN - stainless steel (Aisi 303)

Art.	D	d	H	d1 _{6H}	Q	g
W319016.IM04CIN	16	8	15	M4	7	16
W319020.IM05CIN	20	12	18	M5	9	30
W319025.IM06CIN	25	15	22.5	M6	11	59
W319032.IM08CIN	32	18	29	M8	14	123
W319040.IM10CIN	40	22	37	M10	18	241

Version W319CIB - stainless steel (Aisi 303) - BRIGHTENED

Art.	D	d	H	d1 _{6H}	Q	g
W319016.IM04CIB	16	8	15	M4	7	16
W319020.IM05CIB	20	12	18	M5	9	30
W319025.IM06CIB	25	15	22.5	M6	11	59
W319032.IM08CIB	32	18	29	M8	14	123
W319040.IM10CIB	40	22	37	M10	18	241

W118



STEEL KNOB WITH THREADED HOLE

Materials:

W118B-W118H:

Steel with strength class 5.8.

W118CIN:

Stainless steel (Aisi 303).

Surface finish:

W118...H (nickel plated):

Turned and sandblasted.

W118...B (black-oxide treated) and W118...CIN (stainless steel):

Turned and polished.

Colour:

W118...B:

Black-oxide treated.

W118...H:

Nickel-plated.

W118...CIN:

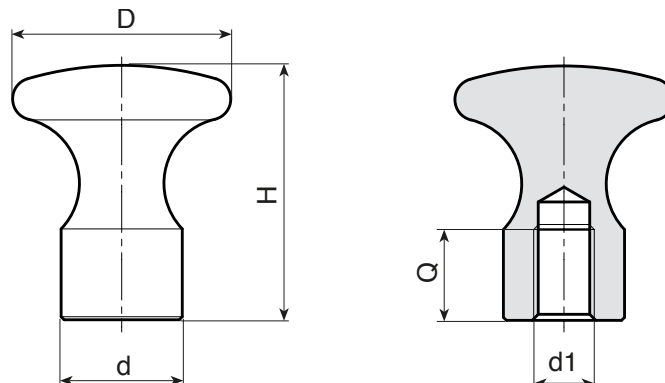
Natural.

Hole:

Female threaded hole machined from solid metal (thread tolerance 6H).

Special requests:

- Upon request and for special quantities knobs can be supplied to customer's drawing with hole diameter d1.



Version W118...H - Nickel plated

art.	d	D	H	d1 _{6H}	Q	g
W11816.SM05H	10	16	18	M5	7	-
W11820.SM06H	12	20	24	M6	9	-
W11825.SM06H	14	25	29	M6	9	-
W11832.SM08H	18	32	37	M8	12	-
W11836.SM10H	20	36	42	M10	15	-

Version W118...B - Black-oxide treated

Art.	d	D	H	d1 _{6H}	Q	g
W11816.SM05B	10	16	18	M5	7	-
W11820.SM06B	12	20	24	M6	9	-
W11825.SM06B	14	25	29	M6	9	-
W11832.SM08B	18	32	37	M8	12	-
W11836.SM10B	20	36	42	M10	15	-

Version W118...CIN - Stainless steel (Aisi 303)

INOX

Art.	d	D	H	d1 _{6H}	Q	g
W11816.IM05CIN	10	16	18	M5	7	-
W11820.IM06CIN	12	20	24	M6	9	-
W11825.IM06CIN	14	25	29	M6	9	-
W11832.IM08CIN	18	32	37	M8	12	-
W11836.IM10CIN	20	36	42	M10	15	-

W515

NEW

+135°
-30°

PA6
+G.F.

AVP

UL94
HB

RoHS
COMPLIANT

METAL INDEXED CLAMPING LEVER WITH STRAIGHT ARM AND THREADED HOLE INSERT

Materials:

(1-2-5) Lever body, arm and indexed insert in steel with strength class 5.8.

Surface finish:

(1-2-5) Turned with low roughness.
(6) Satin.

Colour:

(1-2-5) Standard black-oxide treatment.

Handgrip:

(6) Ball knob I103 in reinforced polyamide in black Ral 9011 [see page].

Handgrip fixing method:

Screwed on and glued.

Hole:

Female threaded hole machined from the insert (hole tolerance 6H).

Spring:

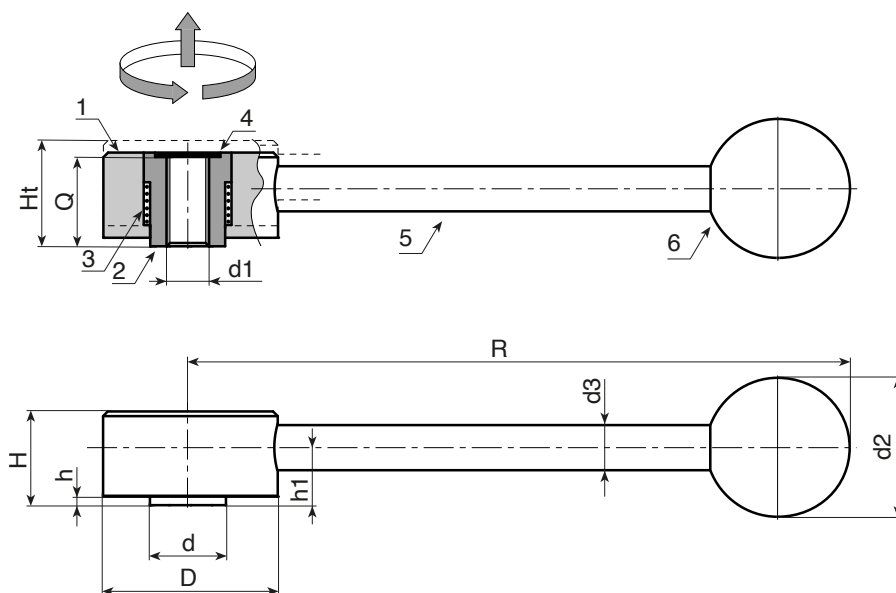
(3) Stainless steel spring (Aisi 302).

Cap:

(4) Aluminium hole cover cap, glued.

Special requests:

- None.



Art.	D	R	d	H	Ht	h	h1	d2	d3	d1 _{6H}	Q	g
W515114.VBM0601	33	114	13,5	19	23	2	12	25	10	M6	18	166
W515114.VBM0801	33	114	13,5	19	23	2	12	25	10	M8	18	164
W515146.VBM1001	41	146	19	22	26	2	13,5	30	12	M10	21	295
W515146.VBM1201	41	146	19	22	26	2	13,5	30	12	M12	21	291
W515165.VBM1201	45	165	23	28	33	2	17	35	14	M12	27	466
W515165.VBM1601	45	165	23	28	33	2	17	35	14	M16	27	450

W516

NEW

+135°
-30°

PA6
+G.F.

AVP

UL94
HB

RoHS
COMPLIANT

METAL INDEXED CLAMPING LEVER WITH INCLINED ARM AND THREADED HOLE INSERT

Materials:

(1-2-5) Lever body, arm and indexed insert in steel with strength class 5.8.

Surface finish:

(1-2-5) Turned with low roughness.
(6) Satin.

Colour:

(1-2-5) Standard black-oxide treatment.

Handgrip:

(6) Ball knob I103 in reinforced polyamide in black Ral 9011 [see page].

Handgrip fixing method:

Screwed on and glued.

Hole:

Female threaded hole machined from the insert (hole tolerance 6H).

Spring:

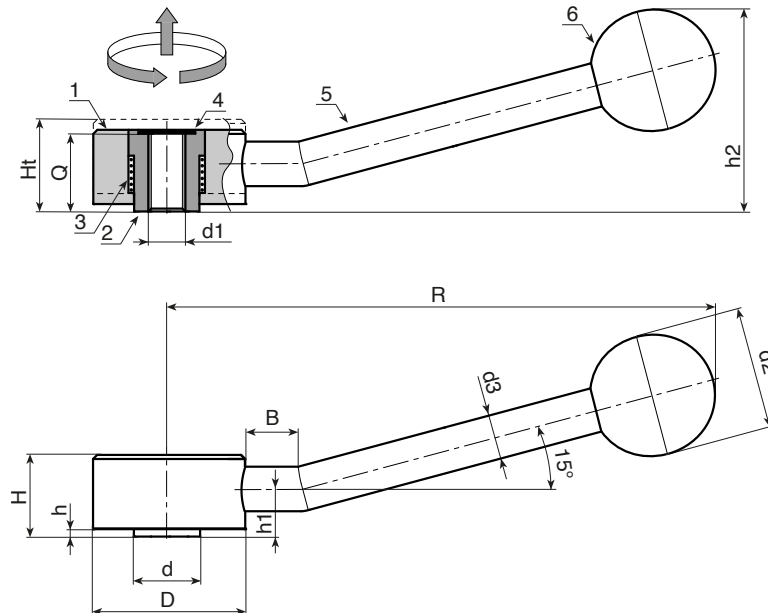
(3) Stainless steel spring (Aisi 302).

Cap:

(4) Aluminium hole cover cap, glued.

Special requests:

- None.



	Art.	D	R	d	B	H	Ht	h	h1	h2	d2	d3	d1 _{6H}	Q	g
●	W516114.VBM0601	33	112	13,5	15	19	23	2	12	41	25	10	M6	18	166
●	W516114.VBM0801	33	112	13,5	15	19	23	2	12	41	25	10	M8	18	164
●	W516146.VBM1001	41	142	19	15	22	26	2	13,5	53	30	12	M10	21	295
●	W516146.VBM1201	41	142	19	15	22	26	2	13,5	53	30	12	M12	21	290
●	W516165.VBM1201	45	162	23	15	28	33	2	17	66	35	14	M12	27	467
●	W516165.VBM1601	45	162	23	15	28	33	2	17	66	35	14	M16	27	451

W500



FIXED METAL LEVER WITH INCLINED HANDLE AND THREADED HOLE

Materials:

W500:

Steel with strength class 5.8.

W500CIN:

Stainless steel (Aisi 303).

Surface finish:

Turned with low roughness.

Colour:

W500:

Nickel plated (galvanic treatment).

W500 CIN:

Natural.

Alternative finishes:

Black-oxide treatment:

(replace the final letter of the code (H) with letter B (W500070.SM0801B).

Galvanising:

(replace the final letter of the code (H) with letter Z (W500070.SM0801Z).

Handgrip:

Conical knob I500 in reinforced PA6 in black (Ral 9011) [see page].

Handgrip fixing method:

Push-fit, removable.

Hole:

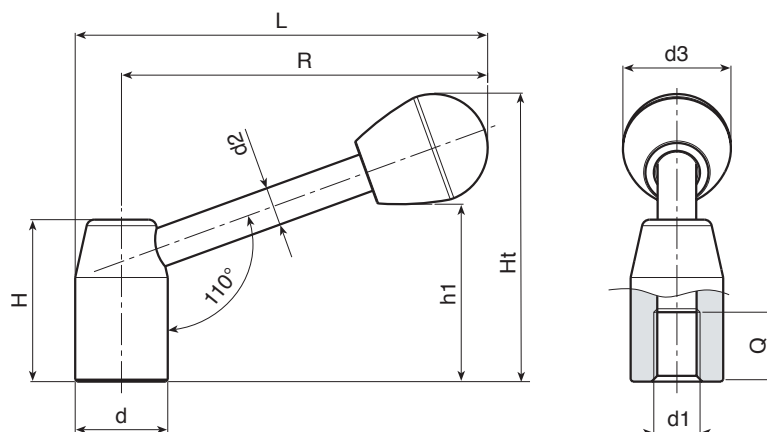
Female threaded hole machined from solid metal (thread tolerance 6H).

Fixing method:

For fixing systems, or execution of keyways or square holes, please refer to the technical notes attached to the catalogue.

Special requests:

- Upon request and for special quantities levers can be supplied with custom hole diameter d1.
- Upon request and for special quantities handgrip available in the colours indicated in the chart [page].



Version W500 - nickel-plated steel

art.	d	R	L	H	Ht	h1	d2	d3	d1 _{6H}	Q	g
W500070.SM0801H	20	67	77	34	57	34	8	22	M8	15	89
W500080.SM1001H	22	76	87	38	63	40	8	22	M10	15	111
W500095.SM1201H	24	91	102	42	73	45	10	28	M12	18	160
W500110.SM1201H	28	105	119	48	82	54	12	28	M12	18	280
W500125.SM1601H	32	120	135	52	92	59	12	32	M16	22	340
W500140.SM1601H	36	135	152	58	101	68	14	32	M16	23	513
W500150.SM2001H	40	144	164	64	110	72	16	37	M20	25	687
W500170.SM2001H	45	162	184	70	121	83	16	37	M20	28	890

Version W500 CIN - stainless steel (Aisi 303)

art.	d	R	L	H	Ht	h1	d2	d3	d1 _{6H}	Q	g
W500070.IM0801CIN	20	67	77	34	57	34	8	22	M8	15	89
W500080.IM1001CIN	22	76	87	38	63	40	8	22	M10	15	111
W500095.IM1201CIN	24	91	102	42	73	45	10	28	M12	18	160
W500110.IM1201CIN	28	105	119	48	82	54	12	28	M12	18	280
W500125.IM1601CIN	32	120	135	52	92	59	12	32	M16	22	340
W500140.IM1601CIN	36	135	152	58	101	68	14	32	M16	23	513
W500150.IM2001CIN	40	144	164	64	110	72	16	37	M20	25	687
W500170.IM2001CIN	45	162	184	70	121	83	16	37	M20	28	890

INOX

W502



METAL FIXED LEVER WITH INCLINED HANDLE AND SMOOTH BORE

Materials:

W502:

Steel with strength class 5.8.

W502CIN:

Stainless steel (Aisi 303).

Surface finish:

Turned with low roughness.

Colour:

W502:

Nickel plated (galvanic treatment).

W502CIN:

Natural.

Alternative finishes:

Black-oxide treatment:

(replace the final letter of the code (H) with letter B (W502070.SM0801B).

Galvanising:

(replace the final letter of the code (H) with letter Z (W502070.SM0801Z).

Handgrip:

Conical knob I500 in reinforced PA6 in black (Ral 9011) [see page].

Handgrip fixing method:

Push-fit, removable.

Hole:

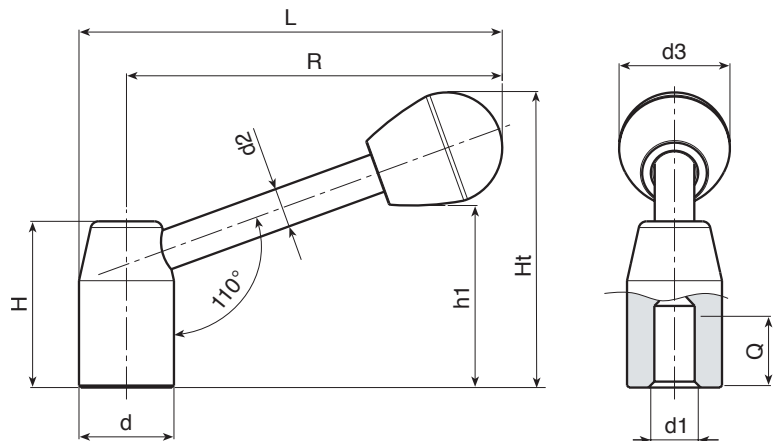
Blind smooth bore machined from solid metal (bore tolerance H10).

Fixing method:

For fixing systems, or execution of keyways or square holes, please refer to the technical notes attached to the catalogue.

Special requests:

- Upon request and for special quantities levers can be supplied with custom hole diameter d1.
- Upon request and for special quantities handgrip available in the colours indicated in the chart [page 807].



Version W502 - nickel-plated steel

art.	d	R	L	H	Ht	h1	d2	d3	d1 _{H10}	Q	g
W502070.SD0801H	20	67	77	34	57	34	8	22	8	16	84
W502080.SD1001H	22	76	87	38	63	40	8	22	10	18	109
W502095.SD1201H	24	91	102.5	42	73	45	10	28	12	20	158
W502110.SD1201H	28	105	119	48	82	54	12	28	12	22	278
W502125.SD1601H	32	120	135.5	52	92	59	12	32	16	25	337
W502140.SD1601H	36	135	152	58	101	68	14	32	16	26	500
W502150.SD2001H	40	144	164	64	110	72	16	37	20	28	670
W502170.SD2001H	45	162	184	70	121	83	16	37	20	30	870

Version W502 CIN - stainless steel (Aisi 303)

art.	d	R	L	H	Ht	h1	d2	d3	d1 _{H10}	Q	g
W502070.ID0801CIN	20	67	77	34	57	34	8	22	8	16	84
W502080.ID1001CIN	22	76	87	38	63	40	8	22	10	18	109
W502095.ID1201CIN	24	91	102	42	73	45	10	28	12	20	158
W502110.ID1201CIN	28	105	119	48	82	54	12	28	12	22	278
W502125.ID1601CIN	32	120	135	52	92	59	12	32	16	25	337
W502140.ID1601CIN	36	135	152	58	101	68	14	32	16	26	500
W502150.ID2001CIN	40	144	164	64	110	72	16	37	20	28	670
W502170.ID2001CIN	45	162	184	70	121	83	16	37	20	30	870



W501



METAL FIXED LEVER WITH HORIZONTAL HANDLE AND THREADED HOLE

Materials:

W501:

Steel with strength class 5.8.

W501CIN:

Stainless steel (Aisi 303).

Surface finish:

Turned with low roughness.

Colour:

W501:

Nickel plated (galvanic treatment).

W501CIN:

Natural.

Alternative finishes:

Black-oxide treatment:

(replace the final letter of the code (H) with letter B (W501070.SM0801B).

Galvanising:

(replace the final letter of the code (H) with letter Z (W501070.SM0801Z).

Handgrip:

Conical knob I500 in reinforced PA6 in black (Ral 9011) [see page].

Handgrip fixing method:

Push-fit, removable.

Hole:

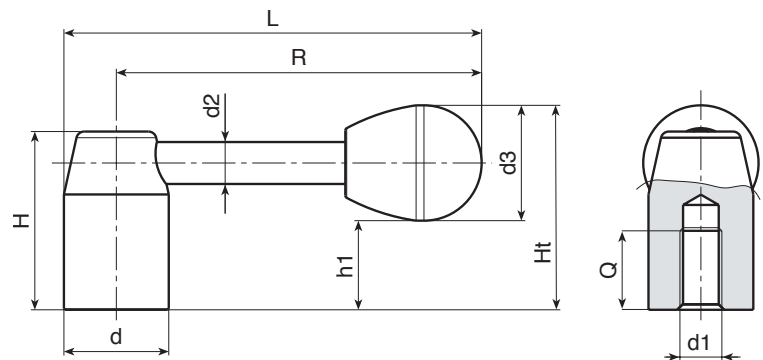
Female threaded hole machined from solid metal (thread tolerance 6H).

Fixing method:

For fixing systems, or execution of keyways or square holes, please refer to the technical notes attached to the catalogue.

Special requests:

- Upon request and for special quantities levers can be supplied with custom hole diameter d1.
- Upon request and for special quantities handgrip available in the colours indicated in the chart [page 807].



Version W501 - nickel-plated steel

art.	d	R	L	H	Ht	h1	d2	d3	d1 _{6H}	Q	g
W501070.SM0801H	20	70	80	34	39	17	8	22	M8	15	89
W501080.SM1001H	22	80	91	38	43	21	8	22	M10	15	111
W501095.SM1201H	24	95	107	42	49	21	10	28	M12	18	160
W501110.SM1201H	28	110	124	48	54	26	12	28	M12	18	280
W501125.SM1601H	32	125	141	52	59	27	12	32	M16	22	340
W501140.SM1601H	36	140	158	58	64	32	14	32	M16	23	513
W501150.SM2001H	40	150	170	64	71	34	16	37	M20	25	687
W501170.SM2001H	45	170	192.5	70	77	40	16	37	M20	28	890

Version W501CIN - stainless steel (Aisi 303)

art.	d	R	L	H	Ht	h1	d2	d3	d1 _{6H}	Q	g
W501070.IM0801CIN	20	70	80	34	39	17	8	22	M8	15	89
W501080.IM1001CIN	22	80	91	38	43	21	8	22	M10	15	111
W501095.IM1201CIN	24	95	107	42	49	21	10	28	M12	18	160
W501110.IM1201CIN	28	110	124	48	54	26	12	28	M12	18	280
W501125.IM1601CIN	32	125	141	52	59	27	12	32	M16	22	340
W501140.IM1601CIN	36	140	158	58	64	32	14	32	M16	23	513
W501150.IM2001CIN	40	150	170	64	71	34	16	37	M20	25	687

INOX

W503



C40

Aisi 303

UL94 HB



METAL FIXED LEVER WITH HORIZONTAL HANDLE AND SMOOTH HOLE

Materials:

W503:

Steel with strength class 5.8.

W503CIN:

Stainless steel (Aisi 303).

Surface finish:

Turned with low roughness.

Colour:

W503:

Nickel plated (galvanic treatment).

W503CIN:

Natural.

Alternative finishes:

Black-oxide treatment:

(replace the final letter of the code (H) with letter B (W503070.SM0801B).

Galvanising:

(replace the final letter of the code (H) with letter Z (W503070.SM0801Z).

Handgrip:

Conical knob I500 in reinforced PA6 in black (Ral 9011) [see page].

Handgrip fixing method:

Push-fit, removable.

Hole:

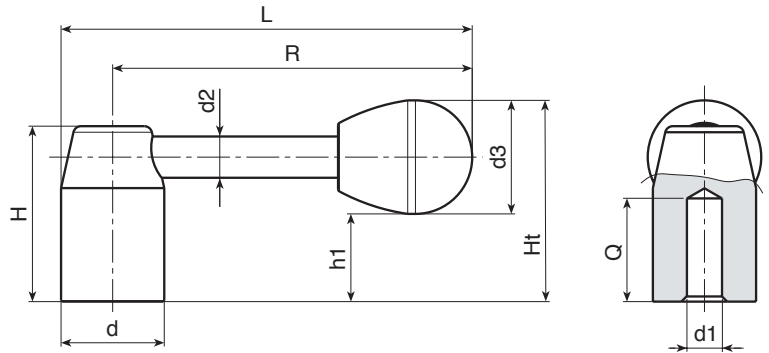
Blind smooth bore machined from solid metal (bore tolerance H10).

Fixing method:

For fixing systems, or execution of keyways or square holes, please refer to the technical notes attached to the catalogue.

Special requests:

- Upon request and for special quantities levers can be supplied with custom hole diameter d1.
- Upon request and for special quantities handgrip available in the colours indicated in the chart [page 807].



Version W503 - nickel-plated steel

art.	d	R	L	H	Ht	h1	d2	d3	d1 _{H10}	Q	g
W503070.SD0801H	20	70	80	34	39	17	8	22	8	16	84
W503080.SD1001H	22	80	91	38	43	21	8	22	10	18	109
W503095.SD1201H	24	95	107	42	49	21	10	28	12	20	158
W503110.SD1201H	28	110	124	48	54	26	12	28	12	22	278
W503125.SD1601H	32	125	141	52	59	27	12	32	16	25	337
W503140.SD1601H	36	140	158	58	64	32	14	32	16	26	500
W503150.SD2001H	40	150	170	64	71	34	16	37	20	28	670
W503170.SD2001H	45	170	192.5	70	77	40	16	37	20	30	870

Version W503CIN - stainless steel (Aisi 303)

art.	d	R	L	H	Ht	h1	d2	d3	d1 _{H10}	Q	g
W503070.ID0801CIN	20	70	80	34	39	17	8	22	8	16	84
W503080.ID1001CIN	22	80	91	38	43	21	8	22	10	18	109
W503095.ID1201CIN	24	95	107	42	49	21	10	28	12	20	158
W503110.ID1201CIN	28	110	124	48	54	26	12	28	12	25	278
W503125.ID1601CIN	32	125	141	52	59	27	12	32	16	22	337
W503140.ID1601CIN	36	140	158	58	64	32	14	32	16	23	500
W503150.ID2001CIN	40	150	170	64	71	34	16	37	20	25	670

INOX

W510

FLAT METAL FIXED LEVER WITH INCLINED HANDLE



Materials:

Steel with strength class 5.8.

Surface finish:

Turned with low roughness.

Colour:

Nickel plated (galvanic treatment).

Alternative finishes:

Black-oxide treatment:

(replace the final letter of the code (H) with letter B (W510082.SD0801B).

Galvanising:

(replace the final letter of the code (H) with letter Z (W510082.SD0801Z).

Handgrip:

Ball knob I104 in reinforced PA6 in black (Ral 9011) [see page].

Handgrip fixing method:

Push-fit, removable.

Hole:

Blind smooth bore machined from solid metal (bore tolerance H10).

Central Cap:

Grey polyamide (RAL 7035 code 13).

Alternative cap colours:

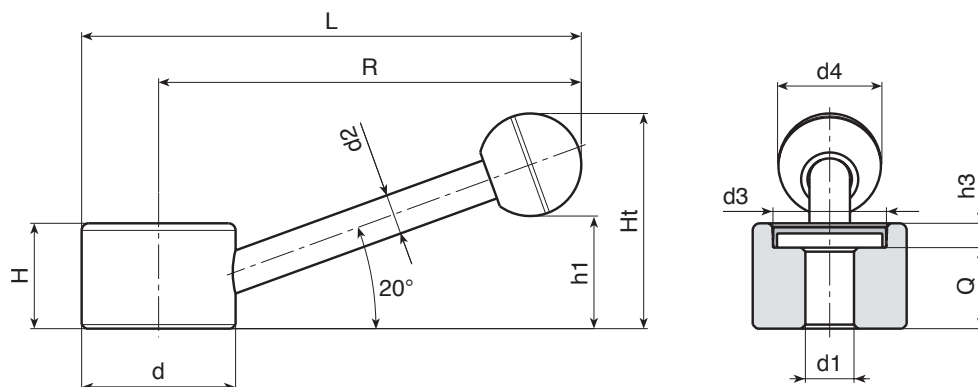
Levers with black oxide treated finish will be supplied with central cap in grey (RAL 7035 code 13).

Fixing method:

For fixing systems, or execution of keyways or square holes, please refer to the technical notes attached to the catalogue.

Special requests:

- Upon request and for special quantities levers can be supplied with custom hole diameter d_1 .
- Upon request and for special quantities handgrip available in the colours indicated in the chart [page 807].



Art.	d	R	L	H	Ht	h1	h3	d2	d3	d4	d1 _{H10}	Q	g
W510082.SD1001H	30	82	97	22	43	23	6	8	22	20	10	16	118
W510104.SD1001H	38	104	123	26	53	28	6	10	28	25	10	20	235
W510104.SD1201H	38	104	123	26	53	28	6	10	28	25	12	20	230
W510128.SD1401H	48	128	152	30	66	30	6	12	34	35	14	24	434
W510128.SD1601H	48	128	152	30	66	30	6	12	34	35	16	24	427

Attention: For a minimum of 50 pieces the diameter d_1 can be customised (hole tolerance H10).

W510CIN



FLAT STAINLESS STEEL FIXED LEVER WITH INCLINED HANDLE

INOX

Materials:

Stainless steel (Aisi 303).

Surface finish:

Turned with low roughness.

Colour:

Natural.

Handgrip:

Ball knob I104 in reinforced PA6 in black (Ral 9011) [see page].

Handgrip fixing method:

Push-fit, removable.

Hole:

Blind smooth bore machined from solid metal (bore tolerance H10).

Central Cap:

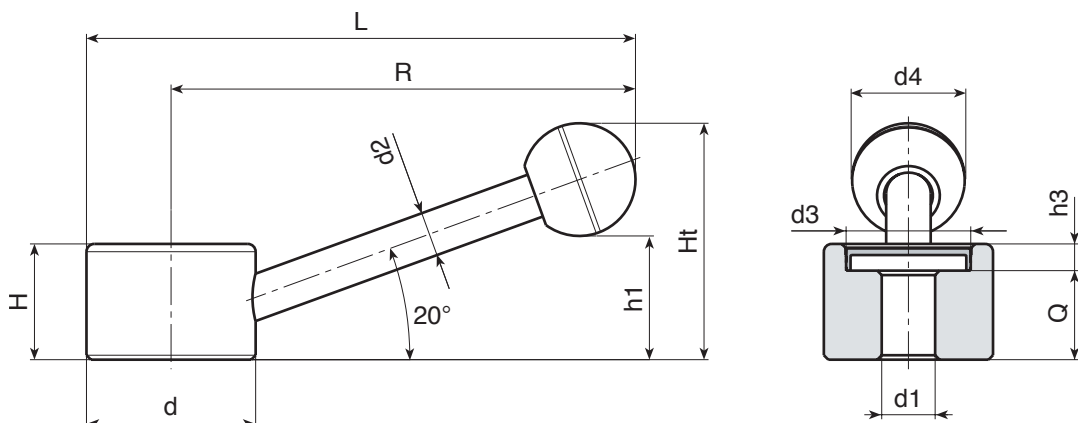
Black polyamide (RAL 9001 code 01).

Fixing method:

For fixing systems, or execution of keyways or square holes, please refer to the technical notes attached to the catalogue.

Special requests:

- Upon request and for special quantities levers can be supplied with custom hole diameter d1.
- Upon request and for special quantities handgrip available in the colours indicated in the chart [page 807].



INOX

Art.	d	R	L	H	Ht	h1	h3	d2	d3	d4	d1H10	Q	g
● W510082.ID1001CIN	30	82	97	22	43	23	6	8	22	20	10	16	118
● W510104.ID1001CIN	38	104	123	26	53	28	6	10	28	25	10	20	235
● W510128.ID1401CIN	48	128	152	30	66	30	6	12	34	35	14	24	434

Attention: For a minimum of 50 pieces the diameter d1 can be customised (hole tolerance H10 galvanised and H7 black-oxide treated).

W464



KNURLED METAL HANDWHEEL WITH THREADED STUD

Materials:

W464:

Steel with strength class 5.8.

W464CIN:

Stainless steel (Aisi 303).

Surface finish:

Turned with low roughness.

Colour:

W464:

Nickel plated (galvanic treatment).

W464 CIN:

Natural.

Alternative finishes:

Black-oxide treatment:

(replace the final letter of the code (H) with letter B (W46429.SM08X..B).

Galvanising:

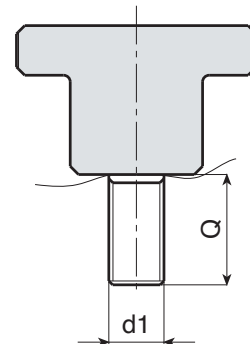
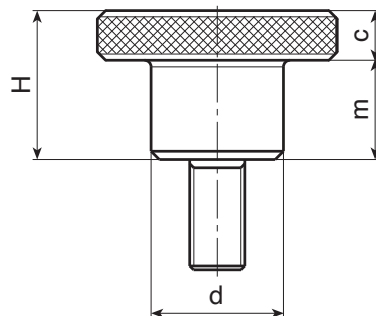
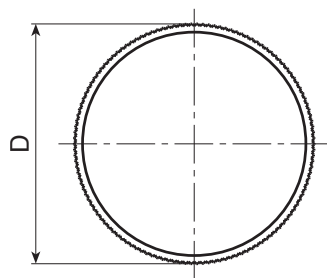
(replace the final letter of the code (H) with letter Z (W46429.SM08X..Z).

Stud:

Threaded stud machined from solid metal (thread tolerance 6g).

Special requests:

- Upon request and for special quantities inserts can be supplied with customised lengths.



Version W464 - nickel-plated steel

Art.	d	D	H	m	c	Q MAX	d1 _{6g}	Q	g
W46411.SM03X16H	6	11	8	5	3	16	M3	16	5
W46415.SM04X10H	8	15	10	6	4	20	M4	10	7.8
W46419.SM05X..H	10	19	12	8	4	20	M5	16-30	15,6-17
W46423.SM06X..H	12	23	15	10	5	30	M6	16-35	27,5-30,5
W46429.SM08X..H	16	29	18	12	6	40	M8	16-30	55-59
W46435.SM10X25H	20	35	23	15	8	40	M10	25	109.5

Enter the selected stud length in place of the two dots .. in the item code.

A.R. = Customised stud length available for a minimum of 100 pieces.

Qmax = maximum turning length.

Version W464 CIN - stainless steel (Aisi 303)

Art.	d	D	H	m	c	Q MAX	d1 _{6g}	Q	g
W46411.IM03X..CIN	6	11	8	5	3	16	M3	A.R.	-
W46415.IM04X..CIN	8	15	10	6	4	20	M4	A.R.	-
W46419.IM05X..CIN	10	19	12	8	4	20	M5	A.R.	-
W46423.IM06X35CIN	12	23	15	10	5	30	M6	35	30.5
W46429.IM08X..CIN	16	29	18	12	6	40	M8	A.R.	-
W46435.IM10X..CIN	20	35	23	15	8	40	M10	A.R.	-

Enter the selected stud length in place of the two dots .. in the item code.

A.R. = Customised stud length available for a minimum of 100 pieces.

Qmax = maximum turning length.

INOX

W466



KNURLED METAL HANDWHEEL WITH THREADED HOLE

Materials:

W466:

Steel with strength class 5.8.

W466 PIN:

Stainless steel (Aisi 303).

Surface finish:

Turned with low roughness.

Colour:

W466:

Nickel plated (galvanic treatment).

W466PIN:

Natural.

Alternative finishes:

Black-oxide treatment:

(replace the final letter of the code (H) with letter B (W46629.SM08B).

Galvanising:

(replace the final letter of the code (H) with letter Z (W46629.SM08Z).

Hole:

Threaded through hole machined from solid metal (thread tolerance 6H).

Special requests:

- Upon request and for special quantities inserts can be supplied to customer's drawing with hole diameter d1.



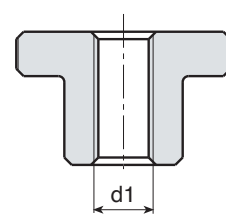
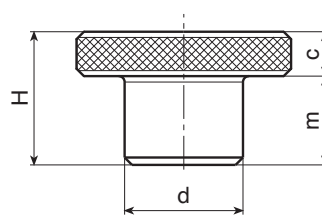
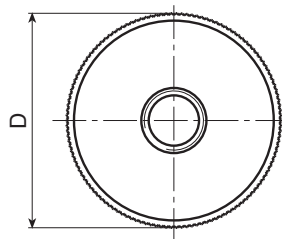
ST. STEEL



Galvanised ver.



Black-oxide treated ver.



Version W466 - nickel-plated steel

Art.	d	D	H	m	c	d1 _{6H}	g
W46611.SM03H	6	11	8	5	3	M3	3
W46615.SM04H	8	15	10	6	4	M4	7
W46619.SM05H	10	19	12	8	4	M5	12
W46623.SM06H	12	23	15	10	5	M6	22.5
W46629.SM08H	16	29	18	12	6	M8	45
W46635.SM10H	20	35	23	15	8	M10	87
W46639.SM12H	22	39	25	15	10	M12	121

Version W466 PIN - stainless steel (Aisi 303)

Art.	d	D	H	m	c	d1 _{6H}	g
W46611.IM03PIN	6	11	8	5	3	M3	3
W46615.IM04PIN	8	15	10	6	4	M4	7
W46619.IM05PIN	10	19	12	8	4	M5	12
W46623.IM06PIN	12	23	15	10	5	M6	22.5
W46629.IM08PIN	16	29	18	12	6	M8	45
W46635.IM10PIN	20	35	23	15	8	M10	87
W46639.IM12PIN	22	39	25	15	10	M12	121

INOX

W467



C40

Aisi 303



KNURLED METAL HANDWHEEL WITH SHORT HUB AND THREADED HOLE

Materials:

W467:

Steel with strength class 5.8.

W467 PIN:

Stainless steel (Aisi 303).

Surface finish:

Turned with low roughness.

Colour:

W467:

Nickel plated (galvanic treatment).

W467 PIN:

Natural.

Alternative finishes:

Black-oxide treatment:

(replace the final letter of the code (H) with letter B (W46729.SM08B).

Galvanising:

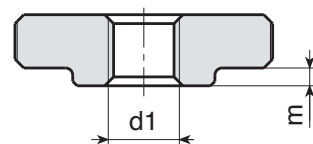
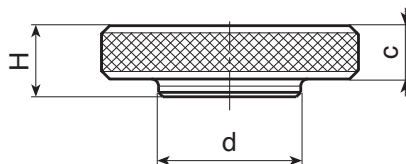
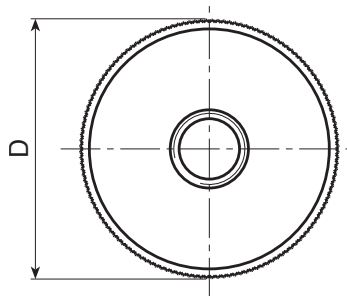
(replace the final letter of the code (H) with letter Z (W46729.SM08Z).

Hole:

Threaded through hole machined from solid metal (thread tolerance 6H).

Special requests:

- Upon request and for special quantities inserts can be supplied to customer's drawing with hole diameter d1.



Version W467 - nickel-plated steel

Art.	d	D	H	m	c	d1 _{6H}	g
W46711.SM03H	6	11	3	-	3	M3	2
W46715.SM04H	8	15	4	-	4	M4	5
W46719.SM05H	10	19	5	1	4	M5	9
W46723.SM06H	12	23	6	1	5	M6	16
W46729.SM08H	16	29	8	2	6	M8	32
W46735.SM10H	20	35	10	2	8	M10	61
W46739.SM12H	22	39	12	2	10	M12	92

Version W467 PIN - stainless steel (Aisi 303)

INOX

Art.	d	D	H	m	c	d1 _{6H}	g
W46711.IM03PIN	6	11	3	-	3	M3	2
W46715.IM04PIN	8	15	4	-	4	M4	5
W46719.IM05PIN	10	19	5	1	4	M5	9
W46723.IM06PIN	12	23	6	1	5	M6	16
W46729.IM08PIN	16	29	8	2	6	M8	32
W46735.IM10PIN	20	35	10	2	8	M10	61
W46739.IM12PIN	22	39	12	2	10	M12	92

W184

STEEL WASHER WITH SMOOTH BORE



AVP

AISI
303



Materials:

W184:

Steel with strength class 3.8.

W184PIN:

Stainless steel (Aisi 303).

Surface finish:

Turned with low roughness.

Colour:

W184:

Standard blue zinc plating (galvanic treatment).

W184 PIN:

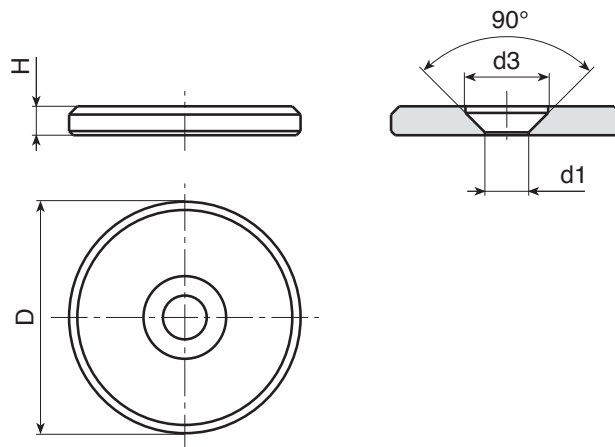
Natural.

Hole:

Smooth through bore machined from solid metal (hole tolerance H10).

Special requests:

- None.



Version W184 - nickel-plated steel

Art.	d	D	H	d1 _{H10}	g
W18416.VP4,5Z	16	3	8	4,5 x M4	4.5
W18420.VP4,5Z	20	3	8	4,5 x M4	7
W18422.VP5,5Z	22	3.5	10	5,5 x M5	10
W18425.VP5,5Z	25	3.5	10	5,5 x M5	13
W18428.VP5,5Z	28	3.5	10	5,5 x M5	16
W18432.VP6,5Z	32	4	12	6,5 x M6	24
W18436.VP6,5Z	36	4	12	6,5 x M6	31
W18440.VP6,5Z	40	5	12	6,5 x M6	48

Version W184 PIN - stainless steel (Aisi 303)

Art.	d	D	H	d1 _{H10}	g
W18416.IP4,5PIN	16	3	8	4,5 x M4	4.5
W18420.IP4,5PIN	20	3	8	4,5 x M4	7
W18422.IP5,5PIN	22	3.5	10	5,5 x M5	10
W18425.IP5,5PIN	25	3.5	10	5,5 x M5	13
W18428.IP5,5PIN	28	3.5	10	5,5 x M5	16
W18432.IP6,5PIN	32	4	12	6,5 x M6	24
W18436.IP6,5PIN	36	4	12	6,5 x M6	31
W18440.IP6,5PIN	40	5	12	6,5 x M6	48

INOX

W700



C40



T-LEVER WITH MOVABLE HANDLE AND THREADED HOLE

Materials:

Steel with strength class 5.8.

Surface finish:

Turned with low roughness.

Colour:

Black-oxide treatment.

Inserts:

- (1) Half-moon shaped ring for black-oxide harmonic steel shafts (UNI 7434 type H).
- (2) Galvanised steel spring.
- (3) Galvanised steel ball 7/32.

Handle:

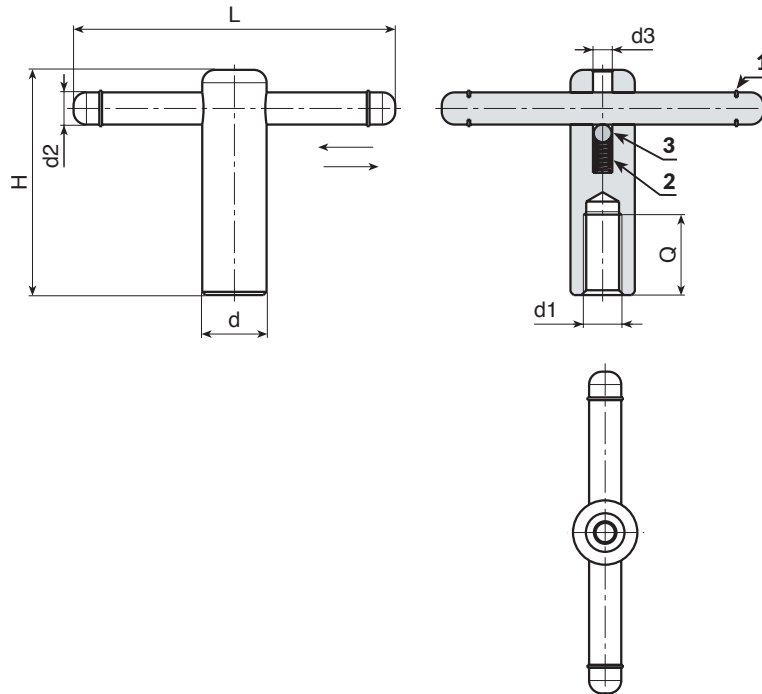
Movable handle locked at stroke end by retaining rings.

Hole:

Female threaded hole machined from solid metal (thread tolerance 6H).

Special Requests:

- Upon request and for special quantities levers can be supplied on customer's drawing with hole diameter $d1$.
- Upon request and for special quantities levers can be supplied on customer's drawing with different surface treatments.



Art.	d	L	H	d2	d3	d1 _{6H}	Q	g
W700085.VM10	18	85	62	8	6	M10	25	143
W700105.VM12	20	105	72	10	6	M12	30	207
W700125.VM16	24	125	87	12	6	M16	40	328
W700145.VM20	30	145	97	16	6	M20	45	570

W701



C40



T-LEVER WITH FIXED HANDLE AND THREADED HOLE

Materials:

Steel with strength class 5.8.

Surface finish:

Turned with low roughness.

Colour:

Black-oxide treatment.

Handle fixing method:

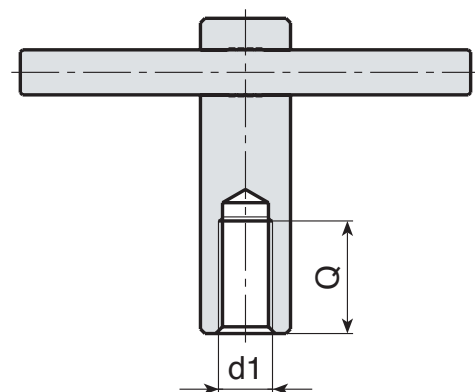
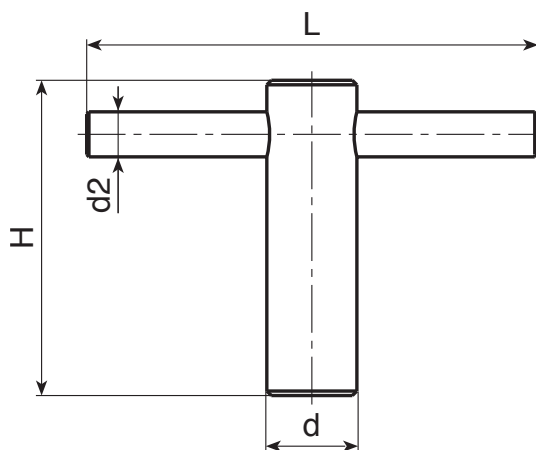
Push-fit. Neither movable, nor removable.

Hole:

Female threaded hole machined from solid metal (thread tolerance 6H).

Special Requests:

- Upon request and for special quantities levers can be supplied on customer's drawing with hole diameter d1.
- Upon request and for special quantities levers can be supplied on customer's drawing with different surface treatments.



	art.	d	L	H	d2	d1 _{6H}	Q	g
●	W701085.VM10	18	85	62	8	M10	25	145
●	W701105.VM12	20	105	72	10	M12	30	208
●	W701125.VM16	24	125	87	12	M16	40	330
●	W701145.VM20	30	145	97	16	M20	45	573

W296



ALUMINIUM CONTROL HANDWHEEL WITH SMOOTH BORE

Materials:
Die-cast aluminium.

Surface finish:
Satin finish, except for the sections (T) with low surface roughness obtained by turning.

Colour:
Nickel plated (galvanic treatment).

Alternative colours (min. 50 pieces):
Black epoxy powder coated:
(replace the final letter of the code (H) with letter V (W296100.AD10V).

Cap:
Central cap in black polyamide (RAL 9011 code 01).

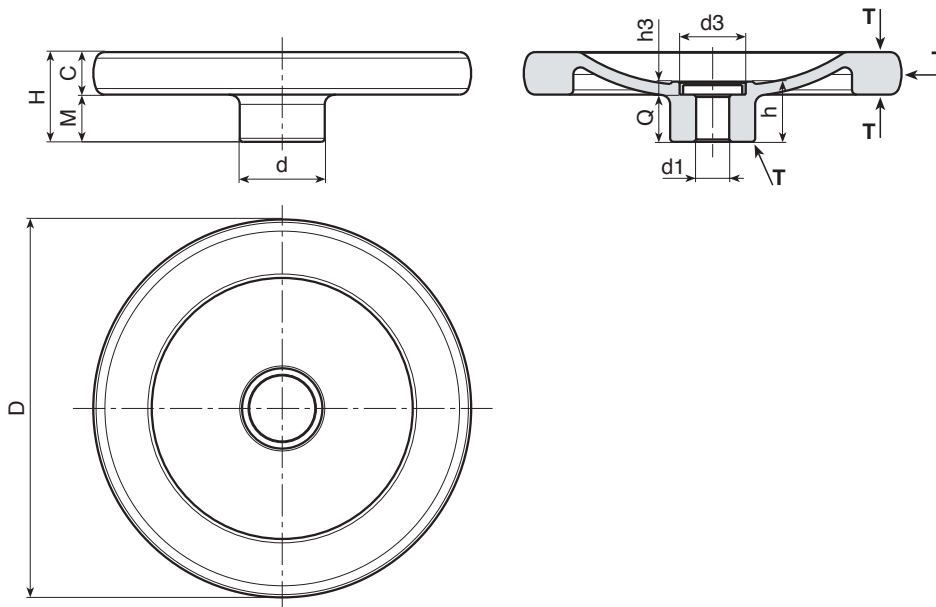
Alternative Cap colours:
The central cap for the black handwheel will be grey (RAL 7035 code no. 13).

Hole:
Smooth through hole, remachined with H7 tolerance.

Fixing method:
For fixing systems, or execution of keyways or square holes, please refer to the technical notes attached to the catalogue.

Special Requests:

- Upon request and for special quantities handwheels can be supplied on customer's drawing with hole diameter d1.



Art.	d	D	H	m	c	h	h3	d3	d1H7	Q	g
W296080.AD08H	26	80	26	14	12	21	5.5	20	8	15.5	142
W296100.AD10H	28	100	28	14	14	21.5	5.5	20	10	16	240
W296130.AD12H	36	130	35	19	16	25.5	5.5	28	12	20	435
W296160.AD14H	36	160	38	20	18	25.5	5.5	28	12	20	685
W296200.AD16H	42	200	44	24	20	31.5	6	34	16	25.5	1185

Attention: For a minimum of 50 pieces the diameter d1 can be customised (hole tolerance H7).

W297



ALUMINIUM CONTROL HANDWHEEL WITH SMOOTH BORE AND REVOLVING HANDLE

Materials:

Die-cast aluminium.

Surface finish:

Satin finish, except for the sections (T) with low surface roughness obtained by turning.

Colour:

Nickel plated (galvanic treatment).

Alternative colours (min. 50 pieces):

Black epoxy powder coated:
(replace the final letter of the code (H) with letter V (W297100.AD10V).

Cap:

Central cap in black polyamide (RAL 9011 code 01).

Alternative cap colours:

The central cap for the black handwheel will be grey (RAL 7035 code no. 13).

Lateral handle:

Revolving handle art. M129 [page].

Hole:

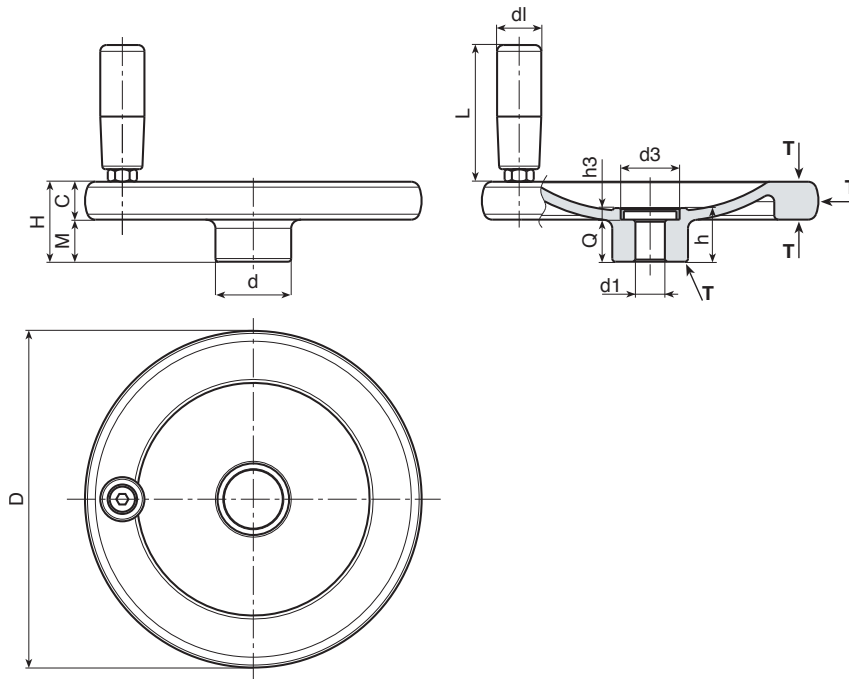
Smooth through hole, remachined with H7 tolerance.

Fixing method:

For fixing systems, or execution of keyways or square holes, please refer to the technical notes attached to the catalogue.

Special Requests:

- Upon request and for special quantities handwheels can be supplied on customer's drawing with hole diameter d1.



Art.	d	D	H	m	c	h	h3	d3	d1 _{H7}	Q	dl	L	g
W297080.AD08H	26	80	26	14	12	21	5.5	20	8	15.5	20	52	185
W297100.AD10H	28	100	28	14	14	21.5	5.5	20	10	16	20	52	282
W297130.AD12H	36	130	35	19	16	25.5	5.5	28	12	20	23	62	492
W297160.AD14H	36	160	38	20	18	25.5	5.5	28	12	20	25	72	778
W297200.AD16H	42	200	44	24	20	31.5	6	34	16	25.5	25	81	1287

Attention: For a minimum of 50 pieces the diameter d1 can be customised (hole tolerance H7).

W298



ALUMINIUM CONTROL HANDWHEEL WITH SMOOTH BORE AND REVOLVING FOLDING HANDLE

Materials:
Die-cast aluminium.

Surface finish:
Satin finish, except for the sections (T) with low surface roughness obtained by turning.

Colour:
Nickel plated (galvanic treatment).

Alternative colours (min. 50 pieces):
Black epoxy powder coated:
(replace the final letter of the code (H) with letter V (W298100.AD10V).

Cap:
Central cap in black polyamide (RAL 9011 code 01).

Alternative cap colours:
The central cap for the black handwheel will be grey (RAL 7035 code no. 13).

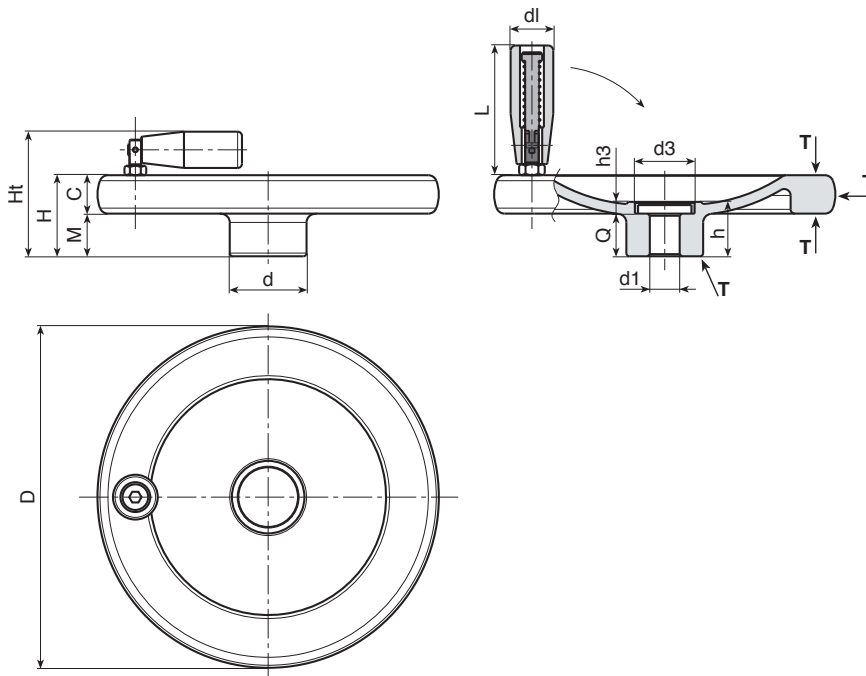
Lateral handle:
Revolving, folding handle art. M136 [page].

Hole:
Smooth through hole, remachined with H7 tolerance.

Special Requests:

- Upon request and for special quantities handwheels can be supplied on customer's drawing with hole diameter d1.

Fixing method:
For fixing systems, or execution of keyways or square holes, please refer to the technical notes attached to the catalogue.



Art.	d	D	H	m	c	h	h3	d3	d1 _{H7}	Q	d1	L	g
W298080.AD08H	26	80	26	14	12	21	5.5	20	8	15.5	20	56	181
W298100.AD10H	28	100	28	14	14	21.5	5.5	20	10	16	20	56	279
W298130.AD12H	36	130	35	19	16	25.5	5.5	28	12	20	25	76	506
W298160.AD14H	36	160	38	20	18	25.5	5.5	28	12	20	25	76	756
W298200.AD16H	42	200	44	24	20	31.5	6	34	16	25.5	26	89	1337

Attention: For a minimum of 50 pieces the diameter d1 can be customised (hole tolerance H7).



704 ()

Stock availability as % (🛒)
90% (●) - 40% (●) - 5% (●)

W995

KNURLED ALUMINIUM CONTROL KNOB WITH NUMBERS



Materials:

Aluminium (alloy AL 6060).

Surface finish:

Turned with low roughness.

Colour:

Anodized black.

Cap:

Central cap in grey polyamide (RAL 7035 code 13).

Grub screw:

Stainless steel 304 grub screw M05x6 with cup point DIN 916.

Hole:

Smooth through hole, remachined with H7 tolerance.

Graduations and numbers:

Graduations and numbers engraved on the smooth part of the knob.

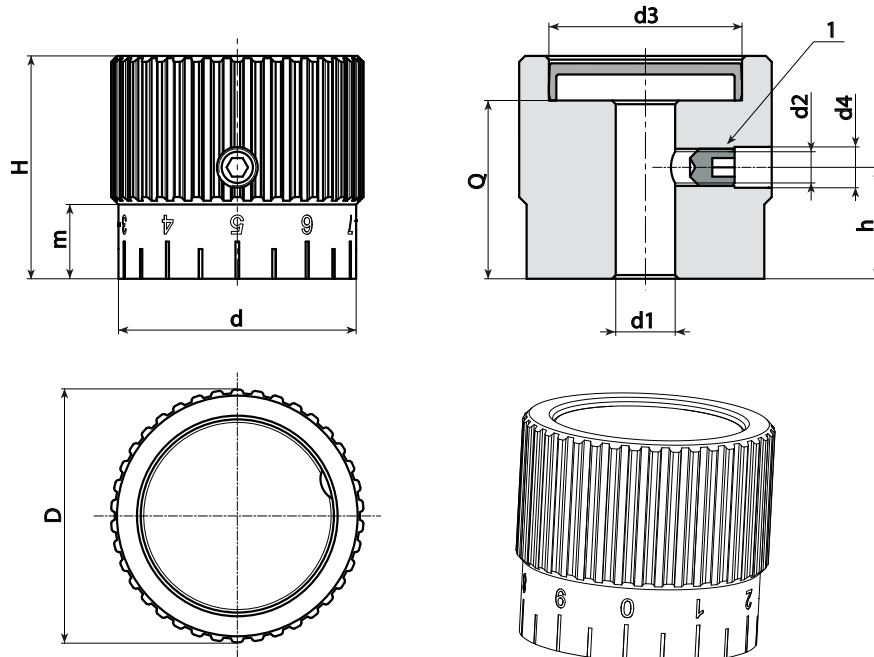
Natural aluminium colour.

Z1= Scale 0-10 with 20 graduations.

Z2= Scale 0-20 with 20 graduations.

Special Requests:

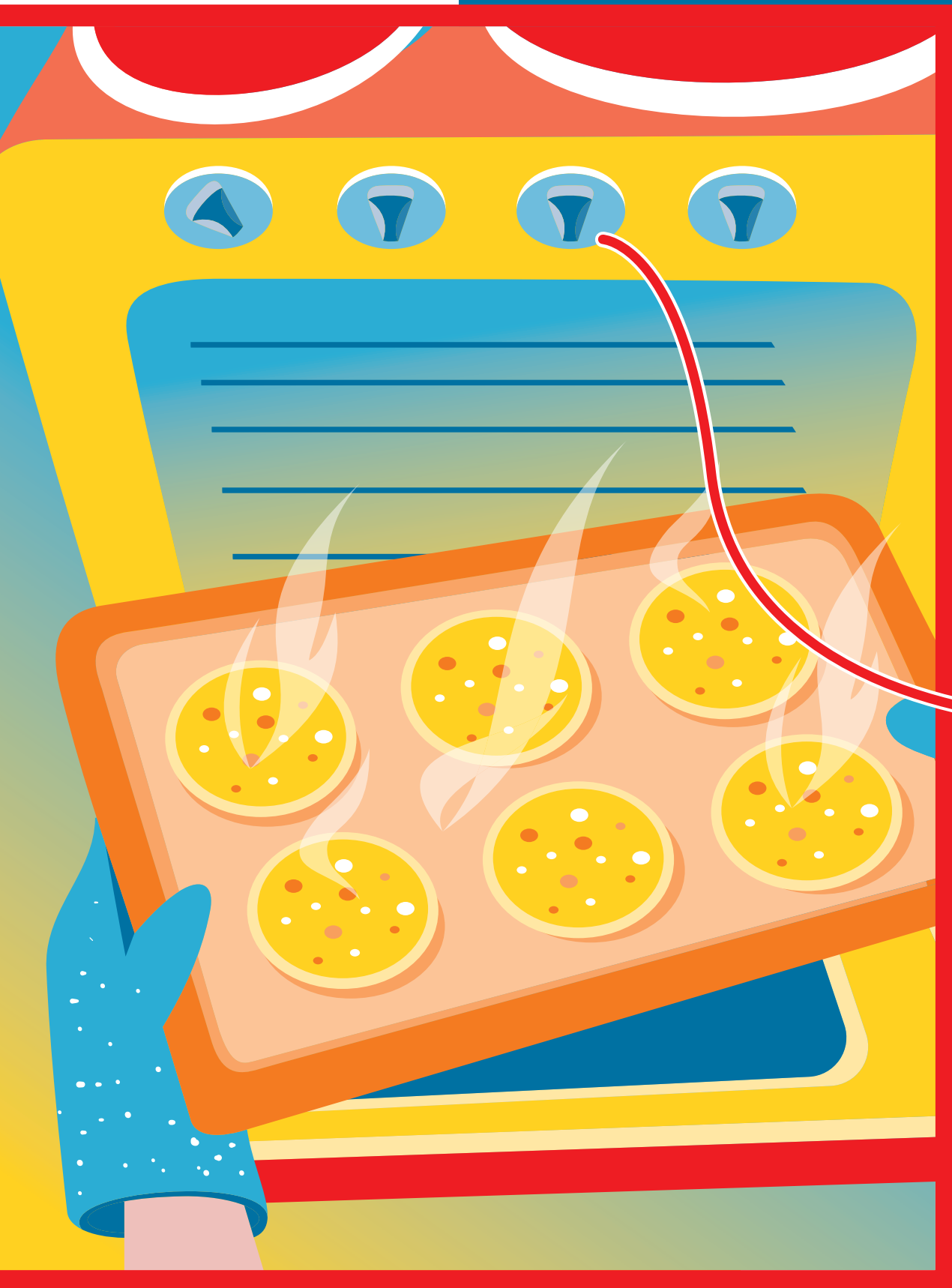
- Upon request and for special quantities control knobs can be supplied to customer's drawing with hole diameter d1.



Art.	D	d	H	m	h	d2	d3	d4	d1 _{H7}	Q	g
W99534.AD0813Z1	34	32	30	10	15	M5	26	5.5	8	24	100

Attention: For a minimum of 50 pieces the diameter d1 can be customised (hole tolerance H7).

Stock availability as % (🛒)
 90% (●) - 40% (●) - 5% (●)



KNOB
FROM
360 DE



BOTECA®