



BOTECO®

YOUR MECHANICAL COMPONENT

GROUP - Y

DIN SERIES





HIGHEST
SURF
FINI



BOTECO[®]

Y637

DIN SERIES

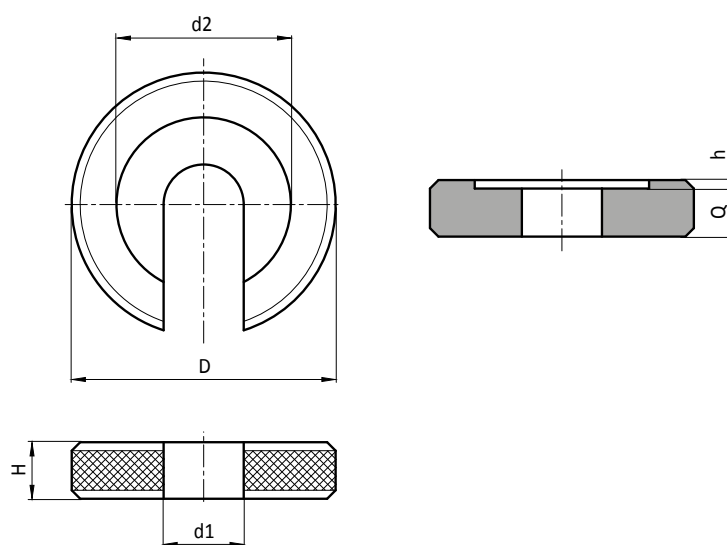


Materials:
Quenched and tempered steel.

Surface finish:
Heat-treated.

Colour:
Black-oxide treatment.

Special requests:
• None.



Art.	D	H	h	d2	d1	Q	g
Y637017.SD05.25	17	5	0.75	12	5.25	4.25	6
Y637022.SD06.4	22	6	0.8	16	6.4	5.2	12
Y637028.SD08.4	28	7	1	21	8.4	6	23
Y637034.SD10.5	34	8	1.2	25	10.5	6.8	38
Y637040.SD13	40	9	1.8	30	13	7.2	57
Y637048.SD14.5	48	12	1.8	33	14.5	10.2	117
Y637056.SD17	56	12	1.8	37	17	10.2	146
Y637064.SD21	64	14	2	45	21	12	234
Y637075.SD25	75	16	2	52	25	14	374
Y637090.SD31	90	18	2	65	31	16	720
Y637100.SD37	100	20	2.5	75	37	17.5	791

Y718



STEEL ANGLED BALL JOINT - DIN 71802 - C DESIGN

Materials:

Steel with strength class 5.8.

Surface finish:

Turned with low roughness.

Colour:

Standard blue galvanising.

Inserts:

- (1) Steel ball joint with threaded hole.
- (3) Harmonic steel spring ring.
- (4) Steel nut with threaded hole (DIN 934).
- (2) Ball insert with milled seat for wrench and threaded stud machined from solid steel (thread tolerance 6g).

Standard version:

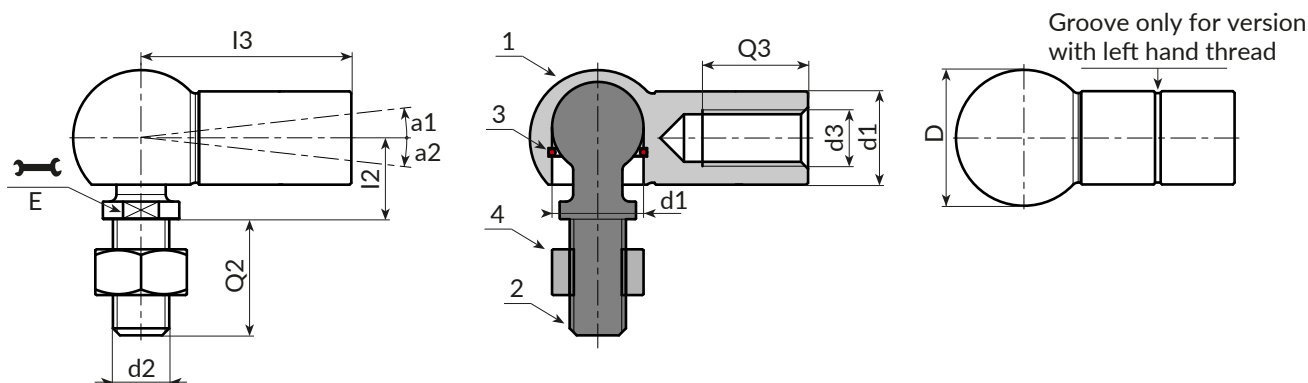
Right-hand thread (thread tolerance 6H).

Version SX (LH):

Left-hand thread (thread tolerance 6H). Identifiable by the groove on the joint.

Special requests:

- None.



Version 718 - joint with standard thread

Art.	d2 _{6g}	d3 _{6H}	D	E	I2	I3	Q2	d1 _{h9-H9}	Q3	a1	a2	g
Y71808.VZM05	M5	M5	12,8	7	9	22	10,2	8	10,2	18	18	15
Y71810.VZM06	M6	M6	14,8	8	11	25	11,5	10	11,5	18	18	25
Y71813.VZM08	M8	M8	19,3	11	13	30	14	13	14	18	18	53
Y71816.VZM10	M10	M10	24	13	16	35	15,5	16	15,5	18	18	104
Y71819.VZM14X1.5	M14X1,5	M14X1,5	30	16	20	45	21,5	19	21,5	-	15	221

Version 718 - joint with LH thread

Art.	d2 _{6g}	d3 _{6H}	D	E	I2	I3	Q2	d1 _{h9-H9}	Q3	a1	a2	g
Y71808.VZM05SX	M5	M5 SX	12,8	7	9	22	10,2	8	10,2	18	18	15
Y71810.VZM06SX	M6	M6 SX	14,8	8	11	25	11,5	10	11,5	18	18	25
Y71813.VZM08SX	M8	M8 SX	19,3	11	13	30	14	13	14	18	18	53
Y71816.VZM10SX	M10	M10 SX	24	13	16	35	15,5	16	15,5	18	18	104
Y71819.VZM14X1.5SX	M14X1,5	M14X1,5 SX	30	16	20	45	21,5	19	21,5	18	18	221

Y719



C40

AISI 303



STEEL ANGLED BALL JOINT WITH SAFETY CATCH - DIN 71802 - CS DESIGN

Materials:

Y719:

Steel with strength class 5.8.

Y719CIN:

Stainless steel (Aisi 303).

Surface finish:

Turned with low roughness.

Colour:

Y719:

Standard blue galvanising.

Y719CIN:

Natural.

Inserts:

(2) Ball insert with milled seat for wrench and threaded stud machined from solid material (thread tolerance 6g).

Y719: steel - Y719CIN: stainless steel (Aisi 303).

(3) Harmonic steel spring ring.

(4) Nut with threaded hole (DIN 934).

Y719: steel - Y719CIN: stainless steel (Aisi 304).

(5) Safety catch to retain the ball with a shaped spring. (Y719: harmonic steel) (Y719CIN: natural stainless steel).

(1) Ball joint with threaded hole and hole for safety spring.

Y719: steel - Y719CIN: stainless steel (Aisi 303).

Standard version:

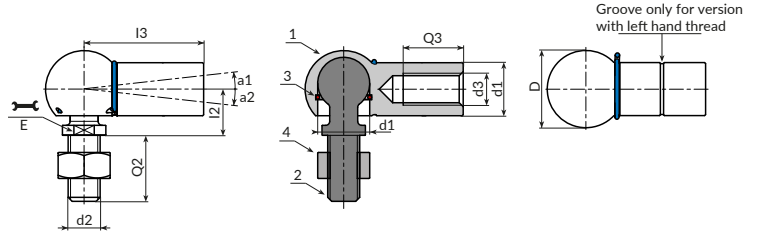
Right-hand thread (thread tolerance 6H).

Version SX (LH):

Left-hand thread (thread tolerance 6H). Identifiable by the groove on the joint.

Special requests:

- None.



Version 719 - joint with standard thread

Art.	d2 _{6g}	d3 _{6H}	D	E	l2	l3	Q2	d1 _{h9-H9}	Q3	a1	a2	g
Y71908.VZM05	M5	M5	12,8	7	9	22	10,2	8	10,2	18	10	15
Y71910.VZM06	M6	M6	14,8	8	11	25	11,5	10	11,5	18	15	25
Y71913.VZM08	M8	M8	19,3	11	13	30	14	13	14	18	15	53
Y71916.VZM10	M10	M10	24	13	16	35	15,5	16	15,5	18	15	104
Y71919.VZM14X1.5	M14X1,5	M14X1,5	30	16	20	45	21,5	19	21,5	18	15	221

Version 719 - joint with LH thread

Art.	d2 _{6g}	d3 _{6H}	D	E	l2	l3	Q2	d1 _{h9-H9}	Q3	a1	a2	g
Y71908.VZM05SX	M5	M5 SX	12,8	7	9	22	10,2	8	10,2	18	10	15
Y71910.VZM06SX	M6	M6 SX	14,8	8	11	25	11,5	10	11,5	18	15	25
Y71913.VZM08SX	M8	M8 SX	19,3	11	13	30	14	13	14	18	15	53
Y71916.VZM10SX	M10	M10 SX	24	13	16	35	15,5	16	15,5	18	15	104
Y71919.VZM14X1.5SX	M14X1,5	M14X1,5 SX	30	16	20	45	21,5	19	21,5	18	15	221

Version 719CIN - joint with standard thread - STAINLESS STEEL

INOX

Art.	d2 _{6g}	d3 _{6H}	D	E	l2	l3	Q2	d1 _{h9-H9}	Q3	a1	a2	g
Y71908.INM05CIN	M5	M5	12,8	7	9	22	10,2	8	10,2	18	10	15
Y71910.INM06CIN	M6	M6	14,8	8	11	25	11,5	10	11,5	18	15	25
Y71913.INM08CIN	M8	M8	19,3	11	13	30	14	13	14	18	15	53
Y71916.INM10CIN	M10	M10	24	13	16	35	15,5	16	15,5	18	15	104
Y71919.INM14X1.5CIN	M14X1,5	M14X1,5	30	16	20	45	21,5	19	21,5	18	15	221

Version 719CIN - joint with LH thread - STAINLESS STEEL

INOX

Art.	d2 _{6g}	d3 _{6H}	D	E	l2	l3	Q2	d1 _{h9-H9}	Q3	a1	a2	g
Y71908.INM05SXCIN	M5	M5 SX	12,8	7	9	22	10,2	8	10,2	18	10	15
Y71910.INM06SXCIN	M6	M6 SX	14,8	8	11	25	11,5	10	11,5	18	15	25
Y71913.INM08SXCIN	M8	M8 SX	19,3	11	13	30	14	13	14	18	15	53
Y71916.INM10SXCIN	M10	M10 SX	24	13	16	35	15,5	16	15,5	18	15	104
Y71919.INM14X1.5SXCIN	M14X1,5	M14X1,5 SX	30	16	20	45	21,5	19	21,5	18	15	221

Y099



DIN 99 - L and N DESIGN - STEEL FIXED LEVER WITH TAPER ARM

Materials:

Turned free-cutting steel body.

Surface finish:

Fine turned finish.

Colour:

Black-oxide treated.

Hole:

version VBM:

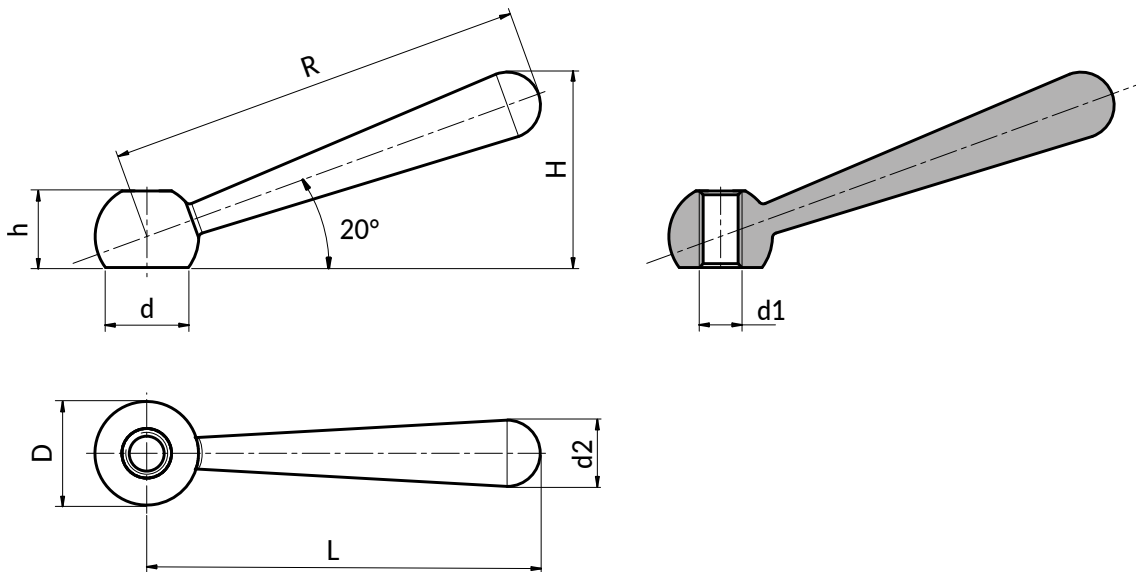
Threaded through hole (thread tolerance 6H).

version VBD:

Smooth through hole (hole tolerance 7H).

Special requests:

- None.



Version Y099 VBM - N Design with threaded hole

art.	R	L	D	d	d2	h	H	d1 _{6H}	
Y099063.VBM08	63	60	16	12.5	10	12	30	M8	36
Y099080.VBM10	80	76	20	16	13	14.5	38	M10	74
Y099100.VBM12	100	95	25	20	16	18.5	47	M12	141
Y099125.VBM16	125	119	32	25	20	24	59.5	M16	278
Y099160.VBM20	160	152	40	31	25	30	75.5	M20	564

Version Y099 VBD - L Design with smooth hole

art.	R	L	D	d	d2	h	H	d1 _{7H}	
Y099063.VBD08	63	60	16	12.5	10	12	30	08	36
Y099080.VBD10	80	76	20	16	13	14.5	38	10	74
Y099100.VBD12	100	95	25	20	16	18.5	47	12	141
Y099125.VBD16	125	119	32	25	20	24	59.5	16	278
Y099160.VBD20	160	152	40	31	25	30	75.5	20	564

Y099PIN



DIN 99 - L and N DESIGN - STAINLESS STEEL FIXED LEVER WITH TAPER ARM

INOX

Materials:

Turned stainless steel body (Aisi 303).

Surface finish:

Sandblasted satin finish.

Colour:

Natural.

Hole:

version INM:

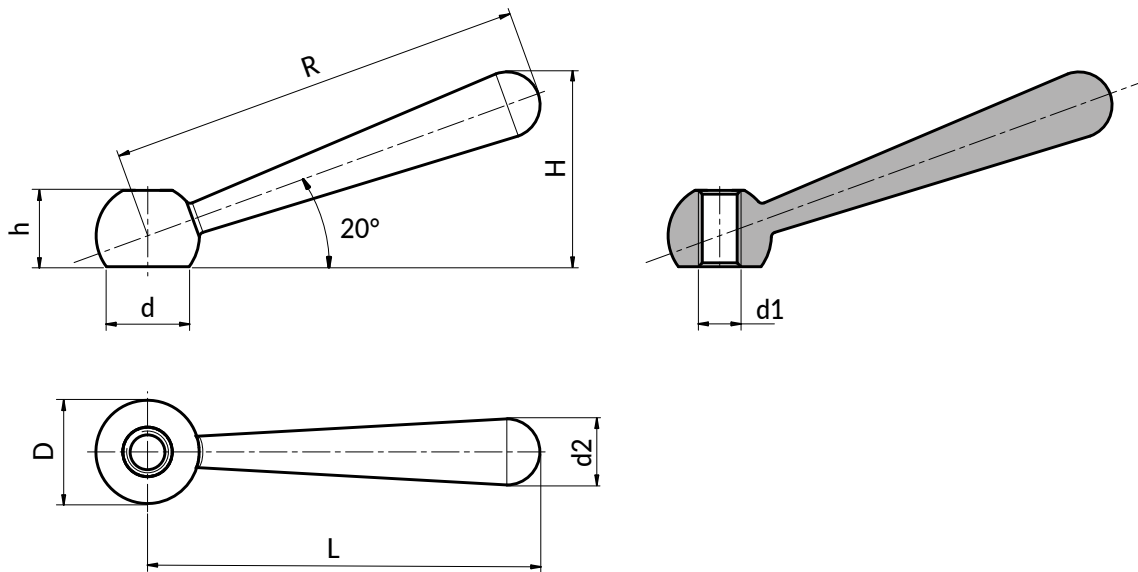
Threaded through hole (thread tolerance 6H).

version IND:

Smooth through hole (hole tolerance 7H).

Special requests:

- None.



Version Y099 INM - N Design with threaded hole

art.	R	L	D	d	d2	h	H	d1 _{6H}	g
Y099063.VBM08	63	60	16	12.5	10	12	30	M8	36
Y099080.INM08PIN	80	76	20	16	13	14.5	38	M10	74
Y099100.INM12PIN	100	95	25	20	16	18.5	47	M12	141
Y099125.INM16PIN	125	119	32	25	20	24	59.5	M16	278
Y099160.INM20PIN	160	152	40	31	25	30	75.5	M20	564

Version Y099 IND - L Design with smooth hole

art.	R	L	D	d	d2	h	H	d1 _{7H}	g
Y099063.IND08PIN	63	60	16	12.5	10	12	30	08	36
Y099080.IND10PIN	80	76	20	16	13	14.5	38	10	74
Y099100.IND12PIN	100	95	25	20	16	18.5	47	12	141
Y099125.IND16PIN	125	119	32	25	20	24	59.5	16	278
Y099160.IND20PIN	160	152	40	31	25	30	75.5	20	564

Y319

DIN 6319 ed. 10/01 - STEEL CONVEX C DESIGN WASHER



Materials:

Y319

Case-hardened steel.

Y319PIN:

Stainless steel (Aisi 303).

Surface finish:

Y319

Smooth, case-hardened.

Y319PIN:

Natural, untreated.

Colour:

Y319

Standard black-oxide treatment.

Y319PIN:

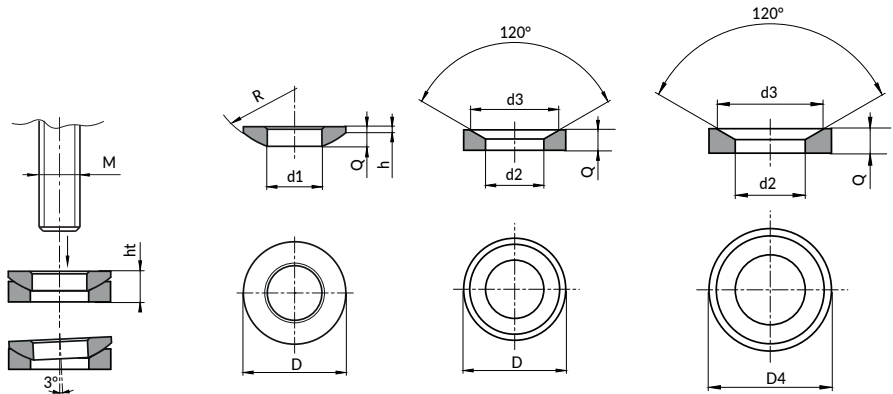
Natural.

Special requests:

- None.

Notes:

Attention: convex washer Y319 must be used with concave washer Y320 or Y321 (to be ordered separately).



Forma C
Y319

Forma D
Y320

Forma G
Y321

Version DIN 6319 C Design - black-oxide treated steel convex washer

🛒	Art.	D	R	h	d1H13	M	Q	Maximum permissible static load kN	g
●	Y319010.SD05.25	10.5	7.5	0.4	5.25	M05	2	-	0.7
●	Y319012.SD06.4	12	9	0.7	6.4	M06	2.3	9	1
●	Y319017.SD08.4	17	12	0.6	8.4	M08	3.2	17	2.8
●	Y319021.SD10.5	21	15	0.8	10.5	M10	4	26	5
●	Y319024.SD13	24	17	1.1	13	M12	4.6	38	8
●	Y319028.SD15	28	22	1.2	15	M14	5	53	11
●	Y319030.SD17	30	22	1.3	17	M16	5.3	73	13
●	Y319036.SD21	36	27	2	21	M20	6.3	117	23
●	Y319044.SD25	44	32	2.4	25	M24	8.2	168	21
●	Y319056.SD31	56	41	3.6	31	M30	11.2	269	103
●	Y319068.SD37	68	50	4.6	37	M36	14	394	188
●	Y319078.SD43	78	58	6.5	43	M42	17	542	316
●	Y319092.SD50	92	67	8	50	M48	21	714	549
●	Y319103.SD58	103	79	9.5	58	M56	23	-	748
●	Y319120.SD66	120	93	12	66	M64	27	-	1239

Version DIN 6319 C Design - stainless steel (Aisi 303) convex washer



🛒	Art.	D	R	h	d1H13	M	Q	Maximum permissible static load kN	g
●	Y319012.ID06.4PIN	12	9	0.7	6.4	M06	2.3	6	1
●	Y319017.ID08.4PIN	17	12	0.6	8.4	M08	3.2	12	2.8
●	Y319021.ID10.5PIN	21	15	0.8	10.5	M10	4	16	5
●	Y319024.ID13PIN	24	17	1.1	13	M12	4.6	24	7
●	Y319030.ID17PIN	30	22	1.3	17	M16	5.3	45	13
●	Y319036.ID21PIN	36	27	2	21	M20	6.3	71	24
●	Y319044.ID25PIN	44	32	2.4	25	M24	8.2	105	44
●	Y319056.ID31PIN	56	41	3.6	31	M30	11.2	191	106
●	Y319068.ID37PIN	68	50	4.6	37	M36	14	-	194
●	Y319078.ID43PIN	78	58	6.5	43	M42	17	-	311
●	Y319092.ID50PIN	92	67	8	50	M48	21	-	550



Y320

DIN 6319 ed. 10/01 - CONCAVE D DESIGN WASHER



Materials:

Y320:

Case-hardened steel.

Y320PIN:

Stainless steel (Aisi 303).

Surface finish:

Y320:

Smooth, case-hardened.

Y320PIN:

Natural, untreated.

Colour:

Y320:

Standard black-oxide treatment.

Y320PIN:

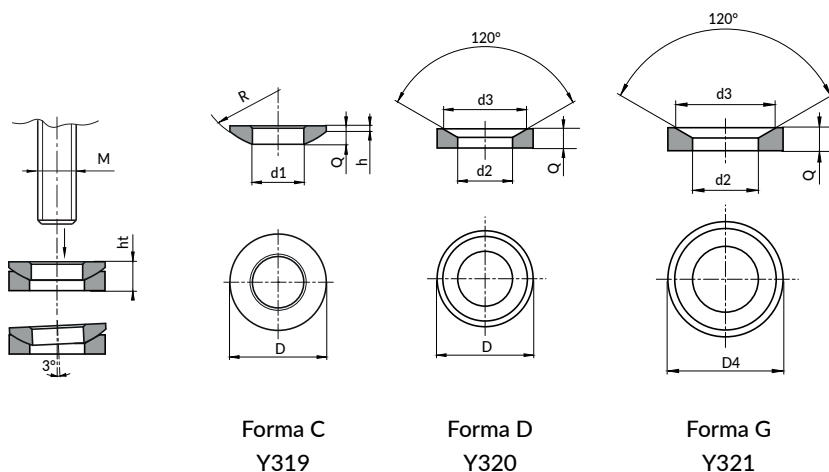
Natural.

Special requests:

- None.

Notes:

Attention: concave washer Y320 must be used with convex washer Y319 (to be ordered separately).



Version DIN 6319 D Design - black-oxide treated steel concave washer

Art.	D	d3	h4 (Y319+Y320)	d2H13	M	Q	Maximum permissible static load kN	g
● Y320010.SD06	10.5	9.25	3.1	6	M05	2.1	-	0.8
● Y320012.SD07.1	12	11	4	7.1	M06	2.8	9	1.4
● Y320017.SD09.6	17	14.5	5.6	9.6	M08	3.5	17	3.6
● Y320021.SD12	21	18.5	6.3	12	M10	4.2	26	6.5
● Y320024.SD14.2	24	20	8	14.2	M12	5	38	10
● Y320028.SD16.5	28	24.8	8.2	16.5	M14	5.6	53	15
● Y320030.SD19	30	26	9.3	19	M16	6.2	73	18
● Y320036.SD23.2	36	31	11.6	23.2	M20	7.5	117	30
● Y320044.SD28	44	37	15	28	M24	9.5	168	61
● Y320056.SD35	56	49	18.9	35	M30	12	269	124
● Y320068.SD42	68	60	23.3	42	M36	15	394	232
● Y320078.SD49	78	70	28.3	49	M42	18	542	360
● Y320092.SD56	92	82	35.2	56	M48	22	714	633
● Y320103.SD65	103	92	39.7	65	M56	25	-	873
● Y320120.SD75	120	110	46.5	75	M64	30	-	1422

Version DIN 6319 D Design - stainless steel (Aisi 303) concave washer



Art.	D	d3	h4 (Y319+Y320)	d2H13	M	Q	Maximum permissible static load kN	g
● Y320012.SD07.1PIN	12	11	4	7.1	M06	2.8	6	1.4
● Y320017.ID09.6PIN	17	14.5	5.6	9.6	M08	3.5	12	3.6
● Y320021.ID12PIN	21	18.5	6.3	12	M10	4.2	16	6.5
● Y320024.ID14.2PIN	24	20	8	14.2	M12	5	24	10
● Y320030.ID19PIN	30	26	9.3	19	M16	6.2	45	18
● Y320036.ID23.2PIN	36	31	11.6	23.2	M20	7.5	71	30
● Y320044.ID28PIN	44	37	15	28	M24	9.5	105	61
● Y320056.ID35PIN	56	49	18.9	35	M30	12	191	124
● Y320068.ID42PIN	68	60	23.3	42	M36	15	-	232
● Y320078.ID49PIN	78	70	28.3	49	M42	18	-	360
● Y320092.ID56PIN	92	82	35.2	56	M48	22	-	633

Y321



DIN 6319 ed. 10/01 - STAINLESS STEEL CONCAVE G DESIGN WASHER

Materials:

Y321:

Quenched and tempered steel.

Y321PIN:

Stainless steel (Aisi 303).

Surface finish:

Y321:

Heat treated HV 390± 40.

Y321PIN:

Natural, untreated.

Colour:

Y321:

Standard black-oxide treatment.

Y321PIN:

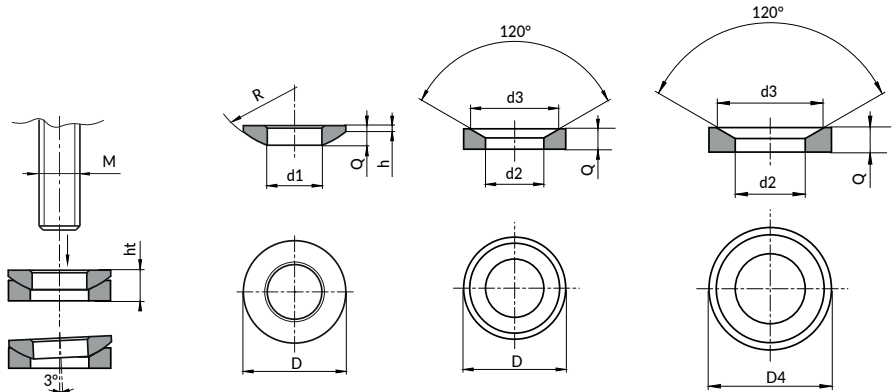
Natural.

Special requests:

- None.

Notes:

Attention: concave washer Y321 must be used with convex washer Y319 (to be ordered separately).



Forma C
Y319

Forma D
Y320

Forma G
Y321

Version DIN 6319 G Design - black-oxide treated steel concave washer

Art.	D	d3	h4 (Y319+Y321)	d2H13	M	Q	Maximum permissible static load kN	g
Y321015.SD06	15	9.25	3.5	6	M05	2.5	-	3.6
Y321017.SD07.1	17	11	5.2	7.1	M06	4	9	3.6
Y321024.SD09.6	24	14.5	6.8	9.6	M08	5	17	10
Y321030.SD12	30	18.5	7.1	12	M10	5	26	18
Y321036.SD14.2	36	20	9	14.2	M12	6	38	30
Y321040.SD16.5	40	24.8	8.6	16.5	M14	6	53	38
Y321044.SD19	44	26	10.1	19	M16	7	73	61
Y321050.SD23.2	50	31	12	23.2	M20	8	117	124
Y321060.SD28	60	37	15.5	28	M24	10	168	232
Y321068.SD35	68	49	18.7	35	M30	12	269	360
Y321080.SD42	80	60	20.3	42	M36	12	394	633

Version DIN 6319 G Design - stainless steel (Aisi 303) concave washer



Art.	D	d3	h4 (Y319+Y321)	d2H13	M	Q	Maximum permissible static load kN	g
Y321017.ID07.1PIN	17	11	5.2	7.1	M06	4	6	3.6
Y321024.ID09.6PIN	24	14.5	6.8	9.6	M08	5	12	10
Y321030.ID12PIN	30	18.5	7.1	12	M10	5	16	18
Y321036.ID14.2PIN	36	20	9	14.2	M12	6	24	30
Y321044.ID19PIN	44	26	10.1	19	M16	7	45	61
Y321050.ID23.2PIN	50	31	12	23.2	M20	8	71	124
Y321060.ID28PIN	60	37	15.5	28	M24	10	105	232
Y321068.ID35PIN	68	49	18.7	35	M30	12	191	360



Y442

NEW

+200°
-40°

AVP

RoHS
COMPLIANT

STEEL EYELET END FITTING

Materials:

Steel with strength class 5.8.

Surface finish:

Fine turned finish.

Colour:

Standard black-oxide treatment.

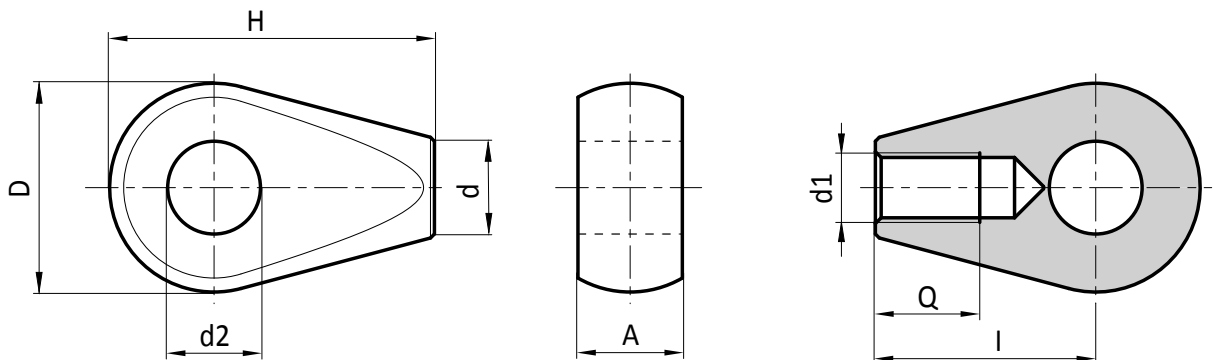
Hole:

(d1) Female threaded hole machined from solid metal (thread tolerance 6H).

(d2) Smooth through hole machined from solid metal (hole tolerance H7).

Special Requests:

- On request the product can be supplied with galvanised finish, (code no.: Y442018.VZM06 - attention: hole tolerance H9).



	art.	D -0,3	H	A -0,15	I	d	d2 H7	d1 6H	Q +1	g
●	Y44218.SBM06	18	37	9	19	8,5	7,1	M6	9	1,4

Y705-Y706



DIN 705 - STAINLESS STEEL LOCK RING NUT WITH STEEL GRUB SCREW

Materials:
Standard steel.

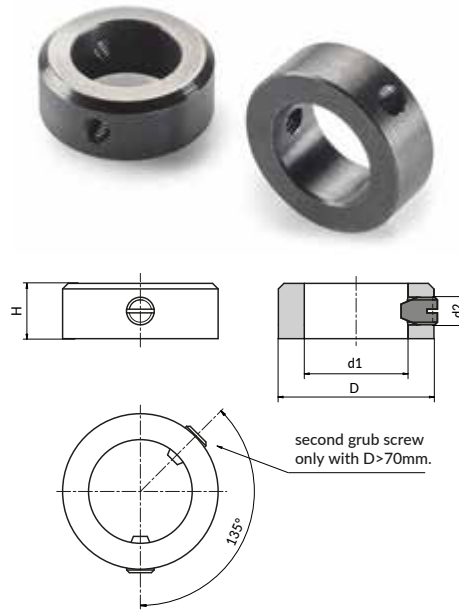
Surface finish:
Smooth, turned.

Colour:
Black-oxide treatment.

Grub screw:
Y705:
Slotted grub screw DIN 553.
Y706:
Hex socket head grub screw DIN 914.

Attention:
second grub screw added starting from diameter D=>70 mm.

Special requests:
• None.



Version Y705: With slotted grub screw DIN 553 - Version Y706: With hex socket head grub screw DIN 914

Art.	Art.	Dh13	Hjs14	d2	d1H8	g
Y705007.VBD003	Y706007.VBD003	7	5	M02	3	1.2
Y705008.VBD004	Y706008.VBD004	8	5	M02.5	4	1.4
Y705010.VBD005	Y706010.VBD005	10	6	M03	5	2.7
Y705012.VBD006	Y706012.VBD006	12	8	M04	6	5
Y705012.VBD007	Y706012.VBD007	12	8	M04	7	5
Y705016.VBD008	Y706016.VBD008	16	8	M04	8	9
Y705018.VBD009	Y706018.VBD009	18	10	M05	9	14.5
Y705020.VBD010	Y706020.VBD010	20	10	M05	10	18
Y705020.VBD011	Y706020.VBD011	20	10	M05	11	16.5
Y705022.VBD012	Y706022.VBD012	22	12	M06	12	24
Y705025.VBD014	Y706025.VBD014	25	12	M06	14	30.5
Y705025.VBD015	Y706025.VBD015	25	12	M06	15	28
Y705028.VBD016	Y706028.VBD016	28	12	M06	16	37
Y705032.VBD018	Y706032.VBD018	32	14	M06	18	58
Y705032.VBD020	Y706032.VBD020	32	14	M06	20	52
Y705040.VBD024	Y706040.VBD024	40	16	M08	24	98
Y705040.VBD025	Y706040.VBD025	40	16	M08	25	94
Y705040.VBD026	Y706040.VBD026	40	16	M08	26	86.5
Y705045.VBD028	Y706045.VBD028	45	16	M08	28	120
Y705045.VBD030	Y706045.VBD030	45	16	M08	30	107
Y705050.VBD032	Y706050.VBD032	50	16	M08	32	142
Y705056.VBD035	Y706056.VBD035	56	16	M08	35	184
Y705056.VBD036	Y706056.VBD036	56	16	M08	36	177
Y705056.VBD038	Y706056.VBD038	56	16	M08	38	163
Y705063.VBD040	Y706063.VBD040	63	18	M10	40	256
Y705063.VBD042	Y706063.VBD042	63	18	M10	42	240
Y705070.VBD045	Y706070.VBD045	70	18	M10	45	313
Y705070.VBD048	Y706070.VBD048	70	18	M10	48	313
Y705080.VBD050	Y706080.VBD050	80	18	M10	50	424
Y705080.VBD052	Y706080.VBD052	80	18	M10	52	401
Y705080.VBD055	Y706080.VBD055	80	18	M10	55	367
Y705080.VBD056	Y706080.VBD056	80	18	M10	56	362
Y705090.VBD058	Y706090.VBD058	90	20	M10	58	572
Y705090.VBD060	Y706090.VBD060	90	20	M10	60	555
Y705090.VBD063	Y706090.VBD063	90	20	M10	63	498
Y705100.VBD065	Y706100.VBD065	100	20	M10	65	702
Y705100.VBD068	Y706100.VBD068	100	20	M10	68	702
Y705100.VBD070	Y706100.VBD070	100	20	M10	70	615
Y705110.VBD072	Y706110.VBD072	110	22	M12	72	938
Y705110.VBD075	Y706110.VBD075	110	22	M12	75	878
Y705110.VBD080	Y706110.VBD080	110	22	M12	80	773
Y705125.VBD085	Y706125.VBD085	125	22	M12	85	1139
Y705125.VBD090	Y706125.VBD090	125	22	M12	90	1021
Y705140.VB100	Y706140.VBD100	140	25	M12	100	1480

Y705PIN-Y706PIN



DIN 705 - STAINLESS STEEL LOCK RING NUT WITH STAINLESS STEEL GRUB SCREW

INOX

Materials:

Stainless steel (Aisi 303).

Surface finish:

Smooth, turned.

Colour:

Natural.

Grub screw:

Y705PIN:

Slotted grub screw DIN 553. Stainless steel (Aisi 304).

Y706PIN:

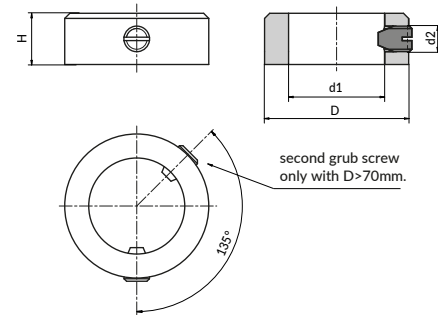
Hex socket head grub screw DIN 914. Stainless steel (Aisi 304).

Attention:

second grub screw added starting from diameter D=>70 mm.

Special requests:

- None.



Version Y705PIN: With slotted grub screw DIN 553 - Version Y706PIN: With hex socket head grub screw DIN 914

Art.	Art.	Dh13	Hjs14	d2	d1H8	g
Y705007.IND003PIN	Y706007.IND003PIN	7	5	M02	3	1.2
Y705008.IND004PIN	Y706008.IND004PIN	8	5	M02.5	4	1.4
Y705010.IND005PIN	Y706010.IND005PIN	10	6	M03	5	2.7
Y705012.IND007PIN	Y706012.IND007PIN	12	8	M04	7	5
Y705016.IND008PIN	Y706016.IND008PIN	16	8	M04	8	9
Y705018.IND009PIN	Y706018.IND009PIN	18	10	M05	9	14.5
Y705020.IND010PIN	Y706020.VBD010PIN	20	10	M05	10	18
Y705020.IND011PIN	Y706020.IND011PIN	20	10	M05	11	16.5
Y705022.IND012PIN	Y706022.IND012PIN	22	12	M06	12	24
Y705025.IND014PIN	Y706025.IND014PIN	25	12	M06	14	30.5
Y705025.IND015PIN	Y706025.IND015PIN	25	12	M06	15	28
Y705028.IND016PIN	Y706028.IND016PIN	28	12	M06	16	37
Y705032.IND018PIN	Y706032.IND018PIN	32	14	M06	18	58
Y705032.IND020PIN	Y706032.IND020PIN	32	14	M06	20	52
Y705040.IND024PIN	Y706040.IND024PIN	40	16	M08	24	98
Y705040.IND025PIN	Y706040.IND025PIN	40	16	M08	25	94
Y705040.IND026PIN	Y706040.IND026PIN	40	16	M08	26	86.5
Y705045.IND028PIN	Y706045.IND028PIN	45	16	M08	28	120
Y705045.IND030PIN	Y706045.IND030PIN	45	16	M08	30	107
Y705050.IND032PIN	Y706050.IND032PIN	50	16	M08	32	142
Y705056.IND035PIN	Y706056.IND035PIN	56	16	M08	35	184
Y705056.IND036PIN	Y706056.IND036PIN	56	16	M08	36	177
Y705056.IND038PIN	Y706056.IND038PIN	56	16	M08	38	163
Y705063.IND040PIN	Y706063.IND040PIN	63	18	M10	40	256
Y705063.IND042PIN	Y706063.IND042PIN	63	18	M10	42	240
Y705070.IND045PIN	Y706070.IND045PIN	70	18	M10	45	313
Y705070.IND048PIN	Y706070.IND048PIN	70	18	M10	48	313
Y705080.IND050PIN	Y706080.IND050PIN	80	18	M10	50	424
Y705080.IND052PIN	Y706080.IND052PIN	80	18	M10	52	401
Y705080.IND055PIN	Y706080.IND055PIN	80	18	M10	55	367
Y705080.IND056PIN	Y706080.IND056PIN	80	18	M10	56	362
Y705090.IND058PIN	Y706090.IND058PIN	90	20	M10	58	572
Y705090.IND060PIN	Y706090.IND060PIN	90	20	M10	60	555
Y705090.IND063PIN	Y706090.IND063PIN	90	20	M10	63	498
Y705100.IND065PIN	Y706100.IND065PIN	100	20	M10	65	702
Y705100.IND068PIN	Y706100.IND068PIN	100	20	M10	68	702
Y705100.IND070PIN	Y706100.IND070PIN	100	20	M10	70	615
Y705110.IND072PIN	Y706110.IND072PIN	110	22	M12	72	938
Y705110.IND075PIN	Y706110.IND075PIN	110	22	M12	75	878
Y705110.IND080PIN	Y706110.IND080PIN	110	22	M12	80	773
Y705125.IND085PIN	Y706125.IND085PIN	125	22	M12	85	1139
Y705125.IND090PIN	Y706125.IND090PIN	125	22	M12	90	1021
Y705140.IND100PIN	Y706140.IND100PIN	140	25	M12	100	1480

Y708

TWO-PIECE SHAFT COLLAR



Materials (1):

Y708:

Turned free-cutting steel.

Y708PIN:

Turned stainless steel (Aisi 303).

Y708AND:

Turned aluminium (Al 6060).

Surface finish:

Fine turned.

Colour:

Y708:

Standard black-oxide treatment.

Y708PIN:

Natural.

Y708AND:

Natural.

Fixing screws (2):

Y709:

No. 1 black-oxide treated steel socket head screw, class 12.9 DIN 912

Y709PIN - Y710AND :

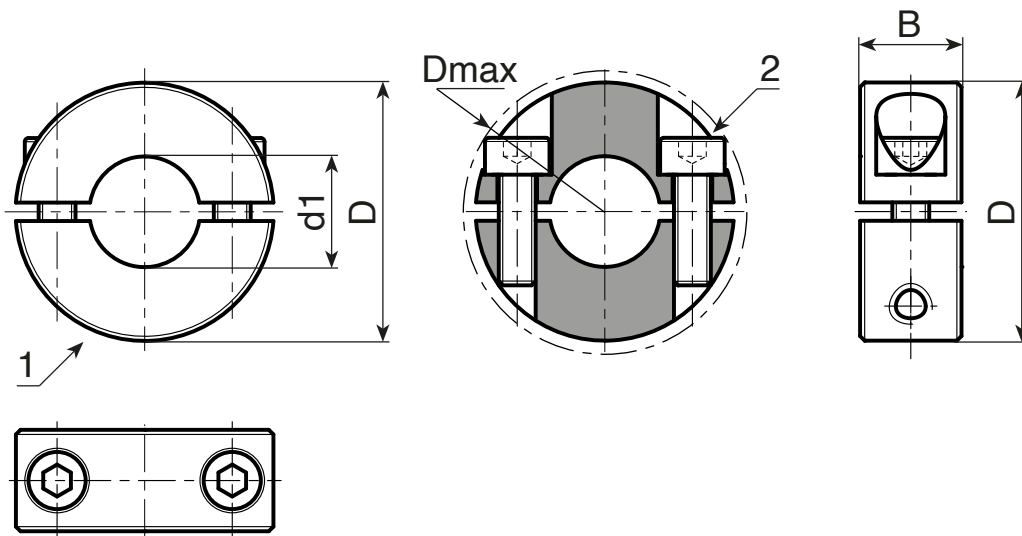
No. 1 stainless steel socket head screw (Aisi 304) DIN 912.

ATTENTION:

We recommend making the shaft with a tolerance less than h11.

Special requests:

- None.



Version Y708: Black-oxide treated steel shaft collars

Art.	D	Dmax	B	d1	DIN 912	g
Y708016.VBD04	16	20.7	9	4	M03x8	12.5
Y708016.VBD05	16	20.7	9	5	M03x8	12.7
Y708016.VBD06	16	20.7	9	6	M03x8	10.3
Y708018.VBD08	18	22.4	9	8	M03x8	14
Y708024.VBD10	24	26	9	10	M03x10	22
Y708028.VBD12	28	31.8	11	12	M04x12	37
Y708034.VBD15	34	39.4	13	15	M05x16	61.5
Y708034.VBD16	34	39.4	13	16	M05x16	62
Y708036.VBD18	36	41.1	13	18	M05x16	66
Y708040.VBD20	40	46.4	15	20	M06x18	99
Y708042.VBD22	42	48.1	15	22	M06x18	105
Y708045.VBD25	45	50.8	15	25	M06x18	116
Y708048.VBD28	48	53.7	15	28	M06x18	123
Y708054.VBD30	54	58.6	15	30	M06x18	166
Y708060.VBD40	60	65	15	40	M06x18	166
Y708078.VBD50	78	87	19	50	M08x25	390

Y708

TWO-PIECE SHAFT COLLAR



INOX

Version Y708PIN: Stainless steel (Aisi 303) shaft collars

Art.	D	Dmax	B	d1	DIN 912	g
Y708016.IND04PIN	16	20.7	9	4	M03x8	12
Y708016.IND05PIN	16	20.7	9	5	M03x8	11.5
Y708016.IND06PIN	16	20.7	9	6	M03x8	9.5
Y708018.IND08PIN	18	22.4	9	8	M03x8	12
Y708024.IND10PIN	24	26	9	10	M03x10	22
Y708028.IND12PIN	28	31.8	11	12	M04x12	37
Y708034.IND15PIN	34	39.4	13	15	M05x16	65
Y708034.IND16PIN	34	39.4	13	16	M05x16	63.5
Y708036.IND18PIN	36	41.1	13	18	M05x16	69.5
Y708040.IND20PIN	40	46.4	15	20	M06x18	99
Y708042.IND22PIN	42	48.1	15	22	M06x18	107
Y708045.IND25PIN	45	50.8	15	25	M06x18	115
Y708048.IND28PIN	48	53.7	15	28	M06x18	127
Y708054.IND30PIN	54	58.6	15	30	M06x18	169
Y708060.IND40PIN	60	65	15	40	M06x18	166
Y708078.IND50PIN	78	87	19	50	M08x25	392

Al

Version Y708AND: Natural aluminium shaft collars

Art.	D	Dmax	B	d1	DIN 912	g
Y708016.AND04	16	20.7	9	4	M03x8	5.5
Y708016.AND05	16	20.7	9	5	M03x8	5.3
Y708016.AND06	16	20.7	9	6	M03x8	5
Y708018.AND08	18	22.4	9	8	M03x8	5.5
Y708024.AND10	24	26	9	10	M03x10	9.3
Y708028.AND12	28	31.8	11	12	M04x12	15.5
Y708034.AND15	34	39.4	13	15	M05x16	28
Y708034.AND16	34	39.4	13	16	M05x16	28
Y708036.AND18	36	41.1	13	18	M05x16	30
Y708040.AND20	40	46.4	15	20	M06x18	43
Y708042.AND22	42	48.1	15	22	M06x18	45
Y708045.AND25	45	50.8	15	25	M06x18	47
Y708048.AND28	48	53.7	15	28	M06x18	51.5
Y708054.AND30	54	58.6	15	30	M06x18	67
Y708060.AND40	60	65	15	40	M06x18	66
Y708078.AND50	78	87	19	50	M08x25	156

Y709

SINGLE SPLIT SHAFT COLLAR - A DESIGN



Materials (1):

Y709:

Turned free-cutting steel.

Y709PIN:

Turned stainless steel (Aisi 303).

Y709AND:

Turned aluminium (Al 6060).

Surface finish:

Fine turned.

Colour:

Y709:

Standard black-oxide treatment.

Y709PIN:

Natural.

Y709AND:

Natural.

Fixing screws (2):

Y709:

No. 1 black-oxide treated steel socket head screw, class 12.9 DIN 912

Y709PIN - Y709AND:

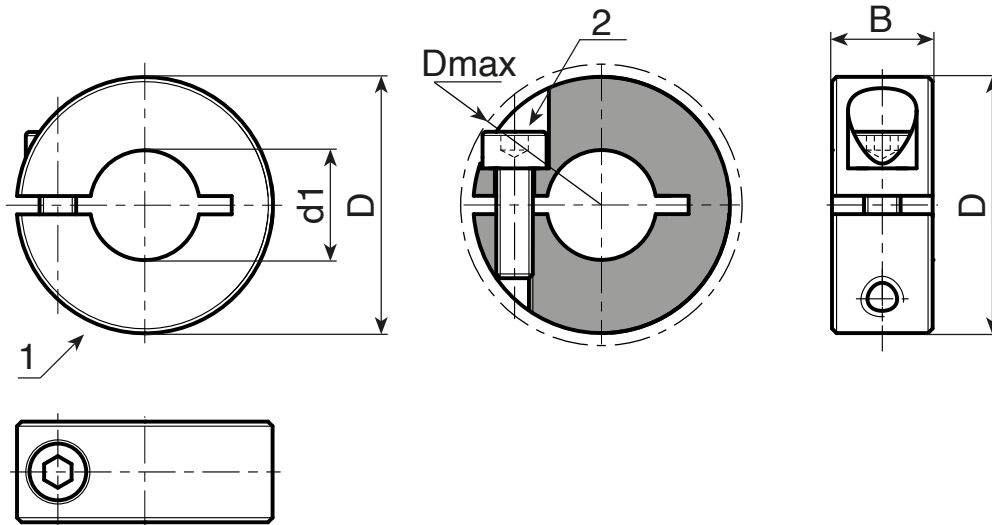
No. 1 stainless steel socket head screw (Aisi 304) DIN 912.

ATTENTION:

We recommend making the shaft with a tolerance less than h11.

Special requests:

- None.



Version Y709: Black-oxide treated steel shaft collars

Art.	D	Dmax	B	d1	DIN 912	g
Y709016.VBD04	16	20.7	9	4	M03x8	13.5
Y709016.VBD05	16	20.7	9	5	M03x8	11.5
Y709016.VBD06	16	20.7	9	6	M03x8	10.8
Y709018.VBD08	18	22.4	9	8	M03x8	12.8
Y709024.VBD10	24	26	9	10	M03x10	23
Y709028.VBD12	28	31.8	11	12	M04x12	39
Y709034.VBD15	34	39.4	13	15	M05x16	69
Y709034.VBD16	34	39.4	13	16	M05x16	65
Y709036.VBD18	36	41.1	13	18	M05x16	70.5
Y709040.VBD20	40	46.4	15	20	M06x18	103
Y709042.VBD22	42	48.1	15	22	M06x18	102
Y709045.VBD25	45	50.8	15	25	M06x18	121
Y709048.VBD28	48	53.7	15	28	M06x18	132
Y709054.VBD30	54	58.6	15	30	M06x18	174
Y709060.VBD40	60	65	15	40	M06x18	171
Y709078.VBD50	78	87	19	50	M08x25	400

Y709

SINGLE SPLIT SHAFT COLLAR - A DESIGN



AVP

Aisi
303

AI



INOX

Version Y709 PIN: Stainless steel (Aisi 303) shaft collars

Art.	D	Dmax	B	d1	DIN 912	g
Y709016.IND04PIN	16	20.7	9	4	M03x8	13.5
Y709016.IND05PIN	16	20.7	9	5	M03x8	11.5
Y709016.IND06PIN	16	20.7	9	6	M03x8	10.8
Y709018.IND08PIN	18	22.4	9	8	M03x8	12.8
Y709024.IND10PIN	24	26	9	10	M03x10	23
Y709028.IND12PIN	28	31.8	11	12	M04x12	39
Y709034.IND15PIN	34	39.4	13	15	M05x16	69
Y709034.IND16PIN	34	39.4	13	16	M05x16	65
Y709036.IND18PIN	36	41.1	13	18	M05x16	70.5
Y709040.IND20PIN	40	46.4	15	20	M06x18	103
Y709042.IND22PIN	42	48.1	15	22	M06x18	102
Y709045.IND25PIN	45	50.8	15	25	M06x18	121
Y709048.IND28PIN	48	53.7	15	28	M06x18	132
Y709054.IND30PIN	54	58.6	15	30	M06x18	174
Y709060.IND40PIN	60	65	15	40	M06x18	171
Y709078.IND50PIN	78	87	19	50	M08x25	400

AI

Version Y709AN: Natural aluminium shaft collars

Art.	D	Dmax	B	d1	DIN 912	g
Y709016.AND04	16	20.7	9	4	M03x8	5.2
Y709016.AND05	16	20.7	9	5	M03x8	5
Y709016.AND06	16	20.7	9	6	M03x8	4.6
Y709018.AND08	18	22.4	9	8	M03x8	5.3
Y709024.AND10	24	26	9	10	M03x10	9.2
Y709028.AND12	28	31.8	11	12	M04x12	15
Y709034.AND15	34	39.4	13	15	M05x16	27
Y709034.AND16	34	39.4	13	16	M05x16	26.5
Y709036.AND18	36	41.1	13	18	M05x16	28.5
Y709040.AND20	40	46.4	15	20	M06x18	41
Y709042.AND22	42	48.1	15	22	M06x18	42.5
Y709045.AND25	45	50.8	15	25	M06x18	45.5
Y709048.AND28	48	53.7	15	28	M06x18	50
Y709054.AND30	54	58.6	15	30	M06x18	66
Y709060.AND40	60	65	15	40	M06x18	65
Y709078.AND50	78	87	19	50	M08x25	150

Y710



SINGLE SPLIT SHAFT COLLAR - B DESIGN - (MORE CLAMPING FORCE +15%)

Materials (1):

Y710:

Turned free-cutting steel.

Y710PIN:

Turned stainless steel (Aisi 303).

Y710AND:

Turned aluminium (Al 6060).

Surface finish:

Fine turned.

Colour:

Y710:

Standard black-oxide treatment.

Y710PIN - Y710AND:

Natural.

Y710AND:

Natural.

Fixing screws (2):

Y710:

No. 1 black-oxide treated steel socket head screw, class 12.9 DIN 912

Y710PIN - Y710AND:

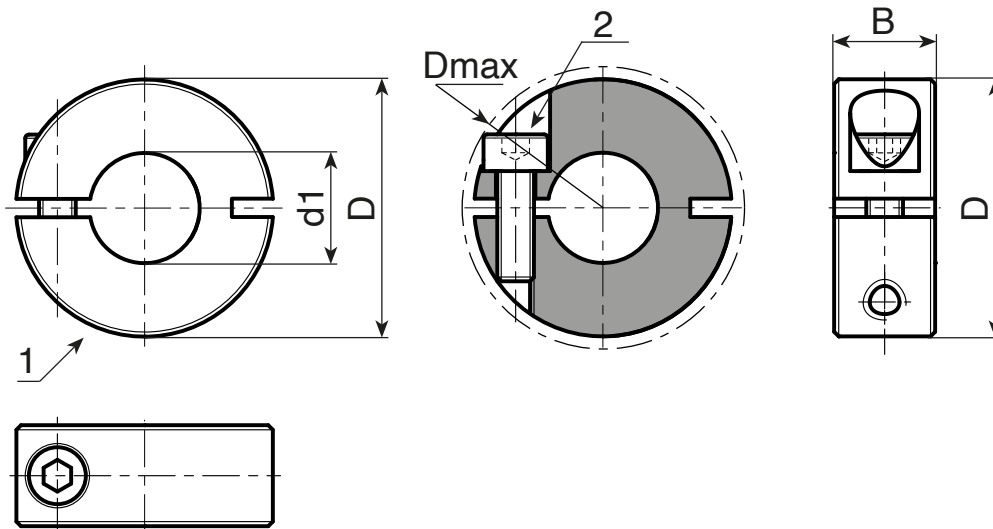
No. 1 stainless steel socket head screw (Aisi 304) DIN 912.

ATTENTION:

We recommend making the shaft with a tolerance less than h11.

Special requests:

- None.



Version Y710: Black-oxide treated steel shaft collars

Art.	D	Dmax	B	d1	DIN 912	g
Y710016.VBD04	16	20.7	9	4	M03x8	11.8
Y710016.VBD05	16	20.7	9	5	M03x8	11.4
Y710016.VBD06	16	20.7	9	6	M03x8	10.5
Y710018.VBD08	18	22.4	9	8	M03x8	13
Y710024.VBD10	24	26	9	10	M03x10	23
Y710028.VBD12	28	31.8	11	12	M04x12	39
Y710034.VBD15	34	39.4	13	15	M05x16	68.5
Y710034.VBD16	34	39.4	13	16	M05x16	64.5
Y710036.VBD18	36	41.1	13	18	M05x16	70
Y710040.VBD20	40	46.4	15	20	M06x18	103
Y710042.VBD22	42	48.1	15	22	M06x18	103
Y710045.VBD25	45	50.8	15	25	M06x18	118
Y710048.VBD28	48	53.7	15	28	M06x18	129
Y710054.VBD30	54	58.6	15	30	M06x18	175
Y710060.VBD40	60	65	15	40	M06x18	171
Y710078.VBD50	78	87	19	50	M08x25	400

Y710



AVP

Aisi 303

Al



SINGLE SPLIT SHAFT COLLAR - B DESIGN - (MORE CLAMPING FORCE +15%)



INOX

Version Y710 PIN: Stainless steel (Aisi 303) shaft collars

Art.	D	Dmax	B	d1	DIN 912	g
Y710016.IND04PIN	16	20.7	9	4	M03x8	11.8
Y710016.IND05PIN	16	20.7	9	5	M03x8	11.4
Y710016.IND06PIN	16	20.7	9	6	M03x8	10.5
Y710018.IND08PIN	18	22.4	9	8	M03x8	13
Y710024.IND10PIN	24	26	9	10	M03x10	23
Y710028.IND12PIN	28	31.8	11	12	M04x12	39
Y710034.IND15PIN	34	39.4	13	15	M05x16	68.5
Y710034.IND16PIN	34	39.4	13	16	M05x16	64.5
Y710036.IND18PIN	36	41.1	13	18	M05x16	70
Y710040.IND20PIN	40	46.4	15	20	M06x18	103
Y710042.IND22PIN	42	48.1	15	22	M06x18	109
Y710045.IND25PIN	45	50.8	15	25	M06x18	118
Y710048.IND28PIN	48	53.7	15	28	M06x18	129
Y710054.IND30PIN	54	58.6	15	30	M06x18	175
Y710060.IND40PIN	60	65	15	40	M06x18	171
Y710078.IND50PIN	78	87	19	50	M08x25	400

Al

Version Y710AN: Natural aluminium shaft collars

Art.	D	Dmax	B	d1	DIN 912	g
Y710016.AND04	16	20.7	9	4	M03x8	5.1
Y710016.AND05	16	20.7	9	5	M03x8	5
Y710016.AND06	16	20.7	9	6	M03x8	4.6
Y710018.AND08	18	22.4	9	8	M03x8	5.3
Y710024.AND10	24	26	9	10	M03x10	9.2
Y710028.AND12	28	31.8	11	12	M04x12	15
Y710034.AND15	34	39.4	13	15	M05x16	27
Y710034.AND16	34	39.4	13	16	M05x16	26.5
Y710036.AND18	36	41.1	13	18	M05x16	28.5
Y710040.AND20	40	46.4	15	20	M06x18	41
Y710042.AND22	42	48.1	15	22	M06x18	42.5
Y710045.AND25	45	50.8	15	25	M06x18	45.5
Y710048.AND28	48	53.7	15	28	M06x18	51
Y710054.AND30	54	58.6	15	30	M06x18	66
Y710060.AND40	60	65	15	40	M06x18	67
Y710078.AND50	78	87	19	50	M08x25	152

Y711

THREADED SHAFT COLLAR



Materials (1):

Y711:

Turned free-cutting steel.

Y711PIN:

Turned stainless steel (Aisi 303).

Surface finish:

Fine turned.

Colour:

Y711:

Standard black-oxide treatment.

Y711PIN:

Natural.

Fixing screws (2):

Y711:

No. 1 black-oxide treated steel socket head screw, class 12.9 DIN 912

Y711PIN:

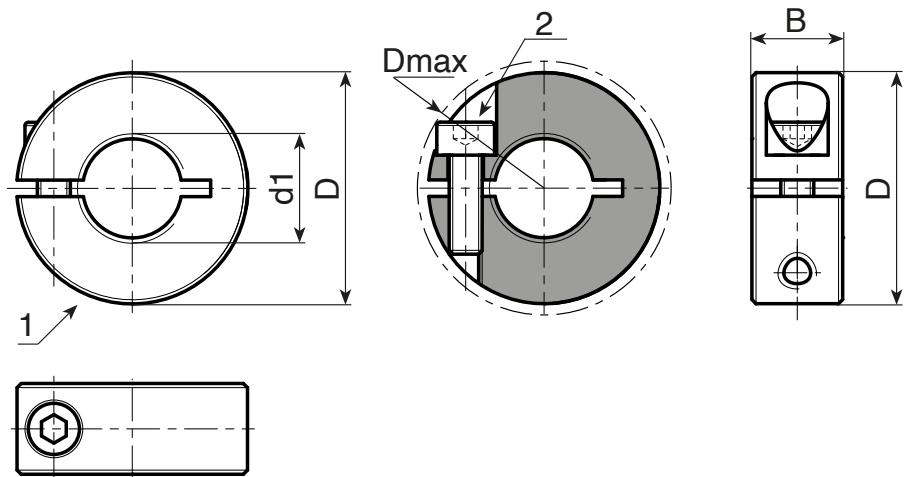
No. 1 stainless steel socket head screw (Aisi 304) DIN 912.

ATTENTION:

We recommend making the shaft with a tolerance less than h11.

Special requests:

- None.



Version Y711: Black-oxide treated steel shaft collars

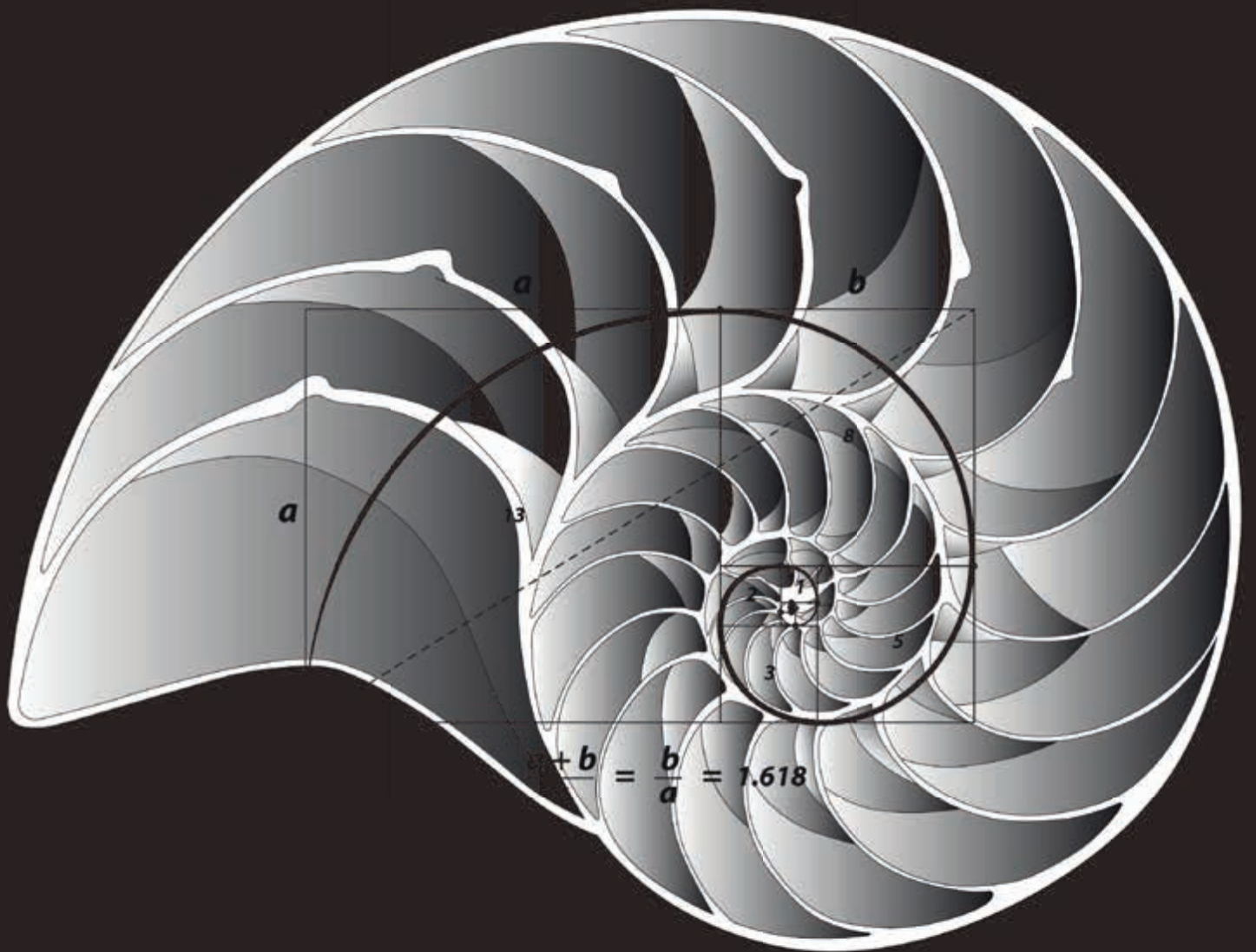
Art.	D	Dmax	B	d1	DIN 912	g
Y711016.VBM04	16	20,7	9	M4	M03x8	14
Y711016.VBM05	16	20,7	9	M5	M03x8	13,5
Y711016.VBM06	16	20,7	9	M6	M03x8	12
Y711018.VBM08	18	22,4	9	M8	M03x8	15
Y711024.VBM10	24	26	9	M10	M03x10	24.5
Y711028.VBM12	28	31,8	11	M12	M04x12	40
Y711034.VBM16	34	39,4	13	M16	M05x16	71
Y711040.VBM20	40	46,4	15	M20	M06x18	107

Version Y711 PIN: Stainless steel (Aisi 303) shaft collars

INOX

Art.	D	Dmax	B	d1	DIN 912	g
Y711016.INM04PIN	16	20,7	9	M4	M03x8	14
Y711016.INM05PIN	16	20,7	9	M5	M03x8	13,5
Y711016.INM06PIN	16	20,7	9	M6	M03x8	12
Y711018.INM08PIN	18	22,4	9	M8	M03x8	15
Y711024.INM10PIN	24	26	9	M10	M03x10	24.5
Y711028.INM12PIN	28	31,8	11	M12	M04x12	40
Y711034.INM16PIN	34	39,4	13	M16	M05x16	71
Y711040.INM20PIN	40	46,4	15	M20	M06x18	107





STYLE
AND HARMONY.



Y631



DIN 6311 - S DESIGN - STEEL BASE WITH RING FOR STUD DIN 6332

Materials:

Y631:

Case-hardened base.

(1) Harmonic steel retaining ring.

Y631 CIN:

Stainless steel base (Aisi 303).

(1) Stainless steel retaining ring (Aisi 302).

Surface finish:

Y631:

Case-hardened.

Y631 CIN:

Natural, untreated.

Colour:

Y631:

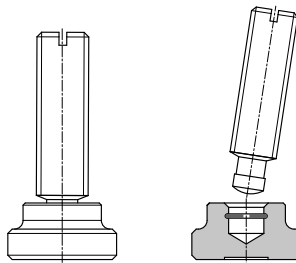
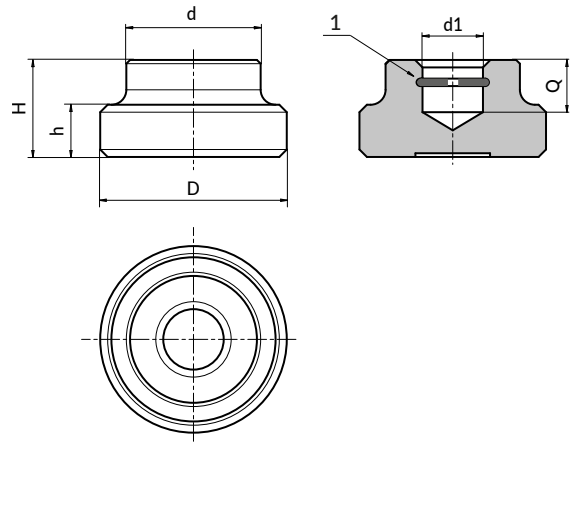
Black-oxide treatment.

Y631 CIN:

Natural.

Special requests:

- Upon request and for special quantities the base can be supplied with a low T design and a larger clamping surface.



Y631+Y633

Version Y631 - black-oxide treated steel

art.	D	d	H	h	for stud DIN 6332	d1H12	Q	g
Y631012.SBD04.6	12	10	7	2.5	M06	4.6	4	4
Y631016.SBD06.1	16	12	9	4	M08	6.1	5	9
Y631020.SBD08.1	20	15	11	5	M10	8.1	6	12
Y631025.SBD08.1	25	18	13	7	M12	8.1	7	34
Y631032.SBD12.1	32	22	15	7	M16	12.1	7.5	57
Y631040.SBD15.6	40	28	16	9	M20	15.6	8	103

Version W631 CIN - stainless steel (Aisi 303).

INOX

art.	D	d	H	h	for stud DIN 6332	d1H12	Q	g
Y631012.IND04.6CIN	12	10	7	2.5	M06	4.6	4	4
Y631016.IND06.1CIN	16	12	9	4	M08	6.1	5	9
Y631020.IND08.1CIN	20	15	11	5	M10	8.1	6	12
Y631025.IND08.1CIN	25	18	13	7	M12	8.1	7	34
Y631032.IND12.1CIN	32	22	15	7	M16	12.1	7.5	57
Y631040.IND15.6CIN	40	28	16	9	M20	15.6	8	103



Y633



DIN 6332 - THREADED STUD WITH STEEL NOSE FOR THRUST PAD DIN 6311

Materials:

Y633:

Steel threaded stud, with slot end and case-hardened nose.

Y633 CIN:

Stainless steel threaded stud (Aisi 303), with slot end and nose.

Surface finish:

Turned.

Colour:

Y633:

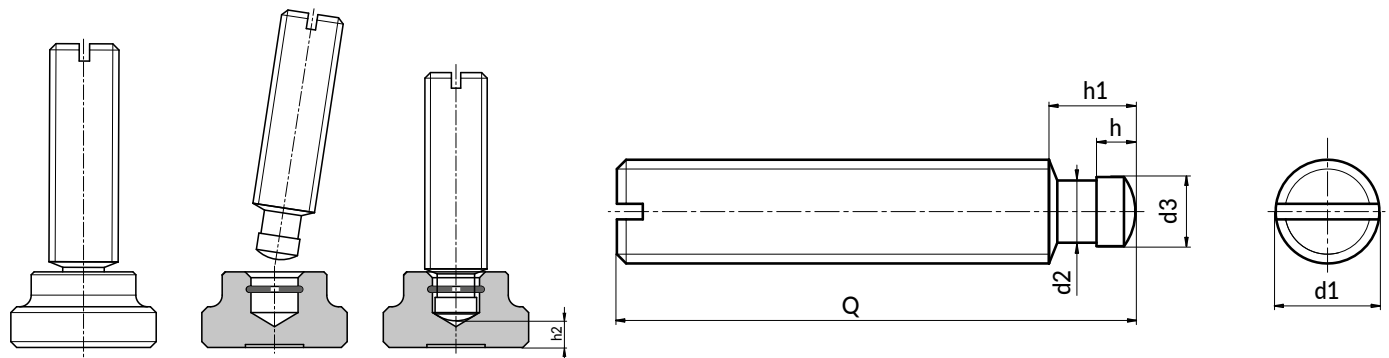
Black-oxide treated.

Y633 CIN:

Natural.

Special requests:

- None.



Y633+Y631

Version Y633 - black-oxide treated steel

art.	d1 _{6g}	d2	d3	h	h1	h2	for thrust pad DIN 6311	Q	g
Y633.SBM06X..	M6	4	4,5	2,5	6	2,2	12	030-035-040-050	4,5-5,5-6-8
Y633.SBM08X..	M8	5,4	6	3	7,5	3	16	035-040-045-050-060	10-11-13-14-17,5
Y633.SBM10X..	M10	7,2	8	4,5	9	3,6	20	050-055-060-065-080	22-24-27-28-30-37
Y633.SBM12X..	M12	7,2	8	4,5	10	4,5	25	060-065-070-080-100	36,5-41-44,6-52-65
Y633.SBM16X..	M16	11	12	5	12	5,3	32	065-070-080-100-125	77-82-99-122-154
Y633.SBM20X..	M20	14,4	15,5	5,5	14	5,6	40	080-090-100-125-150	150-170-188-239-292

Enter the selected stud length in place of the two dots . . in the item code.



Version W633 CIN - stainless steel (Aisi 303).

art.	d1 _{6g}	d2	d3	h	h1	h2	for thrust pad DIN 6311	Q	g
Y633.INM06X..CIN	M6	4	4,5	2,5	6	2,2	12	030-035-040-050	4,5-5,5-6-8
Y633.INM08X..CIN	M8	5,4	6	3	7,5	3	16	035-040-045-050-060	10-11-13-14-17,5
Y633.INM10X..CIN	M10	7,2	8	4,5	9	3,6	20	050-055-060-065-080	22-24-27-28-30-37
Y633.INM12X..CIN	M12	7,2	8	4,5	10	4,5	25	060-065-070-080-100	36,5-41-44,6-52-65
Y633.INM16X..CIN	M16	11	12	5	12	5,3	32	065-070-080-100-125	77-82-99-122-154
Y633.INM20X..CIN	M20	14,4	15,5	5,5	14	5,6	40	080-090-100-125-150	150-170-188-239-292

Enter the selected stud length in place of the two dots . . in the item code.



Y303



AVP

Aisi 303



DIN 6303 - KNURLED THUMB KNOB WITH THREADED HOLE

Materials:

Y303:

Free-cutting steel.

Y303PIN:

Stainless steel (Aisi 303).

Surface finish:

Smooth, turned.

Colour:

Y303:

Black-oxide treatment.

Y303PIN:

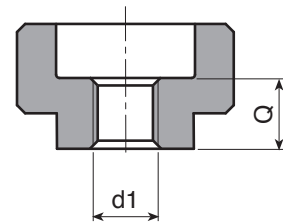
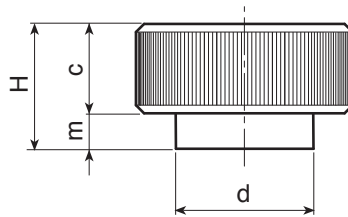
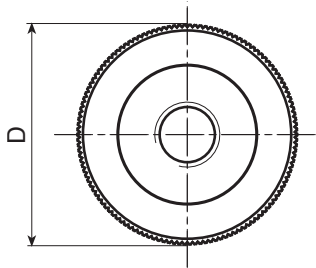
Natural.

Hole:

Threaded through hole (thread tolerance 6H).

Special requests:

- None.



Version Y303: black-oxide treated steel

Art.	D	d	H	m	c	d1 _{6H}	Q	
Y303020.VBM05	20	14	12	4	8	M5	7	17
Y303024.VBM06	24	16	14	4	10	M6	8	30
Y303030.VBM08	30	20	17	5	12	M8	10	50
Y303036.VBM10	36	28	20	6	14	M10	12	90
Y303040.VBM12	40	32	24	8	16	M12	16	124

Version Y303 PIN: stainless steel (Aisi 303)

INOX

Art.	D	d	H	m	c	d1 _{6H}	Q	
Y303020.INM05PIN	20	14	12	4	8	M5	7	17
Y303024.INM06PIN	24	16	14	4	10	M6	8	30
Y303030.INM08PIN	30	20	17	5	12	M8	10	50
Y303036.INM10PIN	36	28	20	6	14	M10	12	90
Y303040.INM12PIN	40	32	24	8	16	M12	16	124

Y653



AVP

Aisi
303



DIN 653 - FULL STEEL DIAMOND KNURLED THUMB SCREW WITH THREADED DOME-END STUD

Materials:

Y653:

Free-cutting steel.

Y653 CIN:

Stainless steel (Aisi 303).

Surface finish:

Smooth, turned.

Colour:

Y653:

Black-oxide treatment.

Y653 CIN:

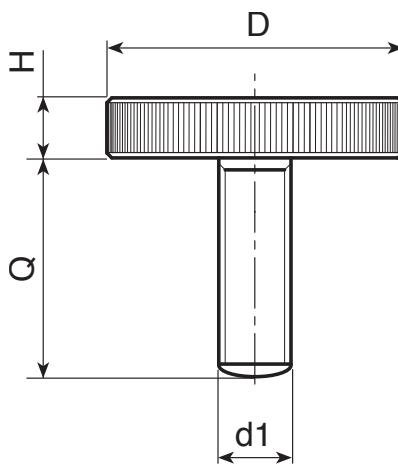
Natural.

Stud:

Threaded stud with dome end (thread tolerance 6g).

Special requests:

- None.



Version Y653: black-oxide treated steel

art.	D	H	d1 _{6g}	Q	g
Y653012.VBM03X..	12	2,5	M3	06-10-20	3-3-4
Y653016.VBM04X..	16	3,5	M4	10-16	6-7
Y653020.VBM05X..	20	4	M5	10-16-25	11-12-14
Y653024.VBM06X..	24	5	M6	12-16-25-30-35-40	20-21-23-24-25-26
Y653030.VBM08X..	30	6	M8	16-20-25-35-40	37-39-40-43-48
Y653036.VBM10X..	36	8	M10	20-30-40	72-76-80

Enter the selected grub screw length in place of the two dots . . in the item code.

Version Y653CIN - stainless steel (Aisi 303)

INOX

art.	D	H	d1 _{6g}	Q	g
Y653012.INM03X..CIN	12	2,5	M3	06-10-20	3-3-4
Y653016.INM04X..CIN	16	3,5	M4	10-16	6-7
Y653020.INM05X..CIN	20	4	M5	10-16-25	11-12-14
Y653024.INM06X..CIN	24	5	M6	12-16-25-30-35-40	20-21-23-24-25-26
Y653030.INM08X..CIN	30	6	M8	16-20-25-35-40	37-39-40-43-48
Y653036.INM10X..CIN	36	8	M10	20-30-40	72-76-80

Enter the selected grub screw length in place of the two dots . . in the item code.

Y336



DIN 6336 - E DESIGN - ALUMINIUM STAR HANDWHEEL

Materials:
Aluminium alloy.

Surface finish:
Smooth, turned.

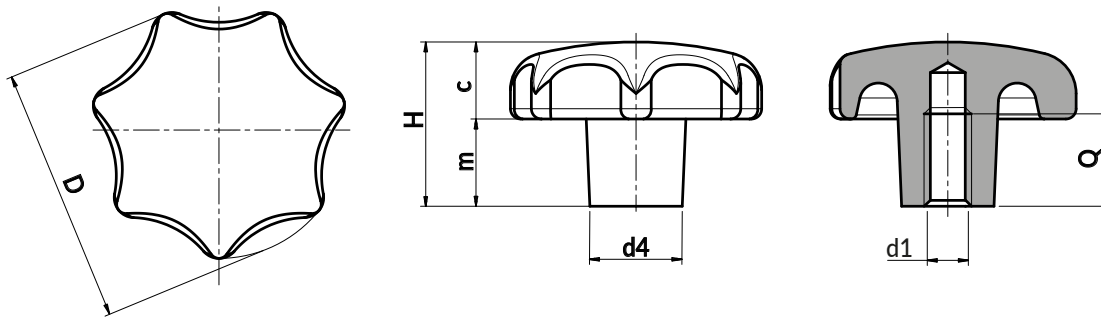
Y336:
Tumbled then electrolytically finished surface.

Y336L:
Mirror polished surface finish.

Colour:
Natural.

Hole:
Female threaded hole (thread tolerance 6H).

Special requests:
• None.



Version Y336: Tumbled surface finish

Art.	D	d	H	m	c	d1 _{6H}	Q	
Y336040.AM08	40	14	25	13	12	M8	15	35
Y336050.AM08	50	18	32	17	15	M8	18	55
Y336050.AM10	50	18	32	17	15	M10	18	54
Y336063.AM10	63	20	40	21	19	M10	22	110
Y336063.AM12	63	20	40	21	19	M12	22	107
Y336080.AM12	80	25	50	25	25	M12	28	320
Y336080.AM16	80	25	50	25	25	M16	28	300

Version Y336 L: Mirror polished surface finish

Art.	D	d	H	m	c	d1 _{6H}	Q	
Y336040.AM08L	40	14	25	13	12	M8	15	35
Y336050.AM08L	50	18	32	17	15	M8	18	55
Y336050.AM10L	50	18	32	17	15	M10	18	54
Y336063.AM10L	63	20	40	21	19	M10	22	110
Y336063.AM12L	63	20	40	21	19	M12	22	107
Y336080.AM12L	80	25	50	25	25	M12	28	320
Y336080.AM16L	80	25	50	25	25	M16	28	300

Y335



DIN 6335 - E DESIGN - ALUMINIUM CROSS HANDWHEEL

Materials:

Aluminium alloy.

Surface finish:

Smooth, turned.

Y335:

Tumbled then electrolytically finished surface.

Y335L:

Mirror polished surface finish.

Colour:

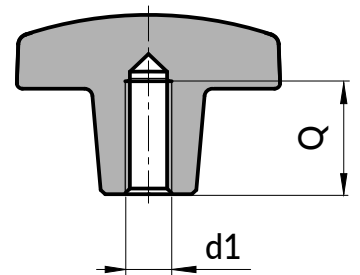
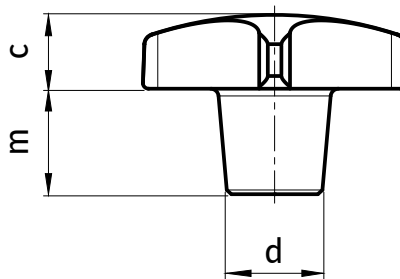
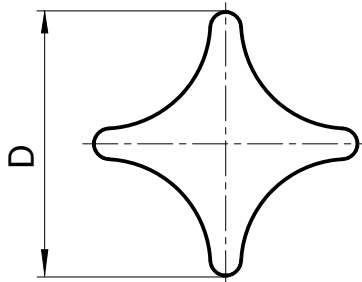
Natural.

Hole:

Female threaded hole (thread tolerance 6H).

Special requests:

- None.



Version Y335: Tumbled surface finish

Art.	D	d	H	m	c	d1 ^{6H}	Q	g
Y335040.AM08	40	14	25	14	11	M8	15	25
Y335050.AM10	50	18	32	20	12	M10	18	40
Y335063.AM12	63	20	40	25	15	M12	22	90
Y335080.AM16	80	25	50	30	20	M16	28	180

Version Y335 L: Mirror polished surface finish

Art.	D	d	H	m	c	d1 ^{6H}	Q	g
Y335040.AM08L	40	14	25	14	11	M8	15	25
Y335050.AM10L	50	18	32	20	12	M10	18	40
Y335063.AM12L	63	20	40	25	15	M12	22	90
Y335080.AM16L	80	25	50	30	20	M16	28	180
Y336063.AM12L	63	20	40	21	19	M12	22	107
Y336080.AM12L	80	25	50	25	25	M12	28	320



RESISTANT,
SUITABLE FOR
ANY USE.

