



Markes GmbH & Co. KG Metallwarenfabrik

An der Susannenhöhe 2
58553 Halver, Germany
Phone: + 49 (0) 2353 66985-0
Fax: +49 (0) 2353 66985-98
info@markes.de · www.markes.de



Load capacity:

The load capacity of the ball bearing is specified as load rating C in daN and tested under following conditions:

- 200mm roller length (short roller)
- axis fixed restrained
- rotational speed 100min⁻¹ - 200min⁻¹
- 1.000.000 revolutions (load change)

Service life:

From the load capacity the service life of the ball bearing could be calculated with following formula:

$$Lh = \frac{1000000}{60 \times n} \left(\frac{C}{P} \right)^p$$

Herein are:

- L_h: nominal service life [h]
- C: dynamic load rating [N]
- n: revolutions [min⁻¹]
- P: dynamic bearing load [N]
(P = C in case of radial load only)
- p: exponent of service life equation
(for ball bearing is considered p=3)

Plastics:

Polypropylen (PP)

- good mechanical characteristic
- excellent shock resistance

Polyacetal (POM)

- high hardness and stiffness
- low absorption of humidity
- good friction and abrasion characteristic

Polyamid (PA)

- tenacious/rigid
- very good mechanical characteristic and abrasion resistance

Antistatic Plastics

- PP
- POM

The use of antistatic plastics is only permissible in the provided temperature range. We can not give any guarantee for the conductivity.

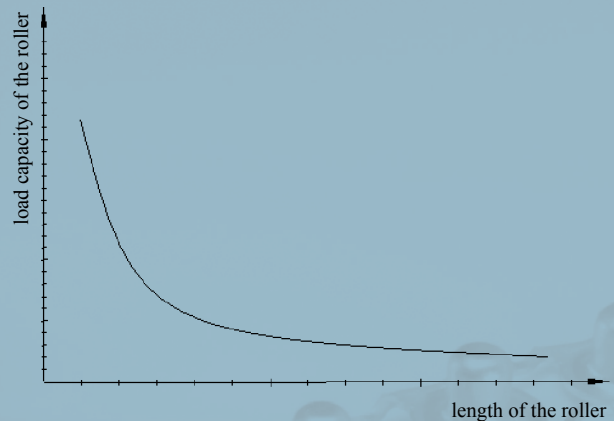
Attention: Do not use in explosion-proofed areas !!!

Affecting conditions:

Under different conditions the roller manufacturer has to determine the real new load capacity of the roller by himself. Kindly note that the service life and the load capacity of your roller will be determined by:










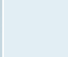
- roller length
- axis diameter
- style of the axis
- environment influences

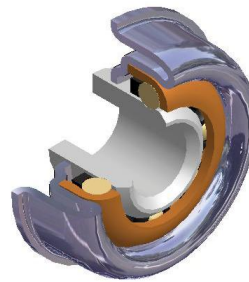
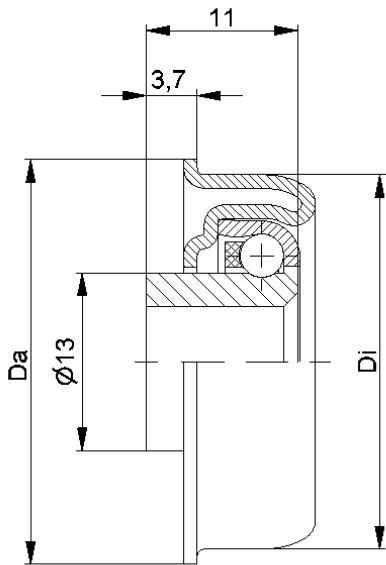
Influence of the roller length for the load rating:



Lubricants:

Our ball bearings are equipped with high quality lubricants. Furthermore our special greases and oils can reach a temperature range from -35°C to +180°C. Our tested lubricants are best proved for many years under every conditions. In a given case please ask for the optimal lubricants recommended by MARKES..

Metal roller bearings MTR up to 150 daN		1
Metal roller bearings MTS up to 250 daN		2
Plastic roller bearings KTR up to 10 daN		3
Plastic roller bearings KTR/KTE up to 150 daN		4
Skate Wheels KLR/SLR/SR		5
Retainer for standard bearings LH/KLH/FL/Attachment		6
Sprockets Sprocket wheels/Belt drive wheels		7
Components Sprocket wheels/Belt drive wheels/Taper Sleeves/Steel housings		8
Special bearings Radial ball bearings/Pressed thrust bearings/Cone ball bearings		9
Additional Products Ball Transfer Unit/Poly directional wheel/Brake roller unit/Metal Roller		10



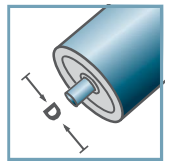
MTR-16			
Type	Di ±0.1	Da ±0.2	Load Rating C [daN]
MTR-30x1,2.16	27,6	29,6	30
MTR-30x1,5.16	27,3	29,6	30

Other dimensions on request!

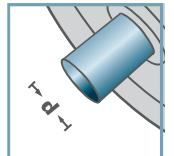
- ☛ Housing: Steel, Zinc plated
- ☛ Bearing RL-16
 - ☛ Bearing Shell: Steel, Hardened
 - ☛ Inner Race: Steel, Hardened, Zinc plated
 - ☛ Ball Cage: Plastic
 - ☛ Ball: Steel



MTR-16



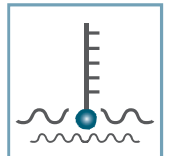
D [mm]
30



d [mm]
6; 8; 10



C [daN]
30



T [°C]
-50° - 100°



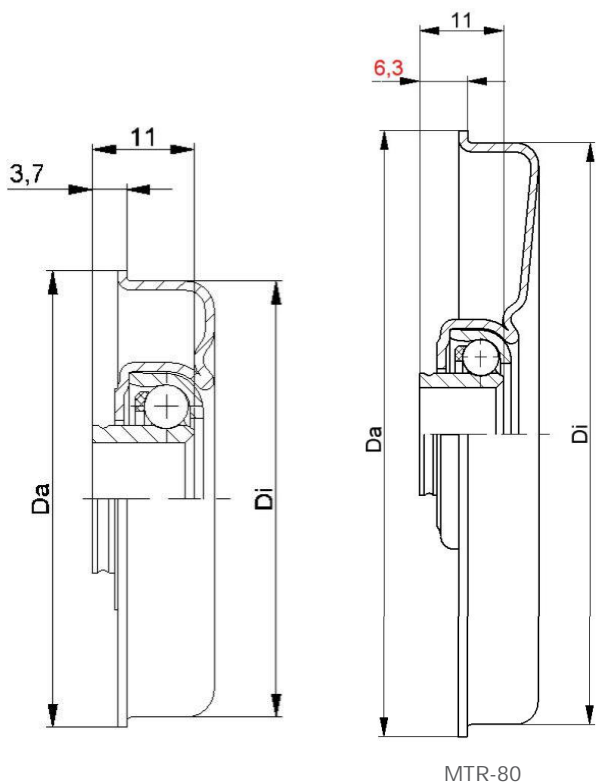
Oil



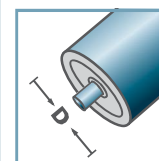
Carton [pcs.]

50/500

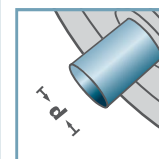
MTR



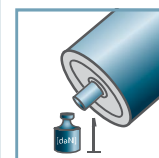
MTR-20



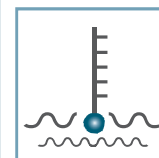
D [mm]
40 - 80



d [mm]
8; 10; 12; SW11



C [daN]
80



T [°C]
-50° - 100°



Oil



Carton [pcs.]

ø40: 250
ø48: 100/350
ø50: 100/350
ø60: 200
ø80: 100

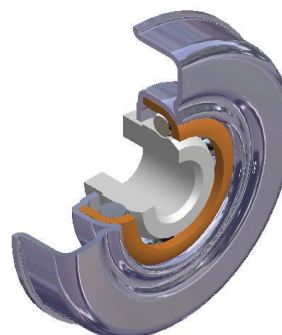
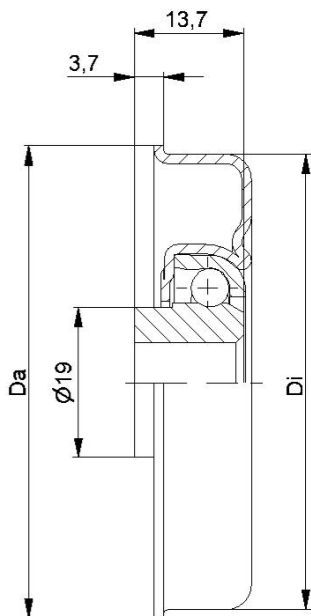
MTR-20			
Type	Di ±0.1	Da ±0.2	Load Rating C [daN]
MTR-40x1,5.20	37,3	39,5	80
MTR-40x2,0.20	36,3	39,5	80
MTR-48x1,5.20	45,3	47,5	80
MTR-50x1,5.20	47,3	49,5	80
MTR-50x2,0.20	46,3	49,5	80
MTR-60x1,5.20	57,3	59,5	80
MTR-60x2,0.20	56,3	59,5	80
MTR-80x2,0.20	76,4	79,5	80

Other dimensions on request!

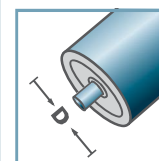
- ☛ Housing: Steel, Zinc plated
- ☛ Bearing RL-20
 - ☛ Bearing Shell: Steel, Hardened
 - ☛ Inner Race: Steel, Hardened, Zinc plated
 - ☛ Ball Cage: Plastic
 - ☛ Ball: Steel



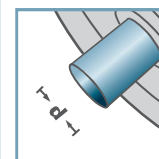
MTR



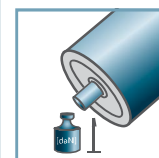
MTR-30-2



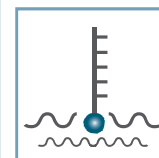
D [mm]
50 - 80



d [mm]
10;12; 14; 15;
SW11



C [daN]
120



T [°C]
0° - 100°



EP 0



Carton [pcs.]

ø50: 300
ø60: 200
ø80: 100

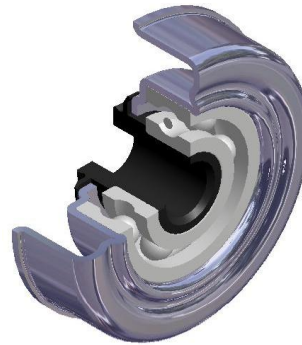
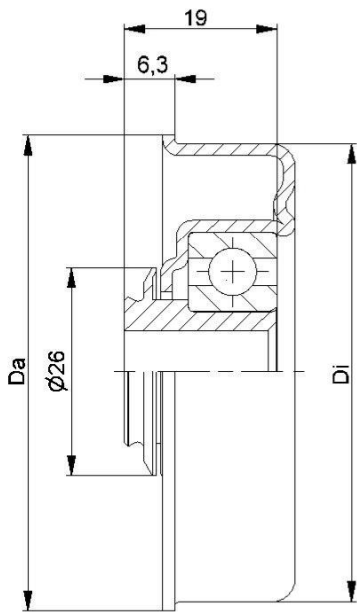
MTR-30-2			
Type	Di ±0.1	Da ±0.2	Load Rating C [daN]
MTR-50x1,5.30-2	47,3	49,5	120
MTR-50x2,0.30-2	46,3	49,5	120
MTR-60x1,5.30-2	57,3	59,5	120
MTR-60x2,0.30-2	56,3	59,5	120
MTR-80x2,0.30-2	76,4	79,5	120

Other dimensions on request!

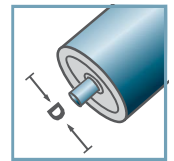
- ☛ Housing: Steel, Zinc plated
- ☛ Bearing RL-30-2
 - ☛ Bearing Shell: Steel, Hardened
 - ☛ Inner Race: Steel, Hardened
 - ☛ Ball: Steel



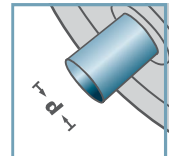
MTR



MTR-40



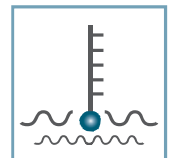
D [mm]
50 - 80



d [mm]
10; 12; SW11



C [daN]
120 - 150



T [°C]
0° - 80°



EP 2



Carton [pcs.]

ø50: 100
ø60: 150
ø80: 100

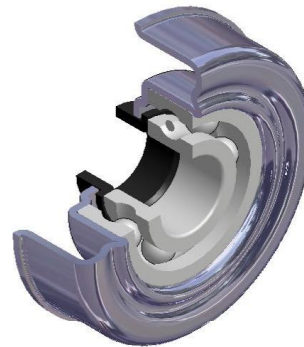
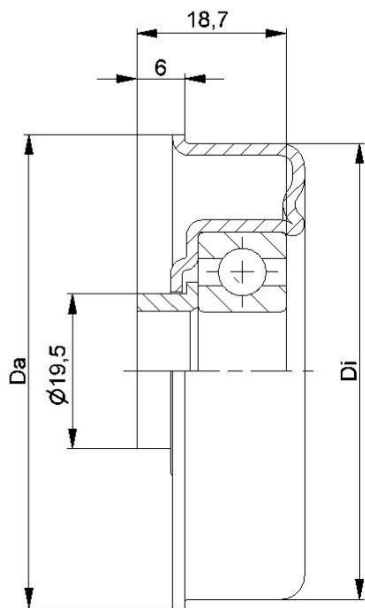
MTR-40			
Type	Di ±0.1	Da ±0.2	Load Rating C [daN]
MTR-50x1,5.40	47,3	49,5	120
MTR-50x2,0.40	46,3	49,5	120
MTR-60x1,5.40	57,3	59,5	150
MTR-60x2,0.40	56,3	59,5	150
MTR-60x3,0.40	54,3	59,5	150
MTR-80x2,0.40	76,5	79,5	150

Other dimensions on request!

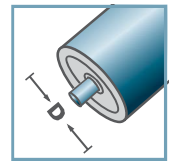
- ☛ Housing: Steel, Zinc plated
- ☛ Reducing Bush: Plastic
- ☛ Bearing 6202



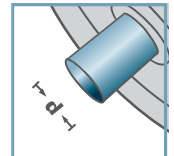
MTR



MTR-40.15



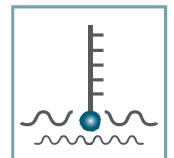
D [mm]
50 - 80



d [mm]
15



C [daN]
120 - 150



T [°C]
0° - 80°



EP 2



Carton [pcs.]

ø50: 100
ø60: 150
ø80: 100

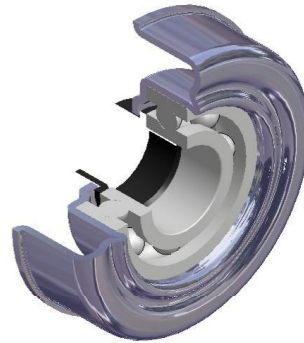
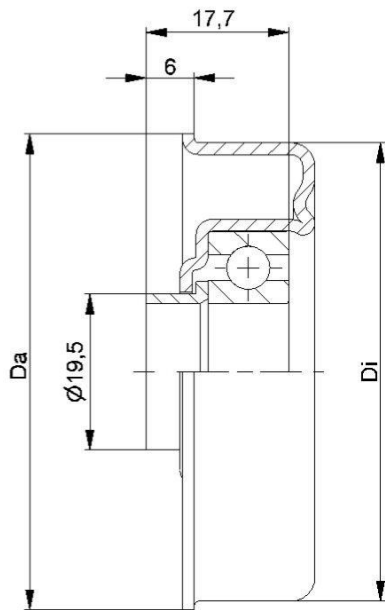
MTR-40.15			
Type	Di ±0.1	Da ±0.2	Load Rating C [daN]
MTR-50x1,5.40.15	47,3	49,5	120
MTR-50x2,0.40.15	46,3	49,5	120
MTR-60x1,5.40.15	57,3	59,5	150
MTR-60x2,0.40.15	56,3	59,5	150
MTR-60x3,0.40.15	54,3	59,5	150
MTR-80x2,0.40.15	76,5	79,5	150

Other dimensions on request!

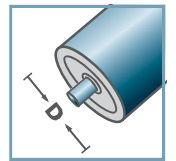
- ☛ Housing: Steel, Zinc plated
- ☛ Distance Bush: Plastic
- ☛ Bearing 6202



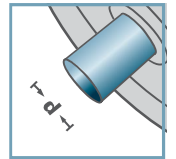
MTR



MTR-45.17



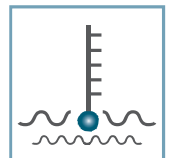
D [mm]
50, 80



d [mm]
17



C [daN]
120 - 150



T [°C]
0° - 80°



EP 2



Carton [pcs.]

ø50: 100
ø60: 150
ø80: 100

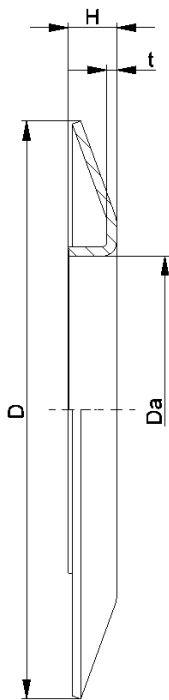
MTR-45.17			
Type	Di ±0.1	Da ±0.2	Load Rating C [daN]
MTR-50x1,5.45.17	47,3	49,5	120
MTR-60x2,0.45.17	56,3	59,5	150
MTR-60x3,0.45.17	54,3	59,5	150
MTR-80x2,0.45.17	76,5	79,5	150

Other dimensions on request!

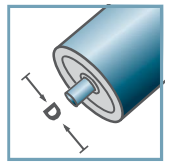
- Housing: Steel, Zinc plated
- Distance Bush: Plastic
- Bearing 6003



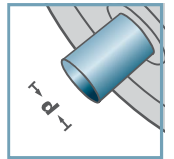
MTR



BS-



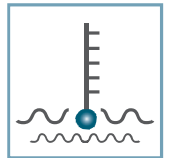
D [mm]
50 - 108



d [mm]
-



C [daN]
-



T [°C]
-



-



Carton [pcs.]



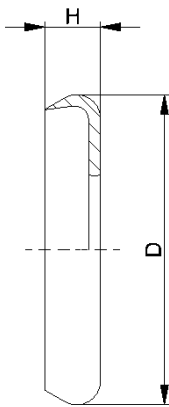
BS-				
Type	Da ±0.1	D -2	H ±0.5	t
BS-50-130	49,9	130	10	1,5
BS-60-130	59,9	130	10	1,5
BS-80-150	79,9	150	14	2,5
BS-89-150	88,9	150	14	2,5
BS-108-150	107,9	150	14	2,5

Other dimensions on request!

• Wheel Flange: Steel



MTR



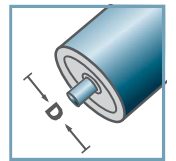
DK-MTR		
Type	D	H
DK-MTR-20	34	7
DK-MTR-30-2	39	7

Other dimensions on request!

Seal Bonnet: Plastic

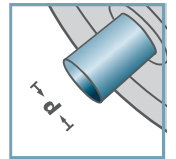


DK-MTR-



D [mm]

-



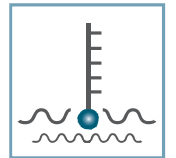
d [mm]

-



C [daN]

-



T [°C]

0° - 80°



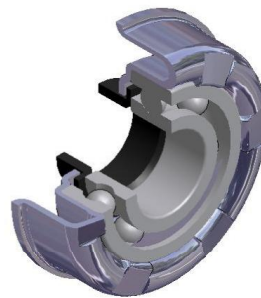
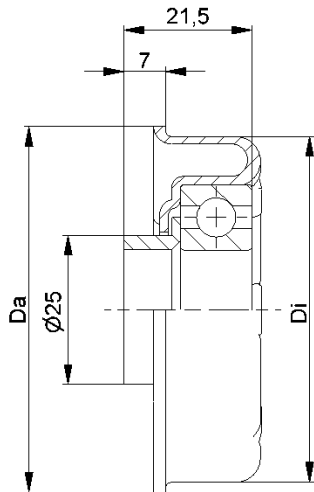
-



Carton [pcs.]

/

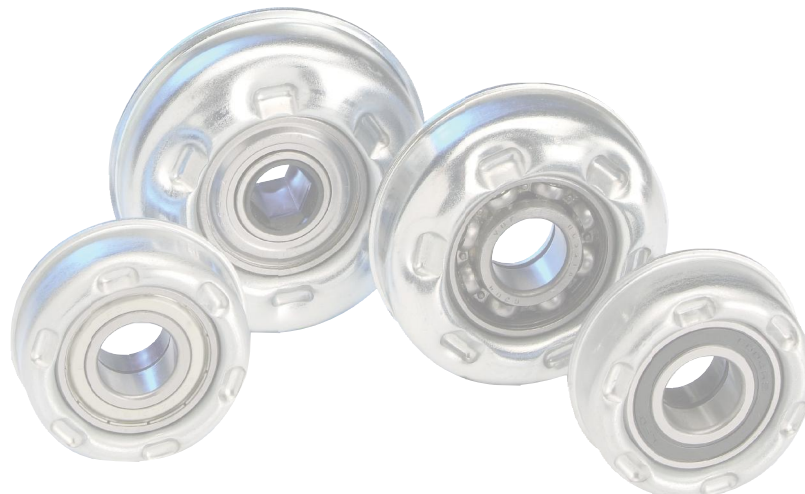
MTR



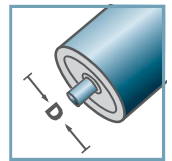
MTS-46			
Type	Di ±0.1	Da ±0.2	Load Rating C [daN]
MTS-63,5x2,9.46	58,1	61,5	200

Other dimensions on request!

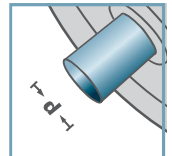
- Housing: Steel, Zinc plated
- Distance Bush: Plastic
- Bearing 6004



MTS-46



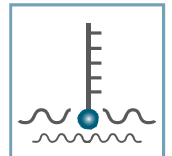
D [mm]
63,5



d [mm]
20



C [daN]
200



T [°C]
0° - 100°



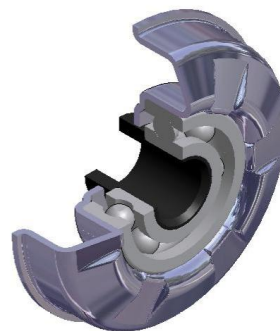
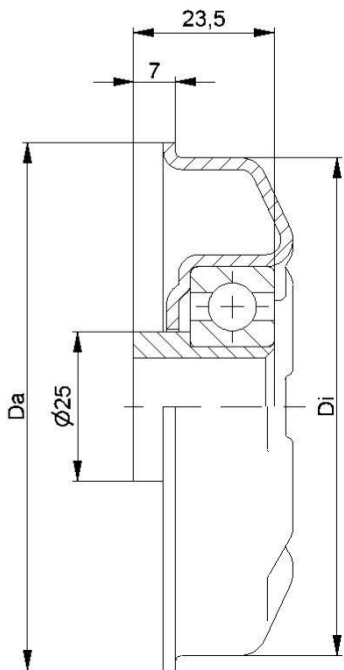
EP 2



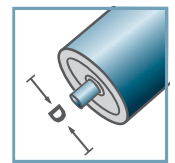
Carton [pcs.]

50/100

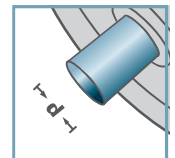
MTS



MTS-44



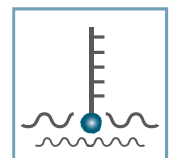
D [mm]
80 - 108



d [mm]
16; 17; SW14



C [daN]
250



T [°C]
0° - 100°



EP 2



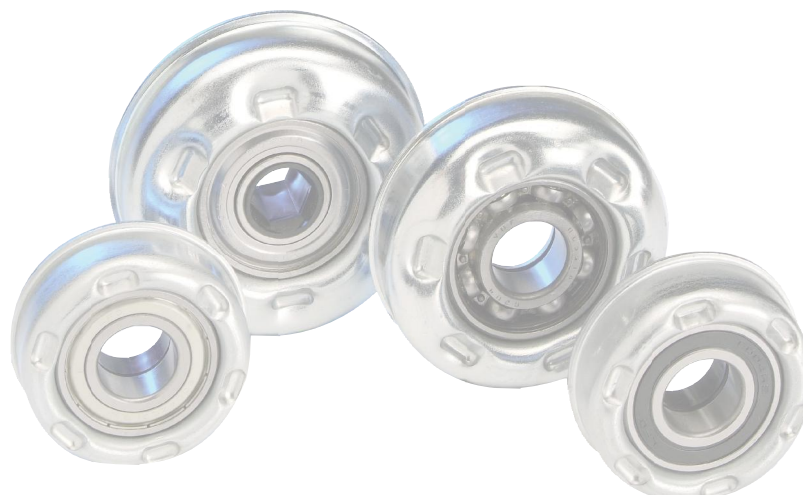
Carton [pcs.]

50

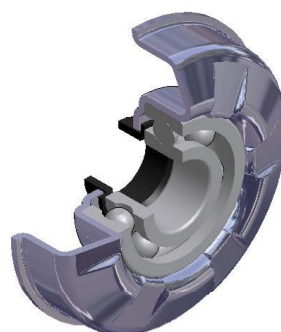
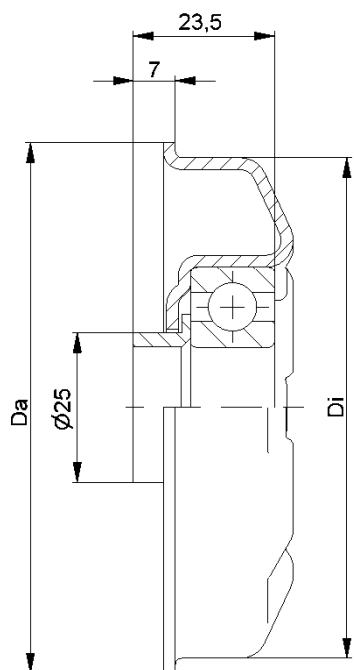
MTS-44			
Type	Di ±0.1	Da ±0.2	Load Rating C [daN]
MTS-80x2,0.44	76,5	79,5	250
MTS-80x3,0.44	74,5	79,5	250
MTS-89x3,0.44	83,5	88,5	250
MTS-89x3,25.44	83,0	88,5	250
MTS-108x3,25.44	102,0	107,5	250

Other dimensions on request!

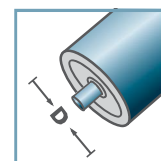
- ☛ Housing: Steel, Zinc plated
- ☛ Reducing Bush: Plastic
- ☛ Bearing 6204



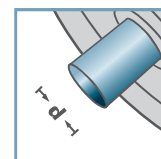
MTS



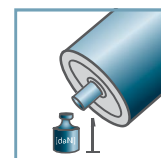
MTS-44



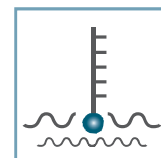
D [mm]
80 - 108



d [mm]
20



C [daN]
250



T [°C]
0° - 100°



EP 2



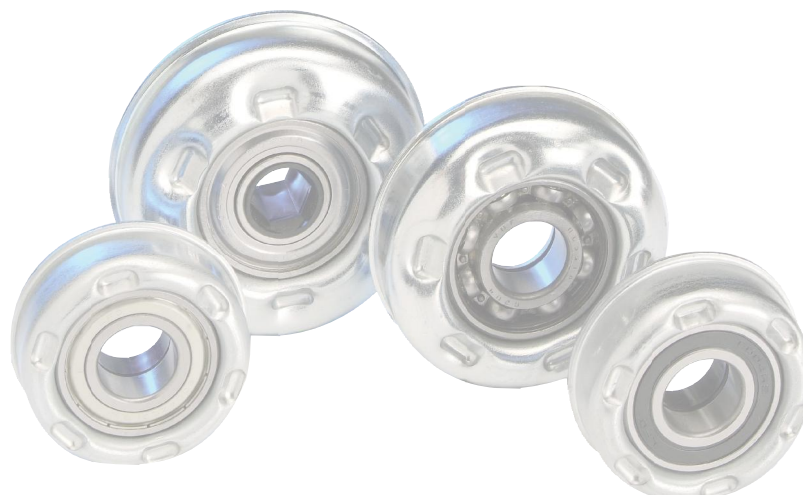
Carton [pcs.]

50

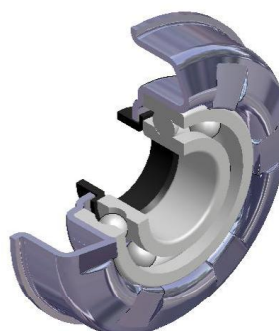
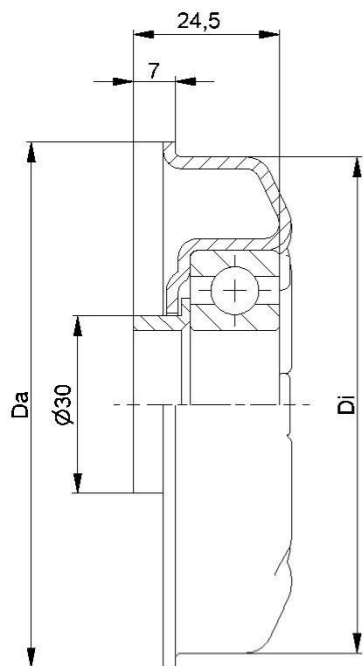
MTS-44			
Type	Di ±0.1	Da ±0.2	Load Rating C [daN]
MTS-80x2,0.44	76,5	79,5	250
MTS-80x3,0.44	74,5	79,5	250
MTS-89x3,0.44	83,5	88,5	250
MTS-89x3,25.44	83,0	88,5	250
MTS-108x3,25.44	102,0	107,5	250

Other dimensions on request!

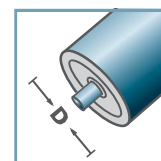
- Housing: Steel, Zinc plated
- Distance Bush: Plastic
- Bearing 6204



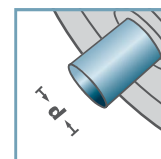
MTS



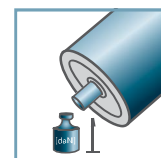
MTS-47



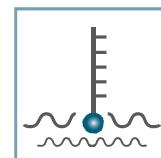
D [mm]
89 - 108



d [mm]
25



C [daN]
250



T [°C]
0° - 100°



EP 2



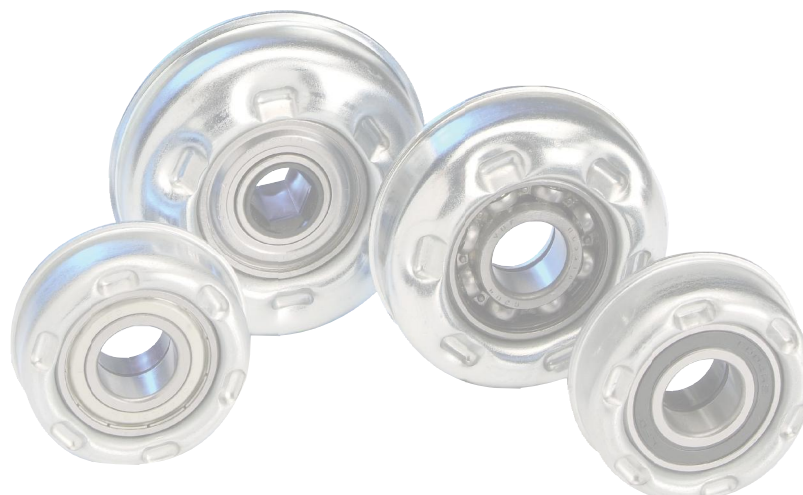
Carton [pcs.]

50

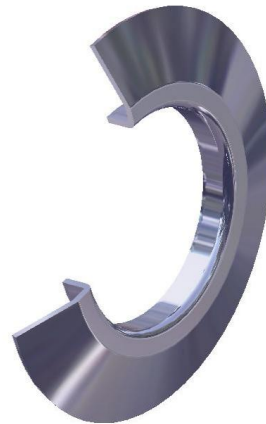
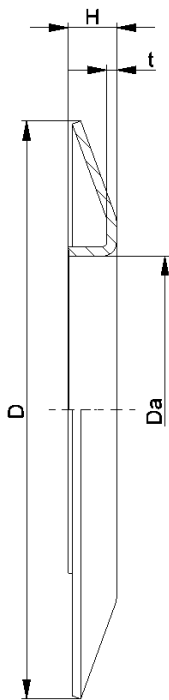
MTS-47			
Type	Di ±0.1	Da ±0.2	Load Rating C [daN]
MTS-89x3,0.47	83,5	88,5	250
MTS-108x3,25.47	102,0	107,5	250

Other dimensions on request!

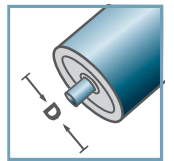
- ☛ Housing: Steel, Zinc plated
- ☛ Distance Bush: Plastic
- ☛ Bearing 6205



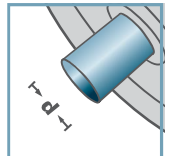
MTS



BS-



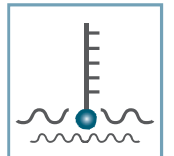
D [mm]
50 - 108



d [mm]
-



C [daN]
-



T [°C]
-



-



Carton [pcs.]



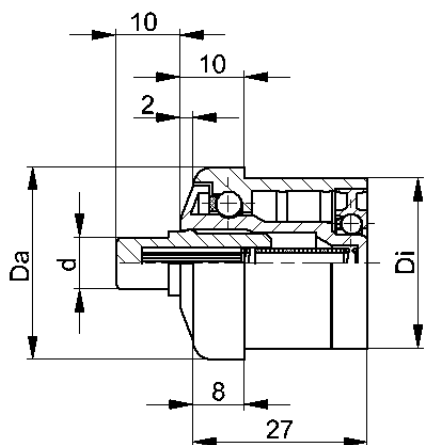
BS-				
Type	Da ±0.1	D -2	H ±0.5	t
BS-50-130	49,9	130	10	1,5
BS-60-130	59,9	130	10	1,5
BS-80-150	79,9	150	14	2,5
BS-89-150	88,9	150	14	2,5
BS-108-150	107,9	150	14	2,5

Other dimensions on request!

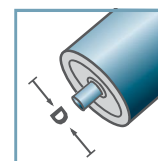
• Wheel Flange: Steel



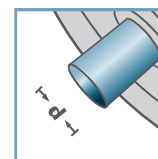
MTS



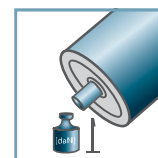
KTR-.00 FA
KTR-.01 FA



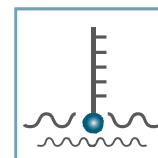
D [mm]
20, 30, 40, 50



d [mm]
6; 8; 10



C [daN]
8 - 15



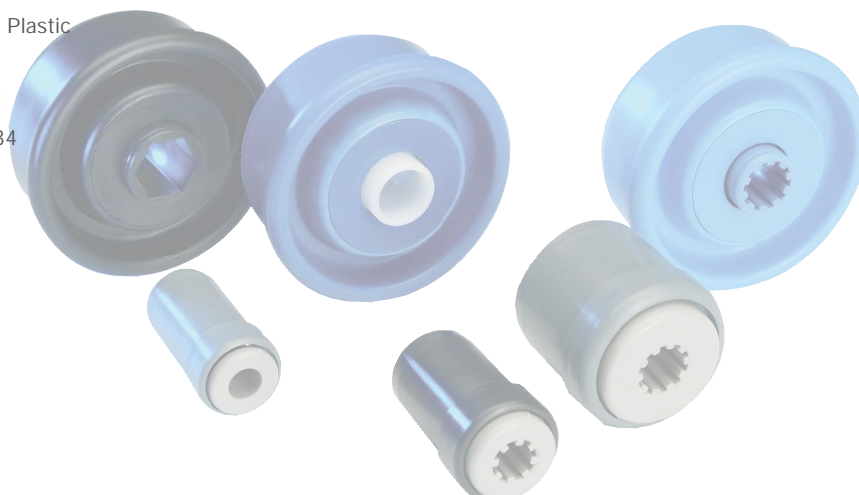
T [°C]
0° - 80°



KTR-.00/.01 FA						
Type	Normal .00	Stainless .01	Di +0,25	Da	d	Load Rating C [daN]
KTR-20x1,5	x	x	17,1	19,9	6	8
KTR-30x1,8	x	x	26,5	29,9	8	10
KTR-40x2,3	x	x	35,5	39,9	8	10
KTR-50x2,8	x	x	44,6	49,9	10	15

Other dimensions on request!

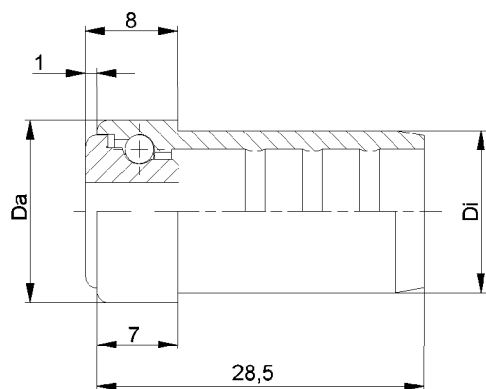
- ☛ Housing: Plastic
- ☛ Inner Race: Plastic
- ☛ Ball Cage: Plastic
- ☛ Shaft: Plastic
- ☛ Bearing Flange: Plastic
- ☛ Ball, Spring
 - ☛ 00: Steel
 - ☛ 01: 1.4034



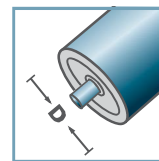
Carton [pcs.]

ø20: 500/1000
ø30: 250/500
ø40: 250/500
ø50: 250

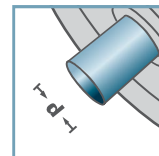
KTR



KTR-16.00
KTR-16.01



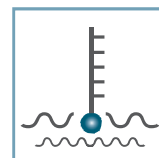
D [mm]
16



d [mm]
5; 6



C [daN]
3



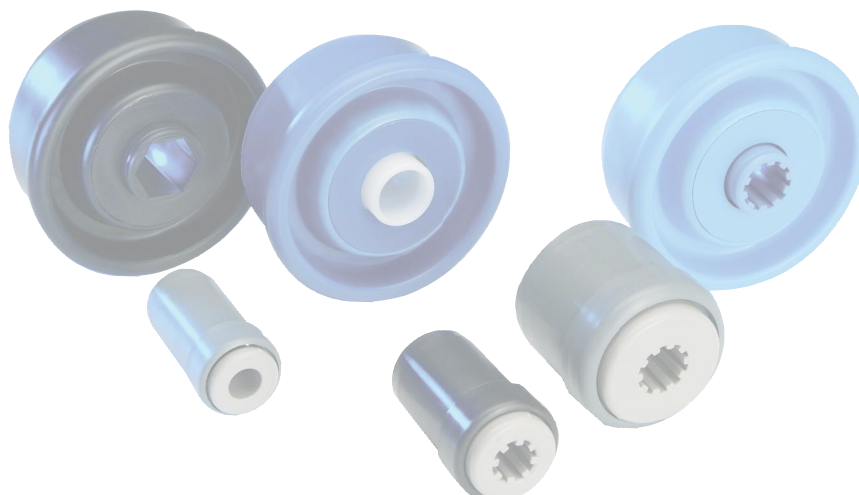
T [°C]
0° - 80°



KTR-16.00/.01					
Type	Normal .00	Stainless .01	Di +0,15	Da	Load Rating C [daN]
KTR-16x1,0	x	x	14,1	15,9	3

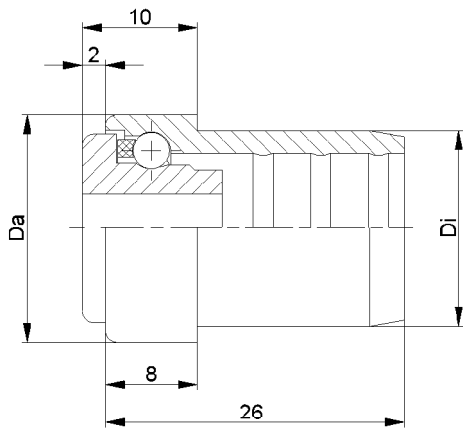
Other dimensions on request!

- ☛ Housing: Plastic
- ☛ Inner Race: Plastic
- ☛ Ball
 - ☛ 00: Steel
 - ☛ 01: 1.4034

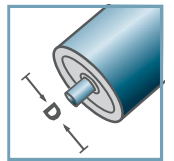


Carton [pcs.]

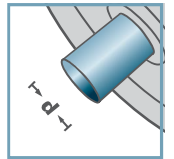
500/2500



KTR-20.00
KTR-20.01



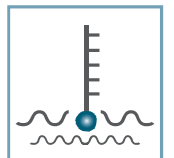
D [mm]
20



d [mm]
6; 8



C [daN]
5



T [°C]
0° - 80°

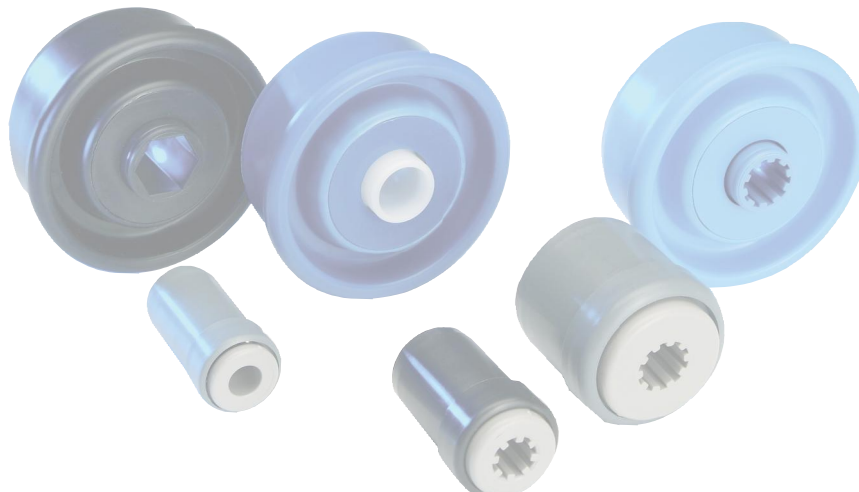


KTR-20.00/.01

Type	Normal .00	Stainless .01	Di +0,15	Da	Load Rating C [daN]
KTR-20x1,0	x	x	18,1	19,9	5
KTR-20x1,5	x	x	17,1	19,9	5

Other dimensions on request!

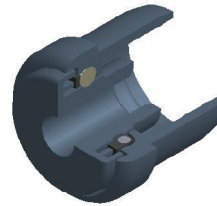
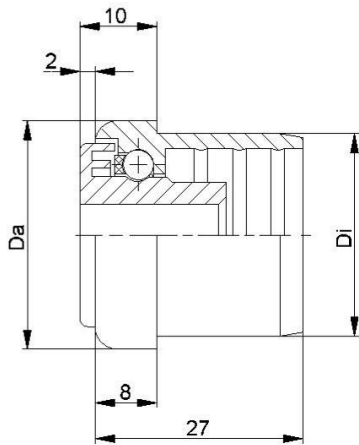
- ☛ Housing: Plastic
- ☛ Inner Race: Plastic
- ☛ Ball Cage: Plastic
- ☛ Ball
 - ☛ 00: Steel
 - ☛ 01: 1.4034



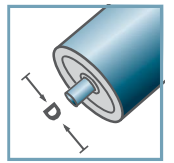
Carton [pcs.]

500/1000

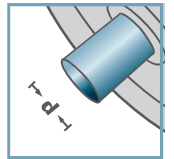
KTR



KTR-30.00
KTR-30.01



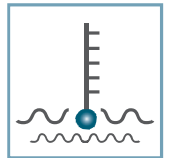
D [mm]
30



d [mm]
6; 8; 10



C [daN]
7



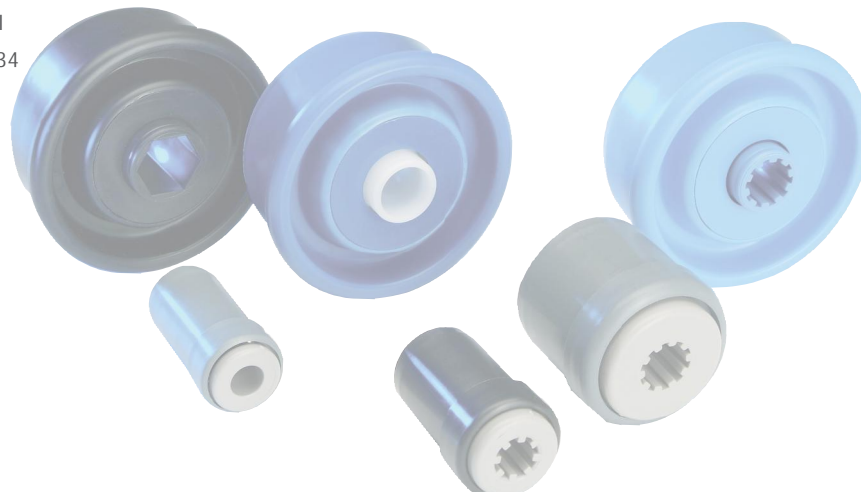
T [°C]
0° - 80°



KTR-30.00/.01					
Type	Normal .00	Stainless .01	Di +0,25	Da	Load Rating C [daN]
KTR-30x1,0	x	x	28,1	29,9	7
KTR-30x1,5	x	x	27,1	29,9	7
KTR-30x1,8	x	x	26,5	29,9	7
KTR-30x2,0	x	x	26,35	29,9	7

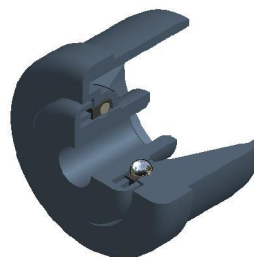
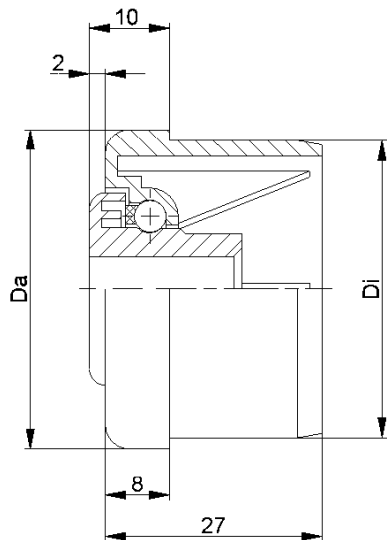
Other dimensions on request!

- ☛ Housing: Plastic
- ☛ Inner Race: Plastic
- ☛ Ball Cage: Plastic
- ☛ Ball
 - ☛ 00: Steel
 - ☛ 01: 1.4034

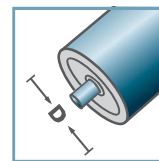


Carton [pcs.]
50/250/500

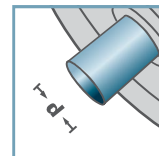
KTR



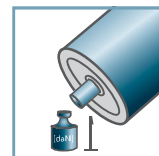
KTR-40.00
KTR-40.01



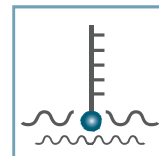
D [mm]
40



d [mm]
6; 8; 10



C [daN]
7



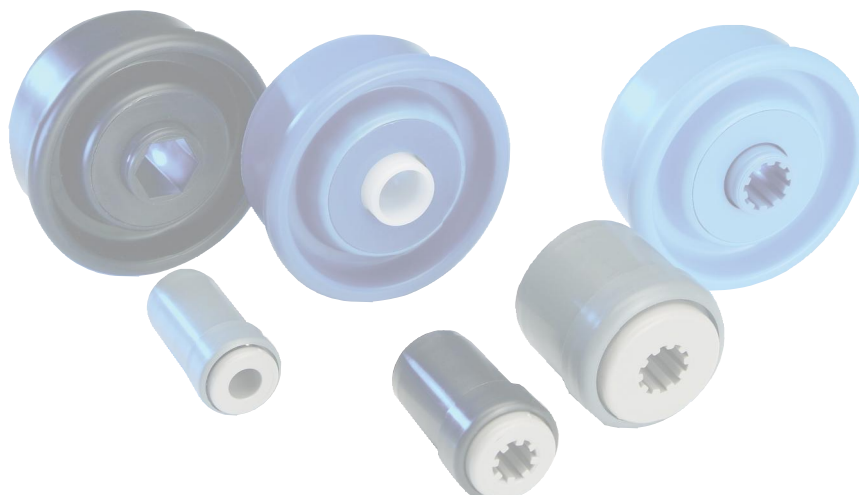
T [°C]
0° - 80°



KTR-40.00/.01					
Type	Normal .00	Stainless .01	Di +0,25	Da	Load Rating C [daN]
KTR-40x1,5	x	x	37,1	39,9	7
KTR-40x2,3	x	x	35,5	39,9	7

Other dimensions on request!

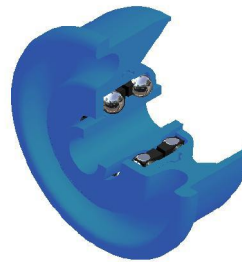
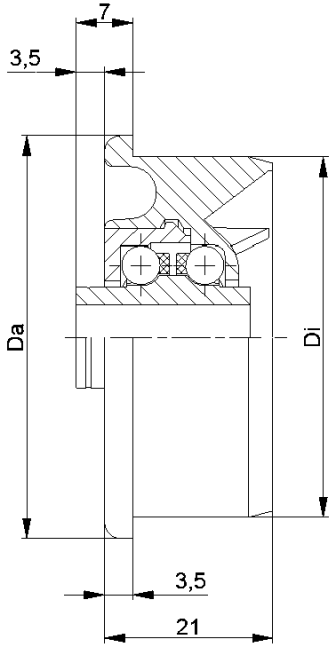
- ☛ Housing: Plastic
- ☛ Inner Race: Plastic
- ☛ Ball Cage: Plastic
- ☛ Ball
 - ☛ 00: Steel
 - ☛ 01: 1.4034



Carton [pcs.]

50/250

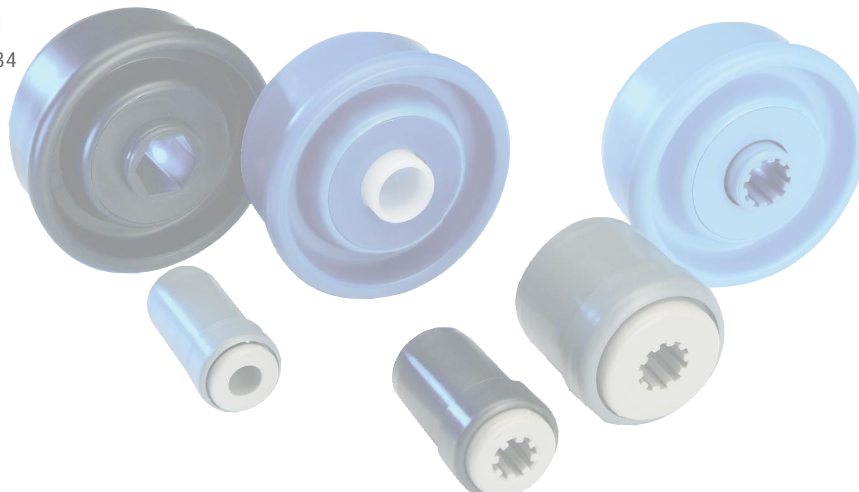
KTR



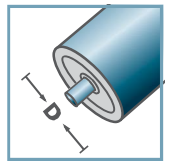
KTR-02/03					
Type	Normal .02	Stainless .03	Di +0,2	Da	Load Rating C [daN]
KTR-50x1,5	x	x	47,3	49,9	15
KTR-50x2,0	x	x	46,3	49,9	15
KTR-50x2,8	x	x	44,6	49,9	15

Other dimensions on request!

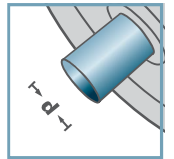
- ☛ Housing: Plastic
- ☛ Inner Race: Plastic
- ☛ Bearing Cap: Plastic
- ☛ Ball Cage: Plastic
- ☛ Ball
 - ☛ 02: Steel
 - ☛ 03: 1.4034



KTR-02
KTR-03



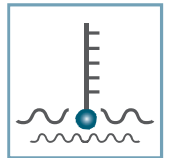
D [mm]
50



d [mm]
8; 10



C [daN]
15



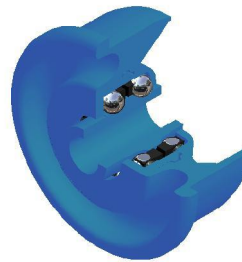
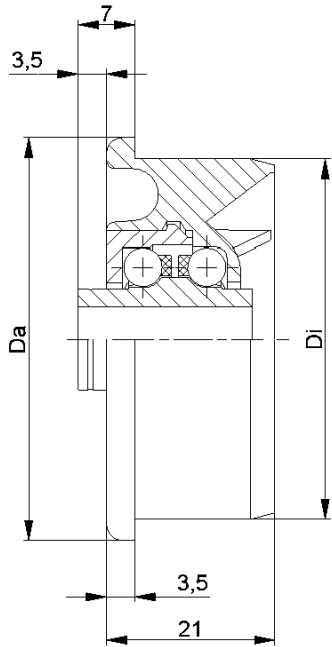
T [°C]
0° - 80°



Carton [pcs.]

50x1,5: 250
50x2,0: 250
50x2,8: 250

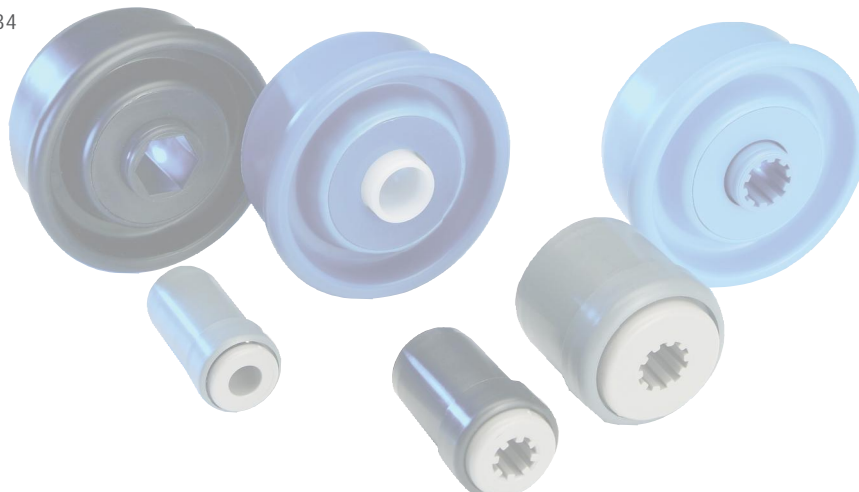
KTR



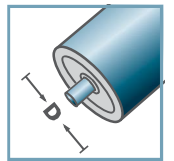
KTR-02/03					
Type	Normal .02	Stainless .03	Di +0,2	Da	Load Rating C [daN]
KTR-50x1,5	x	x	47,3	49,9	10
KTR-50x2,8	x	x	44,6	49,9	10

Other dimensions on request!

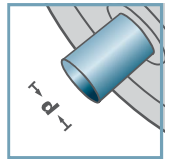
- ☛ Housing: Plastic
- ☛ Inner Race: Plastic
- ☛ Bearing Cap: Plastic
- ☛ Ball Cage: Plastic
- ☛ Ball
- ☛ 02: Steel
- ☛ 03: 1.4034



KTR-02
KTR-03



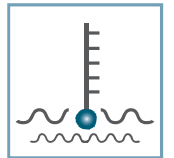
D [mm]
50



d [mm]
12; SW11



C [daN]
10

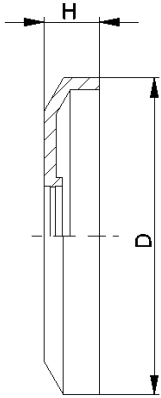


T [°C]
0° - 80°



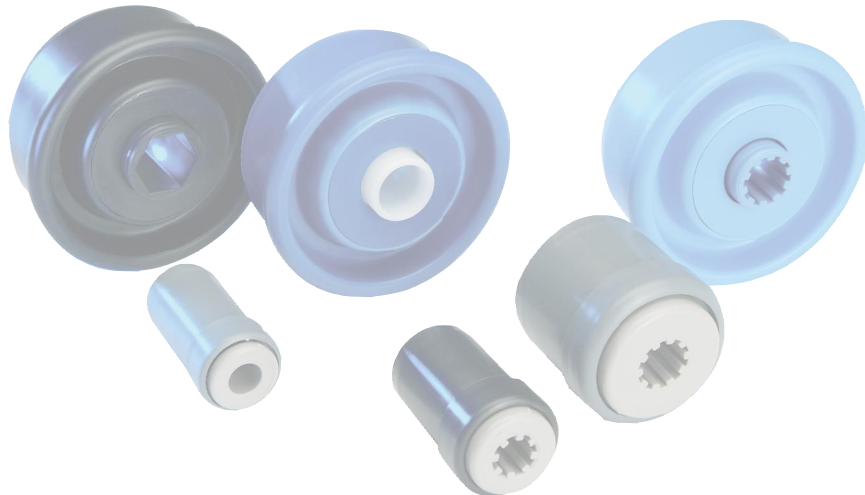
Carton [pcs.]

250

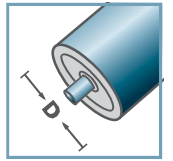


DK-KTR		
Type	D	H
DK-KTR-02	40,5	7
Other dimensions on request!		

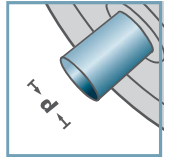
Seal Bonnet: Plastic



DK-KTR-02



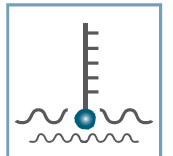
D [mm]
-



d [mm]
-



C [daN]
-



T [°C]
0° - 80°

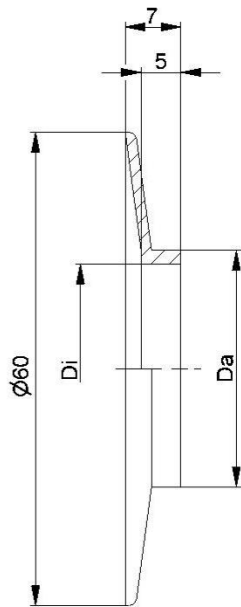


-



Carton [pcs.]

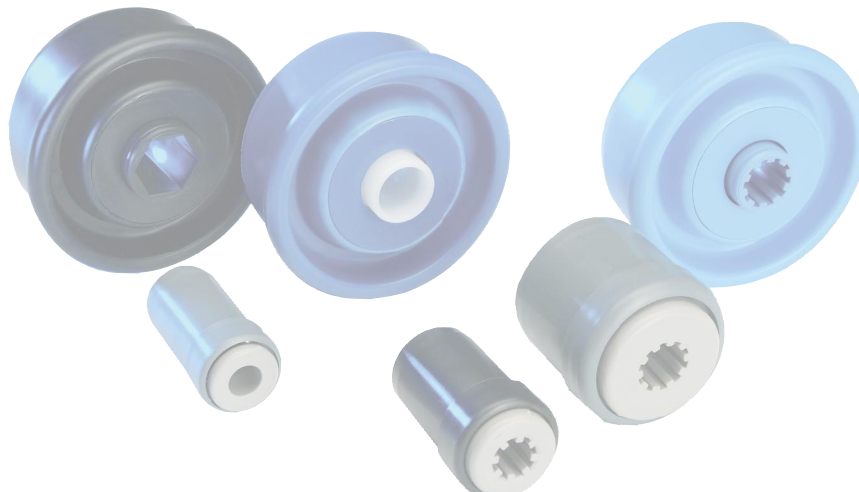




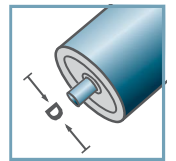
BS-		
Type	D_i	D_a
BS-30x1,8	26,5	29,9
BS-40x1,5	37,1	39,9
BS-40x2,3	35,5	39,9

Other dimensions on request!

☛ Wheel Flange: Plastic

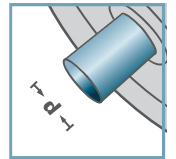


BS-



D [mm]

-



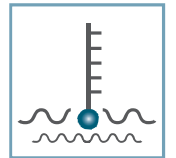
d [mm]

-



C [daN]

-



T [°C]

0° - 80°

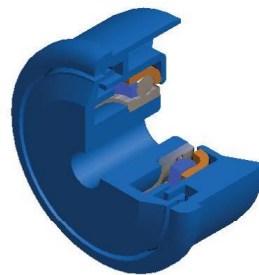
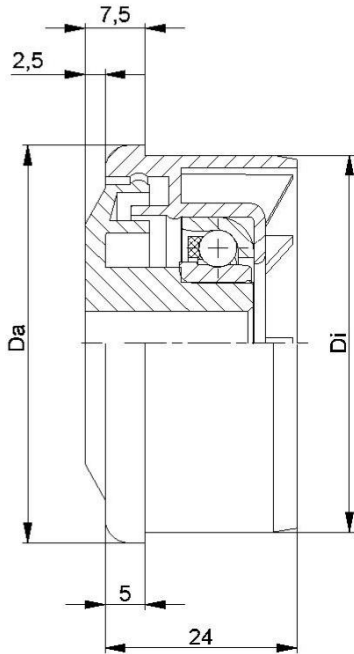


-



Carton [pcs.]



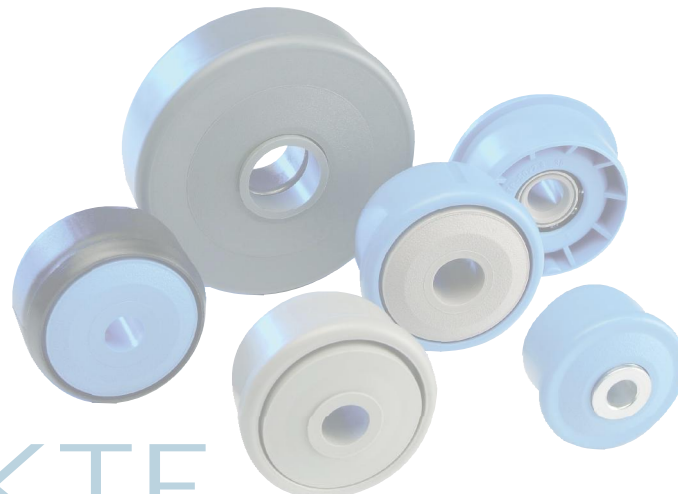


KTR-30			
Type	Di +0,2	Da	Load Rating C [daN]
KTR-50x1,5.30	47,3	49,9	80
KTR-50x2,8.30	44,6	49,9	80
KTR-60x1,5.30	57,3	59,9	80

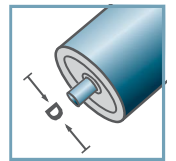
Other dimensions on request!

- ☛ Housing: Plastic
- ☛ Single Labyrinth Seal: Plastic
- ☛ Bearing RL-30
 - ☛ Bearing Shell: Steel, Hardened
 - ☛ Inner Race: Steel, Hardened
 - ☛ Ball Cage: Plastic
 - ☛ Ball: Steel

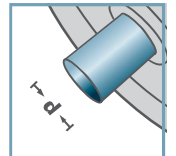
Please note: the single labyrinth seal for axis 15 mm is delivered separately and has to be locked at assembly.



KTR-30



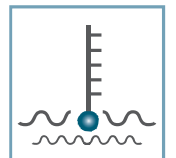
D [mm]
50 - 60



d [mm]
10; 12; 15; SW11



C [daN]
80



T [°C]
0° - 80°



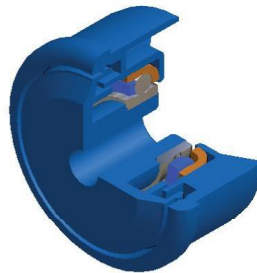
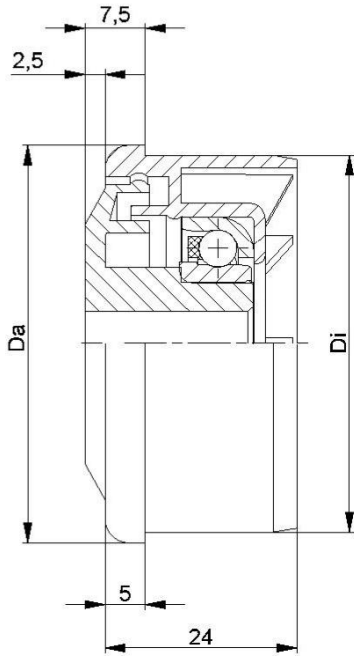
Oil



Carton [pcs.]

ø50: 250
ø60: 200

KTR/KTE

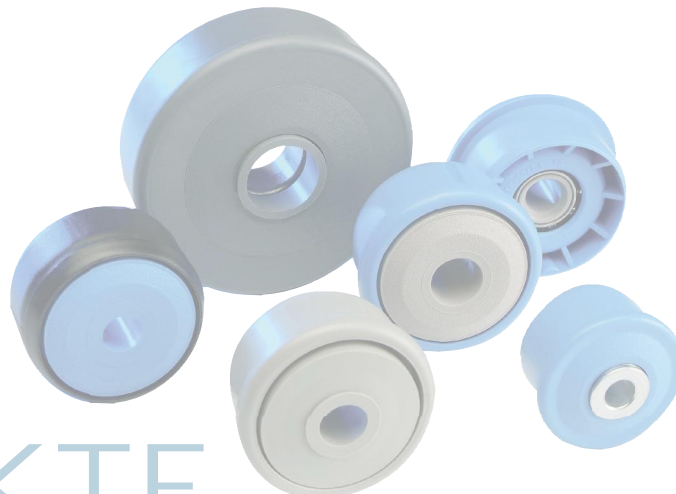


KTR-31			
Type	Di +0,2	Da	Load Rating C [daN]
KTR-50x1,5.31	47,3	49,9	25
KTR-50x2,8.31	44,6	49,9	25
KTR-60x1,5.31	57,3	59,9	25

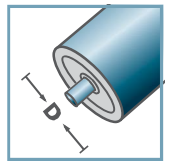
Other dimensions on request!

- ☛ Housing: Plastic
- ☛ Single Labyrinth Seal: Plastic
- ☛ Bearing RL-31
 - ☛ Bearing Shell: 1.4301
 - ☛ Inner Race: 1.4305
 - ☛ Ball Cage: Plastic
 - ☛ Ball: 1.4301

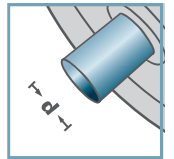
Please note: the single labyrinth seal for axis 15 mm is delivered separately and has to be locked at assembly.



KTR-31



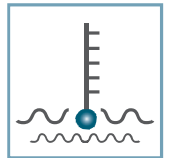
D [mm]
50 - 60



d [mm]
10; 12; 15; SW11



C [daN]
25



T [°C]
0° - 80°

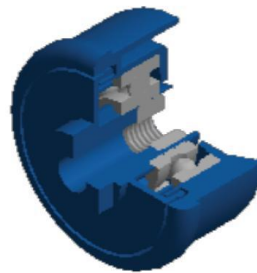
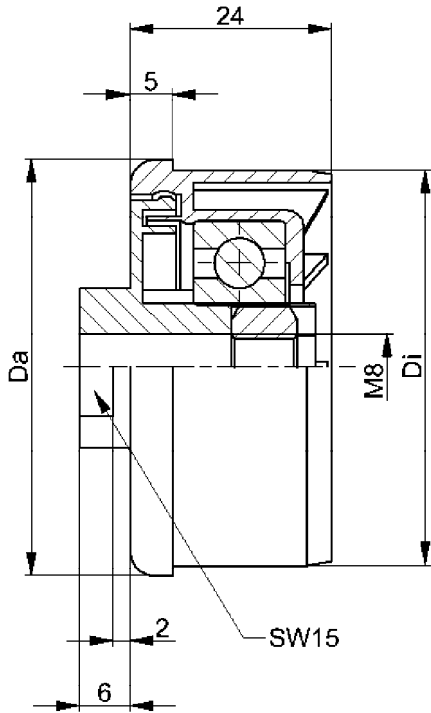


Oil



Carton [pcs.]
ø50: 250
ø60: 200

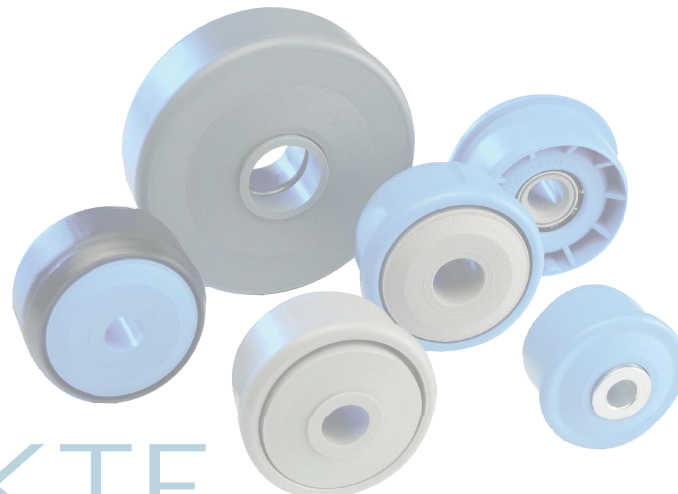
KTR/KTE



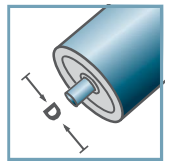
KTR-40.M8			
Type	Di +0,2	Da	Load Rating C [daN]
KTR-50x1,5.40	47,3	49,9	80

Other dimensions on request!

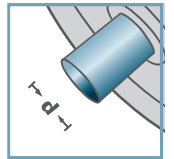
- Housing: Plastic
- Single Labyrinth Seal: Plastic
- Bearing 6202
- Hexagon Nut



KTR-40.M8



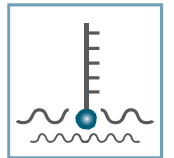
D [mm]
50



d [mm]
M8



C [daN]
80



T [°C]
0° - 80°



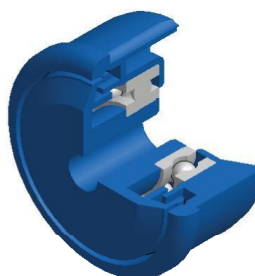
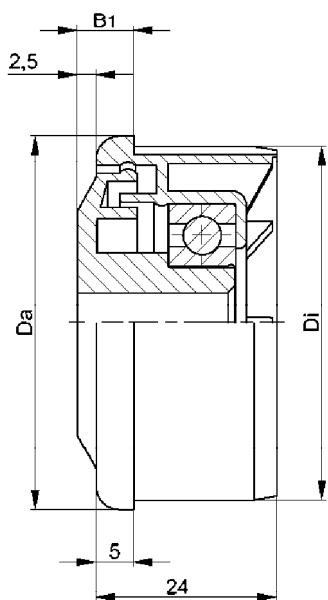
EP 2



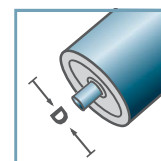
Carton [pcs.]

ø50: 250

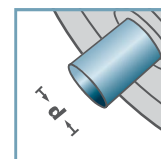
KTR/KTE



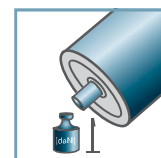
KTR-42



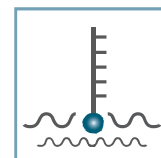
D [mm]
40 - 60



d [mm]
10; 12; 15; SW11



C [daN]
80; 120



T [°C]
0° - 80°



EP 2



Carton [pcs.]

ø40: -
ø50: 250
ø60: 200

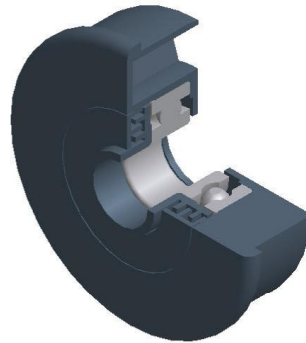
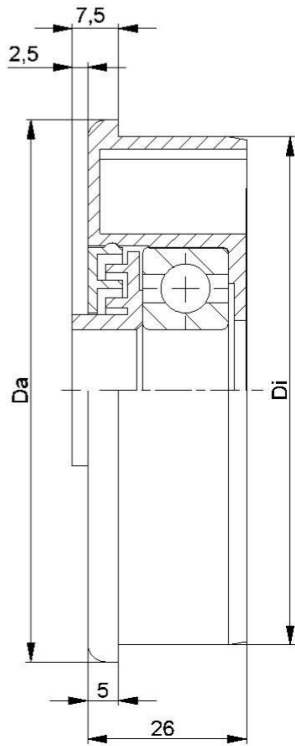
KTR-42				
Type	Di +0,25	Da	B1	Load Rating C [daN]
KTR-40x1,5.42	37,2	39,9	9,0	120
KTR-50x1,5.42	47,3	49,9	7,5	80
KTR-50x2,0.42	46,3	49,9	7,5	80
KTR-50x2,8.42	44,6	49,9	7,5	80
KTR-60x1,5.42	57,3	59,9	7,5	80
KTR-60x2,0.42	56,3	59,9	7,5	80
Other dimensions on request!				

- ☛ Housing: Plastic
- ☛ Single Labyrinth Seal: Plastic
- ☛ Bearing 6002

Please note: the single labyrinth seal for axis 15 mm is delivered separately and has to be locked at assembly.



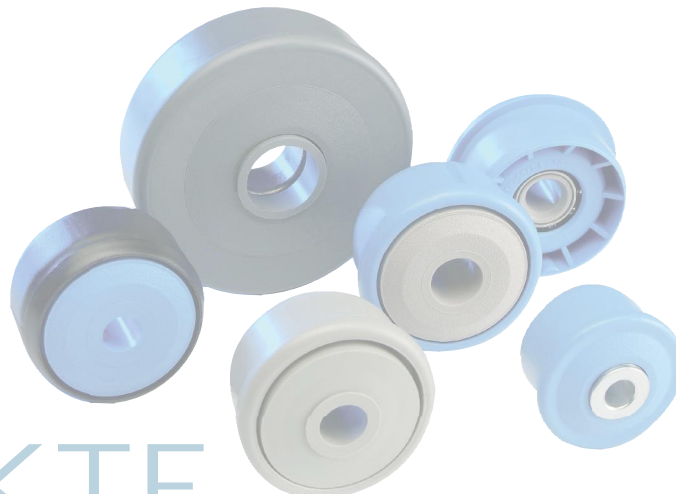
KTR/KTE



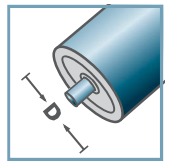
KTR-44			
Type	Di +0,2	Da	Load Rating C [daN]
KTR-89x3,0.44	83,3	88,9	150

Other dimensions on request!

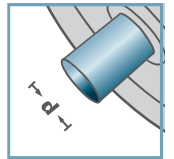
- ☛ Housing: Plastic
- ☛ Inner Labyrinth Seal: Plastic
- ☛ Outer Labyrinth Seal: Plastic
- ☛ Bearing 6204



KTR-44



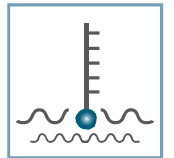
D [mm]
89



d [mm]
20



C [daN]
150



T [°C]
0° - 80°



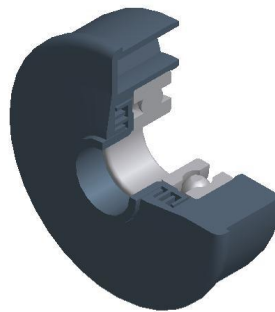
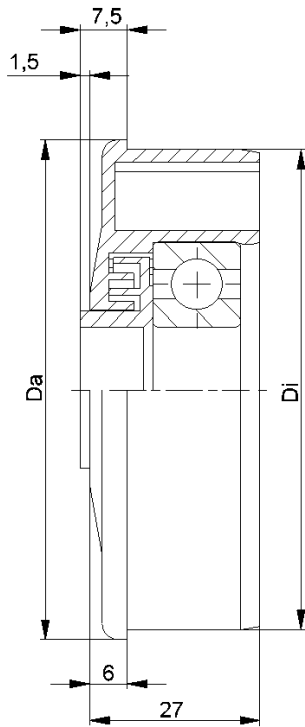
EP 2



Carton [pcs.]

80

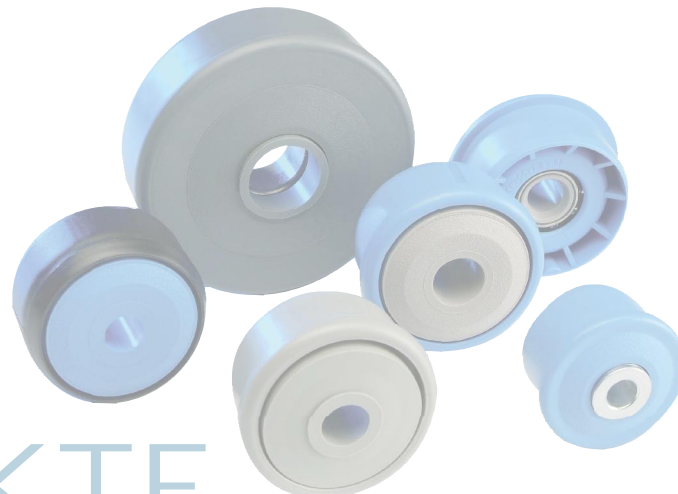
KTR/KTE



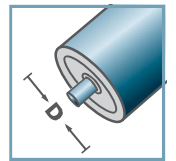
KTR-43/44			
Type	Di +0,2	Da	Load Rating C [daN]
KTR-63,5x2,9.43/.44	58,0	63,4	150
KTR-80x2,0.43/.44	76,4	79,9	150

Other dimensions on request!

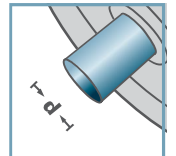
- Housing: Plastic
- Multiple Labyrinth Seal: Plastic
- Bearing 6303/6204



KTR-43/44



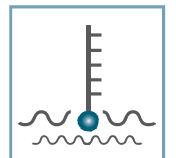
D [mm]
63,5 - 80



d [mm]
6303: 17
6204: 20



C [daN]
150



T [°C]
0° - 80°



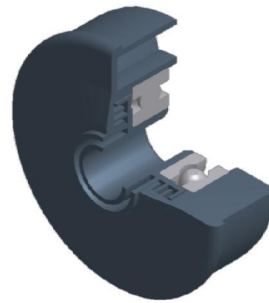
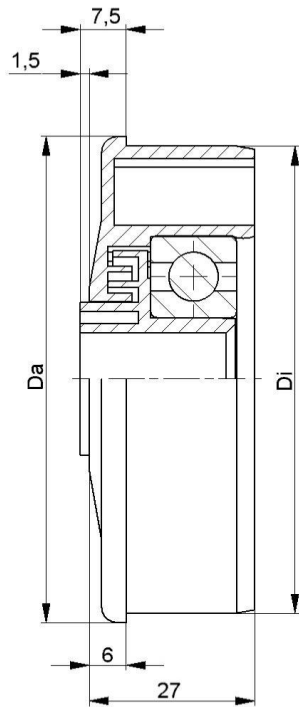
EP 2



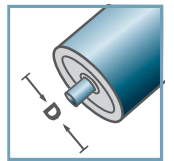
Carton [pcs.]

100

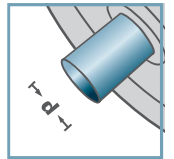
KTR/KTE



KTR-43/44



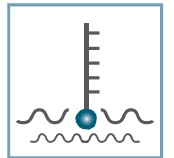
D [mm]
63,5 - 80



d [mm]
6303: 12
6204: 15



C [daN]
150



T [°C]
0° - 80°



EP 2



Carton [pcs.]

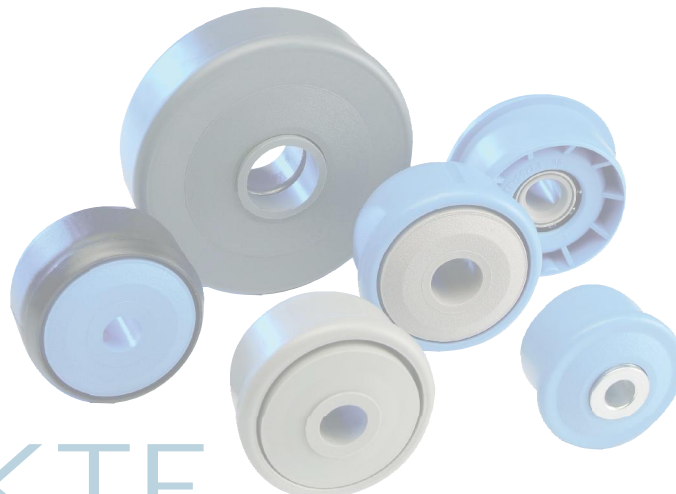
100

KTR-43/44

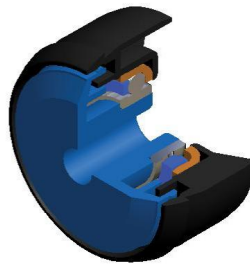
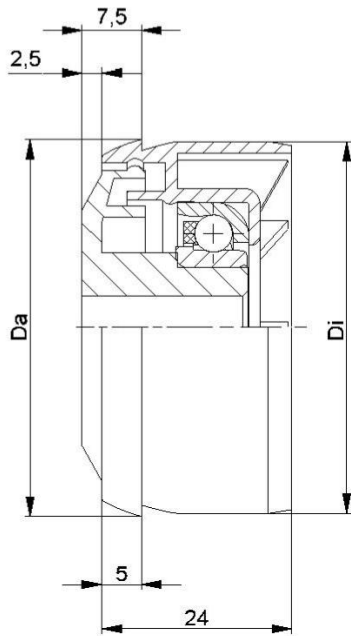
Type	Di +0,2	Da	Load Rating C [daN]
KTR-63,5x2,9.43/.44	58,0	63,4	150
KTR-80x2,0.43/.44	76,4	79,9	150

Other dimensions on request!

- ☛ Housing: Plastic
- ☛ Multiple Labyrinth Seal: Plastic
- ☛ Bearing 6303/6204



KTR/KTE

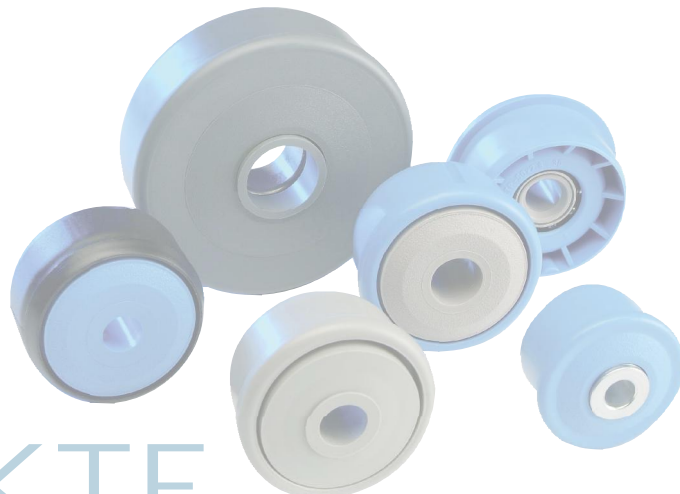


KTE-30			
Type	$D_i +0,3$	D_a	Load Rating C [daN]
KTE-50x1,5.30	47,1	47,9	80

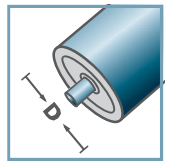
Other dimensions on request!

- ☛ Housing: Plastic
- ☛ Single Labyrinth Seal: Plastic
- ☛ Bearing RL-30
 - ☛ Bearing Shell: Steel, Hardened
 - ☛ Inner Race: Steel, Hardened
 - ☛ Cage: Plastic
 - ☛ Ball: Steel

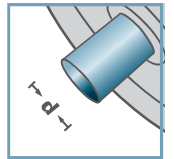
Please note: the single labyrinth seal for axis 15 mm is delivered separately and has to be locked at assembly.



KTE-30



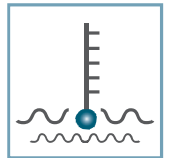
D [mm]
50



d [mm]
10; 12; 15; SW11



C [daN]
80



T [°C]
0° - 80°



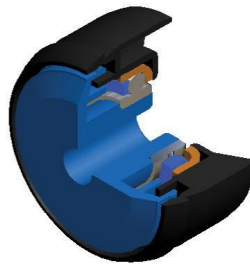
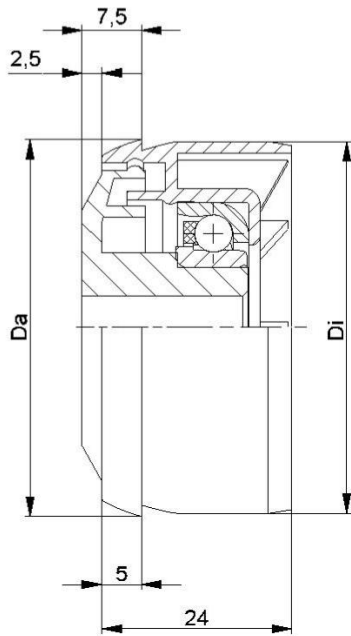
Oil



Carton [pcs.]

250

KTR/KTE

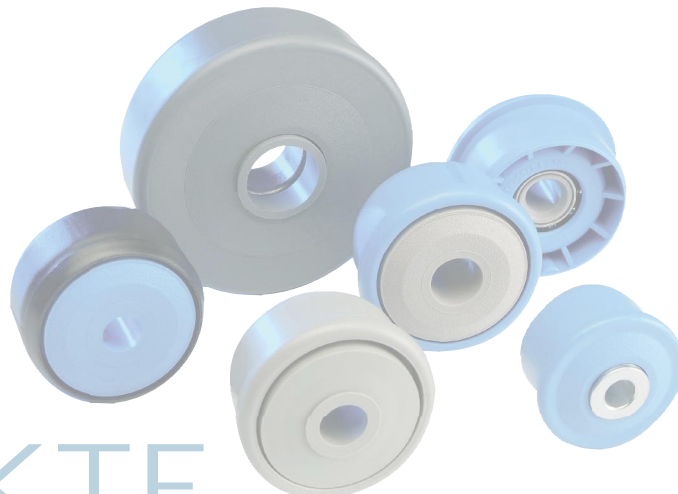


KTE-31			
Type	Di +0,3	Da	Load Rating C [daN]
KTE-50x1,5.31	47,1	47,9	25

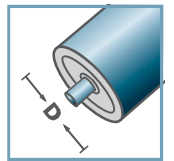
Other dimensions on request!

- ☛ Housing: Plastic
- ☛ Single Labyrinth Seal: Plastic
- ☛ Bearing RL-31
 - ☛ Bearing Shell: 1.4301
 - ☛ Inner Race: 1.4305
 - ☛ Cage: Plastic
 - ☛ Ball: 1.4301

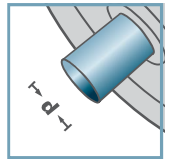
Please note: the single labyrinth seal for axis 15 mm is delivered separately and has to be locked at assembly.



KTE-31



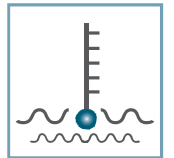
D [mm]
50



d [mm]
10; 12; 15; SW11



C [daN]
25



T [°C]
0° - 80°



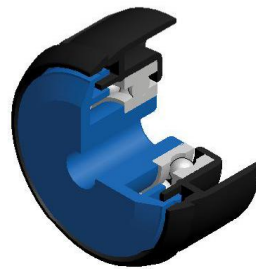
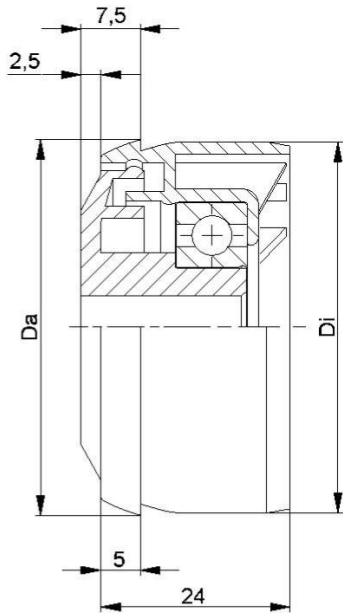
Oil



Carton [pcs.]

250

KTR/KTE

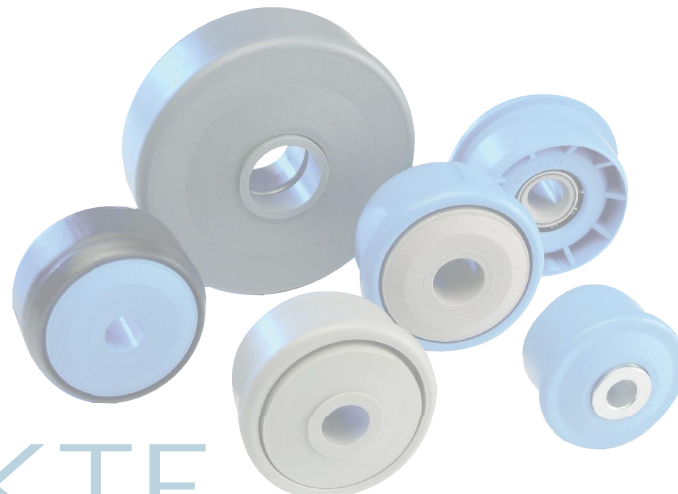


KTE-42			
Type	Di +0,3	Da	Load Rating C [daN]
KTE-50x1,5.42	47,1	47,9	80

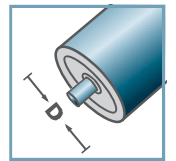
Other dimensions on request!

- ☛ Housing: Plastic
- ☛ Single Labyrinth Seal: Plastic
- ☛ Bearing 6002

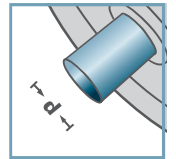
Please note: the single labyrinth seal for axis 15 mm is delivered separately and has to be locked at assembly.



KTE-42



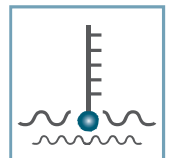
D [mm]
50



d [mm]
10; 12; 15; SW11



C [daN]
80



T [°C]
0° - 80°



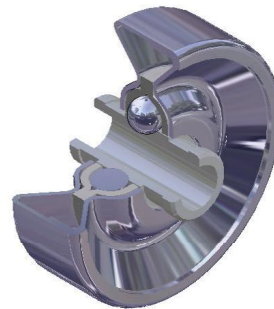
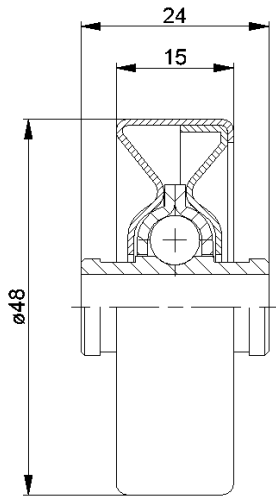
EP 2



Carton [pcs.]

250

KTR/KTE

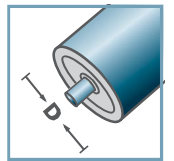


SLR	
Type	Load Rating C [daN]
SLR-480	20
Other dimensions on request!	

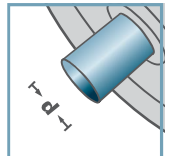
☛ Skate Wheel: Steel



SLR-



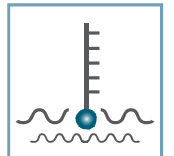
D [mm]
-



d [mm]
6; 8



C [daN]
20



T [°C]
-30° - 140°



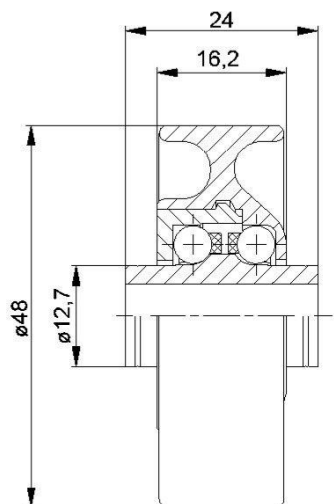
-



Carton [pcs.]

250

KLR/SLR/SR



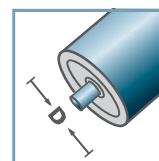
KLR-02/03			
Type	Normal	Stainless	Load Rating
	.02	.03	C [daN]
KLR-480	x	x	15

Other dimensions on request!

- ☛ Housing: Plastic
- ☛ Inner Race: Plastic
- ☛ Bearing Cap: Plastic
- ☛ Ball Cage: Plastic
- ☛ Ball
 - ☛ 02: Steel
 - ☛ 03: 1.4034

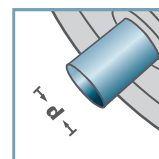


KLR-02
KLR-03



D [mm]

-



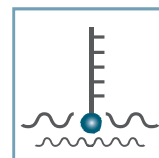
d [mm]

6; 8



C [daN]

15



T [°C]

0° - 80°



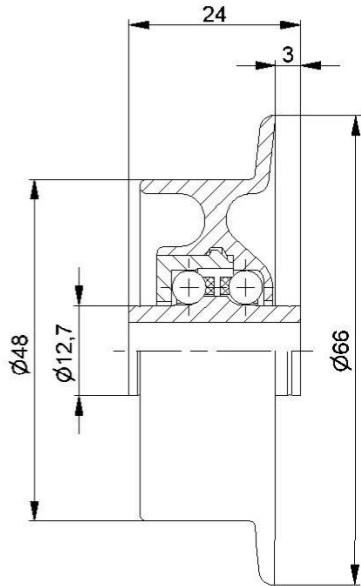
-



Carton [pcs.]

250

KLR/SLR/SR



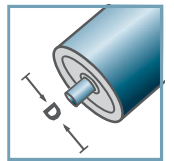
SR-02/03			
Type	Normal .02	Stainless .03	Load Rating C [daN]
SR-480	x	x	10

Other dimensions on request!

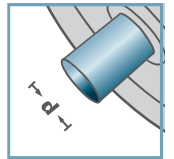
- ☛ Housing: Plastic
- ☛ Inner Race: Plastic
- ☛ Bearing Cap: Plastic
- ☛ Ball Cage: Plastic
- ☛ Ball
 - ☛ 02: Steel
 - ☛ 03: 1.4034



SR-02
SR-03



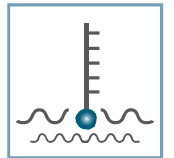
D [mm]
-



d [mm]
6; 8



C [daN]
15



T [°C]
0° - 80°



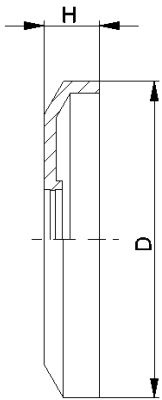
-



Carton [pcs.]

250

KLR/SLR/SR

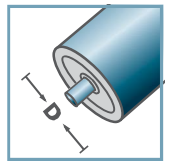


DK-KLR		
Type	D	H
DK-KLR-02	40,5	7
Other dimensions on request!		

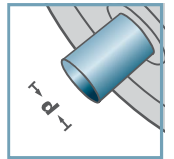
Seal Bonnet: Plastic



DK-KLR-02



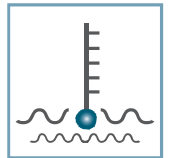
D [mm]
-



d [mm]
-



C [daN]
-



T [°C]
0° - 80°

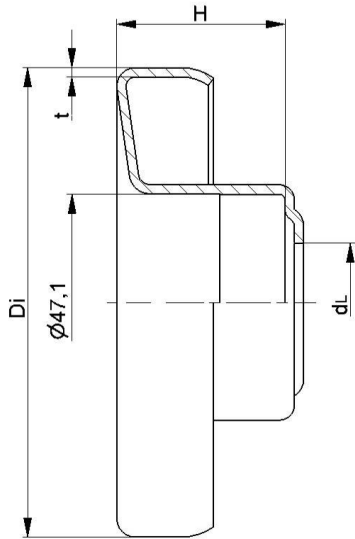


-

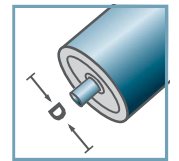


Carton [pcs.]

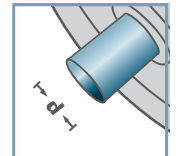
KLR/SLR/SR



LH-6204



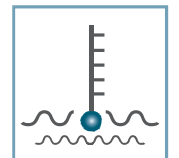
D [mm]
63,5 - 133



d [mm]
20



C [daN]
-



T [°C]
-

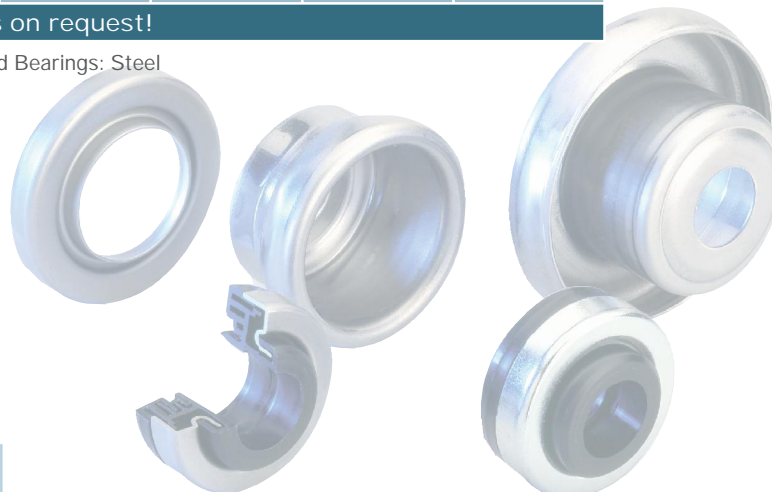


6204:
D47, d20, H14

LH-6204				
Type	Di	H	dL	t
LH-63,5x1,75/6204	60,5	33	26	1,5
LH-63,5x2,9/6204	58,2	33	26	1,5
LH-80x2,0/6204	76,5	36,5	26	2,0
LH-80x3,0/6204	74,5	36,5	26	2,0
LH-89x3,0/6204	83,5	36,5	26	2,0
LH-108x2,5/6204	103,3	36,5	26	2,0
LH-108x2,9/6204	102,8	36,5	26	2,0
LH-108x3,25/6204	102,1	36,5	26	2,0
LH-133x3,6/6204	126,3	36,5	26	2,5

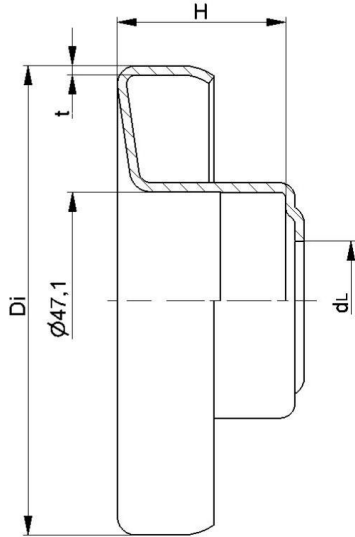
Other dimensions on request!

🔩 Retainer for Standard Bearings: Steel

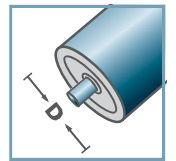


Skeleton Container [pcs.]
 ø63,5: 6000
 ø80: 3500
 ø89: 3100
 ø108: 2000
 ø133: 1150

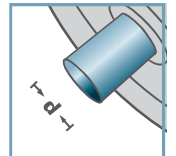
LH/FL



LH-6204 N



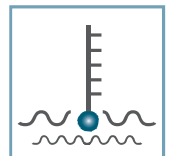
D [mm]
63,5 - 108



d [mm]
20



C [daN]
-



T [°C]
-



6204:
D47, d20, H14



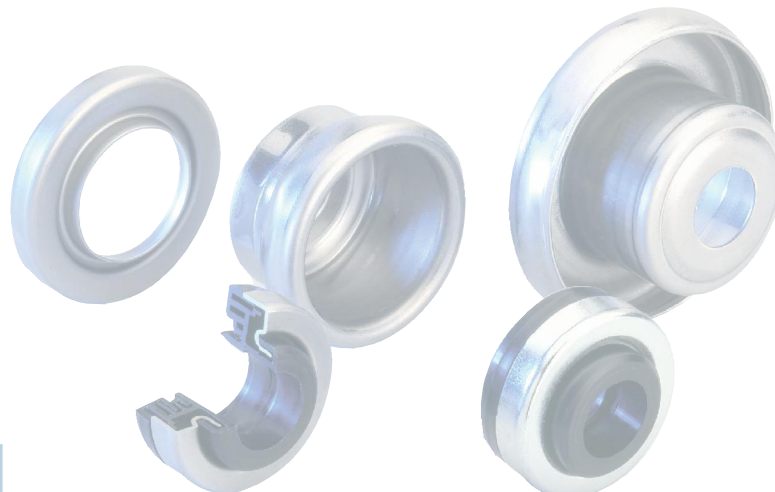
Skeleton
Container [pcs.]
ø63,5: 6000
ø89: 3100/3350
ø108: 2000

LH-6204 N				
Type	Di	H	dL	t
LH-63,5x1,75/6204N	60,5	31,8	21	1,5
LH-89x3,0/6204N *	83,7	33,5	21	1,5
LH-108x3,25/6204N	102,1	36,5	21	2,0

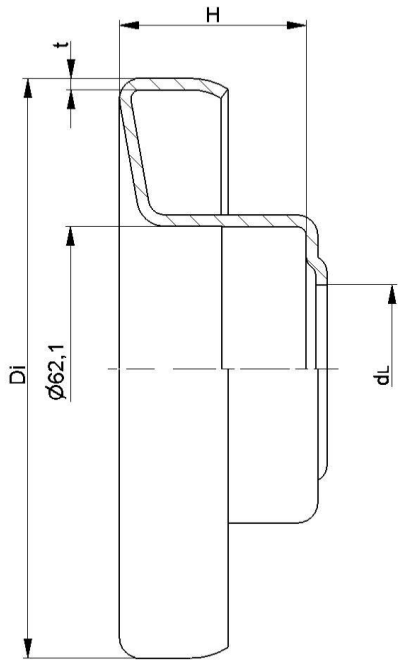
Other dimensions on request!

☛ Retainer for Standard Bearings: Steel

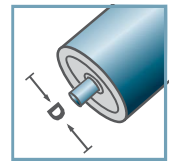
☛ *Alternative: Stainless



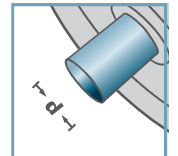
LH/FL



LH-6305



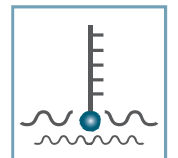
D [mm]
89 - 159



d [mm]
25



C [daN]
-



T [°C]
-



6305:
D62, d25, H17

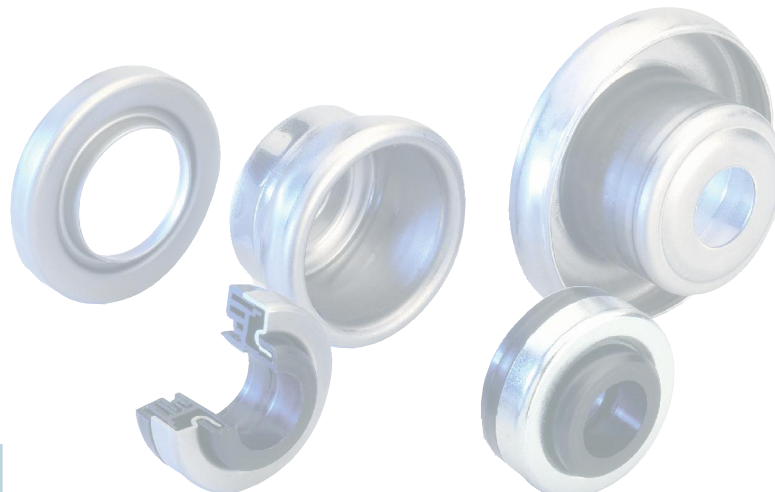


Skeleton
Container [pcs.]
ø89: 2600
ø108: 1900
ø133: 1150

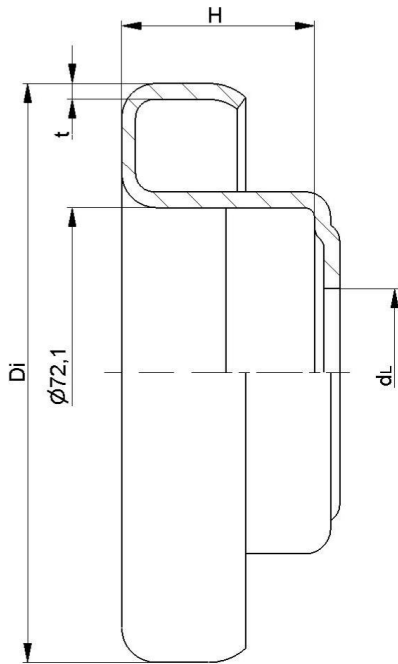
LH-6305				
Type	Di	H	dL	t
LH-89x3,0/6305	83,5	40,5	36,5	2,0
LH-108x2,5/6305	103,3	40,5	36,5	2,0
LH-108x3,25/6305	102,1	40,5	36,5	2,0
LH-127x2,9/6305	121,7	40,5	36,5	2,5
LH-133x3,6/6305	126,3	40,5	36,5	2,5
LH-159x4,5/6305	150,5	40,5	36,5	2,5

Other dimensions on request!

Retainer for Standard Bearings: Steel



LH/FL

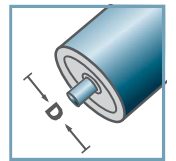


LH-6306				
Type	Di	H	dL	t
LH-108x3,25/6306	102,1	42	36,5	3,0
LH-133x3,6/6306	126,3	42	36,5	3,5
LH-159x4,5/6306	150,5	42	36,5	2,5

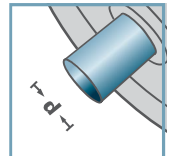
Other dimensions on request!

Retainer for Standard Bearings: Steel

LH-6306



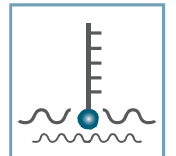
D [mm]
108 - 159



d [mm]
30



C [daN]
-



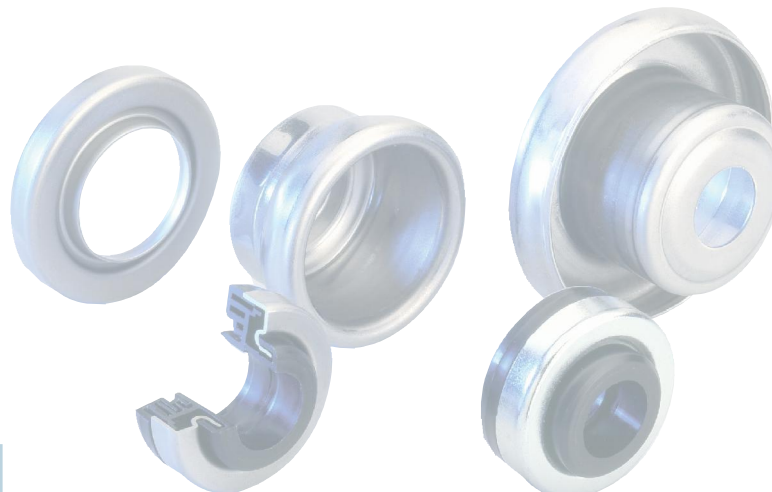
T [°C]
-



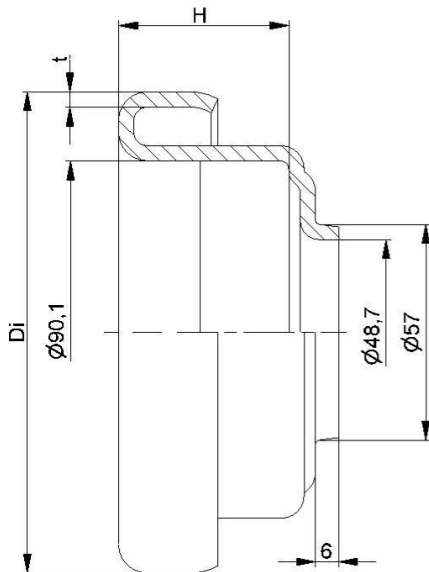
6306:
D72, d30, H19



Skeleton
Container [pcs.]
ø108: 1700
ø133: 1000



LH/FL

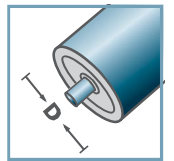


LH-6308			
Type	Di	H	t
LH-133x3,6/6308	126,3	44,6	4,0
LH-159x4,5/6308	150,8	44,6	4,0

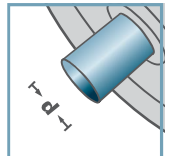
Other dimensions on request!

Retainer for Standard Bearings: Steel

LH-6308



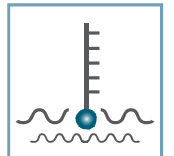
D [mm]
133 - 159



d [mm]
40



C [daN]
-



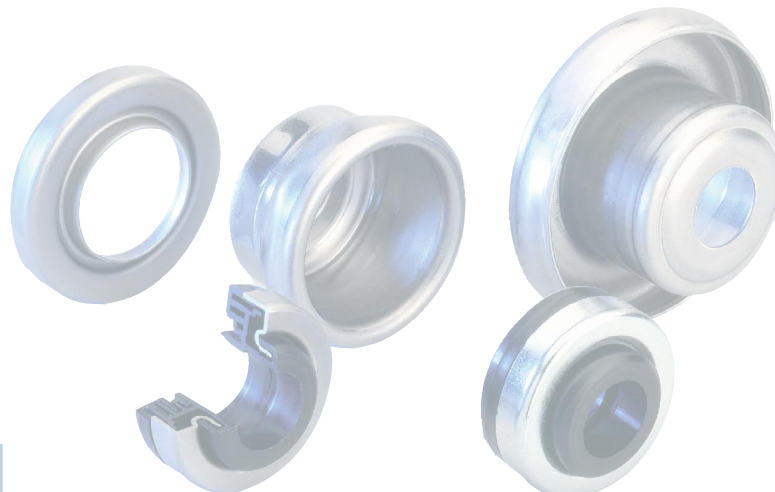
T [°C]
-



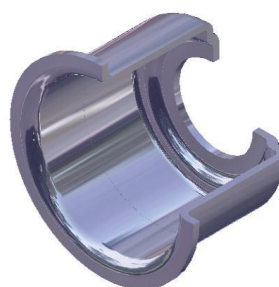
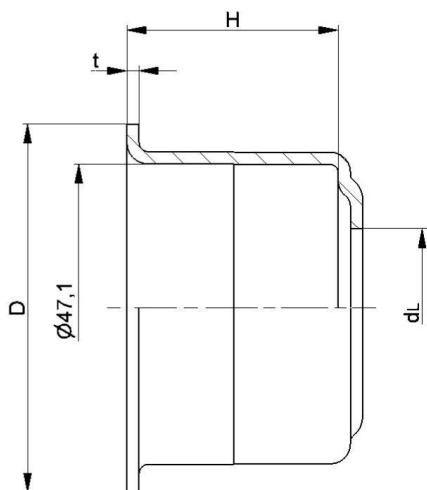
6308:
D90, d40, H23



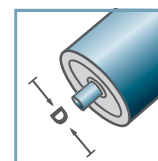
Skeleton
Container [pcs.]
ø133: 800
ø159: 600



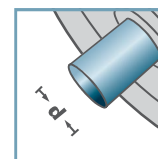
LH/FL



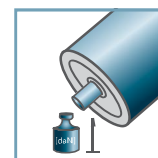
FL-6204



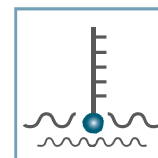
D [mm]
60 - 76



d [mm]
20



C [daN]
-



T [°C]
-



6204:
D47, d20, H14

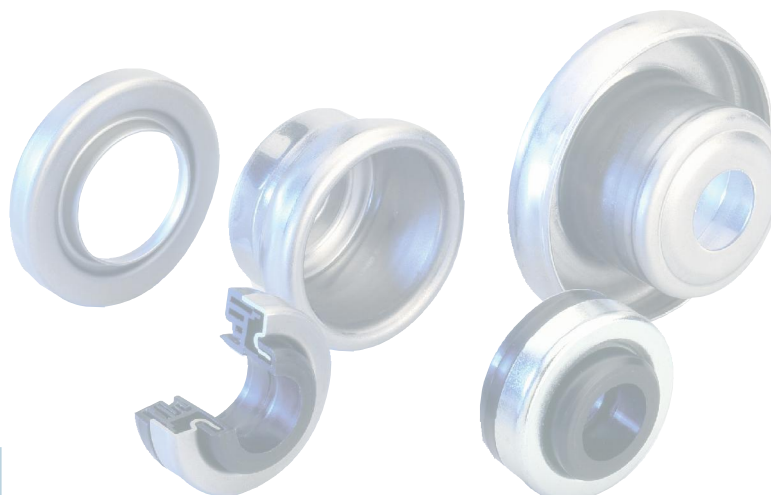


Skeleton
Container [pcs.]
ø60: 4000
ø63,5: 4000
ø70: 2000
ø76: 2000

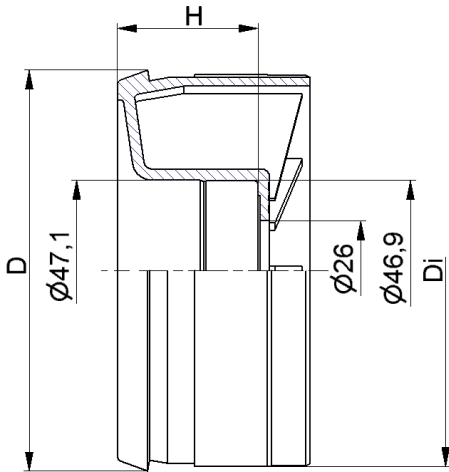
FL-6204				
Type	D	H	dL	t
FL-60x3,0/6204	58,1	34	26	2,0
FL-63,5x2,9/6204	60,0	34,5	26	2,0
FL-76/6204	73,5	34,5	26	2,0

Other dimensions on request!

☛ Retainer for Standard Bearings: Steel



LH/FL

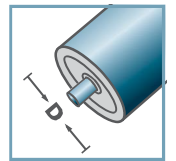


KLH-6204			
Type	Di	H	D
KLH-89x3,0/6204	83,2	36,5	85,3
KLH-108x3,0/6204	102,2	36,5	104,3

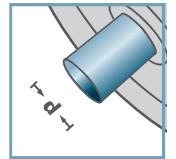
Other dimensions on request!

Retainer for Standard Bearings: Plastic

KLH-6204



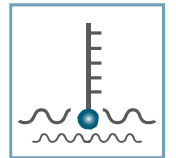
D [mm]
89 - 108



d [mm]
20



C [daN]
-



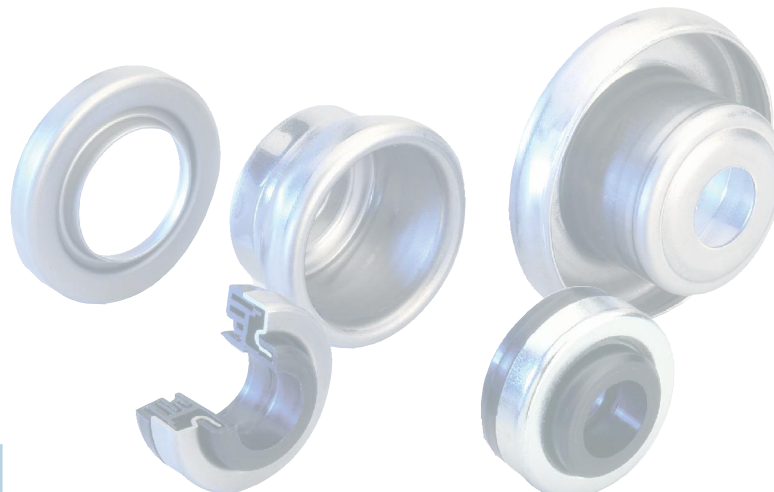
T [°C]
100°



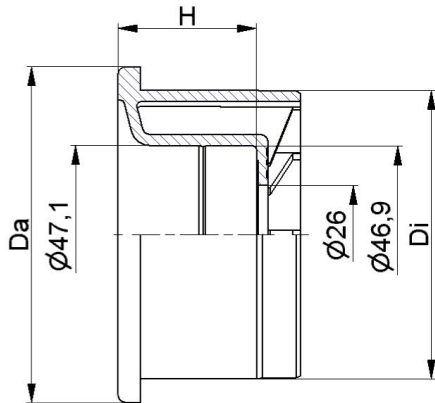
6204:
D47, d20, H14



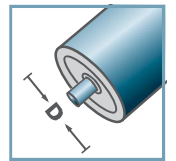
Skeleton
Container [pcs.]
1000



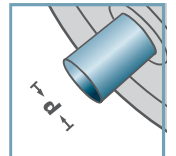
LH/FL



KLH-6204



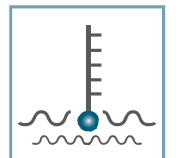
D [mm]
90



d [mm]
20



C [daN]
-



T [°C]
100°



6204:
D47, d20, H14

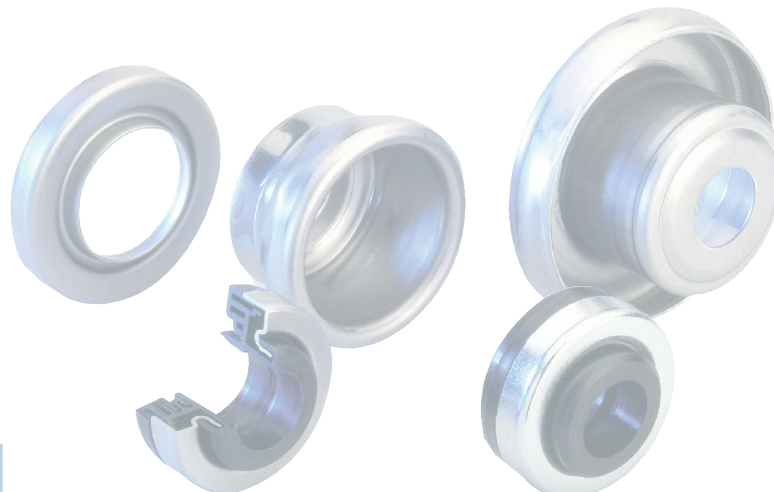


Skeleton
Container [pcs.]
1000

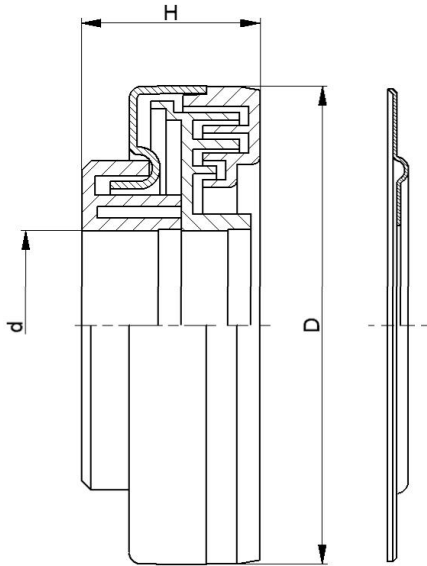
KLH-6204			
Type	Da	Di	H
KLH-90x7,0/6204	88,8	76,3	36,5

Other dimensions on request!

Retainer for Standard Bearings: Plastic



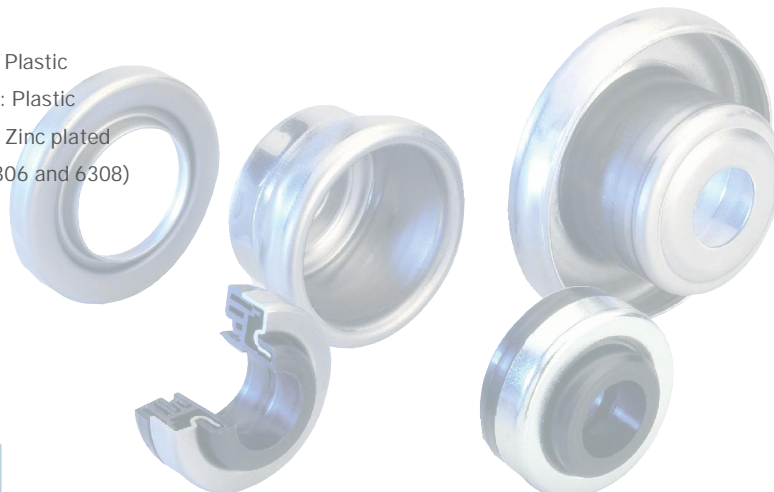
LH/FL



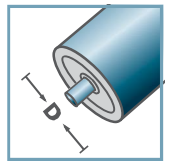
LH-			
Type	D	H	d
LH-6303	47	22,5	17
LH-6204	47	22,5	20
LH-6204 N	47	20,0	20
LH-6305	62	23,5	25
LH-6206	62	23,5	30
LH-6306	72	24,5	30
LH-6308	90	23,1	40

Other dimensions on request!

- ☛ Seal Bonnet: Steel, Zinc plated
- ☛ Rain Cap: Plastic
- ☛ Inner Labyrinth Seal: Plastic
- ☛ Outer Labyrinth Seal: Plastic
- ☛ Sheet Gasket: Steel, Zinc plated
(not available with 6306 and 6308)

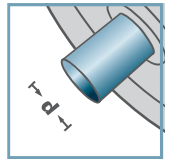


LH-



D [mm]

-

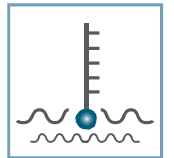


d [mm]
17 - 40



C [daN]

-



T [°C]
0° - 80°



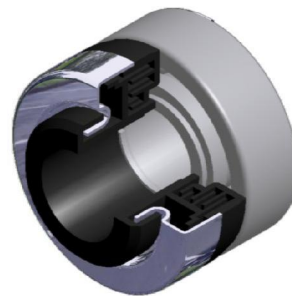
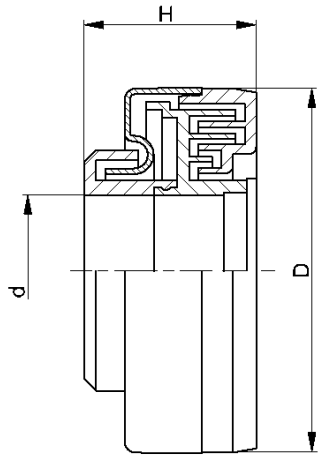
-



Carton [pcs.]

6204: 500
6305: 500

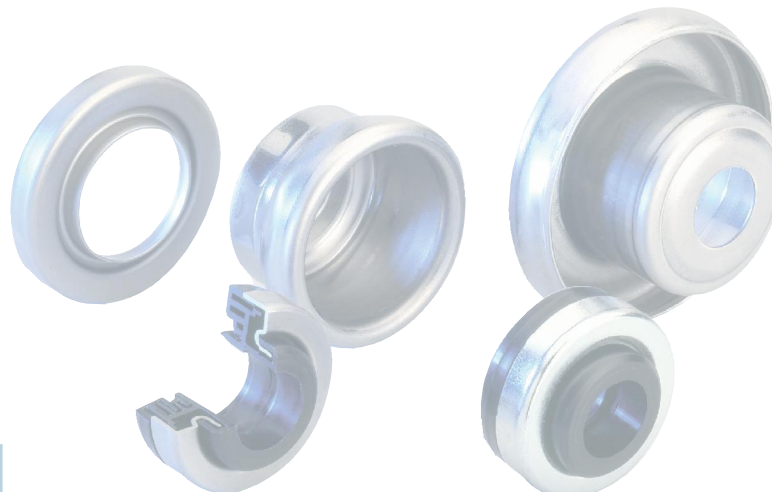
LH/FL



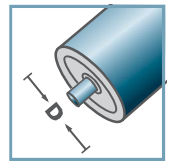
LH- mounted, greased			
Type	D	H	d
LH-6303 M	47	22,5	17
LH-6204 M	47	22,5	20
LH-6305 M	62	23,5	25
LH-6308 M	90	23,1	40

Other dimensions on request!

- ☛ Seal Bonnet: Steel, Zinc plated
- ☛ Rain Cap: Plastic
- ☛ Inner Labyrinth Seal: Plastic
- ☛ Outer Labyrinth Seal: Plastic
- ☛ Grease: EP2

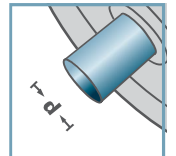


LH-



D [mm]

-

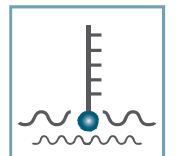


d [mm]
17, 20



C [daN]

-



T [°C]
0° - 80°



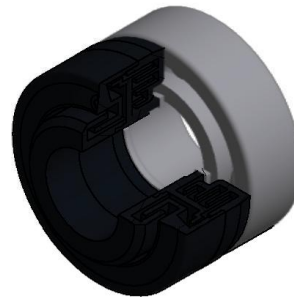
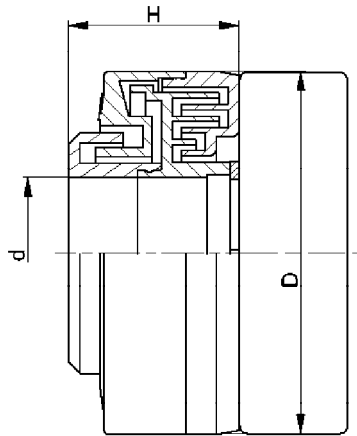
-



Carton [pcs.]



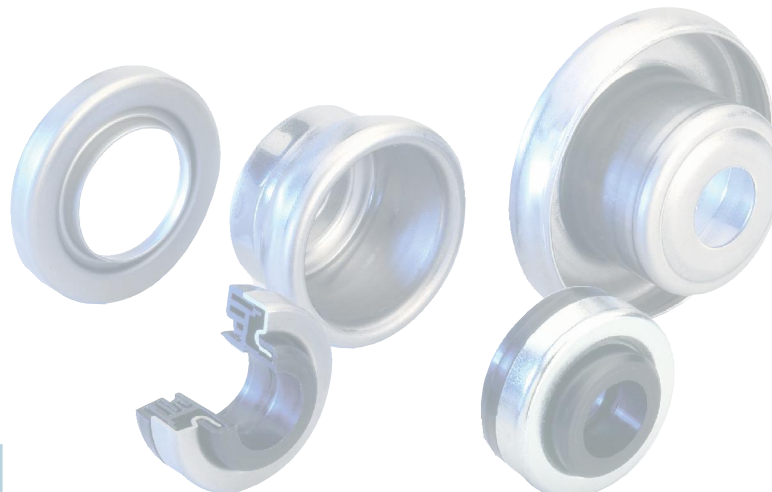
LH/FL



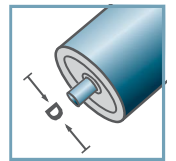
LH-			
Type	D	H	d
LH-6303 KU	47	22,5	17
LH-6204 KU	47	22,5	20

Other dimensions on request!

- ☛ Seal Bonnet: Plastic
- ☛ Rain Cap: Plastic
- ☛ Inner Labyrinth Seal: Plastic
- ☛ Outer Labyrinth Seal: Plastic

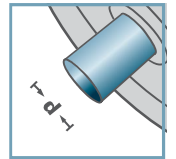


LH-



D [mm]

-

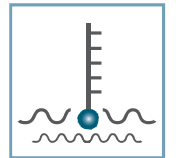


d [mm]
20



C [daN]

-



T [°C]

0° - 80°



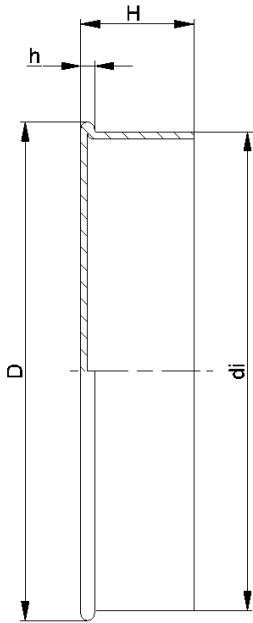
-



Carton [pcs.]



LH/FL

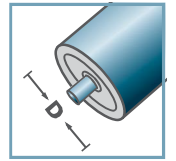


LH- closed				
Type	D	di	H	h
LH-6204	50	47,4	14,7	1,8

Other dimensions on request!

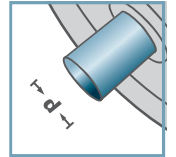
☛ Seal Bonnet: Steel

LH-



D [mm]

-



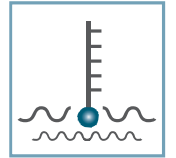
d [mm]

-



C [daN]

-



T [°C]

-

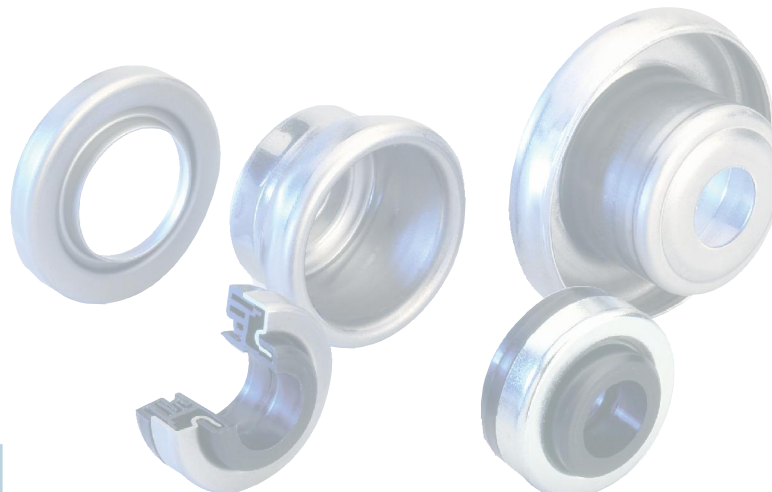


-

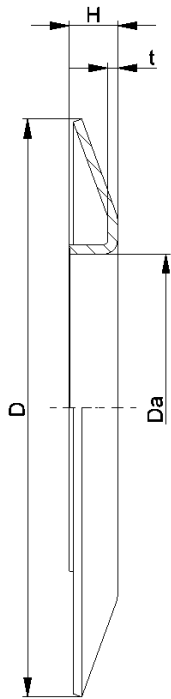


Carton [pcs.]

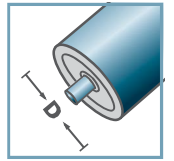
ST-6204 125
ST-6305 100
ST-6306 100



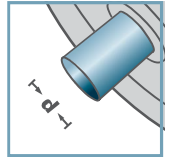
LH/FL



BS-



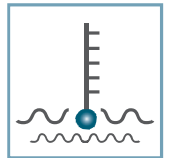
D [mm]
-



d [mm]
-



C [daN]
-



T [°C]
-



-

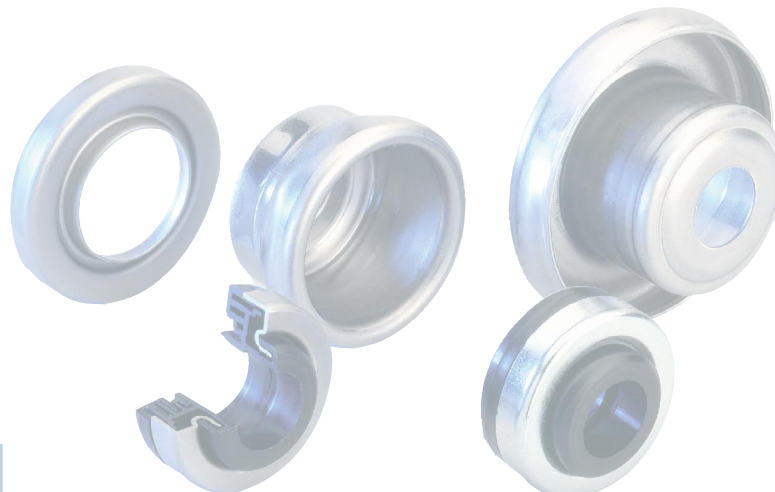


Carton [pcs.]

BS-				
Type	Da ±0.1	D -2	H ±0.5	t
BS-50-130	49,9	130	10	1,5
BS-60-130	59,9	130	10	1,5
BS-80-150	79,9	150	14	2,5
BS-89-150	88,9	150	14	2,5
BS-108-150	107,9	150	14	2,5

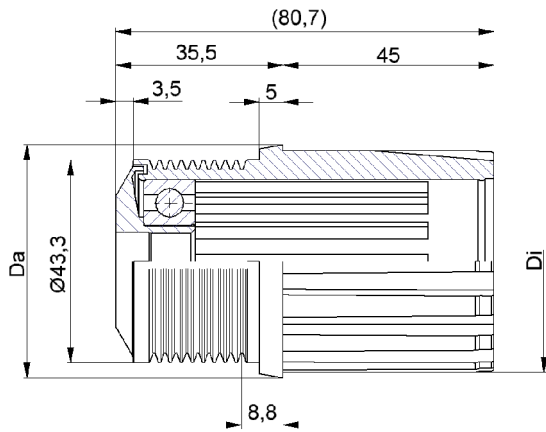
Other dimensions on request!

Wheel Flange: Steel



LH/FL

25

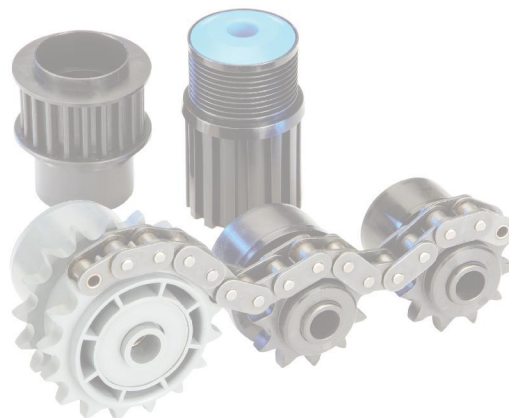


V-Beltdrive PJ VR-

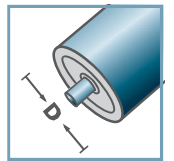
Type	Di	Da	Load Rating C [daN]
50x1,5.40	47,3	49,8	80

Driving belt available on request!

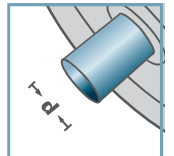
- ☛ Housing: Plastic
- ☛ Single Labyrinth Seal: Plastic
- ☛ Bearing 6202
also with two bearings available



VR-40



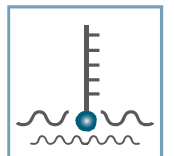
D [mm]
50



d [mm]
12; SW11



C [daN]
-



T [°C]
0° - 80°



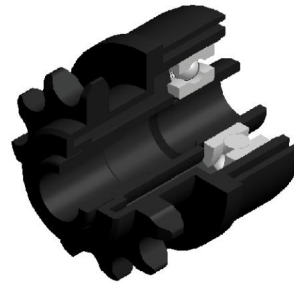
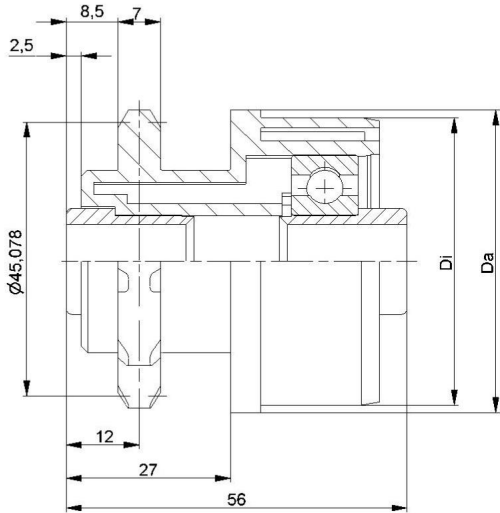
EP 2



Carton [pcs.]

100

Plastic VR-Belt Drive

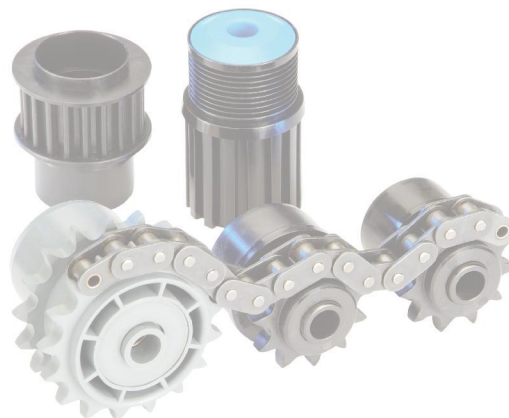


KKR-1/2" x5/16" -Z11 for fix driving

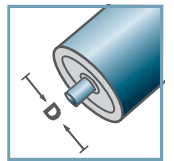
Type	Di +0,2	Da
50x1,5.40	47,3	49,9
50x2,8.40	44,6	49,9

Other dimensions on request!

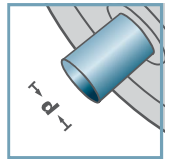
- ☛ Housing: Plastic
- ☛ Reducing Bush: Plastic
- ☛ Bearing 6202



KKR-40



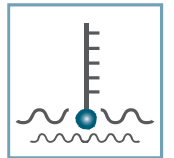
D [mm]
50



d [mm]
12



C [daN]
-



T [°C]
0° - 80°



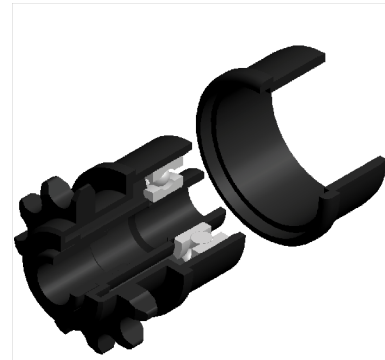
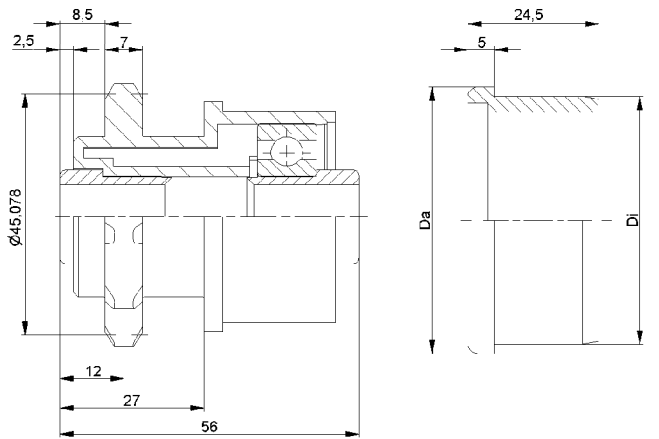
EP 2



Carton [pcs.]

150

Plastic Sprocket Wheel

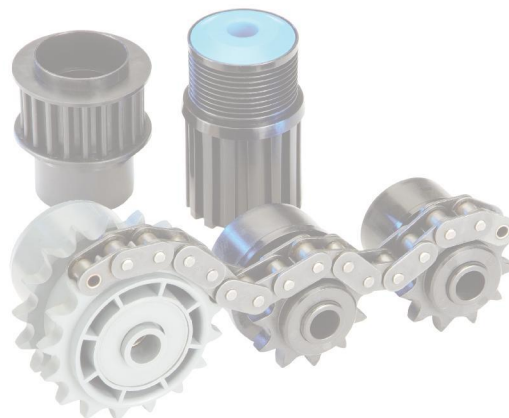


KKR-1/2" x5/16" -Z11 for friction driving

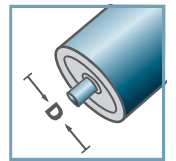
Type	Di +0,2	Da
50x1,5.40 ST	47,3	49,9

Other dimensions on request!

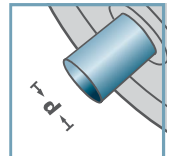
- ☛ Housing: Plastic
- ☛ Reducing Bush: Plastic
- ☛ Sliding Ring: Plastic
- ☛ Bearing 6202



KKR-40



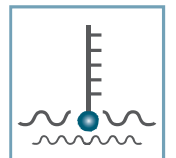
D [mm]
50



d [mm]
12



C [daN]
-



T [°C]
0° - 80°



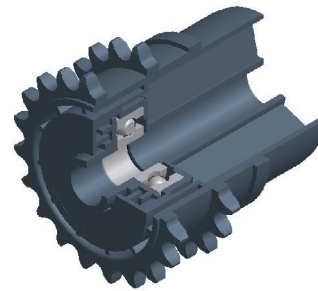
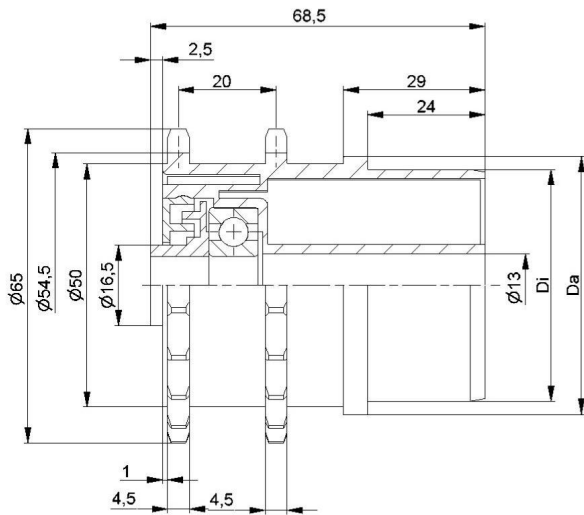
EP 2



Carton [pcs.]

Housing:
150
Sliding Ring:
300

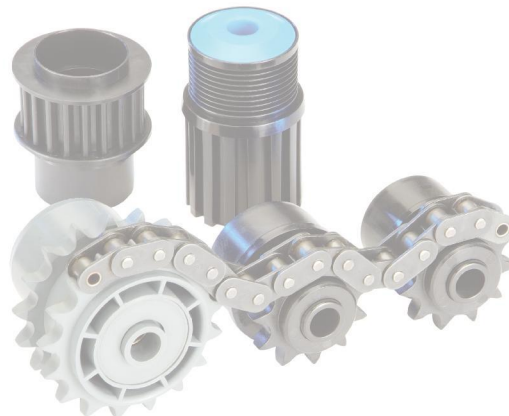
Plastic Sprocket Wheel



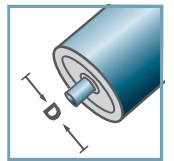
KKR-3/8" x3/16" -Z20		
Type	Di +0,2	Da
53x3,0.41	47,6	52,9

Other dimensions on request!

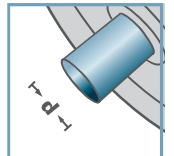
- ☛ Housing: Plastic
- ☛ Inner Labyrinth Seal: Plastic
- ☛ Outer Labyrinth Seal: Plastic
- ☛ Bearing 6201



KKR-41



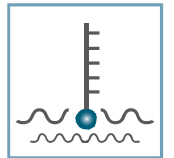
D [mm]
53



d [mm]
12



C [daN]
-



T [°C]
0° - 80°



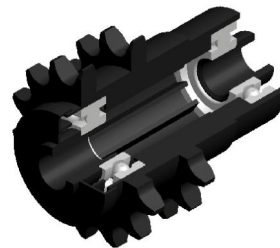
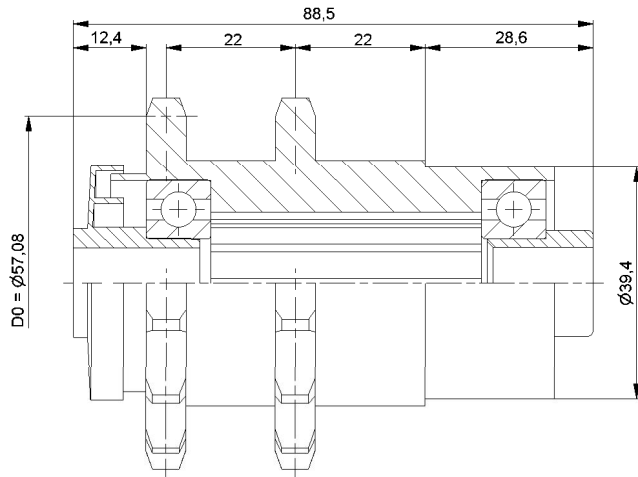
EP 2



Carton [pcs.]

60

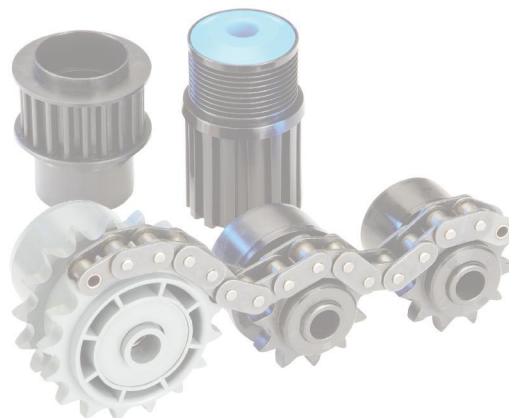
Plastic Sprocket Wheel



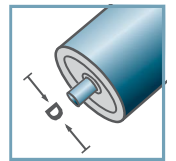
KKR-1/2" x5/16" -Z14

Other dimensions on request!

- ☛ Housing: Plastic
- ☛ Labyrinth Seal: Plastic
- ☛ Reducing Bush: Plastic
- ☛ Bearing 6202

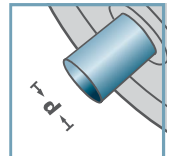


KKR-40



D [mm]

-



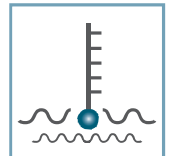
d [mm]

12



C [daN]

-



T [°C]

0° - 80°



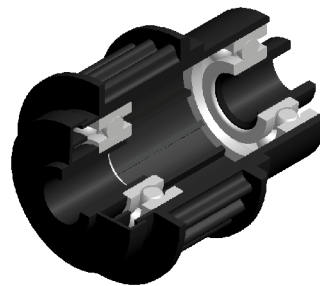
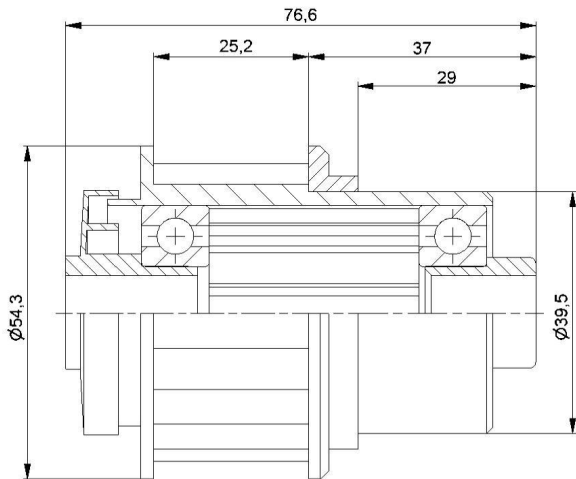
-



Carton [pcs.]

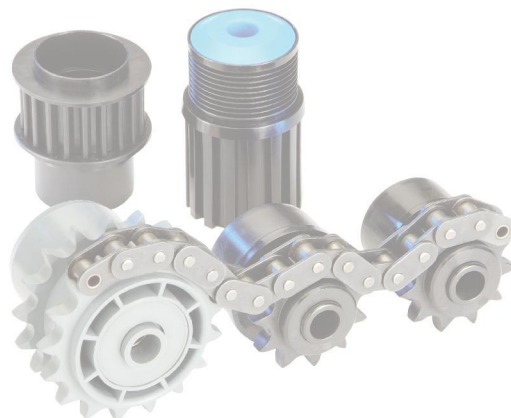
150

Plastic Sprocket Wheel

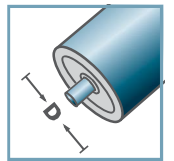


KZA-Z20.40	
Other dimensions on request!	

- ☛ Housing: Plastic
- ☛ Labyrinth Seal: Plastic
- ☛ Reducing Bush: Plastic
- ☛ Bearing 6202

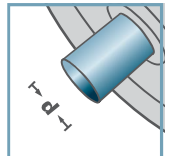


KZA-40



D [mm]

-



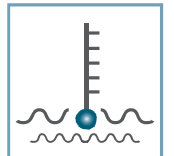
d [mm]

12



C [daN]

-



T [°C]

0° - 80°



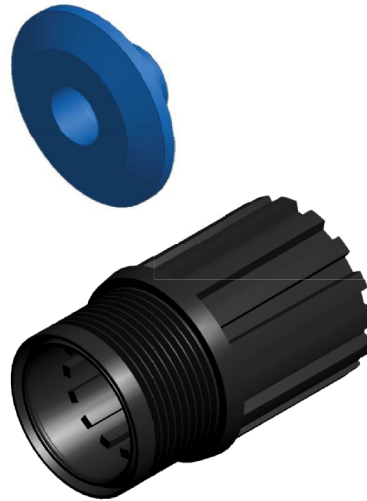
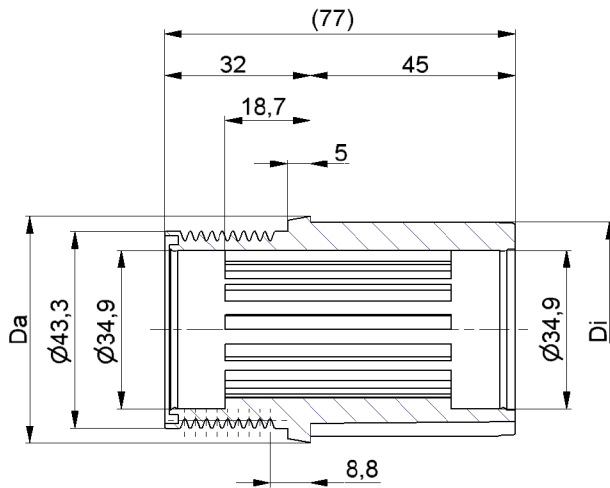
-



Carton [pcs.]

100

Plastic Synchronous Belt Drive



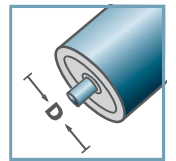
VR-		
Type	Di	Da
50x1,5.40	47,3	49,8

Driving belt available on request!

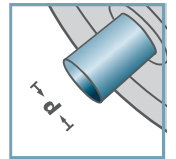
Housing: Plastic



VR-40



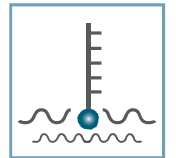
D [mm]
50



d [mm]
-



C [daN]
-



T [°C]
0° - 80°



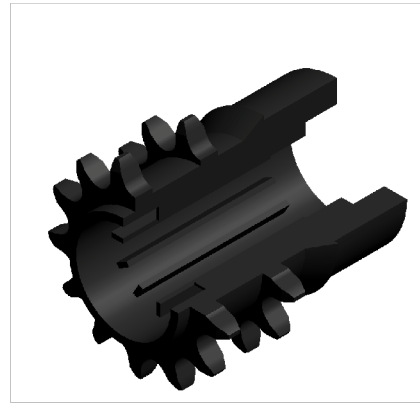
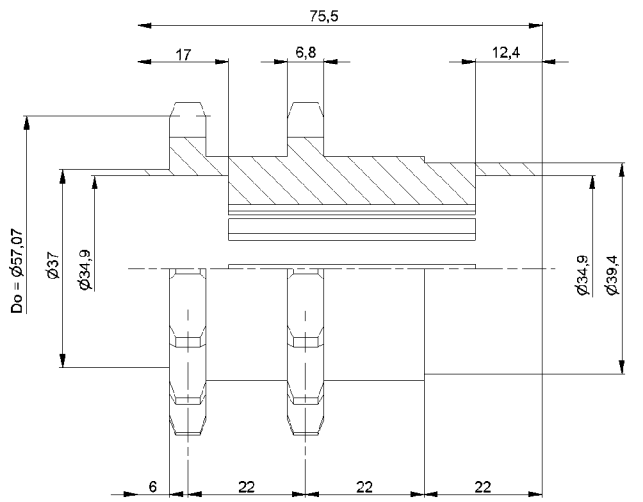
-



Carton [pcs.]

100

Plastic VR-Belt Drive Wheel



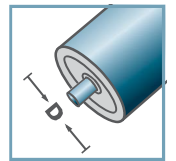
KKR-1/2" x5/16" -Z14

Other dimensions on request!

☞ Housing: Plastic

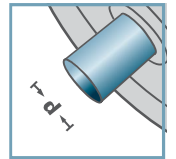


KKR-40



D [mm]

-



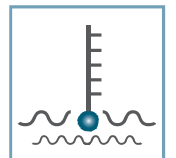
d [mm]

-



C [daN]

-



T [°C]

0° - 80°



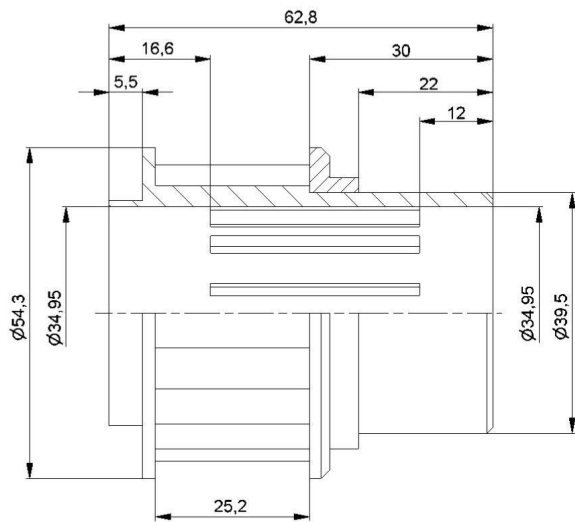
-



Carton [pcs.]

500

Plastic Sprocket Wheel



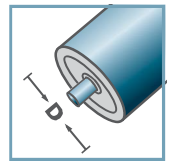
KZA-Z20.40

Other dimensions on request!

 Housing: Plastic

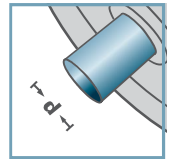


KZA-40



D [mm]

-



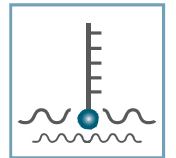
d [mm]

-



C [daN]

-



T [°C]

0° - 80°



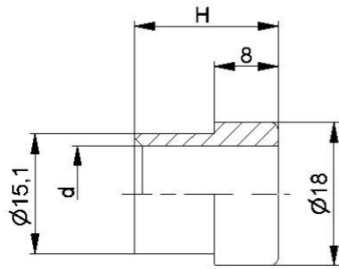
-



Carton [pcs.]

140

Plastic Synchronous Belt Drive

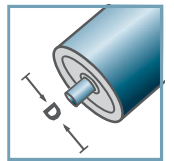


KKR-40		
	d	H
KKR-40	10	19
KKR-40	12	18
KKR-40	14	19
KKR-40	SW11	19
Other dimensions on request!		

Reducing Bush: Plastic

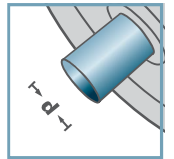


KKR-40



D [mm]

-



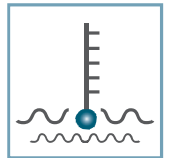
d [mm]

10; 12; 14; SW11



C [daN]

-



T [°C]

0° - 80°



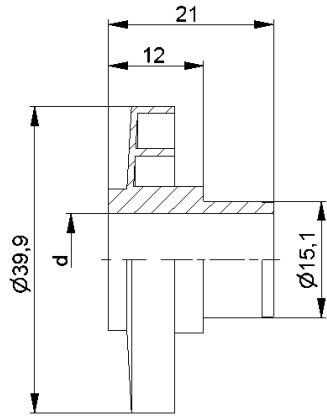
-



Carton [pcs.]

500/8000

Reducing Bush

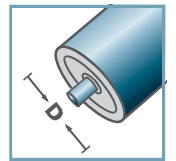


KKR-40	
Typ	d
KKR-40	10
KKR-40	12
KKR-40	14
KKR-40	SW11
Other dimensions on request!	

Labyrinth Seal: Plastic

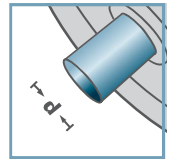


KKR-40



D [mm]

-



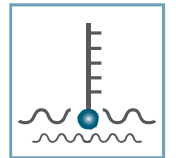
d [mm]

10; 12; 14; SW11



C [daN]

-



T [°C]

0° - 80°



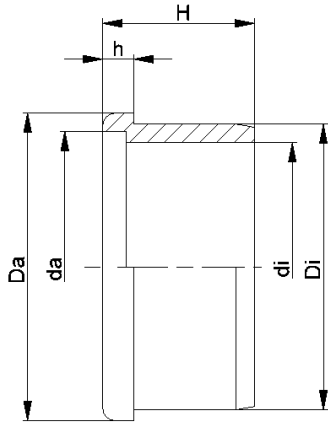
-



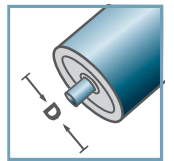
Carton [pcs.]

200/1000

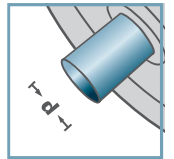
Labyrinth Seal



KKR-40



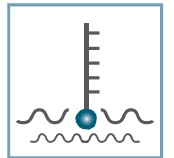
D [mm]
50 - 60



d [mm]
-



C [daN]
-



T [°C]
0° - 80°



-



Carton [pcs.]

ø50: 400
ø60: 250

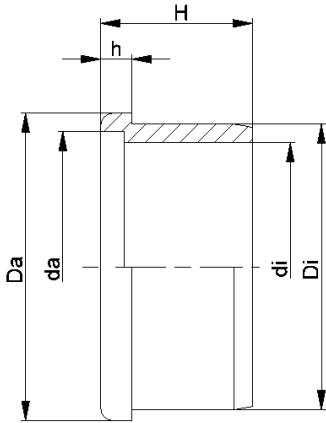
KKR-40						
Typ	Di	Da	di	da	H	h
50x1,5	47,25	50	39,3	42,6	25,2	5
50x2,8	44,7	50	39,3	42,6	25,2	5
60x1,5	57,3	60	47,0	50,7	25,5	5
60x2,0	56,3	60	47,0	50,7	25,5	5

Other dimensions on request!

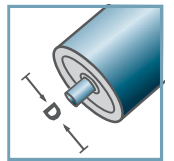
Distance Ring Fix: Plastic



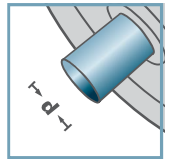
Distance Ring Fix



KKR-40



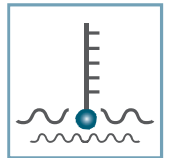
D [mm]
50 - 60



d [mm]
-



C [daN]
-



T [°C]
0° - 80°



-



Carton [pcs.]

400

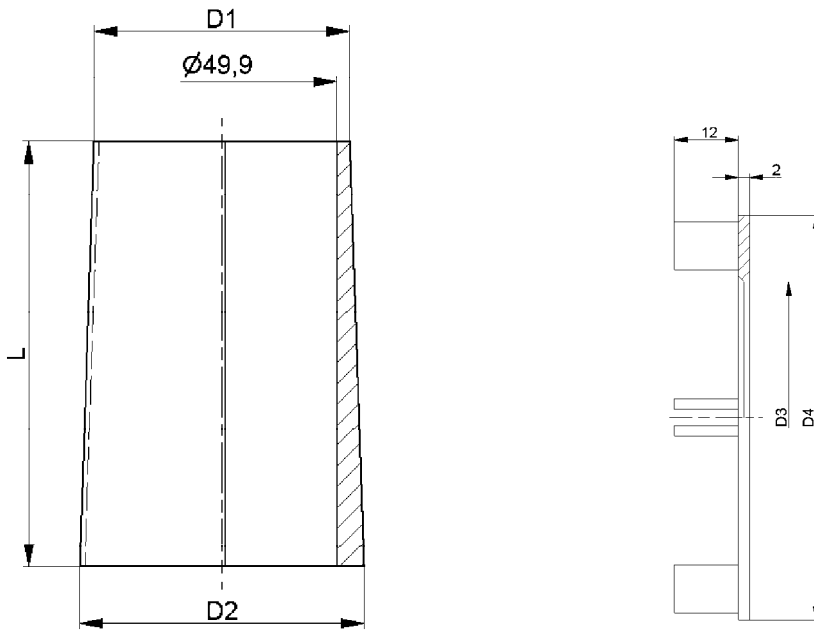
KKR-40						
Typ	Di	Da	di	da	H	h
50x1,5	47,2	50	40,6	44,6	25	5

Other dimensions on request!

Distance Ring Friction: Plastic



Distance Ring Friction



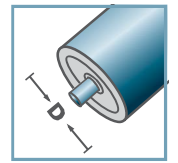
KF-50					
Type A	D1	D2	L	D3	D4
KF-50 I-a Type A	53,4	59,7	92,5	-	-
KF-50 I-b Type A	54,0	59,7	95,5	-	-
KF-50 II Type A	60,0	66,5	100,0	-	-
KF-50 III Type A	66,5	73,0	99,0	-	-
KF-50 IV Type A	73,5	80,0	100,0	50,6	75,5
KF-50 V Type A	80,0	86,5	99,5	50,7	81,7
KF-50 VI Type A	86,5	93,5	100,0	50,6	87,7
KF-50 VII Type A	93,5	100,0	100,0	50,6	94,3
KF-50 VIII Type A	100,0	106,5	95,5	-	-
KF-50 IX Type A	106,5	113,0	95,5	-	-
KF-50 X Type A	113,0	119,5	95,5	-	-

Other dimensions on request!

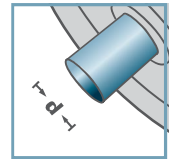
- ☛ Conic Roller: Plastic
- ☛ Endcap: Plastic



KF-50



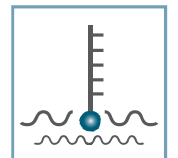
D [mm]
50



d [mm]
-



C [daN]
-



T [°C]
0° - 80°

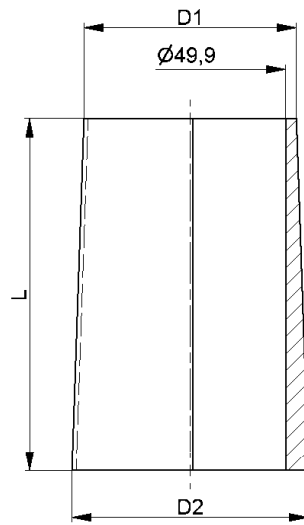


-



Carton [pcs.]

Taper Sleeves



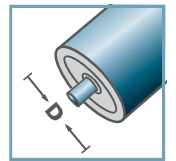
KF-50			
Type	D1	D2	L
KF-50 I Type B	54,0	59,9	90,0
KF-50 II Type B	59,9	66,6	100,0
KF-50 III Type B	66,6	73,4	100,0
KF-50 IV Type B	73,4	80,1	100,0
KF-50 V Type B	80,1	86,9	100,0
KF-50 VI Type B	86,9	93,6	100,0
KF-50 VII Type B	93,6	100,4	100,0
KF-50 VIII Type B	100,4	107,1	100,0
KF-50 IX Type B	107,1	113,9	100,0
KF-50 X Type B	113,9	120,9	100,0

Other dimensions on request!

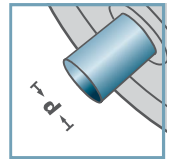
- ☛ Conic Roller: Plastic
- ☛ Endcap: not necessary



KF-50



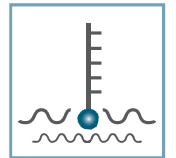
D [mm]
50



d [mm]
-



C [daN]
-



T [°C]
0° - 80°

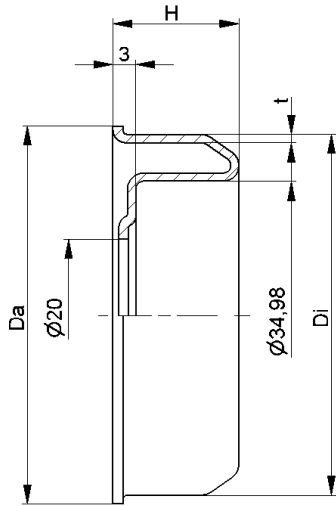


-

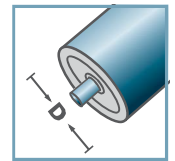


Carton [pcs.]

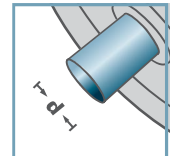
Taper Sleeves



MRK-40



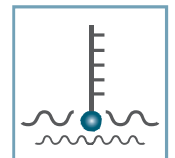
D [mm]
50 - 60



d [mm]
15



C [daN]
-



T [°C]
-



6202:
D35; d15; H11



Carton [pcs.]

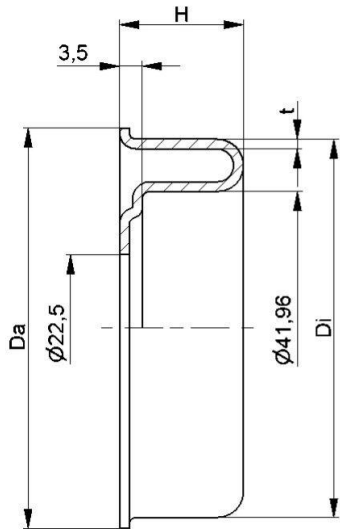
MRK-40				
Type	Di ±0,1	Da	H	t
MRK-50x1,5.40	47,3	49,5	16	1,2
MRK-50x2,0.40	46,3	49,5	16	1,2
MRK-60x2,0.40	56,3	59,5	16,5	1,5
MRK-60x3,0.40	54,3	59,5	16,5	1,5

Other dimensions on request!

☛ Housing: Steel, Zinc plated



Steel Housing



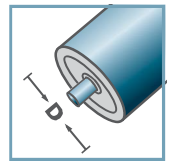
MRK-6004				
Type	Di ±0,1	Da	H	t
MRK-63,5x2,9/6004	58,1	61,5	19,0	1,5

Other dimensions on request!

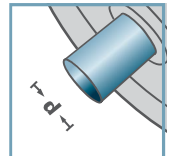
☛ Housing: Steel, Zinc plated



MRK-6004



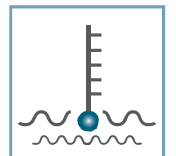
D [mm]
63,5



d [mm]
20



C [daN]
-



T [°C]
-

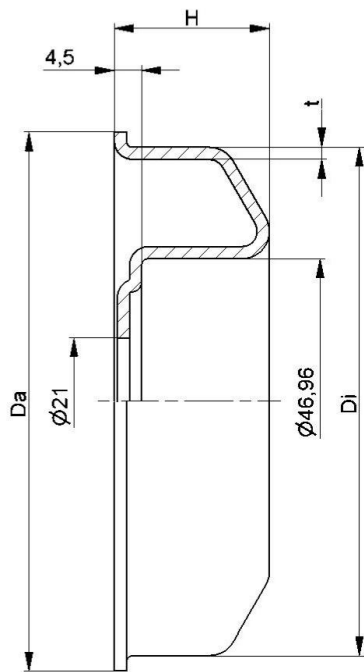


6004:
D42; d20; H12



Carton [pcs.]

Steel Housing



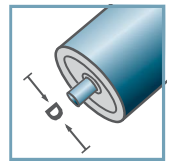
MRK-6204				
Type	Di ±0,1	Da	H	t
MRK-80x2,0/6204	76,5	79,5	23,5	2,0
MRK-80x3,0/6204	74,5	79,5	23,5	2,0
MRK-89x3,0/6204	83,5	88,5	23,5	2,0
MRK-89x3,25/6204	83,0	88,5	23,5	2,0
MRK-108x3,25/6204	102,0	107,5	25,0	2,0

Other dimensions on request!

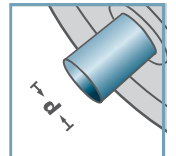
C Housing: Steel, Zinc plated



MRK-6204



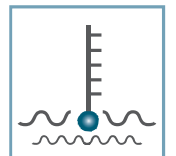
D [mm]
80 - 108



d [mm]
20



C [daN]
-



T [°C]
-

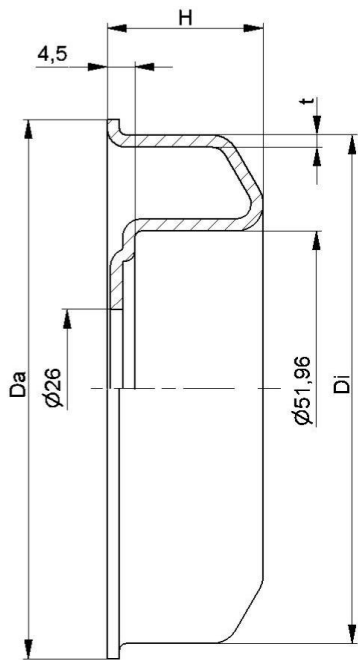


6204:
D47; d20; H14

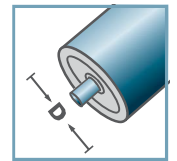


Carton [pcs.]

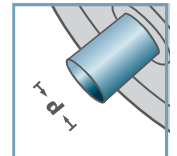
Steel Housing



MRK-6205



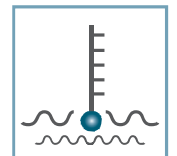
D [mm]
80 - 108



d [mm]
25



C [daN]
-



T [°C]
-



6205:
D52; d25; H15



Carton [pcs.]

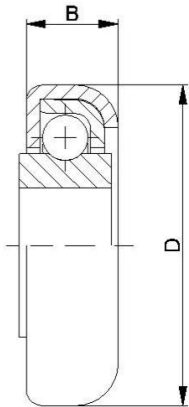
MRK-6205				
Type	Di ±0,1	Da	H	t
MRK-80x3,0/6205	74,5	79,5	23,5	2,0
MRK-89x3,0/6205	83,5	88,5	24,5	2,0
MRK-108x3,25/6205	102,0	107,5	25,5	2,0

Other dimensions on request!

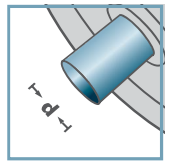
☛ Housing: Steel, Zinc plated



Steel Housing



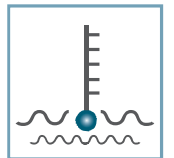
RL-0.280



d [mm]
10; 12; 12,8



C [daN]
7; 10



T [°C]
0° - 80°



RL-0.280		
Type	D	B
RL-0.280	28,0	7,6
Other dimensions on request!		

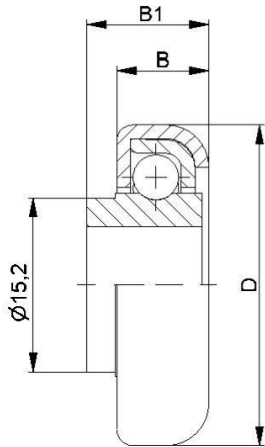
- ☛ Capsule: Steel, Zinc Plated
- ☛ Bearing Shell: Steel
- ☛ Ball: Steel
- ☛ Inner Race
 - ☛ Steel: C=10daN
 - ☛ Plastic: C=7daN; 0° - 80°



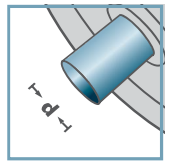
Carton [pcs.]

500

Radial Ball Bearings



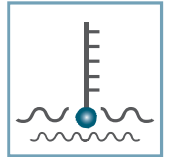
RL-0.280



10; 12



C [daN]
7; 10



T [°C]
0° - 80°



RL-0.280 with collar			
Type	D	B	B1
RL-0.280 m.B.	28,0	7,6	10,0

Other dimensions on request!

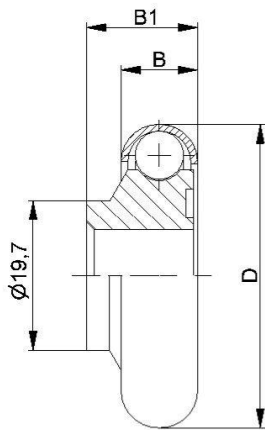
- ☛ Capsule: Steel, Zinc Plated
- ☛ Bearing Shell: Steel
- ☛ Ball, Steel
- ☛ Inner Race
 - ☛ Steel: C=10daN
 - ☛ Plastic: C=7daN; 0° - 80°



Carton [pcs.]

500

Radial Ball Bearings



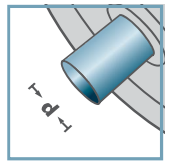
RL-0.400			
Type	D	B	B1
RL-0.400	40,0	10,0	14,5

Other dimensions on request!

- ☛ Capsule: Steel, Zinc Plated
- ☛ Ball: Steel
- ☛ Inner Race: Plastic



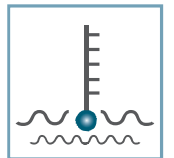
RL-0.400



d [mm]
12



C [daN]
7



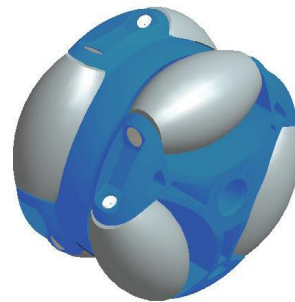
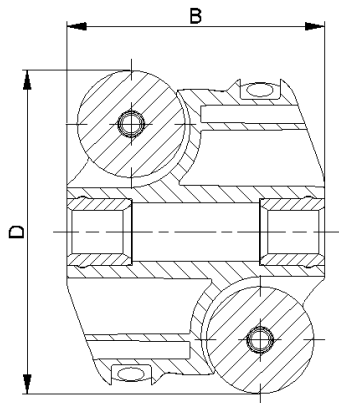
T [°C]
0° - 80°



Carton [pcs.]

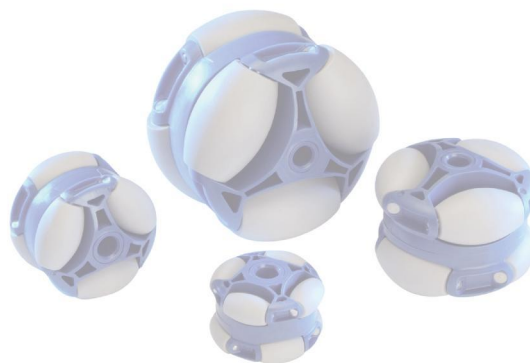
250

Radial Ball Bearings

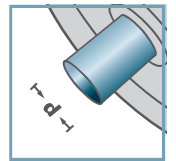


ASR-			
Type	D	B	Load Rating C [daN]
ASR-80	80	64	40
Other dimensions on request!			

- ☛ Housing: Plastic
- ☛ Barrel-shaped Roller: Plastic
- ☛ Axis: 1.4301



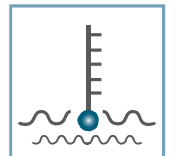
ASR-



d [mm]
8; 12; 15; SW14



C [daN]
40



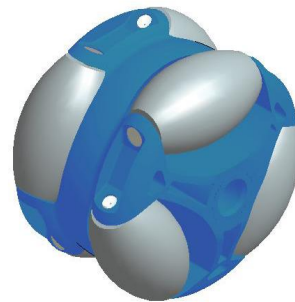
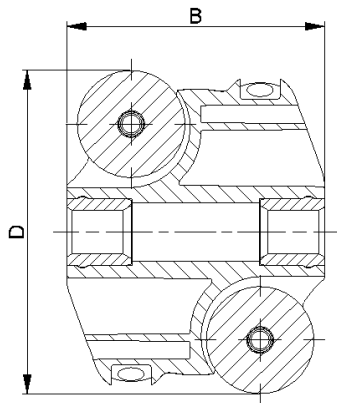
T [°C]
0° - 80°



Carton [pcs.]

50

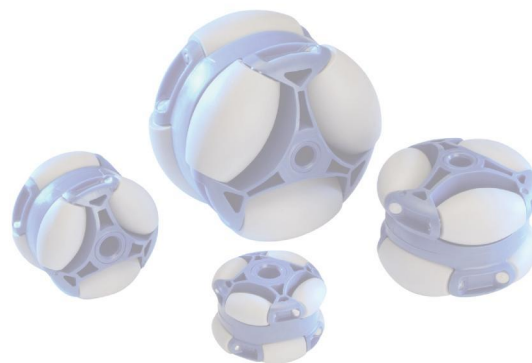
Polydirectional Wheel



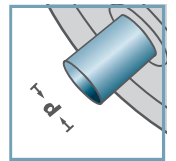
ASR-			
Type	D	B	Load Rating C [daN]
ASR-60	60	48	20
ASR-48	48	39	15
ASR-40	40	29	10

Other dimensions on request!

- ☛ Housing: Plastic
- ☛ Barrel-shaped Roller: Plastic
- ☛ Axis: 1.4301



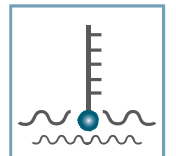
ASR-



d [mm]
8; 10; SW9



C [daN]
10 - 20



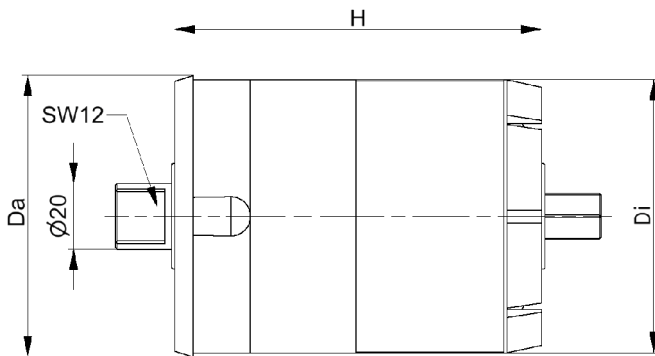
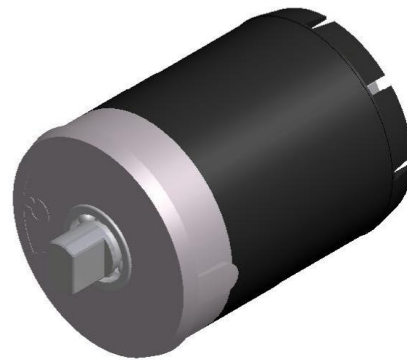
T [°C]
0° - 80°



Carton [pcs.]

50

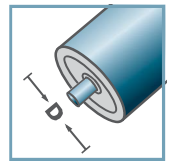
Polydirectional Wheel



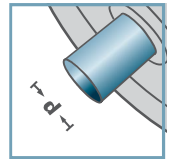
BR-89x3,0-				
Type	Da	Di	H	Load Rating [kg]
200	88,5	83	115	200
500	88,5	83	115	500
800	88,5	83	115	800
1200	88,5	83	115	1200



BR-



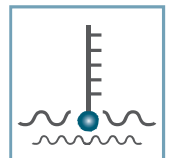
D [mm]
89



d [mm]
20



C [daN]
250



T [°C]
0° - 80°



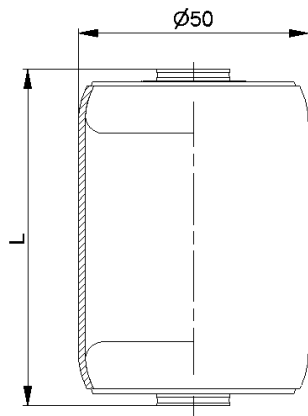
EP2



Carton [pcs.]

20

Brake Roller Unit



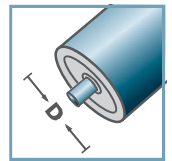
AMR-50x1,5.20		
Type	L	Load Rating C [daN]
AMR-50x1,5.20-66	66	160
AMR-50x1,5.20-73	73	160
AMR-50x1,5.20-80	80	160
AMR-50x1,5.20-100	100	160

Other dimensions on request!

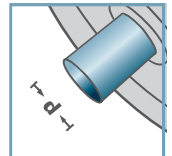
- ☛ Tube: Steel, Zinc plated
- ☛ Metal Roller Bearing MTR-20



AMR-50.20



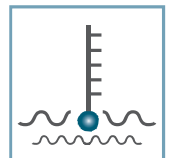
D [mm]
50



d [mm]
8; 10; 12; SW11



C [daN]
160



T [°C]
0° - 100°

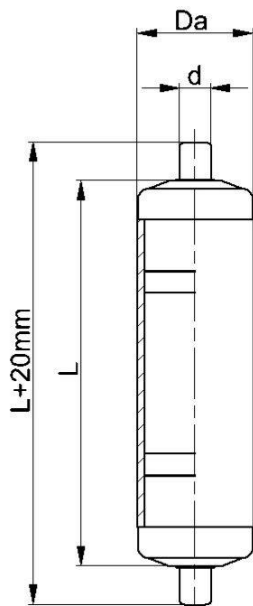


Oil

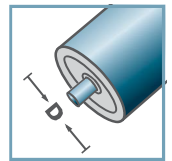


Carton [pcs.]

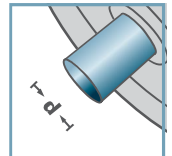
Metal Roller



AKR-00/01



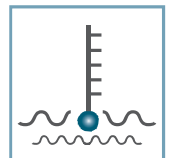
D [mm]
20; 30; 40



d [mm]
6; 8



C [daN]
10; 15



T [°C]
0° - 80°



AKR-00/01				
Type	D	d	L max.	Load Rating C [daN]
AKR-20x1,5.00.L	20	6	300	10
AKR-30x1,8.00.L	30	8	400	15
AKR-40x2,3.00.L	40	8	400	15
Other dimensions on request!				

- Tube: Plastic
- Plastic Roller Bearing KTR-00/01 with spring axis



Carton [pcs.]

Plastic Rollers with Spring Axis

Dear Customer.

Are you unable to find what you need in our extensive range of products? Or do you need a special version for a specific application?

To enable the preparation of an offer that is tailored to your needs you are kindly requested to answer the following questions:

By Fax: +49 (0)2353 66985-98

By Mail: info@markes.de

Kindly enclose a drawing or sketch with your request for quotation – if available.

Ball bearing assemblies:

Product in chapter / on page: _____

Deviating dimensions, version: _____

Carrying capacity: _____

Number of revolutions: _____

Further requirements: _____

Alternative materials are permissible? YES NO

Variants are planned? YES NO

Particulars:

Planned annual volume? _____

Call-off quantities? _____

Non-recurrent requirement Permanent requirement

Type of packaging? _____

Packing unit? _____

Customer specific test specifications have to be respected?

YES NO

If YES, please specify? _____

Plastic part:

Specified material? _____

Antistatic treatment is required? YES NO

Treatment for contact with foodstuffs is required?

YES NO

Specified colour? _____

Specified surface? _____

Appearance standards? _____

Further requirements (customer logo, etc.)? _____

Alternative materials are permissible? YES NO

Variants are planned? YES NO

Metal part:

Specified material? _____

Surfaces? _____

Hardening and/or tempering? _____

Raw edge/direction of punching? _____

Absence of burr is required? YES NO

Appearance standards? _____

Further requirements (customer logo, etc.)? _____

Alternative materials are permissible? YES NO

Variants are planned? YES NO

Person to contact to clarify technical issues:

Firm: _____

Name: _____

Department: _____

Specified date of delivery: _____

Phone: _____

Fax: _____

Email: _____